

5581

5580

TO THE ENGINEER, LICENSED UNDER THE PROFESSIONAL ENGINEERING ACT, CHAPTER 900, CIVIL ENGINEERING DIVISION, STATE OF CALIFORNIA, LICENSE NO. 12345, THE FOLLOWING INFORMATION IS HEREBY SUBMITTED FOR YOUR REVIEW AND APPROVAL:

NEW WORK
REPLACEMENT

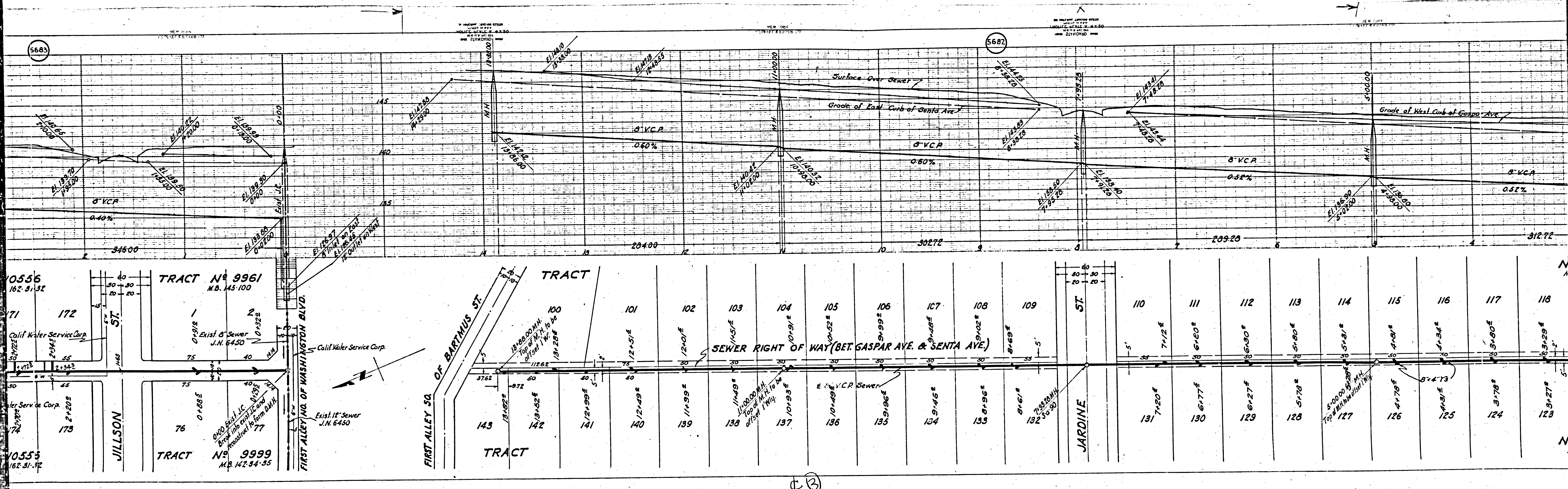
TO THE ENGINEER, LICENSED UNDER THE PROFESSIONAL ENGINEERING ACT, CHAPTER 900, CIVIL ENGINEERING DIVISION, STATE OF CALIFORNIA, LICENSE NO. 12345, THE FOLLOWING INFORMATION IS HEREBY SUBMITTED FOR YOUR REVIEW AND APPROVAL:

NEW WORK
REPLACEMENT

TO THE ENGINEER, LICENSED UNDER THE PROFESSIONAL ENGINEERING ACT, CHAPTER 900, CIVIL ENGINEERING DIVISION, STATE OF CALIFORNIA, LICENSE NO. 12345, THE FOLLOWING INFORMATION IS HEREBY SUBMITTED FOR YOUR REVIEW AND APPROVAL:

MK

MK

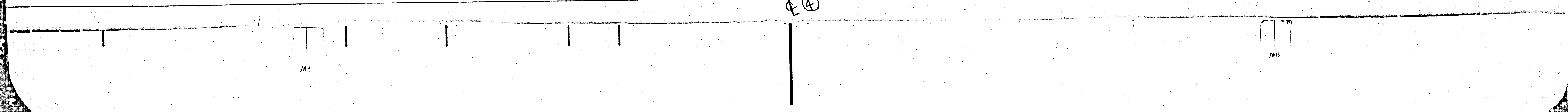
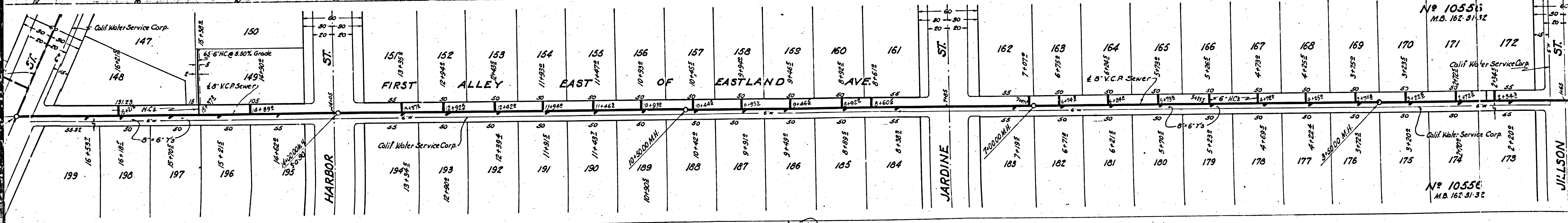
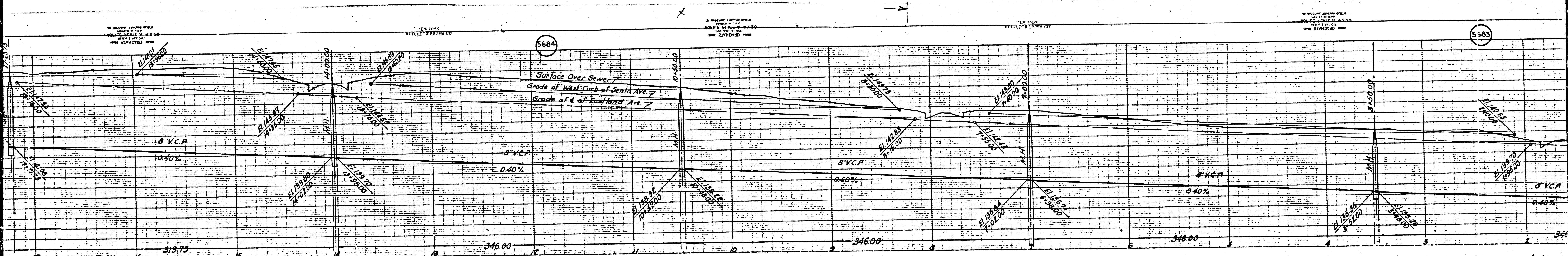


5683

5687

5

M5

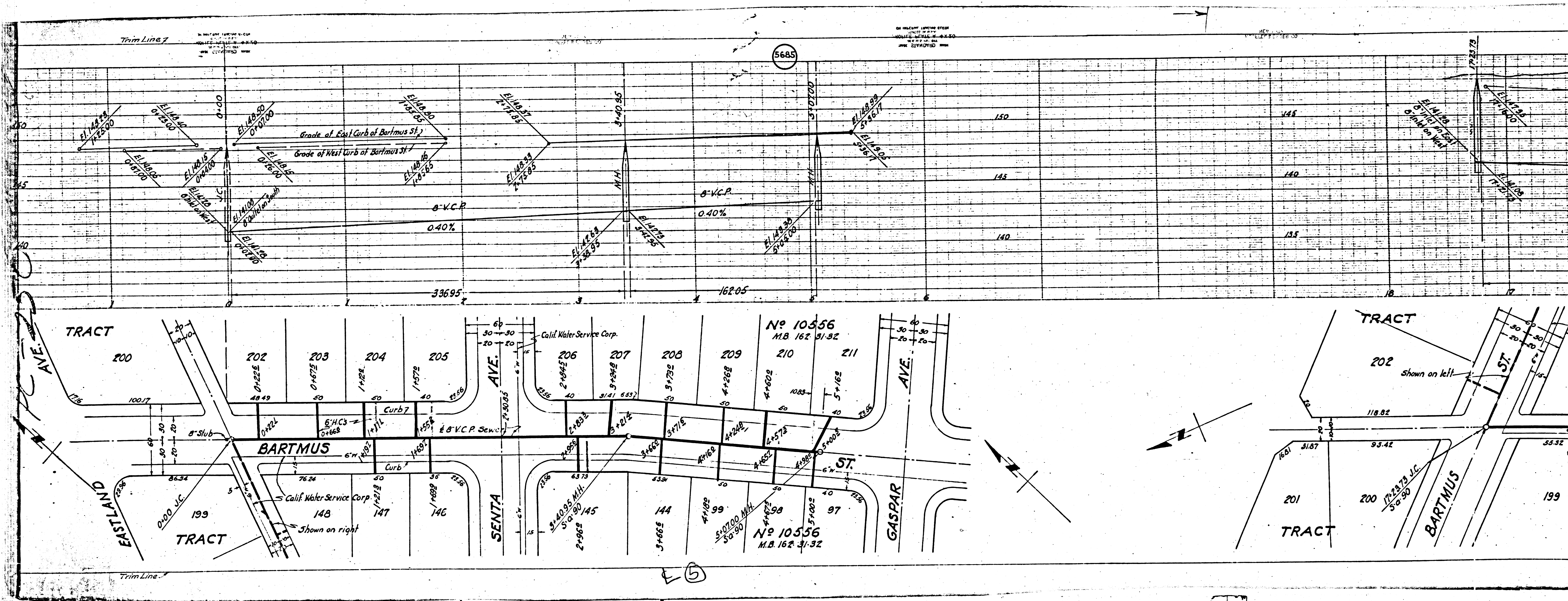


NEW YORK
 5684
 5683

No 1055
 M.B. 162-31-32

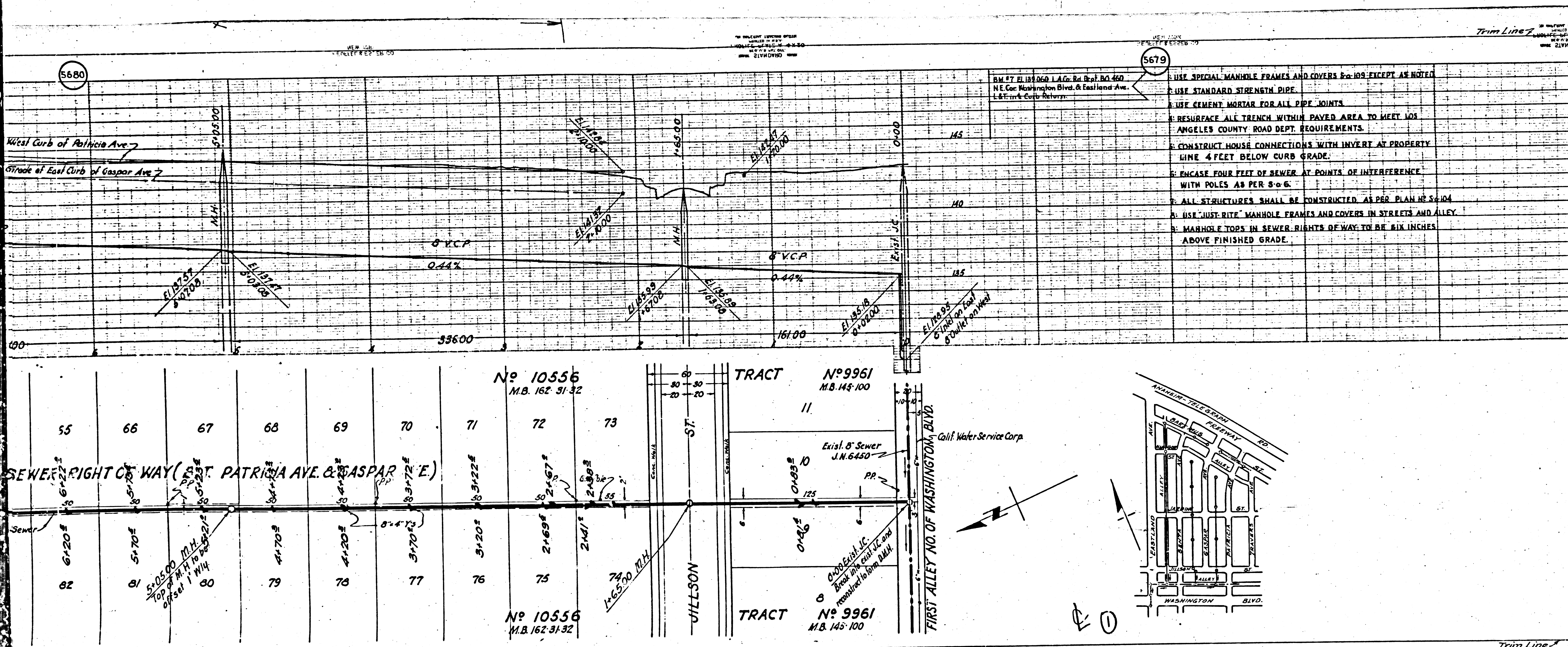
No 1055
 M.B. 162-31-32

Harbor St
 Jardine St
 Jillson St



M5

M6



- 1. USE SPECIAL MANHOLE FRAMES AND COVERS 5'-0" EXCEPT AS NOTED.
- 2. USE STANDARD STRENGTH PIPE.
- 3. USE CEMENT MORTAR FOR ALL PIPE JOINTS.
- 4. RESURFACE ALL TRENCH WITHIN PAVED AREA TO MEET LOS ANGELES COUNTY ROAD DEPT. REQUIREMENTS.
- 5. CONSTRUCT HOUSE CONNECTIONS WITH INVERT AT PROPERTY LINE 4 FEET BELOW CURB GRADE.
- 6. ENCASE FOUR FEET OF SEWER AT POINTS OF INTERFERENCE WITH POLES AS PER S-0-6.
- 7. ALL STRUCTURES SHALL BE CONSTRUCTED AS PER PLAN N.S. 104.
- 8. USE "JUST RITE" MANHOLE FRAMES AND COVERS IN STREETS AND ALLEY.
- 9. MANHOLE TOPS IN SEWER RIGHTS OF WAY TO BE SIX INCHES ABOVE FINISHED GRADE.

PROFILE, ALIGNMENT AND GRADE OF
SANITARY SEWERS
 TO BE CONSTRUCTED IN
SANITARY SEWER RIGHTS OF WAY
 IN TRACT NO. 10556 M.B. 162 31-32
 AND
 IN TRACT NO. 9961 M.B. 145 100
 BETWEEN FIRST ALLEY NORTH OF WASHINGTON BLVD. AND FIRST ALLEY SOUTH OF BARTMUS ST.
FIRST ALLEY EAST OF EASTLAND AVE
 BETWEEN FIRST ALLEY NORTH OF WASHINGTON BLVD. AND BARTMUS ST.
BARTMUS STREET
 BETWEEN EASTLAND AVE. AND GASPAR AVE.
PRIVATE CONTRACT NO. 250
W.S. 96
SHEET 1 OF 1 SHEET
 JAN 1944

SCALE VERT. 1" = 4'
 HORIZ. 1" = 40'

FIELD WORK BY: *Frederick C. Stilson*
 DESIGNED BY: *George A. Blackmer*
 GEORGE A. BLACKMER, REG. CE 1212

FOR LEGEND
 SEE PLAN NO. 9-0-64

NOTE:
 GRADES TO WHICH THIS IMPROVEMENT IS TO BE CONSTRUCTED ARE SHOWN ON PLAN AND PROFILE. GRADE POINTS FOR TOP OF CURB, CENTER LINE OF STREET OR CENTER LINE OF ALLEY ARE SHOWN BY CIRCLES ON PROFILES. AT ALL POINTS BETWEEN DESIGNATED POINTS THE GRADE SHALL BE ESTABLISHED SO AS TO CONFORM TO A STRAIGHT LINE DRAWN BETWEEN SAID DESIGNATED POINTS. ELEVATIONS ARE IN FEET ABOVE MEAN SEA LEVEL.

THIS DRAWING AND THE DATA HEREON ARE HEREBY MADE A PART OF THE SPECIFICATIONS. WORK SHALL BE CONSTRUCTED ACCORDING TO SPECIFICATIONS ON FILE IN THE OFFICE OF THE COUNTY ENGINEER AND SHALL BE PROSECUTED ONLY IN THE PRESENCE OF THE COUNTY ENGINEER. BEFORE WORK CAN BE STARTED, THE CONTRACTOR MUST OBTAIN A PERMIT TO EXCAVATE IN COUNTY STREETS FROM THE L.A. COUNTY ROAD DEPT. 104 HALL OF RECORDS, AND MAKE A DEPOSIT WITH THE COUNTY ENGINEER, 700 UNION LEAGUE BUILDING, SUFFICIENT TO COVER THE COST OF CONSTRUCTION INSPECTION AND RECORD PLANS.

COUNTY OF LOS ANGELES, CALIFORNIA

APPROVED: *Alfred Jones*
 COUNTY ENGINEER

APPROVED: *George A. Blackmer*
 CHIEF ENGINEER OF COUNTY SANITATION DISTRICT NO. 8

CHECKED BY: *M. C. ...* 2-11-1944
 OFFICE OF COUNTY ENGINEER BLDG. NO. 301 8



D.C. 520