

5818
 B.M. EL. 84.16 L.A. CO. FC. DIST. FC. 45-6
 90 FT. N. EL. SEGUNDO BLVD. TOP E. WALL OF CHANNEL
 BRASS DISC. IN SULPHUR. DUE E. OF OIL DERRICK.

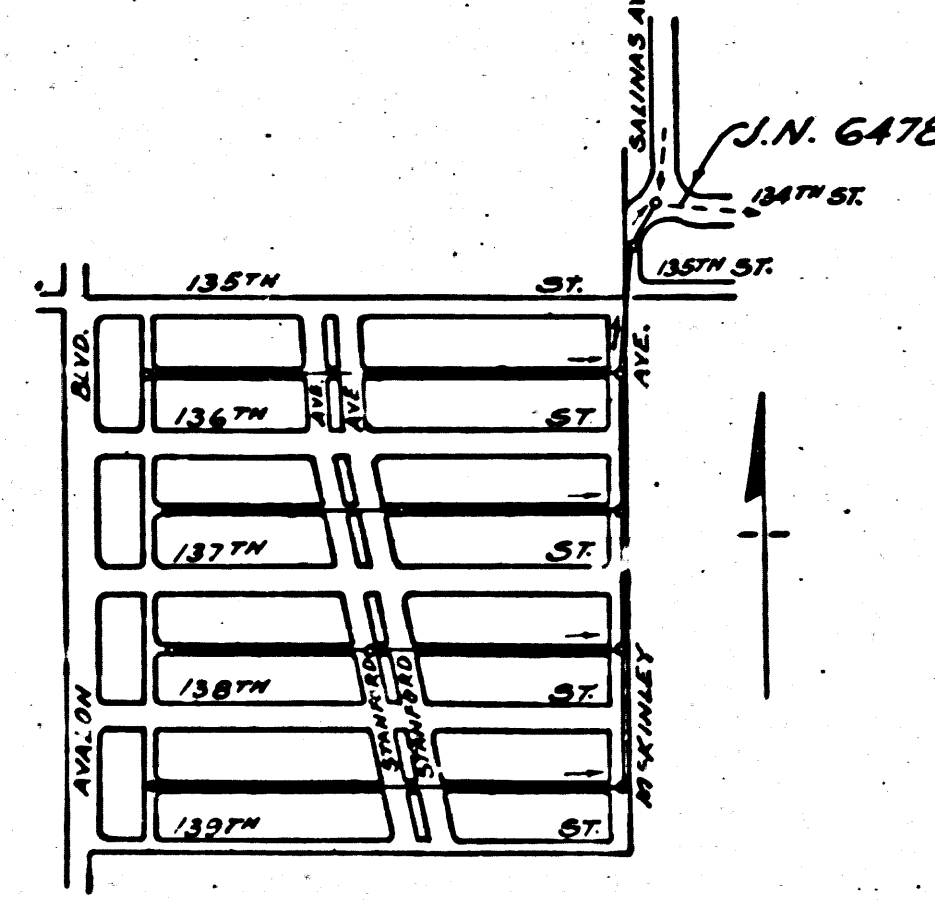
- 1 USE "JUST-RITE" MANHOLE FRAMES AND COVERS
- 2 USE STANDARD STRENGTH PIPE.
- 3 USE CEMENT MORTAR FOR ALL V.C.P. JOINTS
- 4 RESURFACE ALL TRENCH WITHIN PAVED AREA TO MEET L.O.S. ANGELES COUNTY ROAD DEPT. REQUIREMENTS
- 5 ENCASE FOUR FEET OF SEWER AT POINTS OF INTERFERENCE WITH POLES AS PER PLAN NO. S-3-6.
- 6 ALL STRUCTURES SHALL BE CONSTRUCTED AS PER PLAN NO. S-3-104.

PROFILE, ALIGNMENT AND GRADE OF
SANITARY SEWERS
 TO BE CONSTRUCTED IN
 FIRST ALLEY SO. OF 135TH ST.
 FIRST ALLEY SO. OF 136TH ST.
 FIRST ALLEY SO. OF 137TH ST.
 FIRST ALLEY SO. OF 138TH ST.
 BETWEEN MCKINLEY AVE. AND FIRST ALLEY E. OF AVALON BLVD.
 MCKINLEY AVE.
 BETWEEN 184TH ST. AND 189TH ST.
 PRIVATE CONTRACT NO. 255
 W.S. 26
 SHEET 1 OF 1 SHEET

VERT. 1" = 4'
 SCALE, HORIZ. 1" = 40'
 MARCH 1944

FIELD WORK BY *Frederick C. Stilson* FREDEKCK C. STILSON REG. C.E. N° 1670
 DESIGNED BY *George C. Blackmer* GEORGE C. BLACKMER REG. C.E. N° 1211

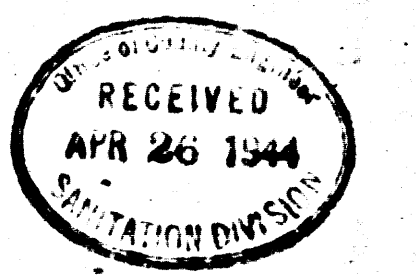
195	194	193	192	191	190	189	188	187	186	185	184
4196.00	4154.70	4113.30	3125.00	3131.00	2194.00	2153.50	1174.00	1134.50	0194.00	0153.00	0112.00
OF		135 TH ST.			ST.						
172	173	174	175	176	177	178	179	180	181	182	183
4184.40	4143.10	4101.50	3103.50	3125.00	2182.50	2144.50	1497.00	1164.00	118.00	0182.00	0159.50
			3100.00	3125.00	2182.50	2144.50	1497.00	1164.00	118.00	0182.00	0159.50

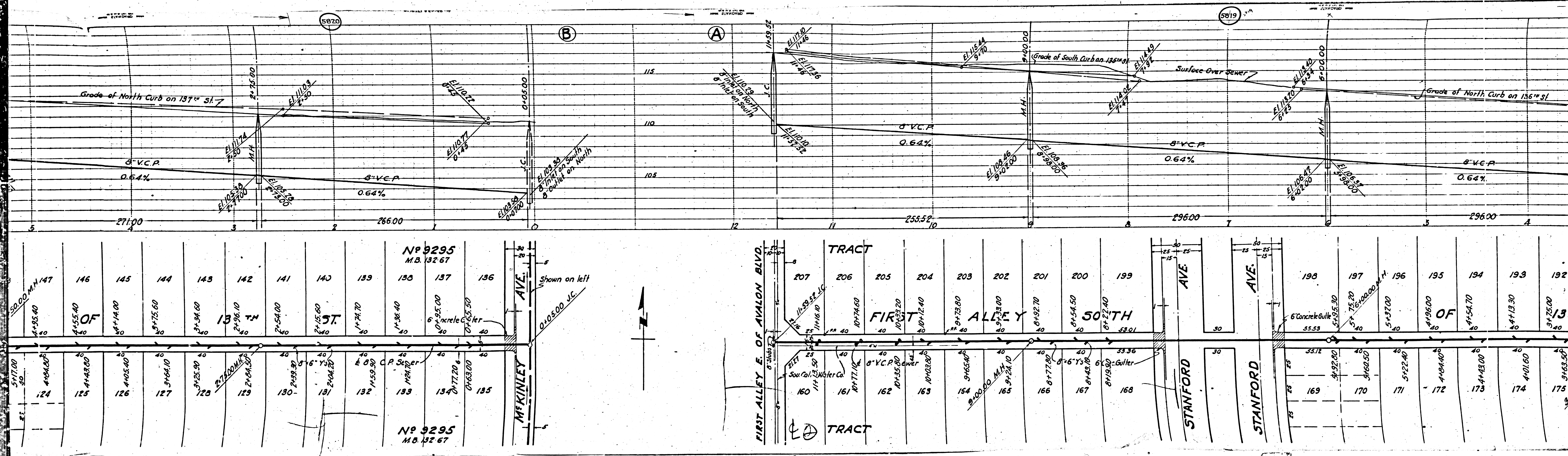


FOR LEGEND -
 SEE PLAN NO. S-3-64

NOTE:
 GRADES TO WHICH THIS IMPROVEMENT IS TO BE CONSTRUCTED ARE SHOWN ON PLAN AND PROFILE. GRADE POINTS FOR TOP OF CURB, CENTER LINE OF STREET OR CENTER LINE OF ALLEY ARE SHOWN BY CIRCLES ON PROFILE. AT ALL POINTS BETWEEN DESIGNATED POINTS THE GRADE SHALL BE ESTABLISHED SO AS TO CONFORM TO A STRAIGHT LINE DRAWN BETWEEN SAID DESIGNATED POINTS. ELEVATIONS ARE IN FEET ABOVE U.S.S. DATUM OR MEAN SEA LEVEL.
 THIS DRAWING AND THE DATA HEREON ARE HEREBY MADE A PART OF THE SPECIFICATIONS. WORK SHALL BE CONSTRUCTED ACCORDING TO SPECIFICATIONS ON FILE IN THE OFFICE OF THE COUNTY ENGINEER AND SHALL BE PROSECUTED ONLY IN THE PRESENCE OF THE COUNTY ENGINEER. BEFORE WORK CAN BE STARTED, THE CONTRACTOR MUST OBTAIN A PERMIT TO EXCAVATE IN COUNTY STREETS FROM THE L.A. COUNTY ROAD DEPT. FOR HALL OF RECORDS, AND MAKE A DEPOSIT WITH THE COUNTY ENGINEER, 700 UNION LEAGUE BUILDING, SUFFICIENT TO COVER THE COST OF CONSTRUCTION INSPECTION AND RECORD PLANS.

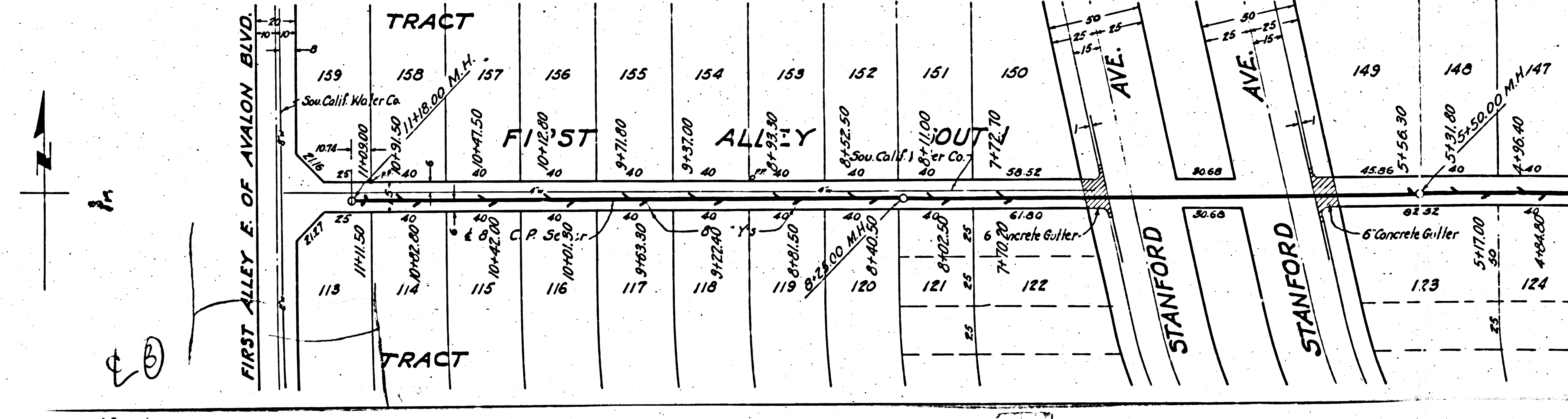
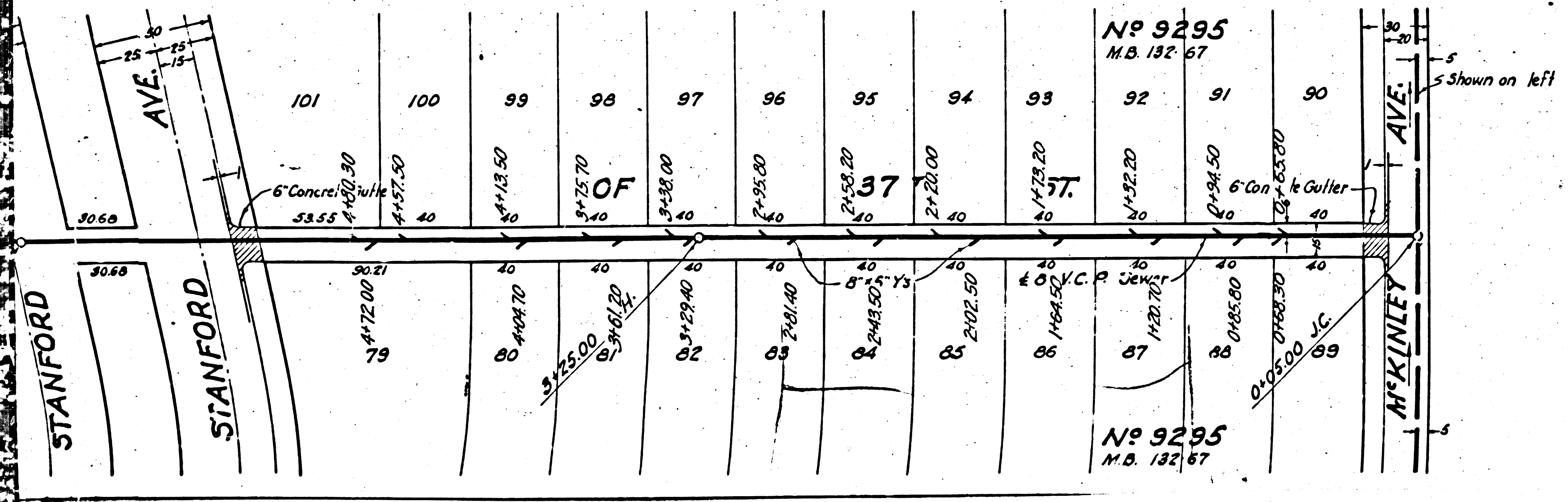
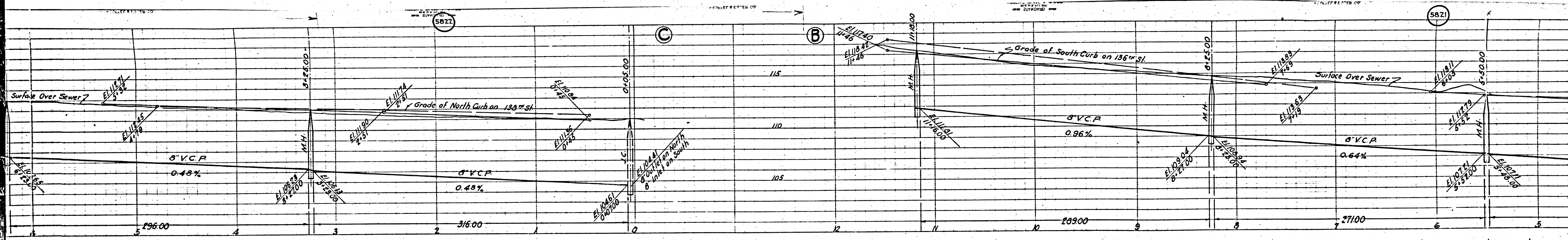
COUNTY OF LOS ANGELES, CALIFORNIA.
 APPROVED *Alfred Jones* COUNTY ENGINEER
 APPROVED _____ CHIEF ENGINEER OF COUNTY SANITATION DIST. NO. 1
 CHECKED BY *W. J. ...* 3-10-1944
 OFFICE OF COUNTY ENGINEER REG. C.E. N° 5025

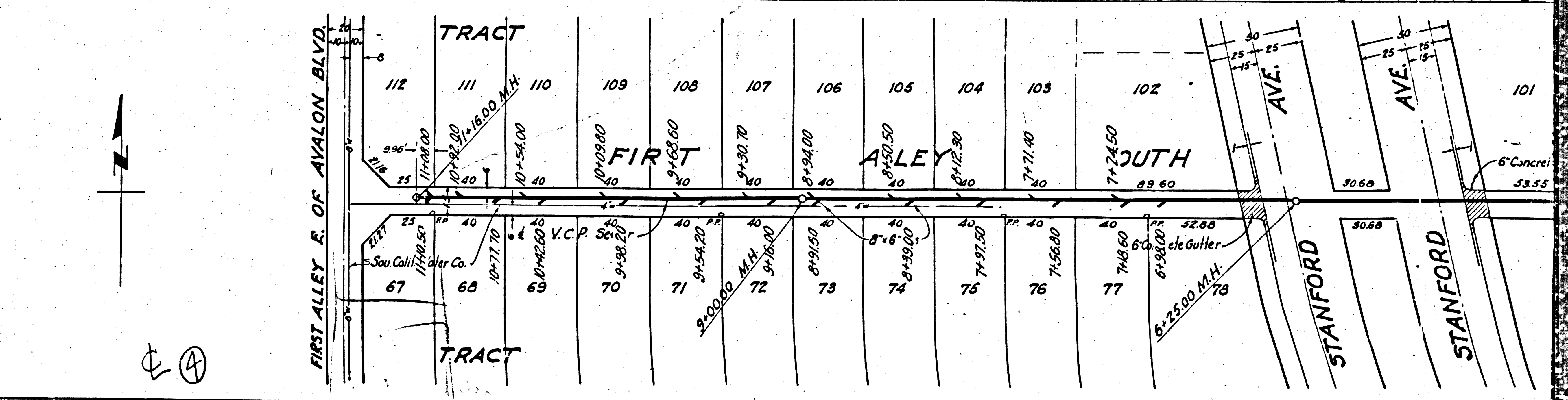
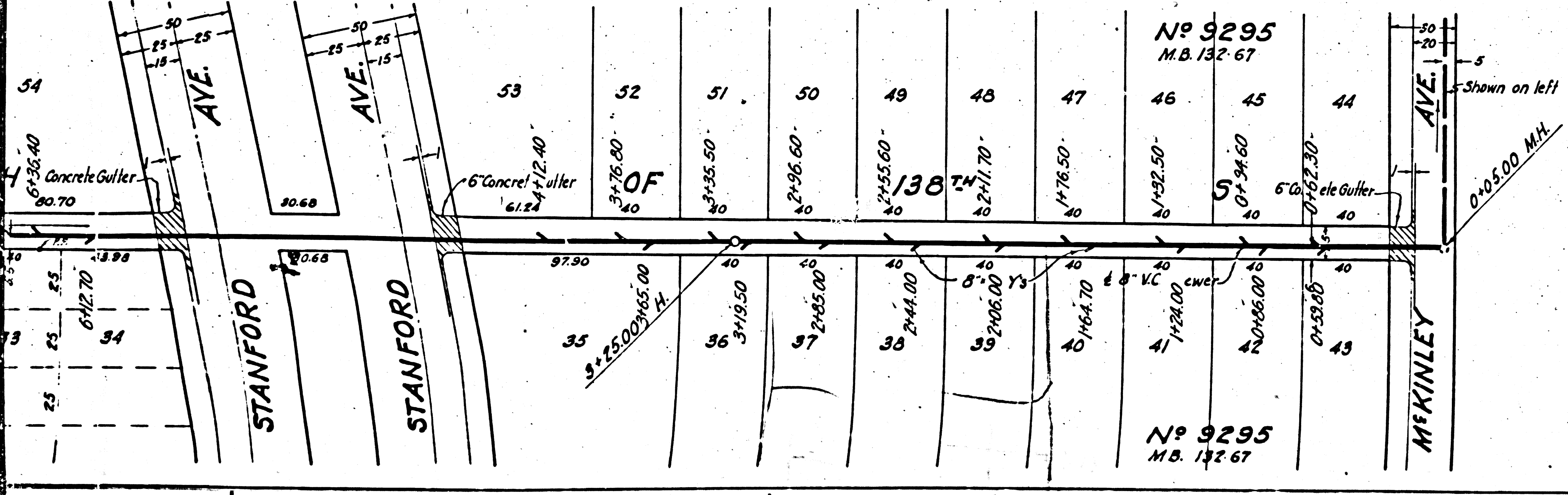
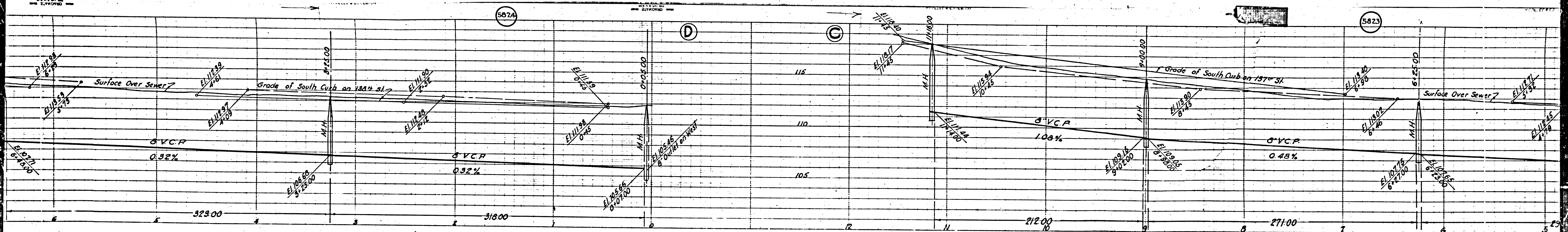


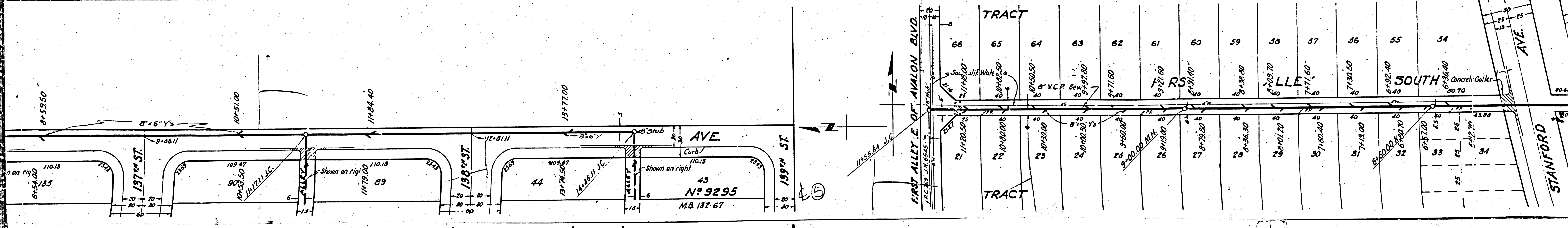
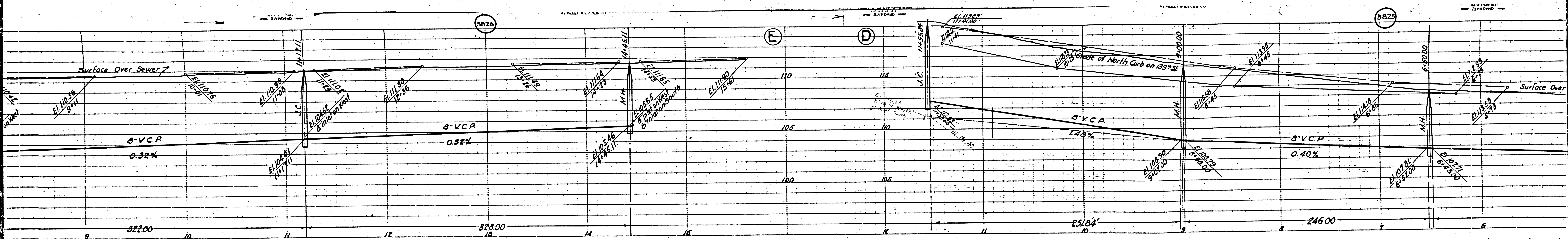


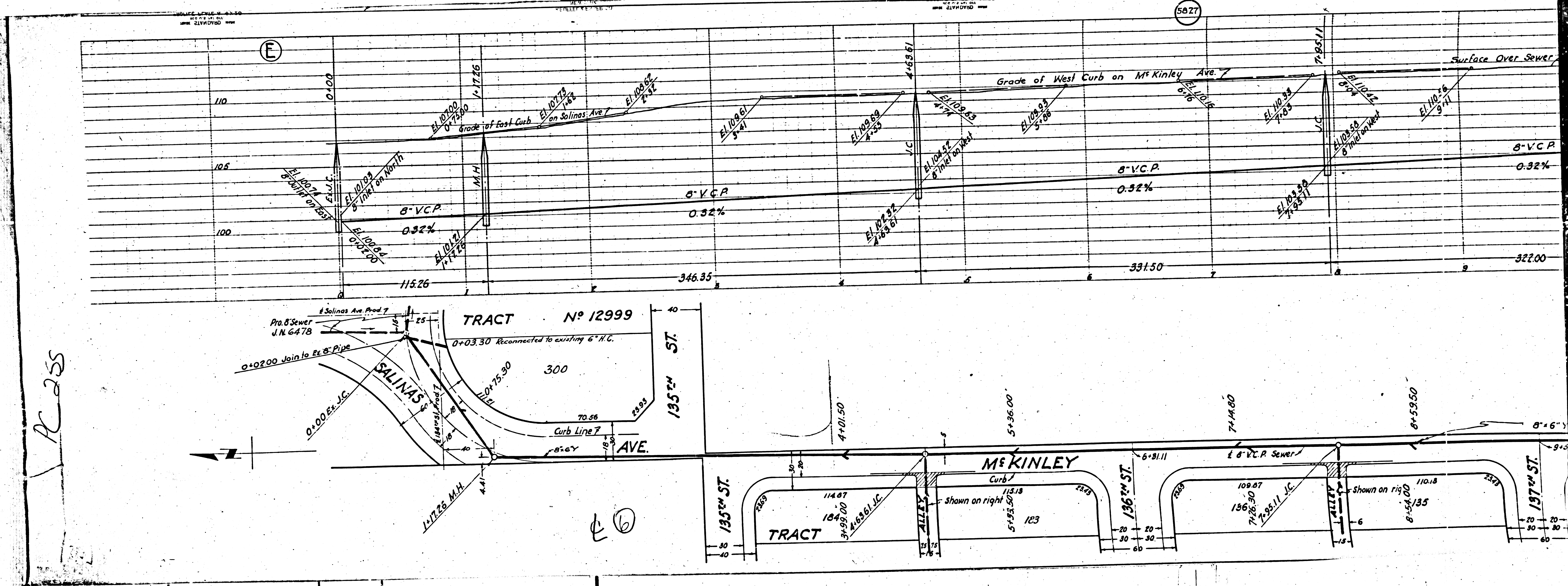
147	146	145	144	143	142	141	140	139	138	137	136
50.00 M.H. 147	4+55.40	4+14.00	3+75.00	3+34.00	2+96.10	2+54.00	2+15.60	1+74.70	1+36.40	0+95.00	0+55.50
4+0	4+0	4+0	4+0	4+0	4+0	4+0	4+0	4+0	4+0	4+0	4+0
5771.00	4+06.00	4+14.00	4+05.40	3+64.10	3+25.30	2+84.50	2+45.90	2+07.20	1+68.60	1+30.00	0+91.50
57	124	125	126	127	128	129	130	131	132	133	134
50.00 M.H. 147	4+55.40	4+14.00	3+75.00	3+34.00	2+96.10	2+54.00	2+15.60	1+74.70	1+36.40	0+95.00	0+55.50
4+0	4+0	4+0	4+0	4+0	4+0	4+0	4+0	4+0	4+0	4+0	4+0
5771.00	4+06.00	4+14.00	4+05.40	3+64.10	3+25.30	2+84.50	2+45.90	2+07.20	1+68.60	1+30.00	0+91.50
57	124	125	126	127	128	129	130	131	132	133	134

207	206	205	204	203	202	201	200	199	198	197	196	195	194	193	192
10+74.00	10+33.20	10+12.40	9+73.80	9+33.00	8+92.70	8+54.50	8+17.40	7+80.1	7+42.00	7+03.30	6+64.50	6+26.00	5+87.50	5+49.00	5+10.50
40	40	40	40	40	40	40	40	40	40	40	40	40	40	40	40
10+74.00	10+33.20	10+12.40	9+73.80	9+33.00	8+92.70	8+54.50	8+17.40	7+80.1	7+42.00	7+03.30	6+64.50	6+26.00	5+87.50	5+49.00	5+10.50
160	161	162	163	164	165	166	167	168	169	170	171	172	173	174	175
10+77.10	10+35.80	10+14.50	9+73.20	9+32.50	8+91.40	8+50.10	8+08.80	7+67.50	7+26.20	6+84.90	6+43.60	6+02.30	5+61.00	5+19.70	4+78.40
40	40	40	40	40	40	40	40	40	40	40	40	40	40	40	40
10+77.10	10+35.80	10+14.50	9+73.20	9+32.50	8+91.40	8+50.10	8+08.80	7+67.50	7+26.20	6+84.90	6+43.60	6+02.30	5+61.00	5+19.70	4+78.40









R 255

6