

BM A-23 Elev. 79.59 Cross
S.W. Cor. Lot 62, TRACT N° 1084
N.E. Cor. 120TH ST. & INGLEWOOD AVE.

NOTE: Add 0.71 Feet to adjust to Los Angeles County Datum.

QUANTITIES

385 Lin. Ft. 8" Extra Strength Vitrified Clay Pipe Sewer including 18" x 6" Ys

11296 Lin. Ft. 8" Standard Strength Vitrified Clay Pipe Sewer, including 370-8" x 6" Ys

10049 Lin. Ft. 6" Standard Strength Vitrified Clay Pipe House Connection Sewer, including 369-6" x 6" Bends

21730 Lin. Ft. Total Length of Sewer

34 Manholes - S-a-104

11 Junction Chambers - S-a-104

45 Manhole Frame & Cover Sets

NOTES:-

1. Use Just Rite or D. & D. Safety and Noiseless Manhole Frames and Covers.
2. Use Standard Strength Vitrified Clay Pipe, except as noted.
3. Construct House Connections as per Standard Specifications with Invert at Property Line to Elevation shown on the Plans.
4. Use Cement Mortar for all V.C.P. Joints.
5. Resurface all Trench within Paved Area to meet Los Angeles County Road Dept. or State Highway requirements.
6. Encase Four Feet of Sewer at Points of Interference with Poles as per Plan No. S-a-6.

PROFILE ALIGNMENT AND GRADE OF SANITARY SEWERS TO BE CONSTRUCTED IN FELTON AVENUE

BETWEEN 121ST ST. AND 120TH ST.

BETWEEN FELTON AVE. AND ANZA AVE.

FELTON AVENUE

BETWEEN STACY ST. AND 121ST ST.

PRIVATE CONTRACT N° 256

W.S. 25.

SHEET 1 OF 4 SHEETS.

SCALE: VERT. 1" = 4'

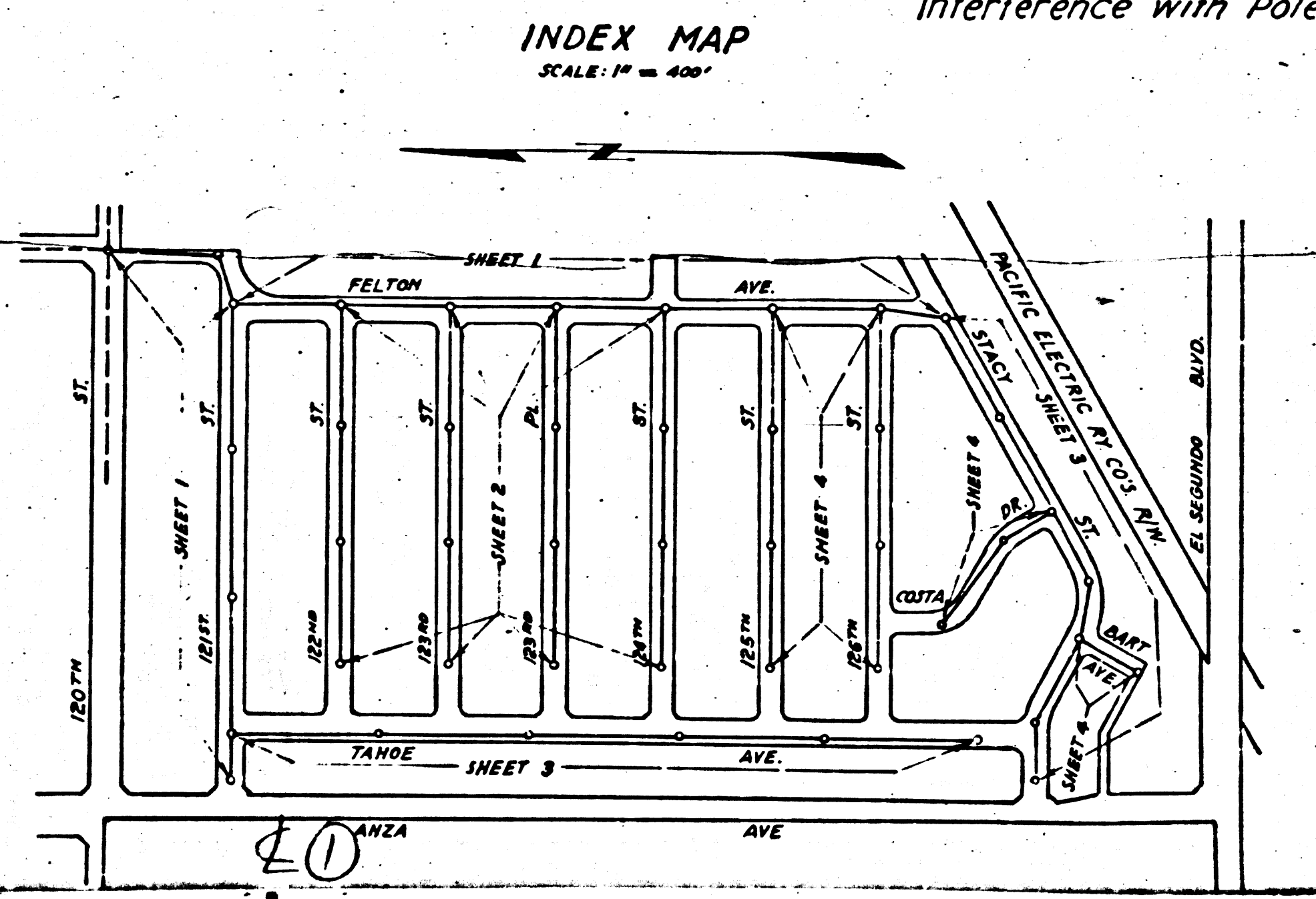
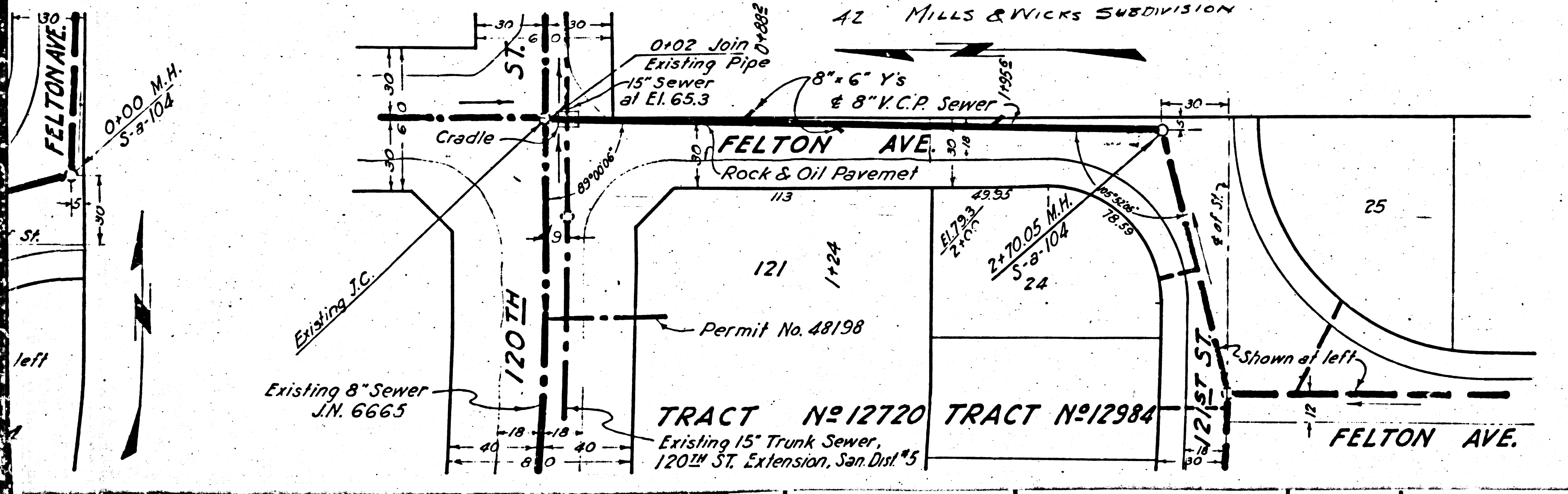
HORIZONTAL 1" = 40'

PREPARED IN THE OFFICE OF

HAROLD M. TEGART

BY: *Handwritten Signature*

REG. E.E. 112151



FOR LEGEND SEE PLAN N° S-a-64

NOTE: GRADES TO WHICH THIS IMPROVEMENT IS TO BE CONSTRUCTED ARE SHOWN ON PLANS AND PROFILE. GRADE POINTS FOR TOP OF CURB, TOP OF HEADS OR CENTER LINE OF STREET ARE SHOWN BY CIRCLES OR FRAMES. ALL POINTS BETWEEN DESIGNATED POINTS THE GRADE SHALL BE ESTABLISHED SO AS TO CONFORM TO A STRAIGHT LINE DRAWN BETWEEN SAID DESIGNATED POINTS.

ELEVATIONS ARE IN FEET ABOVE U.S.G. DATUM OR MEAN SEA LEVEL.

THIS DRAWING CONSISTING OF FOUR SHEETS, HAS BEEN MADE A PART OF THE SPECIFICATIONS. WORK SHALL BE CONSTRUCTED ACCORDING TO SPECIFICATIONS ON FILE IN THE OFFICE OF THE COUNTY ENGINEER, AND SHALL BE INSPECTED ONLY IN THE PRESENCE OF THE COUNTY ENGINEER.

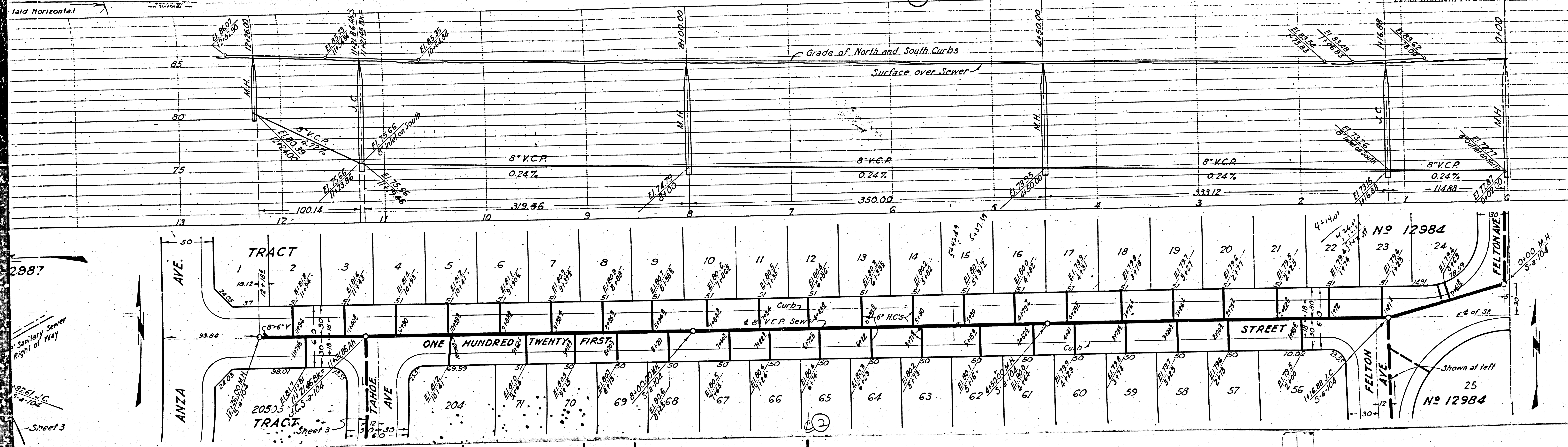
BEFORE WORK CAN BE STARTED THE CONTRACTOR MUST OBTAIN A PERMIT TO EXCAVATE IN COUNTY STREETS FROM THE L.A. COUNTY ROAD DEPT., FOR PAULS OR RECORDS AND MAKE A DEPOSIT WITH THE COUNTY ENGINEER, 100 UNION LEAGUE BLDG. SUFFICIENT TO COVER THE COST OF CONSTRUCTION AND RECORD PLANS. IF WORK IS TO BE DONE IN A STATE HIGHWAY, A PERMIT MUST BE OBTAINED FROM THE STATE OF CALIFORNIA, DIVISION OF HIGHWAYS, 800 STATE BLDG. AFTER MAKING THE DEPOSIT WITH COUNTY ENGINEER.

COUNTY OF LOS ANGELES, CALIFORNIA.

APPROVED: *Handwritten Signature*
COUNTY ENGINEER

APPROVED: *Handwritten Signature*
CHIEF ENGINEER OF COUNTY SANITATION DISTRICT N° 8

CHECKED: *Handwritten Signature*
OFFICE OF COUNTY ENGINEER, REGISTERED



2887

Sanitary Sewer
Right of Way

Sheet 3

TRACT

TRACT

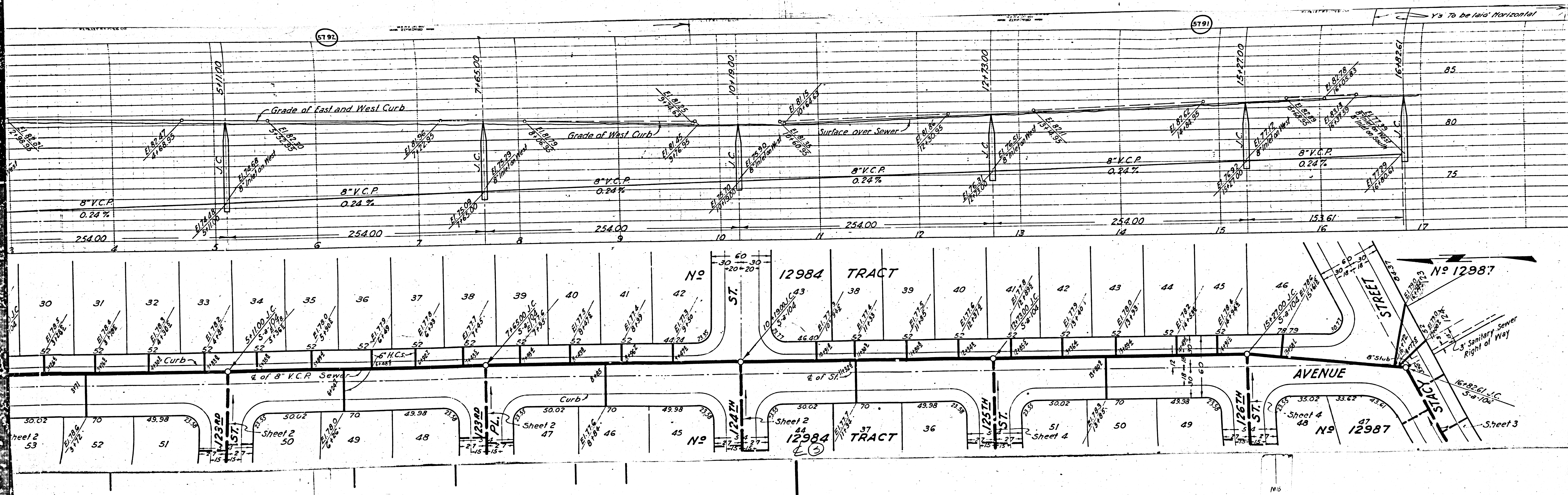
No 12984

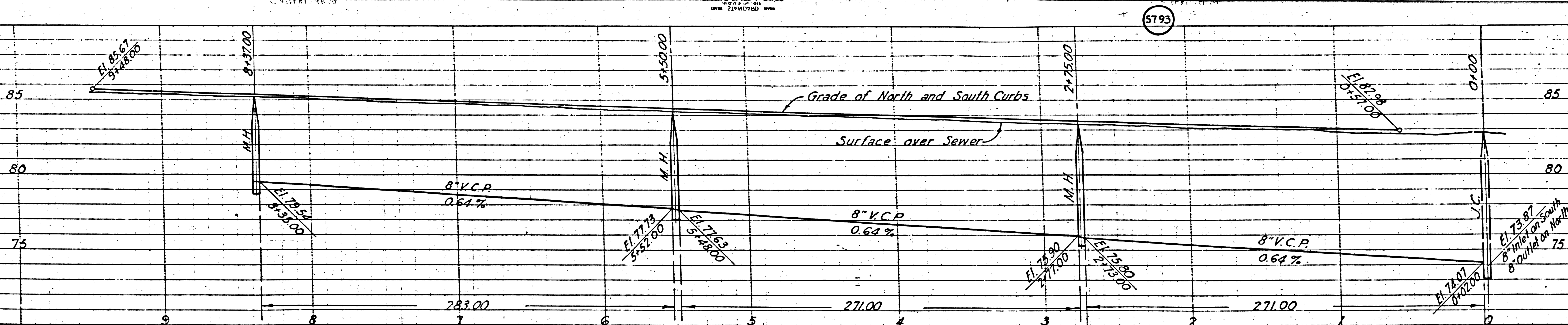
No 12984

(2)

M6

M6





(2)

**PROFILE, ALIGNMENT AND GRADE OF
SANITARY SEWERS
TO BE CONSTRUCTED IN**

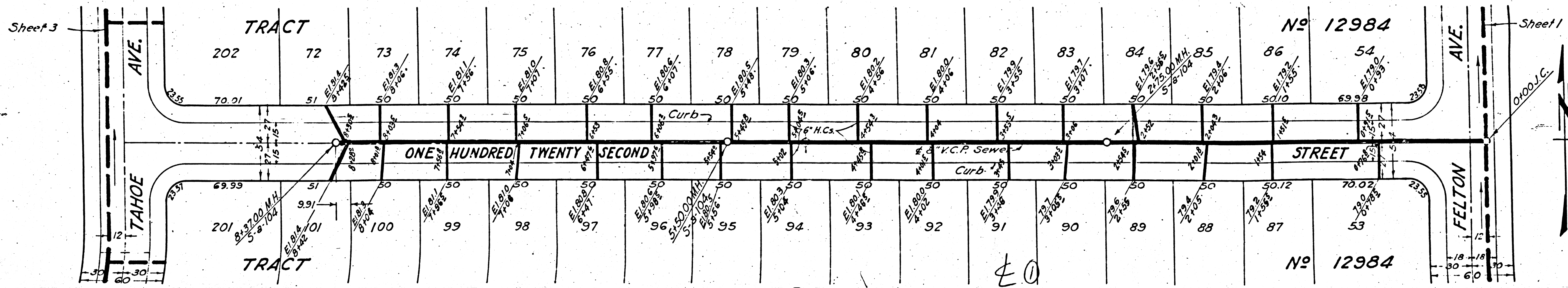
ONE HUNDRED TWENTY SECOND STREET
BETWEEN FELTON AVENUE AND TAHOE AVENUE.

ONE HUNDRED TWENTY THIRD STREET
BETWEEN FELTON AVENUE AND TAHOE AVENUE.

ONE HUNDRED TWENTY THIRD PLACE
BETWEEN FELTON AVENUE AND TAHOE AVENUE.

ONE HUNDRED TWENTY FOURTH STREET
BETWEEN FELTON AVENUE AND TAHOE AVENUE.

PRIVATE CONTRACT NO. 256
W.S. 25
SHEET 2 OF 4 SHEETS
SCALE: VERT. 1"=4'
HORIZ. 1"=40'
PREPARED IN THE OFFICE OF
HAROLD M. TEGART
BY: *Harold M. Tegart*
REG. C.E. 192151



FOR CONSTRUCTION NOTES SEE SHEET 1.

RECEIVED
JUN 9 1944
SANITATION DIVISION

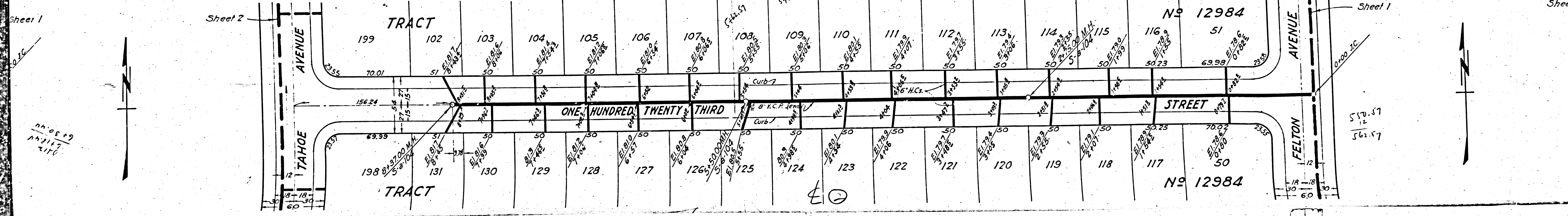
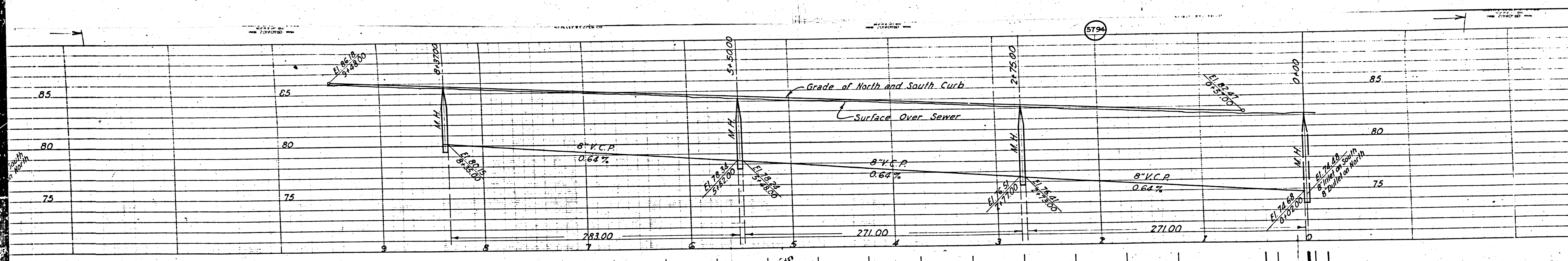
COUNTY OF LOS ANGELES, CALIFORNIA.

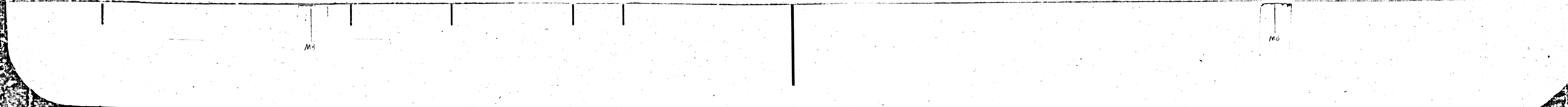
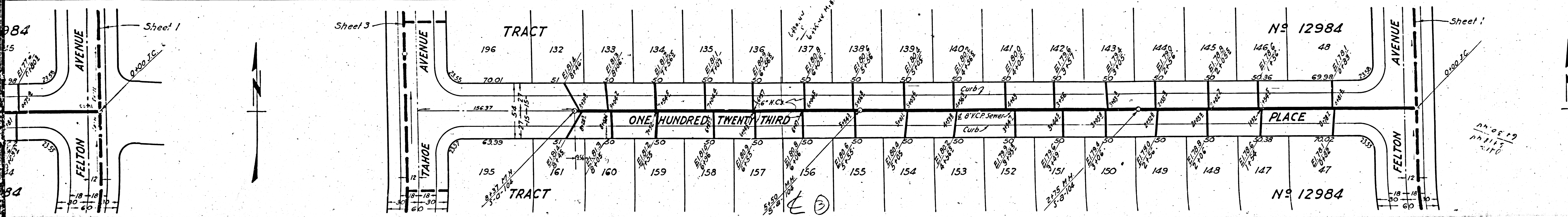
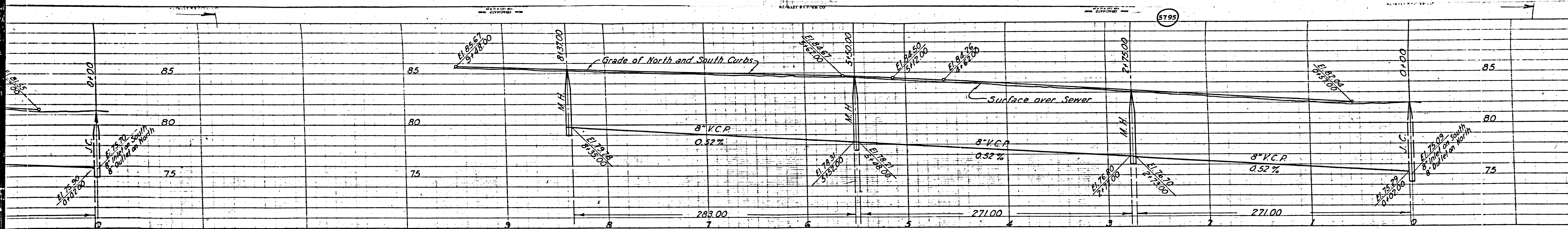
APPROVED: *Alfred J. ...*
COUNTY ENGINEER

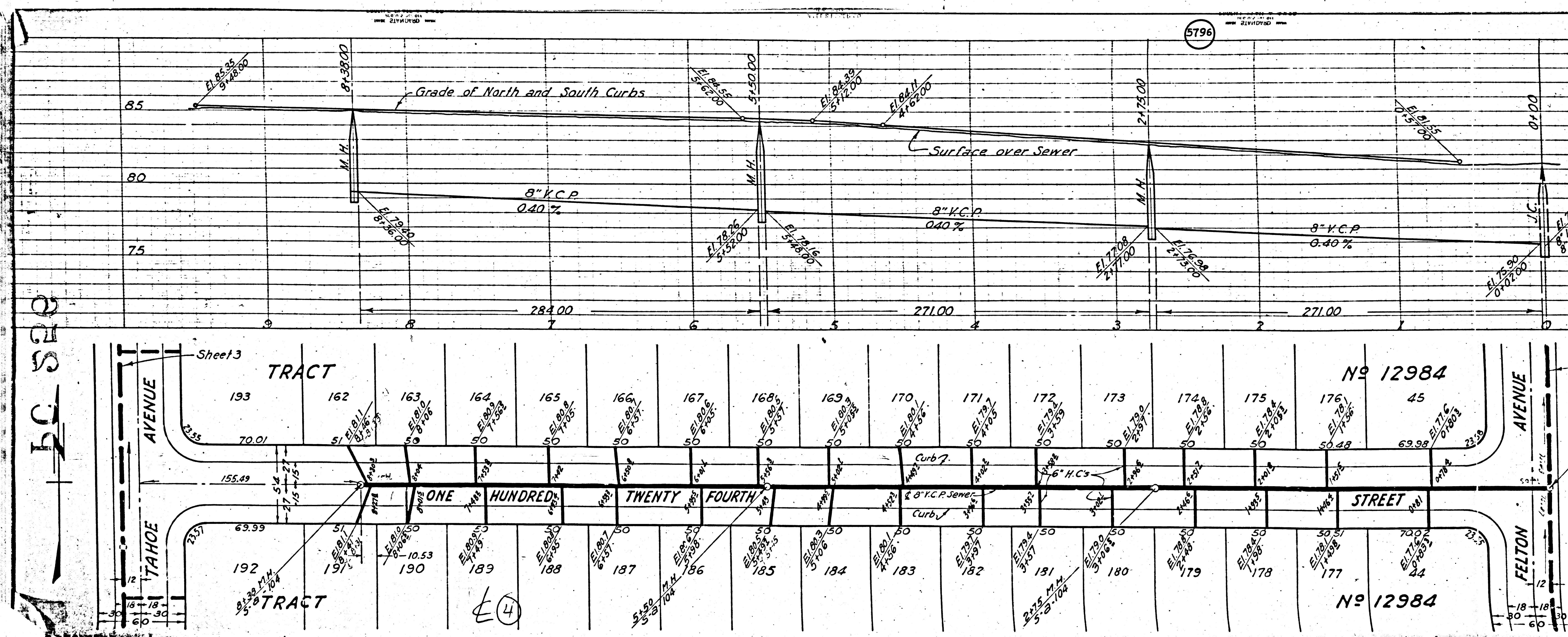
APPROVED: *...*
CHIEF ENGINEER OF COUNTY
SANITATION DISTRICT NO. 2

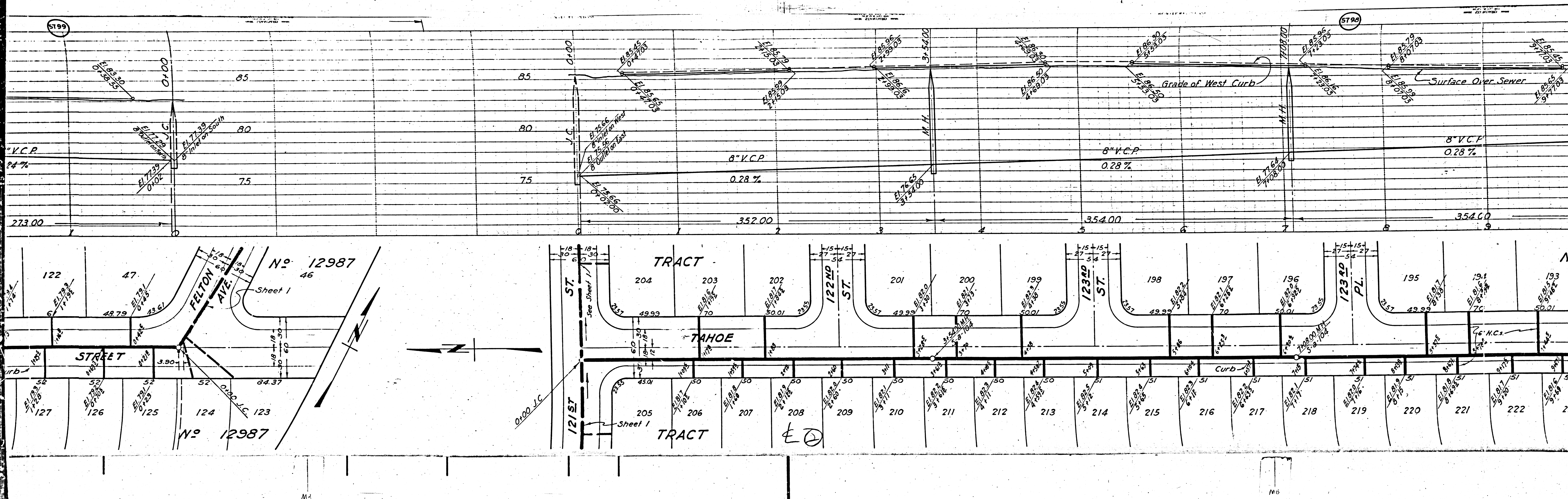
CHECKED BY: *...*
OFFICE OF COUNTY ENGINEER, REG. C.E. 192151

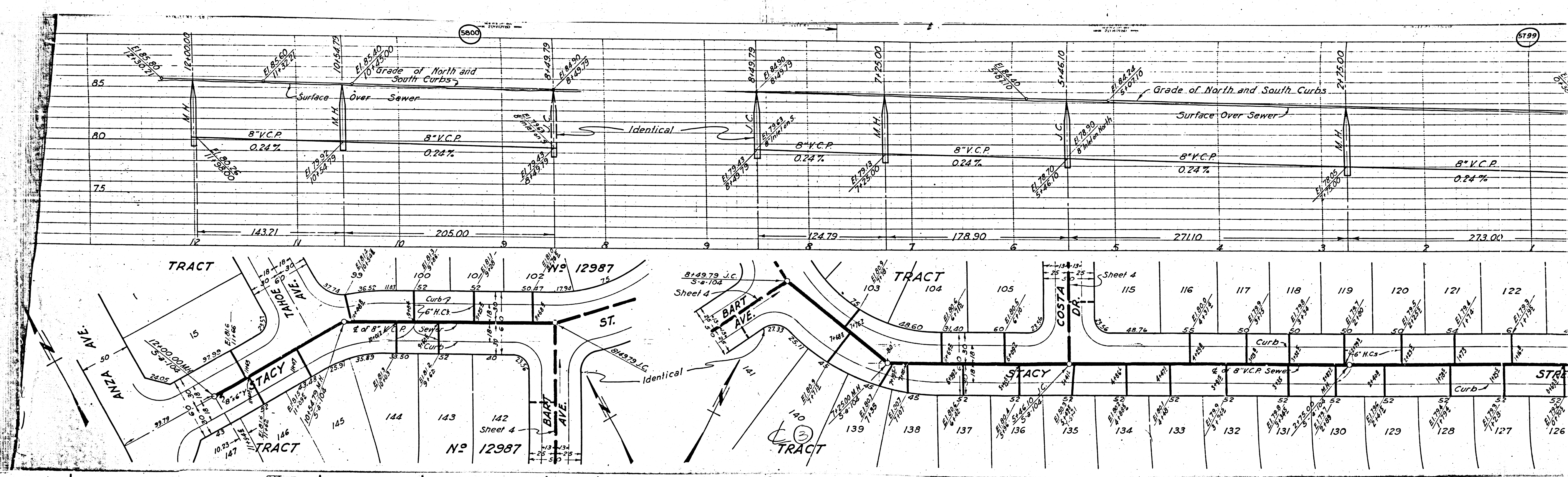
Final Ck. 7/7 11/6/44









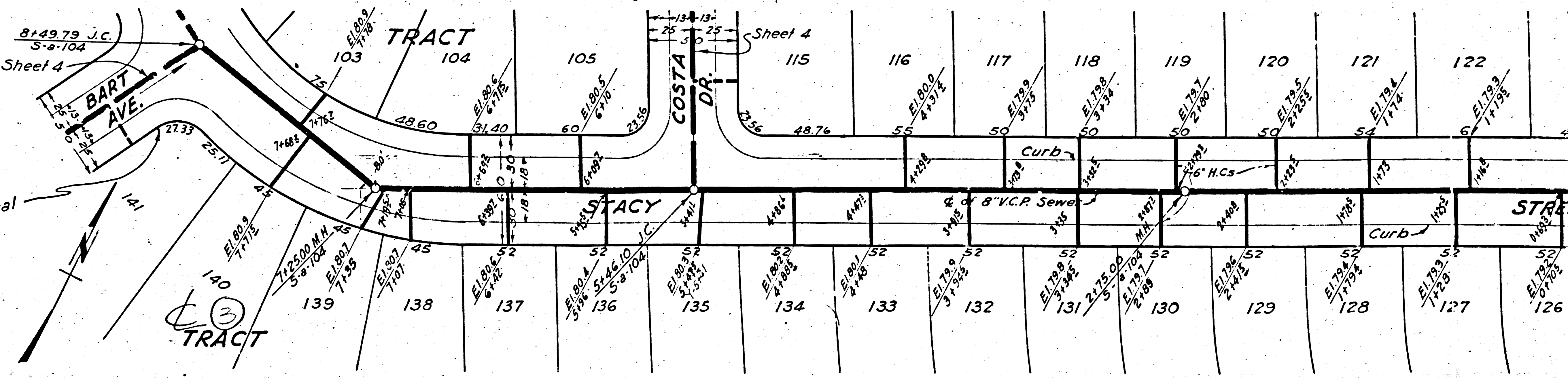
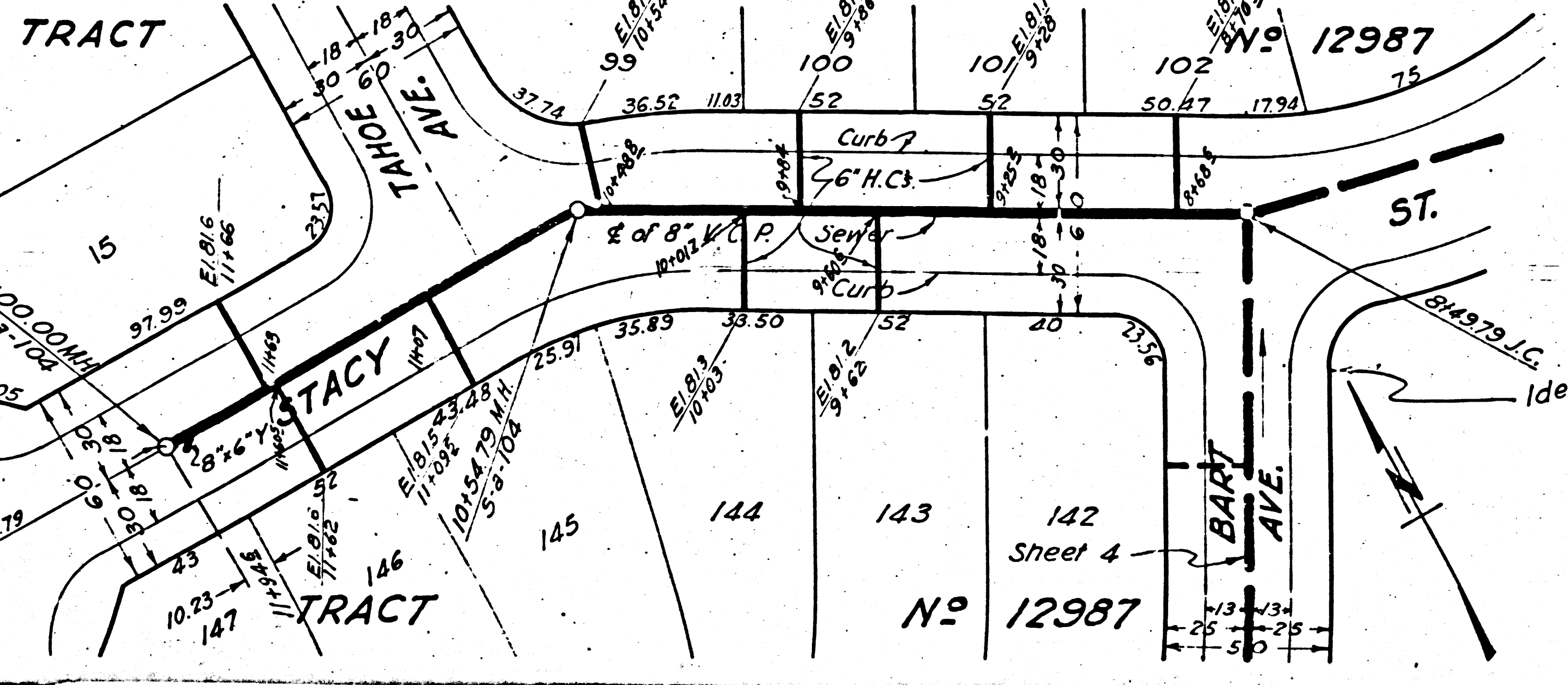


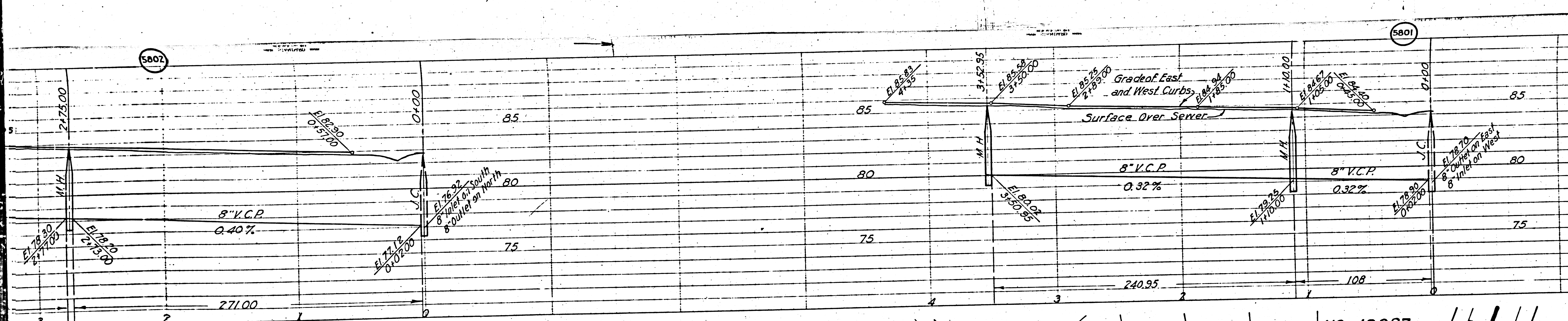
5800

5799

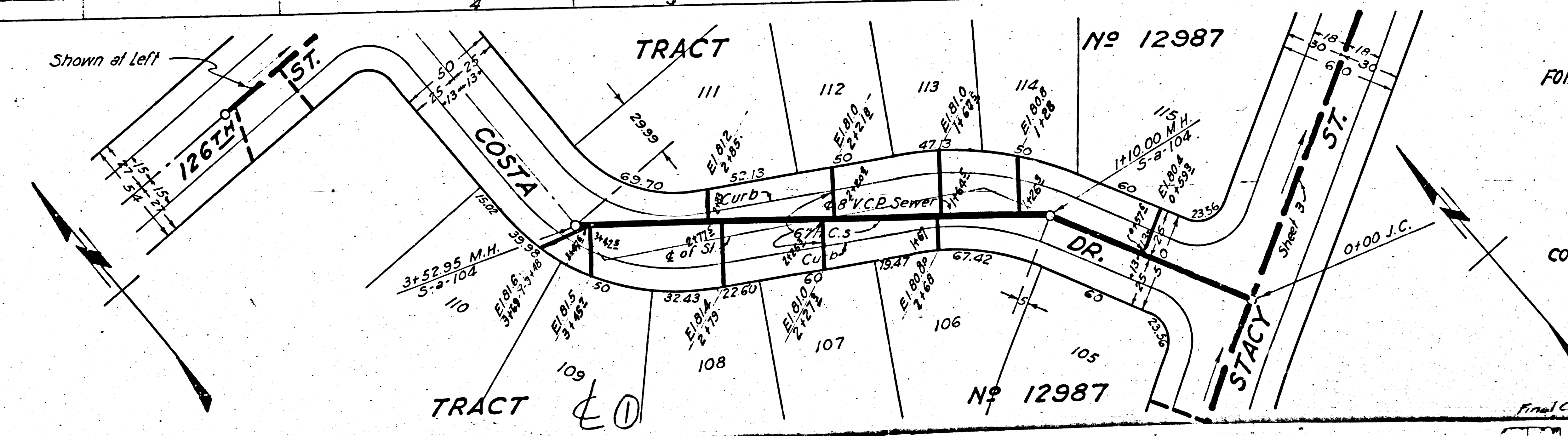
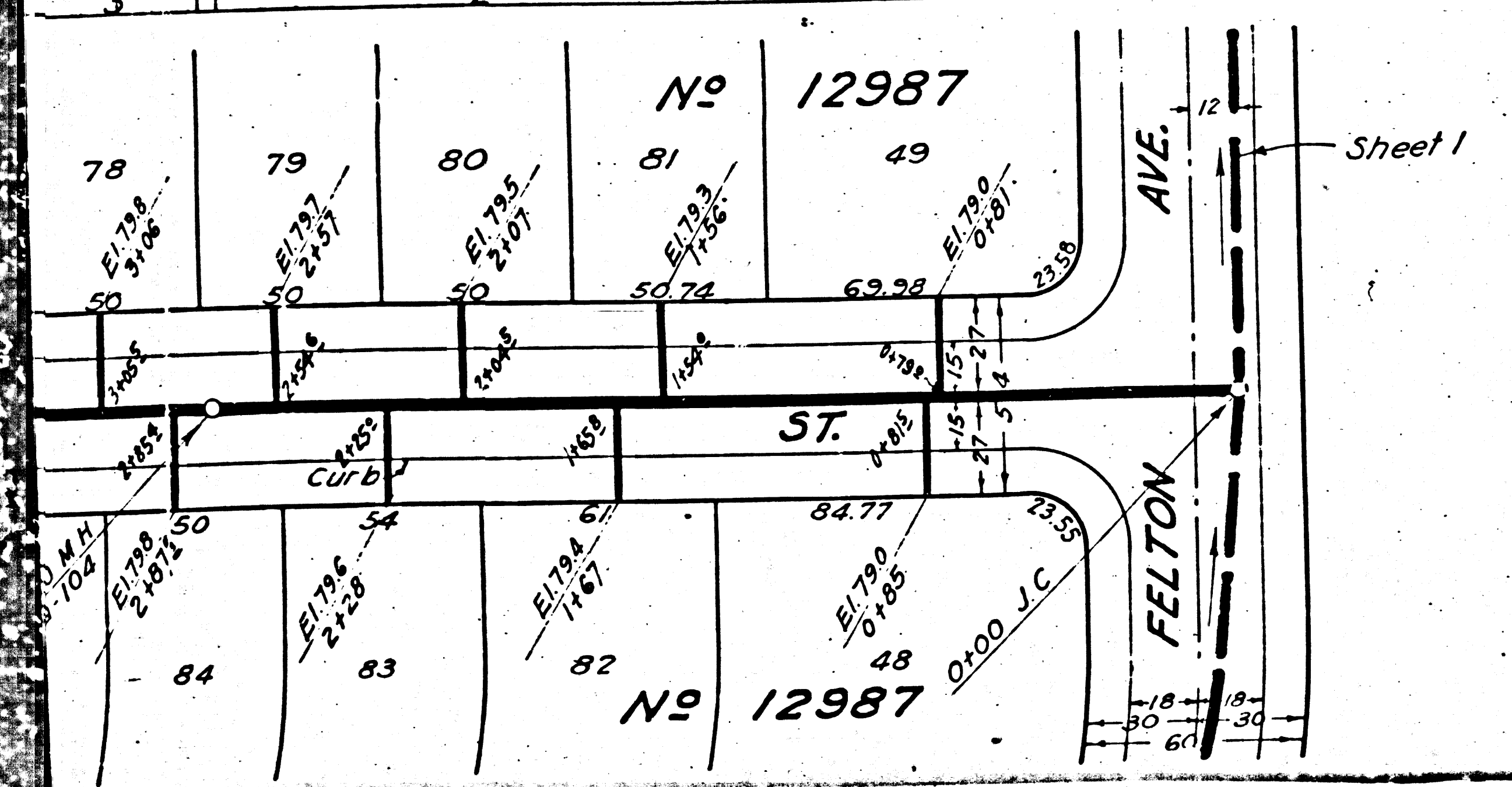
TRACT

TRACT





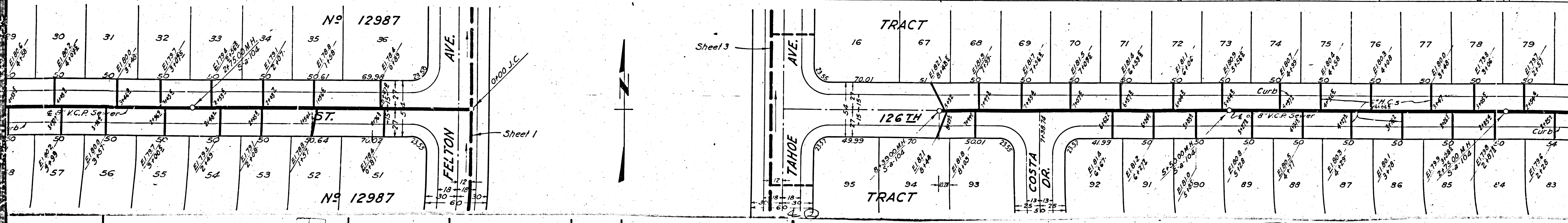
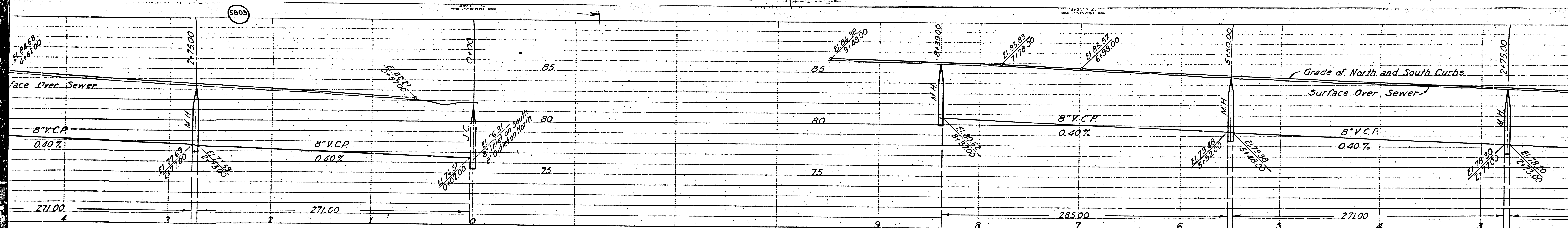
PROFILE, ALIGNMENT AND GRADE OF
SANITARY SEWERS
 TO BE CONSTRUCTED IN
COSTA DRIVE
 BETWEEN STACY STREET AND 126TH STREET
 ONE HUNDRED TWENTY SIXTH STREET
 BETWEEN FELTON AVENUE AND TAHOE AVENUE
 ONE HUNDRED TWENTY FIFTH STREET
 BETWEEN FELTON AVENUE AND TAHOE AVENUE
BART AVENUE
 BETWEEN EL SEGUNDO BOULEVARD AND STACY STREET
 PRIVATE CONTRACT NO 256
 W.S.25
 SHEET 4 OF 4 SHEETS
 SCALE: VERT. 1"=4'
 HORIZ. 1"=40'
 PREPARED IN THE OFFICE OF
 HAROLD M. TEGART
 BY: *Harold M. Tegar*
 REG. C.E. 12151.



FOR CONSTRUCTION NOTES SEE SHEET 1.

COUNTY OF LOS ANGELES, CALIFORNIA.
 APPROVED: *Alfred J. ...*
 COUNTY ENGINEER
 APPROVED: *...*
 CHIEF ENGINEER OF COUNTY
 SANITATION DISTRICT 1193.
 CHECKED BY: *...*
 OFFICE OF COUNTY ENGINEER, 115 S. W. 4TH ST.
 Final Ch. 777 1/16/44





5805

No 12987

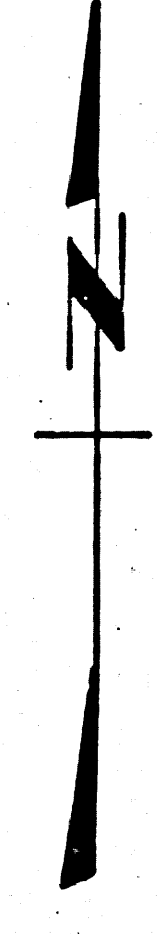
No 12987

Sheet 1

Sheet 3

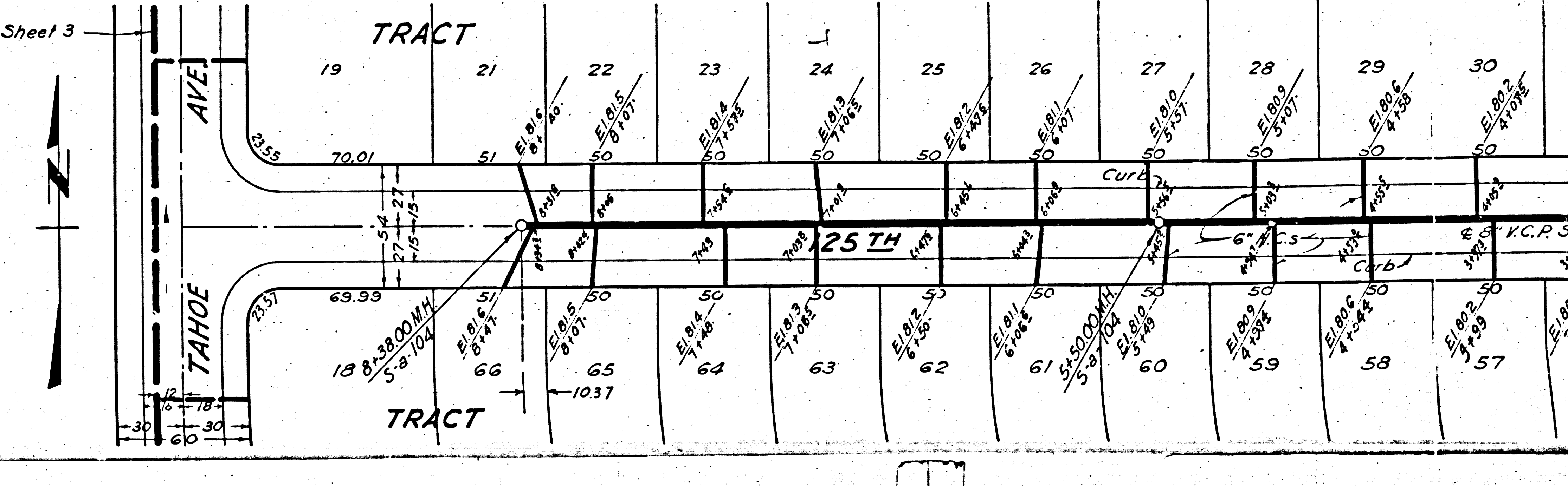
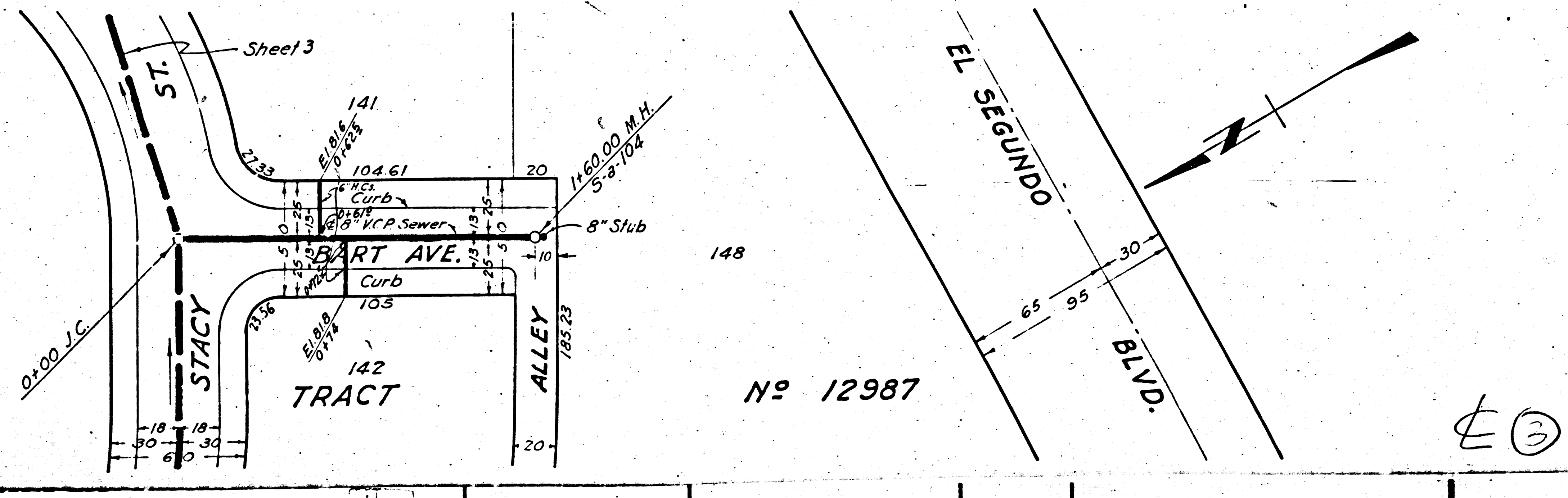
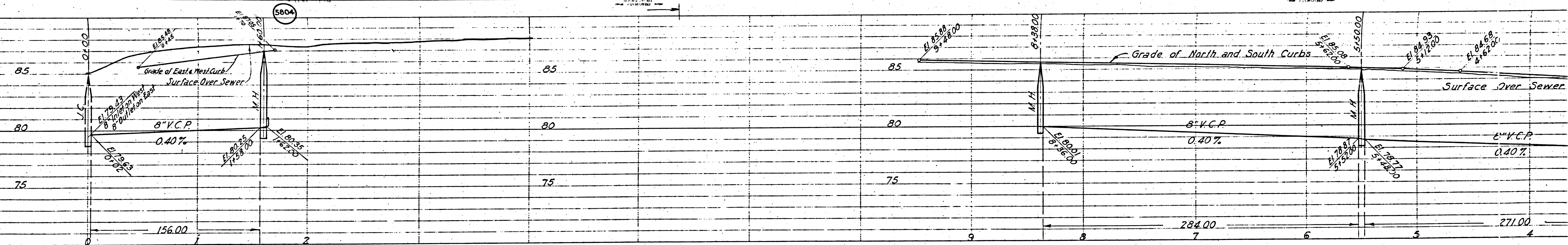
TRACT

TRACT



M3

No



M3

M5