

5896

R.M. LACITY P.E. 21411-19  
S.P.E. 3 CURB 17th ST - 5 FT W  
OF EPL PATTON AVE - EL. 260810

- (1) USE "JUST-RITE" MANHOLE FRAMES AND COVERS
- (2) USE STANDARD STRENGTH PIPE EXCEPT AS NOTED
- (3) USE CEMENT MORTAR FOR ALL VITRIFIED CLAY PIPE
- (4) RESURFACE ALL TRENCH WITHIN PAVED AREA TO MEET LOS ANGELES COUNTY ROAD DEPT. OR STATE HIGHWAY REQUIREMENTS
- (5) CONSTRUCT HOUSE CONNECTIONS WITH INVERT AT PROPERTY LINE 5 FEET BELOW CURB GRADE
- (6) ENCASE FOUR FEET DE SEWER AT POINTS OF INTERFERENCE WITH POLES AS PER S-A-C

PROFILE, ALIGNMENT AND GRADE OF  
**SANITARY SEWERS**  
TO BE CONSTRUCTED IN  
**BUTTE ST.**  
BETWEEN SIXTH ST. AND SEVENTH ST.

PRIVATE CONTRACT NO. 261  
W.S. 23

SCALE: VERT. 1" = 4'  
HORIZ. 1" = 20'

PREPARED IN THE OFFICES OF

R.V. PEARSALL PRIVATE ENGINEER

BY *R. V. Pearsall*  
REC'D NO. 3204

FOR LEGEND  
SEE PLAN NO. S-8-64

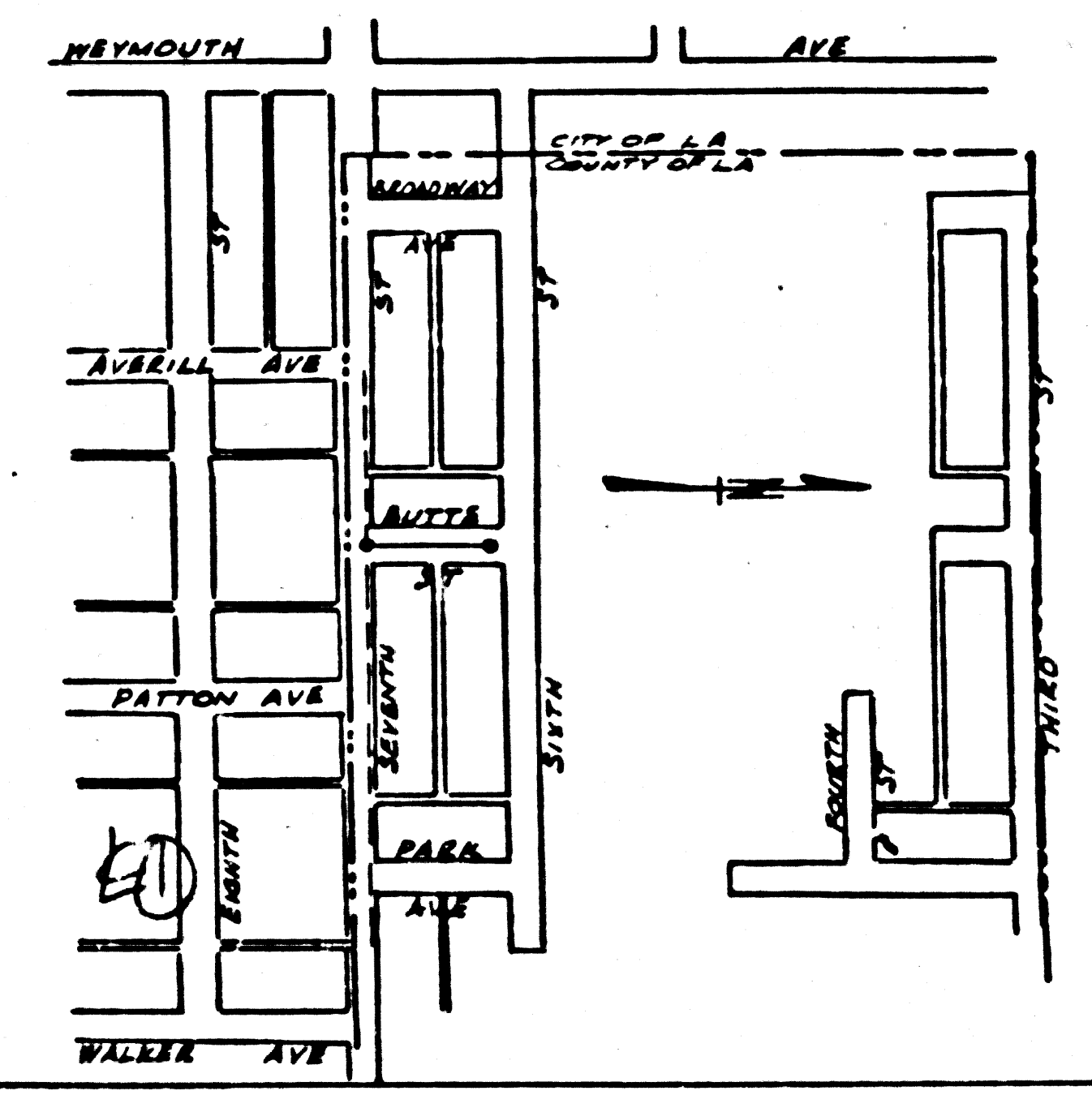
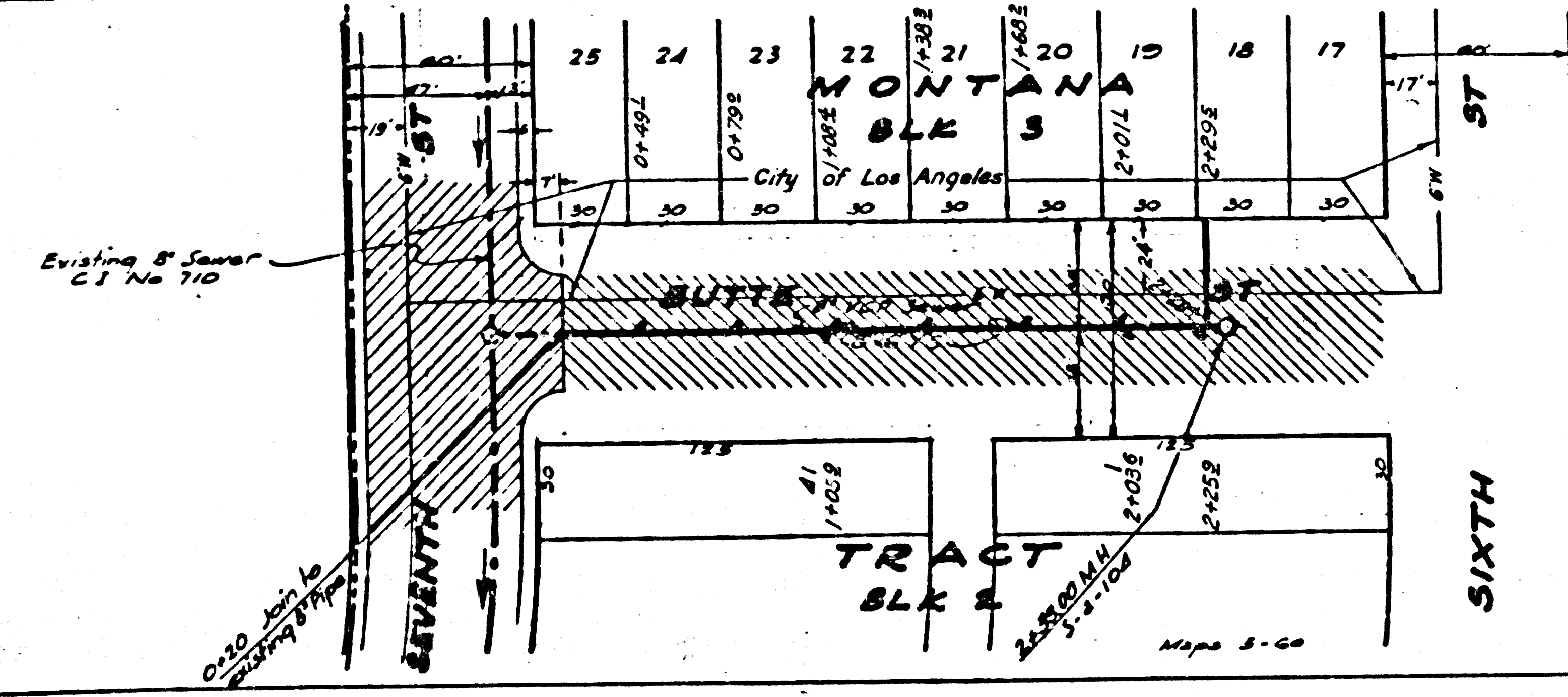
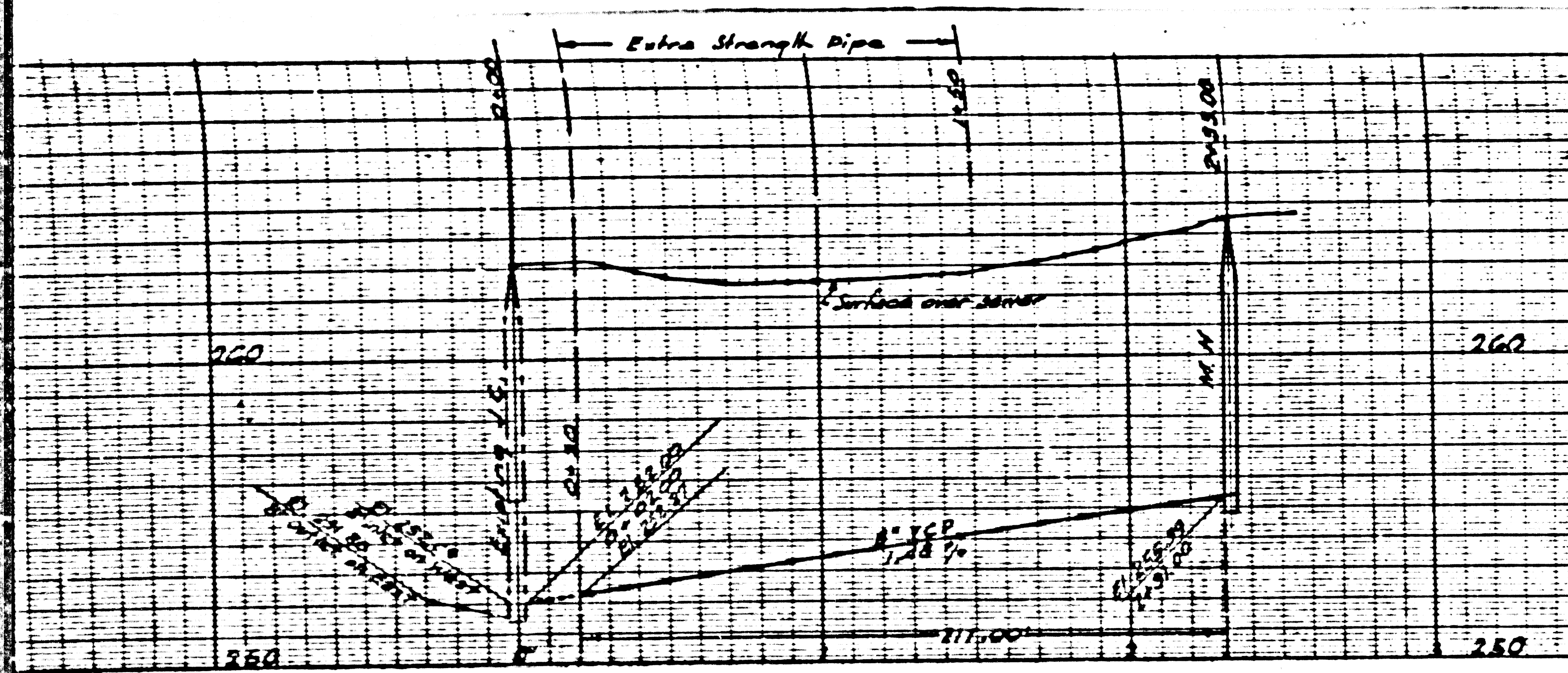
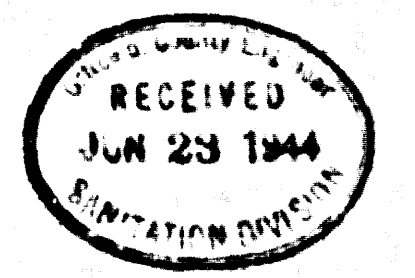
NOTE: GRADES TO WHICH THE IMPROVEMENT IS TO BE CONSTRUCTED ARE SHOWN ON PLANS AND PROFILE. GRADE POINTS FOR TOP OF CURB, CENTER LINE OF STREET OR CENTER LINE OF ALLEY ARE SHOWN BY CIRCLES ON PROFILE. AT ALL POINTS BETWEEN DESIGNATED POINTS THE GRADE SHALL BE ESTABLISHED SO AS TO CONFORM TO A STRAIGHT LINE DRAWN BETWEEN SAID DESIGNATED POINTS. ELEVATIONS ARE IN FEET ABOVE U. S. DATUM OR MEAN SEA LEVEL. THIS DRAWING AND THE DATA HEREON ARE HEREBY MADE A PART OF THE SPECIFICATIONS. WORK SHALL BE CONSTRUCTED ACCORDING TO SPECIFICATIONS ON FILE IN THE OFFICE OF THE COUNTY ENGINEER, AND SHALL BE PROSECUTED ONLY IN THE PRESENCE OF THE COUNTY ENGINEER. BEFORE WORK CAN BE STARTED, THE CONTRACTOR MUST OBTAIN A PERMIT TO EXCAVATE IN COUNTY STREETS FROM THE L. A. COUNTY ROAD DEPT., HIGH ROAD RECORDS, AND MAKE A DEPOSIT WITH THE COUNTY ENGINEER, 700 UNION LEAGUE BUILDING, SUFFICIENT TO COVER THE COST OF CONSTRUCTION INSPECTION AND SIGNING PLANS. IF WORK IS TO BE DONE IN A STATE HIGHWAY, A PERMIT MUST BE OBTAINED FROM THE STATE OF CALIFORNIA, DIVISION OF HIGHWAYS, 808 STATE BUILDING, AFTER MAKING THE DEPOSIT WITH THE COUNTY ENGINEER.

COUNTY OF LOS ANGELES, CALIFORNIA

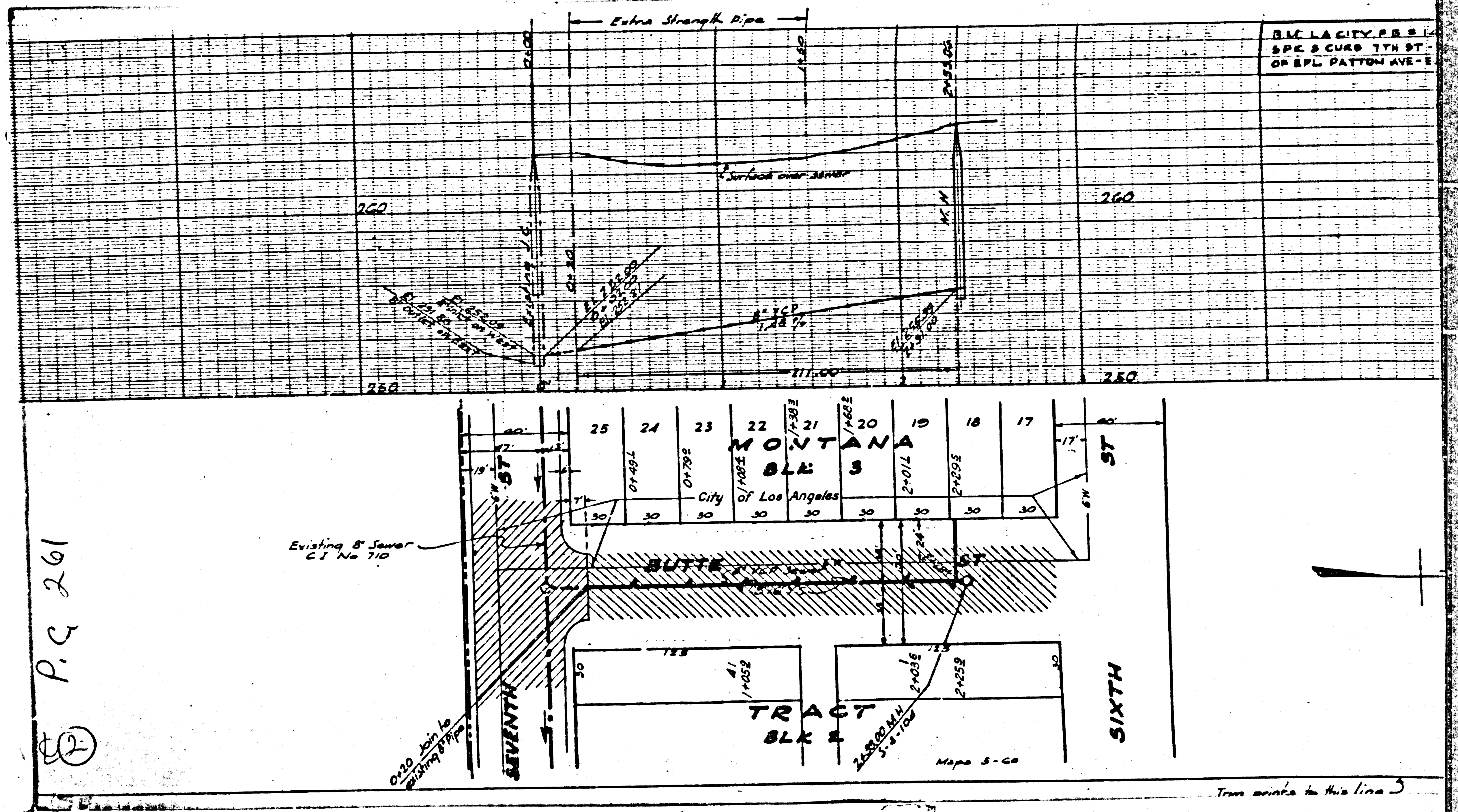
APPROVED *Alfred Jones*  
COUNTY ENGINEER

APPROVED *Carl ...*  
CHIEF ENGINEER COUNTY SANITARIAN DISTRICT NO. 2

CHECKED BY *M. Bellman*  
OFFICE OF COUNTY ENGINEER 808 STATE BLDG.



BC 501



P.C. 261  
 (2)

