

PLANET, 04-16 L.A. CO. F.C. DIST. F.C. 45-6
 80' N. EL SEGUNDO BLVD. TO E. WILSON CHANNEL
 Brass Disc In Sulphur, Due E. of Oil Derrick.

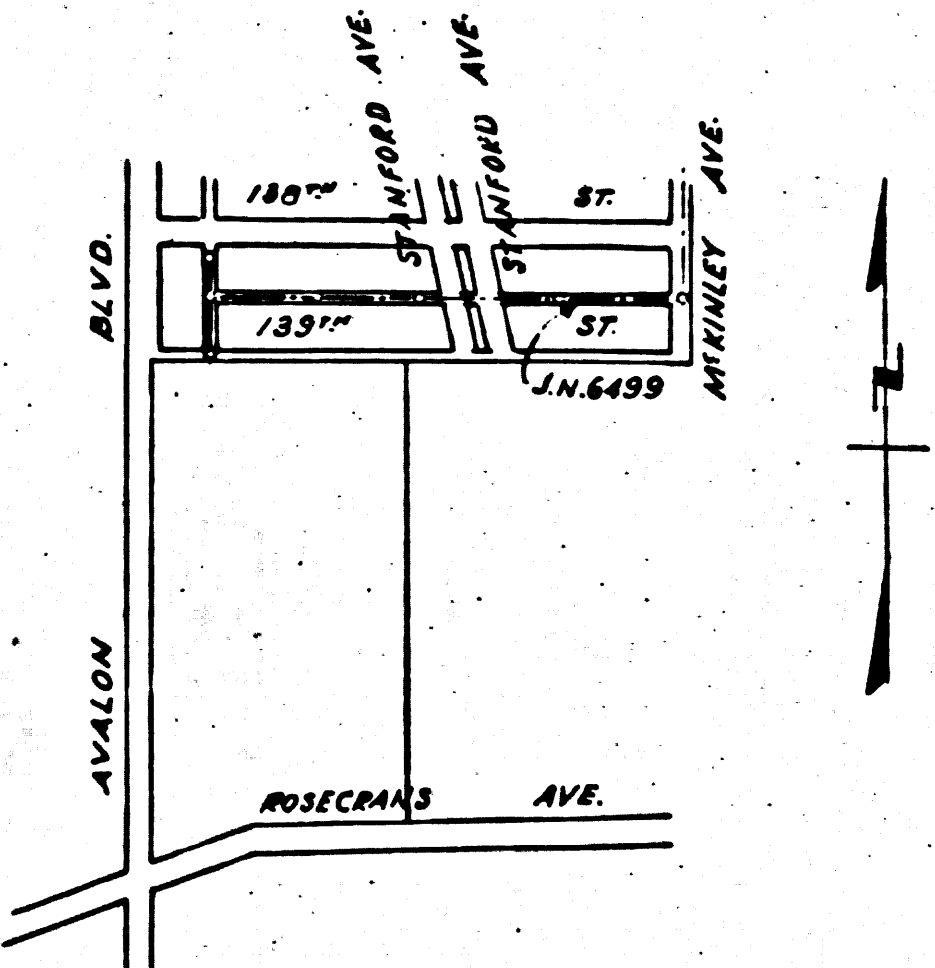
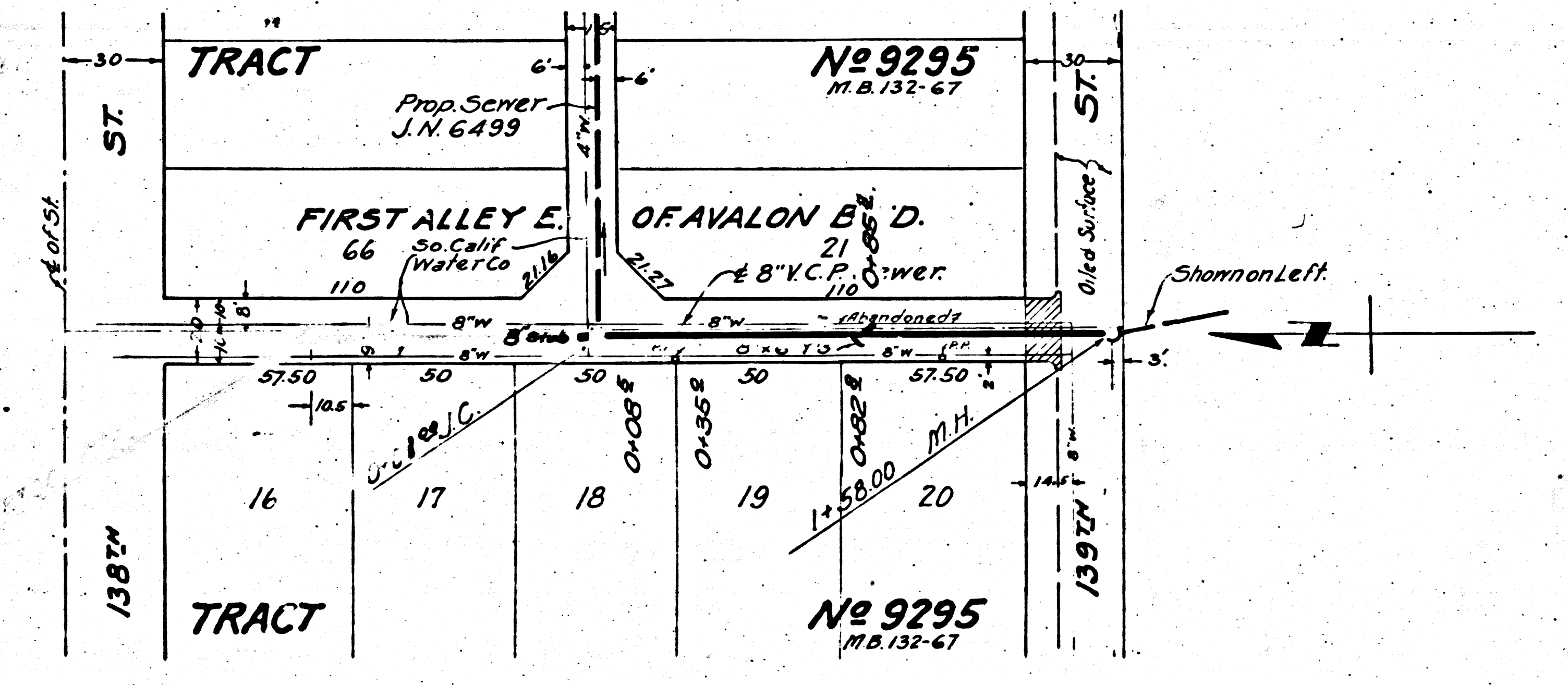
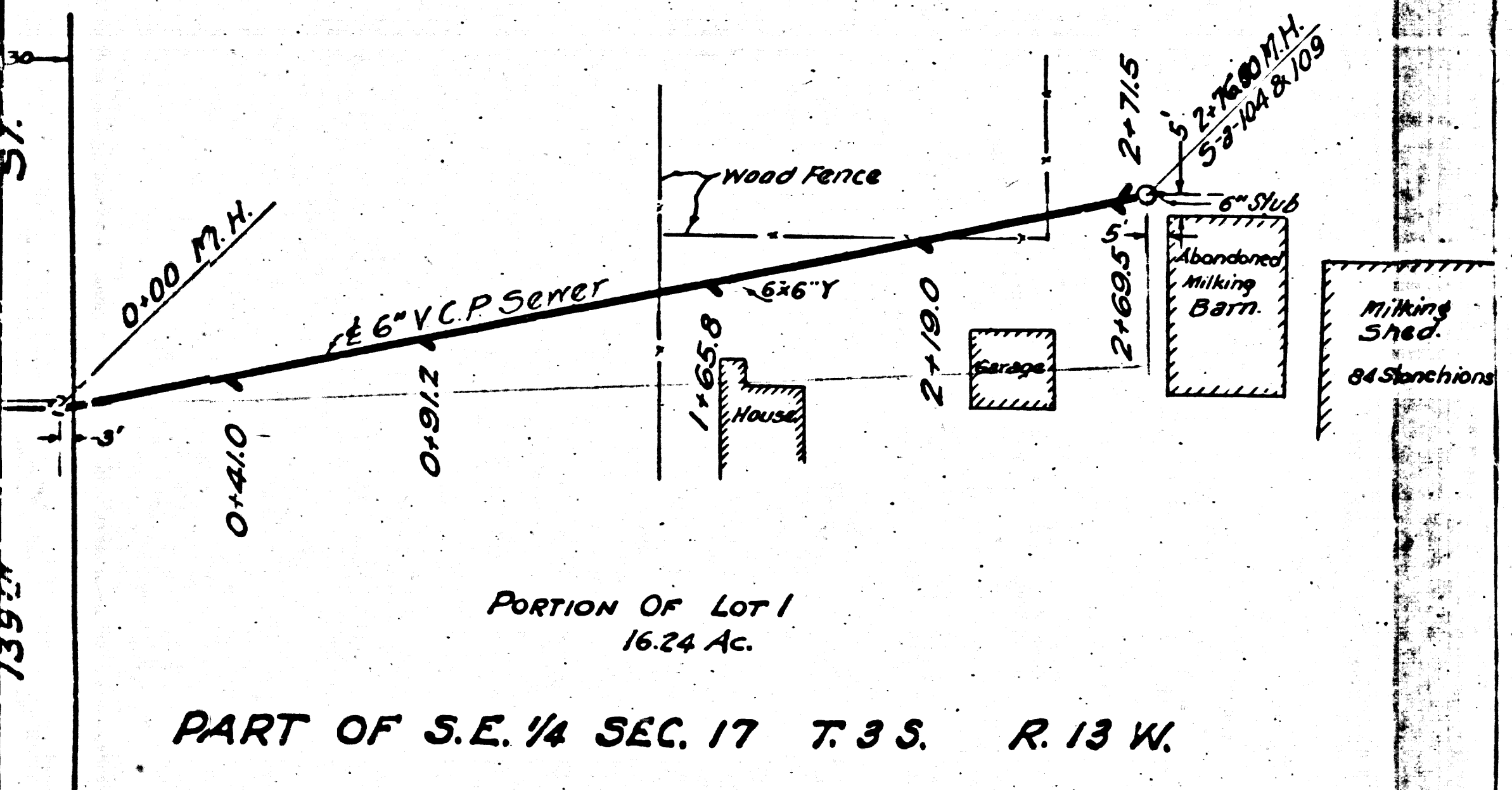
- 1 USE JUST-RITE MANHOLE FRAMES AND COVERS (EXCEPT AS NOTED)
- 2 USE STANDARD STRENGTH PIPE
- 3 USE CEMENT MORTAR FOR ALL V.C.P. JOINTS
- 4 RESURFACE ALL TRENCH WITHIN PAVED AREA TO MEET LOS ANGELES CO. ROAD DEPT. REQUIREMENTS
- 5 EXCAVE FOUR FEET OF SEWER AT POINTS OF INTERFERENCE WITH POLES AS PER PLAN NO. S-2-104
- 6 ALL STRUCTURES SHALL BE CONSTRUCTED AS PER PLAN NO. S-2-104

PROFILE, ALIGNMENT AND GRADE OF
SANITARY SEWERS
 TO BE CONSTRUCTED IN
FIRST ALLEY EAST OF AVALON BLVD.
 BETWEEN 138TH ST. AND 139TH ST.

PRIVATE CONTRACT NO. 269
 V.S. 26

SHEET 1 OF 1 SHEET

SCALE: VERT. 1" = 4'
 HORIZ. 1" = 40'
 FIELD WORK BY: *Frederick C. Stillson*
 DESIGNED BY: *George S. Blackmer*
 FREDERICK C. STILLSON - REG. C.E. NO. 1470
 GEORGE S. BLACKMER - REG. C.E. NO. 211



FOR LEGEND
 SEE PLAN NO. S-2-64

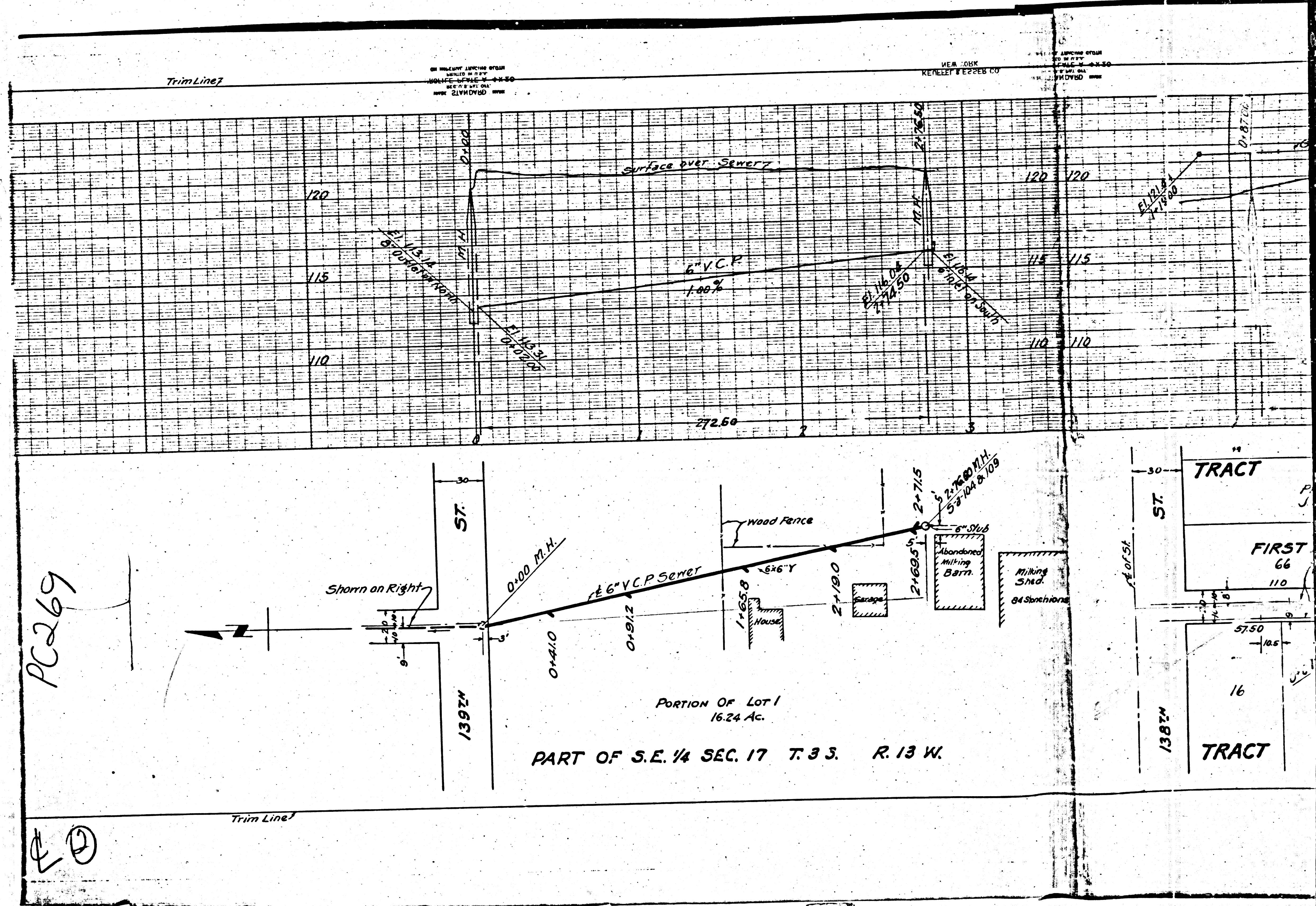
NOTE:
 GRADES TO WHICH THIS IMPROVEMENT IS TO BE CONSTRUCTED ARE SHOWN ON PLANS AND PROFILE. GRADE POINTS FOR TOP OF CURB, CENTER LINE OF STREET OR CENTER LINE OF ALLEY ARE SHOWN BY CIRCLES ON PROFILES. AT ALL POINTS BETWEEN DESIGNATED POINTS THE GRADE SHALL BE ESTABLISHED SO AS TO CONFORM TO A STRAIGHT LINE DRAWN BETWEEN SAID DESIGNATED POINTS.
 ELEVATIONS ARE IN FEET ABOVE U.S.C. & G.S. DATUM OR MEAN SEA LEVEL.
 THIS DRAWING AND THE DATA HEREON ARE HEREBY MADE A PART OF THE SPECIFICATIONS.
 WORK SHALL BE CONSTRUCTED ACCORDING TO SPECIFICATIONS ON FILE IN THE OFFICE OF THE COUNTY ENGINEER AND SHALL BE PROSECUTED ONLY IN THE PRESENCE OF THE COUNTY ENGINEER. BEFORE WORK CAN BE STARTED, THE CONTRACTOR MUST OBTAIN A PERMIT TO EXCAVATE IN COUNTY STREETS FROM L.A. COUNTY ROAD DEPT., 1104 HALL OF RECORDS, AND MAKE A DEPOSIT WITH THE COUNTY ENGINEER, 700 UNION LEAGUE BUILDING, SUFFICIENT TO COVER COST OF CONSTRUCTION INSPECTION AND RECORD PLANS.

COUNTY OF LOS ANGELES, CALIFORNIA.
 APPROVED: *Alfred Jones*
 COUNTY ENGINEER
 APPROVED: *C. R. Compton*
 ACTING CHIEF ENGINEER OF COUNTY
 SANITATION DISTRICT NO. 1

CHECKED BY: *W. Stillman* 13-419-3
 OFFICE OF COUNTY ENGINEER, REG. C.E. NO. 501

RECEIVED
 OCT 11 1944
 SANITATION DISTRICT

①



PC2269

①