

NOTES:
 Use "JUST RITE" manhole rings and covers. (Word "COUNTY" to be omitted from cover).
 Use Extra Strength Pipe.
 Use Cement Mortar for all Vitrified Clay Pipe joints.

Construct House Connections as per standard specifications with invert at property line & below curb grade.

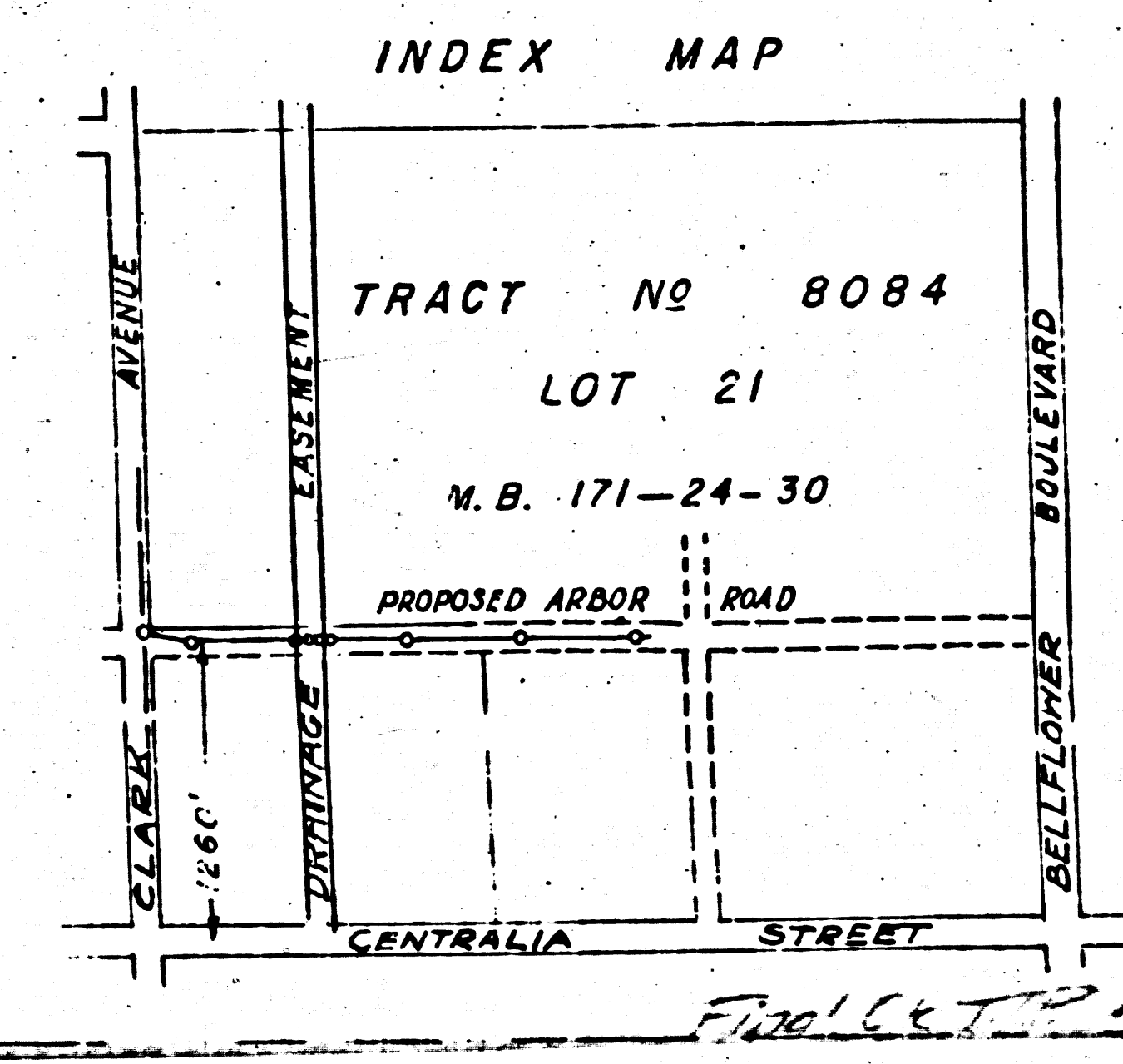
Encase four feet of Sewer at points of interference with poles as per S-a-6.

**PROFILE, ALIGNMENT AND GRADE OF
 SANITARY SEWER
 TO BE CONSTRUCTED IN
 PROPOSED ARBOR ROAD
 FROM CLARK AVE. TO STANBRIDGE AVE.
 IN LOT 21, TRACT NO. 8084, M.B. 171-24-30,
 1260' NORTH OF E OF CENTRALIA STREET**

W.S. 31
 PRIVATE CONTRACT NO. 281
 CONSISTING OF 1 SHEET
 SCALES: VERT. 1" = 4'
 HORIZ. 1" = 40'
 JANUARY, 1945

PREPARED IN THE OFFICES OF
 ADAMS AND ELLS ENGINEERS

BY *J. Adams* REG. C.E. NO. 617



NOTE:
 Grades to which this improvement is to be constructed are shown on Plans and Profile. Grade points for top of curb or center line of street are shown by circles on profile. At all points between designated points the grade shall be established so as to conform to a straight line drawn between such designated points.
 Elevations are in feet above U.S.S. Datum or mean sea level.
 This drawing and the data hereon are hereby made a part of the specifications.
 Work shall be constructed according to specifications on file in the office of the County Engineer and shall be prosecuted only in the presence of the County Engineer.
 Before work can be started the contractor must obtain a permit to excavate in County Streets from the Los Angeles County Road Dept., 110-4 Hall of Records.

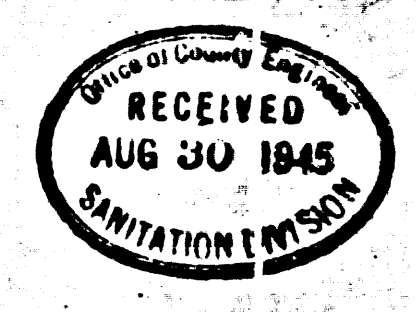
COUNTY OF LOS ANGELES, CALIFORNIA.

APPROVED: *Alfred Jones* COUNTY ENGINEER

APPROVED: *Wm. C. Neal* ACTING CHIEF ENGINEER COUNTY SANITATION DISTRICT NO. 2

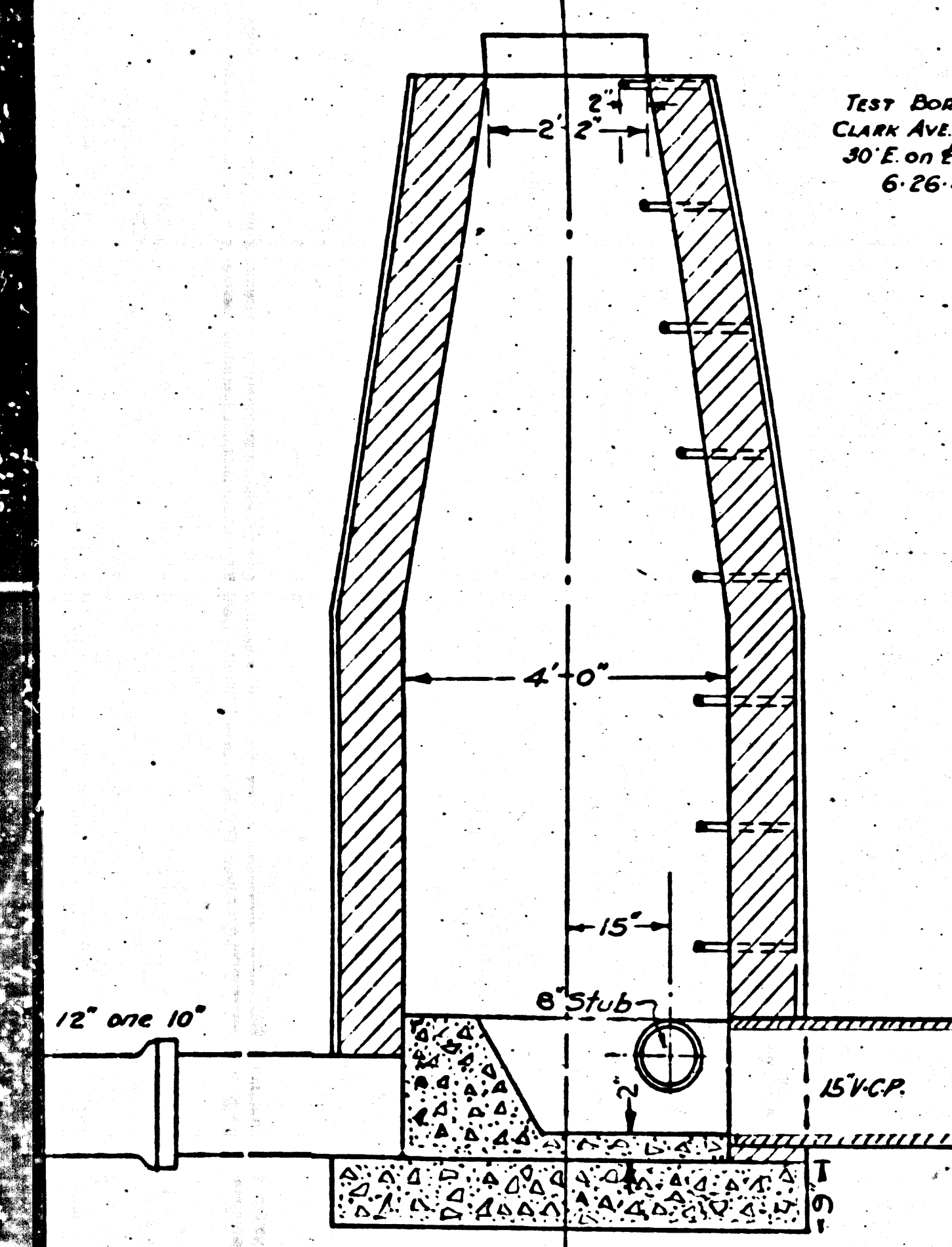
GENERAL MANAGER & ENGINEER, LAKEWOOD PUBLIC UTILITY DISTRICT.

CHECKED BY: *B. J. Hughes* 1-16-1945
 Office of County Engineer, Los Angeles, Calif. 90012 3335

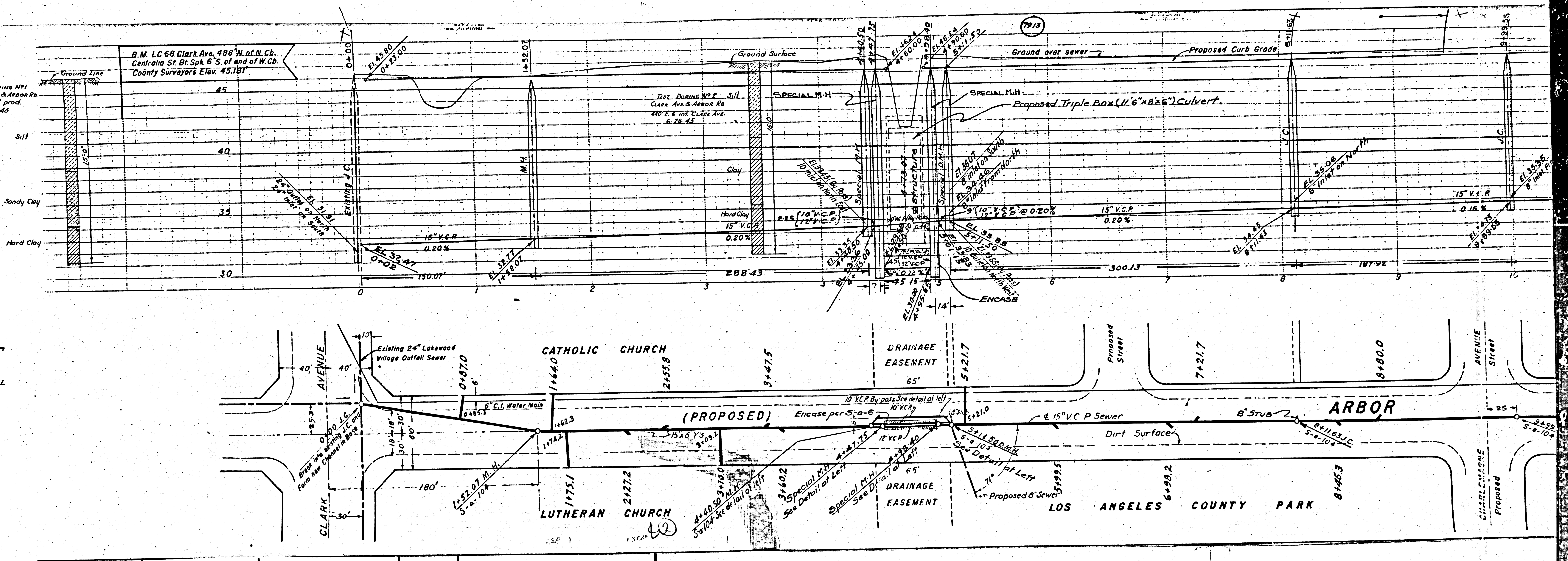


bc 581

Distance is 7'-0" on West side.



SECTION (INLET)
SECTION A-A
LET REVERSE
11-1



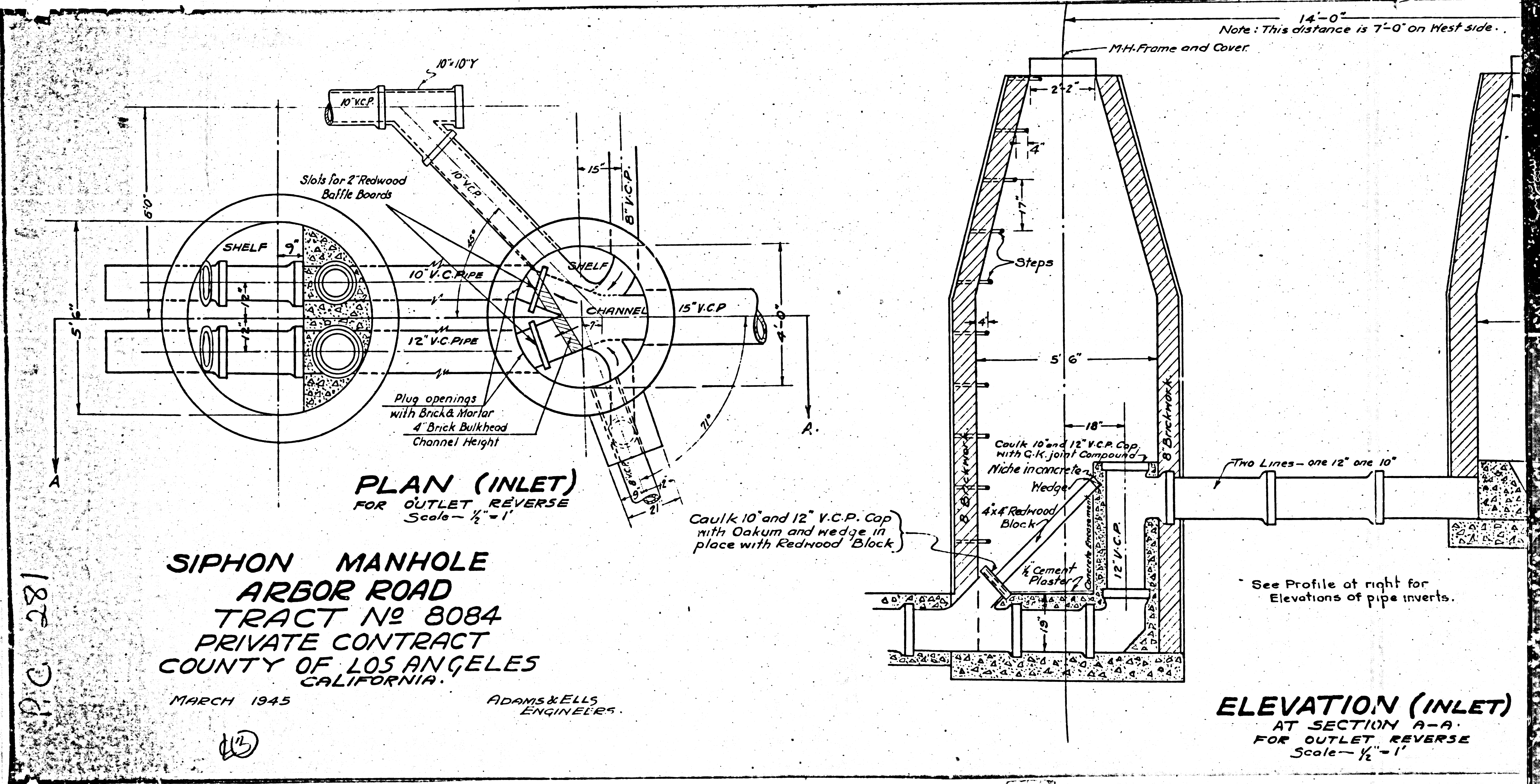
Test Boring #1
Clark Ave. & Arbor St.
30' E on E. prod.
6-26-45

R.M. LC 68 Clark Ave. 488' N. of N. Cb.
Centralia St. Bl. Spk. 6' S. of end of W. Cb.
County Surveyor's Elev. 45.181

Test Boring #2 Silt
Clark Ave. & Arbor St.
40' E. of Clark Ave.
6-26-45

ARBOR

LOS ANGELES COUNTY PARK



SIPHON MANHOLE
ARBOR ROAD
TRACT No 8084
PRIVATE CONTRACT
COUNTY OF LOS ANGELES
CALIFORNIA.

MARCH 1945
 ADAMS & ELLS
 ENGINEERS.

P.C. 281

(13)