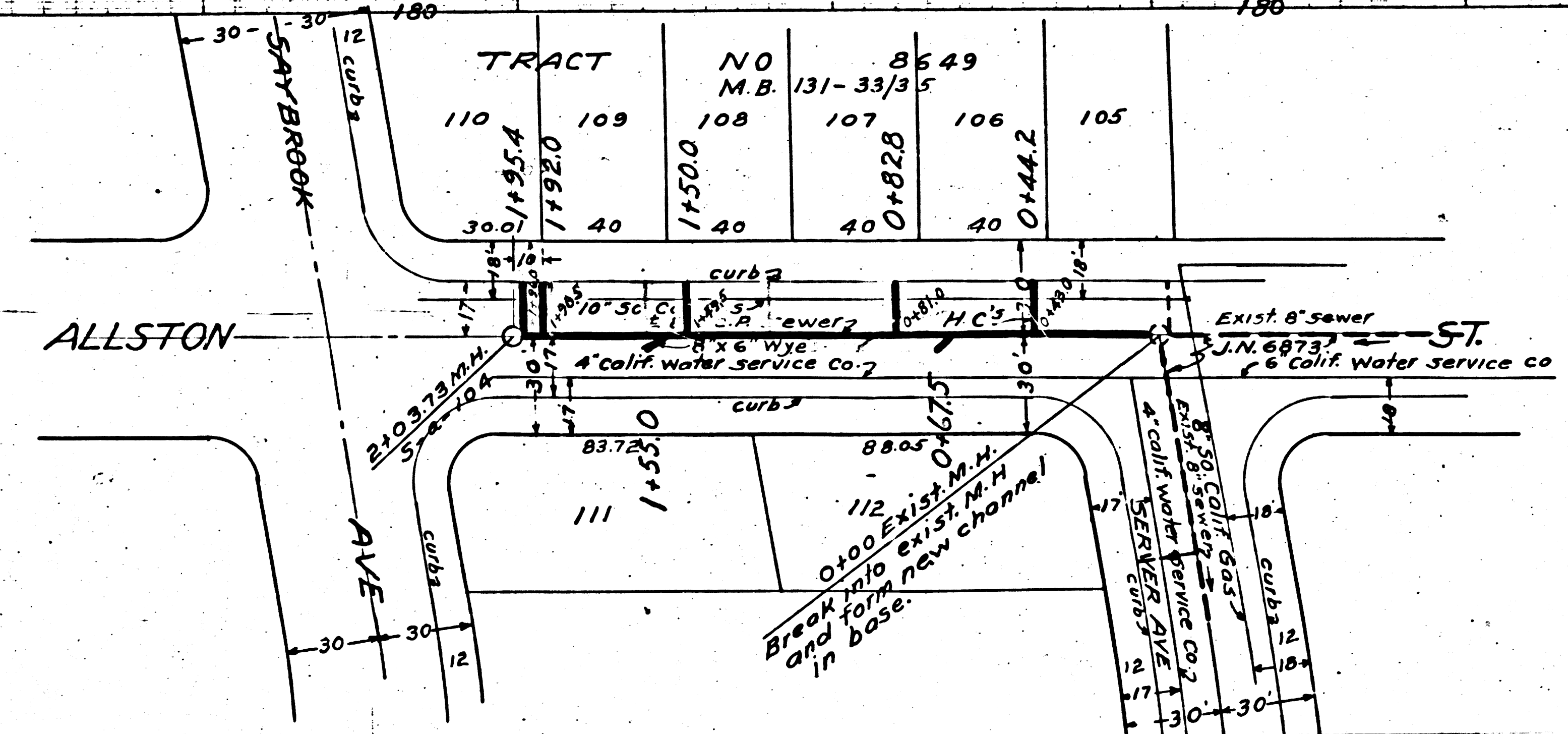


- 5943
1. Use "Just Rite" Manhole frame and cover
 2. Use standard strength pipe
 3. Use cement mortar for all pipe joints
 4. Resurface all trench with paved area to meet L.A. Co. Road Dept. requirements
 5. Encase four feet of sewer at points of interference with poles as per 5-a-6
 6. Construct House Connections with invert at curb line 3 ft. below curb grade.

PROFILE ALIGNMENT AND GRADE OF
SANITARY SEWER
 TO BE CONSTRUCTED IN
ALLSTON STREET
 BETWEEN
SERVER AVE. AND SAYBROOK AVE.
 PRIVATE CONTRACT NO 285
 V.I.S. NO 35
 ONE SHEET
 Scale Vert. 1"=4'
 Horiz. 1"=40'
 PREPARED IN THE OFFICE OF JONES & GILBERT
 By Paul Jones
 Registered C.E. NO. 2311



FOR LEGEND
 SEE PLAN NO. S-a-64

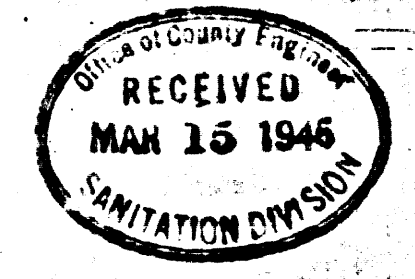
NOTE:
 Grades to which this improvement is to be constructed are shown on plan and profile. Grade points for tops of curb are shown by circles on profile.
 At all points between designated points the grade shall be established so as to conform to a straight line drawn between said designated points. Elevations are in feet above U.S. & S. datum or mean sea level. Work shall be constructed according to specifications on file in the office of Engineer and shall be prosecuted only in the presence of the County Engineer. Before work can be started the Contractor must obtain a permit to excavate in county streets from the L.A. County Road Dept. 104 Hall of Records, and make a deposit with the County Engineer, 700 Union League Bldg. Sufficient to cover cost of construction inspection and record plans.

COUNTY OF LOS ANGELES

Approved Alfred Jones
 County Engineer

Approved William Hillman
 Chief Engineer of County
 Sanitation District No. 2

Checked by William Hillman 3-13-45
 Office of County Eng. Reg. C.E. NO. 5029



bc 582