

1. USE SPECIAL MANHOLE FRAMES AND COVERS 5'-0\"/>
- 2. USE STANDARD STRENGTH PIPE
- 3. USE CEMENT MORTAR FOR VITRIFIED CLAY PIPE JOINTS
- 4. RESURFACE ALL TRENCH WITHIN PAVED AREA TO MEET LOS ANGELES COUNTY ROAD DEPT. REQUIREMENTS
- 5. CONSTRUCT HOUSE CONNECTIONS WITH INVERTS AT PROPERTY LINE 4 FEET BELOW CURB GRADE EXCEPT AS NOTED
- 6. FINISH FOUR FEET OF SEWER AT POINTS OF INTERFERENCE WITH POLES AS PER 5-a-6
- 7. ALL STRUCTURES SHALL BE BRICK SEWER STRUCTURES 5'-0\"/>
- 8. CONSTRUCT TOPS OF ALL STRUCTURES IN RIGHTS OF WAY 6\"/>
- 9. FINISHED GRADE

PROFILE, ALIGNMENT AND GRADE OF
SANITARY SEWERS
 TO BE CONSTRUCTED IN
MCKINLEY AVE.
 BETWEEN SLY BOUNDARY CITY OF LOS ANGELES & SLY LINE TRACT NO 12127

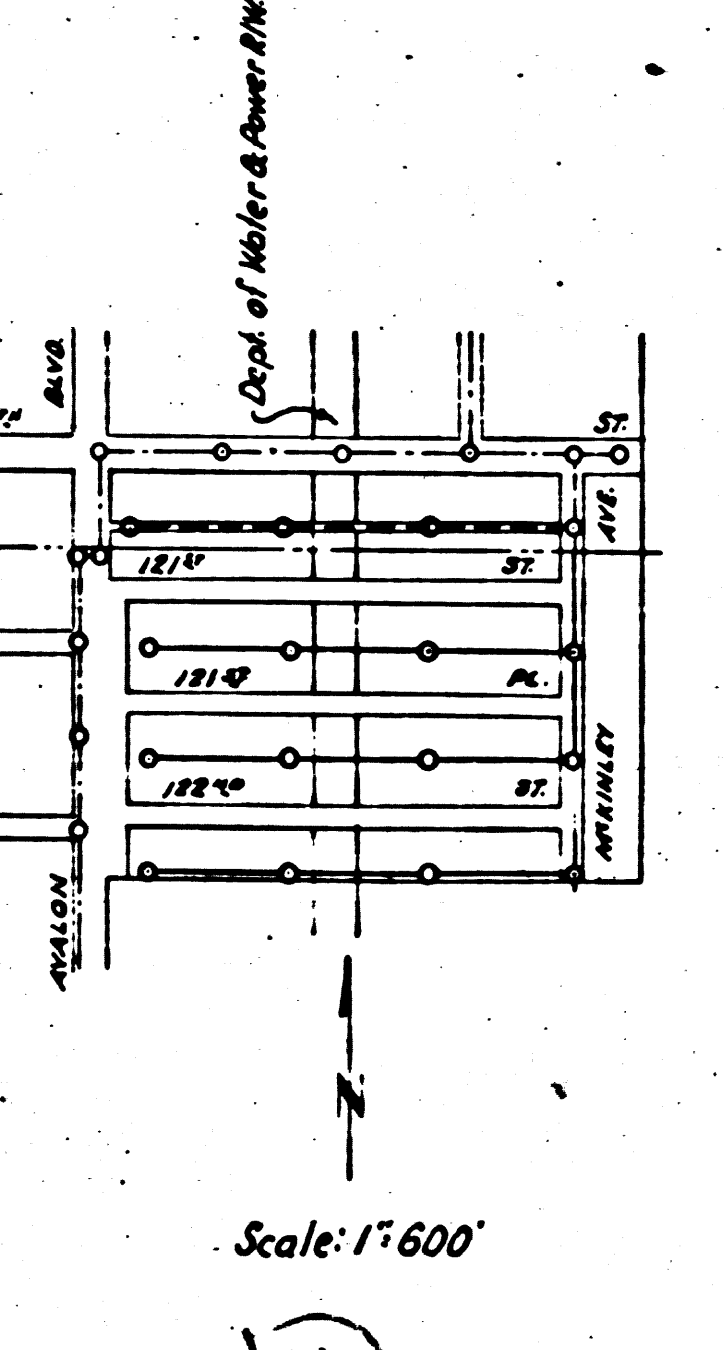
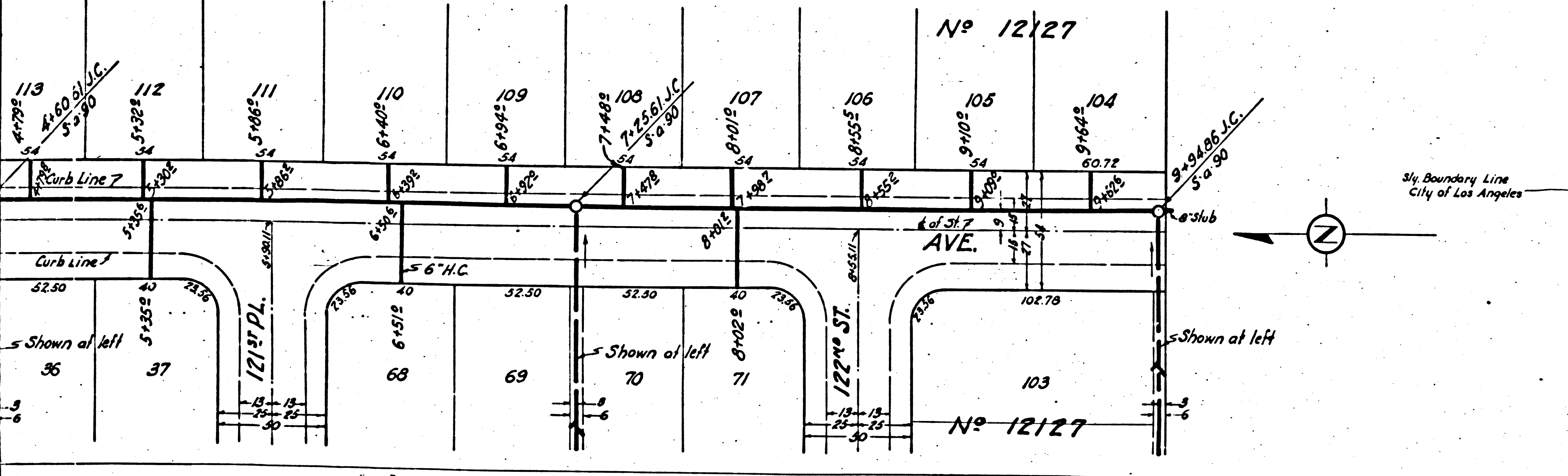
SANITARY SEWER RIGHTS OF WAY
 IN TRACT NO 12127 M.B.

PRIVATE CONTRACT NO 291
 W.S. 26

ONE SHEET FEB. 1945

SCALE VERT. 1" = 4'
 HORIZ. 1" = 40'

PREPARED IN THE OFFICES OF
SEABOARD ENGINEERING CO.
 BY: *Mark A. Rolin*
 Reg. C.E. No. 2039



SUBMITTED *April 14, 1945*
 BY: *Mark A. Rolin*
 ENGINEER OF DESIGN
Robert H. Smith
 DUTY ENGINEER (PERMAN)

APPROVED *April 11, 1945*
Send Allen
 CITY ENGINEER

J.E.G. 4-10-45

FOR LEGEND
 SEE PLAN NO. S-0-64

NOTE:
 GRADES TO WHICH THIS IMPROVEMENT IS TO BE CONSTRUCTED ARE SHOWN ON PLAN AND PROFILE. GRADE POINTS FOR TOP OF CURB, CENTER LINE OF STREET OR CENTER LINE OF ALLEY ARE SHOWN BY CIRCLES ON PROFILES AT ALL POINTS BETWEEN DESIGNATED POINTS. THE GRADE SHALL BE ESTABLISHED SO AS TO CONFORM TO A STRAIGHT LINE DRAWN BETWEEN SAID DESIGNATED POINTS. ELEVATIONS ARE IN FEET ABOVE U.S.S. DATUM OR MEAN SEA LEVEL.

THIS DRAWING AND THE DATA HEREON ARE HEREBY MADE A PART OF THE SPECIFICATIONS. WORK SHALL BE CONSTRUCTED ACCORDING TO SPECIFICATIONS ON FILE IN THE OFFICE OF THE COUNTY ENGINEER AND SHALL BE PROSECUTED ONLY IN THE PRESENCE OF THE COUNTY ENGINEER. BEFORE WORK CAN BE STARTED, THE CONTRACTOR MUST OBTAIN A PERMIT TO EXCAVATE IN COUNTY STREETS FROM THE L.A. COUNTY ROAD DEPT., 104 HALL OF RECORDS, AND MAKE A DEPOSIT WITH THE COUNTY ENGINEER, 700 UNION LEAGUE BUILDING, SUFFICIENT TO COVER THE COST OF CONSTRUCTION INSPECTION AND RECORD PLANS.

COUNTY OF LOS ANGELES, CALIFORNIA.
 APPROVED *Alfred Jones*
 COUNTY ENGINEER
 APPROVED *Carl L. ...*
 CHIEF ENGINEER OF COUNTY SANITATION DISTRICT NO. 1

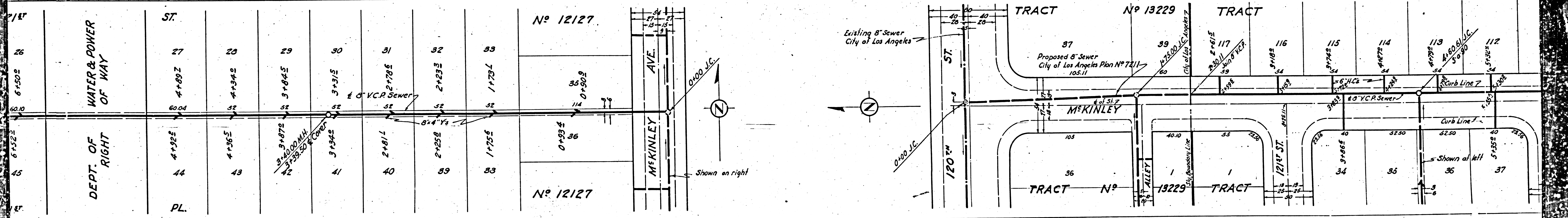
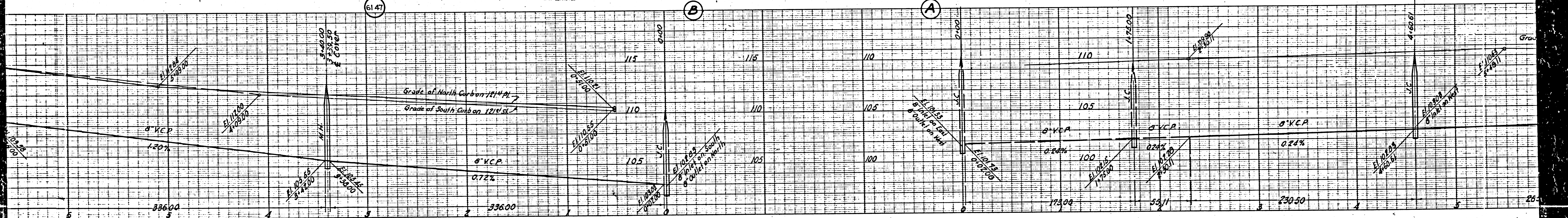
CHECKED BY *W. ...* 4-9-1945
 OFFICE OF COUNTY ENGINEER, REG. CL. NO. 5025

RECEIVED
 MAY 2 1945
 SANITATION DISTRICT NO. 1

BC 501

Final Ck. T.P. 8/30/45
 Trim Line

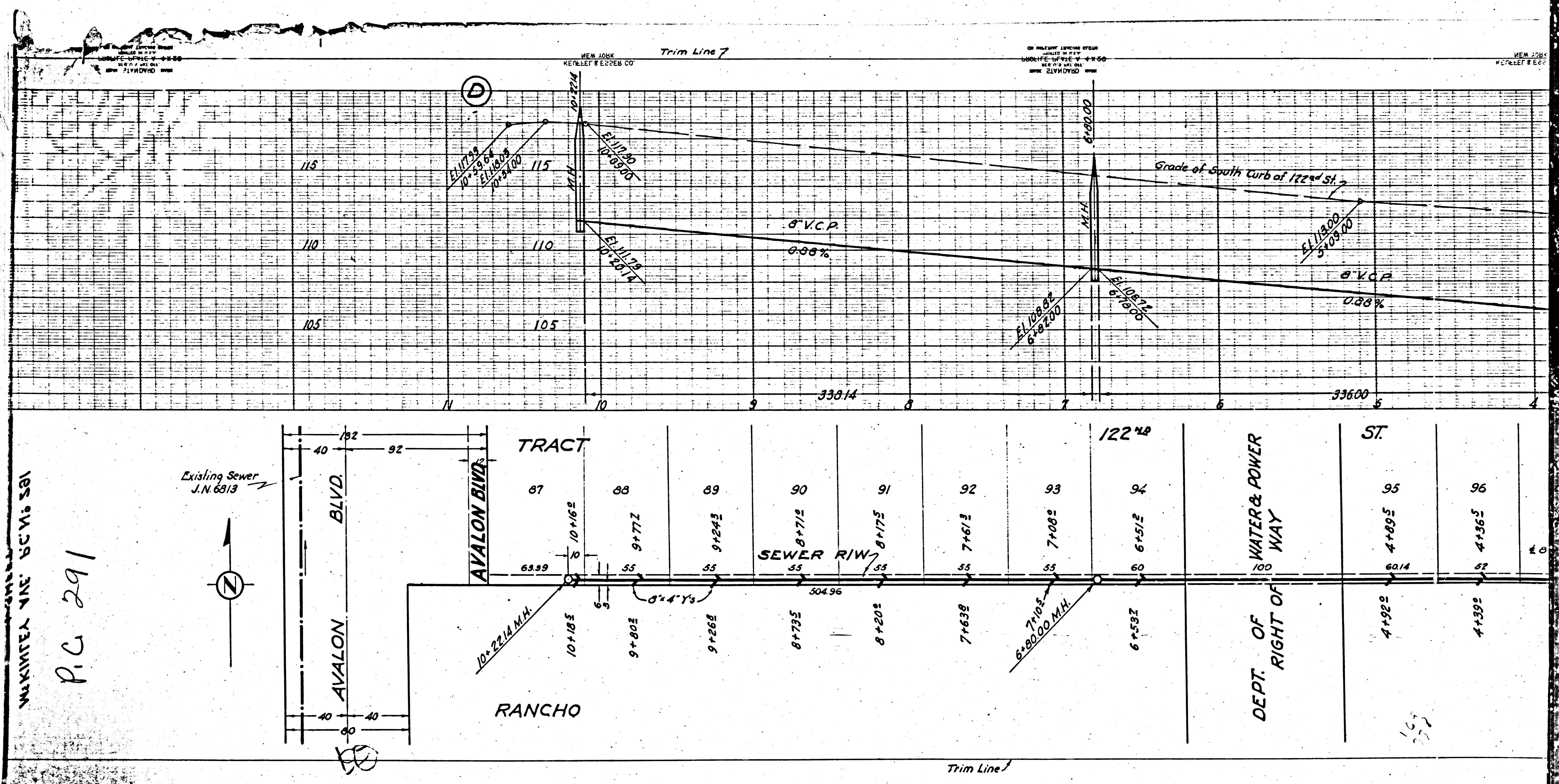
NEW YORK KENNEL & LEPPER CO. ENGINEERS



DEPT. OF WATER & POWER
OF WAY

DEPT. OF RIGHT

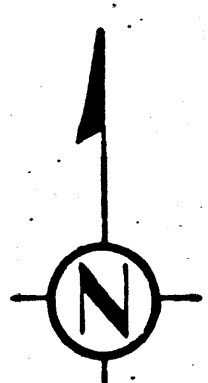
60



P.C. 291

MARKING THE 60' x 30'

Existing Sewer J.N. 6313



Trim Line