

County BM C-185 Elev. 88.820
 Spk. in top of Cb. 14' N. of N.E. Ret.
 122nd St. E. S. of C.B. on E. Side Wilmington Ave
 per C.S. P.B. 701 pg. 198

1. USE "JUST-RITE" MANHOLE FRAMES AND COVERS, EXCEPT AS NOTED.
2. USE STANDARD STRENGTH PIPE.
3. USE CEMENT MORTAR FOR VITRIFIED CLAY PIPE JOINTS.
4. RESURFACE ALL TRENCH WITHIN PAVED AREA TO MEET LOS ANGELES COUNTY ROAD DEPT. REQUIREMENTS.
5. CONSTRUCT HOUSE CONNECTIONS WITH INVERTS AT PROPERTY LINE.
6. ENCASE FOUR FEET OF SEWER AT POINTS OF INTERFERENCE WITH POLES AS PER S.O.S.
7. ALL STRUCTURES SHALL BE BRICK SEWER STRUCTURES 3' x 4'.
8. CONSTRUCT TOPS OF ALL STRUCTURES IN RIGHTS OF WAY 6" ABOVE FINISHED GRADE.
9. DELIVER ALL METAL APPURTENANCES TO L.A. COUNTY SEWER MAINTENANCE YARD.

PROFILE, ALIGNMENT AND
SANITARY SEWER
 TO BE CONSTRUCTED
SANITARY SEWER RIG
 IN LOT 25 TRACT NO. 13
 123RD ST.
 BETWEEN WILMINGTON AVE AND
 122ND ST.
 BETWEEN BANDERA AVE AND

DEFIANCE A BANDERA AV
 BETWEEN 122ND ST AND 123RD
PRIVATE CONTRACT
 W.S. 26
 SHEET 1 OF 2 SHEETS
 PREPARED IN THE OFFICE

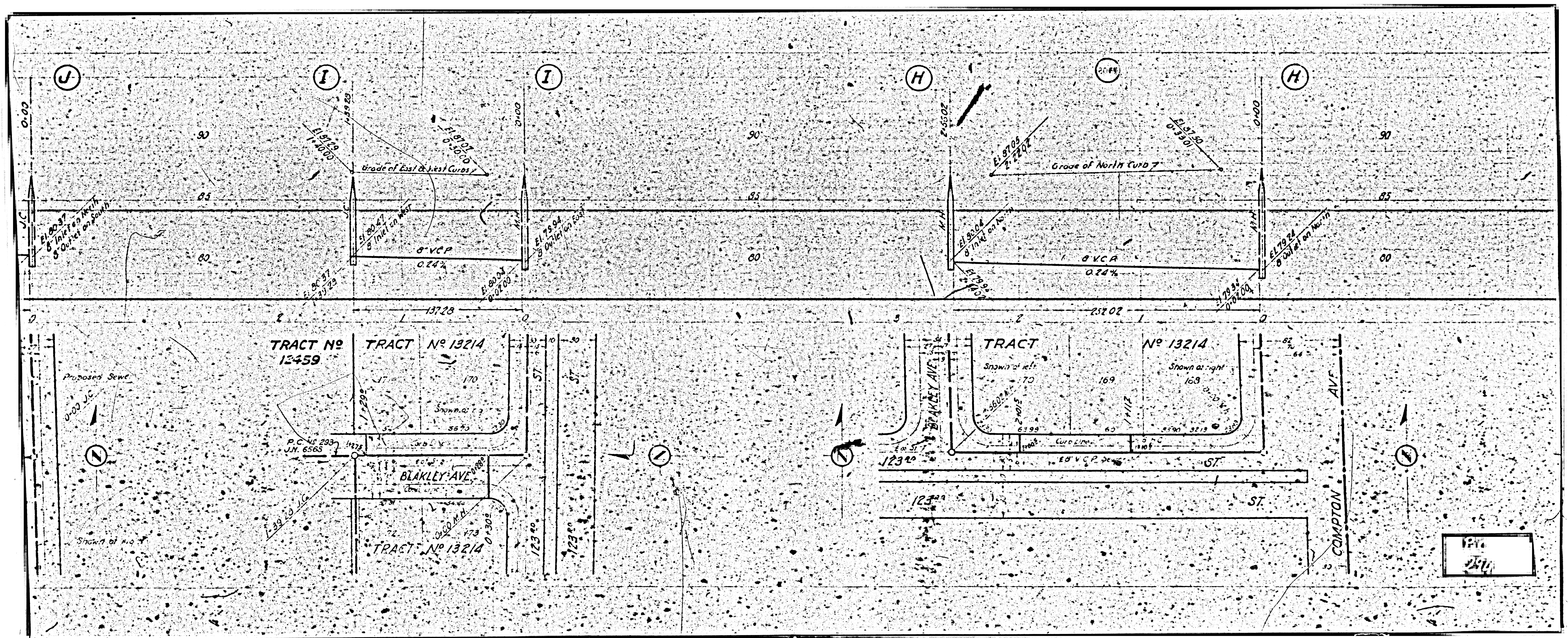
SEABOARD ENGINEERS
Mark J. P. ...
 REG. C.E.N.
 FOR LEGEND
 SEE PLAN NO. 5006

NOTE:
 GRADES TO WHICH THIS IMPROVEMENT IS TO BE CONSTRUCTED
 GRADE POINTS FOR TOP OF CURB, CENTER LINE OF STREET, OR
 CIRCLES ON PROFILES, AT ALL POINTS BETWEEN DESIGNATED POINTS
 SO AS TO CONFORM TO A STRAIGHT LINE DRAWN BETWEEN SAID
 ELEVATIONS ARE IN FEET ABOVE CURB, DATUM OR MEAN SEA
 THIS DRAWING AND THE DATA HEREON ARE HEREBY MADE A
 WORK SHALL BE CONSTRUCTED ACCORDING TO SPECIFICATION
 COUNTY ENGINEER, AND SHALL BE PROTECTED ONLY IN THE CITY
 BEFORE WORK CAN BE STARTED. THE CONTRACTOR MUST
 COUNTY STREETS, FROM THE L.A. COUNTY ROAD DIST. 112-4
 DEPOSIT WITH THE COUNTY ENGINEER, 700 UNION LEAGUE BLDG.,
 DIST. OF CONSTRUCTION INSPECTION AND RECORD PLANS.

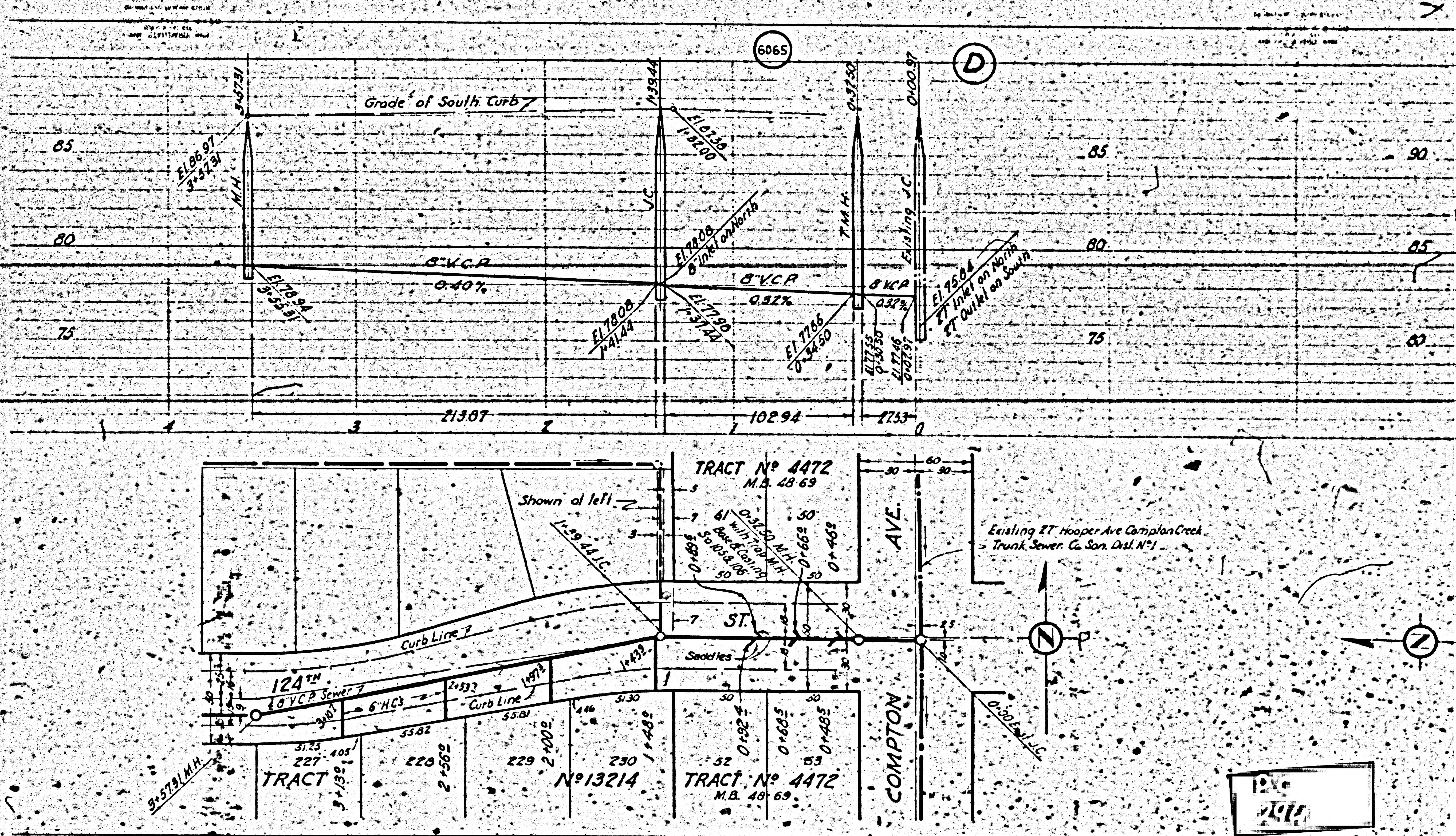
COUNTY OF LOS ANGELES

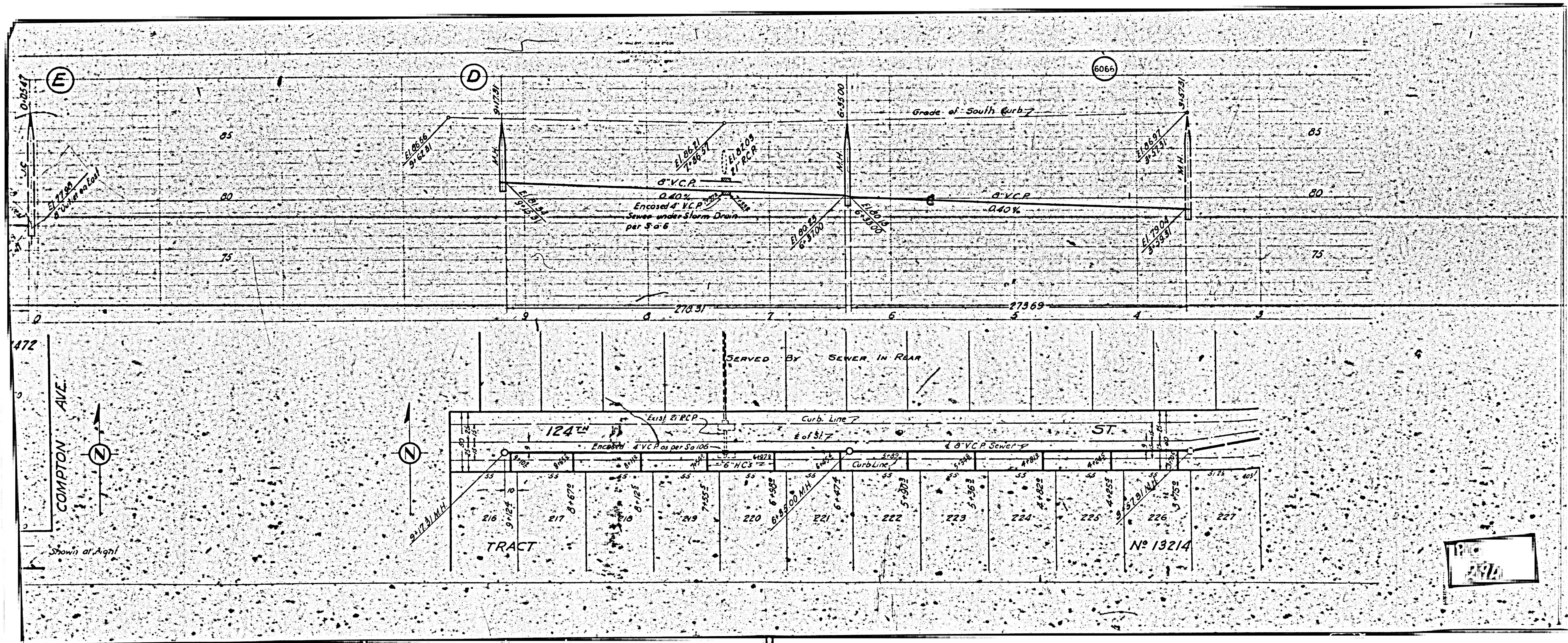
APPROVE
 APPROVE
 CHECKED BY *[Signature]*
 OFFICE

112
 2 11



124
 254





(E)

(D)

6066

Grade of South Curb 7

0.40%
Encased 4" V.C.P.
Sewer under Storm Drain
per S-6

0.40%
V.C.P.

SERVED BY SEWER IN REAR

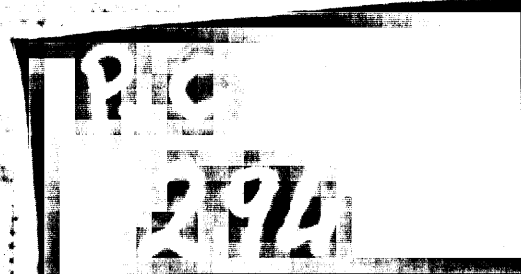
124TH

ST.

TRACT

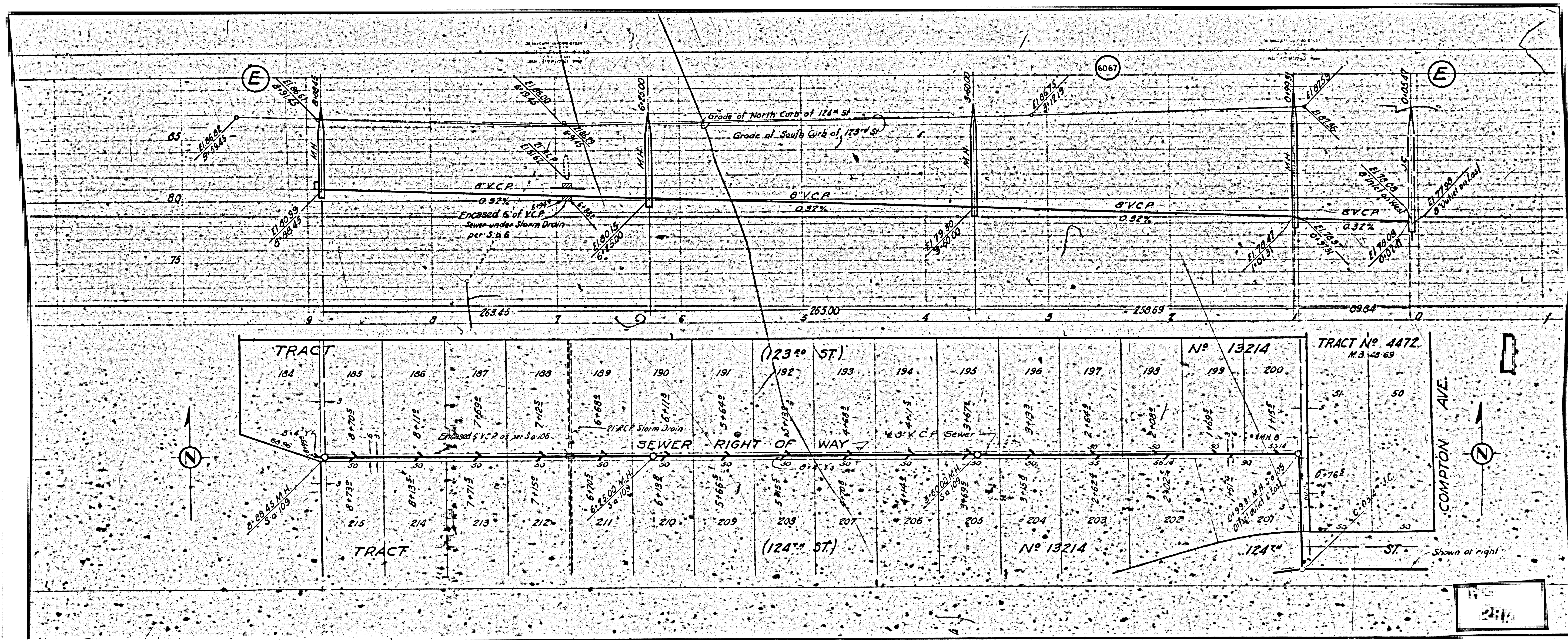
N^o 13214

COMPTON AVE.



472

Shown at Right



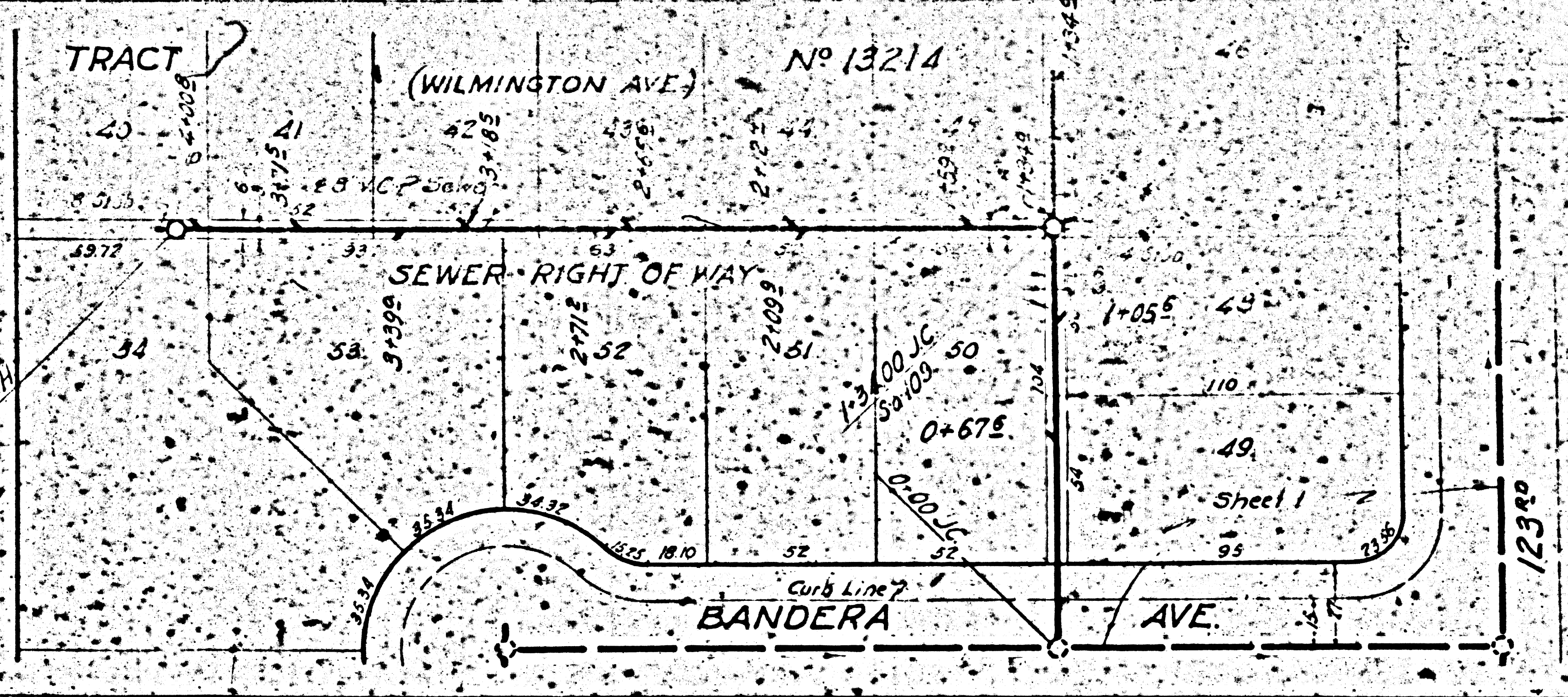
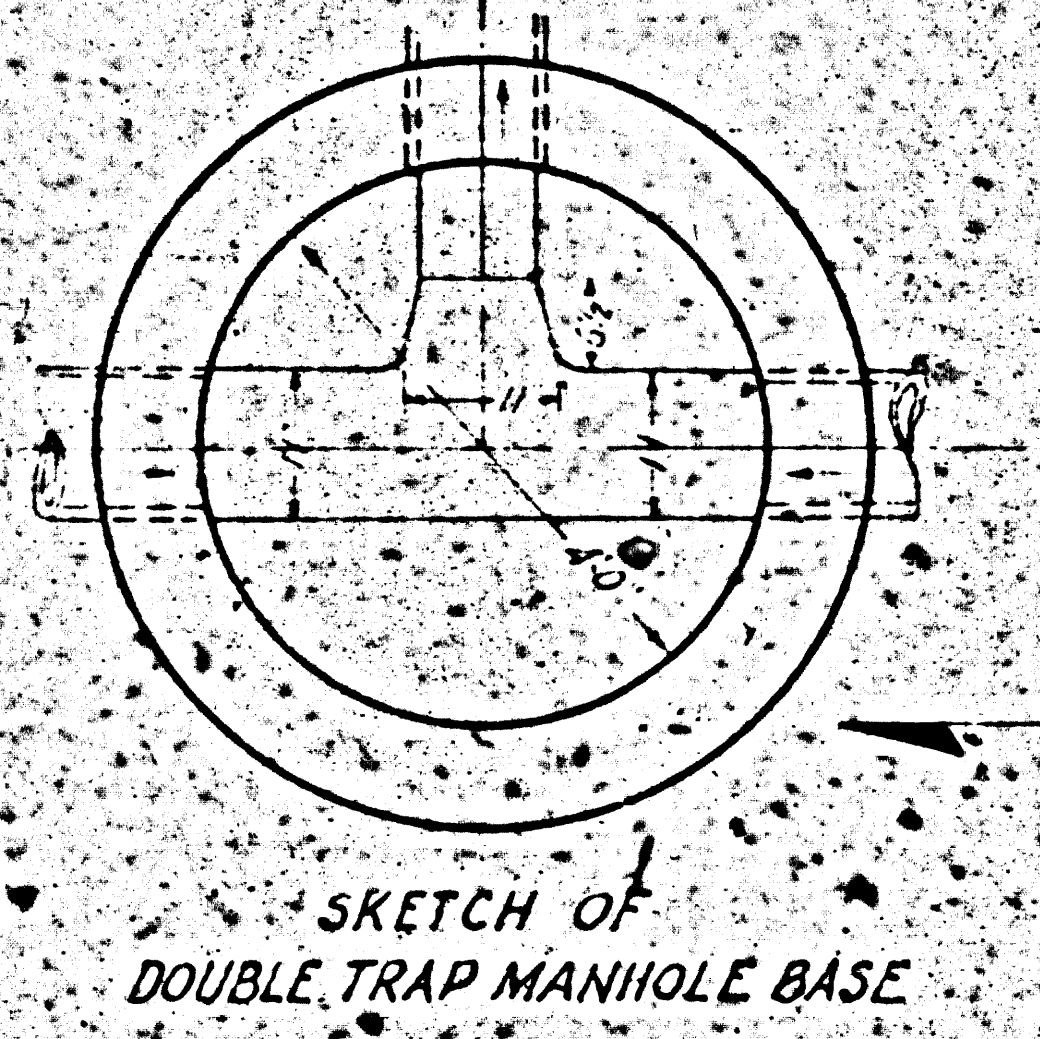
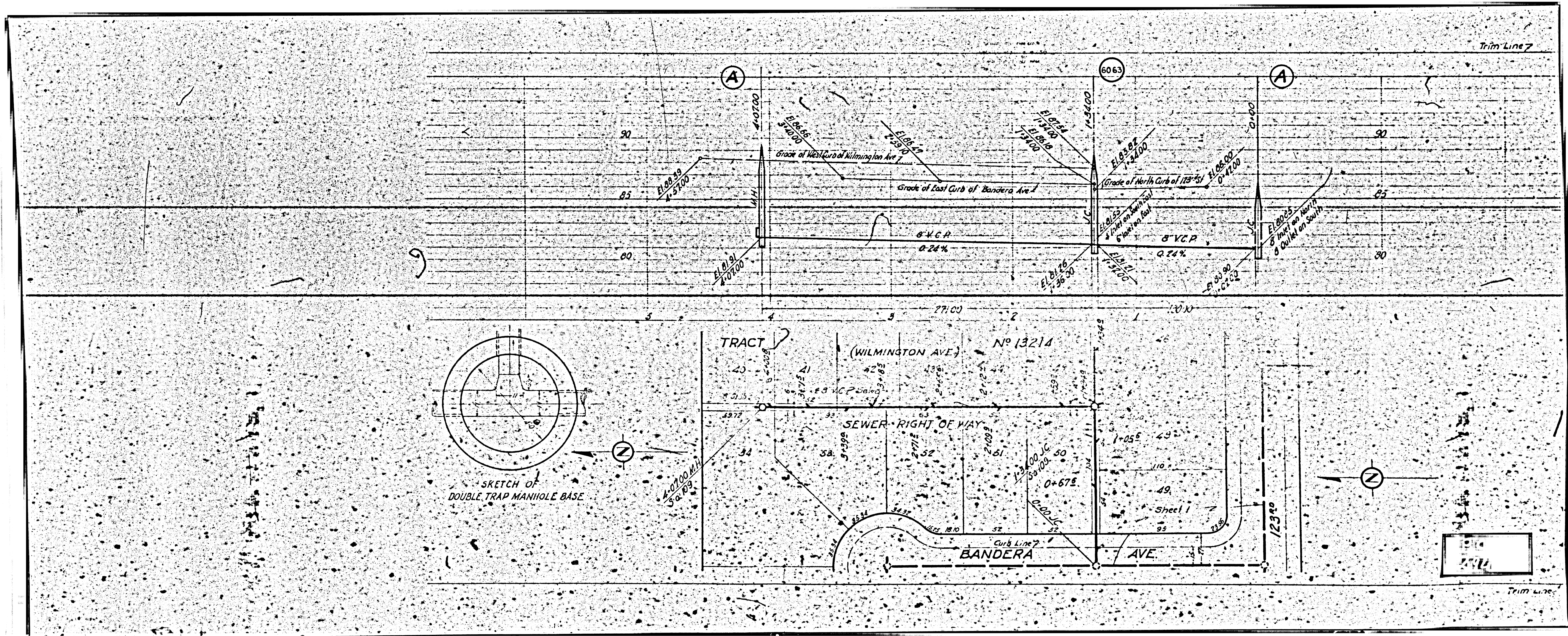
TRACT	184	185	186	187	188	189	190	191	192	193	194	195	196	197	198	199	200
	50	50	50	50	50	50	50	50	50	50	50	50	50	50	50	50	50
	50	50	50	50	50	50	50	50	50	50	50	50	50	50	50	50	50
	50	50	50	50	50	50	50	50	50	50	50	50	50	50	50	50	50

TRACT No 4472
M.B. 23 69

COMPTON AVE.

Shown at right

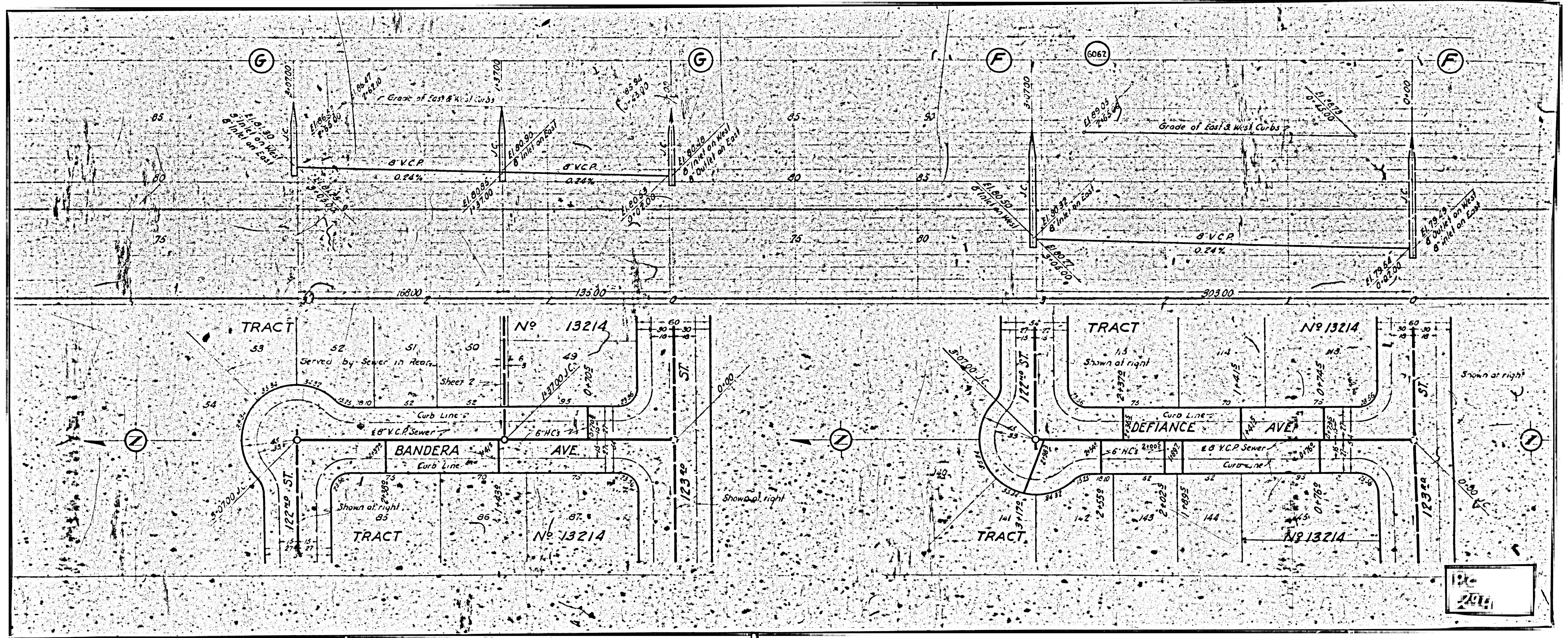
211



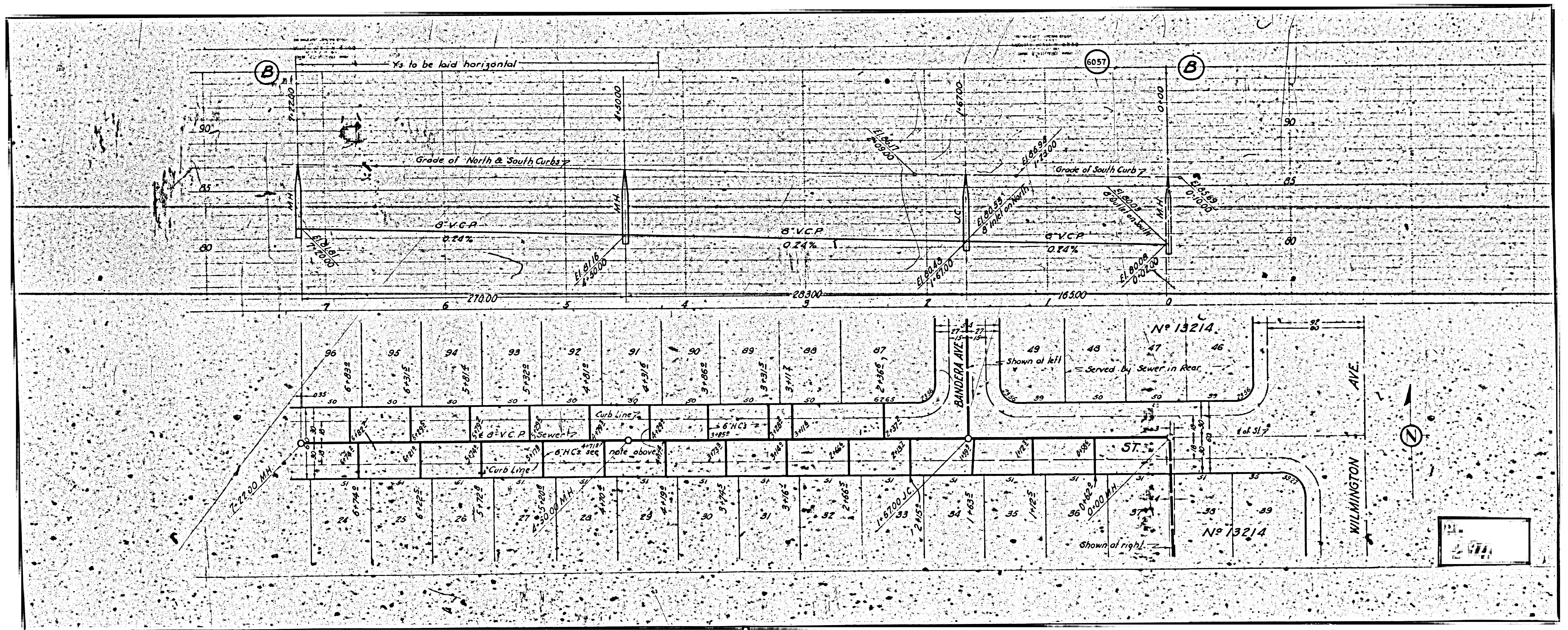
Sheet 1

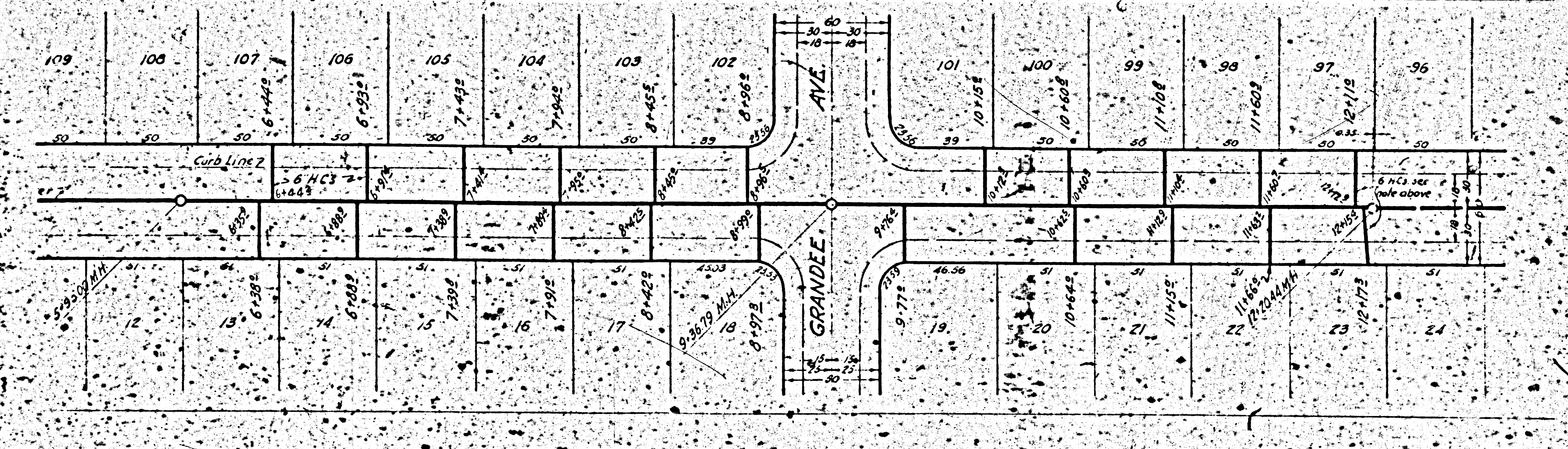
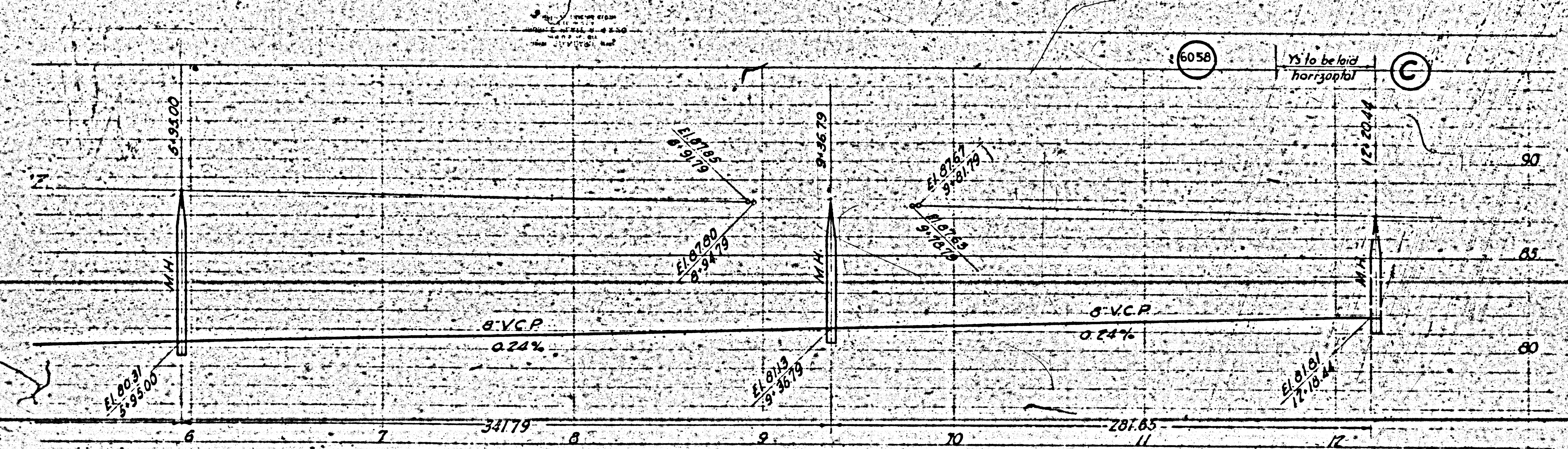
Trim Line 7

Trim Line 7

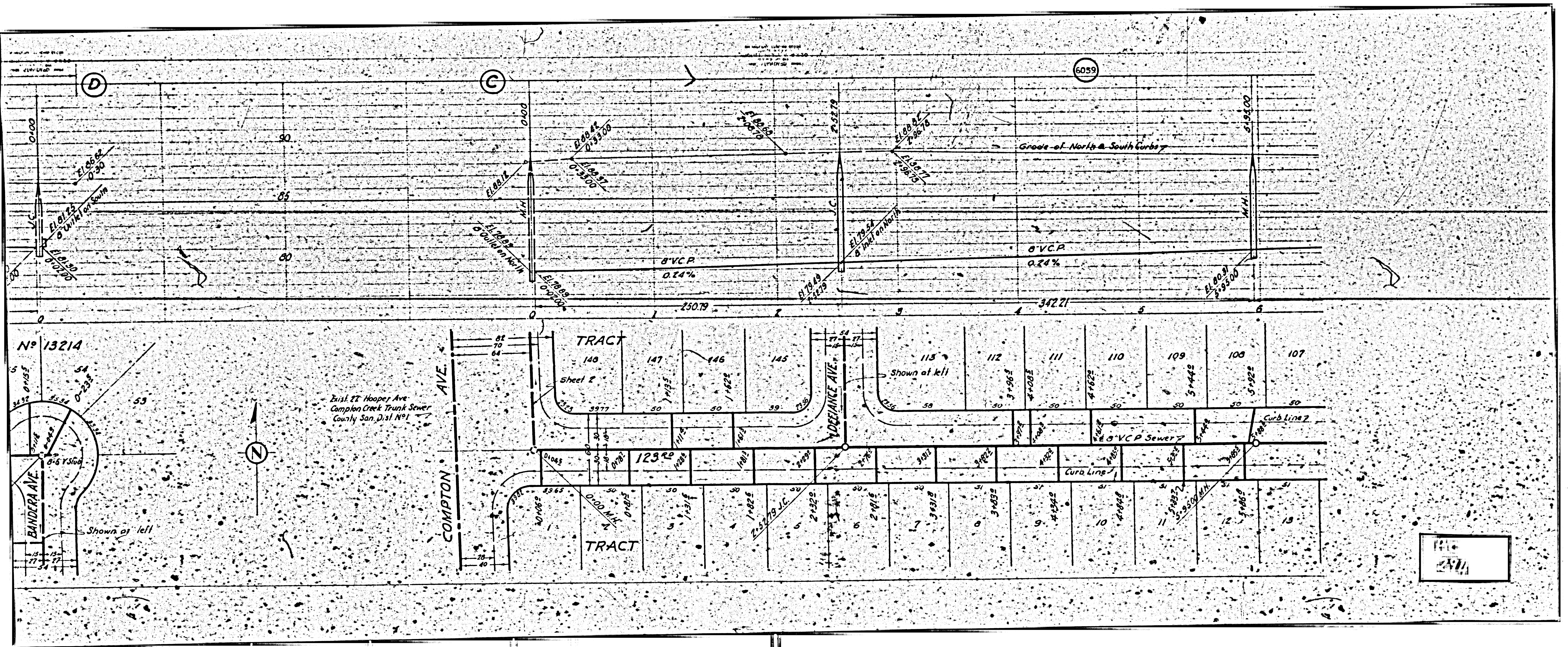


124
2014



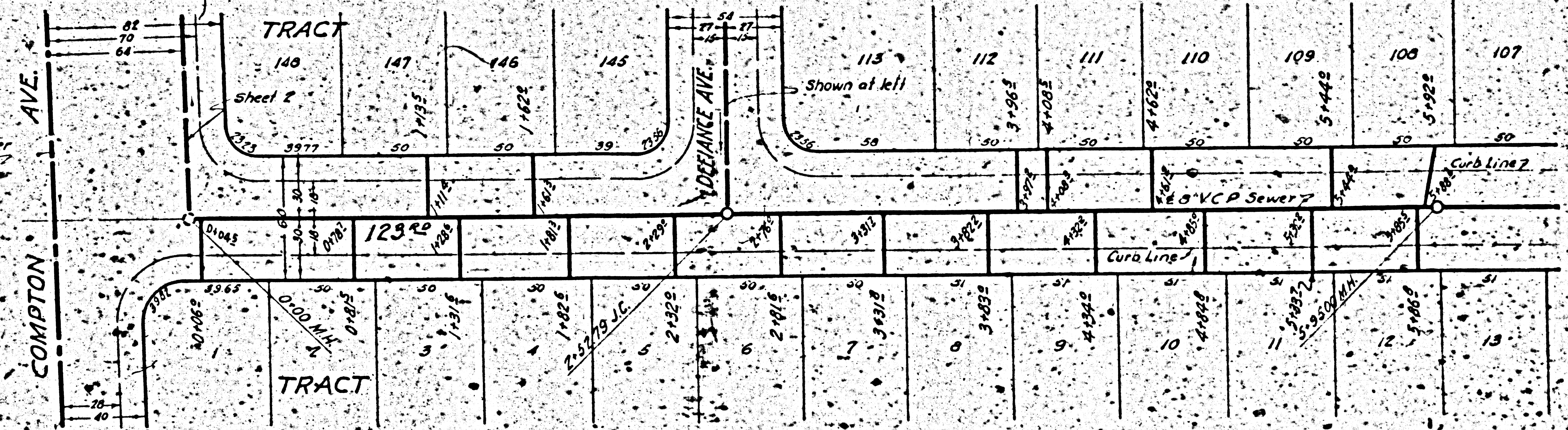


10
 24
 11

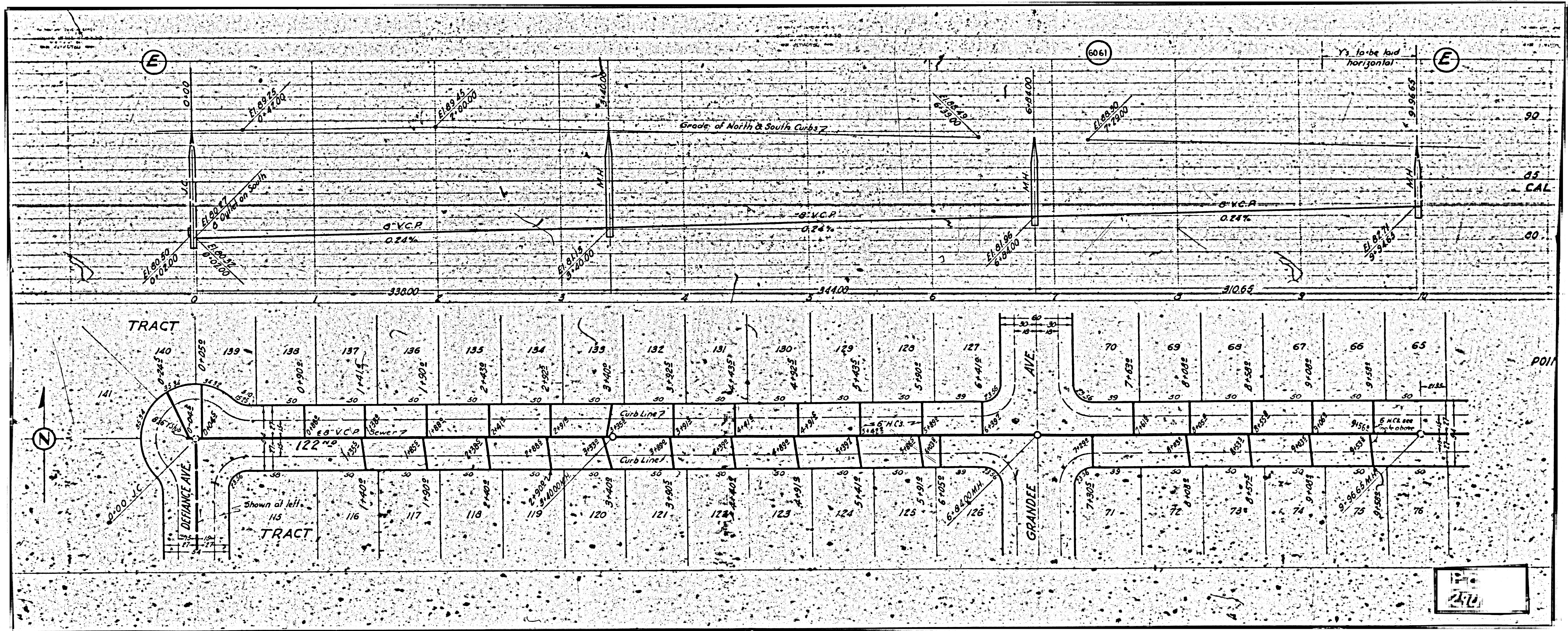


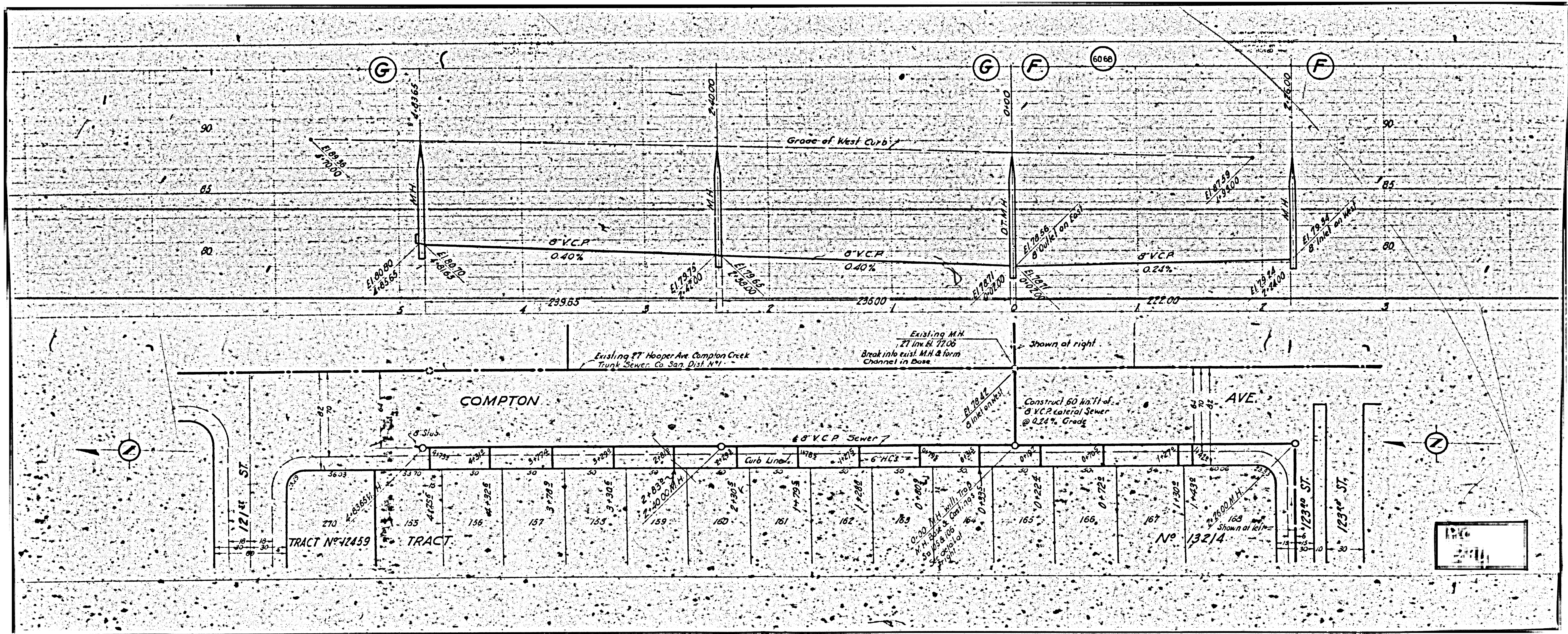
No 13214

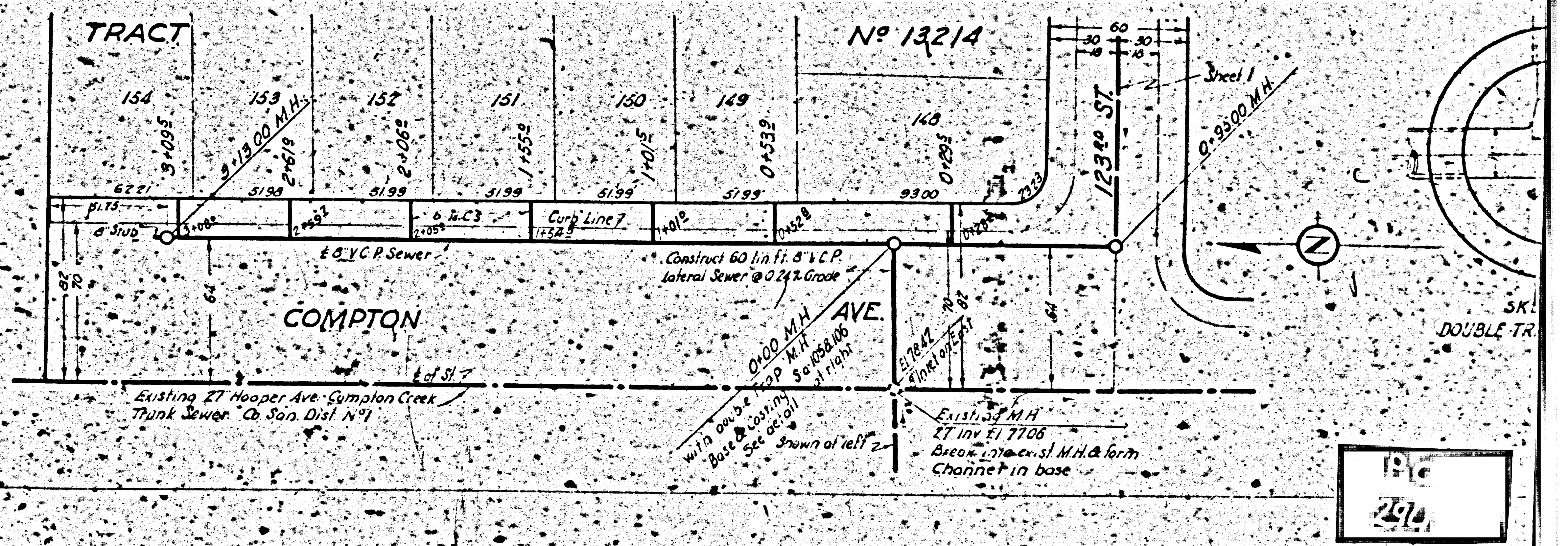
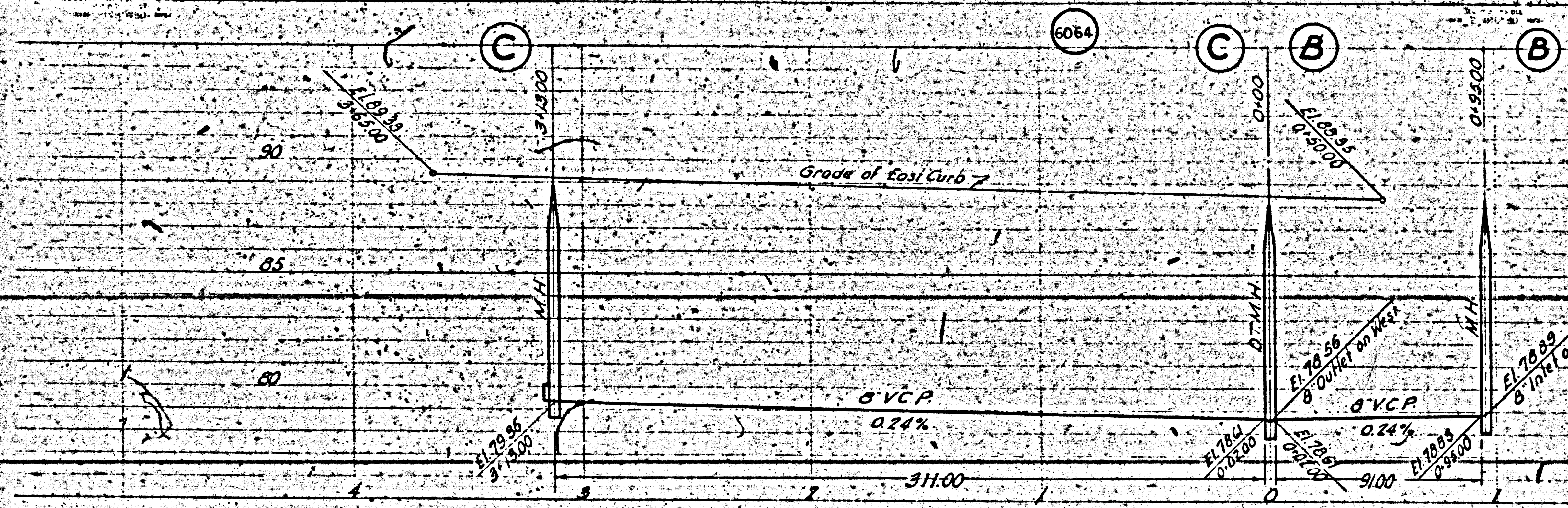
Dist. 27 Hooper Ave
Compton Creek Trunk Sewer
County San. Dist. No 1



114
2511







1916
2514