

B.M. - BOLT IN PAVEMENT AT INTERSECTION OF C.A. & 120TH ST. E.L. = 93.70

**NOTE:**  
 USE STANDARD STRENGTH PIPE EXCEPT AS NOTED.  
 USE CEMENT MORTAR FOR ALL PIPE JOINTS.  
 ENCASE 4 FEET OF SEWER AT POINTS OF INTERFERENCE WITH POLES AS PER PLAN NO. S-376.  
 ALL STRUCTURES SHALL BE CONSTRUCTED AS PER PLAN NO. S-404 EXCEPT AS NOTED.  
 USE "JUST RIGHT" OR "D & D" SAFETY AND NOISELESS MANHOLE FRAMES AND COVERS.  
 CONSTRUCT HOUSE CONNECTIONS WITH INVERT AT PROPERTY LINE 4' BELOW CURB GRADE EXCEPT AS NOTED.

WITHIN THE CITY OF LOS ANGELES:  
 BUILDING BRICK SHALL CONFORM TO THE REQUIREMENTS OF SECTION 42(d) OF SPECIFICATIONS No. 138 EXCEPT THAT STANDARD SPECIFICATION C62-41T SHALL BE SUBSTITUTED FOR STANDARD SPECIFICATIONS C62-40T AND THAT FREEZING AND THAWING TESTS AND TESTS FOR ABSORPTION AND SATURATION COEFFICIENT WILL NOT BE REQUIRED.  
 USE MANHOLE FRAME AND COVER SETS IN ACCORDANCE WITH PLAN NO. S-256Z.

**SPECIFICATIONS:**  
 ALL WORK DETAILED ON THESE PLANS SHALL BE CONSTRUCTED IN ACCORDANCE WITH SPECIFICATIONS No. 138 INCLUDING ALL AMENDMENTS WHICH WERE ADOPTED PRIOR TO THE DATE OF APPROVAL OF THESE PLANS.

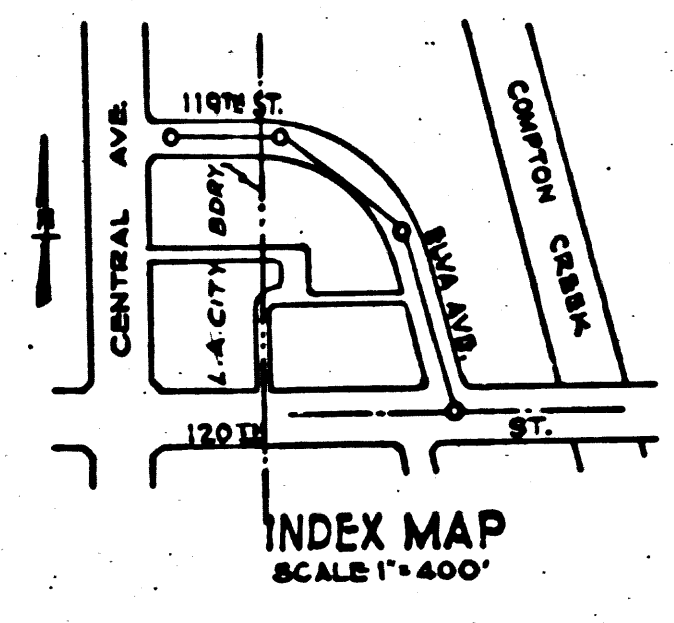
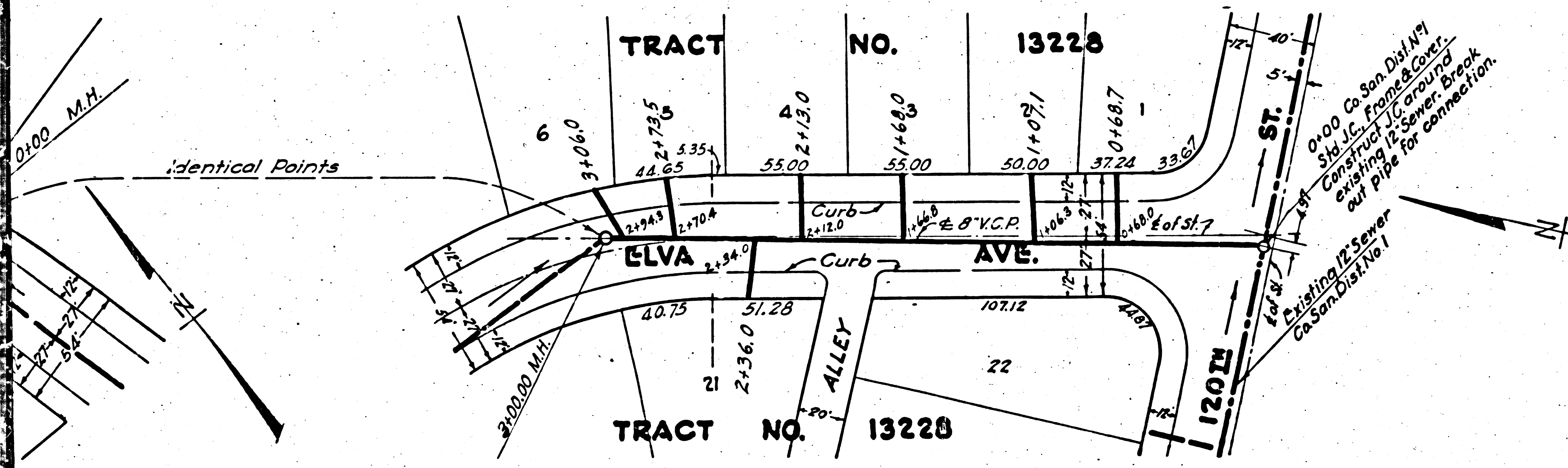
PROFILE ALIGNMENT AND GRADE OF  
**SANITARY SEWERS**  
 TO BE CONSTRUCTED IN  
**119TH ST. & ELVA AVE.**  
 BETWEEN CENTRAL AVE. & 120TH ST.  
**TRACT NO. 13228**

**PRIVATE CONTRACT NO. 299**  
 W.S. 78

SHEET 1 OF 1 SHEET

SCALE: VERT. 1" = 4'  
 HORIZ. 1" = 40'  
 PREPARED IN THE OFFICES OF  
**ADAMS AND ELLS** ENGINEER

BY *J. Adams*  
 REG. C.E. NO. 617  
 FOR LEGEND  
 SEE PLAN No. S-376-4



WORK ACCEPTED & COMPLETED	DATE	UNDER
CITY ENGINEER		
SD OF PUBLIC WORKS		
STREET MAINTENANCE		
SEWER STOP		
CONSTRUCTION CHANGES RECORDED		BY

SUBMITTED *May 12* 1925  
 BY *W. Adams*  
 ENGINEER OF PUBLIC WORKS  
 DEPUTY ENGINEER (DESIGN)  
 APPROVED *May 10, 1925*  
*W. Adams*  
 CITY ENGINEER  
 A.R.D. 5-10-25 J.E.G.

**NOTE:**  
 GRADES TO WHICH THIS IMPROVEMENT IS TO BE CONSTRUCTED ARE SHOWN ON PLAN GRADE POINTS FOR TOP OF CURB OR CENTER LINE OF STREET ARE SHOWN BY CIRCLES ON AT ALL POINTS BETWEEN DESIGNATED POINTS THE GRADE SHALL BE ESTABLISHED BY A STRAIGHT LINE DRAWN BETWEEN SAID DESIGNATED POINTS.  
 ELEVATIONS ARE IN FEET ABOVE U.S.C. DATUM OR MEAN SEA LEVEL.  
 THIS DRAWING AND THE DATA HEREON ARE HEREBY MADE A PART OF THE SPECIFICATION WORK SHALL BE CONSTRUCTED ACCORDING TO SPECIFICATIONS ON FILE IN THE COUNTY ENGINEER'S OFFICE.  
 BEFORE WORK CAN BE STARTED, THE CONTRACTOR MUST OBTAIN A PERMIT FROM THE COUNTY ENGINEER, 700 UNION LEAGUE BUILDING, SUPPLEMENT TO COVER CONSTRUCTION INSPECTION AND RECORD PLANS.  
 IF WORK IS TO BE DONE IN A STATE HIGHWAY A PERMIT MUST BE OBTAINED FROM THE DIVISION OF HIGHWAYS, 505 STATE BUILDING, AFTER MAKING THE DEPOSIT WITH THE COUNTY ENGINEER.

**COUNTY OF LOS ANGELES - CALIFORNIA**

APPROVED *Alfred Jones*  
 COUNTY ENGINEER

APPROVED *C. R. Conston*  
 ACTING CHIEF ENGINEER OF COUNTY SANITATION DIST. NO. 1

CHECKED BY *William H. Kellum*  
 OFFICE OF COUNTY ENGINEER REG. C.E.

**119TH STREET AND CENTRAL AVENUE I.D.**  
 PERMIT NO. B-3130.

Final C&T.P. 10/10/25

