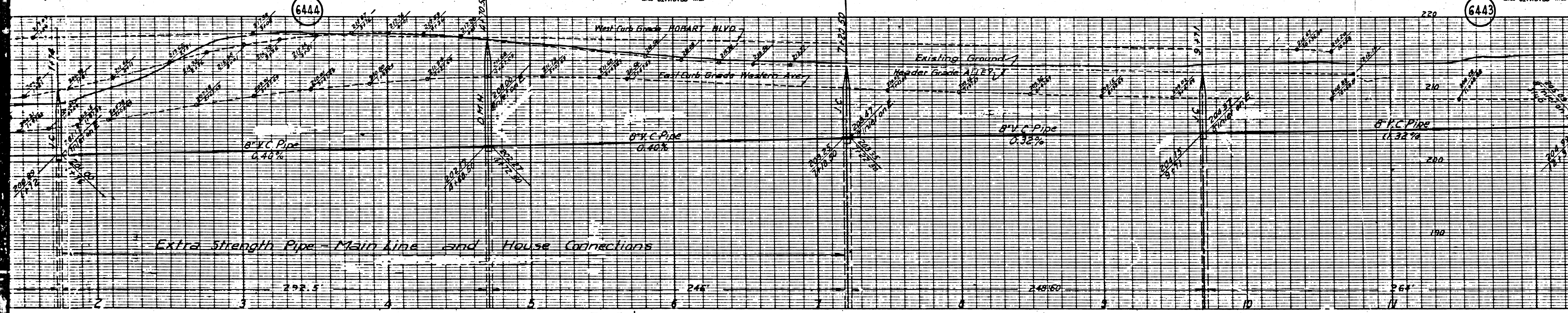


NEW YORK KENNEL & EPSTEIN CO. ENGINEERS



ELEV. 205.850  
 WESTERN AVE. 16' 10 1/2" ST.  
 LEAD & TACK CENTER CURB RETURN N.W. COR.

(1) LINE CURB, INTERSECTIONS, FRAMES AND COVERS.  
 (2) USE STANDARD STRENGTH PIPE EXCEPT AS NOTED.  
 (3) PROTECT ALL TRENCH WITHIN PAVED AREAS TO MEET  
 LOS ANGELES COUNTY ROAD DEPT. REQUIREMENTS.  
 (4) VERIFY ALL HOUSE CONNECTIONS AS PER STANDARD SPECIFI-  
 CATIONS WITH INVERT AT PROPERTY LINE TO ELEVATIONS  
 SHOWN ON THE PLANS.  
 (5) ENCASE FOUR FEET OF SEWER AT POINTS OF INTERSE-  
 CTION WITH PILES AT PER. PLAN NO. S-1016.  
 (6) USE CEMENT MORTAR FOR ALL V.C.P. JOINTS.

**SANITARY SEWER**  
**ALLEY WEST OF HOBART**  
 BETWEEN HOBART ST. AND 110TH ST.  
**SANITARY SEWER RIGHTS**  
 IN TRACT NO. 13361, M.B.  
 AND IN THE S.W. 1/4 OF SECTION 1, T. 5-S, R. 14-W, S. 21-B & M.

DOUBLE SCALE

PRIVATE CONTRACT NO. 318  
 W.S. 27  
 SHEET 1 OF 1 SHEET

SCALE: HORIZ. 1" = 40'

PREPARED IN THE OFFICES OF

HAROLD M. TEGART

BY: *Harold M. Tegart*  
 REG. C.E. NO. 175

FOR LEGEND

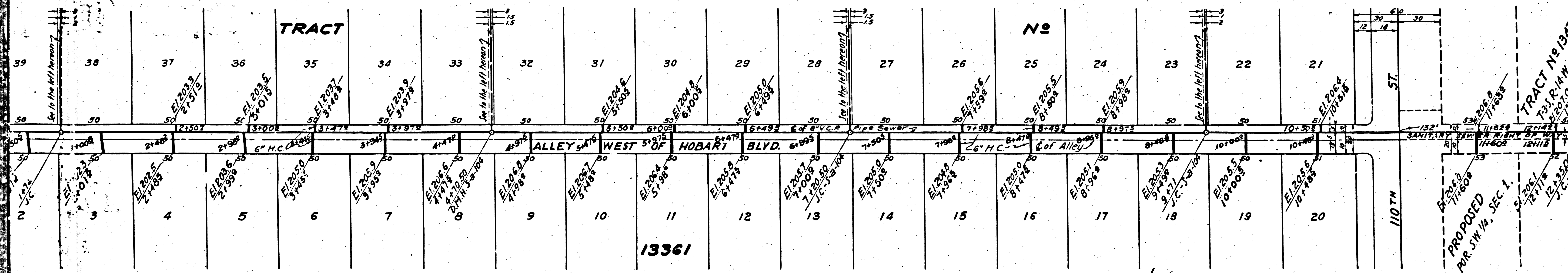
NOTE:  
 GRADES TO WHICH THIS IMPROVEMENT IS TO BE CONSTRUCTED ARE SHOWN ON PLANS AND PRO-  
 GRADE POINTS FOR TOP OF CURB, CENTER LINE OF STREET OR CENTER LINE OF ALLEY ARE SHOWN  
 CIRCLES ON PROFILES. AT ALL POINTS BETWEEN DESIGNATED POINTS THE GRADE SHALL BE ESTAB-  
 LISHED TO CONFORM TO A STRAIGHT LINE DRAWN BETWEEN SAID DESIGNATED POINTS.  
 ELEVATIONS ARE IN FEET ABOVE U.S. DATUM OR MEAN SEA LEVEL.  
 THIS DRAWING AND THE DATA HEREON ARE HEREBY MADE A PART OF THE SPECIFICATIONS.  
 WORK SHALL BE CONSTRUCTED ACCORDING TO SPECIFICATIONS ON FILE IN THE OFFICE OF THE  
 COUNTY ENGINEER AND SHALL BE EXECUTED ONLY IN THE PRESENCE OF THE COUNTY ENGI-  
 NEER. BEFORE WORK CAN BE STARTED THE CONTRACTOR MUST OBTAIN A PERMIT TO EXCAVATE  
 COUNTY STREETS FROM THE L.A. COUNTY ROAD DEPT. 104 HALL OF RECORDS AND MAKE A  
 DEPOSIT WITH THE COUNTY ENGINEER, 700 UNION LEAGUE BUILDING, SUFFICIENT TO COVER  
 COST OF CONSTRUCTION INSPECTION AND RECORD PLANS.  
 IF WORK IS TO BE DONE IN A STATE HIGHWAY, A PERMIT MUST BE OBTAINED FROM THE STATE OF CALIF.  
 DIVISION OF HIGHWAYS, 800 STATE BUILDING, ARTS AND CRAFTS BUILDING, THE DEPT. WITH THE COUNTY ENGINEER.

COUNTY OF LOS ANGELES, CALIFORNIA

APPROVED *Alfred Jones* COUNTY ENGINEER

APPROVED *[Signature]* CHIEF ENGINEER OF COUNTY SANITATION DISTRICT NO. 8.

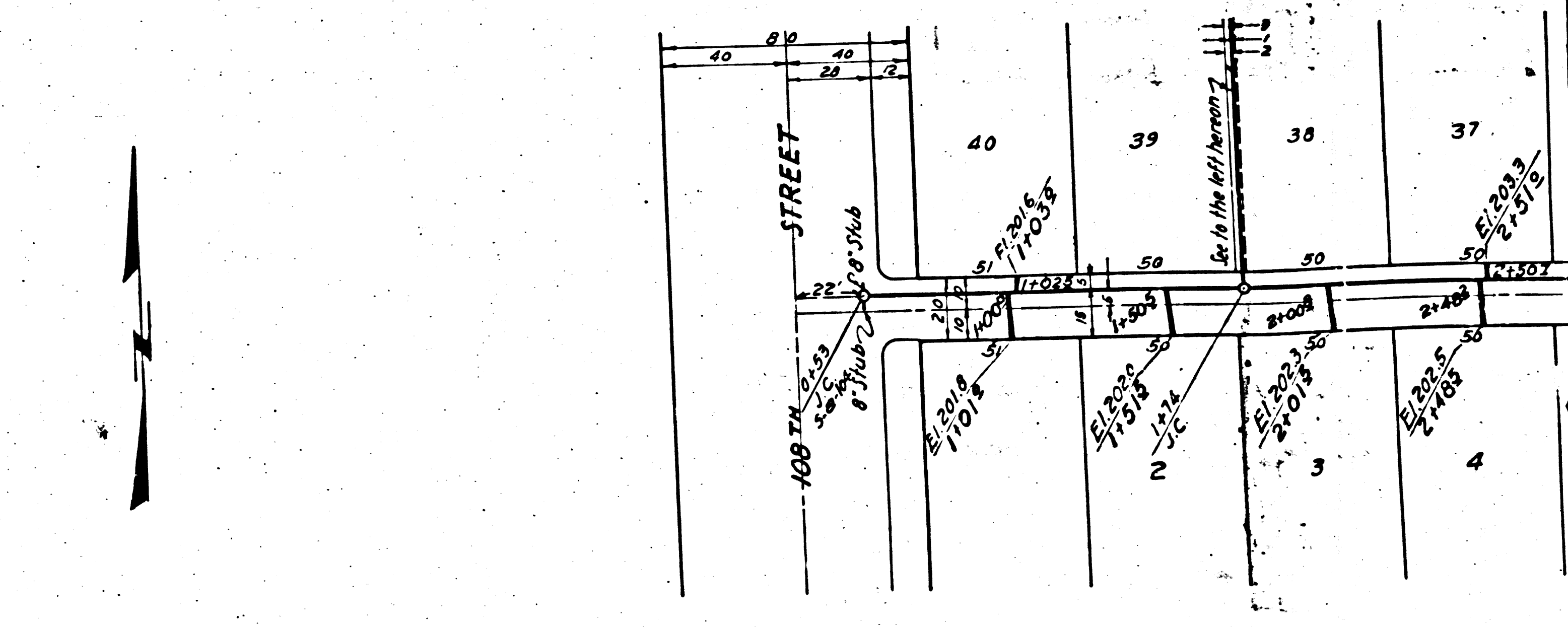
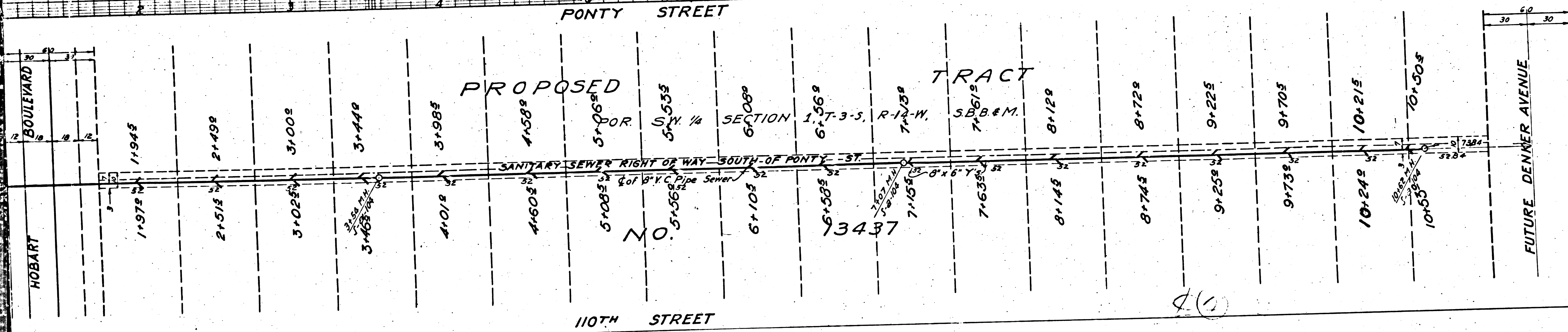
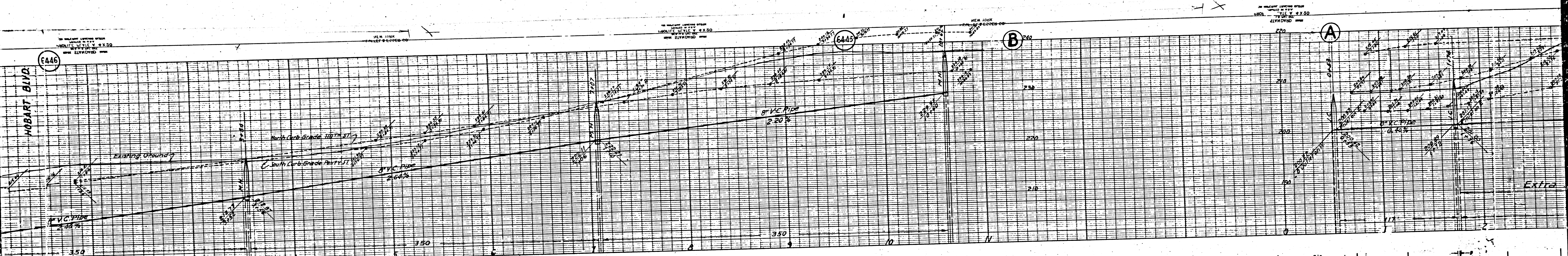
CHECKED BY *Arthur W. [Signature]* 117 OFFICE OF COUNTY ENGINEER REC'D



FINAL C&T.P. 4/10/46

RECEIVED OCT 8 1946





HOBART BLVD.

PONTY STREET

PROPOSED TRACT

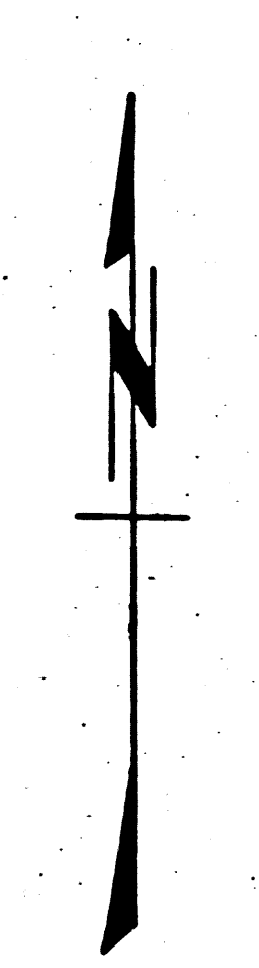
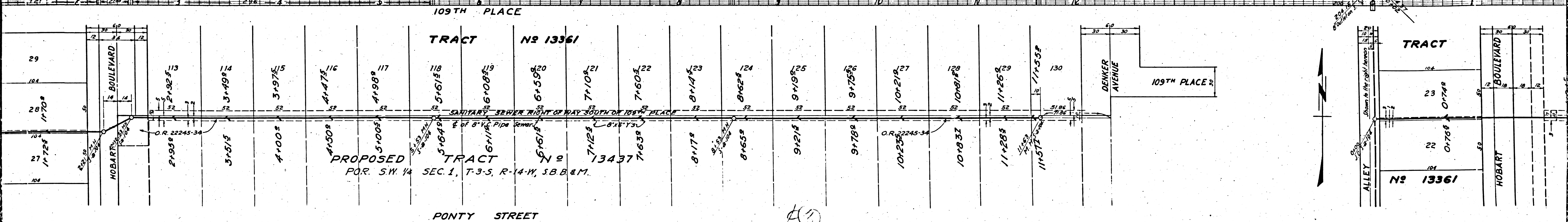
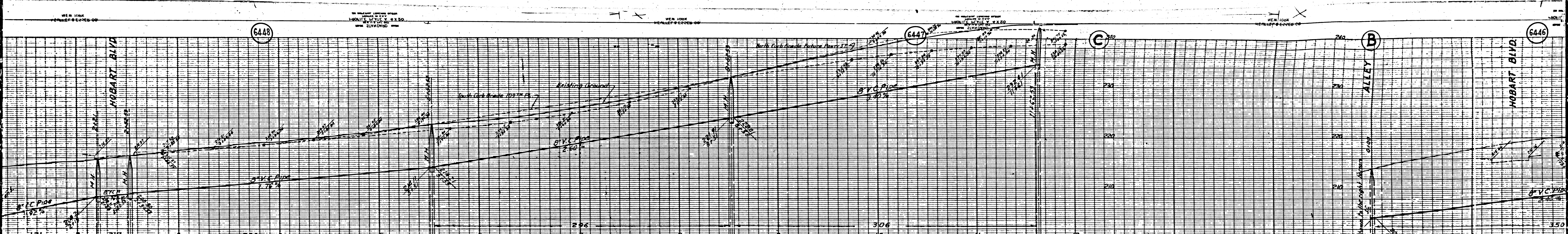
HOBART

110TH STREET

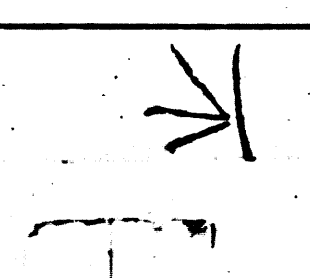
FUTURE DENNER AVENUE

HOBART STREET

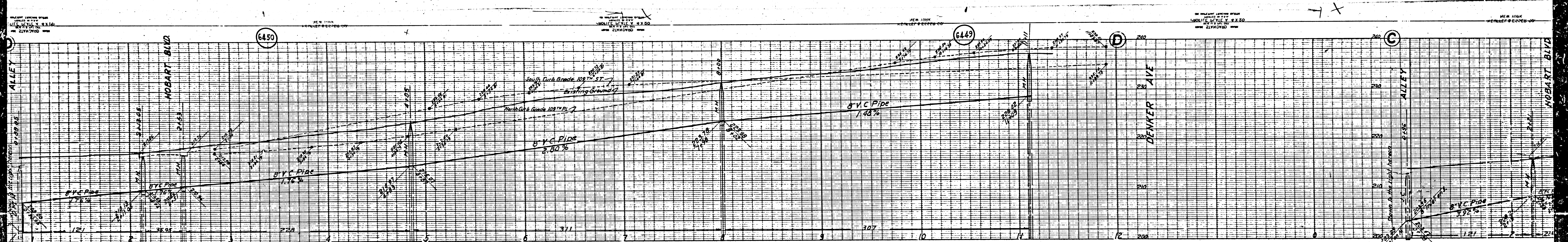




11

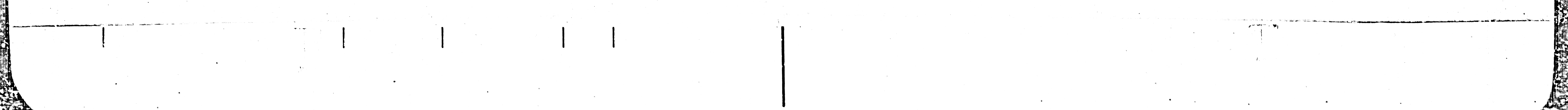




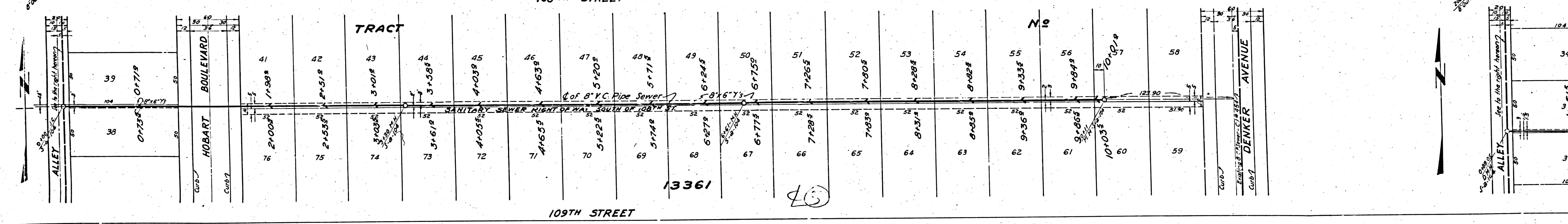
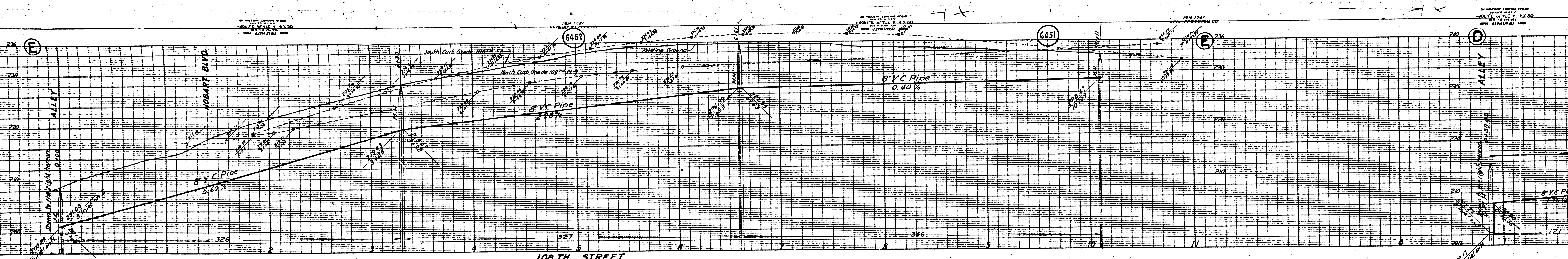


TRACT		No	
104	34	104	85
103	35	103	86
102	36	102	87
101	37	101	88
100	38	100	89
99	39	99	90
98	40	98	91
97	41	97	92
96	42	96	93
95	43	95	94

SANITARY SEWER RIGHT OF WAY SOUTH OF 109<sup>TH</sup> ST.  
 109<sup>TH</sup> PLACE  
 13361  
 24

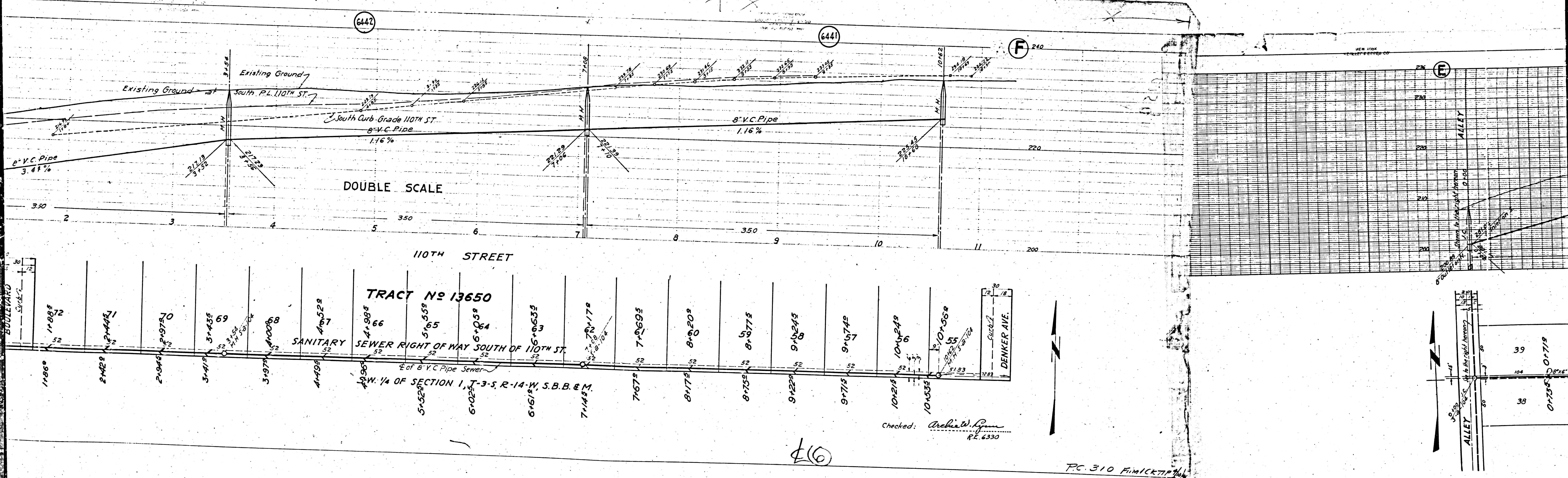






Station	Pipe Size	Notes
0+00	6" V.C. Pipe	0.40%
3+00	6" V.C. Pipe	0.40%
6+57	Manhole	
10+00	10" V.C. Pipe	0.28%
12+00	10" V.C. Pipe	0.28%





DOUBLE SCALE

110TH STREET

TRACT No 13650

SANITARY SEWER RIGHT OF WAY SOUTH OF 110TH ST.

W. 1/4 OF SECTION 1, T-3-S, R-14-W, S.B.B. & M.

Checked: Archie W. P.  
P.C. 310 FINICKTIP

P.C. 310 FINICKTIP

