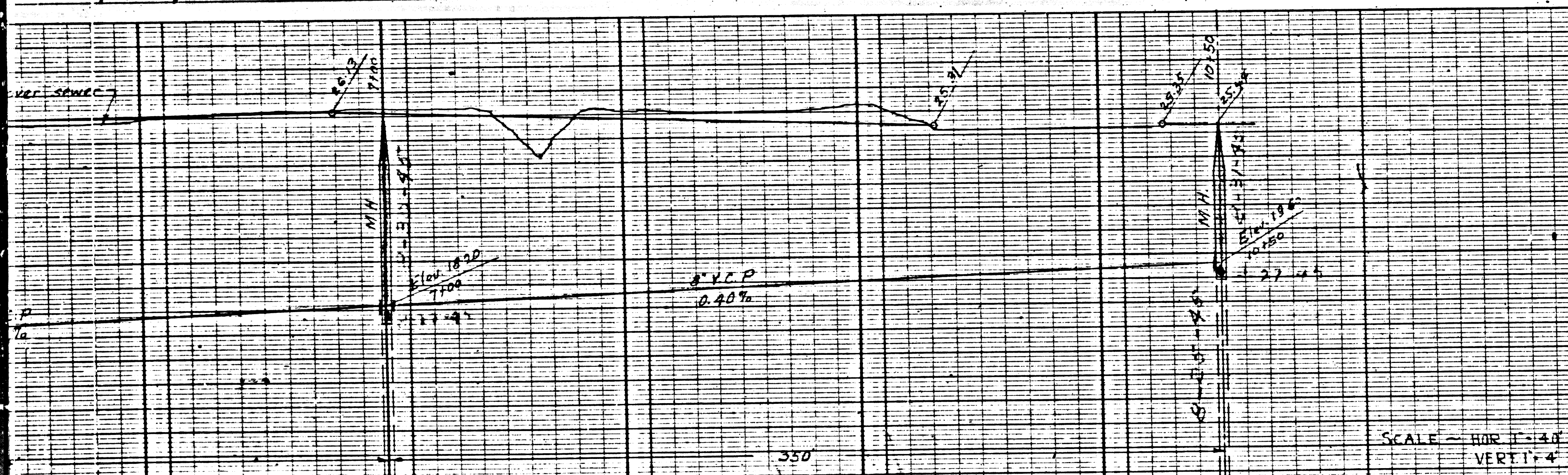


ML. E.M.C.'s Flooded 9-5-45
 NEW YORK KERRICK & EPPER CO.



USE JUST-RITE MANHOLE FRAMES AND COVERS
 USE STANDARD STRENGTH PIPE, EXCEPT AS NOTED.
 USE CEMENT MORTAR FOR ALL VITRIFIED CLAY PIPE JOINTS
 RESURFACE ALL TRENCH WITHIN PAVED AREA TO MEET LOS ANGELES COUNTY ROAD DEPT. REQUIREMENTS.
 CONSTRUCT HOUSE CONNECTIONS WITH INVERT AT PROPERTY LINE 4 FEET BELOW CURB GRADE.

PROFILE ALIGNMENT AND GRADE OF
SANITARY SEWERS
 TO BE CONSTRUCTED IN
220th STREET
 BETWEEN
Mc HELEN AVENUE
 AND
SALMON AVENUE
 AND
SALMON AVENUE
 BETWEEN
220th STREET
 AND
 269 feet Southeastly of 220th STREET

PREPARED IN THE OFFICE OF
SEABOARD ENGINEERING CO.

Mark A. Roblin
 REG. C.E. NO. 2059

PRIVATE CONTRACT NO. 313
 W. S. 30

FOR LEGEND
 SEE PLAN NO. S-2-64

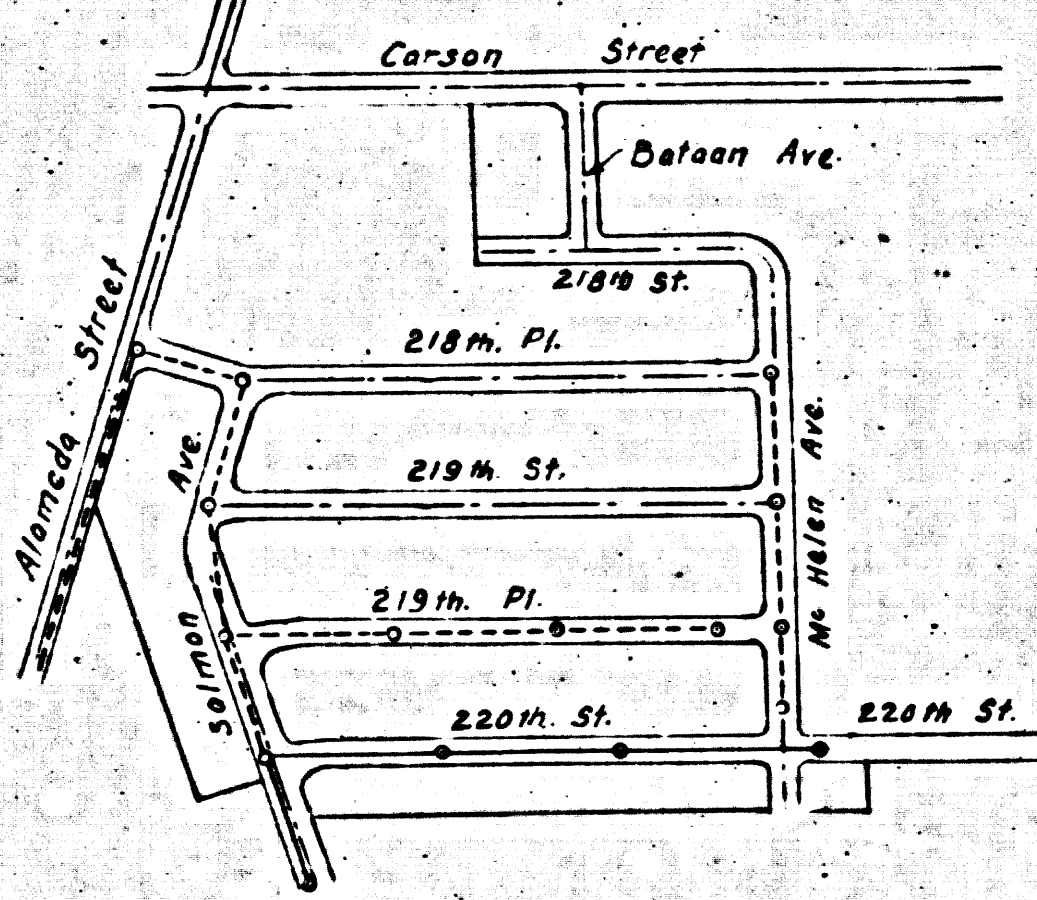
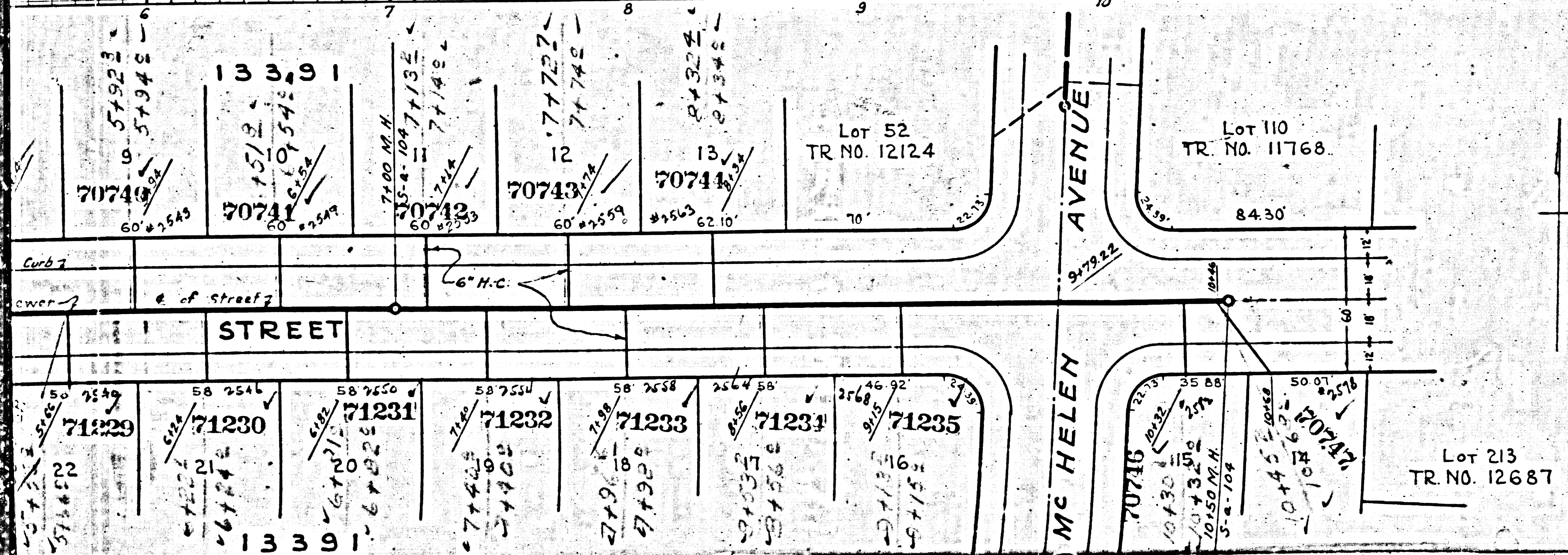
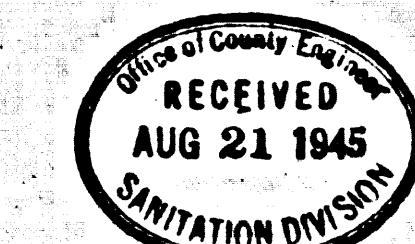
GRADES TO WHICH THIS IMPROVEMENT IS TO BE CONSTRUCTED ARE SHOWN ON PLANS AND PROFILE. GRADE POINTS FOR TOP OF CURB, CENTER LINE OF STREET OR CENTER LINE OF ALLEY ARE SHOWN BY CIRCLES ON PROFILES. AT ALL POINTS BETWEEN DESIGNATED POINTS THE GRADE SHALL BE ESTABLISHED SO AS TO CONFORM TO A STRAIGHT LINE DRAWN BETWEEN SAID DESIGNATED POINTS. ELEVATIONS ARE IN FEET ABOVE U.S.G.S. DATUM OR MEAN SEA LEVEL. THIS DRAWING AND THE DATA HEREON ARE HEREBY MADE A PART OF THE SPECIFICATIONS. THE WORK SHALL BE CONSTRUCTED ACCORDING TO SPECIFICATIONS ON FILE IN THE OFFICE OF THE COUNTY ENGINEER AND SHALL BE PROSECUTED ONLY IN THE PRESENCE OF THE COUNTY ENGINEER. BEFORE WORK CAN BE STARTED THE CONTRACTOR MUST OBTAIN A PERMIT TO EXCAVATE IN COUNTY STREETS FROM THE L.A. COUNTY ROAD DEPT. 1104 HALL OF RECORDS AND MAKE A DEPOSIT WITH THE COUNTY ENGINEER, 100 UNION LEAGUE BUILDING SUFFICIENT TO COVER THE COST OF CONSTRUCTION INSPECTION AND RECORD PLANS.

COUNTY OF LOS ANGELES, CALIFORNIA

APPROVED *Alfred Jones*
 COUNTY ENGINEER

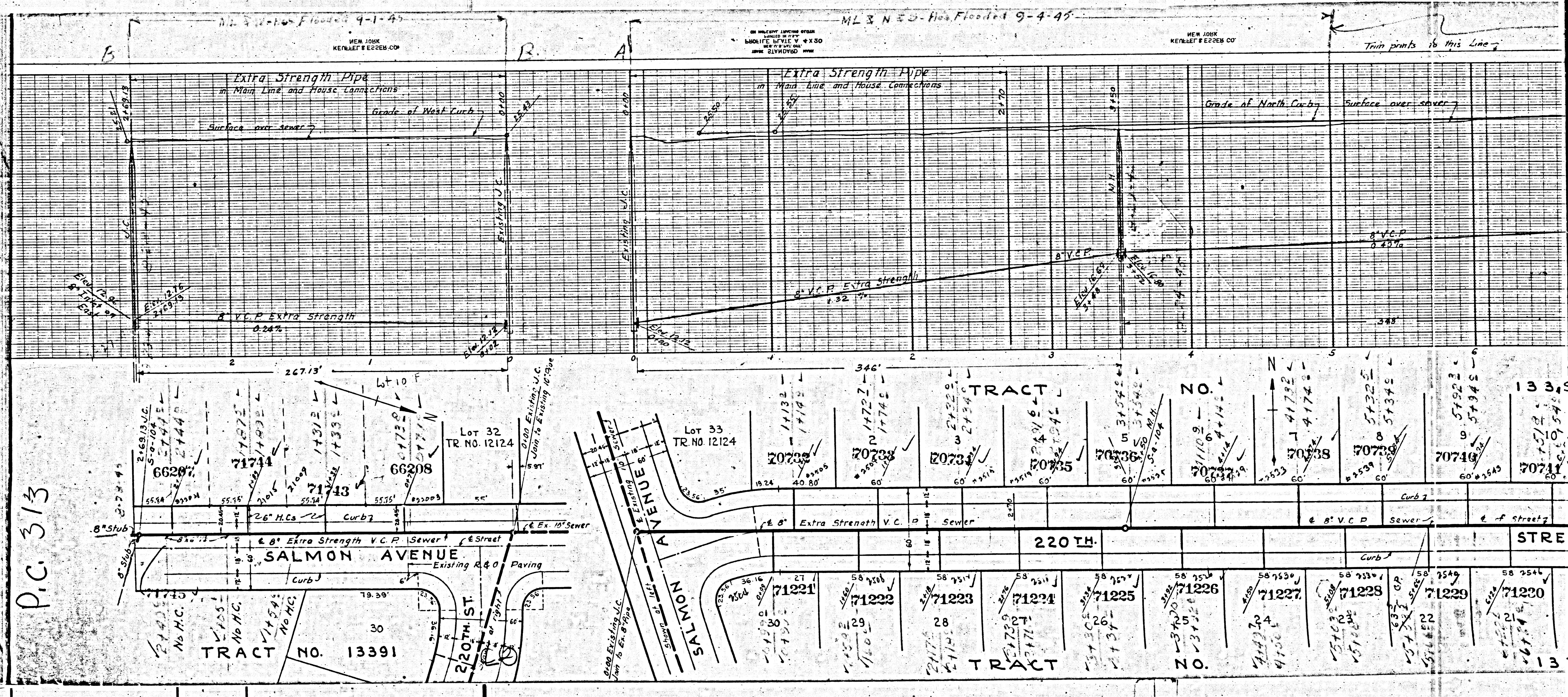
APPROVED *W. S. 30*
 ACTING CHIEF ENGINEER OF COUNTY SANITATION DISTRICT NO. 8

CHECKED BY *W. S. 30*
 OFFICE OF COUNTY ENGINEER REG. NO. 828



INDEX MAP
 SCALE 1" = 500'

EO



P.C. 313