

Station	Elevation	Station	Elevation
65	440.00	71	701.00
64	442.00	70	714.85
63	513.00	69	714.85
62	519.50	68	714.85
61	614.25	67	714.85
60	714.85	66	714.85
59	714.85	65	714.85
58	810.15	64	714.85
57	810.15	63	714.85
56	810.15	62	714.85
55	911.5	61	714.85
54	911.5	60	714.85
53	911.5	59	714.85
52	1012.0	58	714.85
51	1012.0	57	714.85
50	1012.0	56	714.85
49	1012.0	55	714.85
48	1012.0	54	714.85
47	1012.0	53	714.85
46	1012.0	52	714.85

1. USE SPECIAL MANHOLE FRAMES AND COVERS, 3x30S EXCEPT AS NOTED.
2. USE STANDARD STRENGTH PIPE EXCEPT AS NOTED.
3. USE CEMENT MORTAR FOR ALL VITRIFIED CLAY PIPE JOINTS.
4. REGRADE ALL TRENCH WITHIN PAVED AREA TO MEET LOS ANGELES COUNTY ROAD DEPT REQUIREMENTS.
5. ENGAGE FOUR FEET OF SEWER AT POINTS OF INTERFERENCE WITH POLES AS PER S-116.
6. ALL STRUCTURES SHALL BE BRICK SEWER STRUCTURES 3x30S EXCEPT AS NOTED.
7. CONSTRUCT TIPS OF ALL STRUCTURES IN RIGHTS OF WAY 6' ABOVE FINISHED GRADE.

PROFILE, ALIGNMENT AND GRADE OF
SANITARY SEWERS
 TO BE CONSTRUCTED IN
SANITARY SEWER RIGHTS OF WAY
 IN TRACT NO. 13151, M.B.
157TH STREET
 BETWEEN TRINITE AVE AND PATRONELLA AVE

PRIVATE CONTRACT NO. 321
 W.S. 25

ONE SHEET

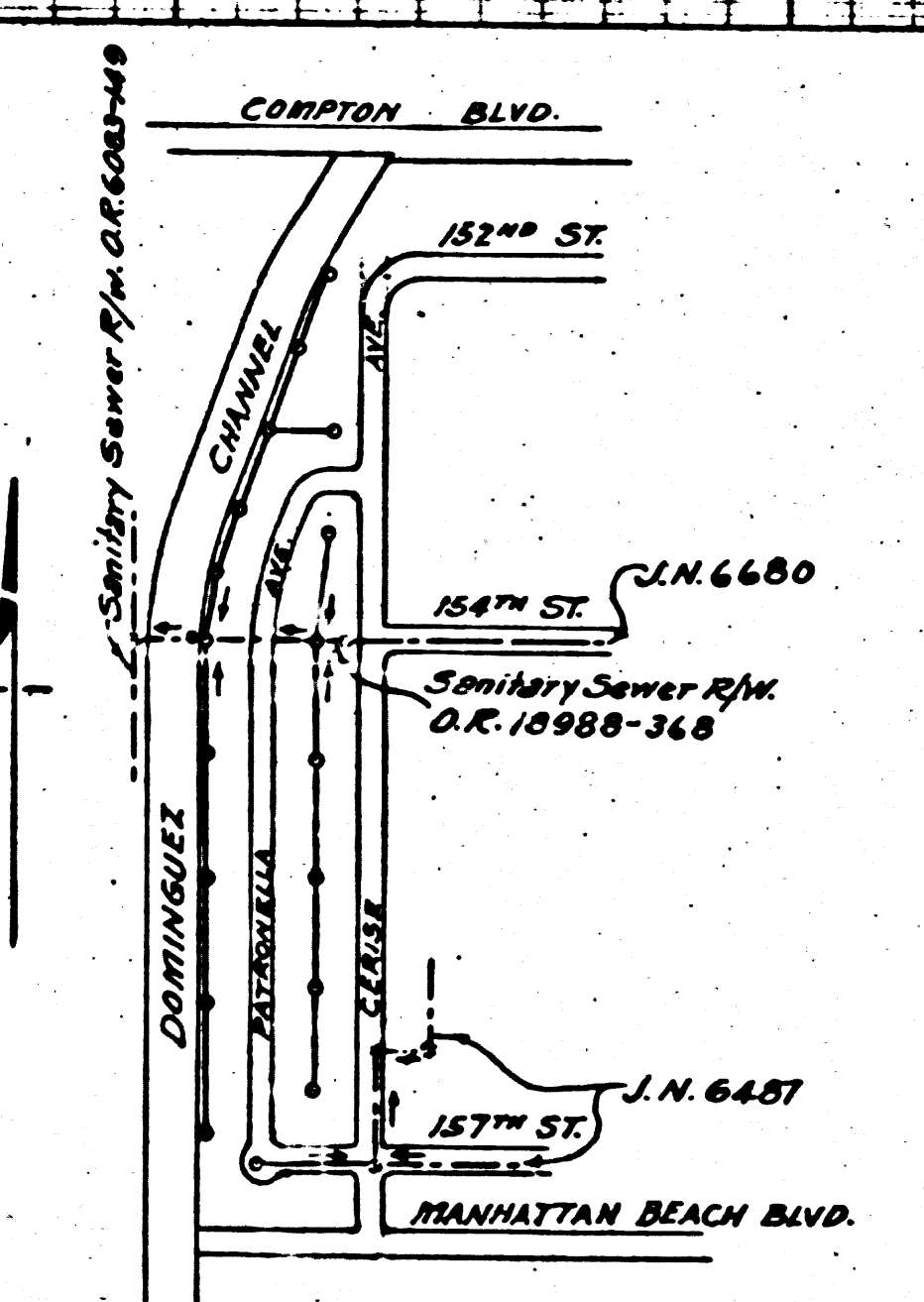
SCALE: VERT. 1"=4'
 HORIZ. 1"=40'

PREPARED IN THE OFFICES OF
JONES & GILBERT

BY: *Paul Jones*
 REG. C.E. NO. 2211

FOR LEGEND
 SEE PLAN S-Q-64

NOTE:
 GRADES TO WHICH THIS IMPROVEMENT IS TO BE CONSTRUCTED ARE SHOWN ON PLAN AND PROFILE. GRADE POINTS FOR TOP OF CURB, CENTER LINE OF STREET, OR CENTER LINE OF ALLEY ARE SHOWN BY CIRCLES ON PROFILE. AT ALL POINTS BETWEEN DESIGNATED POINTS THE GRADE SHALL BE ESTABLISHED SO AS TO CONFORM TO A STRAIGHT LINE DRAWN BETWEEN SAID DESIGNATED POINTS. ELEVATIONS ARE IN FEET ABOVE U.S.S. DATUM OR MEAN SEA LEVEL. THIS DRAWING AND THE DATA HEREON ARE HEREBY MADE A PART OF THE SPECIFICATIONS. WORK SHALL BE CONSTRUCTED ACCORDING TO SPECIFICATIONS ON FILE IN THE OFFICE OF THE COUNTY ENGINEER AND SHALL BE PROTECTED ONLY IN THE PRESENCE OF THE COUNTY ENGINEER. BEFORE WORK CAN BE STARTED THE CONTRACTOR MUST OBTAIN A PERMIT TO EXCAVATE IN THE COUNTY STREETS FROM THE L.A. COUNTY ROAD DEPT. 100 HALL OF RECORDS AND MAKE A REPORT TO THE COUNTY ENGINEER, 100 UNION LEAGUE BUILDING, SUFFICIENT TO COVER THE COST OF CONSTRUCTION INSPECTION AND RECORD PLANS.



Final C&T.P. 4/25/46

Trim Line

CHECKED BY: *Archie W. Brown*
 OFFICE OF COUNTY ENGINEER, LOS ANGELES, CALIF.

6480

SEE SHEET 6480 FOR
ADDITIONAL DATA
DATE 11/19/50

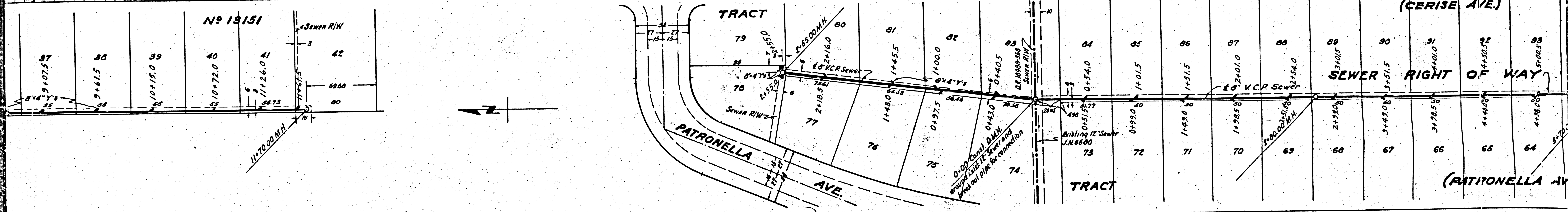
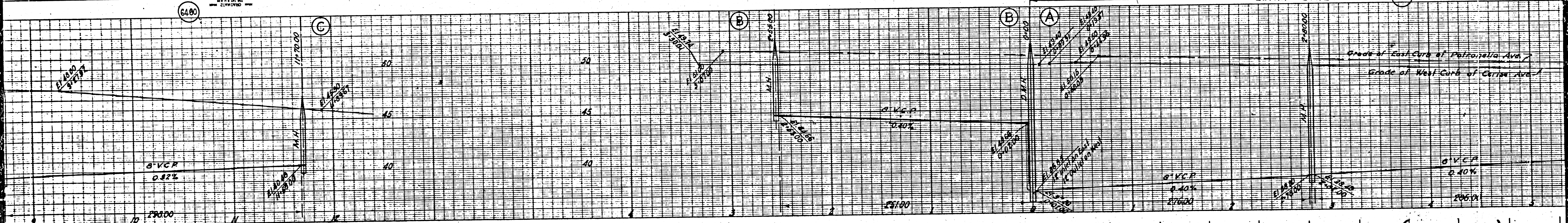
SEE SHEET 6480 FOR
ADDITIONAL DATA
DATE 11/19/50

SEE SHEET 6480 FOR
ADDITIONAL DATA
DATE 11/19/50

SEE SHEET 6480 FOR
ADDITIONAL DATA
DATE 11/19/50

SEE SHEET 6480 FOR
ADDITIONAL DATA
DATE 11/19/50

EXTRA STRENGTH PIPE 6459



No 13151

TRACT

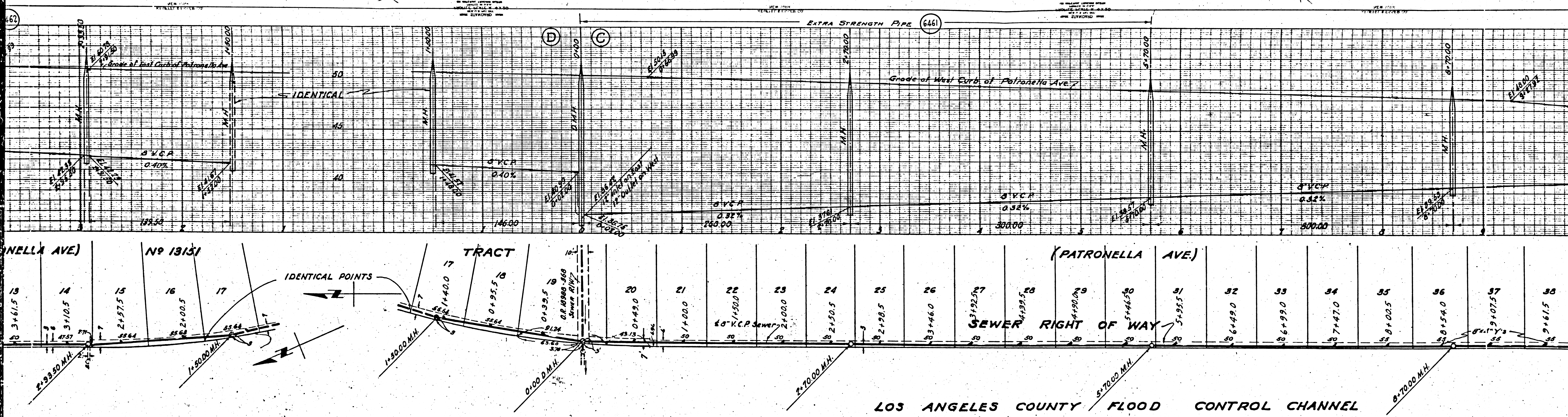
(CERISE AVE.)

SEWER RIGHT OF WAY

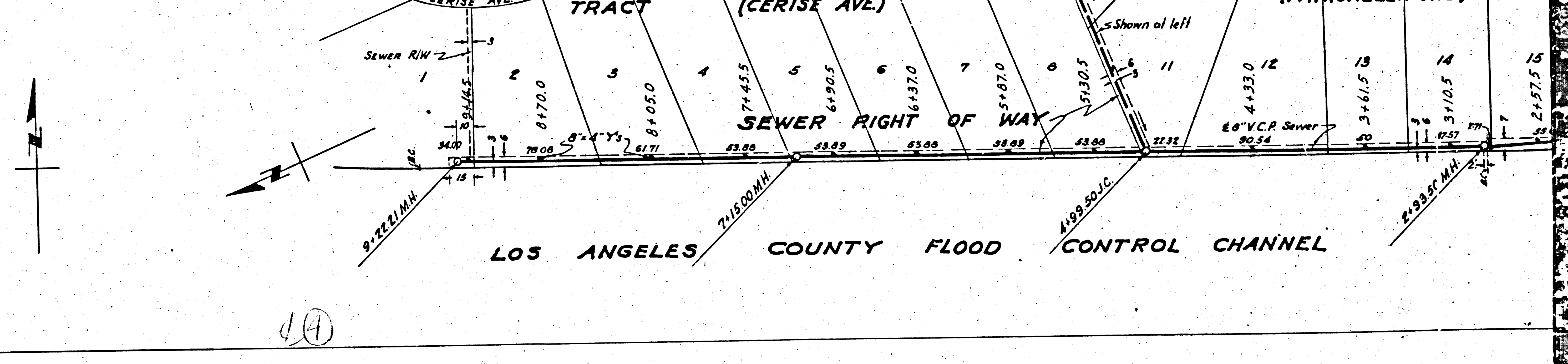
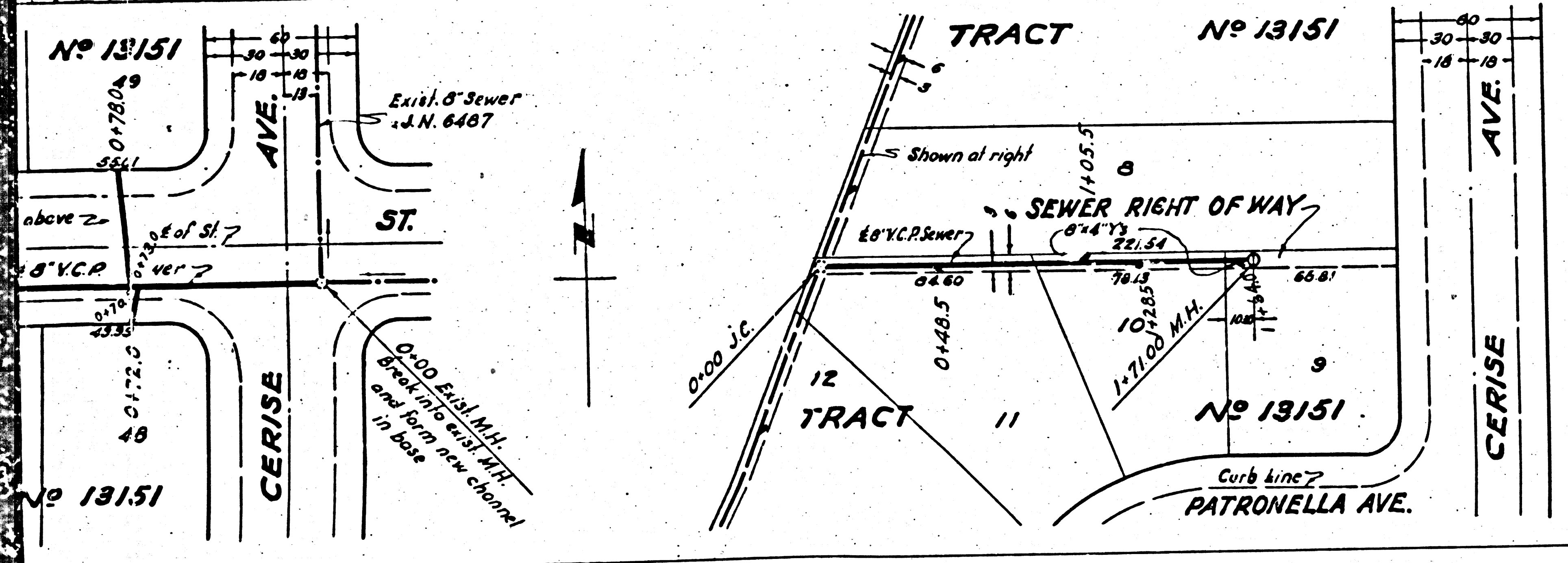
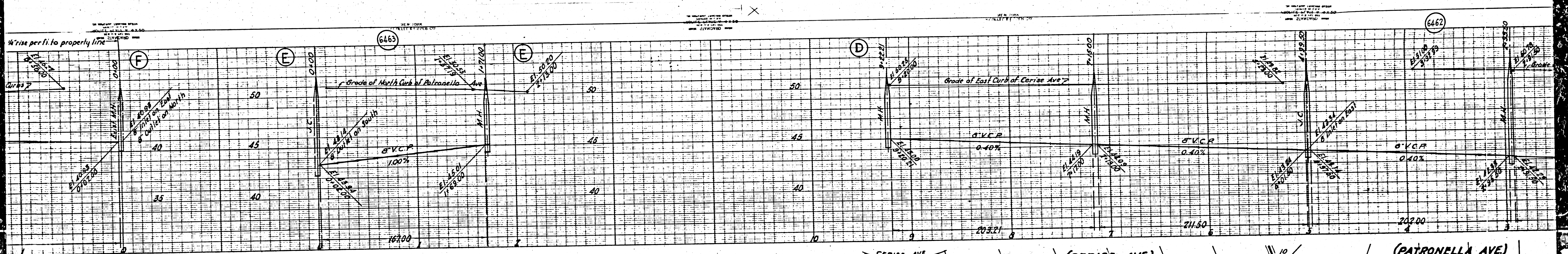
PATRONELLA AVE.

TRACT

(PATRONELLA AVE.)

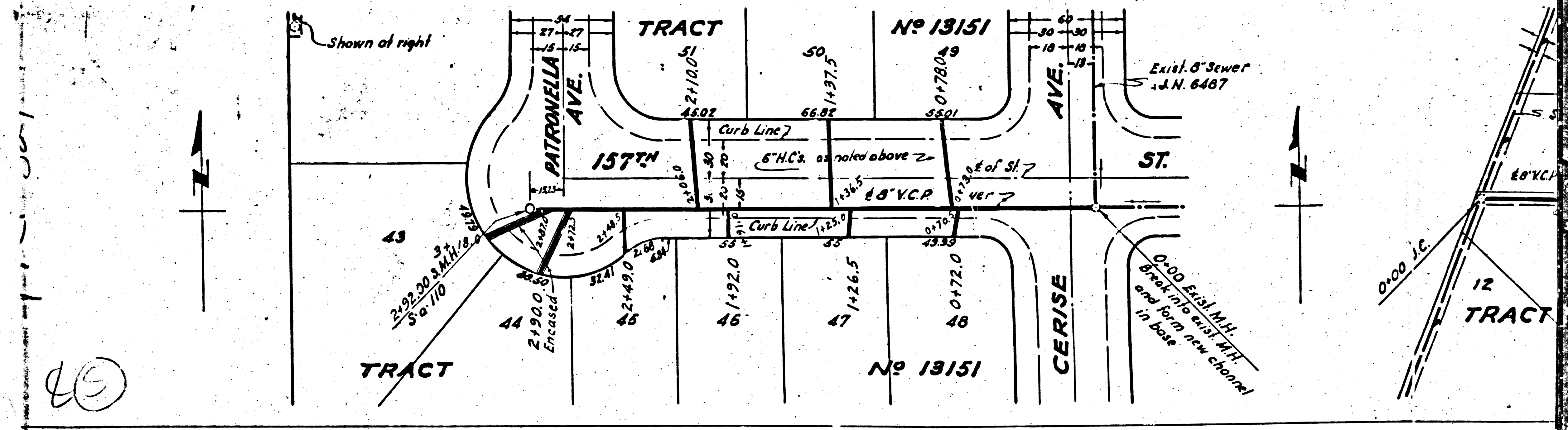
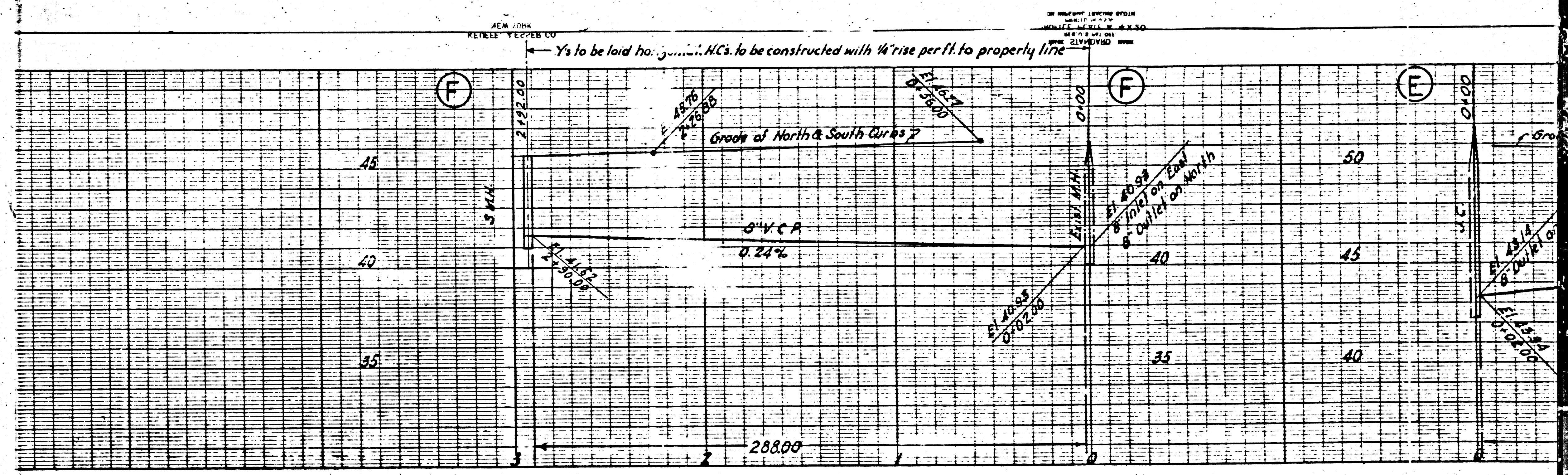


40



LOS ANGELES COUNTY FLOOD CONTROL CHANNEL

(14)



45