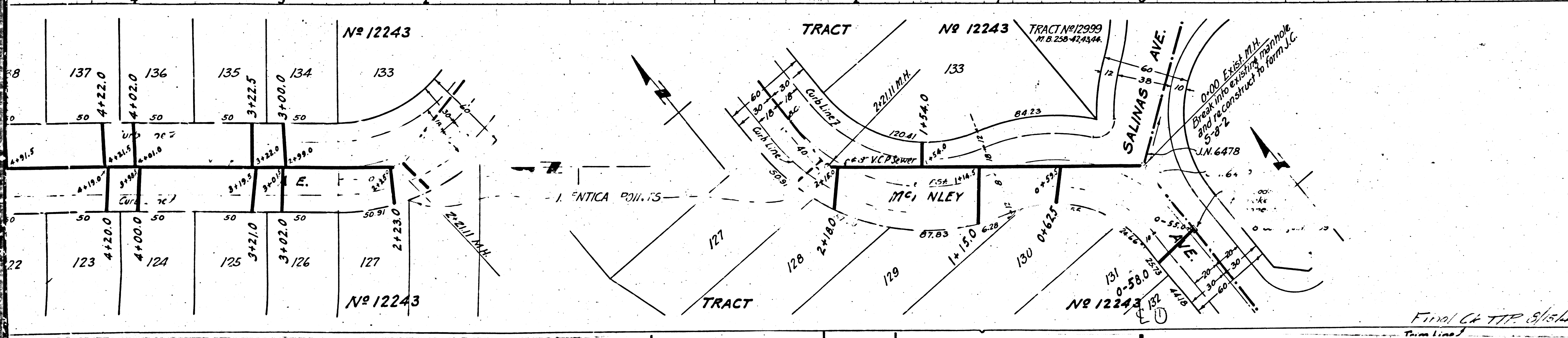
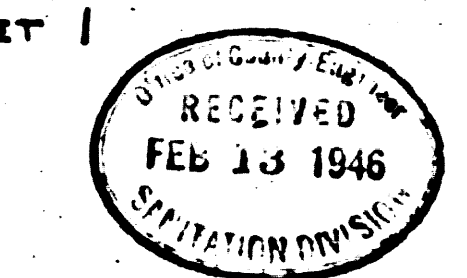


PROFILE ALIGNMENT AND GRADE OF		(2)
SANITARY SEWERS		
TO BE CONSTRUCTED IN		
MCKINLEY AVENUE		
BETWEEN SALINAS AVE. AND EL SEGUNDO BLVD.		
PRIVATE CONTRACT NO. 332		
W.S. 26		
SHEET 2 OF 3 SHEETS		
Scale: VERT. 1" = 4'	Nov. 1945.	
PREPARED IN THE OFFICES OF		
JONES AND GILBERT		



FOR LEGEND
SEE PLAN NO. 5064

FOR CONSTRUCTION NOTES, SEE SHEET 1



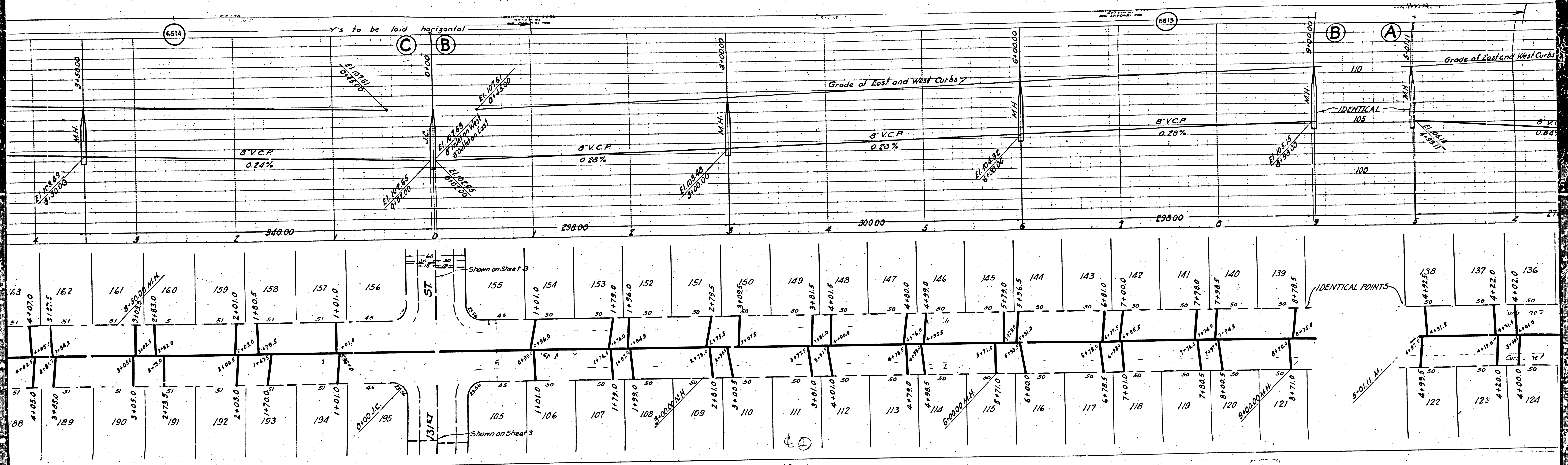
COUNTY OF LOS ANGELES, CALIFORNIA.

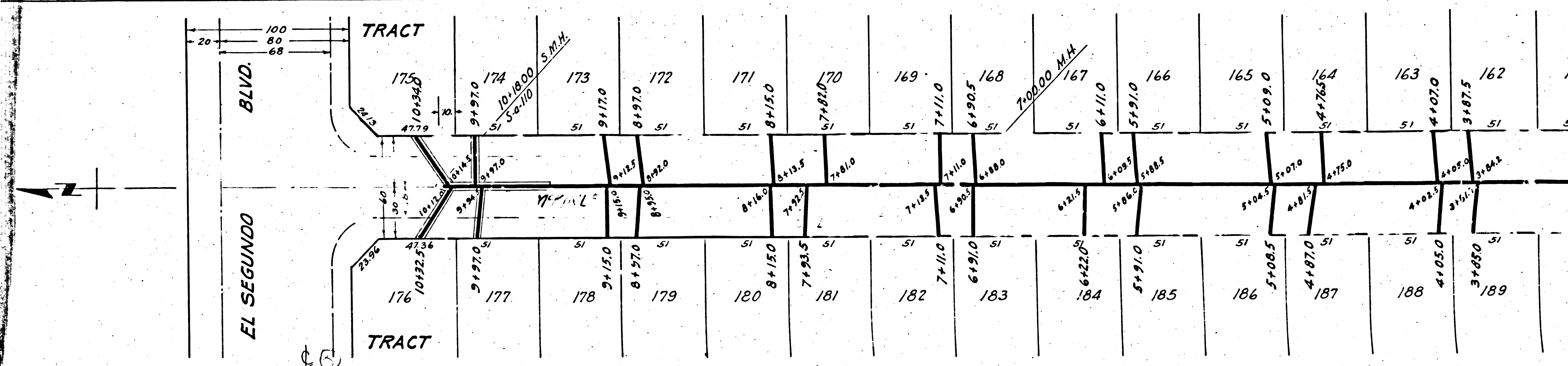
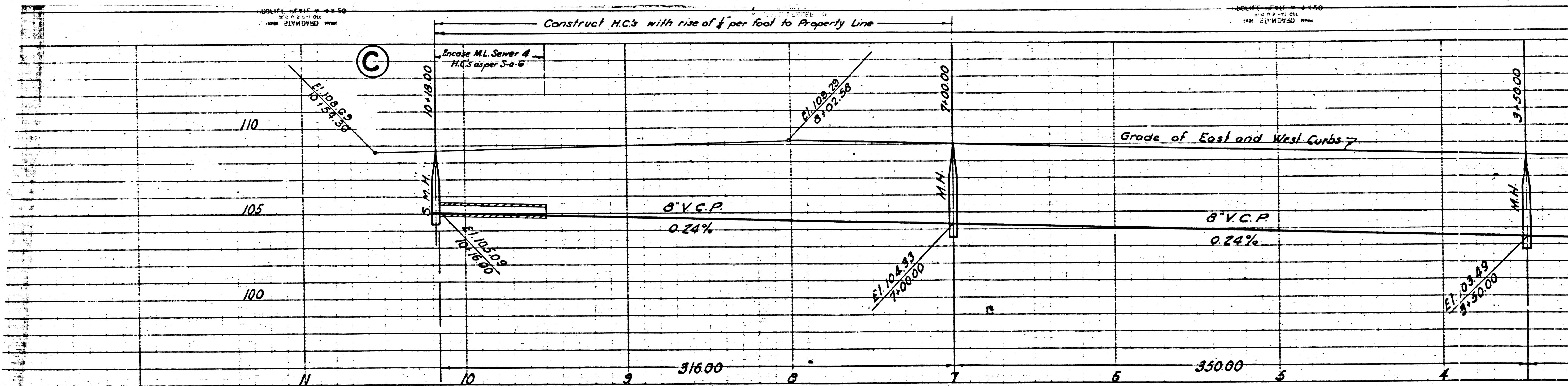
APPROVED *Alfred Jones*
COUNTY ENGINEER

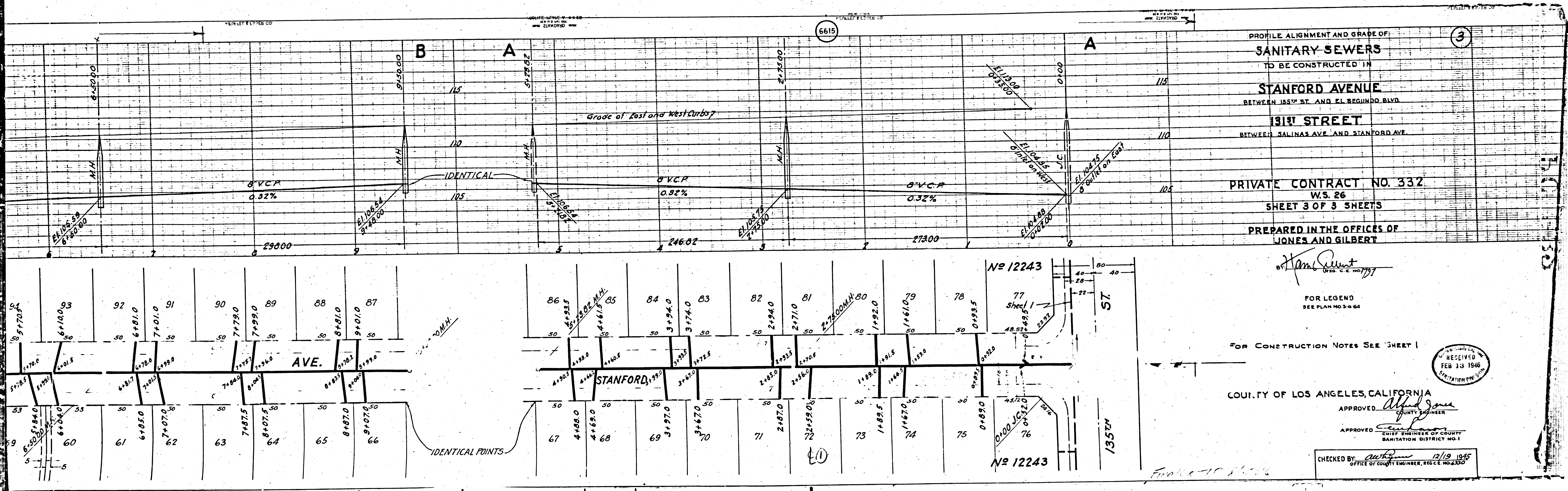
APPROVED *[Signature]*
CHIEF ENGINEER OF COUNTY
SANITATION DISTRICT NO. 1.

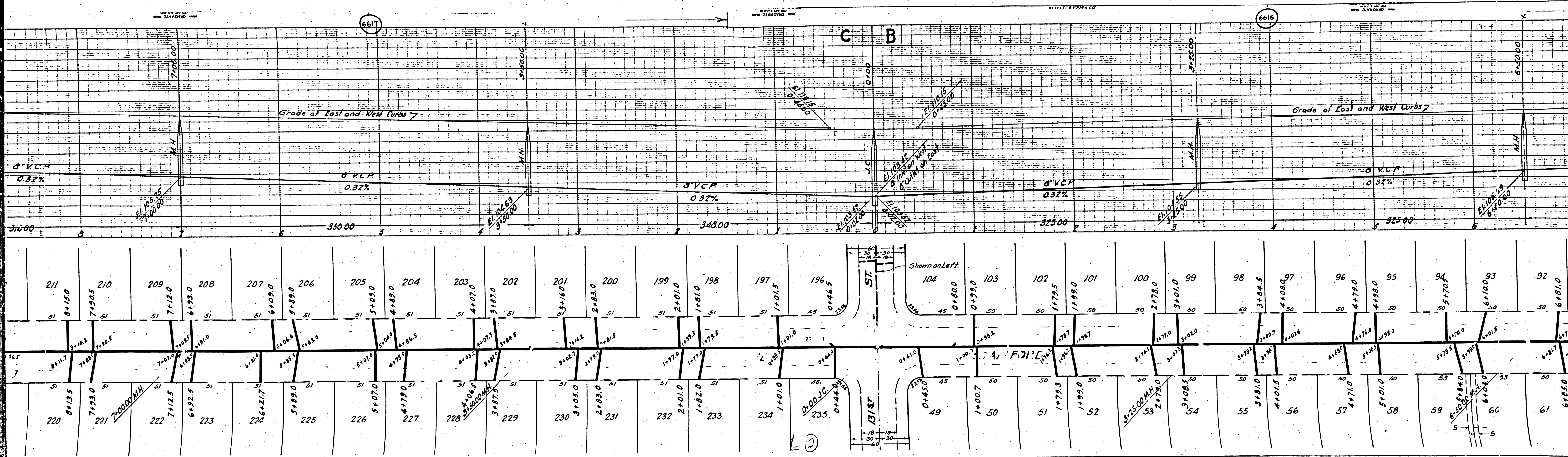
CHECKED BY *[Signature]* 12/19 1945
OFFICE OF COUNTY ENGINEER, ROOM NO. 4330

Final C&TTP 8/15/46









6617

6616

C B

②

