

6718

County Surveyor B.R.M.P.  
Elev. 1920.00  
at intersection of Eastland  
Ave. & Anaheim Telephone St.

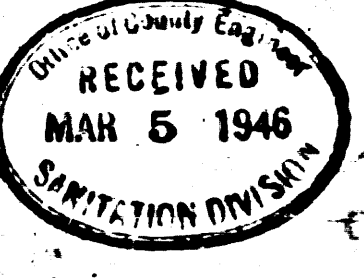
- 1. USE BEST FIT. MANHOLE FRAMES AND COVERS.
- 2. USE STANDARD STRENGTH PIPE, EXCEPT AS NOTED.
- 3. USE CEMENT MORTAR FOR ALL VITRIFIED CLAY PIPE JOINTS.
- 4. RESURFACE ALL TRENCH WITHIN PAVED AREA TO MEET LOS ANGELES COUNTY ROAD DEPT. REQUIREMENTS.
- 5. ENCASE FOUR FEET OF SEWER AT POINTS OF INTERFERENCE WITH POLES AS PER D.C. 6.
- 6. ALL STRUCTURES SHALL BE BRICK SEWER STRUCTURES 3.0' DIA.

PLAN, ALIGNMENT AND GRADE OF  
**SANITARY SEWER**  
TO SERVE THE FACILITIES OF THE  
**ROSEWOOD PARK ELEMENTARY SCHOOL**  
3401 EASTLAND AVENUE  
MONTEBELLO UNIFIED SCHOOL DISTRICT  
MONTEBELLO, CALIF.  
PRIVATE CONTRACT NO. 337  
W.S. 36  
SCALE: VERTICAL 1"=4'  
HORIZONTAL 1"=40'  
ONE SHEET  
JAN 1946

PREPARED IN THE OFFICES OF  
**RALPH C. FLEWELLING**  
BY *John S. Gregory*  
REG. C.E. NO. 6153

FOR LEGEND  
SEE PLAN NO. 364

NOTE:  
GRADES TO WHICH THIS IMPROVEMENT IS TO BE CONSTRUCTED ARE SHOWN ON PLAN AND PROFILE. GRADE POINTS FOR TOP OF CURB, CENTER LINE OF STREET OR CENTER LINE OF ALLEY, ARE SHOWN BY CIRCLES ON PROFILE. AT ALL POINTS BETWEEN DESIGNATED POINTS THE GRADE SHALL BE ESTABLISHED SO AS TO CONFORM TO A STRAIGHT LINE DRAWN BETWEEN SAID DESIGNATED POINTS. ELEVATIONS ARE IN FEET ABOVE U.S.S. DATUM OR MEAN SEA LEVEL.  
THIS DRAWING AND THE DATA HEREON ARE HEREBY MADE A PART OF THE SPECIFICATIONS. WORK SHALL BE CONSTRUCTED ACCORDING TO SPECIFICATIONS ON FILE IN THE OFFICE OF THE COUNTY ENGINEER AND SHALL BE PROSECUTED ONLY IN THE PRESENCE OF THE COUNTY ENGINEER. BEFORE WORK CAN BE STARTED THE CONTRACTOR MUST OBTAIN A PERMIT TO EXCAVE IN COUNTY STREETS FROM THE L.A. COUNTY ROAD DEPT., 108 HALL OF RECORDS, AND MAKE A DEPOSIT WITH THE COUNTY ENGINEER, 700 UNION LEAGUE BUILDING, SUFFICIENT TO COVER THE COST OF CONSTRUCTION INSPECTION AND RECORD PLANS.

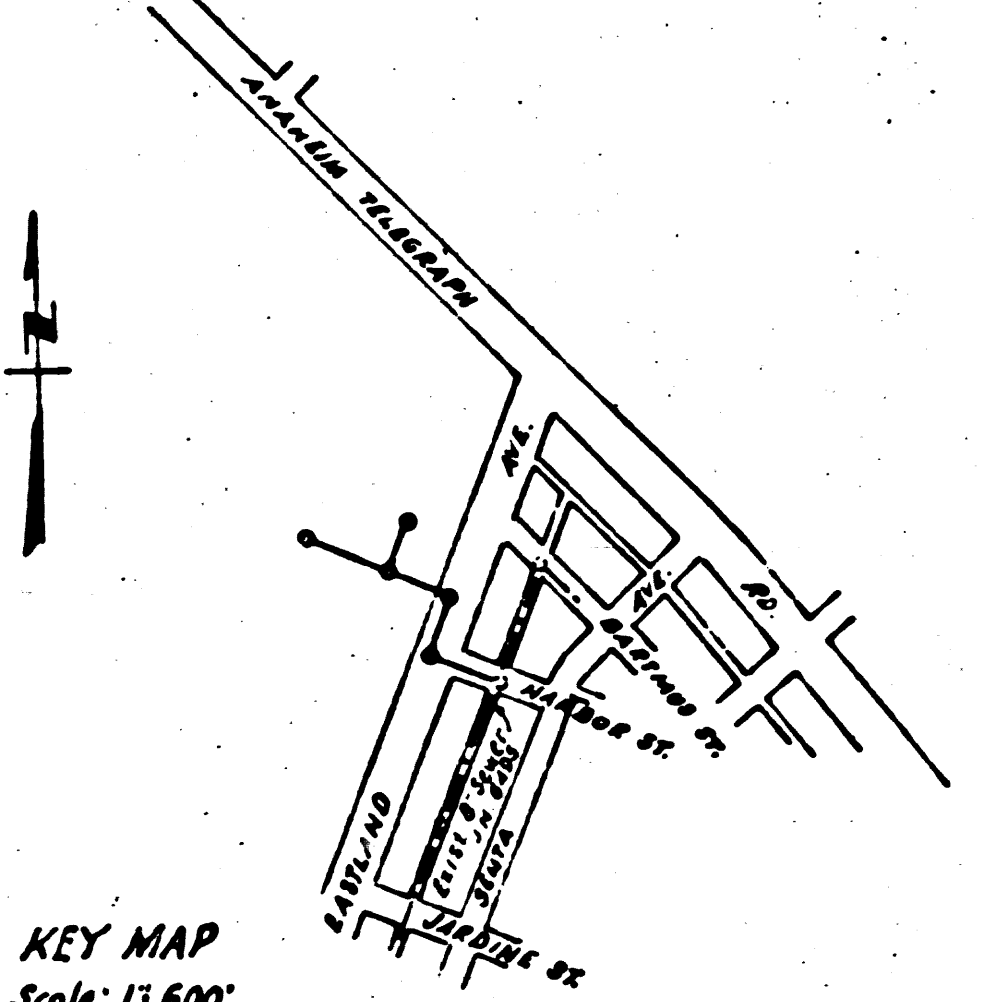
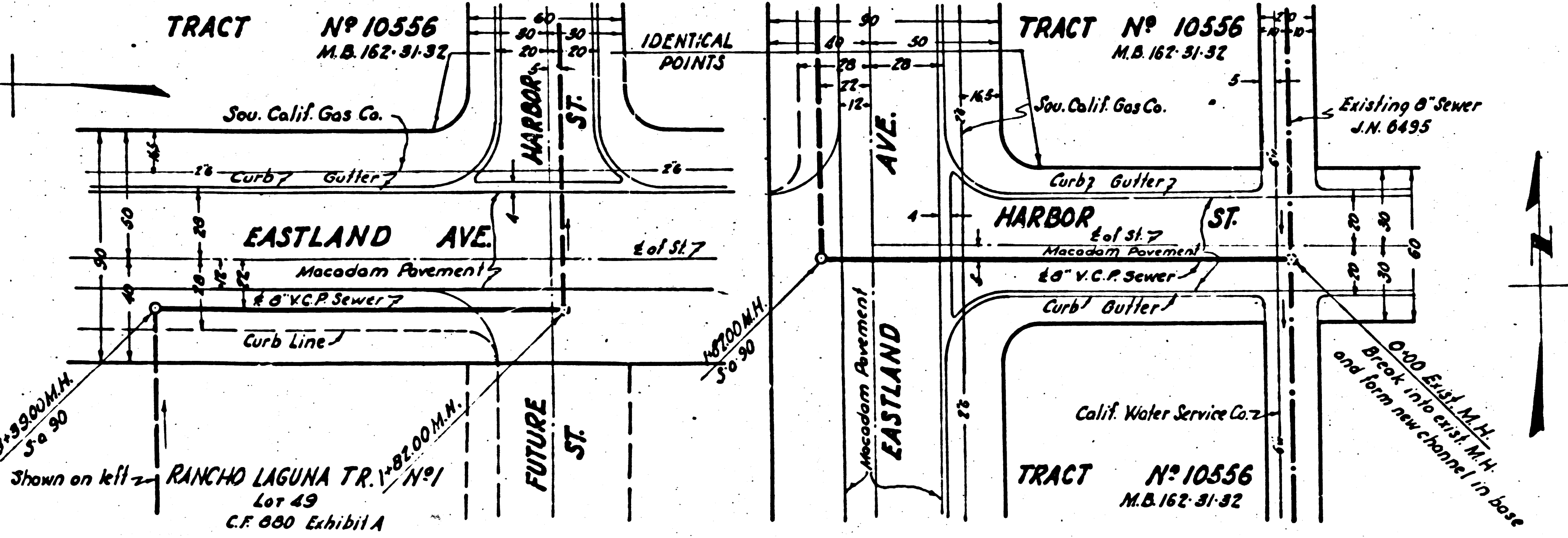
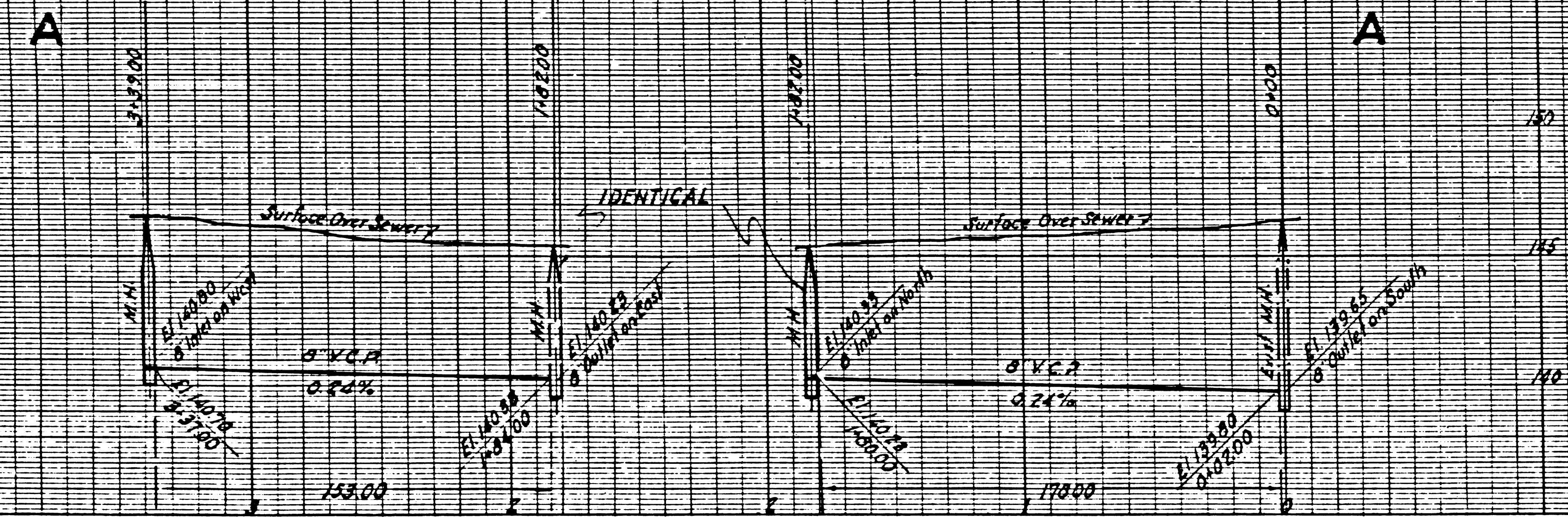


COUNTY OF LOS ANGELES, CALIFORNIA

APPROVED *Alfred Jones*  
COUNTY ENGINEER

APPROVED *Carroll*  
CHIEF ENGINEER OF COUNTY  
SANITATION DISTRICT NO. 2

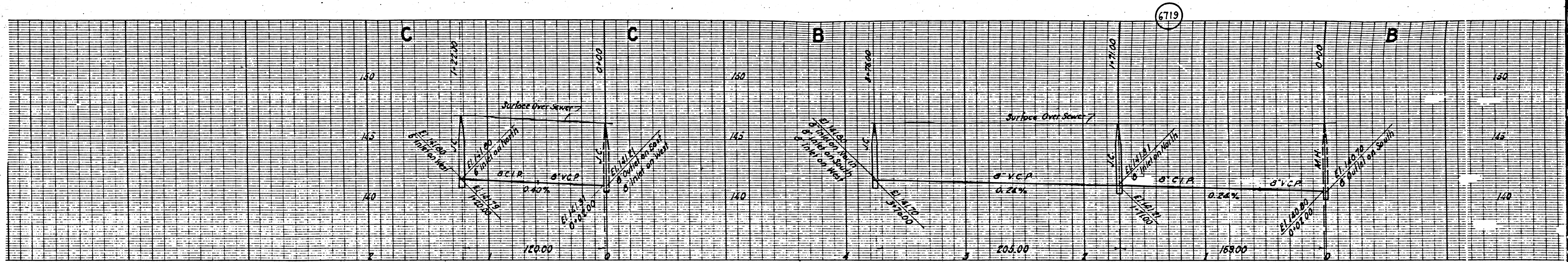
CHECKED BY *Charles W. Ryan* 1/20/46  
OFFICE OF COUNTY ENGINEER, REG. CE NO. 6354



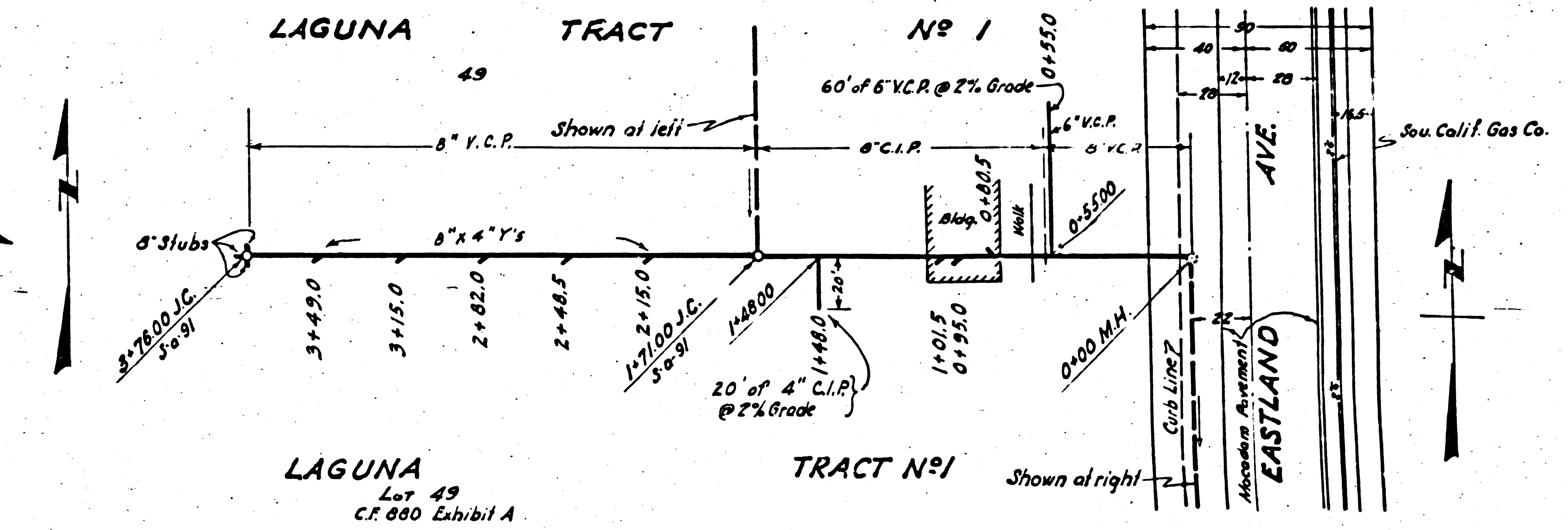
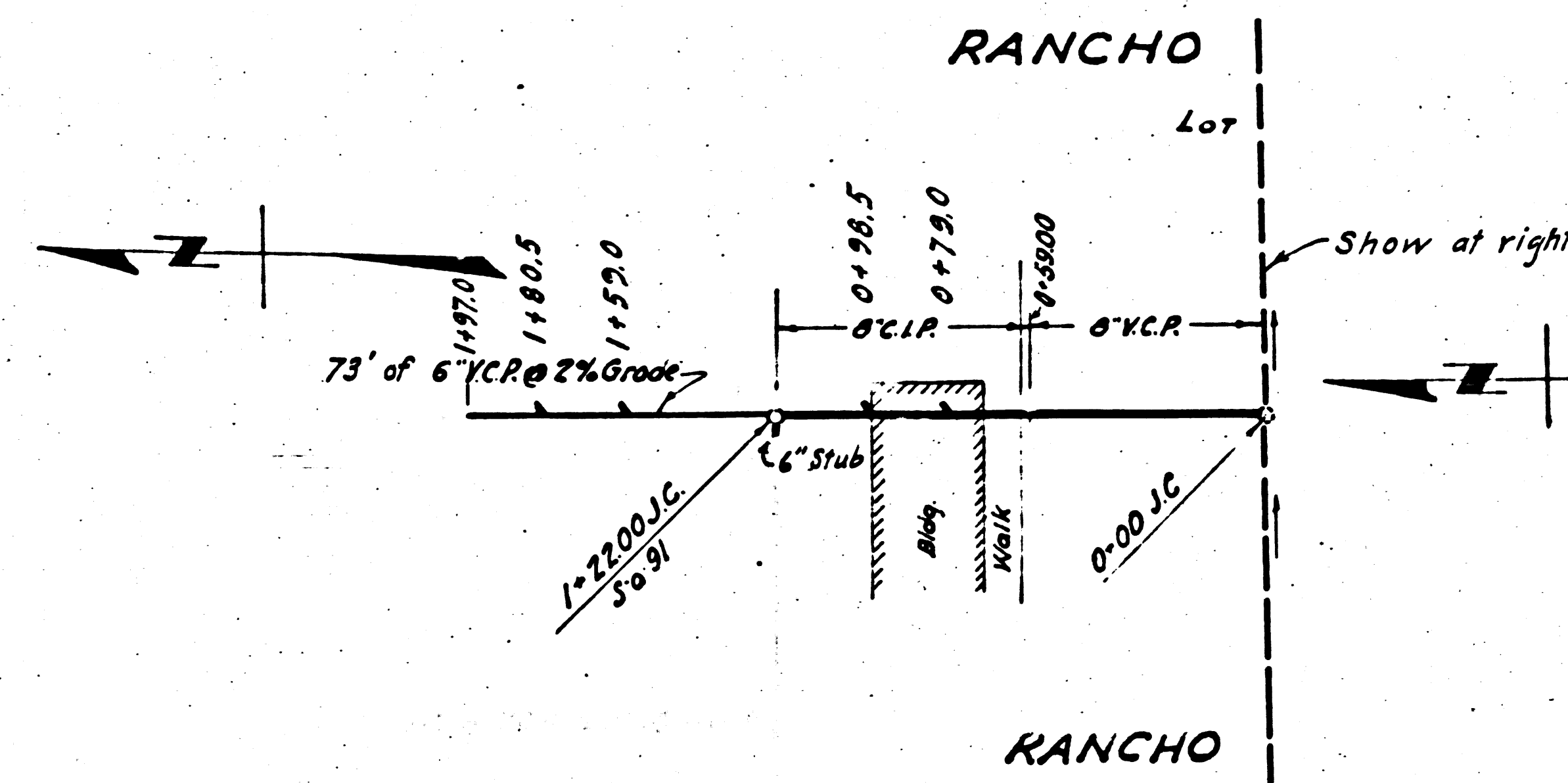
Final CE 772 10/21/46

EO

DU 334



PC 3337



4(2)

M5

M5