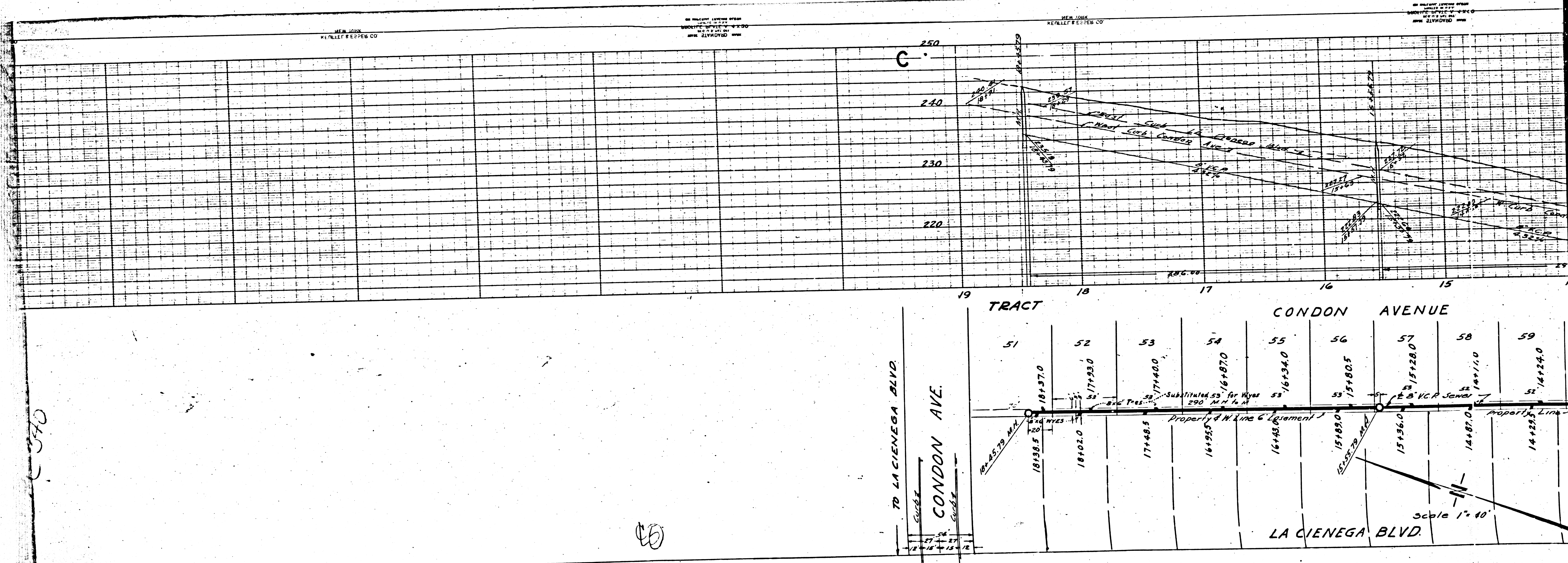


NEW YORK
KENNETH REEPEL CO

NEW YORK
KENNETH REEPEL CO

NEW YORK
KENNETH REEPEL CO



0570

60

MB

6733

(A) DOUBLE SCALE

USE SUCH OF THE FOLLOWING NOTES AS ARE PERTINENT TO THE WORK:

- (1) USE "JUST-RITE" MANHOLE FRAMES AND COVERS.
- (2) USE STANDARD STRENGTH PIPE (EXCEPT AS NOTED).
- (3) ALL STRUCTURES SHALL BE BRICK SEWER STRUCTURES 3'-10"
- (4) CONSTRUCT TOPS OF ALL STRUCTURES IN RIGHT OF WAY 6" ABOVE FINISHED GRADE.
- (5) ENCASE FOUR FEET OF SEWER AT POINTS OF INTERFERENCE WITH POLES AS PER S-P-6.
- (6) USE CEMENT MORTAR FOR VITRIFIED CLAY PIPE JOINTS.
- (7) REBURFACE ALL TRENCH WITHIN PAVED AREA TO MEET LOS ANGELES COUNTY ROAD DEPARTMENT REQUIREMENTS.
- (8) NO REPRESENTATIVE OF THE COUNTY ENGINEER WILL SURVEY OR LAYOUT ANY PORTION OF THE WORK.
- (9) THE OWNER OR HIS AUTHORIZED REPRESENTATIVE SHALL FURNISH THE COUNTY ENGINEER WITH GRADE SHEETS AND STATIONS OF ALL HOUSE CONNECTIONS AND Y-BRANCHES, AND SHALL PROVIDE STAKES FOR THEM AT THEIR PROPER LOCATIONS WITH STATIONING PLAINLY MARKED. ANY CHANGE OF LOCATION SHALL BE REQUESTED IN WRITING BY THE OWNER OR HIS REPRESENTATIVE.

BENCH MARK

1. Elev 253.00 "Iron band in lead in curb & return S.W. corner LA CIENEGA & JAMASK P.S. 164 Pgs 51

2. Elev 162.55 "4" Iron band in E. intersection Maskey 163rd Street

NOTE: Add 272.21 "Elev. of top of curb & return S.W. corner LA CIENEGA & JAMASK P.S. 164 Pgs 51

Add 2.92 "Elev. in contact to L.A. County Rd. Dept. P.M. Elevation 128.101 of S.E. Corner Sherman Ave and Cominella Ave.

PROFILE, ALIGNMENT AND GRADE OF SANITARY SEWERS TO BE CONSTRUCTED IN

SANITARY SEWER RIGHTS OF WAY IN TRACT NO 12650 M.B. 272 Pgs 7-13 Incl.

PRIVATE CONTRACT NO 340 W.S. 24 SHEET 1 OF 2 SHEETS Feb 20, 1946

PREPARED IN THE OFFICES OF LOS ANGELES INVESTMENT CO.

BY: Clyde K. Mander REG. C.E. NO. 1629

FOR LEGEND SEE PLAN NO. S-4-64

NOTE: GRADES TO WHICH THIS IMPROVEMENT IS TO BE CONSTRUCTED ARE SHOWN ON PLANS AND PROFILE. GRADE POINTS FOR TOP OF CURB, CENTER LINE OF STREET OR CENTER LINE OF ALLEY ARE SHOWN BY CIRCLES ON PROFILES. AT ALL POINTS BETWEEN DESIGNATED POINTS THE GRADE SHALL BE ESTABLISHED SO AS TO CONFORM TO A STRAIGHT LINE DRAWN BETWEEN SAID DESIGNATED POINTS. ELEVATIONS ARE 5.716' BELOW U.S.S. DATUM OR MEAN SEA LEVEL.

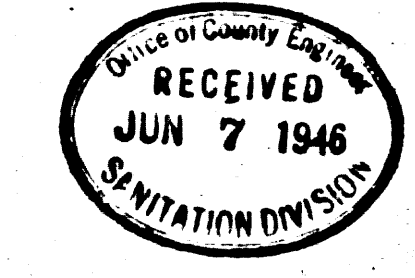
THIS DRAWING AND THE DATA HEREON ARE HEREBY MADE A PART OF THE SPECIFICATIONS. WORK SHALL BE CONSTRUCTED ACCORDING TO SPECIFICATIONS ON FILE IN THE OFFICE OF THE COUNTY ENGINEER AND SHALL BE PROSECUTED ONLY IN THE PRESENCE OF THE COUNTY ENGINEER. BEFORE WORK CAN BE STARTED, THE CONTRACTOR MUST OBTAIN A PERMIT TO EXCAVATE IN COUNTY STREETS FROM THE L.A. COUNTY ROAD DEPT., 1104 HALL OF RECORDS, AND MAKE A DEPOSIT WITH THE COUNTY ENGINEER, TWO UNIFORM LEAGUE BUILDING, SUFFICIENT TO COVER THE COST OF CONSTRUCTION INSPECTION AND RECORD PLANS.

IF WORK IS TO BE DONE IN A STATE HIGHWAY PERMIT MUST BE OBTAINED FROM THE STATE OF CALIFORNIA DIVISION OF HIGHWAYS, ONE STATE BUILDING AFTER MAKING THE REPORT WITH THE COUNTY ENGINEER.

COUNTY OF LOS ANGELES, CALIFORNIA

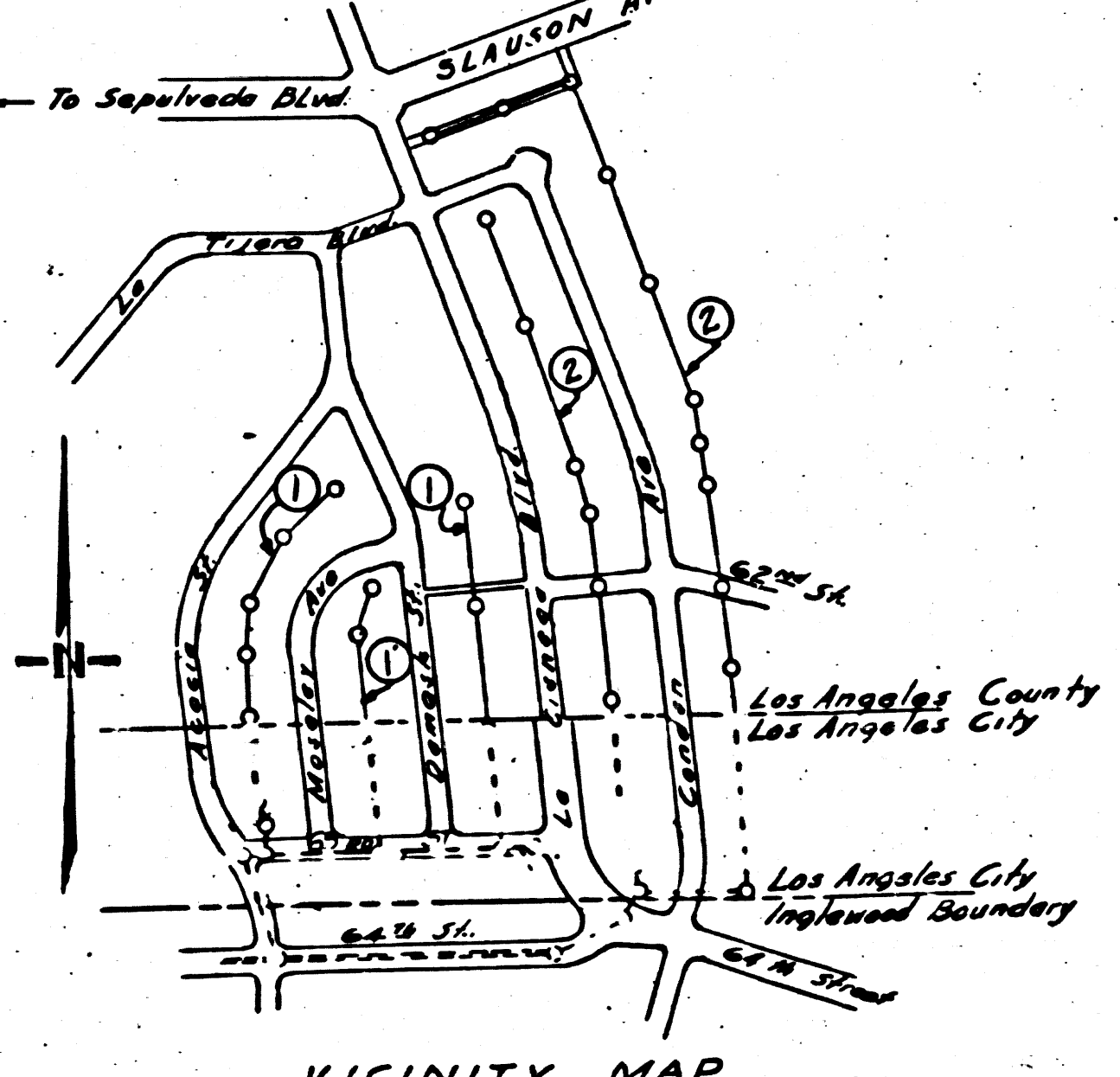
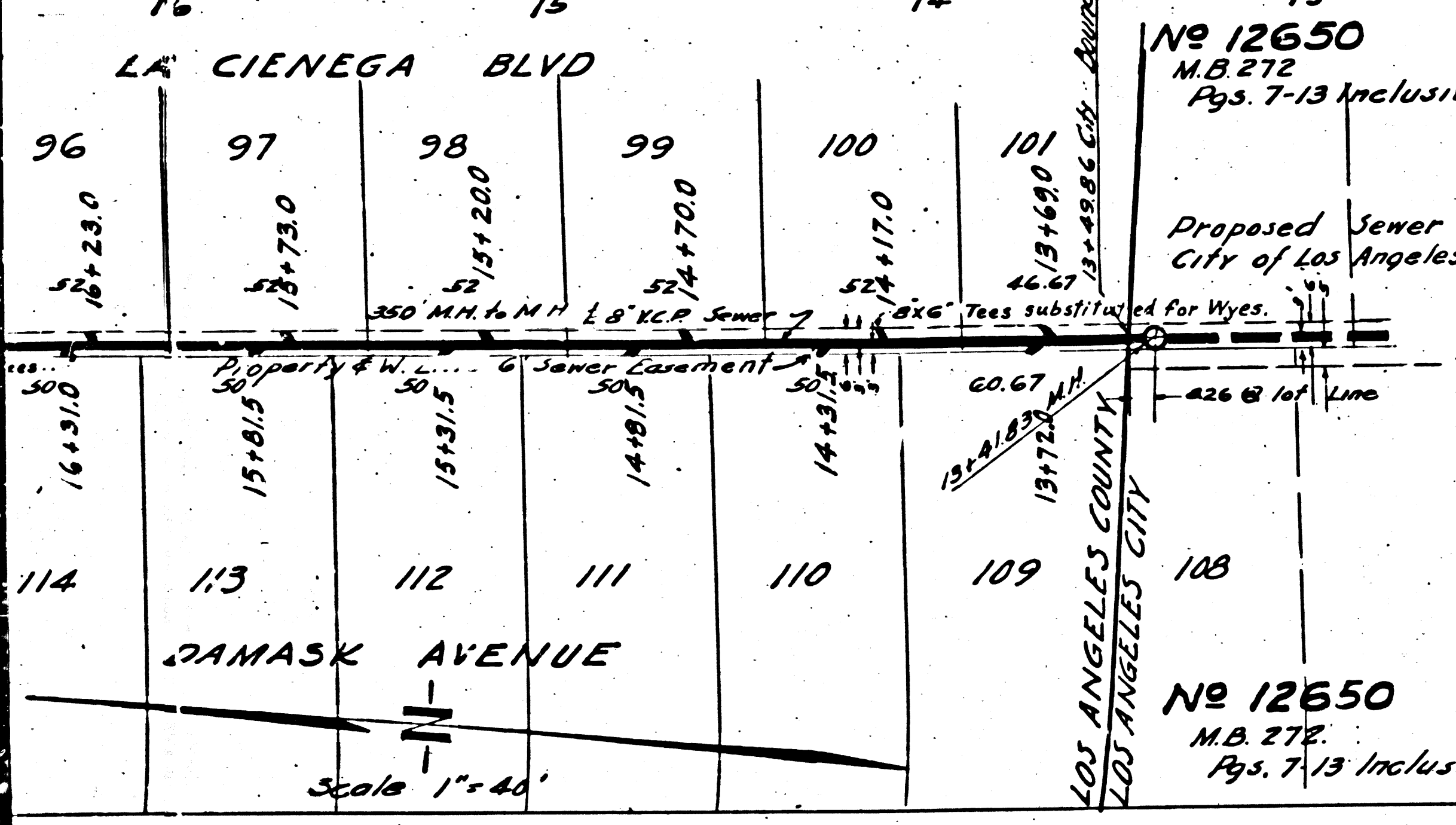
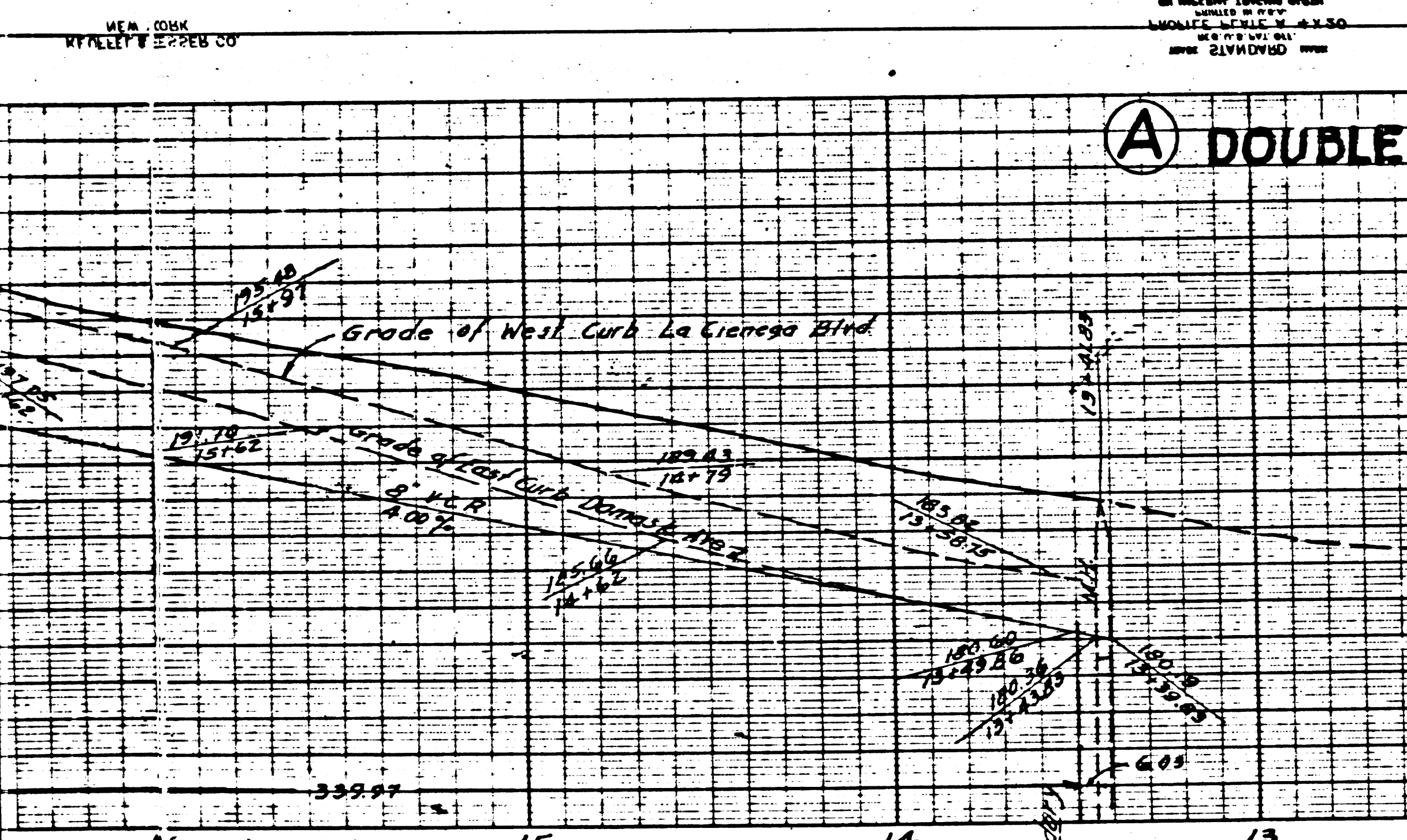
APPROVED: *Alfred J. Jones* COUNTY ENGINEER

APPROVED: *Lloyd Aldrich* CHIEF ENGINEER OF COUNTY SANITATION DISTRICT NO. 2



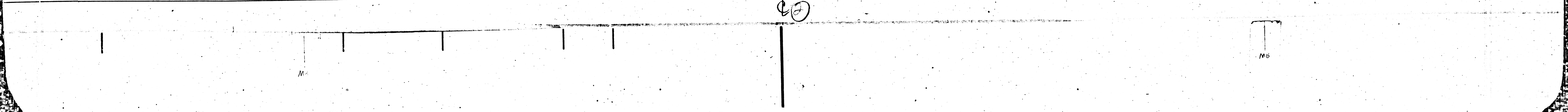
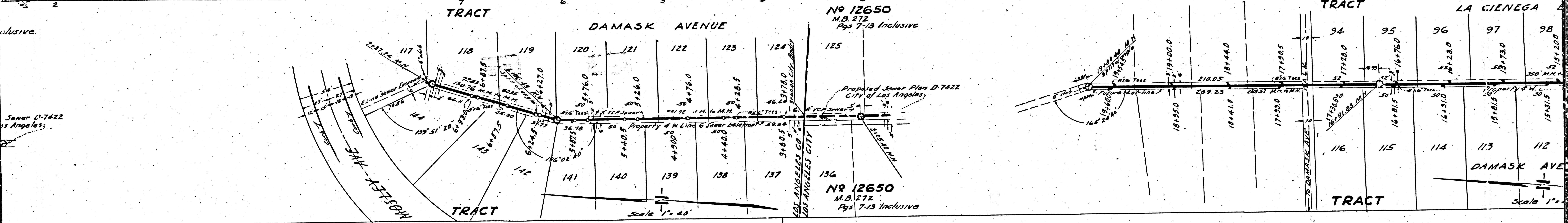
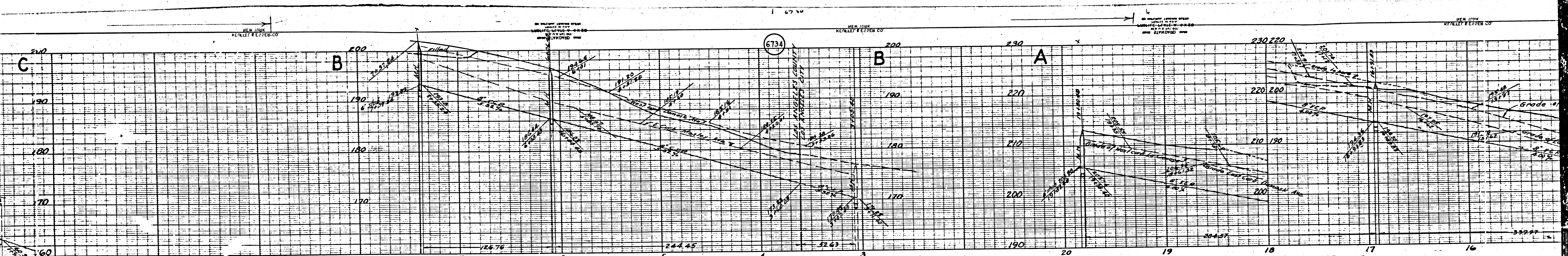
CHECKED BY: *H. L. Swales* 3-21-46 OFFICE OF COUNTY ENGINEER REG. C.E. NO. 6072

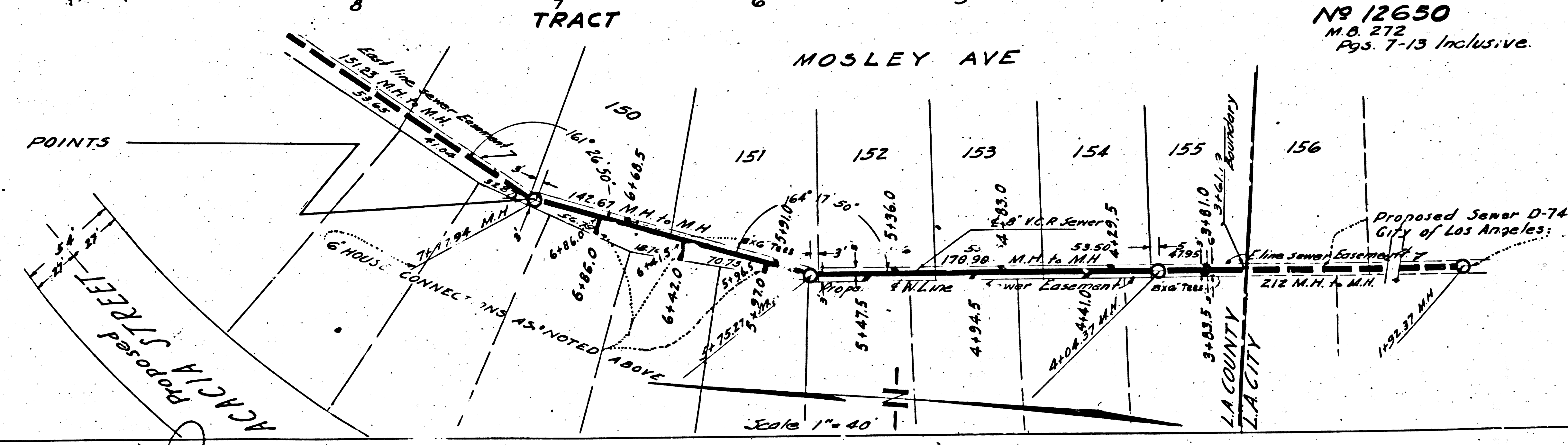
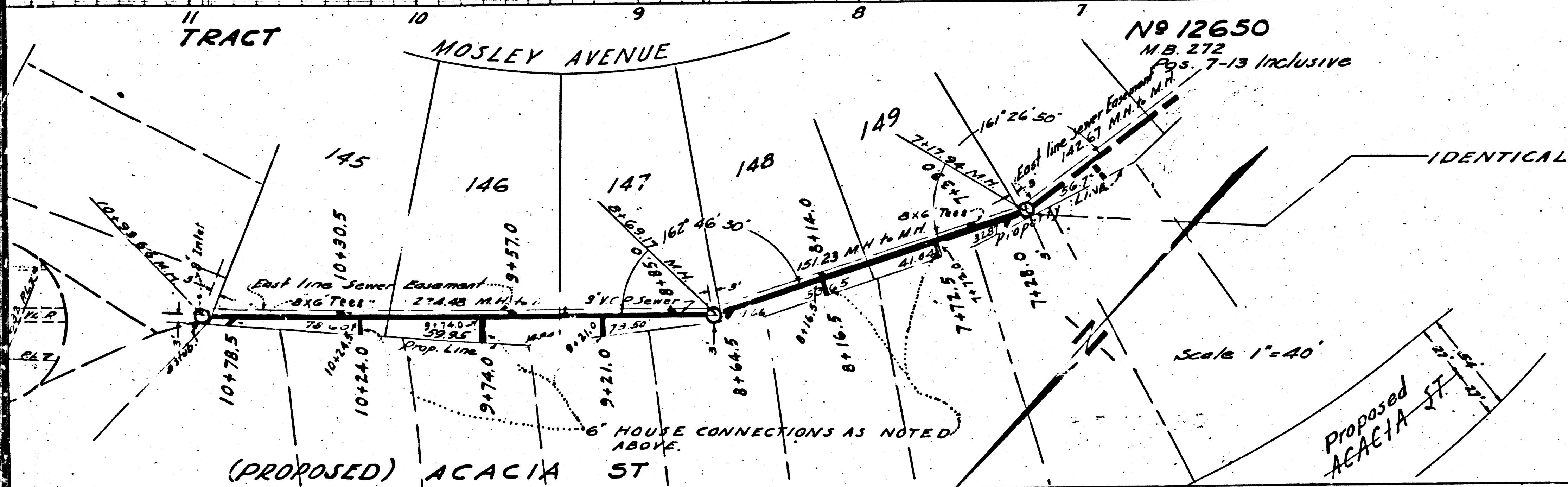
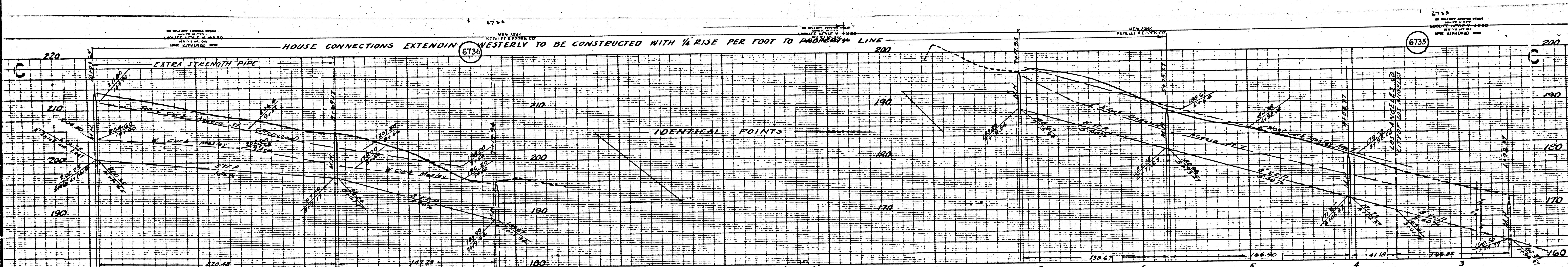
Compared with Office File C.P.



Final Ck. T.P. 1/16/46

40





6735
 6736

N^o 12650
 M.B. 272
 Pgs. 7-13 Inclusive.

N^o 12650
 M.B. 272
 Pgs. 7-13 Inclusive

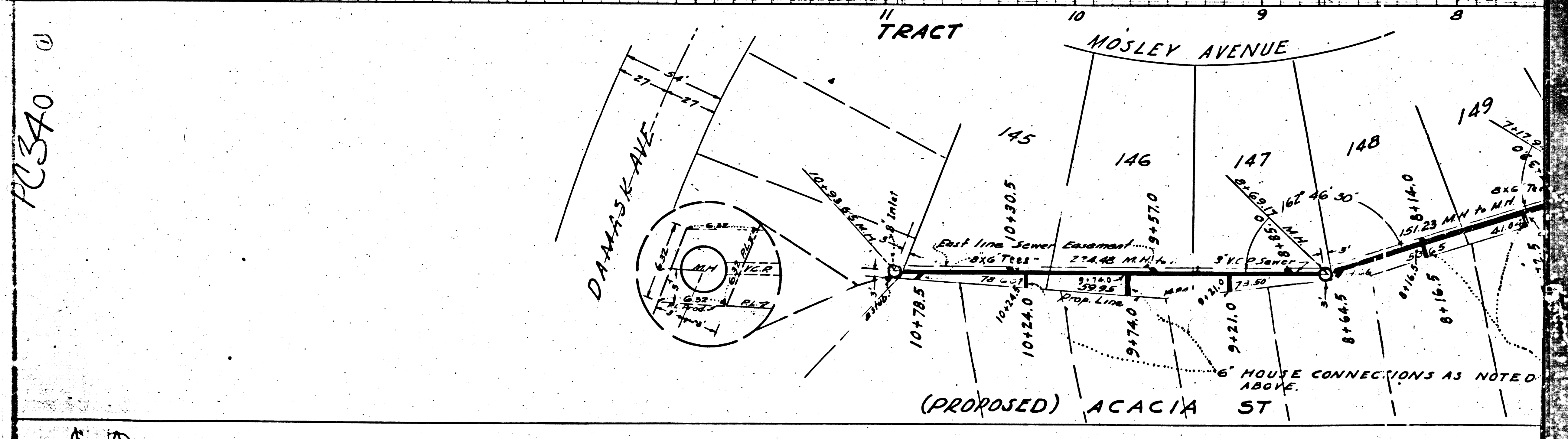
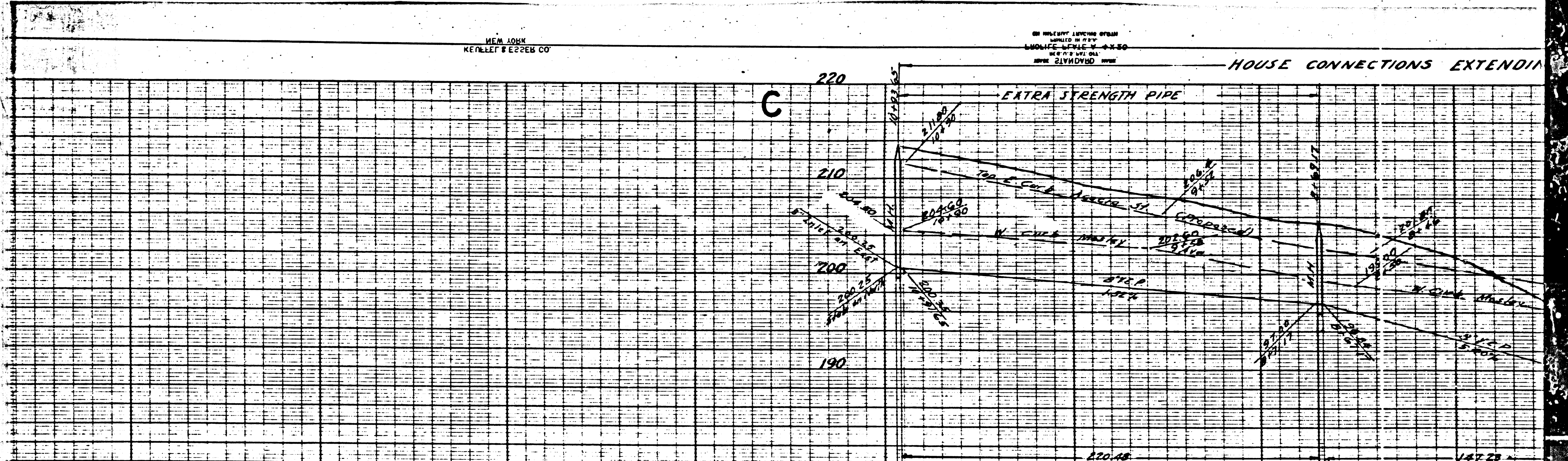
Scale 1"=40'

Scale 1"=40'

(3)

NEW YORK
KRAFFT & ECKEN CO.

HOUSE CONNECTIONS EXTENDING



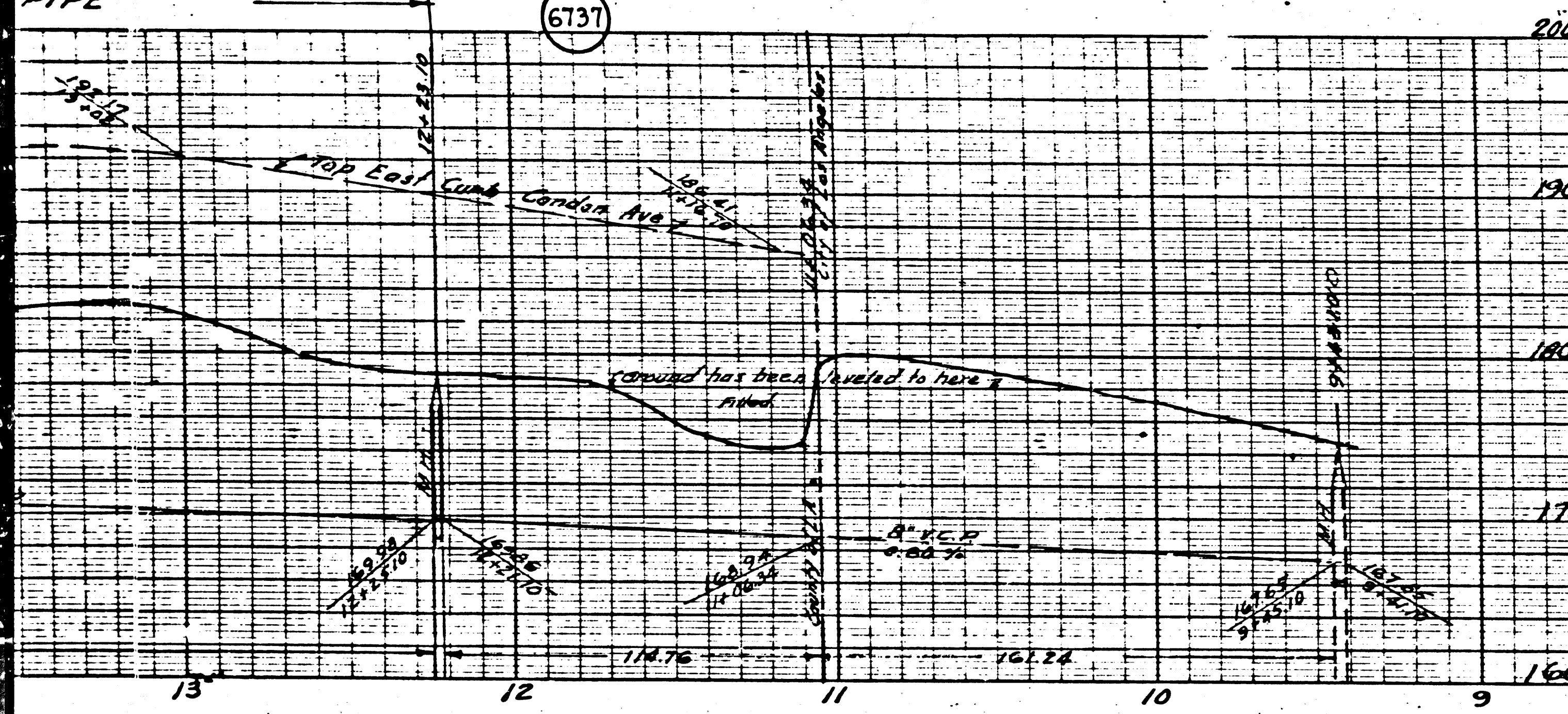
PC370 0

Ⓢ

M

M6

VEN INDEX
KENNELY & FETTER CO.
SANITATION DISTRICT NO. 9
DIVISION 10



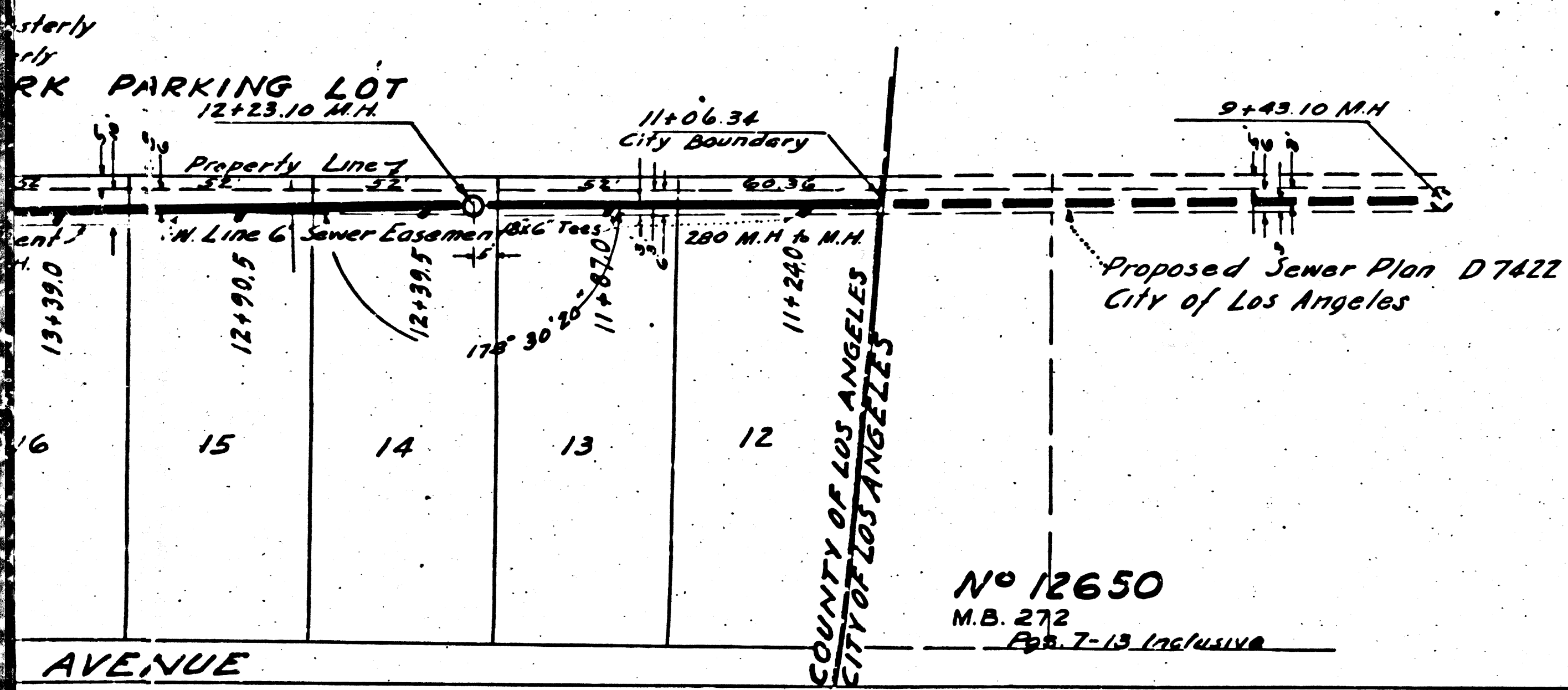
A
DOUBLE SCALE

BENCH MARK
 ELEV. 170.00
 1. ELEV. 170.00
 2. ELEV. 170.00
 3. ELEV. 170.00
 4. ELEV. 170.00
 5. ELEV. 170.00
 6. ELEV. 170.00
 7. ELEV. 170.00
 8. ELEV. 170.00
 9. ELEV. 170.00
 10. ELEV. 170.00
 11. ELEV. 170.00
 12. ELEV. 170.00
 13. ELEV. 170.00

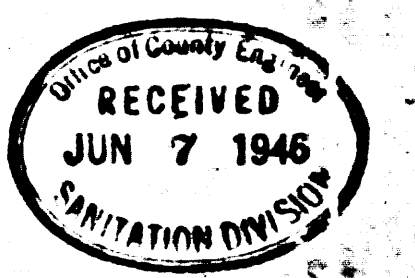
**PROFILE, ALIENMENT AND GRADE OF
SANITARY SEWERS**
 TO BE CONSTRUCTED IN
**FIRST ALLEY SOUTH OF SLAUSON AVENUE
 FIRST ALLEY EAST OF LA CIENEGA BLVD. TO LA CIENEGA BLVD.
 SANITARY SEWER RIGHTS OF WAY**
 IN TRACT NO. 12650, M.B. 272, Pgs. 7-13 INC.

**PRIVATE CONTRACT NO. 340
 W.S. 24**
SHEET 2 OF 2 SHEETS
 PREPARED IN THE OFFICES OF
LOS ANGELES INVESTMENT CO.

BY: *Clyde T. ...*
 REG. C.E. NO. 1629
 FOR LEGEND
 (SEE PLAN NO. S-4-64)
 NOTE:
 FOR DETAILS SEE SHEET NO. 1.



COUNTY OF LOS ANGELES, CALIFORNIA.
 APPROVED *Alfred Jones*
 COUNTY ENGINEER
 APPROVED *[Signature]*
 CHIEF ENGINEER OF COUNTY
 SANITATION DISTRICT NO. 9
 CHECKED BY *H.L. ...* 7-16 1946
 OFFICE OF COUNTY ENGINEER REG. CE NO. 6412



FINDING TIP 11/7/46

Compared with Office File
 C.P.

6738

6738

NEW YORK
KENNETH & ELLER CO.

NEW YORK
KENNETH & ELLER CO.

EXTRA STRENGTH PIPE

EXTRA STRENGTH PIPE

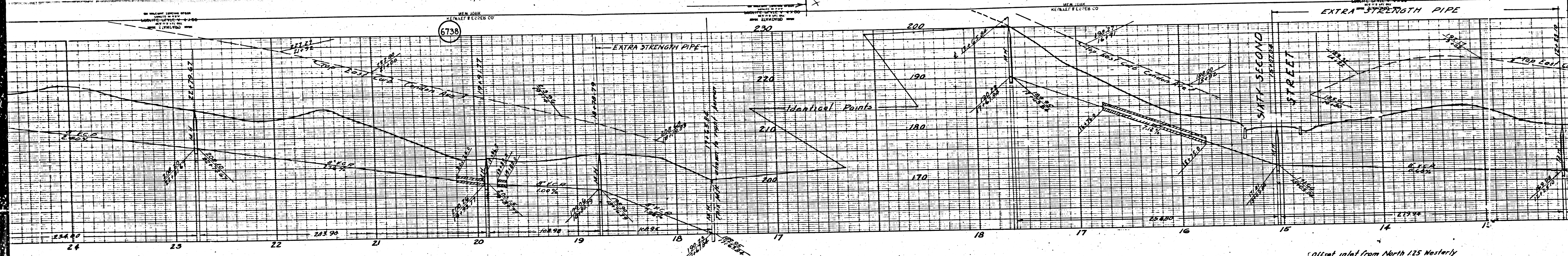
Identical Points

EXTRA STRENGTH PIPE

SIXTY SECOND STREET

STREET

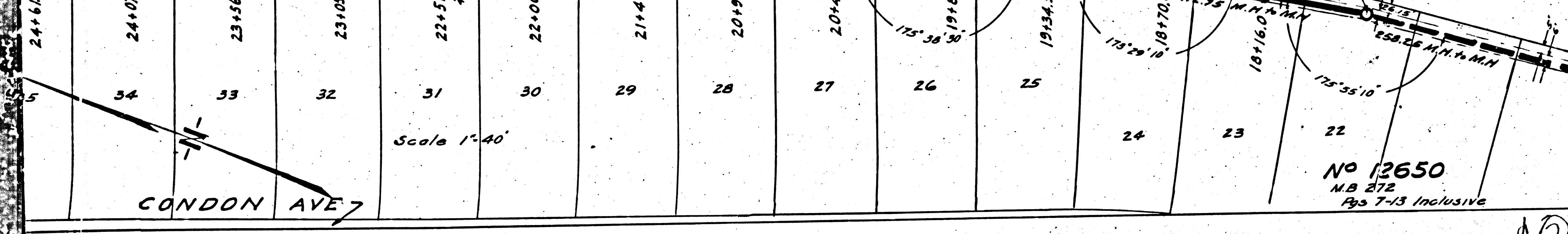
100 East



DERA PARK

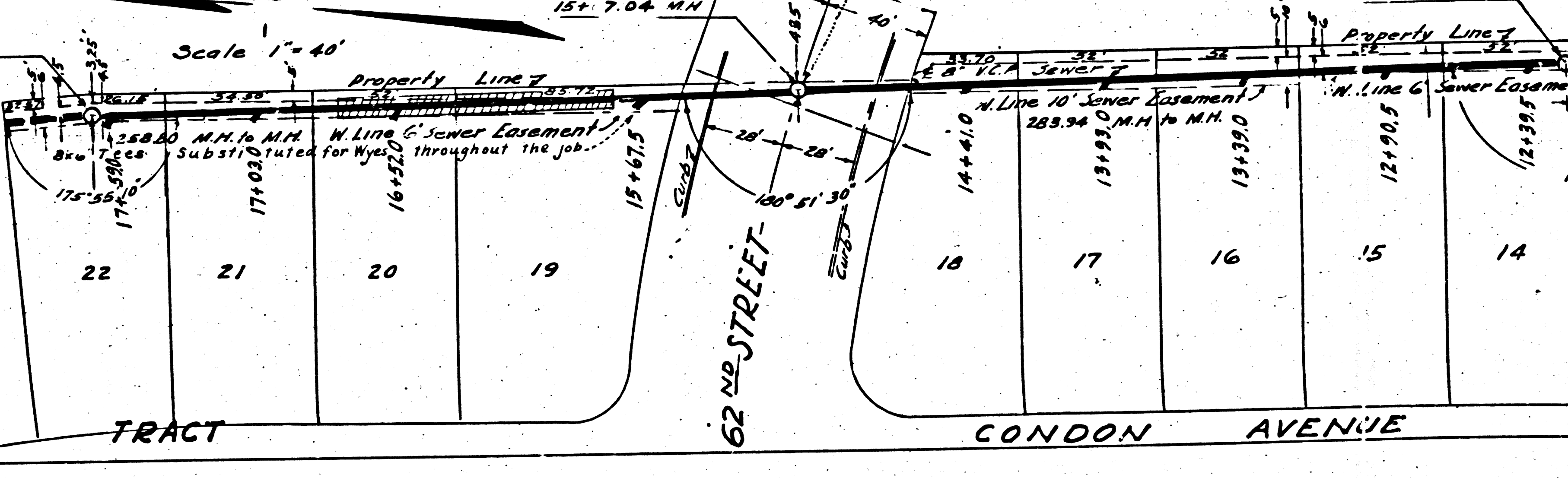
67 M.M.
125' Ely.

Property Line
N. Line of G' Sewer Easement



No 12650
M.B. 872
Pgs 7-13 Inclusive

Identical Points



TRACT

CONDON AVENUE

62nd STREET

Offset inlet from North 125 Westerly
Offset outlet from South 125 Easterly

DERA PARK PARKING LOT
12+98.10 M.M.

Property Line
E. Line of G' Sewer Easement

Property Line
N. Line of G' Sewer Easement

Property Line
N. Line of G' Sewer Easement

Property Line
N. Line of G' Sewer Easement

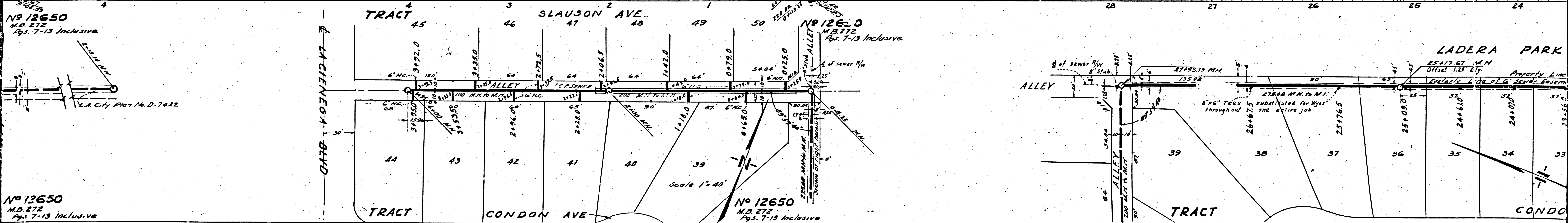
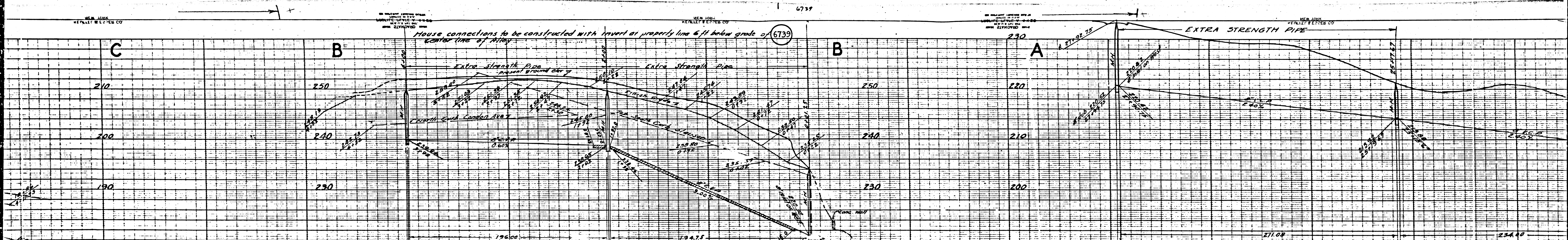
Property Line
N. Line of G' Sewer Easement

Property Line
N. Line of G' Sewer Easement

Property Line
N. Line of G' Sewer Easement

10

M6



No 12650
M.D. 272
Pgs. 7-13 Inclusive

No 12650
M.D. 272
Pgs. 7-13 Inclusive

No 12650
M.D. 272
Pgs. 7-13 Inclusive

No 12650
M.D. 272
Pgs. 7-13 Inclusive

LADERA PARK

CONDO