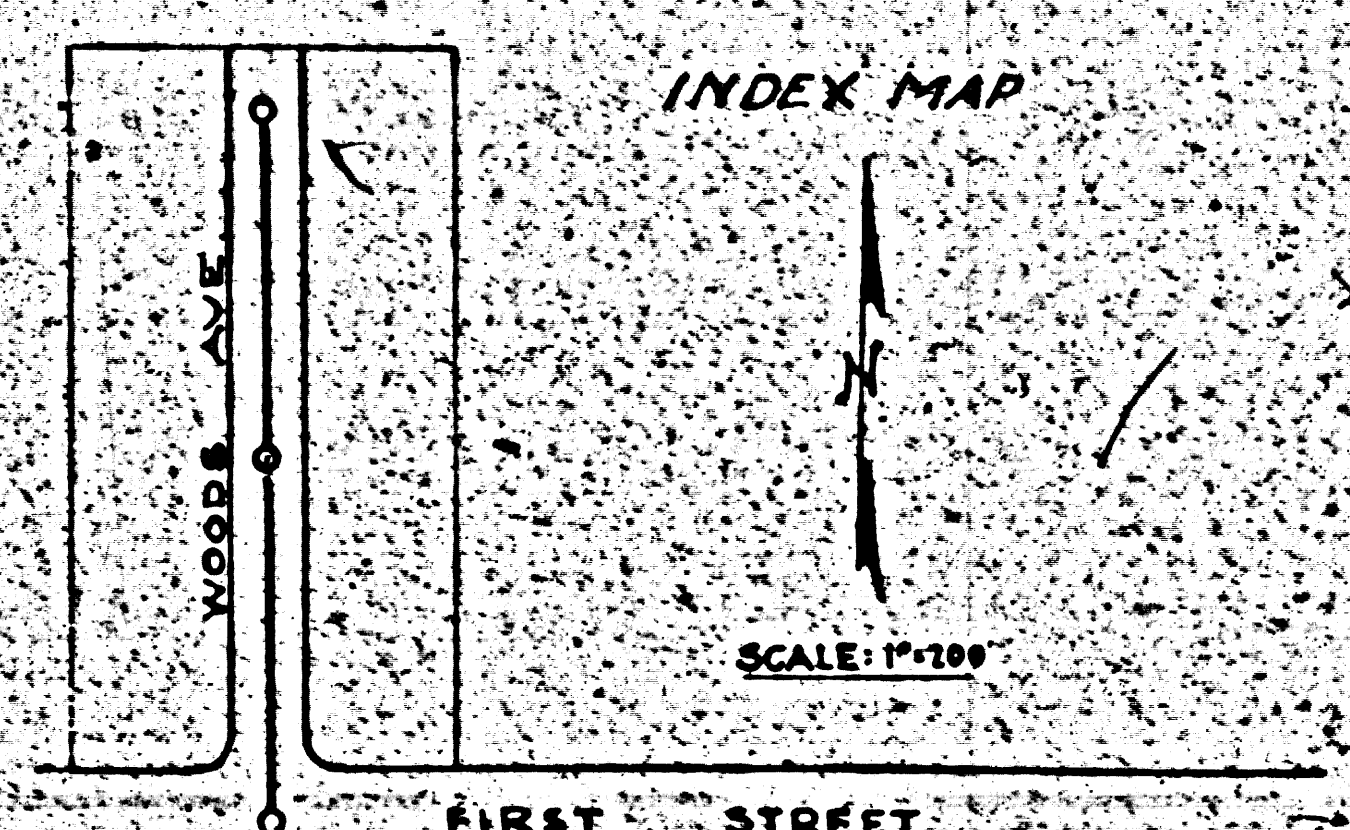
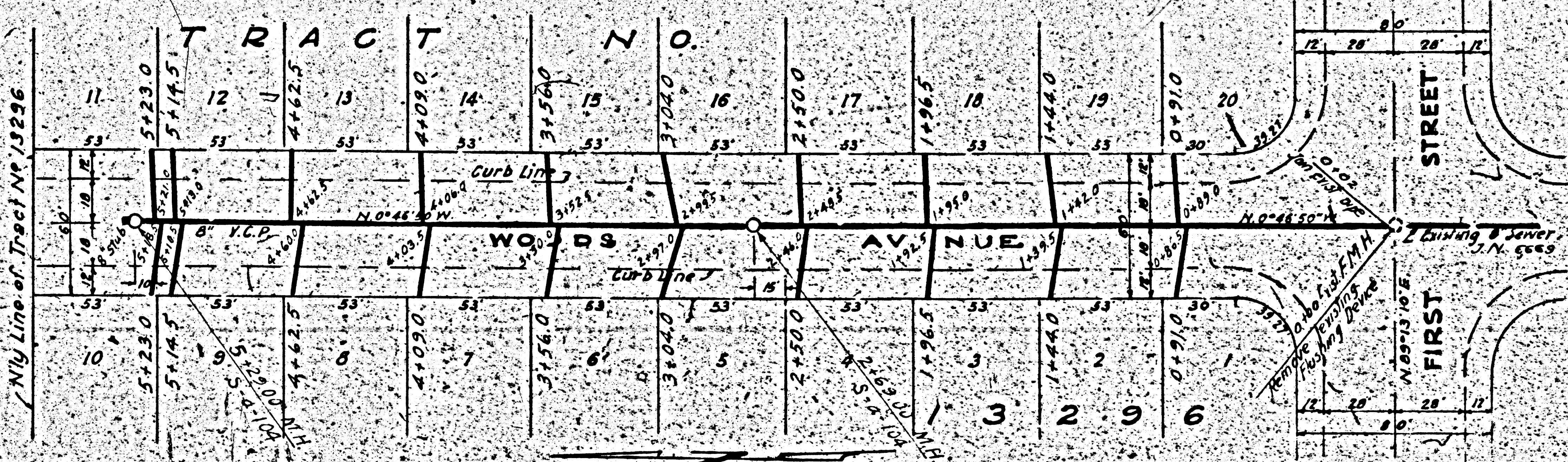


NOTES:
 Use L.A. County Standard Manholes S/A 104
 Use Standard Strength Pipe
 Use Cement Mortar for all Vitrified Clay Pipe Joints
 Resurface all trenches within paved areas
 to meet L.A. County Road Dept. Requirements
 House Connections to be constructed with
 in vertical property line 4' below curb grade
 Use "Just-Rite" Manhole Frames and Covers 9-a-90

All elevations are referred to L.A. County Bench Mark
 NP 71-701' Cross on half Southeast leg of Southern Calif.
 Edison Co. tower at SW corner of Tract No 7154 Elev 771.56



NOTES:
 Grades to
 be set
 at All Points
 to conform to a
 Elevation of
 This Drawing and
 Work shall be
 the County Engineer
 Before work
 in County Streets
 a deposit with the
 the Cost of Const

CHECKED BY
 OFF
 CIV

7/1/90