

6704
 8 M. Elev. 203.395
 S.W. Cor. 100' S. & Western Ave.
 L & T 2' S Curb Return

1. USE STANDARD MANHOLE FRAMES AND COVERS 5-a-116
 2. USE STANDARD STRENGTH PIPE
 3. USE CEMENT MORTAR FOR ALL VITRIFIED CLAY PIPE JOINTS
 4. CONSTRUCT HOUSE CONNECTIONS WITH INVERT AT PROPERTY LINE 8 FEET BELOW CURB GRADE, EXCEPT AS NOTED.
 5. ALL STRUCTURES SHALL BE BRICK SEWER STRUCTURES 5-a-104
 6. H.C. STATIONS SHOWN HEREON ALSO INDICATE LOCATION OF EXISTING "Y" BRANCHES.
- NO REPRESENTATIVE OF THE COUNTY ENGINEER WILL SURVEY OR LAY OUT ANY PORTION OF THE WORK.
 THE OWNER OR HIS AUTHORIZED REPRESENTATIVE SHALL FURNISH THE COUNTY ENGINEER WITH GRADE SHEETS AND STATIONS OF ALL HOUSE CONNECTIONS AND Y BRANCHES, AND SHALL PROVIDE STAKES FOR THEM AT THEIR PROPER LOCATIONS, WITH STATIONING PLAINLY MARKED. ANY CHANGE OF LOCATION SHALL BE REQUESTED IN WRITING BY THE OWNER OR HIS REPRESENTATIVE.
 NO REVISIONS SHALL BE MADE IN THESE PLANS WITHOUT APPROVAL OF THE COUNTY ENGINEER.

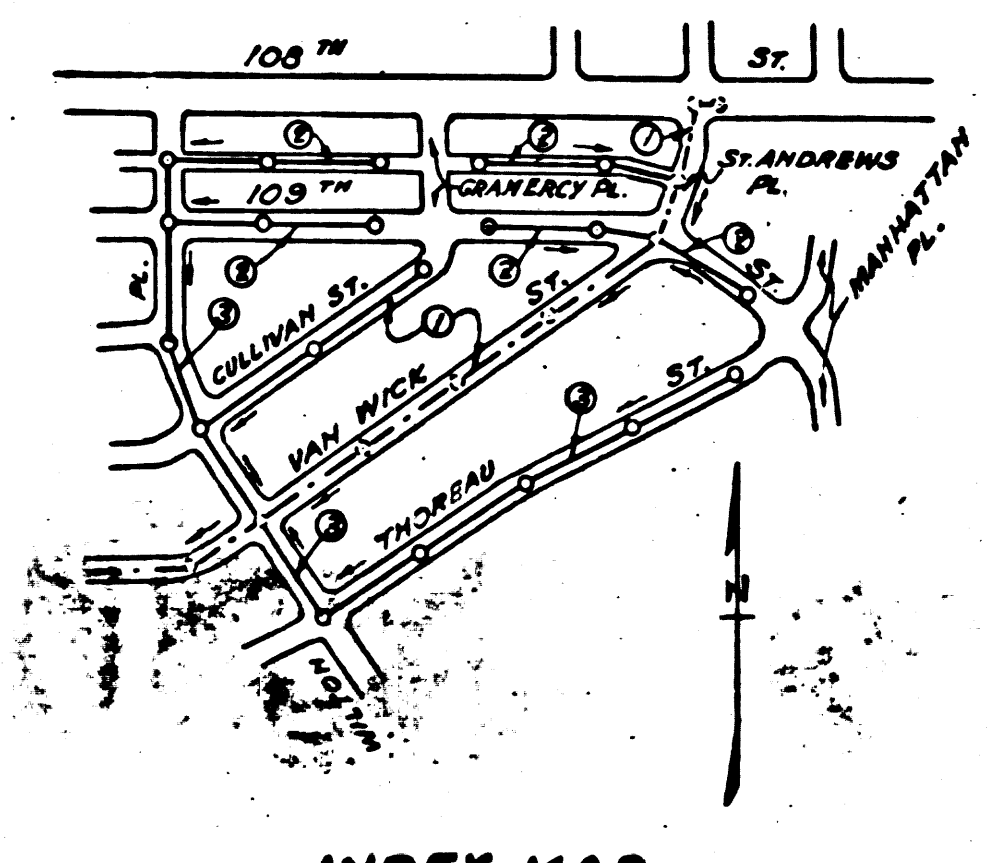
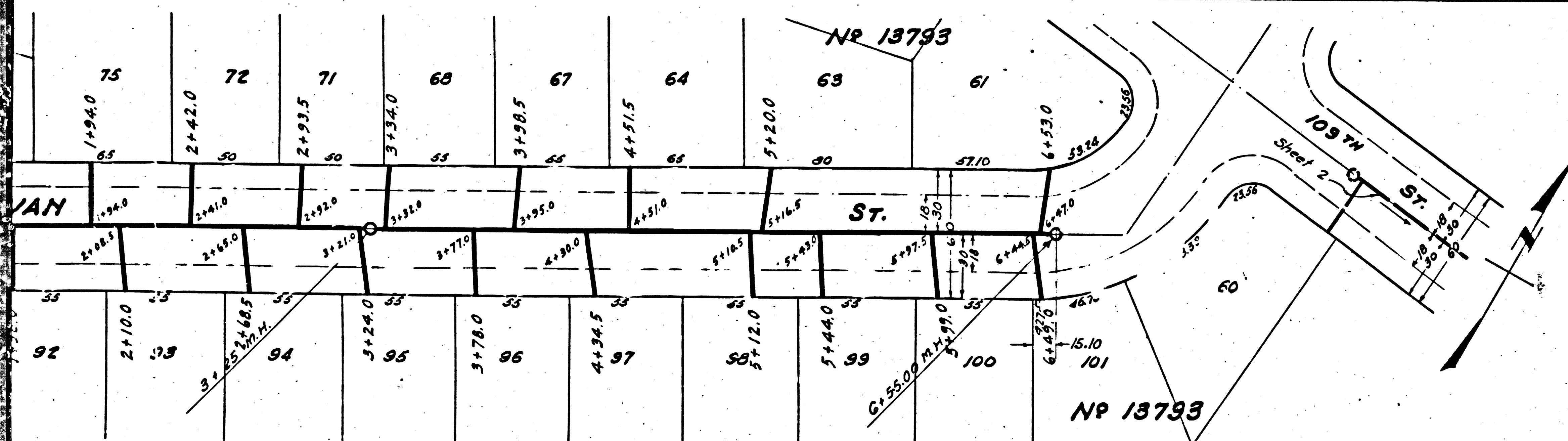
PROFILE, ALIGNMENT AND GRADE OF
SANITARY SEWERS
 TO BE CONSTRUCTED IN
CULLIVAN ST.
 BETWEEN 103RD ST. AND WILTON PLACE
ST. ANDREWS PL.
 BETWEEN 100TH ST. AND 103RD ST.
VAN WICK ST.
 BETWEEN 103RD ST. AND WESTERLY BOUNDARY OF TRACT NO. 13793
 PRIVATE CONTRACT NO. 345
 W.S. 26
 SHEET 1 OF 3 SHEETS
 JAN. 1946

DOUBLE SCALE

VERT. 1"=8'
 SCALE HORIZ. 1"=40'

PREPARED IN THE OFFICES OF
 THE SEABOARD ENGINEERING CO.

By: *Mark A. Holm*
 Reg. C.E. No. 2055



FOR LEGEND
 SEE PLAN NO. 5-a-64

NOTE:
 GRADES TO WHICH THIS IMPROVEMENT IS TO BE CONSTRUCTED ARE SHOWN ON PLANS AND PROFILES.
 GRADE POINTS FOR TOP OF CURB, CENTER LINE OF STREET OR CENTER LINE OF ALLEY ARE SHOWN BY CIRCLES
 ON PROFILES. AT ALL POINTS BETWEEN DESIGNATED POINTS THE GRADE SHALL BE ESTABLISHED SO AS
 TO CONFORM TO A STRAIGHT LINE DRAWN BETWEEN SAID DESIGNATED POINTS.
 ELEVATIONS ARE IN FEET ABOVE U.S.S. DATUM OR MEAN SEA LEVEL.
 THIS DRAWING AND THE DATA HEREON ARE HEREBY MADE A PART OF THE SPECIFICATIONS.
 WORK SHALL BE CONSTRUCTED ACCORDING TO SPECIFICATIONS ON FILE IN THE OFFICE OF THE
 COUNTY ENGINEER AND SHALL BE PROSECUTED ONLY IN THE PRESENCE OF THE COUNTY ENGINEER.
 BEFORE WORK CAN BE STARTED, THE CONTRACTOR MUST OBTAIN A PERMIT TO EXCAVATE IN
 COUNTY STREETS FROM THE L.A. COUNTY ROAD DEPT., 1104 HALL OF RECORDS AND MAKE A DEPOSIT
 WITH THE COUNTY ENGINEER, 700 UNION LEAGUE BUILDING, SUFFICIENT TO COVER THE COST OF
 CONSTRUCTION AND RECORD PLANS.

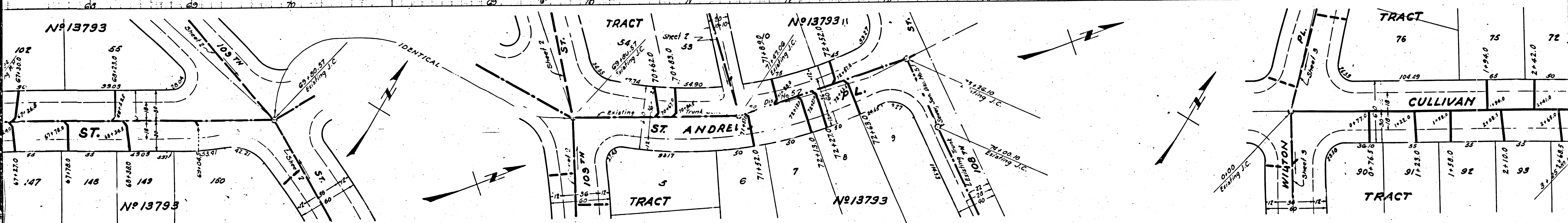
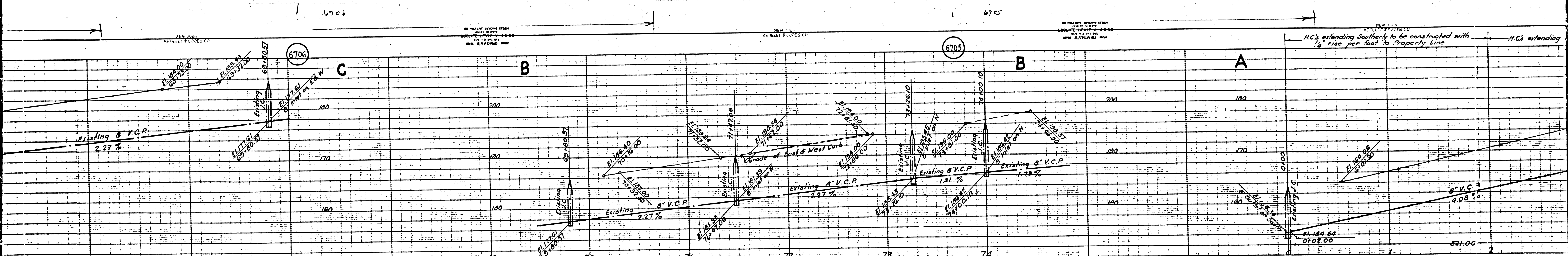
COUNTY OF LOS ANGELES, CALIFORNIA
 APPROVED: *Alfred J. Jones*
 COUNTY ENGINEER
 APPROVED: *C. R. Conner*
 ASST. CHIEF ENGINEER OF COUNTY
 SANITATION DISTRICT NO. 5



CHECKED BY: *aur* 5/14/1946
 OFFICE OF COUNTY ENGINEER, R. M. 6330

Final Ck 7/7/1946

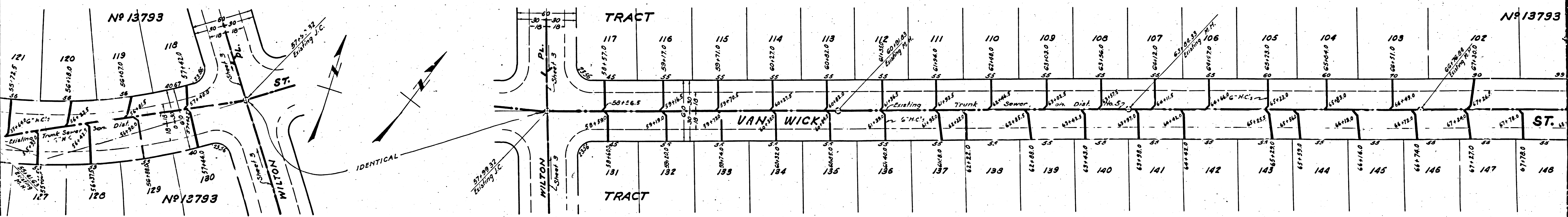
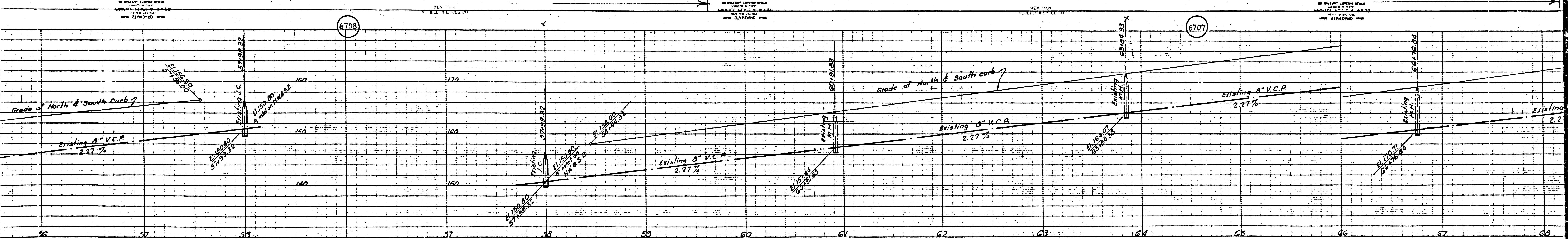
①



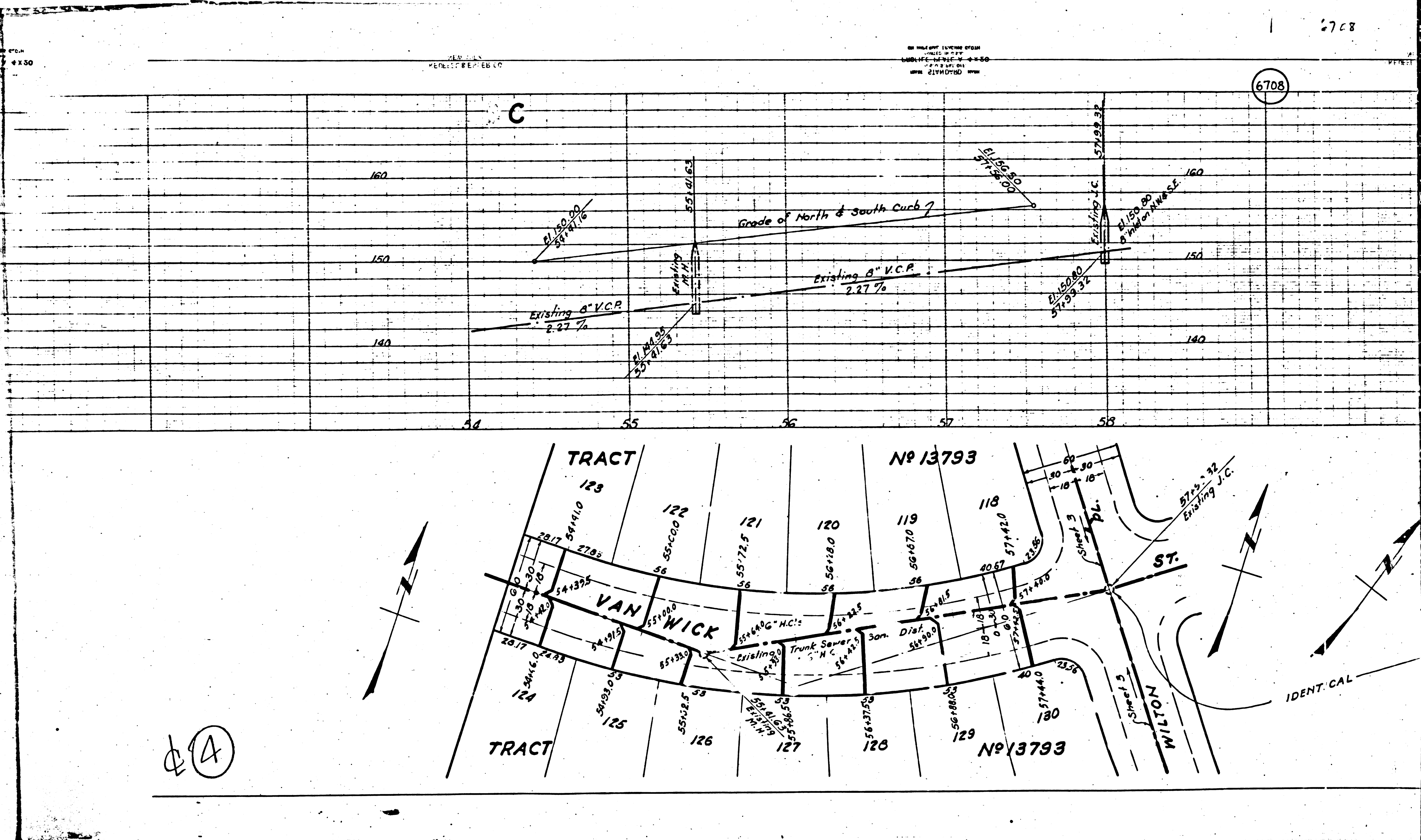
②

6708

6707



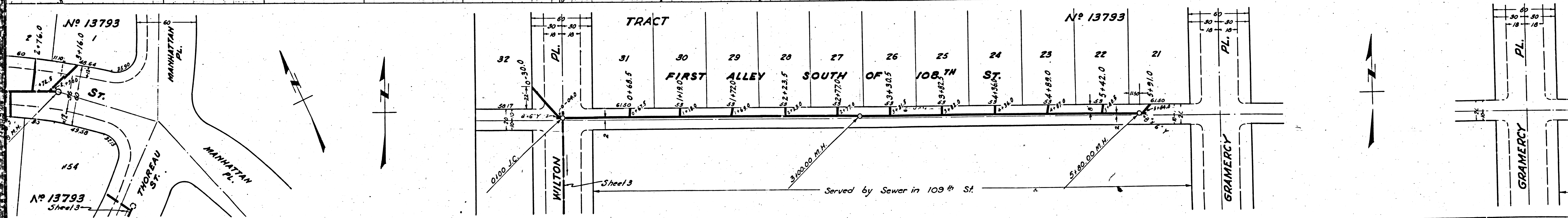
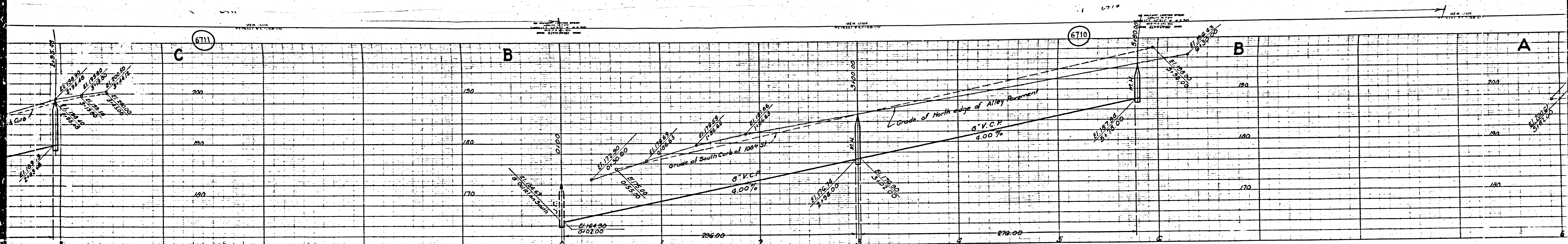
③



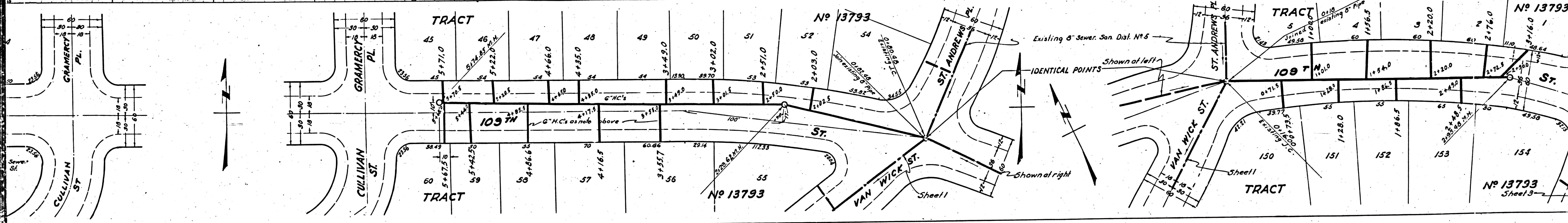
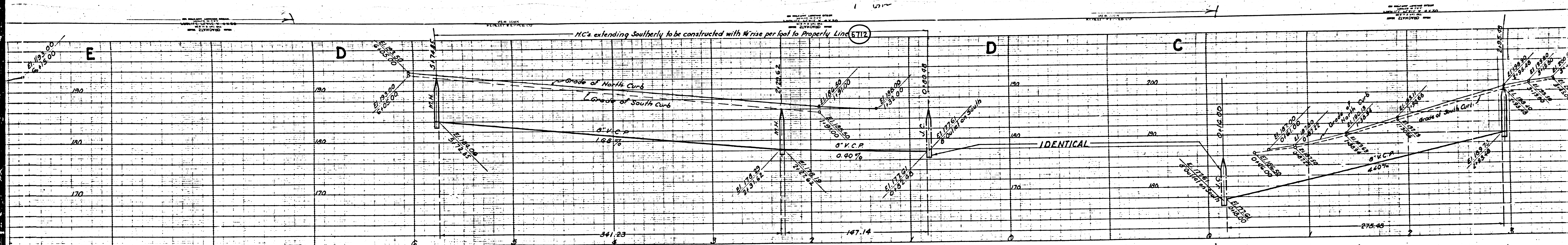
6708

C

4



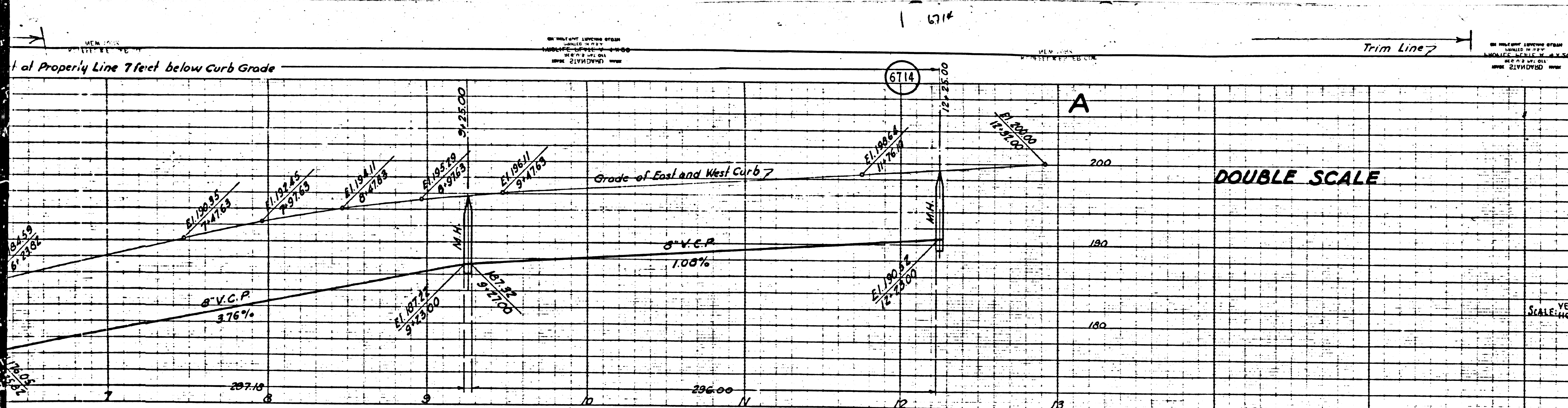
②



③

M8

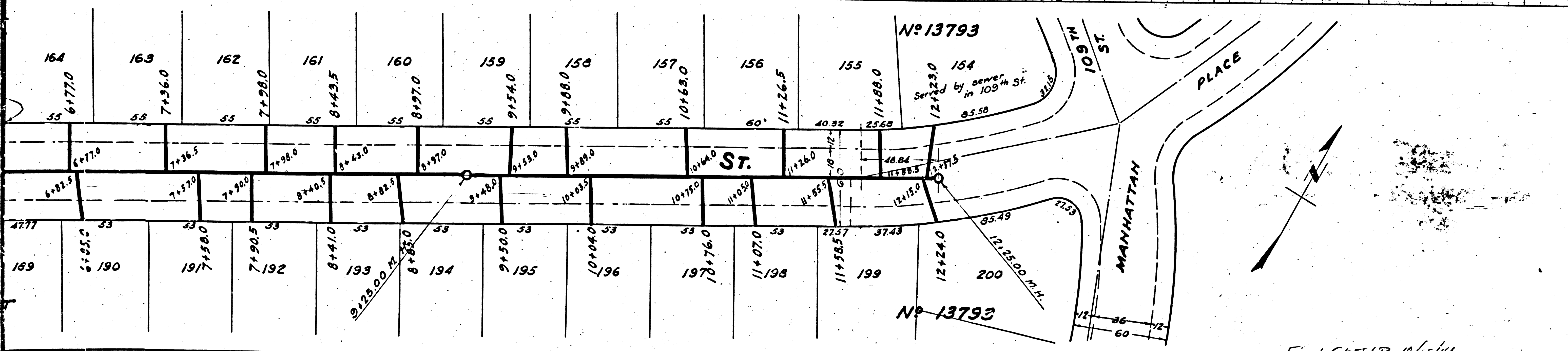
M8



PROFILE ALIGNMENT AND GRADE OF
SANITARY SEWERS
 TO BE CONSTRUCTED IN
THOREAU ST.
 BETWEEN 109TH ST. AND WILTON PL.
WILTON PL.
 BETWEEN THOREAU ST. AND FIRST ALLEY NORTH OF 109TH ST.

PRIVATE CONTRACT NO. 345
 WS 26
 SHEET 5 OF 4 SHEETS
 JAN. 1946

PREPARED IN THE OFFICES OF
 THE SEABOARD ENGINEERING CO.
 BY *Harold A. Robie*
 REG. CE. NO. 2059



FOR LEGEND
SEE PLAN NO. 80-64

FOR CONSTRUCTION NOTES SEE SHEET 1
 COUNTY OF LOS ANGELES, CALIFORNIA

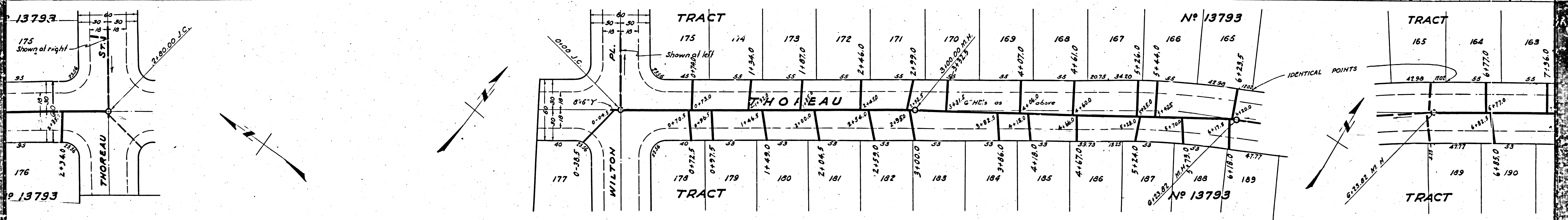
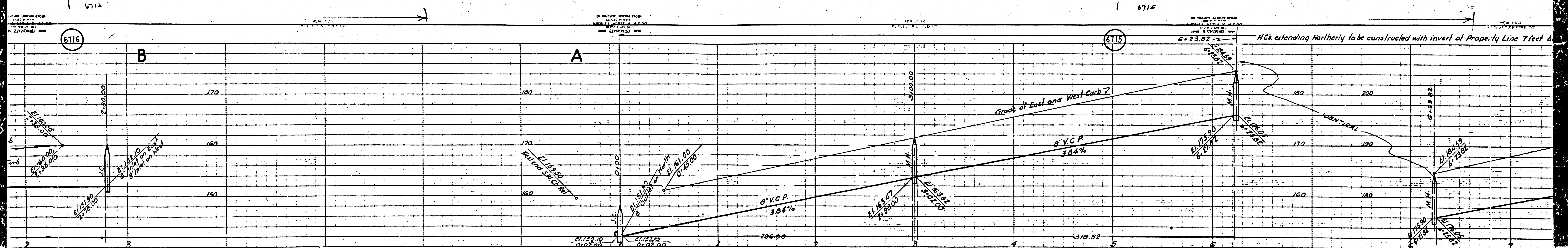
APPROVED *Alfred Jones*
 COUNTY ENGINEER
 APPROVED *C.R. Smith*
 ASST. CHIEF ENGINEER OF COUNTY
 SANITATION DISTRICT NO. 5



CHECKED BY *Autry* 5/18/46
 OFFICE OF COUNTY ENGINEER REG. CE. NO. 630

50 345

Final C&G 10/18/46
 Trim Line

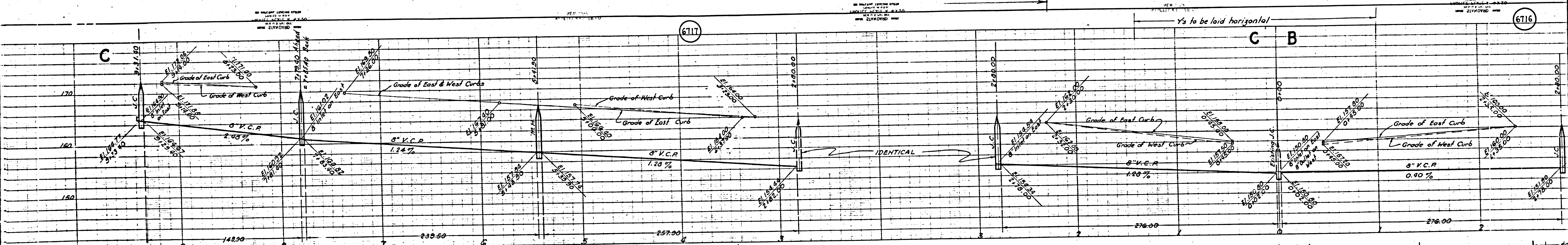


E (2)

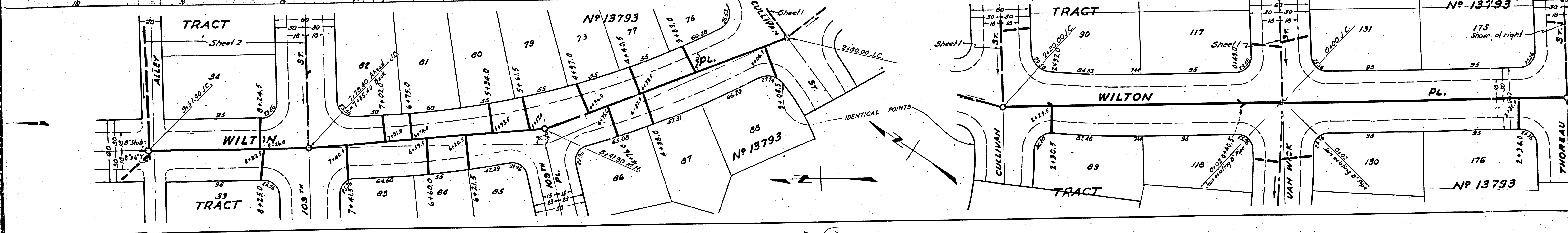
6117

6714

6116



Y's to be laid horizontal



6116