

B.M. WESTERN AVE. & 108TH ST. ELEV. 205.83
 LEAD STACK CENTER CURB RETURN NW COR.

NOTE:
 (1) USE SPECIAL MANHOLE FRAMES AND COVERS, 30x30x6 AS NOTED.
 (2) USE STANDARD STRENGTH PIPE EXCEPT AS NOTED.
 (3) RESURFACE ALL TRENCH WITHIN PAVED AREA TO MEET LOS ANGELES COUNTY ROAD DEPARTMENT REQUIREMENTS.
 (4) CONSTRUCT HOUSE CONNECTIONS AS PER STANDARD SPECIFICATIONS WITH INVERT AT PROPERTY LINE TO ELEVATIONS SHOWN ON THE PLANS.
 (5) ENCASE FOUR FEET OF SEWER AT POINTS OF INTERFERENCE WITH POLES AS PER PLAN NS3-B-6.
 (6) USE CEMENT MORTAR FOR ALL V.C.P. JOINTS.

DOUBLE SCALE

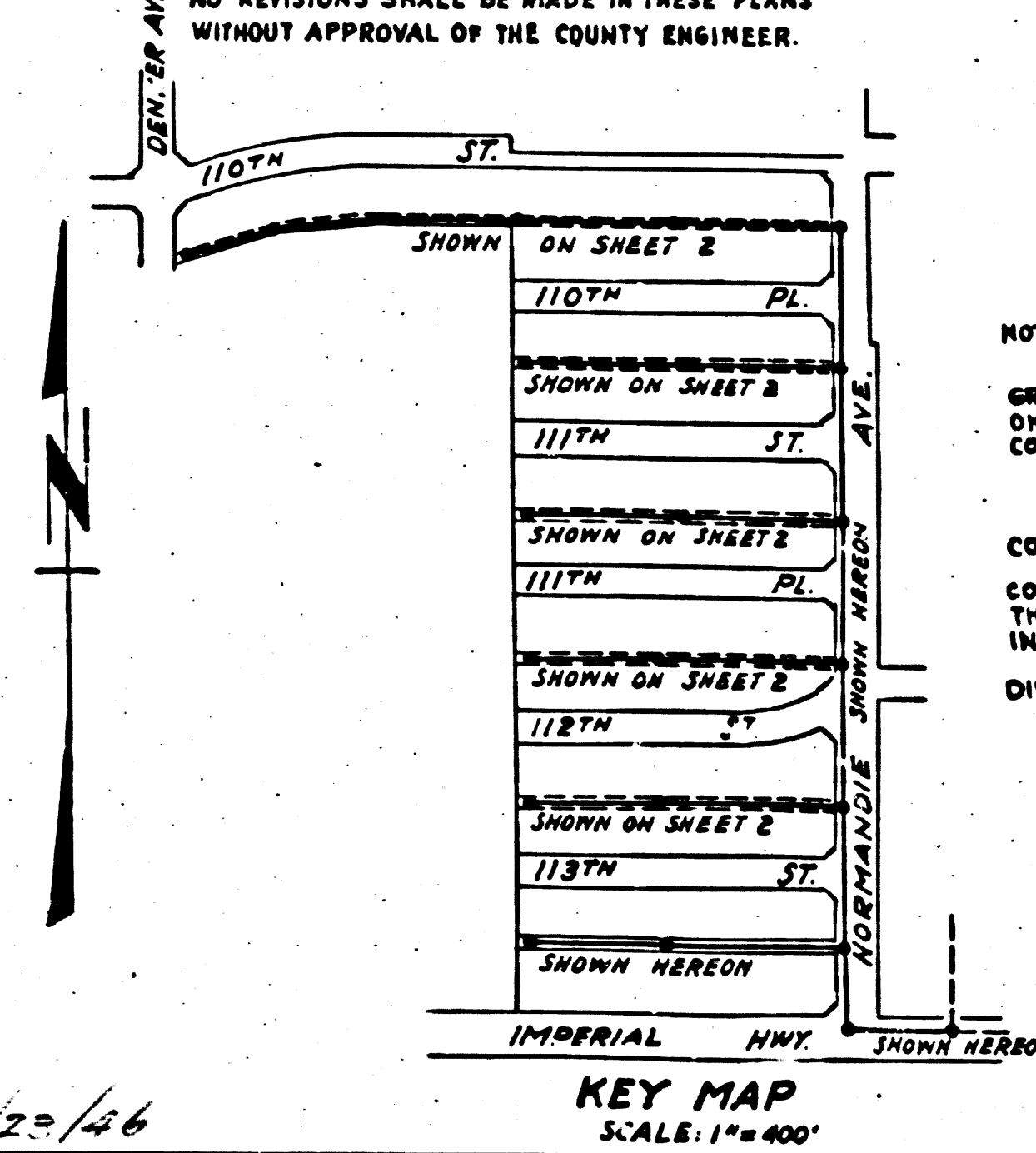
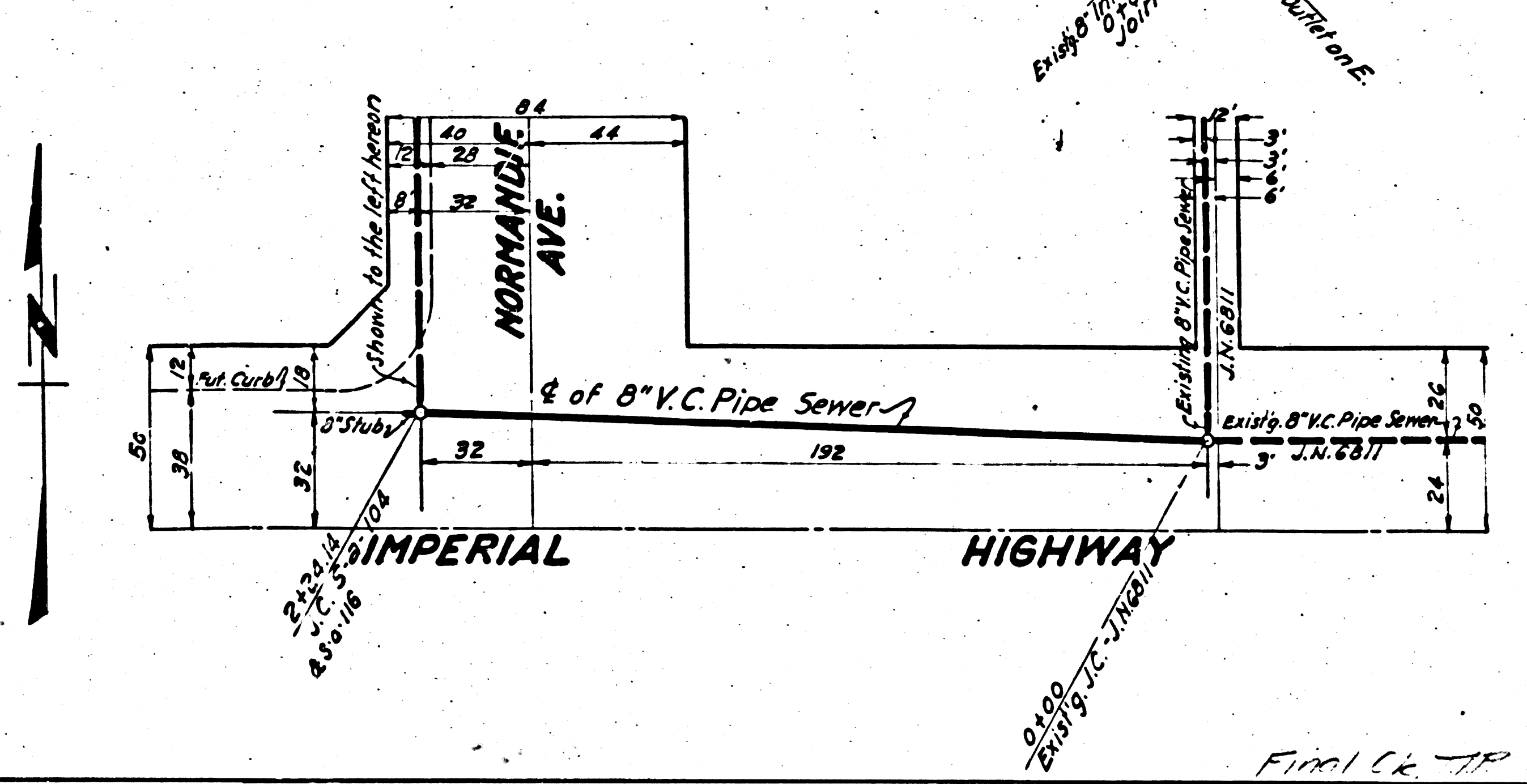
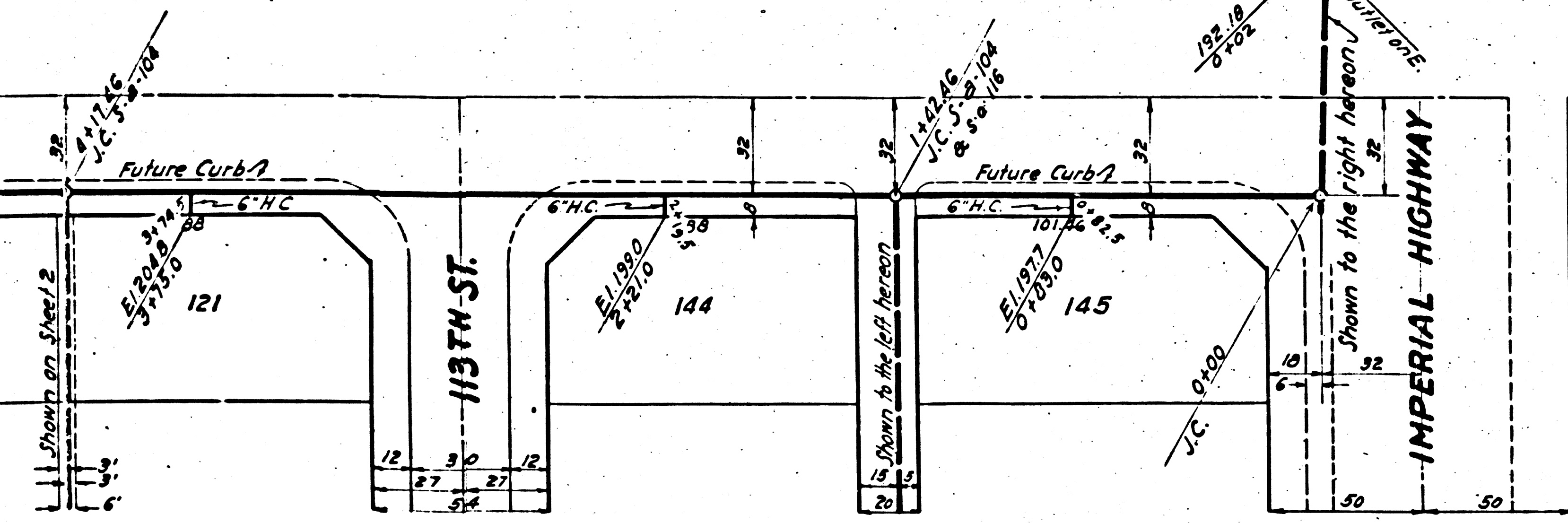
NOTE:
 NO REPRESENTATIVE OF THE COUNTY ENGINEER WILL SURVEY OR LAY OUT ANY PORTION OF THE WORK. THE OWNER OR HIS AUTHORIZED REPRESENTATIVE SHALL FURNISH THE COUNTY ENGINEER WITH GRADE SHEETS AND STATIONS OF ALL HOUSE CONNECTIONS AND Y BRANCHES, AND SHALL PROVIDE STAKES FOR THEM AT THEIR PROPER LOCATIONS WITH STATION PLANNED THEREON. ANY CHANGE IN LOCATION SHALL BE REQUESTED IN WRITING BY THE OWNER OR HIS REPRESENTATIVE. SEE NOTE ON SHEET 2 REGARDING OPTIONAL CHIMNEYS. NO REVISIONS SHALL BE MADE IN THESE PLANS WITHOUT APPROVAL OF THE COUNTY ENGINEER.

PROFILE ALIGNMENT AND GRADE OF
SANITARY SEWERS
 TO BE CONSTRUCTED IN
IMPERIAL HIGHWAY
 BETWEEN ALLEY EAST OF NORMANDIE AVE. AND NORMANDIE AVE.
 BETWEEN IMPERIAL HWY. AND 113TH ST.
ALLEY NORTH OF IMPERIAL HIGHWAY
 BETWEEN NORMANDIE AVE. AND 588 FT. WEST OF NORMANDIE AVE.
 IN TRACT NO. 13651, M.B. 276-9-4

PRIVATE CONTRACT NO. 354
 W.S. 28
 SHEET 1 OF 2 SHEETS

SCALE: VERT. 1"=4'
 HORIZ. 1"=40'

PREPARED IN THE OFFICES OF



HAROLD M. TEGART

BY: *Harold M. Tegart*
 REG. C.E. N-42151

FOR LEGEND.
 SEE PLAN NO. S-D-64.

NOTE:
 GRADES TO WHICH THIS IMPROVEMENT IS TO BE CONSTRUCTED ARE SHOWN ON PLANS AND PROFILE GRADE POINTS FOR TOP OF CURB, CENTERLINE OF STREET OR CENTERLINE OF ALLEY ARE SHOWN ON PROFILES AT ALL POINTS BETWEEN DESIGNATED POINTS THE GRADE SHALL BE ESTABLISHED TO ADHERE TO A STRAIGHT LINE DRAWN BETWEEN SAID DESIGNATED POINTS.
 ELEVATIONS ARE IN FEET ABOVE U.S.S. DATUM OR MEAN SEA LEVEL.
 THIS DRAWING AND THE DATA HEREON ARE HEREBY MADE A PART OF THE SPECIFICATIONS. WORK SHALL BE CONSTRUCTED AND SHALL BE PROSECUTED ONLY IN THE PRESENCE OF THE COUNTY ENGINEER. BEFORE WORK CAN BE STARTED THE CONTRACTOR MUST OBTAIN A PERMIT TO OCCUPY THE COUNTY STREETS FROM THE COUNTY ROAD DEPT. FOR DEPOSIT WITH THE COUNTY ENGINEER, 100 UNION LEAGUE BUILDING SUFFICIENT TO COVER THE COST OF CONSTRUCTION INSPECTION AND RECORDED PLANS.
 IF WORK IS TO BE DONE IN A STATE HIGHWAY A PERMIT MUST BE OBTAINED FROM THE STATE OF CALIFORNIA DIVISION OF HIGHWAYS, 808 STATE BUILDING, AFTER MAKING THE DEPOSIT WITH THE COUNTY ENGINEER.

APPROVED: *Alfred J. ...*
 COUNTY ENGINEER

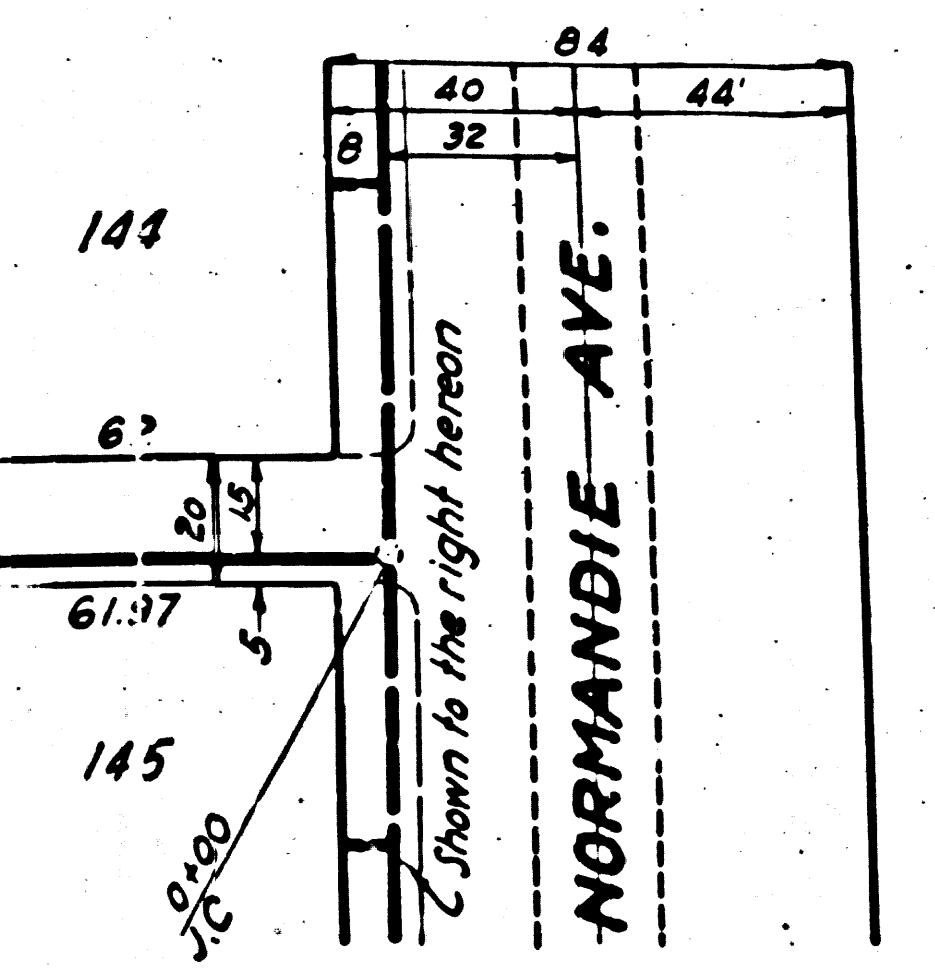
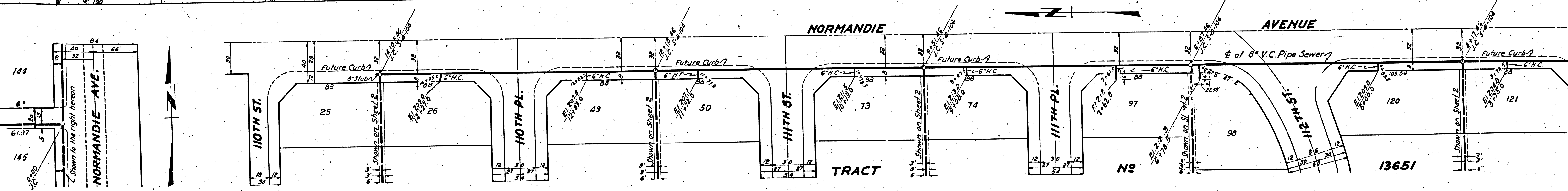
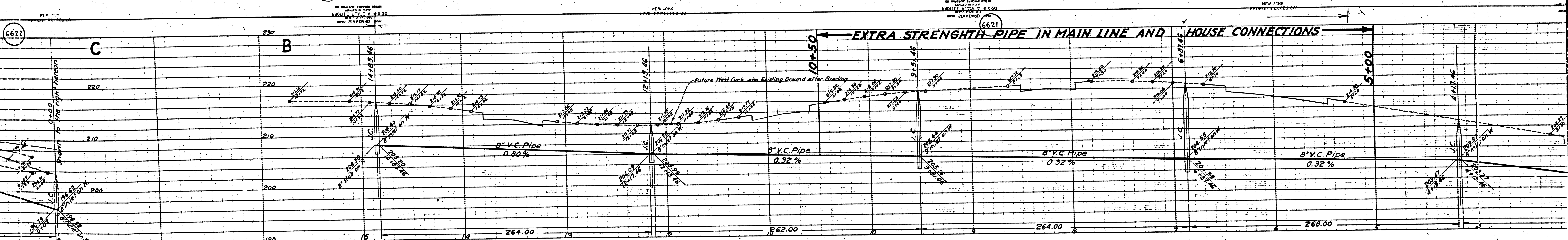
APPROVED: *...*
 CHIEF ENGINEER OF COUNTY SANITATION DISTRICT NO. 2

CHECKED BY: *H. L. ...*
 OFFICE OF COUNTY ENGINEER, 850 C.E. N-42151

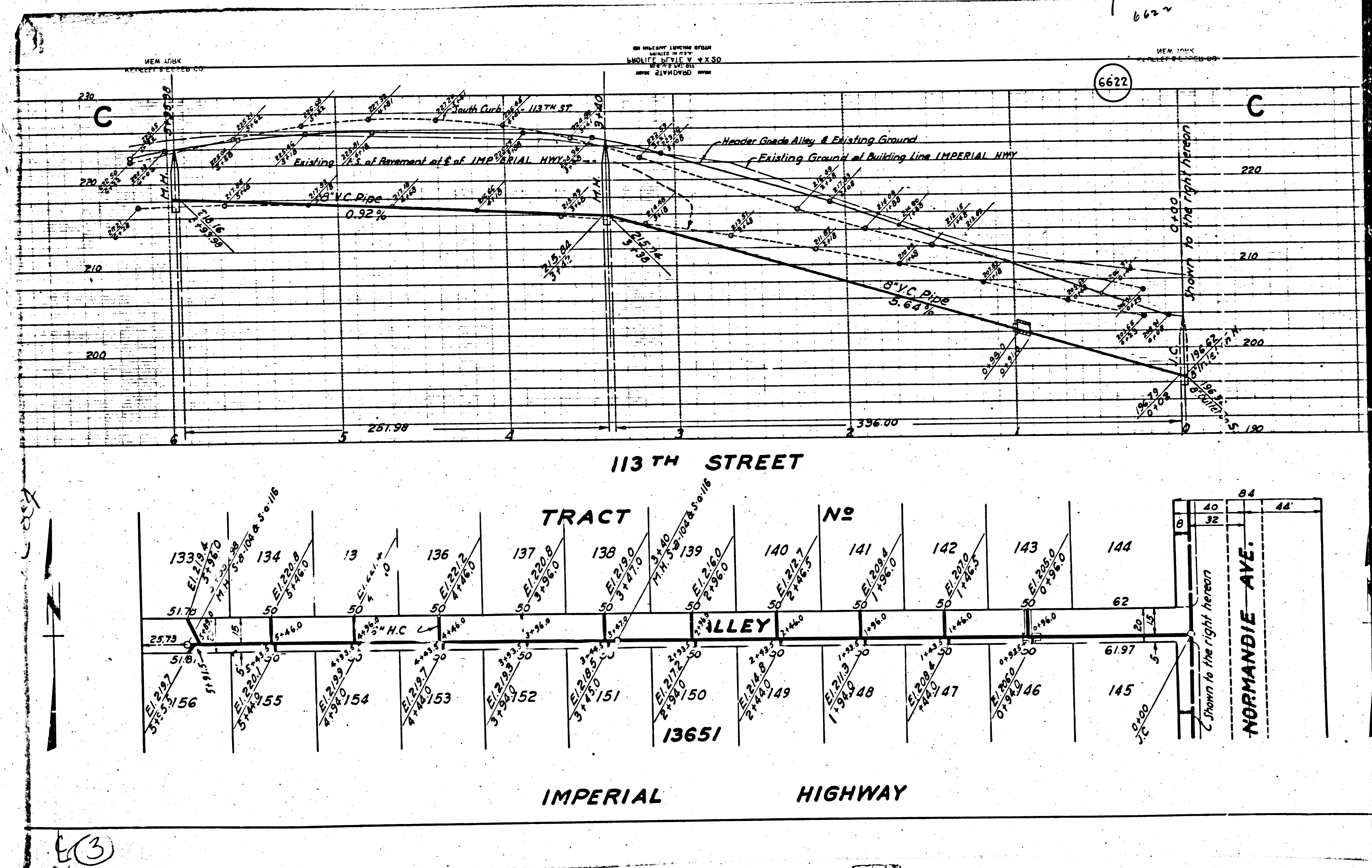
E D

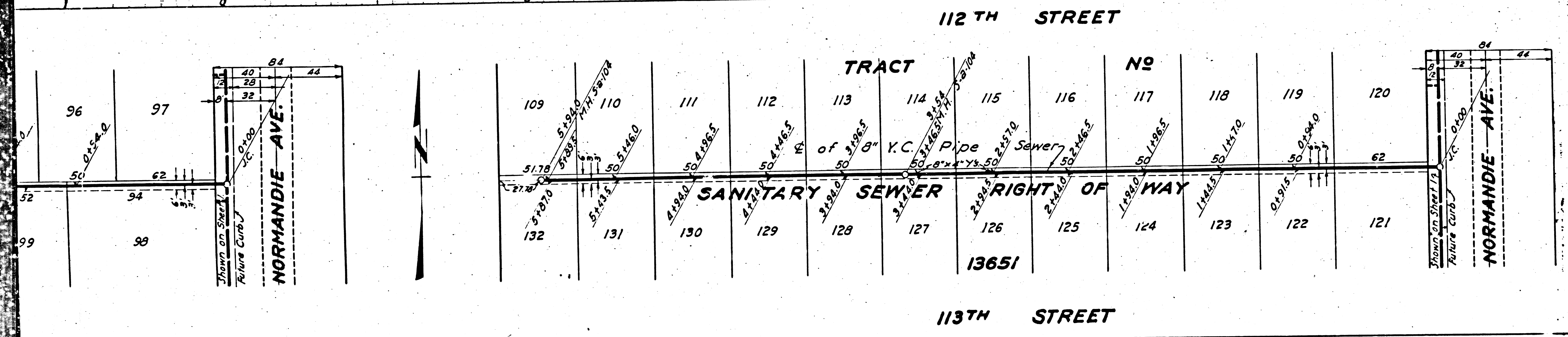
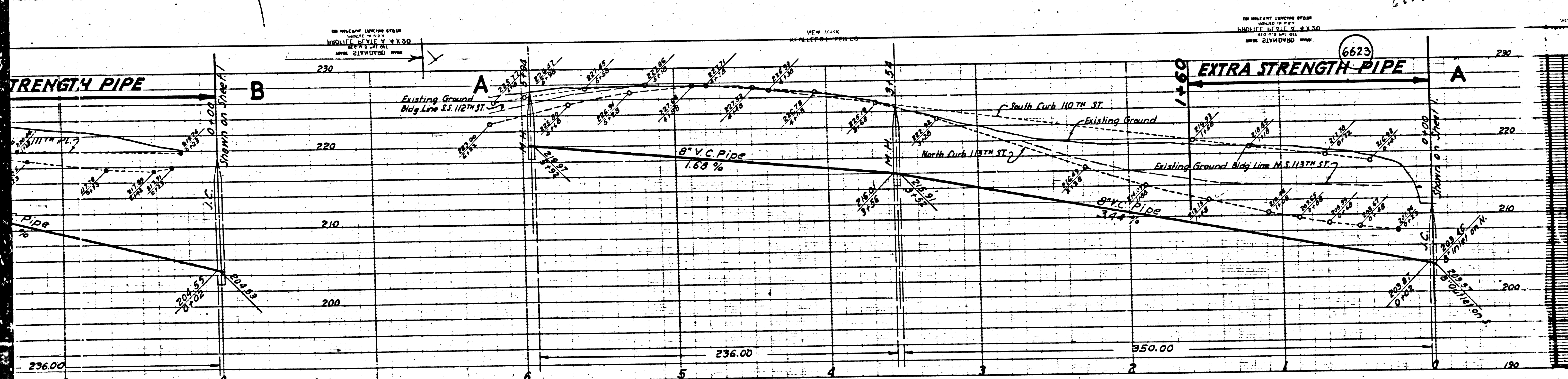
6622

6621



EQ





- B.M. WESTERN AVE. & 108TH ST. ELEV. 205.83
 LEAD & TACK CENTER CURB RETURN N.W. COR.
- USE SPECIAL MANHOLE FRAMES AND COVERS 3'x10'S
 - USE STANDARD STRENGTH PIPE (EXCEPT AS NOTED)
 - RESURFACE ALL TRENCH WIDTH PAVED AREAS TO MEET LOS ANGELES COUNTY ROAD DEPARTMENT REQUIREMENTS.
 - CONSTRUCT HOUSE CONNECTIONS AS PER STANDARD SPECIFICATIONS WITH INVERT AT PROPERTY LINE TO ELEVATIONS SHOWN ON THE PLANS.
 - ENCASE FOUR FEET OF SEWER AT POINTS OF INTERFERENCE WITH POLES AS PER PLAN HY-3-2-6.
 - USE CEMENT MORTAR FOR ALL V.C.P. JOINTS.

DOUBLE SCALE

NOTE: I AM REPRESENTATIVE OF THE COUNTY ENGINEER WHILE SURVEY OR LAY-OUT ANY PORTION OF THE WORK.

THE OWNER OR HIS AUTHORIZED REPRESENTATIVE SHALL FURNISH THE COUNTY ENGINEER WITH GRADE SHEETS AND STATIONS OF ALL HOUSE CONNECTIONS AND BRANCHES AND SHALL FRAME STAKES FOR THEM AT THEIR PROPER LOCATIONS WITH STATIONS PLAINLY MARKED. ANY CHANGE OF LOCATION SHALL BE REQUESTED IN WRITING BY THE OWNER OR HIS REPRESENTATIVE.

THE CONTRACTOR MAY AT HIS OPTION AND WITHOUT ADDITIONAL COMPENSATION CONSTRUCT CHIMNEYS AS PER S-2-B WHERE THE DEPTH OF THE SEWER MAIN EXCEEDS 12 FT. IN CASE OF SUCH CHOICE HE SHALL NOTIFY THE OWNER THEREOF WHO WILL CAUSE STAKES AND GRADE SHEETS TO BE PROVIDED THEREFOR AS ABOVE SPECIFIED.

NO REVISIONS SHALL BE MADE IN THESE PLANS WITHOUT APPROVAL OF THE COUNTY ENGINEER.

PROFILE ALIGNMENT AND GRADE OF
SANITARY SEWERS
 TO BE CONSTRUCTED IN
SANITARY SEWER RIGHTS OF WAY
 IN TRACT NO. 13651, M.B. 275-8-4

PRIVATE CONTRACT NO. 354
 W.S. 26
 SHEET 2 OF 2 SHEETS.

PREPARED IN THE OFFICES OF:
 HAROLD M. TEGART
 BY: *Harold M. Tegart*
 REG. C.E. NO. 215

FOR LEGEND
 SEE PLAN NO. S-2-64.

NOTE: GRADES TO WHICH THIS IMPROVEMENT IS TO BE CONSTRUCTED ARE SHOWN ON PLANS AND PROFILE. GRADE POINTS FOR TOP OF CURB, CENTER LINE OF STREET OR CENTERLINE OF ALLEY ARE SHOWN BY CURBS OR PROFILES AT ALL POINTS BETWEEN DESIGNATED POINTS THE GRADE SHALL BE ESTABLISHED SO AS TO CONFORM TO A STRAIGHT LINE DRAWN BETWEEN SAID DESIGNATED POINTS. ELEVATIONS ARE IN FEET ABOVE U.S.C. DATUM OR MEAN SEA LEVEL.

THIS DRAWING AND THE DATA HEREON ARE HEREBY MADE A PART OF THE SPECIFICATIONS. THE WORK SHALL BE CONSTRUCTED ACCORDING TO SPECIFICATIONS ON FILE IN THE OFFICE OF THE COUNTY ENGINEER AND SHALL BE PROSECUTED ONLY IN THE PRESENCE OF THE COUNTY ENGINEER. BEFORE WORK CAN BE STARTED THE CONTRACTOR MUST OBTAIN A PERMIT TO EXCAVATE IN COUNTY STREETS FROM THE L.A. COUNTY ROAD DEPT., 104 HALL OF RECORDS, AND PAY A DEPOSIT WITH THE COUNTY ENGINEER, 200 UNION LEAGUE BUILDING, SUFFICIENT TO COVER THE COST OF CONSTRUCTION INSPECTION AND RECORD PLANS.

IF WORK IS TO BE DONE IN A STATE HIGHWAY PERMIT MUST BE OBTAINED FROM THE STATE OF CALIFORNIA DIVISION OF HIGHWAYS, 300 STATE BUILDING, AFTER MAKING THE DEPOSIT WITH THE COUNTY ENGINEER.

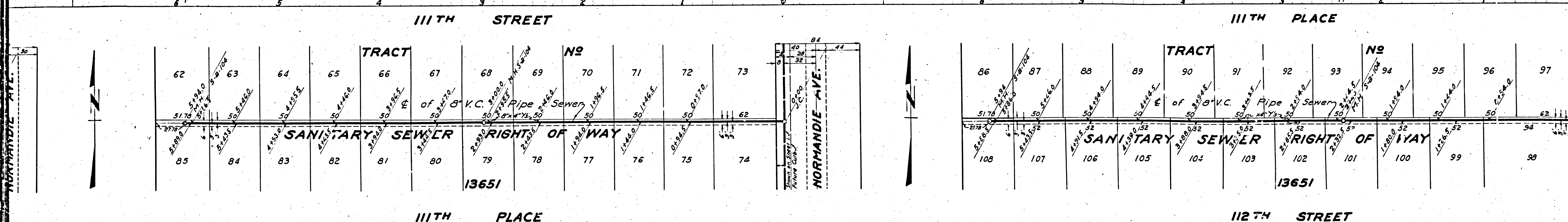
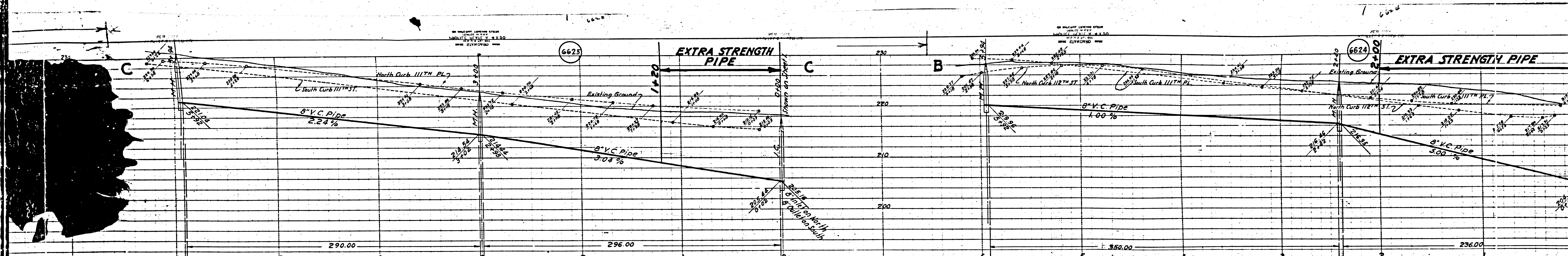
APPROVED: *Alfred J. Jones*
 COUNTY ENGINEER

APPROVED: *[Signature]*
 CHIEF ENGINEER COUNTY
 SANITARY DISTRICT NO. 8

CHECKED BY: *[Signature]*
 CHIEF ENGINEER COUNTY
 SANITARY DISTRICT NO. 8

FURNISH CK 717 9/23/26

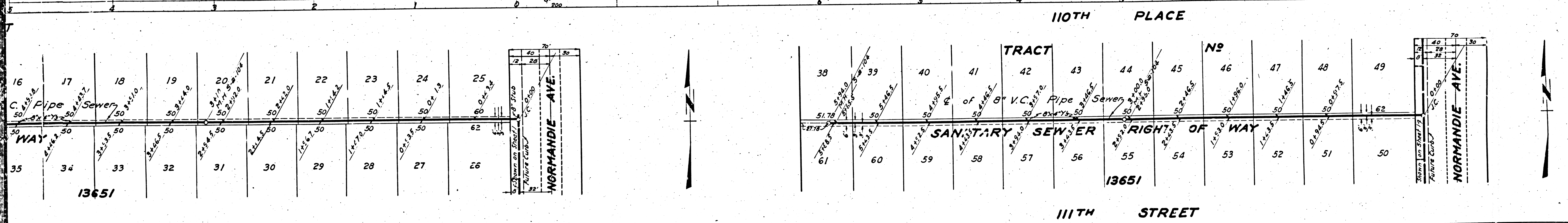
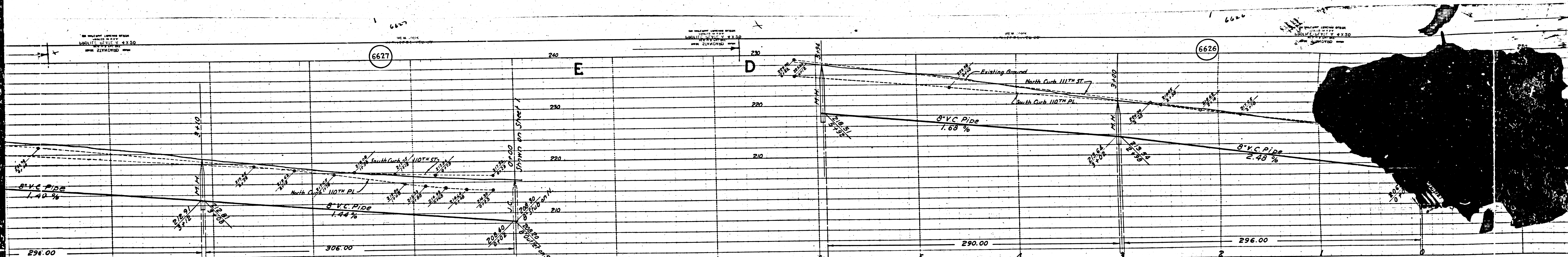
①



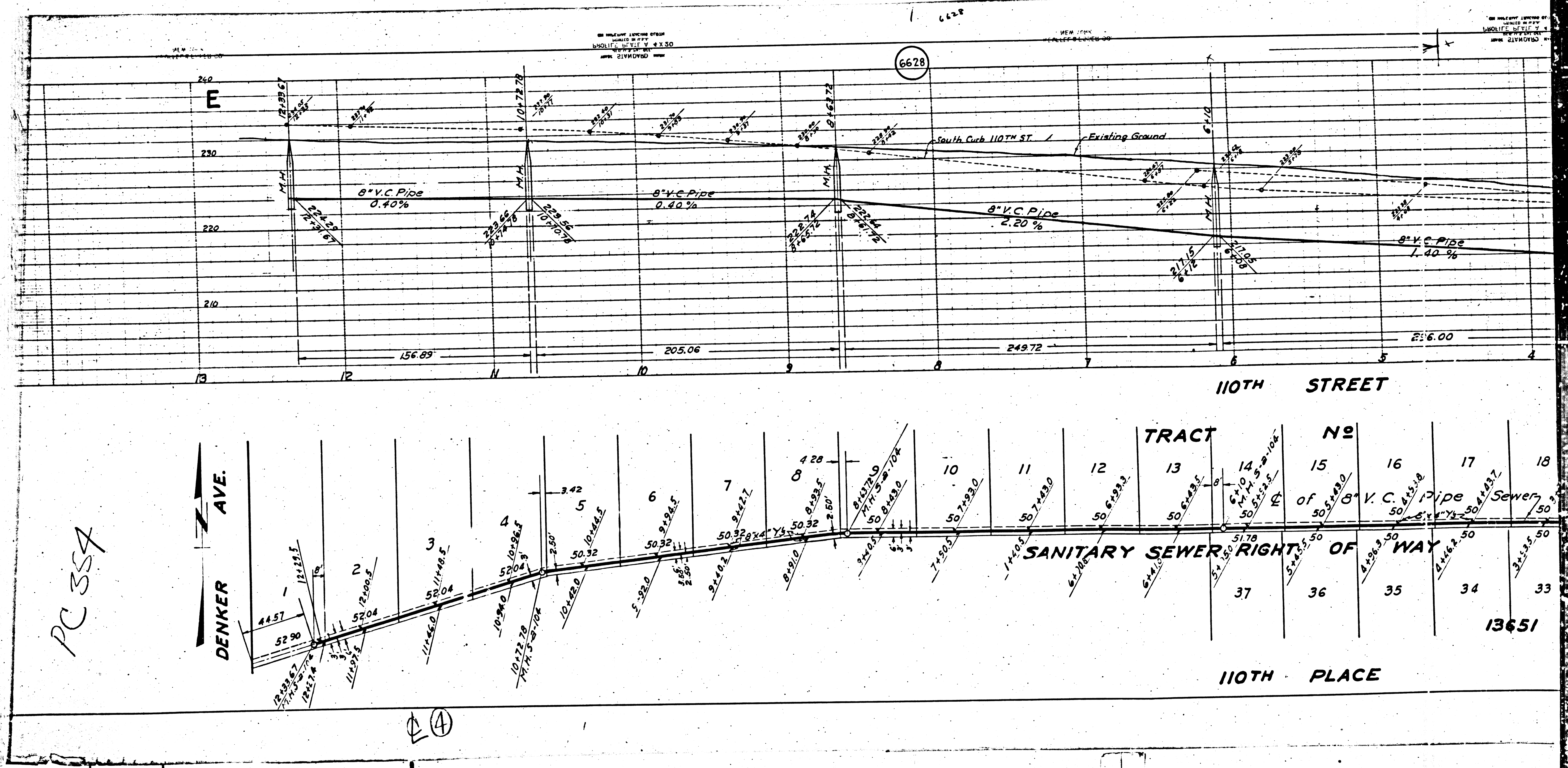
⊕

M

M6



②③



PC 354

④

13651