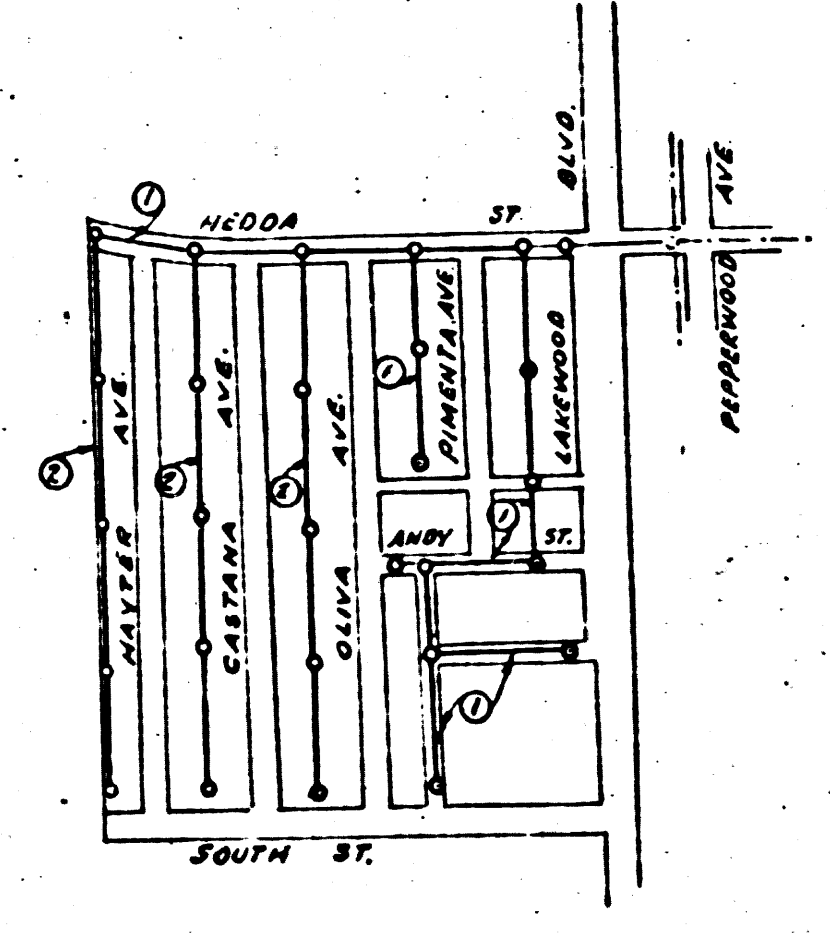


Note: No representative of the County Engineer will survey or lay out any portion of the work.

The owner or his authorized representative shall furnish the County Engineer with grade sheets and stations of all house connections and Y branches and shall provide stakes for them at their proper locations with stationing plainly marked. Any change of location shall be requested in writing by the owner or his representative.

1. USE STANDARD MANHOLE FRAMES AND COVERS (SIZES IN STREETS AND ALLEYS - 5'-0\"/>
- 2. USE STANDARD STRENGTH PIPE.
- 3. USE CEMENT MORTAR FOR ALL VITRIFIED CLAY PIPE JOINTS.
- 4. RESURFACE ALL TRENCH WITHIN PAVED AREA TO MEET LOS ANGELES COUNTY ROAD DEPT. AND STATE HIGHWAY REQUIREMENTS.
- 5. CONSTRUCT HOUSE CONNECTIONS WITH INVERT AT PROPERTY LINE.
- 6. 45 FT. BELOW CURB GRADE OR GRADE OF CENTER LINE OF ALLEY, EXCEPT AS NOTED.
- 7. ENCASE FOUR FEET OF SEWER AT POINTS OF INTERFERENCE WITH POLES AS PER S-4-6.
- 8. CONSTRUCT TOPS OF ALL STRUCTURES IN RIGHTS OF WAY.
- 9. 6\"/>
- 10. ALL STRUCTURES SHALL BE BRICK SEWER STRUCTURES 18\"/>

PROFILE ALIGNMENT AND GRADE OF
SANITARY SEWERS
 TO BE CONSTRUCTED IN:
 HEDDA ST.
 BETWEEN PEPPERWOOD AVE. AND WESTERLY LINE TR. NO. 11600
 ANDY ST.
 BETWEEN LAKEWOOD BLVD. AND QUIVA AVE.
FIRST ALLEY WEST OF LAKEWOOD BLVD.
 BETWEEN SOUTH ST. AND ANDY ST.
FIRST ALLEY SOUTH OF ANDY ST.
 BETWEEN LAKEWOOD BLVD. AND FIRST ALLEY WEST OF LAKEWOOD BLVD.
SANITARY SEWER RIGHTS OF WAY
 IN TRACT NO. 11600
PRIVATE CONTRACT NO. 359
 W.S. 83
SHEET 1 OF 2 SHEETS
 SCALE VERT. 1\"/>



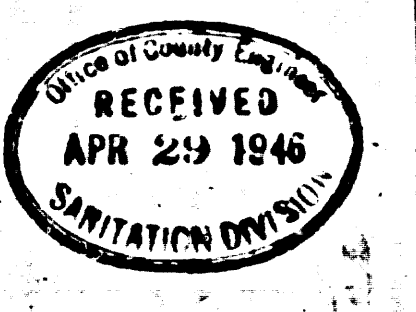
Final CE TRP 7/1/46

FOR LEGEND
 SEE PLAN NO. 30-64

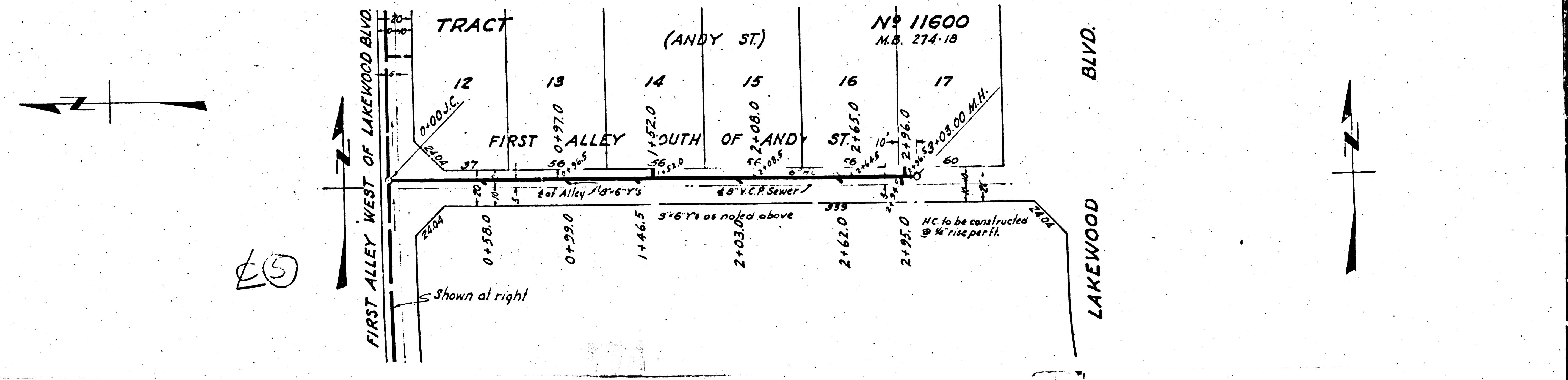
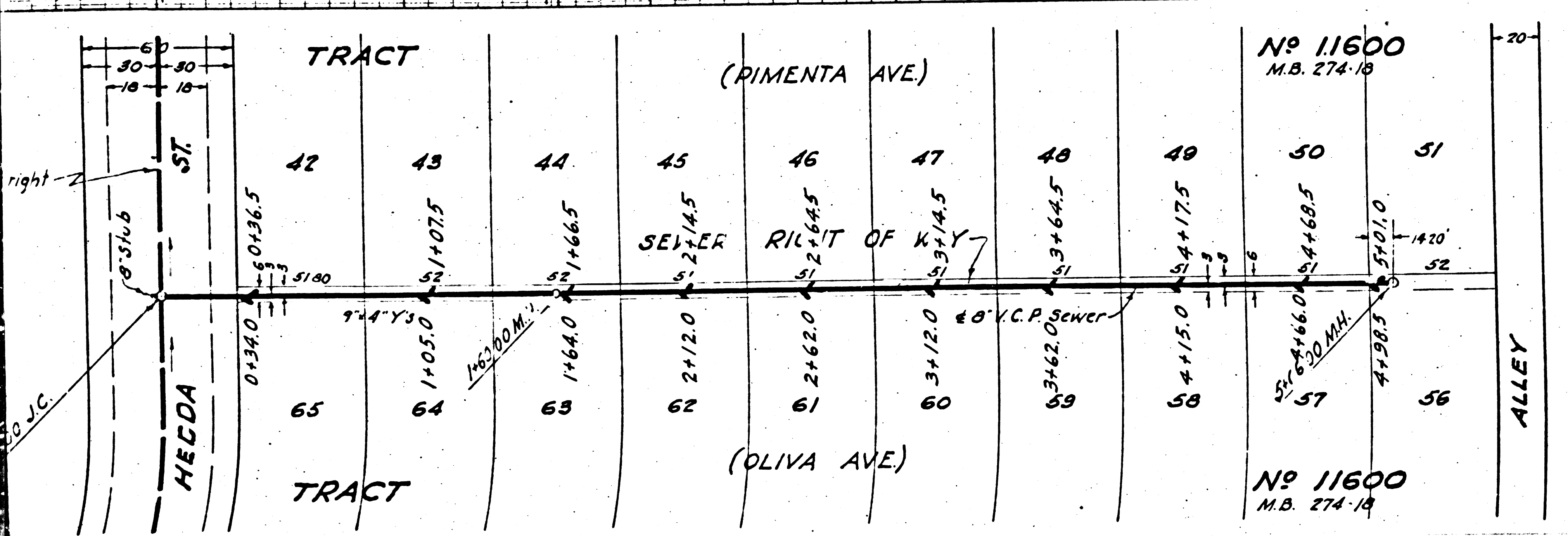
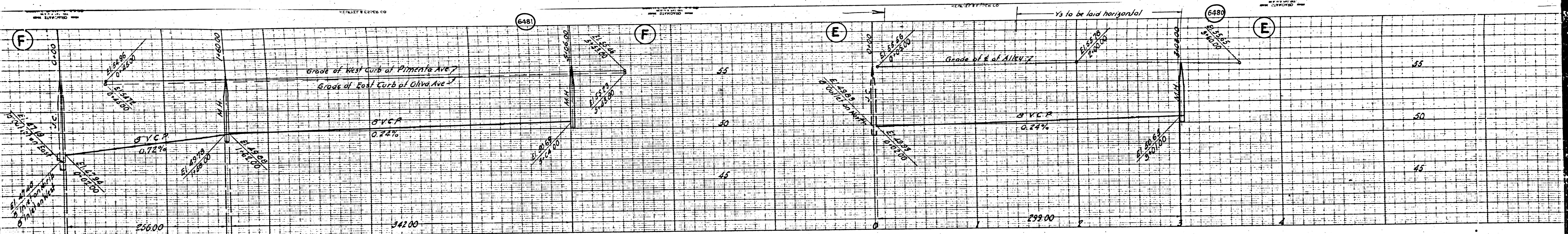
NOTE:
 GRADES TO WHICH THIS IMPROVEMENT IS TO BE CONSTRUCTED ARE SHOWN ON PLANS AND PROFILES. GRADE POINTS FOR TOP OF CURB, CENTER LINE OF STREET OR CENTER LINE OF ALLEY ARE SHOWN BY CIRCLES ON PROFILES AT ALL POINTS BETWEEN DESIGNATED POINTS THE GRADE SHALL BE ESTABLISHED SO AS TO CONFORM TO A STRAIGHT LINE DRAWN BETWEEN SAID DESIGNATED POINTS.
 ELEVATIONS ARE IN FEET ABOVE U.S.C. DATUM OR MEAN SEA LEVEL.
 THIS DRAWING AND THE DATA HEREON ARE HEREBY MADE A PART OF THE SPECIFICATIONS.
 WORK SHALL BE CONSTRUCTED ACCORDING TO SPECIFICATIONS ON FILE IN THE OFFICE OF THE COUNTY ENGINEER, AND SHALL BE PROSECUTED ONLY IN THE PRESENCE OF THE COUNTY ENGINEER. BEFORE WORK CAN BE STARTED, THE CONTRACTOR MUST OBTAIN A PERMIT TO RECAVATE IN COUNTY STREETS FROM THE L.A. COUNTY ROAD DIST. IN A HALL OF RECORDS, AND MAKE A DEPOSIT WITH THE COUNTY ENGINEER, 700 UNION LEAGUE BUILDING, SUFFICIENT TO COVER THE COST OF CONSTRUCTION INSPECTION AND RECORD PLANS.
 IF WORK IS TO BE DONE IN A STATE HIGHWAY, A PERMIT MUST BE OBTAINED FROM THE STATE OF CALIFORNIA, DIVISION OF HIGHWAYS, 805 STATE BUILDING, AFTER MAKING DEPOSIT WITH THE COUNTY ENGINEER.

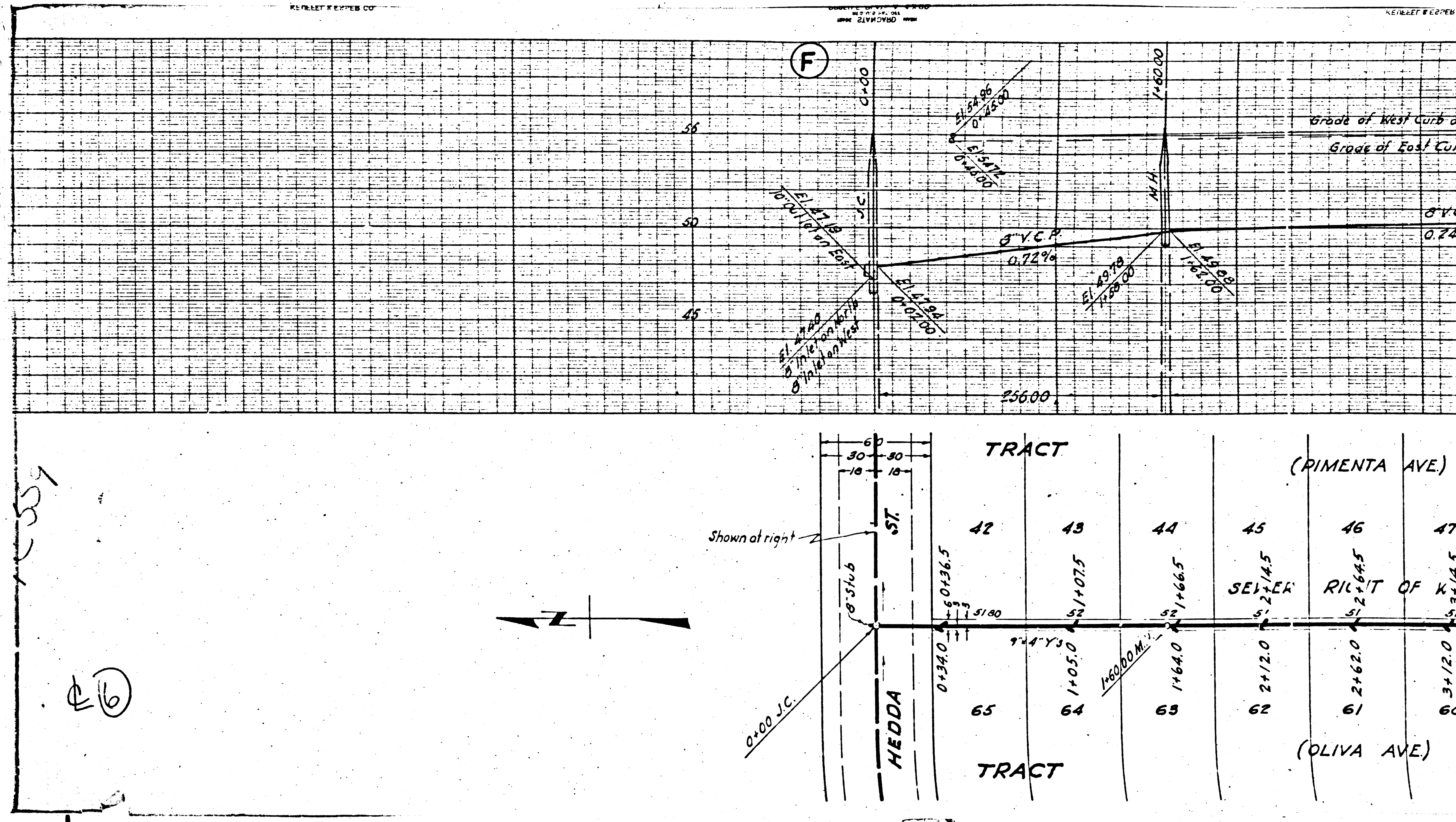
APPROVED: *Alfred Jones*
 COUNTY ENGINEER

APPROVED: *C.R. Constan*
 ASST. CHIEF ENGINEER OF COUNTY SANITATION DISTRICT NO. 2



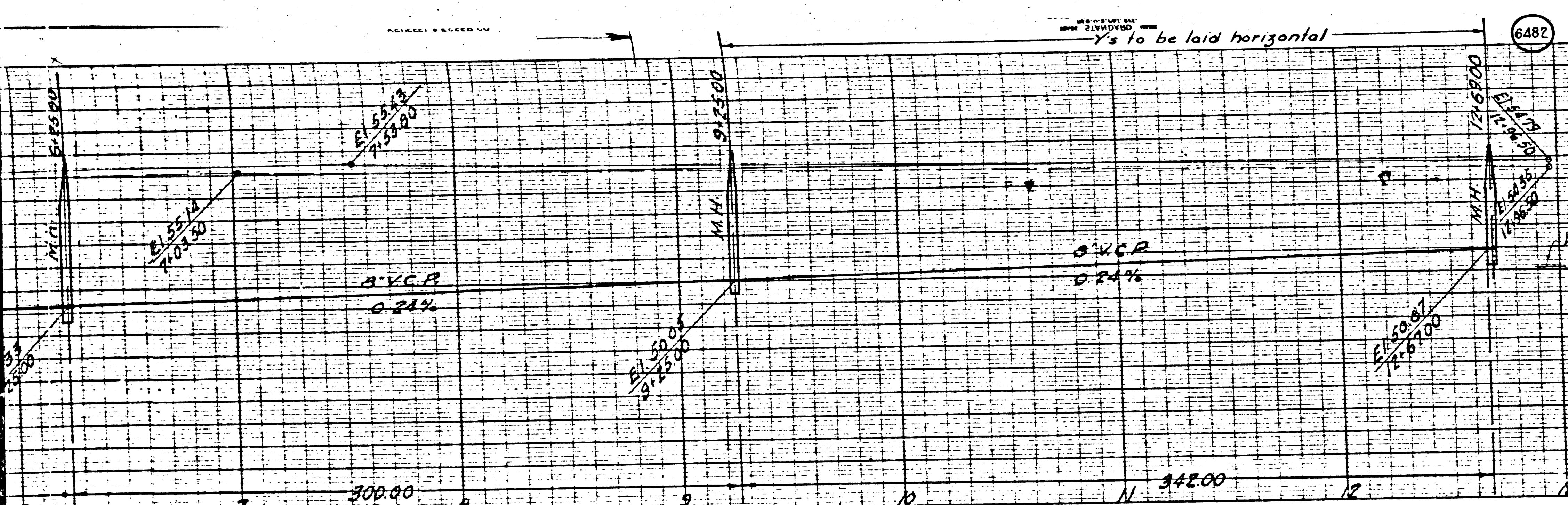
CHECKED BY: *W. Brown* 4/15/1946
 OFFICE OF COUNTY ENGINEER REC. C. NO. 6750





1557

(6)



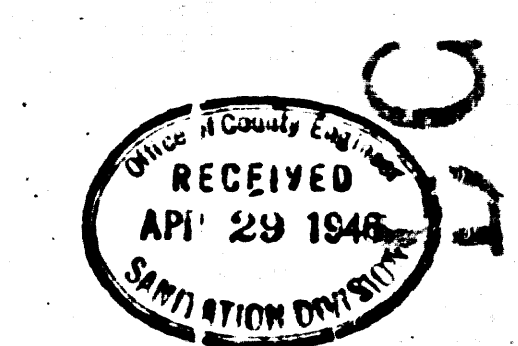
Station	Elevation	Notes
77	61.65	RIGHT OF WAY
78	61.60	
79	61.715	
80	61.720	
81	61.745	
82	61.720	
83	61.245	
84	61.270	
85	61.270	
86	61.270	
87	61.270	
88	61.270	
89	61.270	
90	61.270	
91	61.270	
92	61.270	
93	61.270	
94	61.270	
95	61.270	
96	61.270	
97	61.270	
98	61.270	
99	61.270	
100	61.270	
101	61.270	
102	61.270	
103	61.270	
104	61.270	

PROFILE ALIGNMENT AND GRADE OF
SANITARY SEWERS
 TO BE CONSTRUCTED IN
SANITARY SEWER RIGHTS OF WAY
 IN TRACT NO. 11600
 PRIVATE CONTRACT NO. 358
 W.S. 88
 SHEET 2 OF 2 SHEETS
 PREPARED IN THE OFFICES OF
ADAMS AND ELLS

BY: *J. C. Jones*
 REG. CE NO. 617

FOR LEGEND
 SEE PLAN NO. 30-64

FOR NOTES SEE SHEET 1



COUNTY OF LOS ANGELES, CALIFORNIA
 APPROVED: *Alfred Jones*
 COUNTY ENGINEER
 APPROVED: *V. J. Compton*
 ASST. CHIEF ENGINEER OF COUNTY
 SANITATION DISTRICT NO. 2

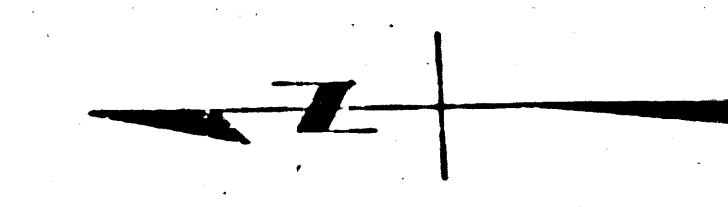
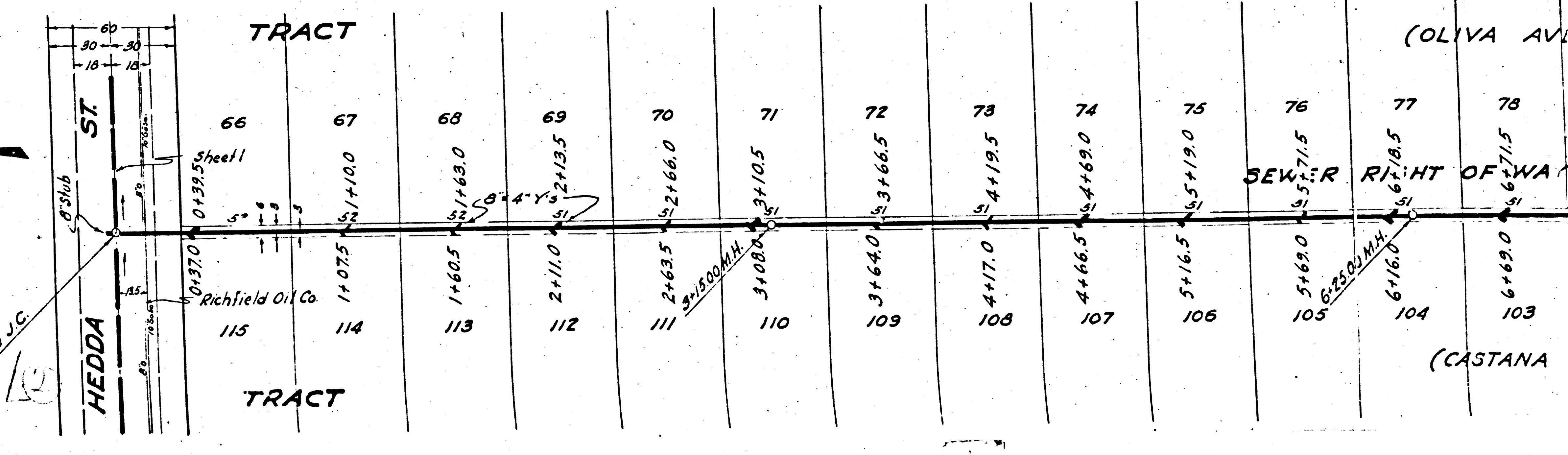
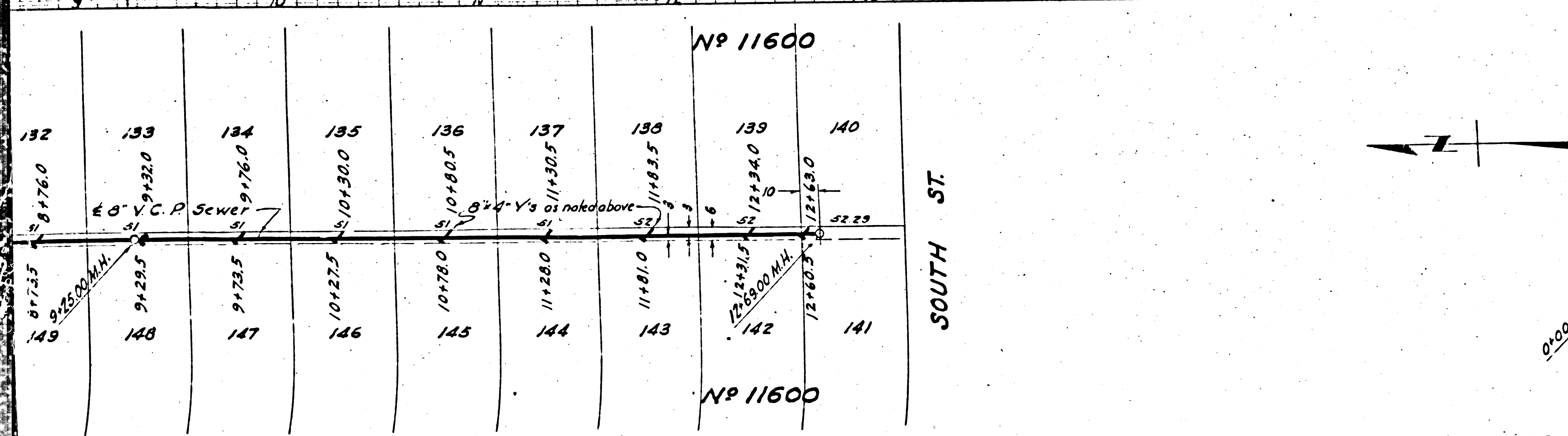
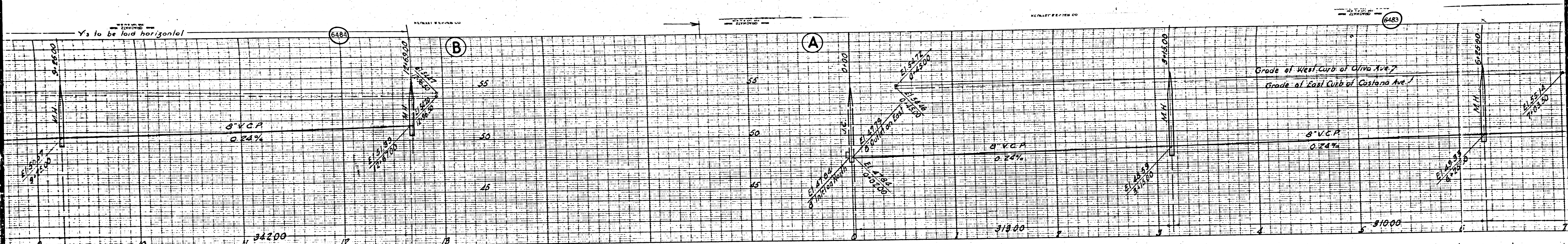
CHECKED BY: *authman* 3/21/46
 OFFICE OF COUNTY ENGINEER & FILE NO. 9350

Final CE. 7/1/46

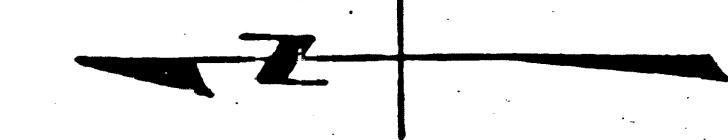
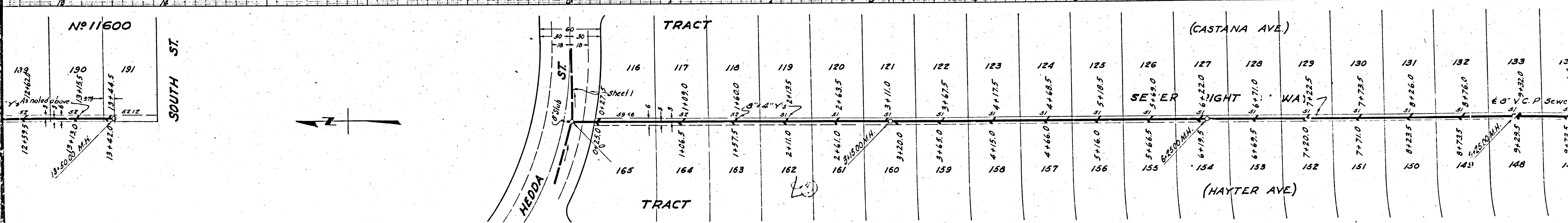
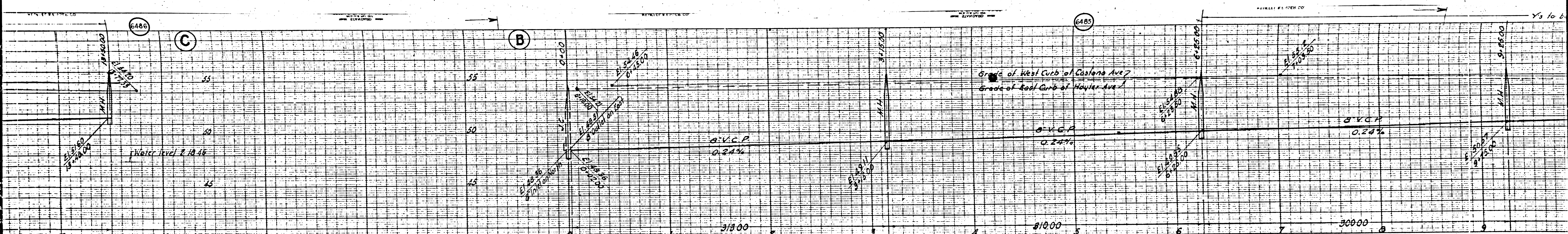
320

320

320

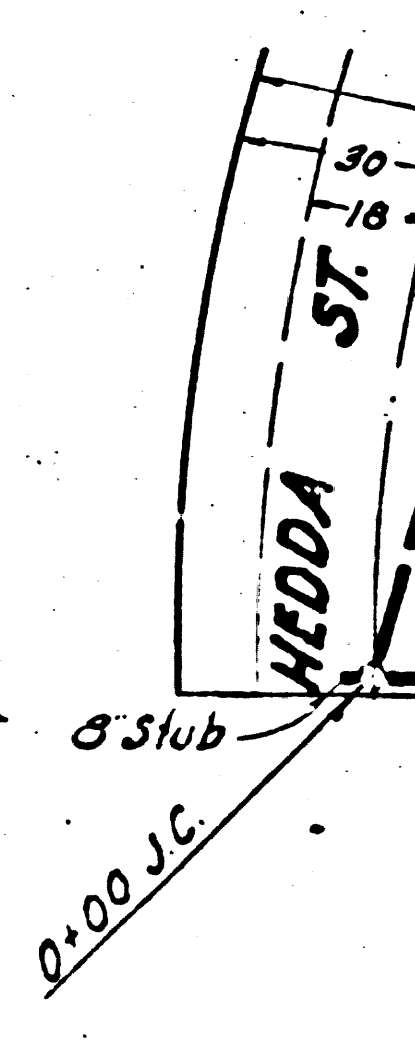
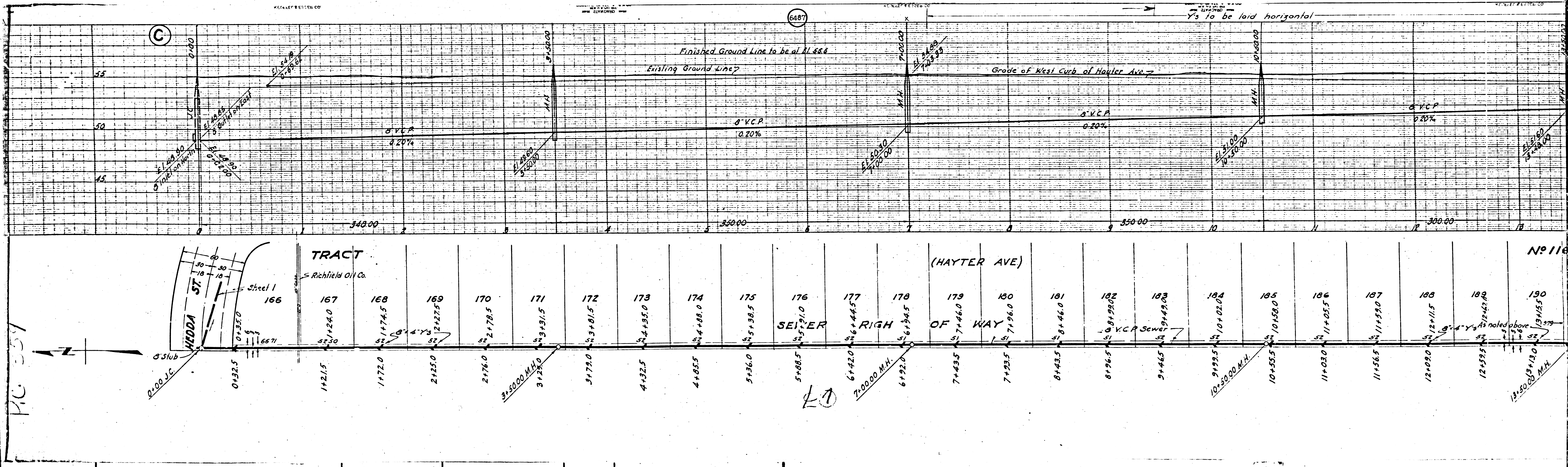


NP 11600
 SOUTH ST.
 TRACT
 TRACT
 (OLIVA AVE)
 (CASTANA)



No 11600
 SOUTH ST.
 132
 190
 191
 12+59.5
 13+42.0
 13+44.5
 13+45.5
 13+46.5
 13+47.5
 13+48.5
 13+49.5
 13+50.5
 13+51.5
 13+52.5
 13+53.5
 13+54.5
 13+55.5
 13+56.5
 13+57.5
 13+58.5
 13+59.5
 14+00.5
 14+01.5
 14+02.5
 14+03.5
 14+04.5
 14+05.5
 14+06.5
 14+07.5
 14+08.5
 14+09.5
 14+10.5
 14+11.5
 14+12.5
 14+13.5
 14+14.5
 14+15.5
 14+16.5
 14+17.5
 14+18.5
 14+19.5
 14+20.5
 14+21.5
 14+22.5
 14+23.5
 14+24.5
 14+25.5
 14+26.5
 14+27.5
 14+28.5
 14+29.5
 14+30.5
 14+31.5
 14+32.5
 14+33.5
 14+34.5
 14+35.5
 14+36.5
 14+37.5
 14+38.5
 14+39.5
 14+40.5
 14+41.5
 14+42.0

TRACT
 116 117 118 119 120 121 122 123 124 125 126 127 128 129 130 131 132 133
 165 164 163 162 161 160 159 158 157 156 155 154 153 152 151 150 149 148
 (CASTANA AVE.)
 (HAYTER AVE.)
 12+59.5
 13+42.0
 13+44.5
 13+45.5
 13+46.5
 13+47.5
 13+48.5
 13+49.5
 13+50.5
 13+51.5
 13+52.5
 13+53.5
 13+54.5
 13+55.5
 13+56.5
 13+57.5
 13+58.5
 13+59.5
 14+00.5
 14+01.5
 14+02.5
 14+03.5
 14+04.5
 14+05.5
 14+06.5
 14+07.5
 14+08.5
 14+09.5
 14+10.5
 14+11.0
 14+11.5
 14+12.5
 14+13.5
 14+14.5
 14+15.0
 14+16.5
 14+17.5
 14+18.5
 14+19.5
 14+20.5
 14+21.0
 14+22.5
 14+23.5
 14+24.5
 14+25.5
 14+26.0
 14+27.0
 14+28.5
 14+29.5
 14+30.5
 14+31.5
 14+32.0
 14+32.5
 14+33.5
 14+34.5
 14+35.5
 14+36.5
 14+37.5
 14+38.5
 14+39.5
 14+40.5
 14+41.5
 14+42.0



TRACT
Richfield Oil Co.

Station	Station	Station	Station	Station	Station	Station	Station	Station	Station	Station	Station	Station	Station	Station	Station	Station	Station	Station	Station	Station	Station				
166	167	168	169	170	171	172	173	174	175	176	177	178	179	180	181	182	183	184	185	186	187	188	189	190	
1+21.5	1+24.0	1+27.5	2+27.5	2+78.5	3+31.5	3+72.0	4+32.5	4+88.0	5+36.0	5+88.5	6+42.0	6+92.0	7+43.5	7+93.5	8+43.5	8+96.5	9+44.5	9+99.5	10+53.0	11+03.0	11+56.5	12+09.0	12+59.5	13+15.5	13+55.0

PG 351

No 116