

Co. B.M. No. B.D.P. Elev. 174.575
 2nd Prec. Cont. 44 W. of Bond of P.R.
 on S.E. Cor. Broadway & Madry Ave.

1. USE SPECIAL MANHOLE FRAMES AND COVERS 3'-0" X 3'-0"
2. USE STANDARD STRENGTH PIPE
3. USE CEMENT MORTAR FOR ALL VITRIFIED CLAY PIPE JOINTS
4. RESURFACE ALL TRENCHED WITHIN PAVED AREA TO MEET LOS ANGELES COUNTY ROAD DEPT REQUIREMENTS
5. EXPOSE FOUR FEET OF SEWER AT POINTS OF INTERFERENCE WITH POLES AS PER S-3-B-3
6. FINISH TOPS OF MANHOLES IN RIGHTS OF WAY SIX INCHES ABOVE FINISHED GRADE
7. SEWER STRUCTURES SHALL BE BRICK STRUCTURES PER S-3-B-6

NOTE:
 No representative of the County Engineer will survey or lay out any portion of the work. The owner or his authorized representative shall furnish the County Engineer with Grade Sheets and Stationing for all House Connections and Y Branches and shall provide stakes for lines of these project locations with stationing plainly marked. Any change of location shall be reported in writing by the contractor to the representative.
 No alterations shall be made on these plans without approval of the County Engineer.

PROFILE, ALIGNMENT AND GRADE OF
SANITARY SEWERS
 TO BE CONSTRUCTED IN
SANITARY SEWER RIGHT OF WAY
 IN TRACT NO. 12770

PRIVATE CONTRACT NO. 377
 W.S. 37
 ONE SHEET
 MAY 1946
 PREPARED IN THE OFFICES OF

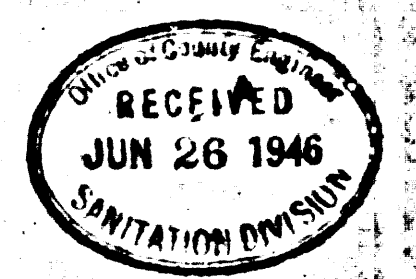
SEABOARD ENGINEERING CO.
 BY: *Mark A. Roben*
 REG. C.E. NO. 2053

FOR LEGEND
 SEE PLAN NO. 3-C-66

NOTE:
 GRADES TO WHICH THIS IMPROVEMENT IS TO BE CONSTRUCTED ARE SHOWN ON PLANS AND PROFILE. GRADE POINTS FOR TOP OF CURB, CENTER LINE OF STREET OR CENTER LINE OF ALLEY ARE SHOWN BY CIRCLES ON PROFILES. AT ALL POINTS BETWEEN DESIGNATED POINTS THE GRADE SHALL BE ESTABLISHED SO AS TO CONFORM TO A STRAIGHT LINE DRAWN BETWEEN SAID DESIGNATED POINTS.
 ELEVATIONS ARE IN FEET ABOVE U.S.C. & G.S. DATUM OR MEAN SEA LEVEL.
 THIS DRAWING AND THE DATA HEREON ARE HEREBY MADE A PART OF THE SPECIFICATIONS.
 WORK SHALL BE CONSTRUCTED ACCORDING TO SPECIFICATIONS ON FILE IN THE OFFICE OF THE COUNTY ENGINEER AND SHALL BE PROSECUTED ONLY IN THE PRESENCE OF THE COUNTY ENGINEER. BEFORE WORK CAN BE STARTED THE CONTRACTOR MUST OBTAIN A PERMIT TO BEGIN WORK IN COUNTY STREETS FROM THE L.A. COUNTY ROAD DEPT., 1101 HALL OF RECORDS, AND MAKE A DEPOSIT WITH THE COUNTY ENGINEER, 100 BROADWAY BUILDING, SUFFICIENT TO COVER THE COST OF CONSTRUCTION INSPECTION AND RECORD PLANS.

COUNTY OF LOS ANGELES, CALIFORNIA.

APPROVED *[Signature]*
 CHIEF DEPUTY COUNTY ENGINEER
 APPROVED *[Signature]*
 CHIEF DIVISION OF COUNTY SANITATION DISTRICT NO. 2

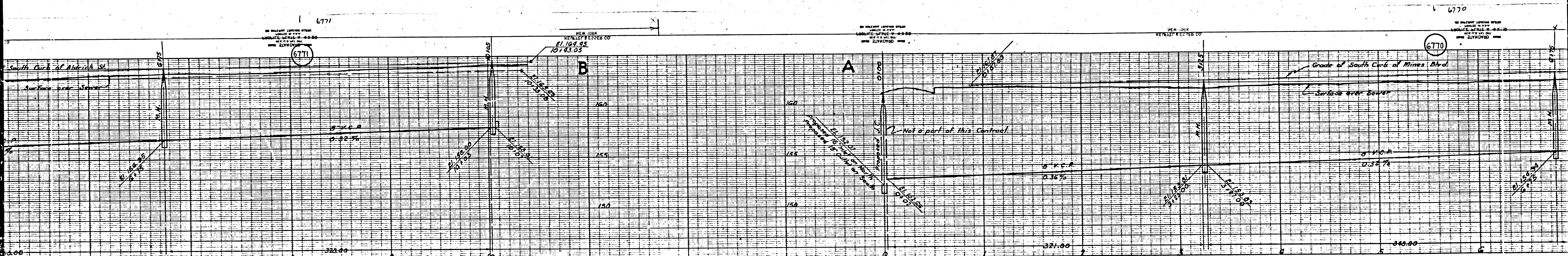


CHECKED BY *[Signature]* JUN 1946
 OFFICE OF COUNTY ENGINEER, REG. C.E. NO. 2053

Final Ck. T.P. 12/2/46

SHEET NO. 1330

C.C. 111



ST											MINES BLVD.																																																																																																																			
43	44	45	46	47	48	49	50	51	52	53	54	55	56	57	58	59	60	61	62	63	64	65	66	67	68	69	70	71																																																																																																		
5+63.0	6+172	6+68.0	7+33.2	7+92.0	8+52.0	9+08.5	9+65.0	10+22.5	10+80.0	11+37.5	11+95.0	12+52.5	13+10.0	13+67.5	14+25.0	14+82.5	15+40.0	15+97.5	16+55.0	17+12.5	17+70.0	18+27.5	18+85.0	19+42.5	20+00.0	20+57.5	21+15.0	21+72.5	22+30.0	22+87.5	23+45.0	24+02.5	24+60.0	25+17.5	25+75.0	26+32.5	26+90.0	27+47.5	28+05.0	28+62.5	29+20.0	29+77.5	30+35.0	30+92.5	31+50.0	32+07.5	32+65.0	33+22.5	33+80.0	34+37.5	34+95.0	35+52.5	36+10.0	36+67.5	37+25.0	37+82.5	38+40.0	38+97.5	39+55.0	40+12.5	40+70.0	41+27.5	41+85.0	42+42.5	42+100.0																																																													
26	25	24	23	22	21	20	19	18	17	16	15	14	13	12	11	10	9	8	7	6	5	4	3	2	1	0	1	2	3	4	5	6	7	8	9	10	11	12	13	14	15	16	17	18	19	20	21	22	23	24	25	26	27	28	29	30	31	32	33	34	35	36	37	38	39	40	41	42	43	44	45	46	47	48	49	50	51	52	53	54	55	56	57	58	59	60	61	62	63	64	65	66	67	68	69	70	71	72	73	74	75	76	77	78	79	80	81	82	83	84	85	86	87	88	89	90	91	92	93	94	95	96	97	98	99	100

No. 12770
N.B. 270-27-23

CEDARCLIFF AVE.

TRACT
SEWER
RIGHT

DUHLAP TYLER

NEW YORK
KENNEL & EPPER CO.

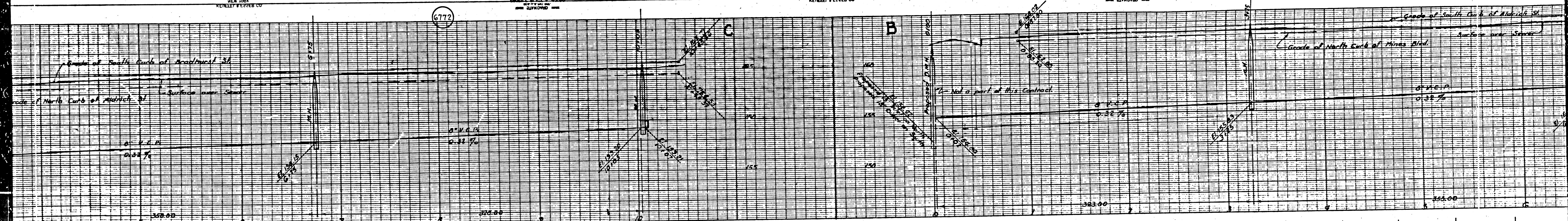
6772

NO. 12770
M.B. 270-27-28

NEW YORK
KENNEL & EPPER CO.

NEW YORK
KENNEL & EPPER CO.

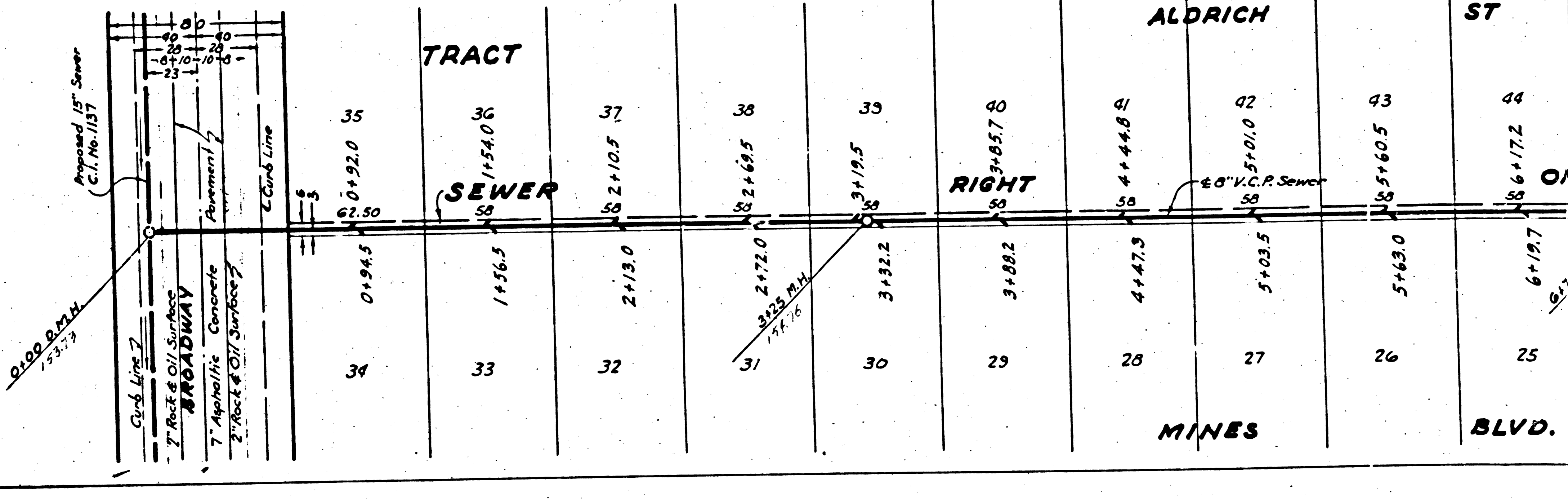
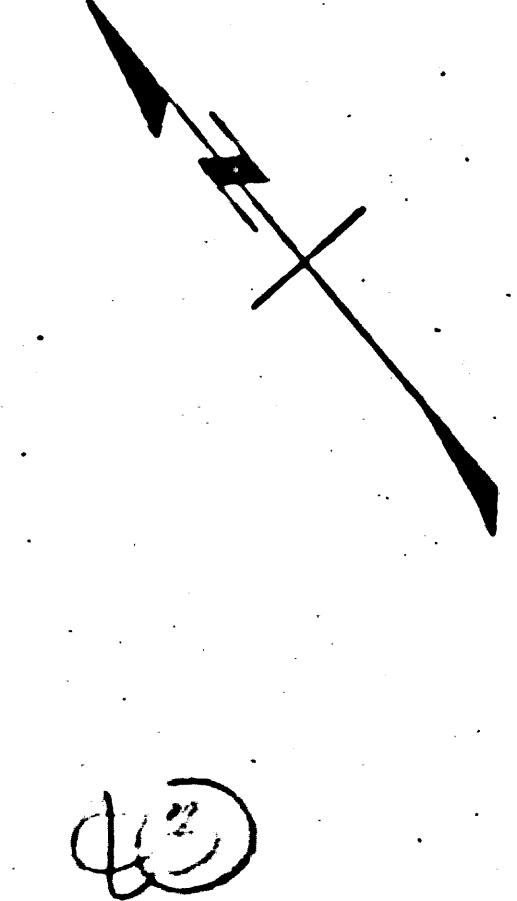
NEW YORK
KENNEL & EPPER CO.



BRADHURST ST.										ALDRICH ST.									
RIGHT										RIGHT									
74	75	76	77	78	79	80	81	82	83	84	85	86	87	88	89	90	91	92	93
53+85.5	54+44.5	55+01.0	55+60.0	56+19.5	56+89.5	57+32.5	57+92.0	58+48.5	59+07.5	59+66.5	60+25.5	60+84.5	61+43.5	62+02.5	62+61.5	63+20.5	63+79.5	64+38.5	64+97.5
3+80	4+17.0	5+03.5	5+62.5	6+22.0	6+82.0	7+35.0	7+94.5	8+51.0	9+10.0	9+69.0	10+28.0	10+87.0	11+46.0	12+05.0	12+64.0	13+23.0	13+82.0	14+41.0	15+00.0
63	62	61	60	59	58	57	56	55	54	53	52	51	50	49	48	47	46	45	44
ALDRICH										MINES BLVD.									

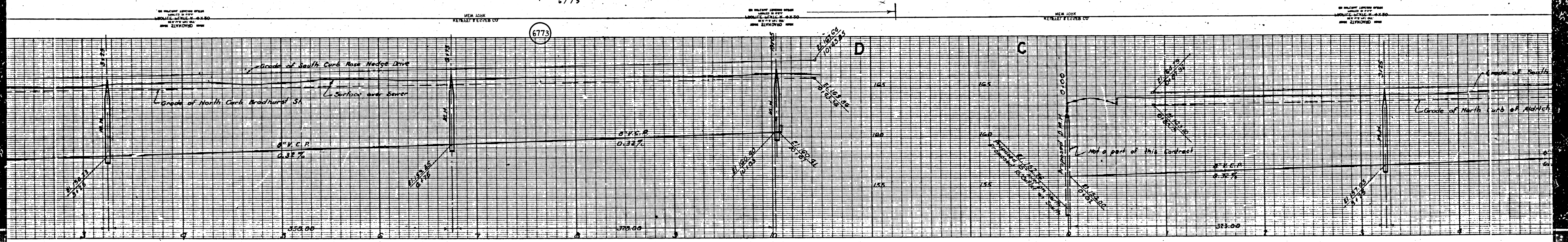
No. 12770
M.B. 270-27-28

CEDARCLIFF AVE.

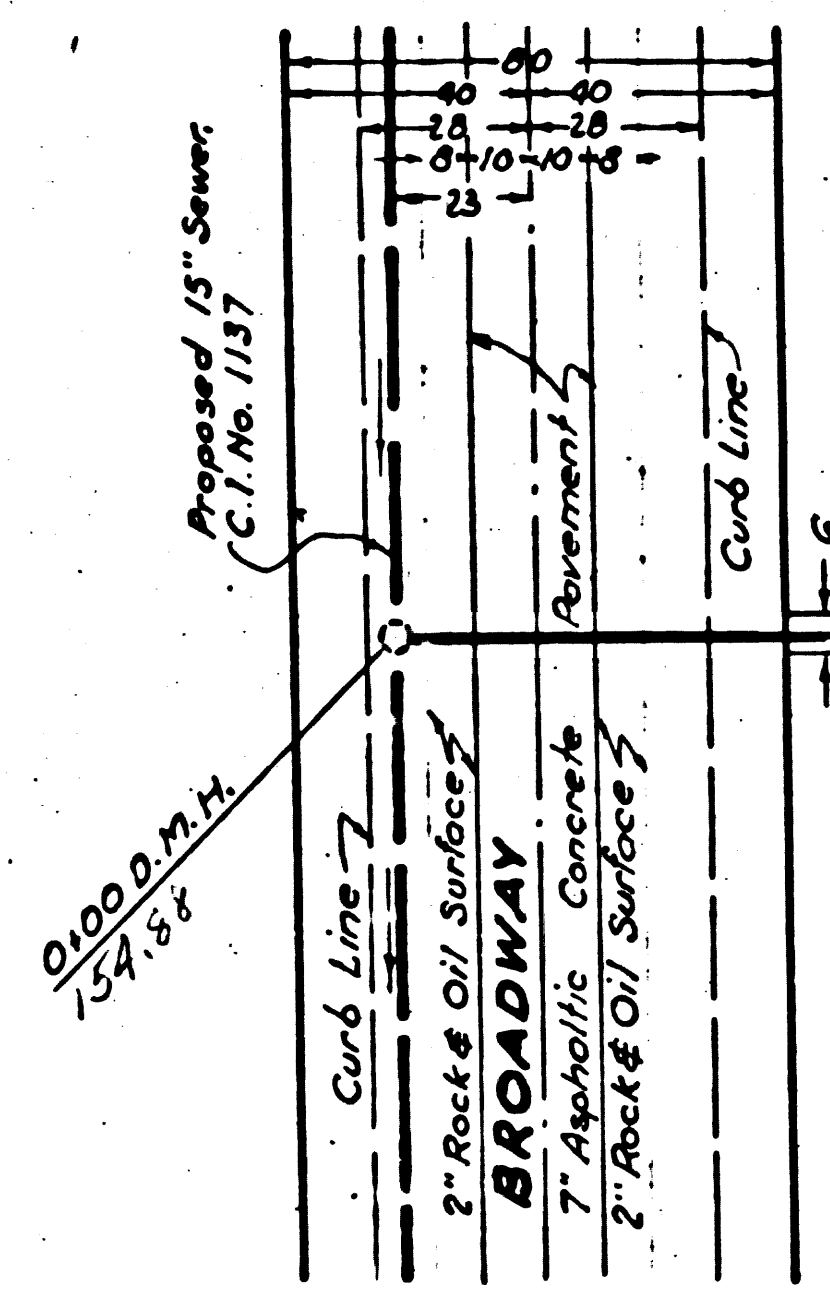
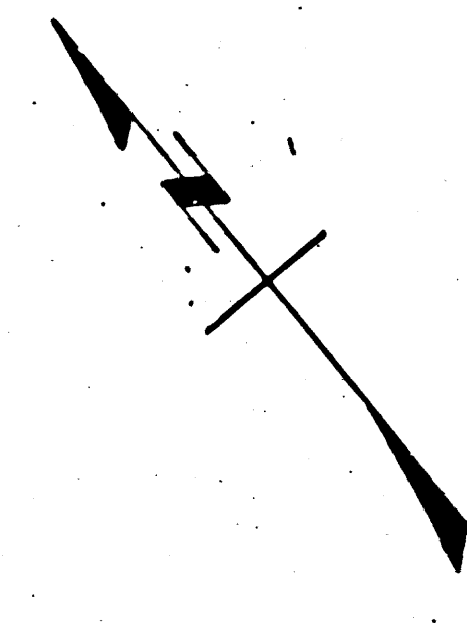


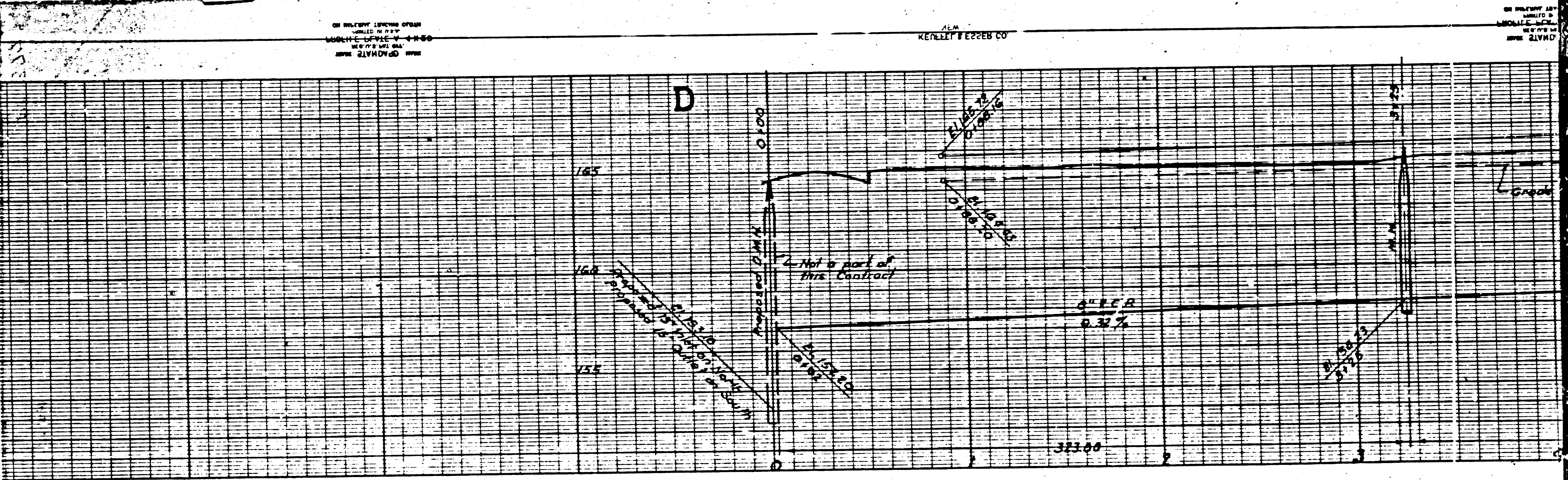
6773

6773



ROSE HEDGE DRIVE													No 12770 M.D. 270-27-28		TRACT												
106	107	108	109	110	111	112	113	114	115	116	117	118	119	68	69	70	71	72	73	74	75						
2+725.5	3+175	3+862	4+427	5+102.0	5+580.0	6+170	6+697	7+325	7+918	8+505	9+107.0	9+660	3+50	0+194.0	1+562	2+100	2+690	3+195	3+880	4+445							
99	98	97	96	95	94	93	92	91	90	89	88	87	86	68	67	66	65	64	63	62							
BRADHURST															ALDRICH												





0+00 D.M.M. Proposed 15" Sewer C.I. 1197 2' Rock & Oil Surface 7" Asphalt Conc. Amusement L. Curb Line 2' Rock & Oil Surface 7" Asphalt Conc. Amusement L. Curb Line 2' Rock & Oil Surface 7" Asphalt Conc. Amusement L. Curb Line	103	104	105	106	107	108
	0+192.2	1+57.0	2+11.0	2+70.0	3+17.5	3+86.2
	59	59	59	59	59	59
	0194.7	1+57.0	2+11.0	2+72.5	3+29.5	3+88.7
	102	101	100	99	98	97

103 104 105 106 107 108
 SEWER
 102 101 100 99 98 97
 RIGHT

P.C. 355
 P.I. 377

10
 5