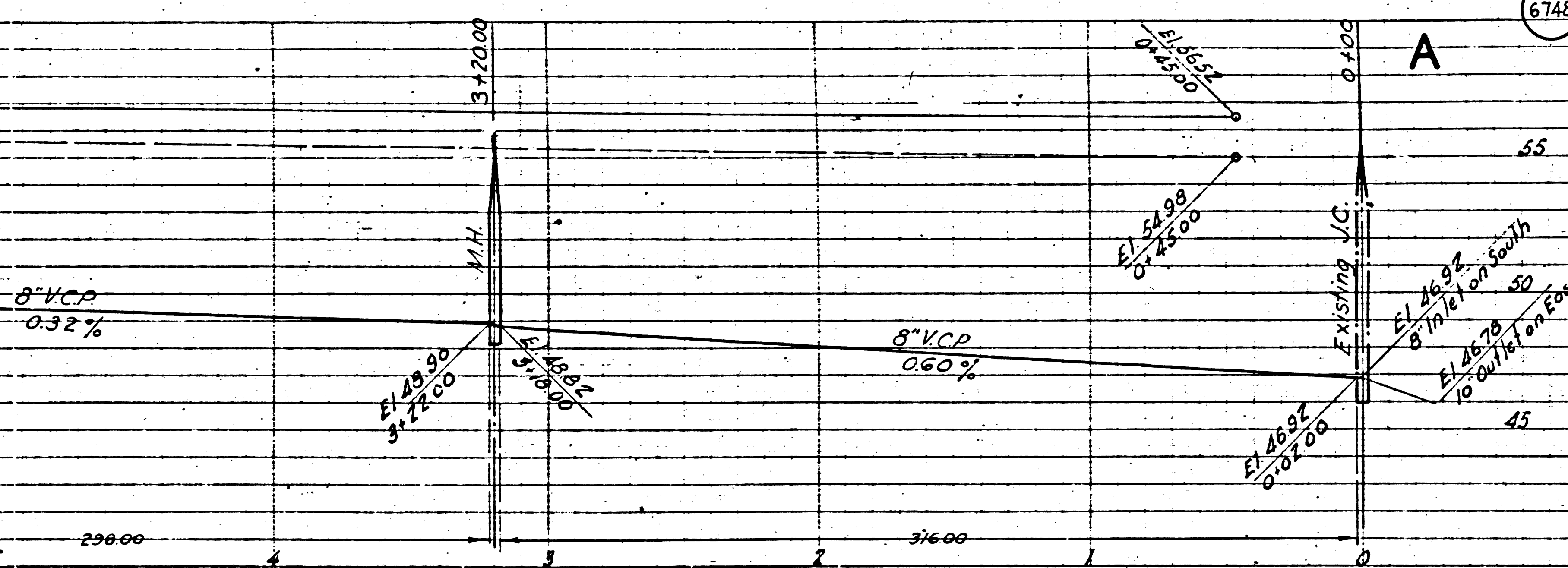


6748

Trim Line 7



1. USE SPECIAL MANHOLE FRAMES AND COVERS AS PER PLAN NO. S-109, EXCEPT AS NOTED
2. USE STANDARD STRENGTH PIPE
3. USE CEMENT MORTAR FOR ALL VITRIFIED CLAY PIPE JOINTS
4. RESURFACE ALL TRENCH WITHIN PAVED AREA TO MEET LOS ANGELES COUNTY ROAD DEPT. REQUIREMENTS
5. ENCASE FOUR FEET OF SEWER AT POINTS OF INTERFERENCE WITH POLES AS PER S-6
6. ALL STRUCTURES SHALL BE BRICK SEWER STRUCTURES S-104
7. CONSTRUCT TOPS OF ALL STRUCTURES IN RIGHTS OF WAY 6" ABOVE FINISHED GRADE
8. CONSTRUCT HOUSE CONNECTIONS WITH INVERT AT PROPERTY LINE 'A' BELOW CURB GRADE

No representative of the County Engineer shall survey or lay out any portion of the work.

The owner or his authorized representative shall furnish the County Engineer with grade sheets and stations of all house connections and Y-branches, and shall provide stakes for them at their proper locations with stations plainly marked. Any change in location shall be requested in writing by the owner or his representative.

No revisions shall be made in these plans without approval of the County Engineer.

PROFILE, ALIGNMENT AND GRADE OF

SANITARY SEWERS
TO BE CONSTRUCTED IN

SANITARY SEWER RIGHTS OF WAY
IN TRACT NO. 12673

PRIVATE CONTRACT NO. 381
WS 33

SHEET 1 OF 2 SHEETS

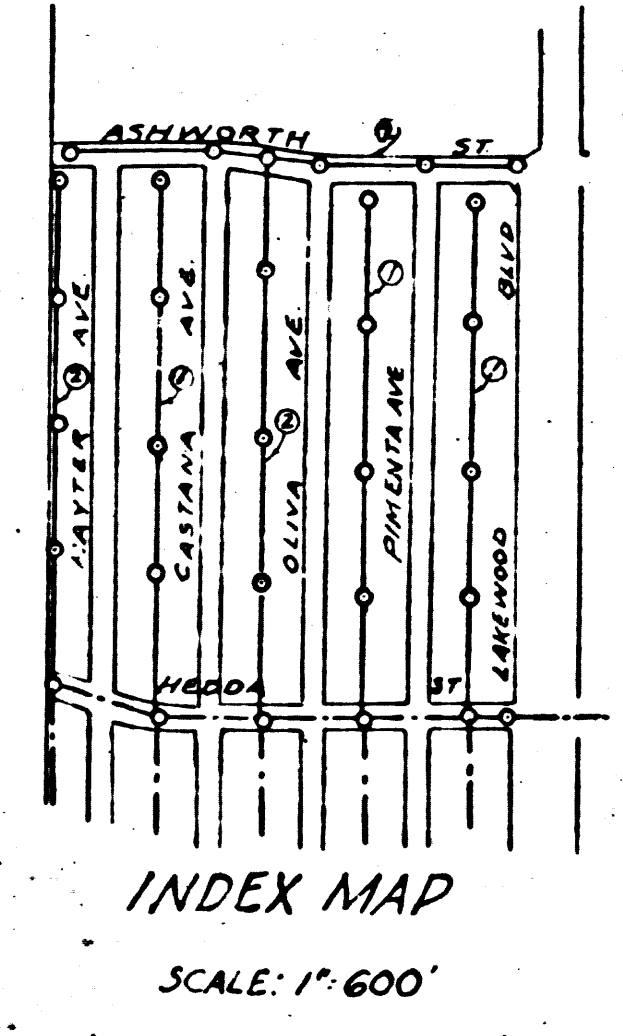
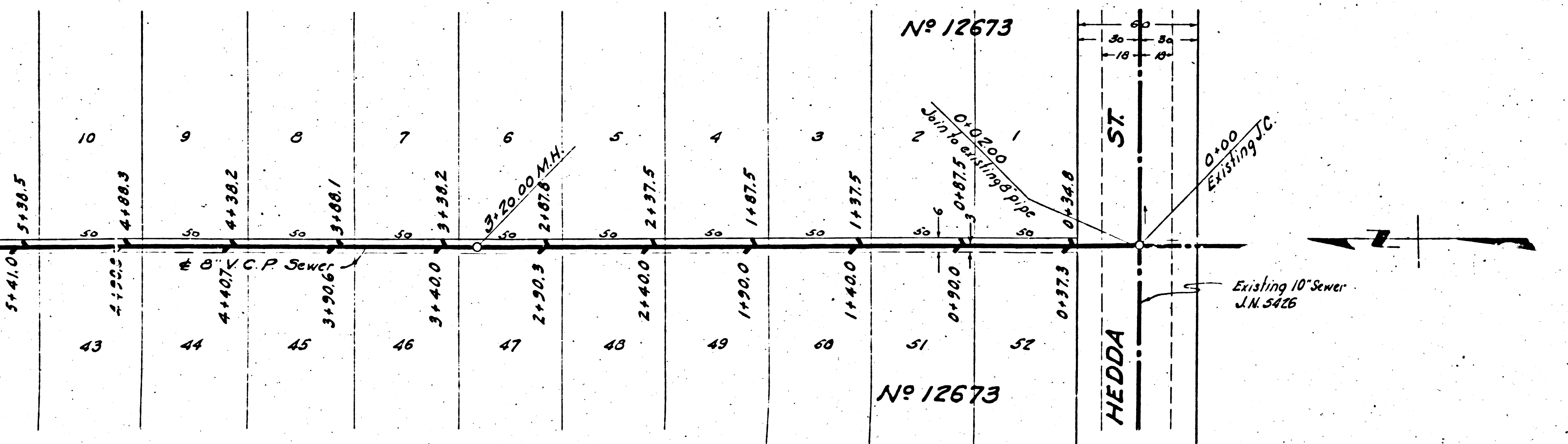
SCALE VERT. 1" = 4'
HORIZ. 1" = 40'

JUNE 1946

PREPARED IN THE OFFICE OF

ADAMS & ELLS

LC 381



NOTE:

GRADES TO WHICH THIS IMPROVEMENT IS TO BE CONSTRUCTED ARE SHOWN ON PLANS AND PROFILE. GRADE POINTS FOR TOP OF CURB, CENTER LINE OF STREET OR CENTER LINE OF ALLEY ARE SHOWN BY CIRCLES ON PROFILES. AT ALL POINTS BETWEEN DESIGNATED POINTS THE GRADE SHALL BE ESTABLISHED SO AS TO CONFORM TO A STRAIGHT LINE DRAWN BETWEEN SAID DESIGNATED POINTS.

ELEVATIONS ARE IN FEET ABOVE U.S.G.S. DATUM OR MEAN SEA LEVEL.

THIS DRAWING AND THE DATA HEREON ARE HEREBY MADE A PART OF THE SPECIFICATIONS.

WORK SHALL BE CONSTRUCTED ACCORDING TO SPECIFICATIONS ON FILE IN THE OFFICE OF THE COUNTY ENGINEER AND SHALL BE PROSECUTED DAILY IN THE PRESENCE OF THE COUNTY ENGINEER.

BEFORE WORK CAN BE STARTED THE CONTRACTOR MUST OBTAIN A PERMIT TO EXCAVATE IN COUNTY STREETS FROM THE L.A. COUNTY ROAD DEPT., 1104 HALL OF RECORDS, AND MAKE A DEPOSIT WITH THE COUNTY ENGINEER, 700 UNION LEAGUE BUILDING, SUFFICIENT TO COVER THE COST OF CONSTRUCTION AND RECORD PLANS.

COUNTY OF LOS ANGELES, CALIFORNIA

APPROVED *[Signature]*
CHIEF DEPT. COUNTY ENGINEER

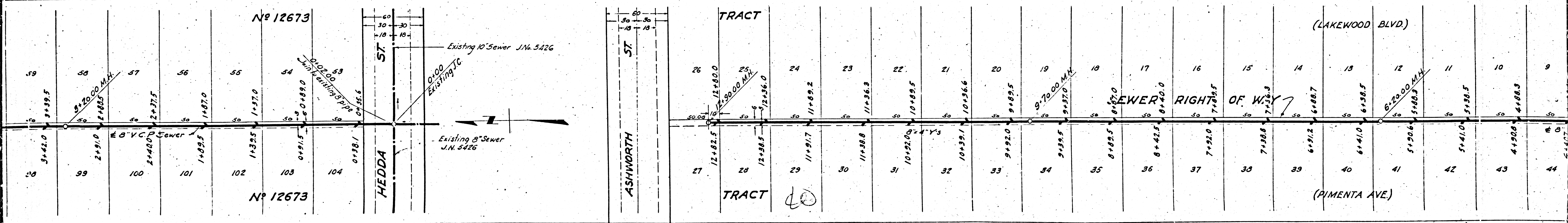
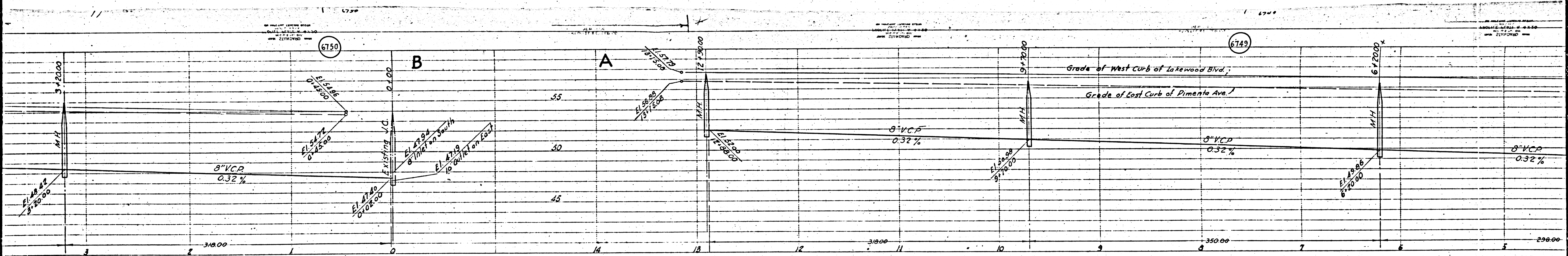
APPROVED *[Signature]*
CHIEF ENGINEER OF COUNTY
SANITATION DISTRICT NO. 2

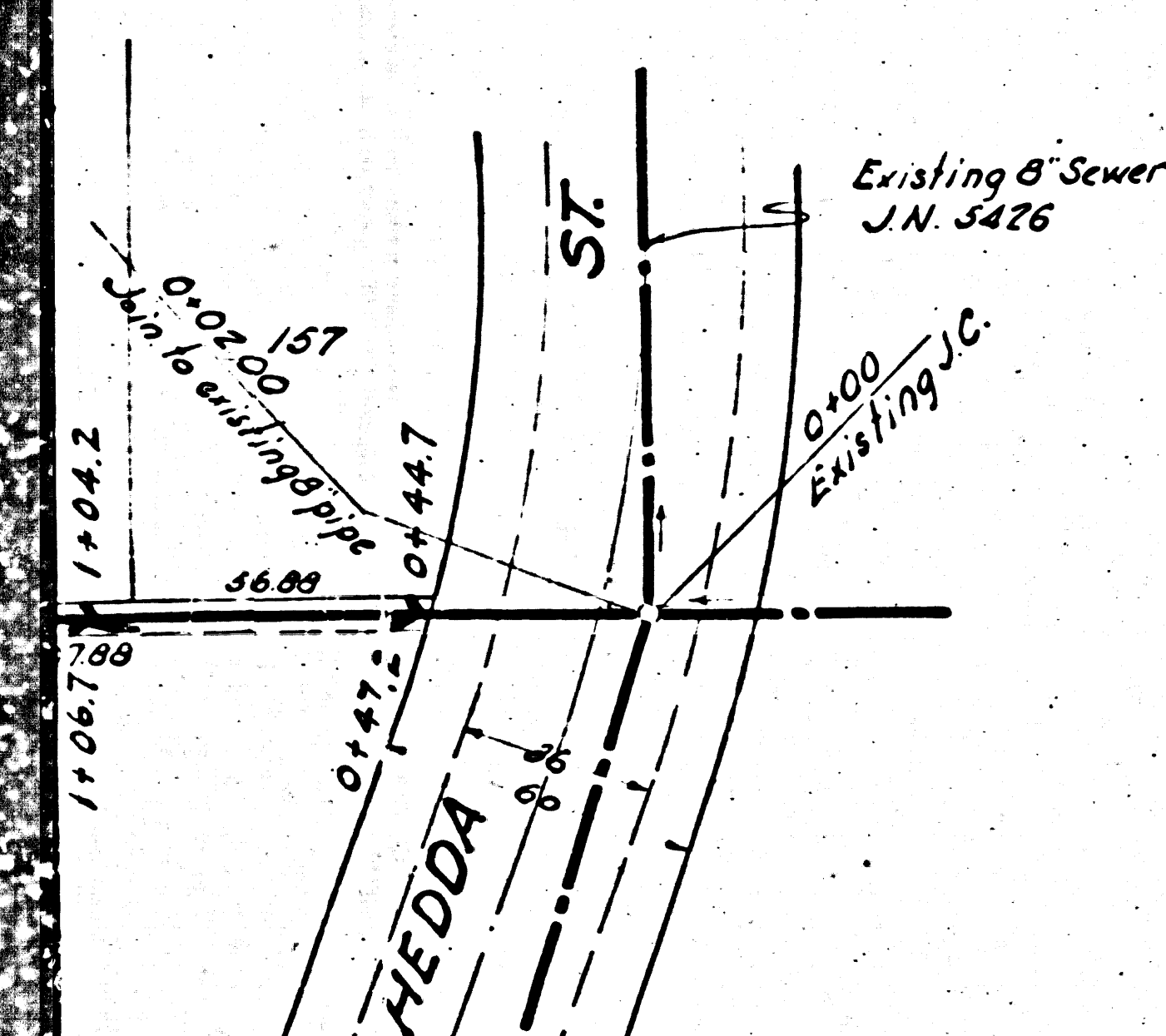
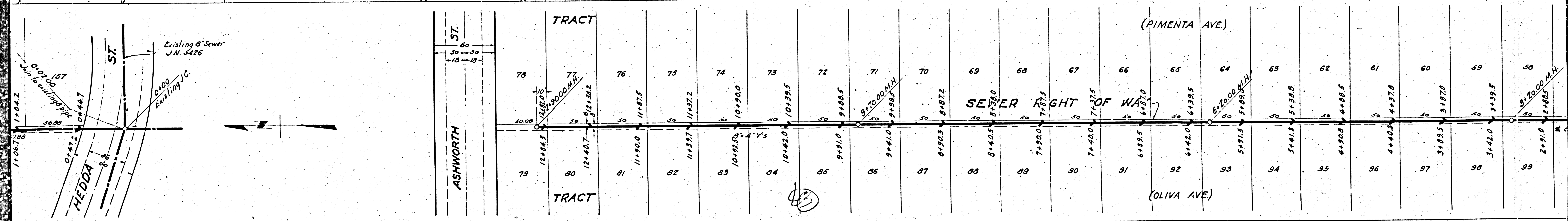
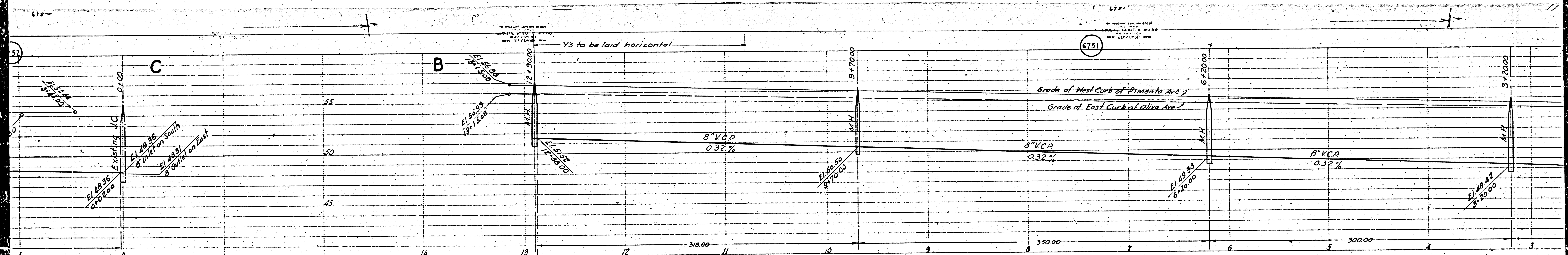
CHECKED BY *[Signature]* 7/17 - 1946
OFFICE OF COUNTY ENGINEER, REG. C.E. NO. 6320

RECEIVED
JUL 23 1946
SANITATION DISTRICT

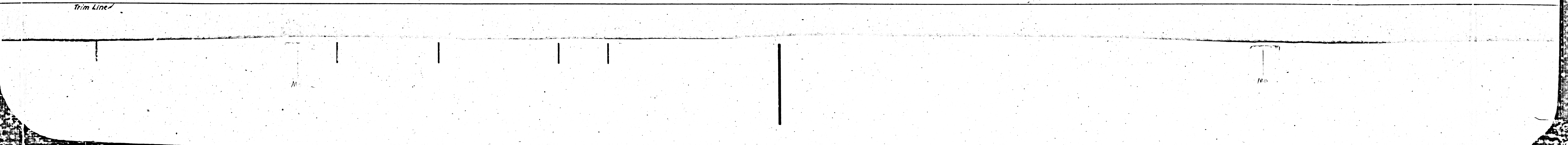
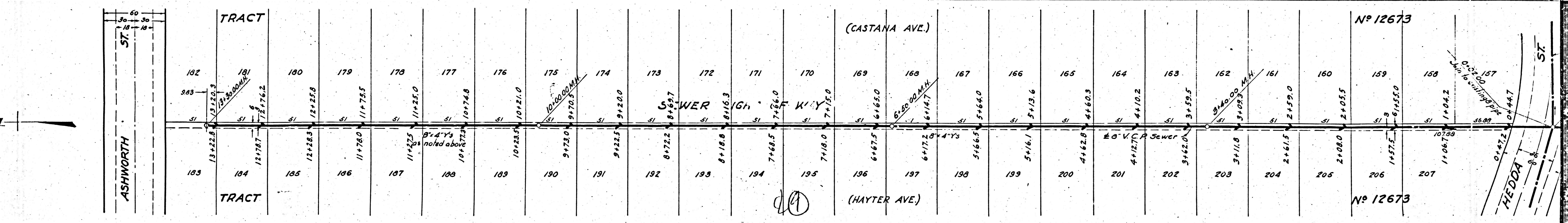
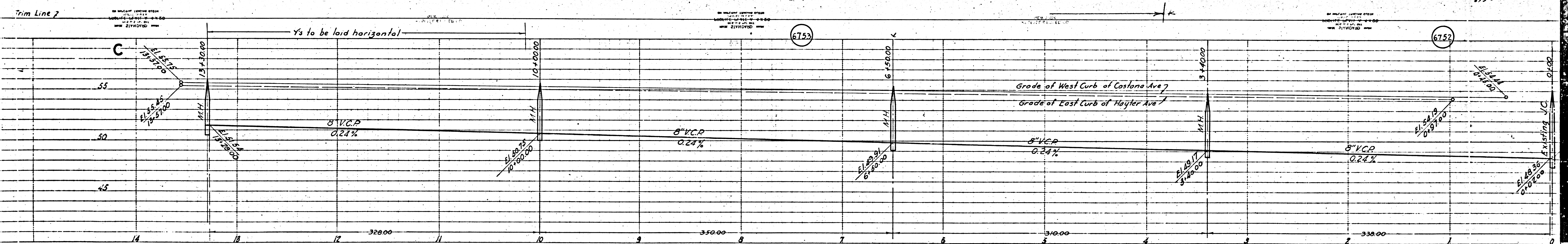
Final C.E. T.I.P. 11/18/46

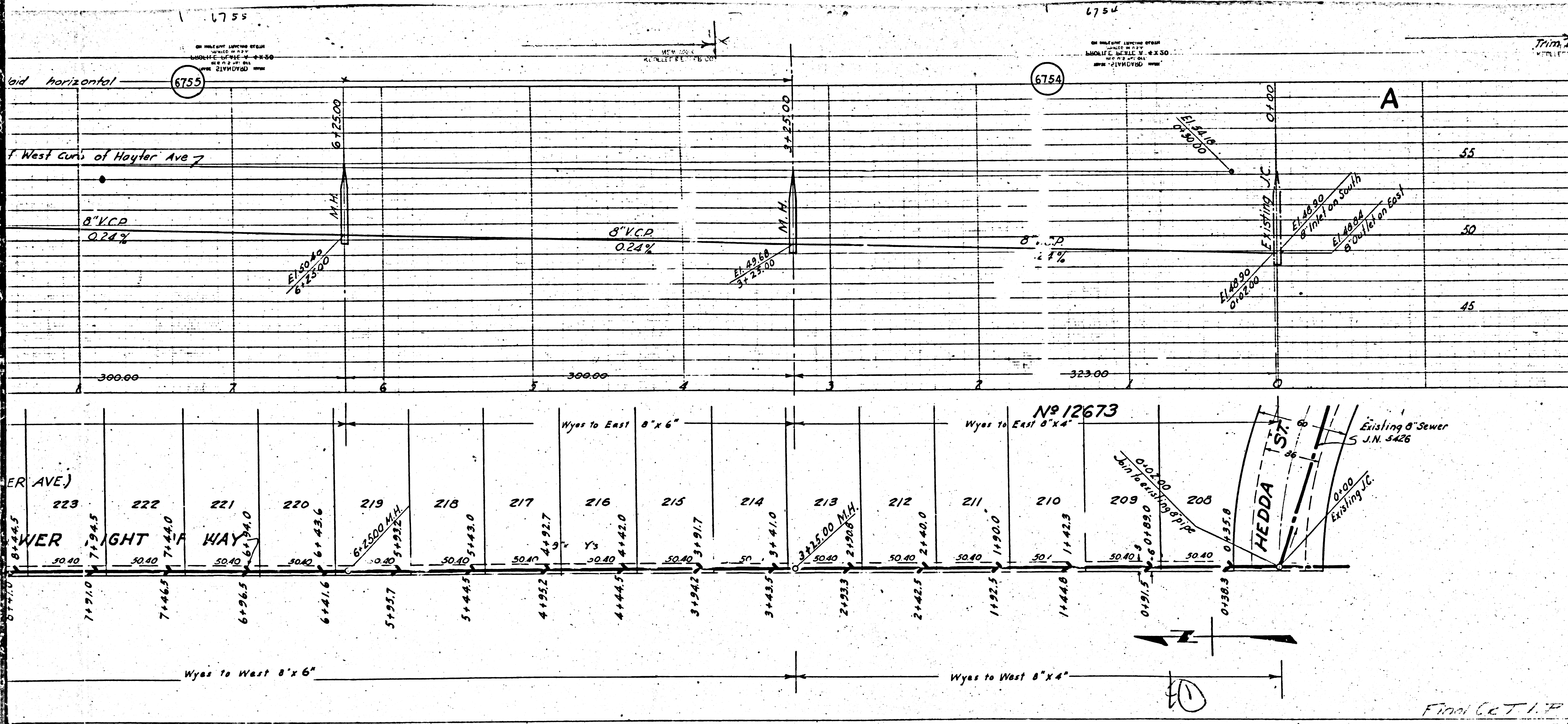
Trim Line 8





ST.	TRACT	TRACT	(PIMENTA AVE)	(OLIVA AVE)
78	12+80.5	12+90.0 M.H.	12+80.5	12+80.5
79	12+40.7	12+40.7	12+40.7	12+40.7
80	11+87.5	11+87.5	11+87.5	11+87.5
81	11+37.2	11+37.2	11+37.2	11+37.2
82	10+90.0	10+90.0	10+90.0	10+90.0
83	10+42.0	10+42.0	10+42.0	10+42.0
84	9+91.0	9+91.0	9+91.0	9+91.0
85	9+41.0	9+41.0	9+41.0	9+41.0
86	8+90.3	8+90.3	8+90.3	8+90.3
87	8+40.5	8+40.5	8+40.5	8+40.5
88	7+90.0	7+90.0	7+90.0	7+90.0
89	7+40.0	7+40.0	7+40.0	7+40.0
90	6+89.5	6+89.5	6+89.5	6+89.5
91	6+39.5	6+39.5	6+39.5	6+39.5
92	5+89.5	5+89.5	5+89.5	5+89.5
93	5+39.5	5+39.5	5+39.5	5+39.5
94	4+89.5	4+89.5	4+89.5	4+89.5
95	4+39.5	4+39.5	4+39.5	4+39.5
96	3+89.5	3+89.5	3+89.5	3+89.5
97	3+39.5	3+39.5	3+39.5	3+39.5
98	2+89.5	2+89.5	2+89.5	2+89.5
99	2+39.5	2+39.5	2+39.5	2+39.5





PROFILE ALIGNMENT AND GRADE OF
SANITARY SEWERS
 TO BE CONSTRUCTED IN
SANITARY SEWER RIGHTS OF WAY
 IN TRACT NO. 12673
ASHWORTH ST
 BETWEEN LAKEWOOD BLVD. AND NORTHERLY LINE TRACT NO. 12673
 PRIVATE CONTRACT NO. 381
 WS 33
 SHEET 2 OF 2 SHEETS
 PREPARED IN THE OFFICE OF
ADAMS & ELLS

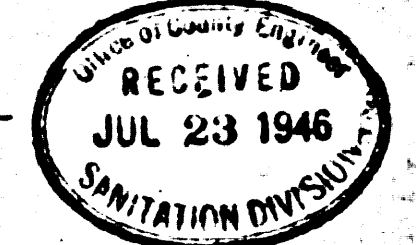
BY: *J. Adams*
 REG. C.E. NO. 67

FOR LEGEND
 SEE PLAN NO. 30-64

FOR CONSTRUCTION NOTES SEE SHEET 1

COUNTY OF LOS ANGELES, CALIFORNIA

APPROVED *[Signature]*
 CHIEF DEPUTY COUNTY ENGINEER



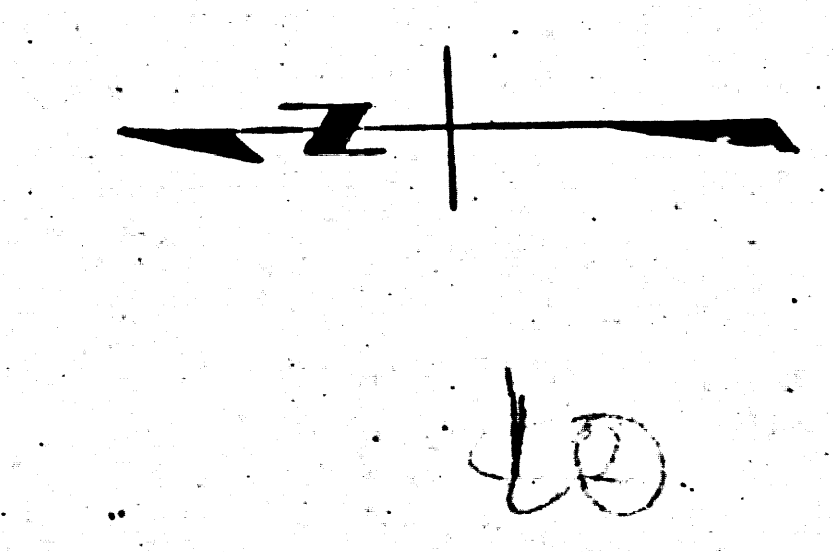
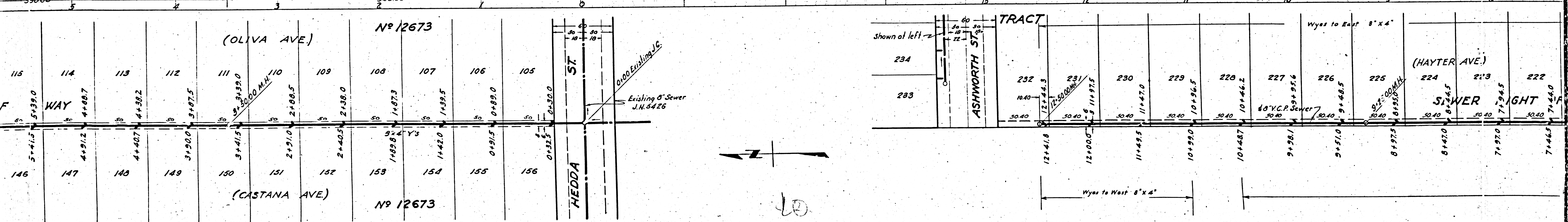
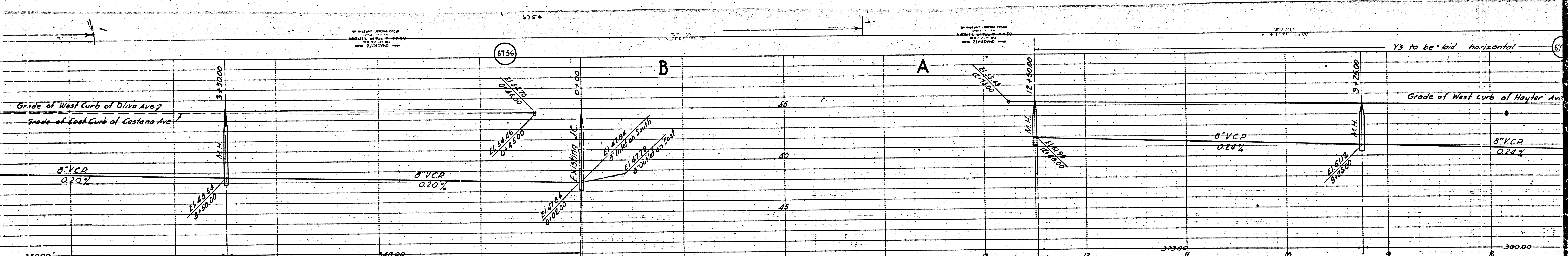
APPROVED *[Signature]*
 CHIEF ENGINEER OF COUNTY
 SANITATION DISTRICT NO. 2

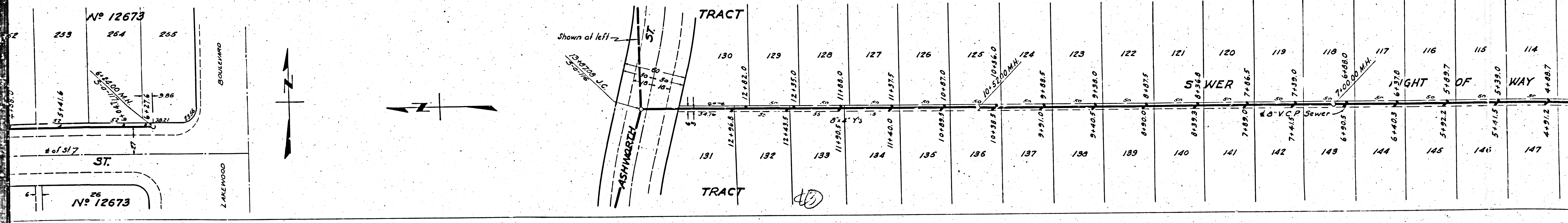
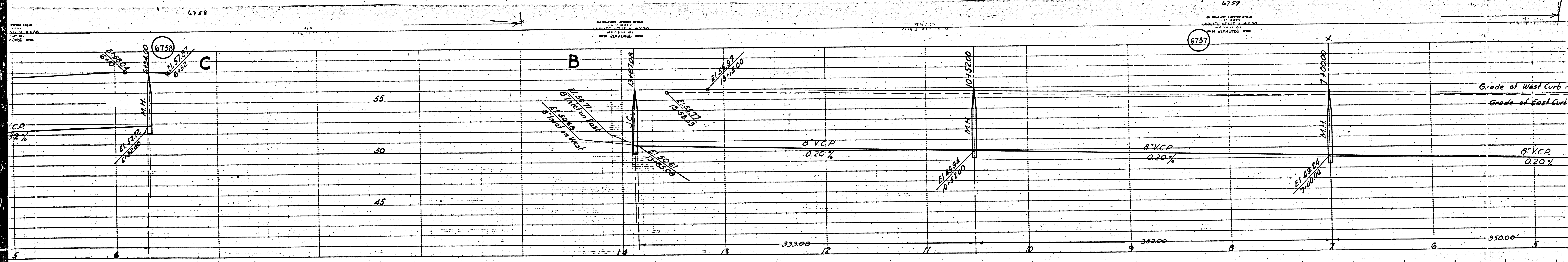
CHECKED BY *[Signature]* 7/17-1946
 OFFICE OF COUNTY ENGINEER, REG. C.E. NO. 6330

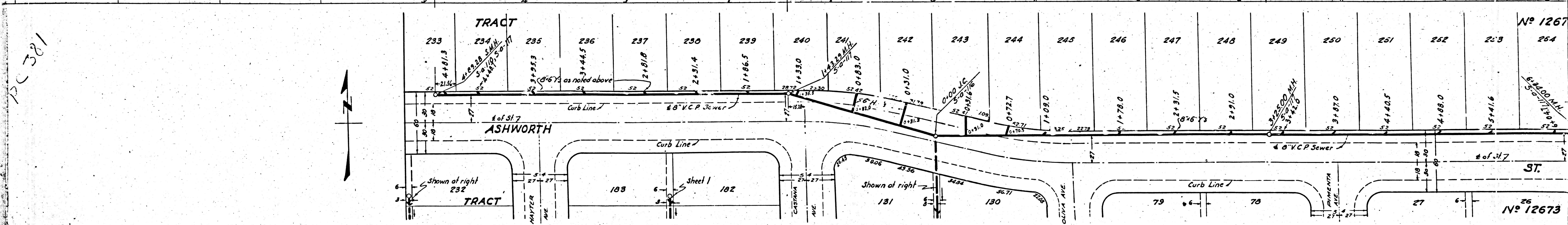
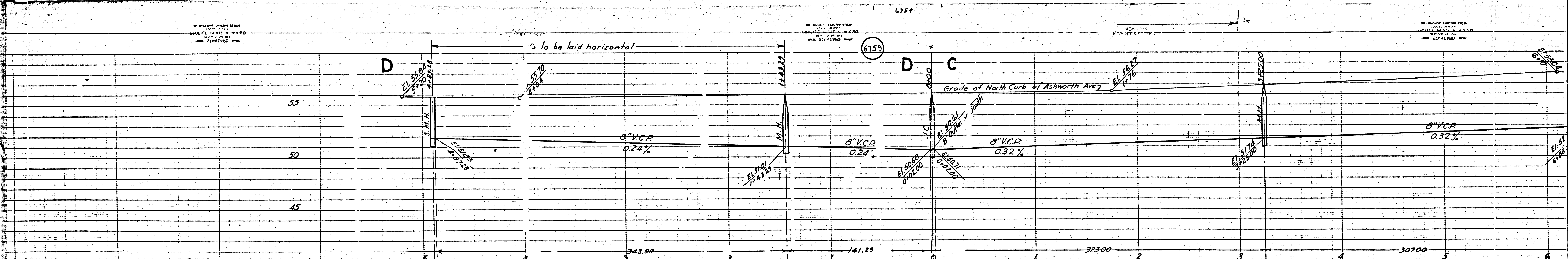
Final C&T I.P. 11/22/46
 trim line

No Changes found on Office Copy

PC 381







PC 381

11

No 1267

No 12673