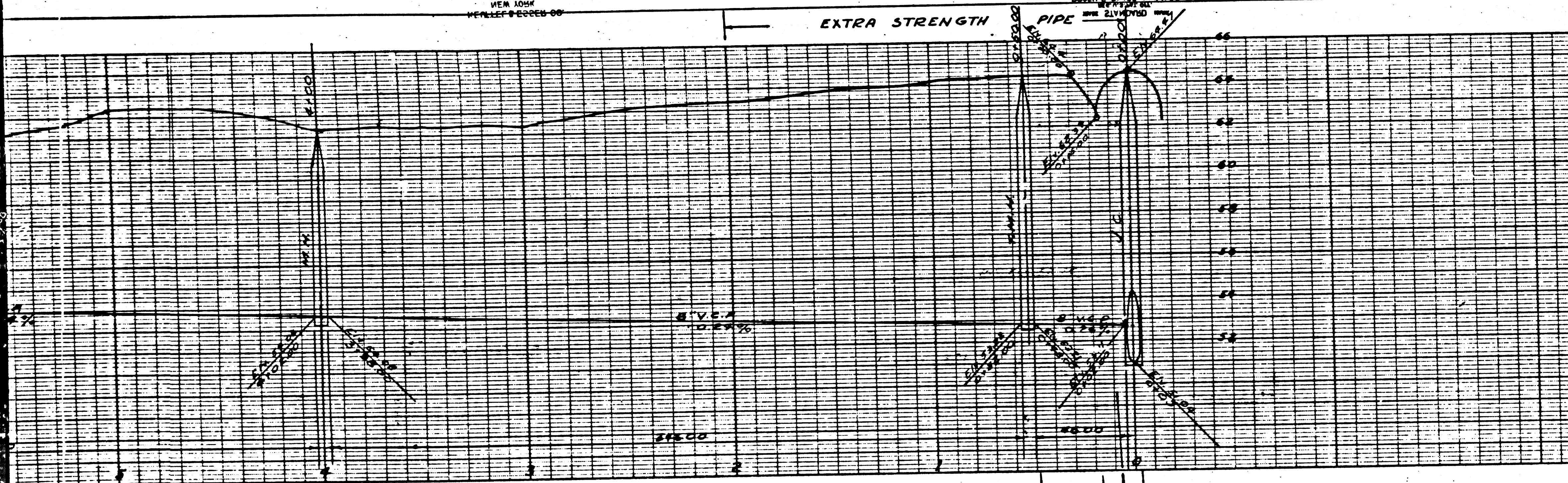


VEN 1054
REVISED 6-22-50

VEN 1004
REVISED 6-22-50

VEN 1004
REVISED 6-22-50

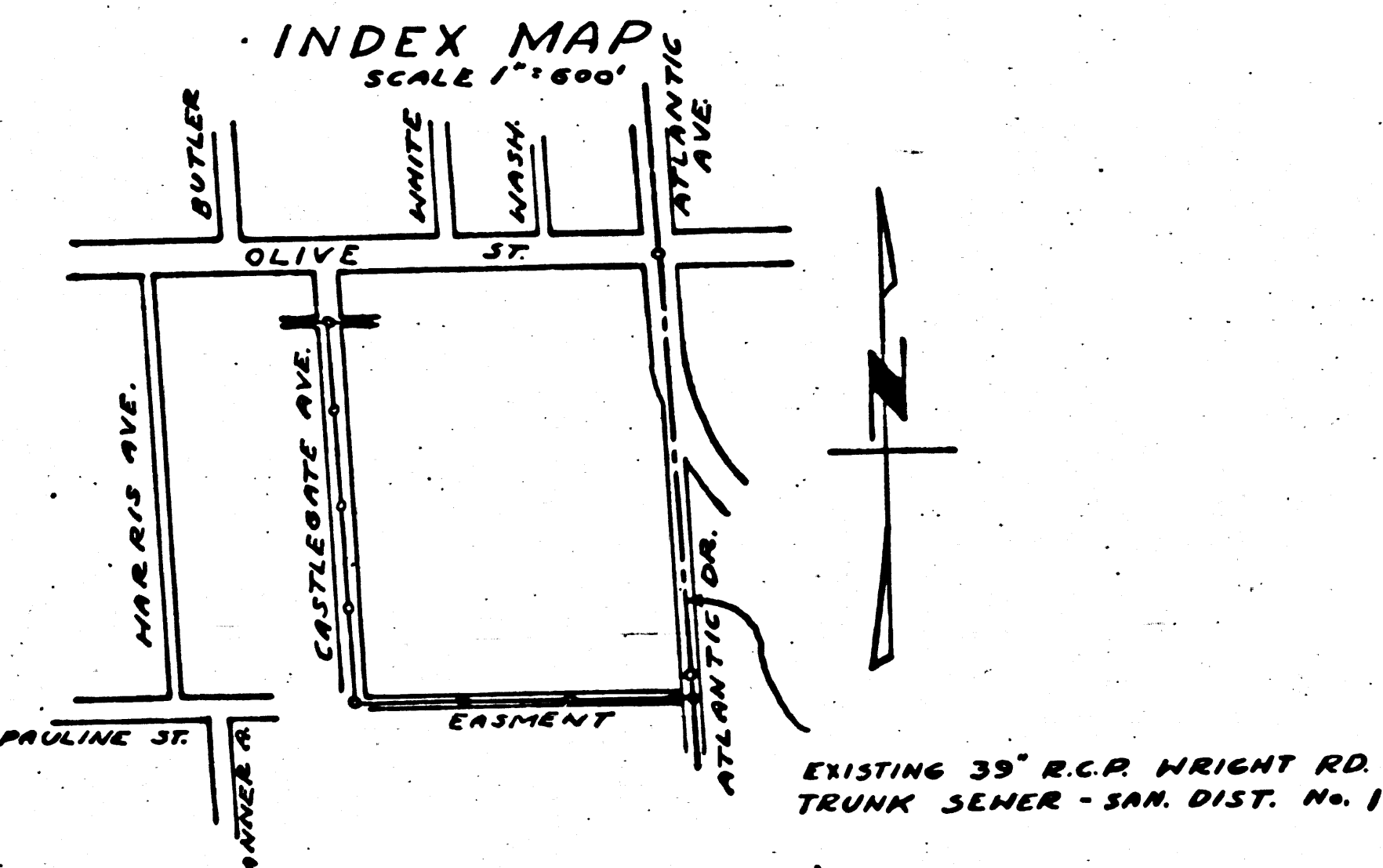
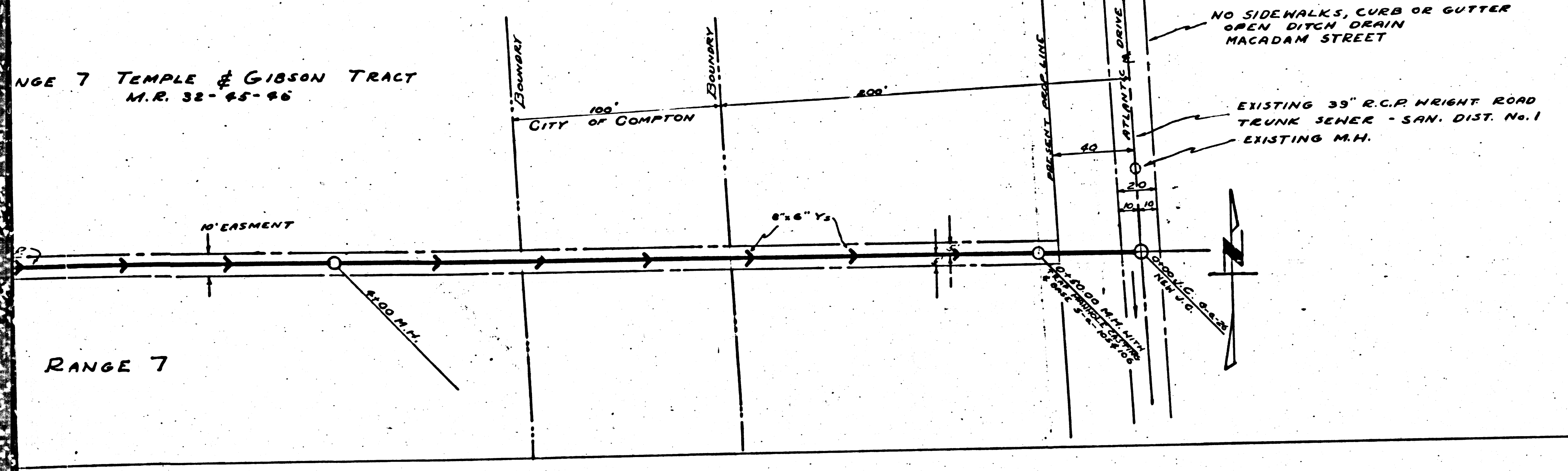
VEN 1004
REVISED 6-22-50



- NOTES:**
1. USE STANDARD MANHOLE FRAMES & COVERS 30" DIA.
 2. USE STANDARD STRENGTH PIPE, EXCEPT AS NOTED.
 3. USE CEMENT MORTAR FOR ALL VITRIFIED CLAY PIPE JOINTS.
 4. RESURFACE ALL TRENCH WITHIN PAVED AREA TO MEET LOS ANGELES COUNTY ROAD DEPT. OR STATE HIGHWAY REQUIREMENTS.
 5. CONSTRUCT HOUSE CONNECTIONS WITH INVERT AT PROPERTY LINE 4.5 FEET BELOW CURB GRADE.
 6. ALL STRUCTURES SHALL BE BUILT FURNER STRUCTURES 3-4-100.
 7. CONSTRUCT TOPS OF ALL STRUCTURES IN FRONT OF ANY ABOVE FINISHED GRADE.
 8. IN REPRESENTATIVE OF THE COUNTY ENGINEER WILL SURVEY OR LAY OUT ANY PORTION OF THE WORK.
 9. THE OWNER OR HIS AUTHORIZED REPRESENTATIVE SHALL FURNISH THE COUNTY ENGINEER WITH SUFFICIENT INFORMATION TO LOCATE HOUSE CONNECTIONS & SERVICES, & SHALL PROVIDE STAKES FOR THEM AT THEIR PROPER LOCATIONS WITH STATIONING PLAINLY MARKED. ANY CHANGE OF LOCATION SHALL BE REQUESTED IN WRITING BY THE OWNER BE THE REPRESENTATIVE. THE REVISIONS SHALL BE MADE ON THIS DRAWING WITHOUT REPEATING THE WORKS THEREON.

PROFILE, ALIGNMENT AND GRADE OF
SANITARY SEWERS
 TO BE CONSTRUCTED IN
CASTLEGATE AVE.
 BETWEEN OLIVE ST AND PAULINE ST
 SANITARY SEWER RIGHT OF WAY
 IN L.O.F.S. RANGE 7 TEMPLE & GIBSON TRACT
 M.R. 32-45-46
PRIVATE CONTRACT No. 382
M.S. 32

PREPARED IN THE OFFICE OF
ROBIN A. GRAVES COMPANY
 BY *Robin A. Graves*
 FOR LEGEND
 RECORD NO. 6107



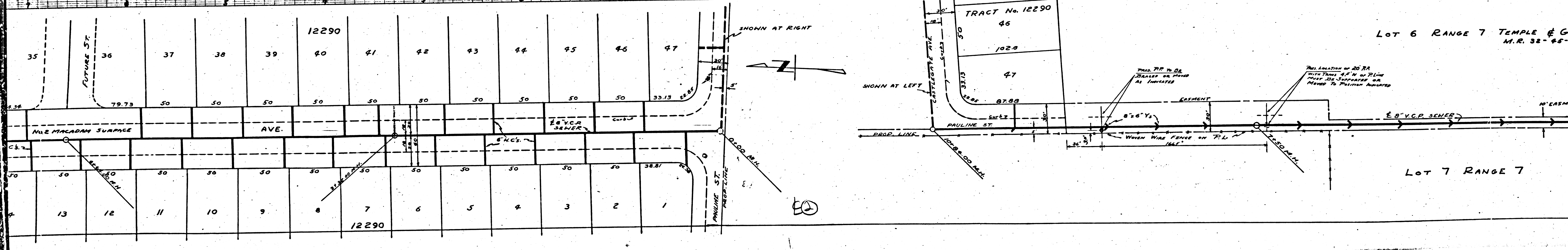
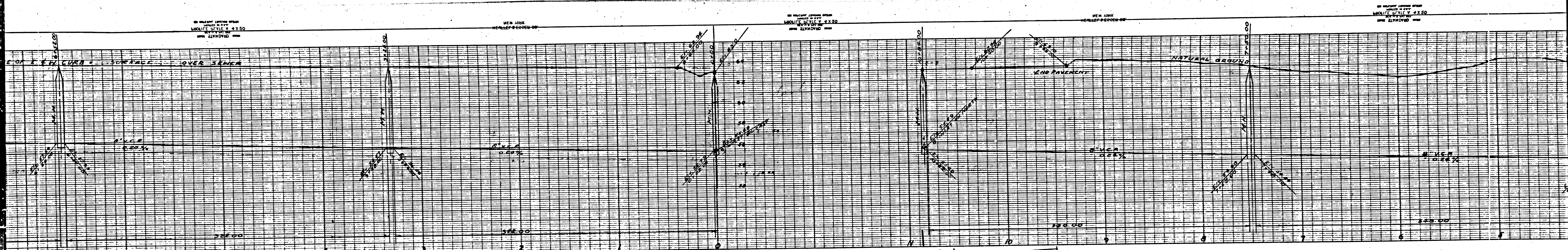
NOTE:
 GRADES TO WHICH THIS IMPROVEMENT IS TO BE CONSTRUCTED ARE SHOWN ON PLANS AND PROFILE. GRADE POINTS FOR TOP OF CURB, CENTER LINE OF STREETS OR CENTER LINE OF ALLEY ARE SHOWN BY CIRCLES ON PROFILES. AT ALL POINTS BETWEEN DESIGNATED POINTS THE GRADE SHALL BE ESTABLISHED SO AS TO CONFORM TO A STRAIGHT LINE DRAWN BETWEEN SAID DESIGNATED POINTS.
 ELEVATIONS ARE IN FEET ABOVE U.S.C. & G.S. DATUM OR MEAN SEA LEVEL.
 THIS DRAWING AND THE DATA HEREON ARE HEREBY MADE A PART OF THE SPECIFICATIONS. WORK SHALL BE CONSTRUCTED ACCORDING TO SPECIFICATIONS ON FILE IN THE OFFICE OF THE COUNTY ENGINEER AND SHALL BE PROSECUTED ONLY IN THE PRESENCE OF THE COUNTY ENGINEER.
 BEFORE WORK CAN BE STARTED, THE CONTRACTOR MUST OBTAIN A PERMIT TO EXCAVATE IN COUNTY STREETS FROM THE L.A. COUNTY ROAD DEPT., 1108 HALL OF RECORDS, AND MAKE A DEPOSIT WITH THE COUNTY ENGINEER, 700 UNION LEAGUE BUILDING, SUFFICIENT TO COVER THE COST OF CONSTRUCTION INSPECTION AND RECORD PLANS.
 IF WORK IS TO BE DONE IN A STATE HIGHWAY, A PERMIT MUST BE OBTAINED FROM THE STATE OF CALIFORNIA, DIVISION OF HIGHWAYS, 808 STATE BUILDING AFTER MAKING THE DEPOSIT WITH THE COUNTY ENGINEER.

APPROVED *Don W. Robins*
 City Engineer - City of Compton

APPROVED *[Signature]*
 Chief Deputy County Engineer

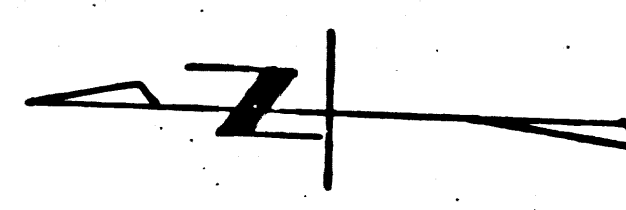
APPROVED *[Signature]*
 CHIEF ENGINEER OF COUNTY
 SANITATION DISTRICT No. 1

CHECKED BY *[Signature]*
 OFFICE OF COUNTY ENGINEER
 REC. C.E. 74-630

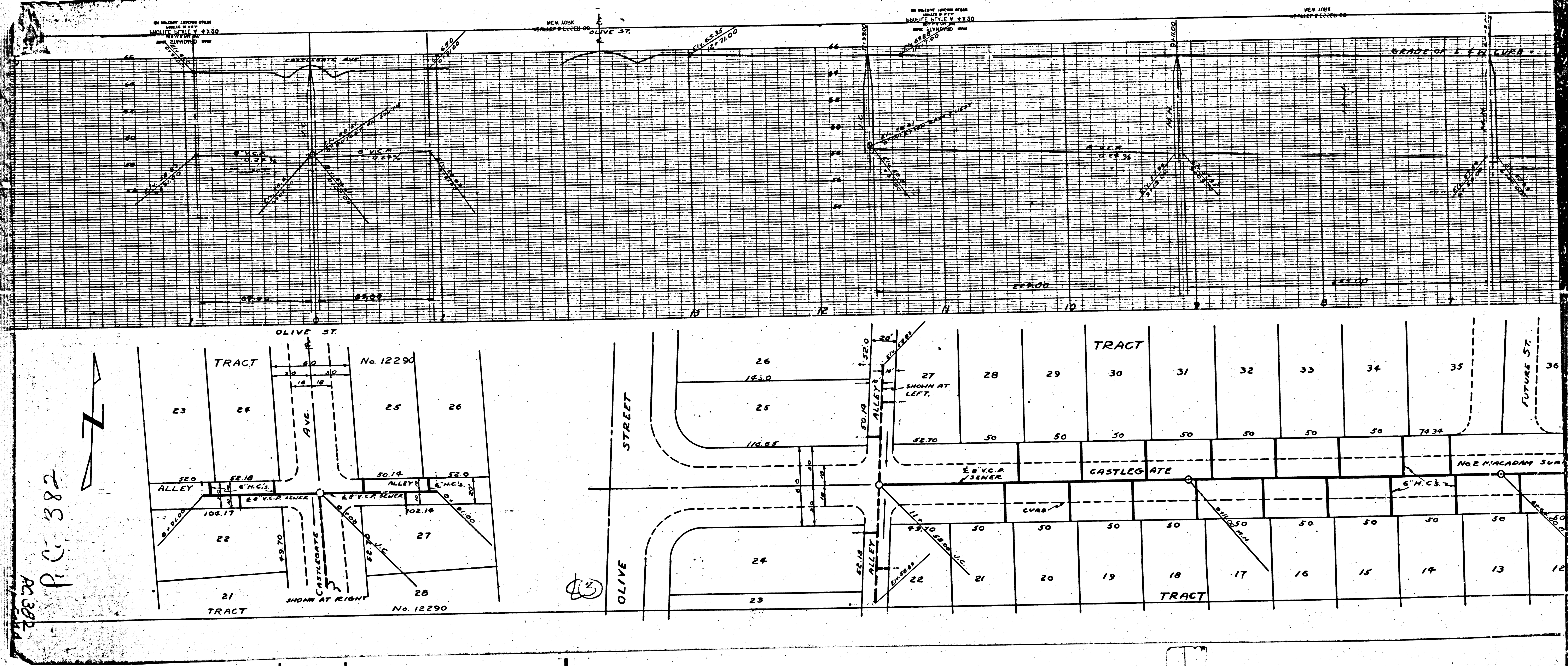


LOT 6 RANGE 7 TEMPLE & G
M.R. 32-45

LOT 7 RANGE 7



(2)



P.C. 382
 AC 382A