

Trim Line 7

- B.M. Elev. 77.45
Ryon Ave & Compton Blvd.
Spk. in Part. E Intersections
- (1) USE STANDARD MANHOLE FRAMES AND COVERS, S-8-117.
 - (2) USE STANDARD STRENGTH PIPE, EXCEPT AS NOTED.
 - (3) USE CEMENT MORTAR FOR ALL VITRIFIED CLAY PIPE JOINTS.
 - (4) RESURFACE ALL TRENCH WITHIN PAVED AREA TO MEET LOS ANGELES COUNTY ROAD DEPT. REQUIREMENTS.
 - (5) CONSTRUCT HOUSE CONNECTIONS WITH INVERT AT PROPERTY LINE 4 FEET BELOW CURB GRADE.
 - (6) ENCASE 4 FEET OF SEWER AT POINTS OF INTERFERENCE WITH POLES AS PER S-8-6.
 - (7) ALL STRUCTURES SHALL BE BRICK SEWER STRUCTURES S-8-104.

NOTE: NO REPRESENTATIVE OF THE COUNTY ENGINEER WILL SURVEY OR LAY OUT ANY PORTION OF THE WORK. THE OWNER OR HIS REPRESENTATIVE SHALL FURNISH THE COUNTY ENGINEER WITH GRADE SHEETS AND STATIONS OF ALL HOUSE CONNECTIONS AND BRANCHES AND SHALL PROVIDE STAKES FOR THEM AT THEIR PROPER LOCATIONS WITH STATIONING PLAINLY MARKED. ANY CHANGE OF LOCATION SHALL BE REQUESTED IN WRITING BY THE OWNER OR HIS REPRESENTATIVE. NO REVISIONS SHALL BE MADE IN THESE PLANS WITHOUT APPROVAL OF THE COUNTY ENGINEER.

PROFILE ALIGNMENT AND GRADE OF
SANITARY SEWERS
TO BE CONSTRUCTED IN
COMPTON BLVD.
BETWEEN RYON AVE. AND CLARK AVE.
FAYWOOD ST.
BETWEEN RYON AVE AND BETTY JEAN AVE.
MANDALE AVE.
BETWEEN FAYWOOD ST. AND ARDIS AVE.

PRIVATE CONTRACT NO. 383
W.S. 33
SHEET 1 OF 2 SHEETS
MAY 1946

PREPARED IN THE OFFICES OF
SEABOARD ENGINEERING CO.

BY: *Harve A. Robb*
REG. C.E. NO. 2059

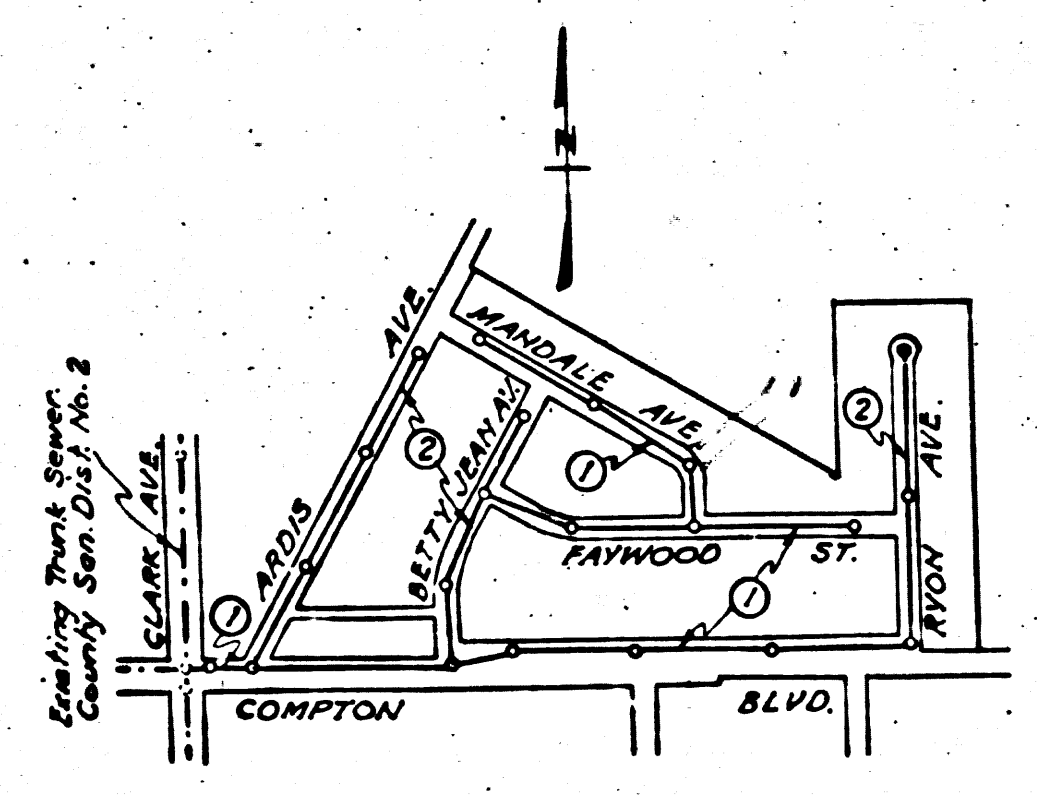
FOR LEGEND
SEE PLAN NO. S-8-64

NOTE: GRADES TO WHICH THIS IMPROVEMENT IS TO BE CONSTRUCTED ARE SHOWN ON PLANS AND PROFILE. GRADE POINTS FOR TOP OF CURB, CENTER LINE OF STREET OR CENTER LINE OF ALLEY ARE SHOWN BY CIRCLES ON PROFILES. AT ALL POINTS BETWEEN DESIGNATED POINTS THE GRADE SHALL BE ESTABLISHED SO AS TO CONFORM TO A STRAIGHT LINE DRAWN BETWEEN SAID DESIGNATED POINTS. ELEVATIONS ARE IN FEET ABOVE U.S.C. & G.S. DATUM OR MEAN SEA LEVEL. THIS DRAWING AND THE DATA HEREON ARE MADE BY AND ARE A PART OF THE SUBMITTALS. WORK SHALL BE CONSTRUCTED ACCORDING TO SPECIFICATIONS ON FILE IN THE OFFICE OF THE COUNTY ENGINEER AND SHALL BE PROSECUTED ONLY IN THE PRESENCE OF THE COUNTY ENGINEER. BEFORE WORK CAN BE STARTED THE CONTRACTOR MUST OBTAIN A PERMIT TO EXCAVATE IN COUNTY STREETS FROM THE L.A. COUNTY ROAD DEPT. HAVE ALL RECORDS, AND MAKE A DEPOSIT WITH THE COUNTY ENGINEER, 700 UNION LEAGUE BUILDING, SUFFICIENT TO COVER THE COST OF CONSTRUCTION INSPECTION AND RECORD PLANS.

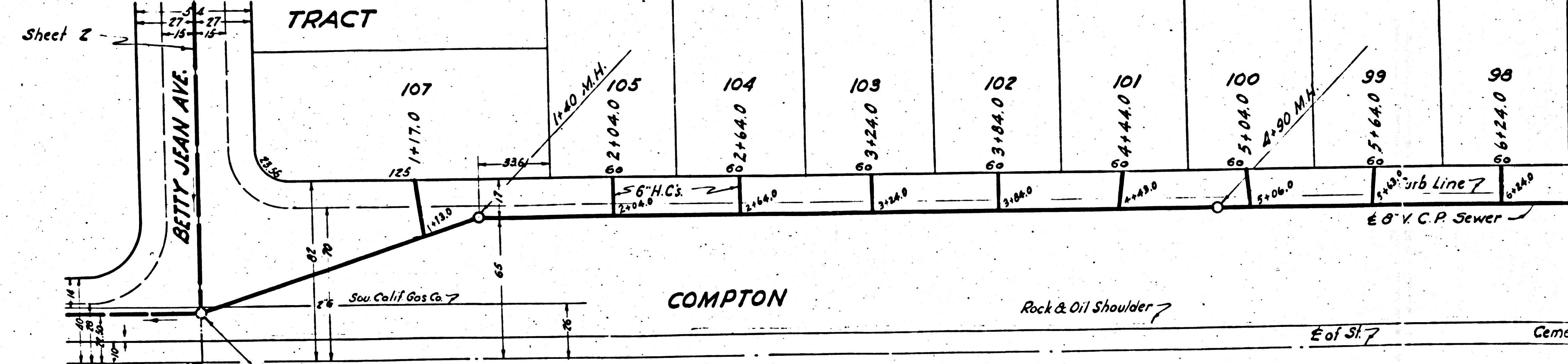
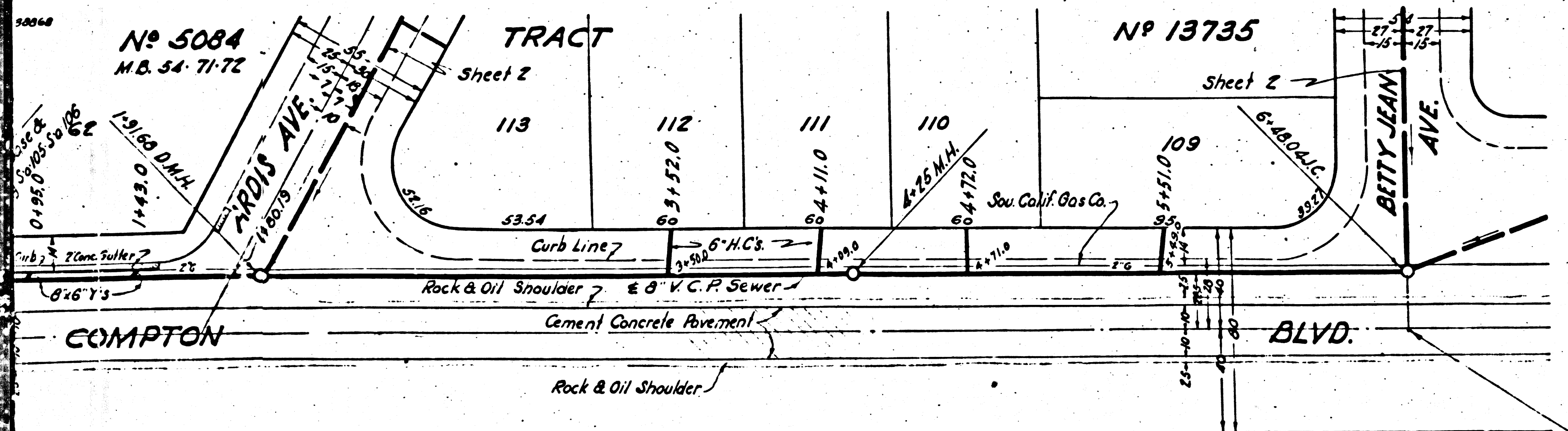
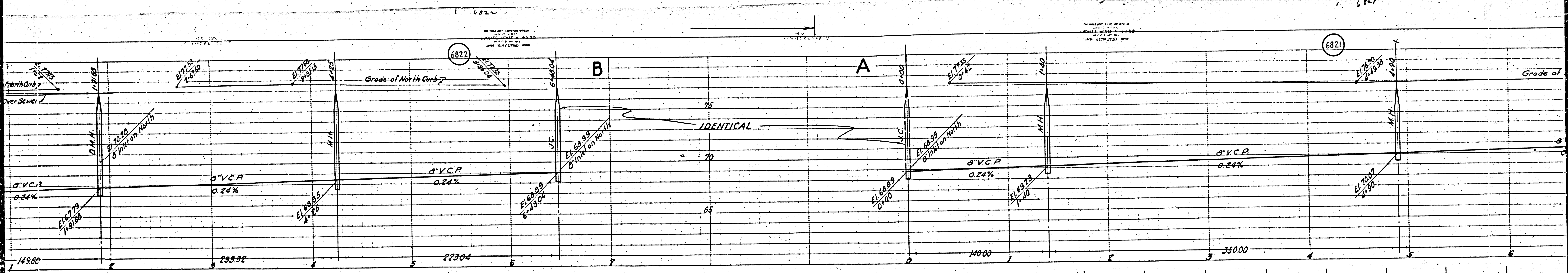
COUNTY OF LOS ANGELES, CALIFORNIA.

APPROVED: *Alfred J. Berra*
COUNTY ENGINEER
APPROVED: *C.K. Compton*
ASST. COUNTY ENGINEER OF COUNTY SANITATION DISTRICT NO. 2

CHECKED BY: *Alfred J. Berra* 9/19 1946
OFFICE OF COUNTY ENGINEER, 700 U.S. NO. 6380

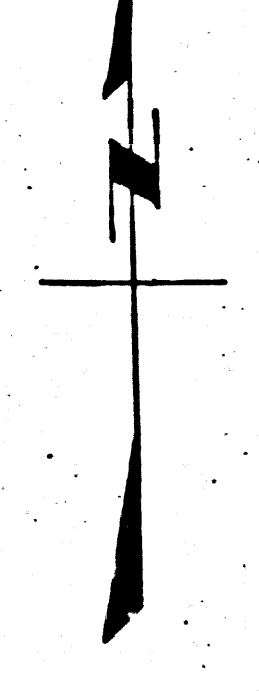


RECEIVED SEP 16 1946 SANITATION DISTRICT NO. 2



60 Exist. J.C.
 17 8\"/>

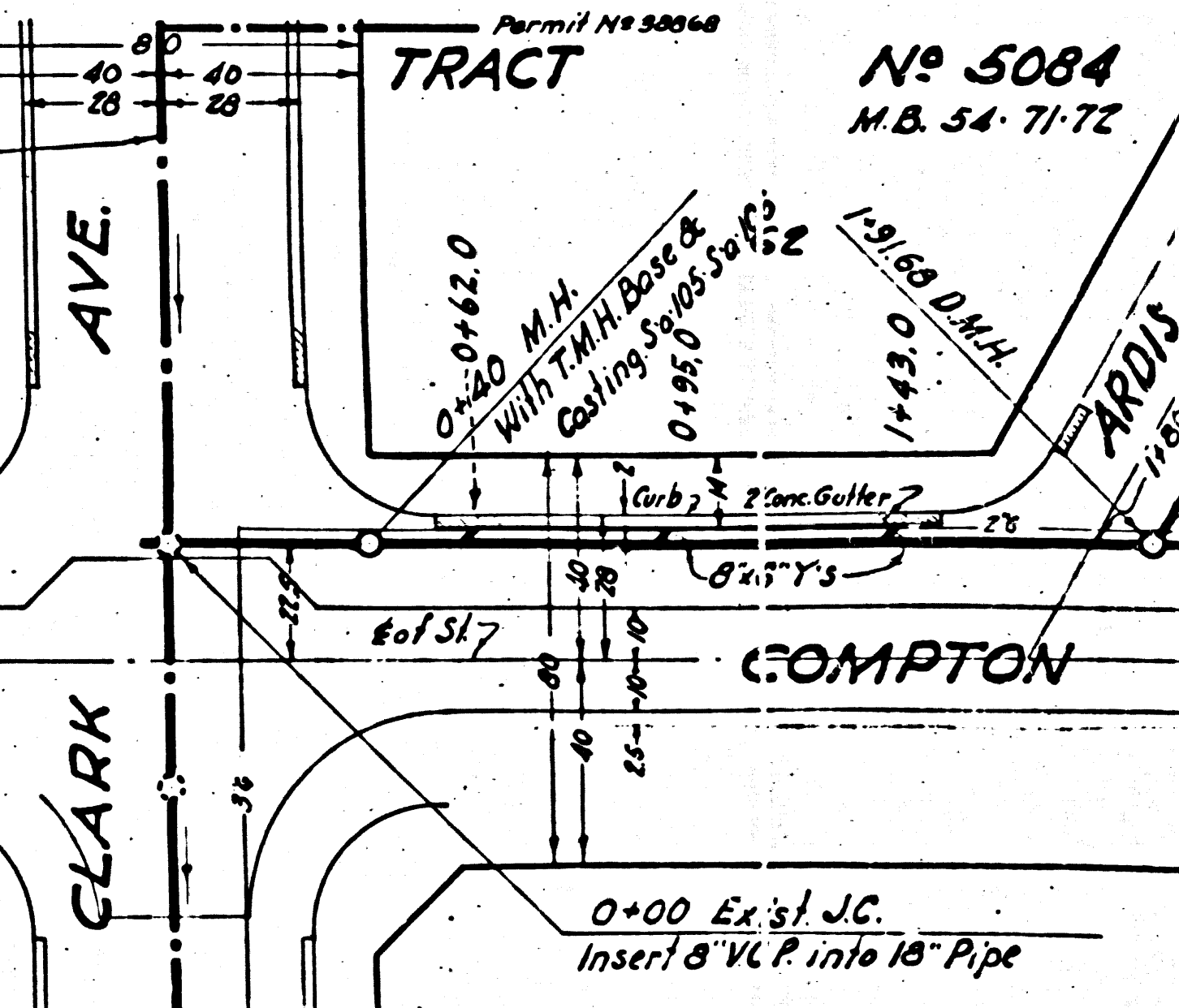
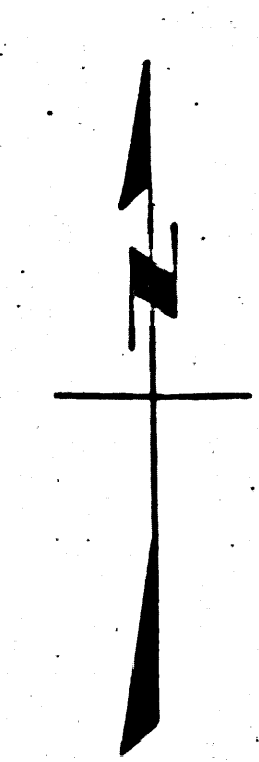
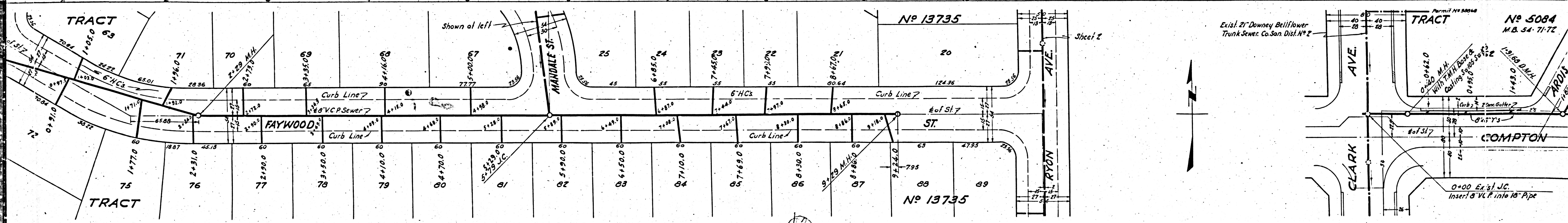
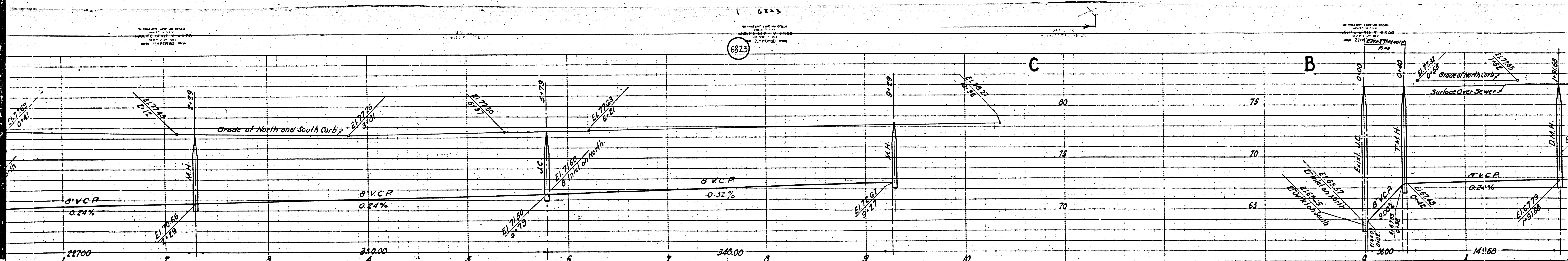
IDENTICAL POINTS



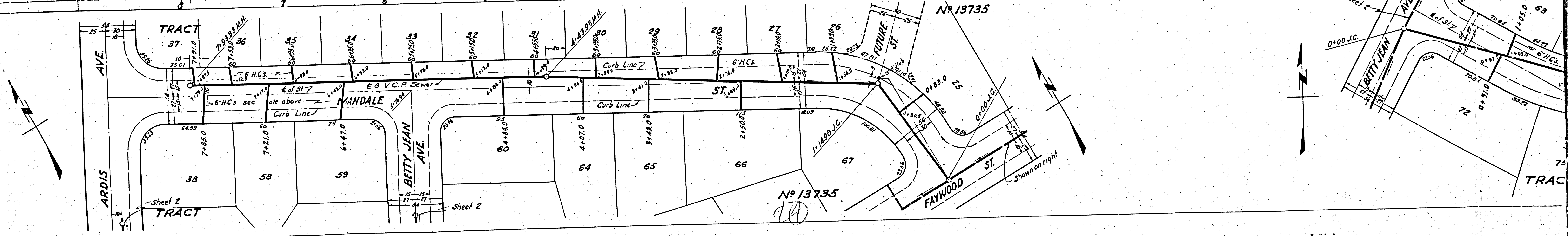
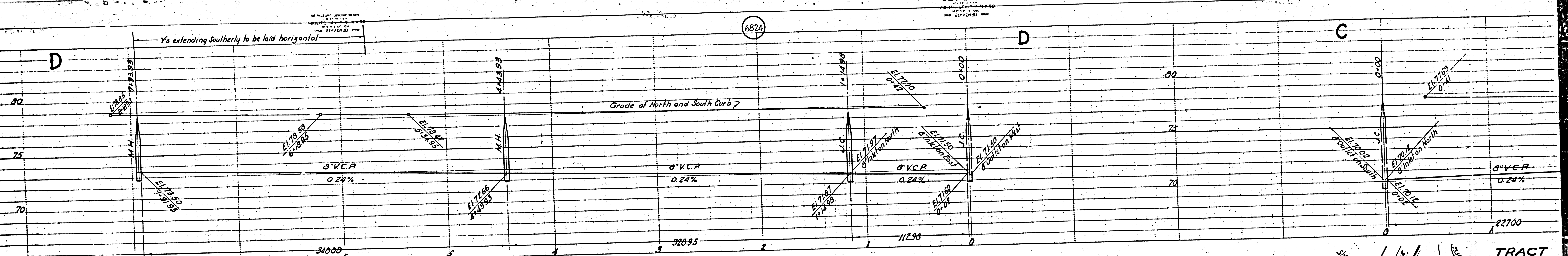
60

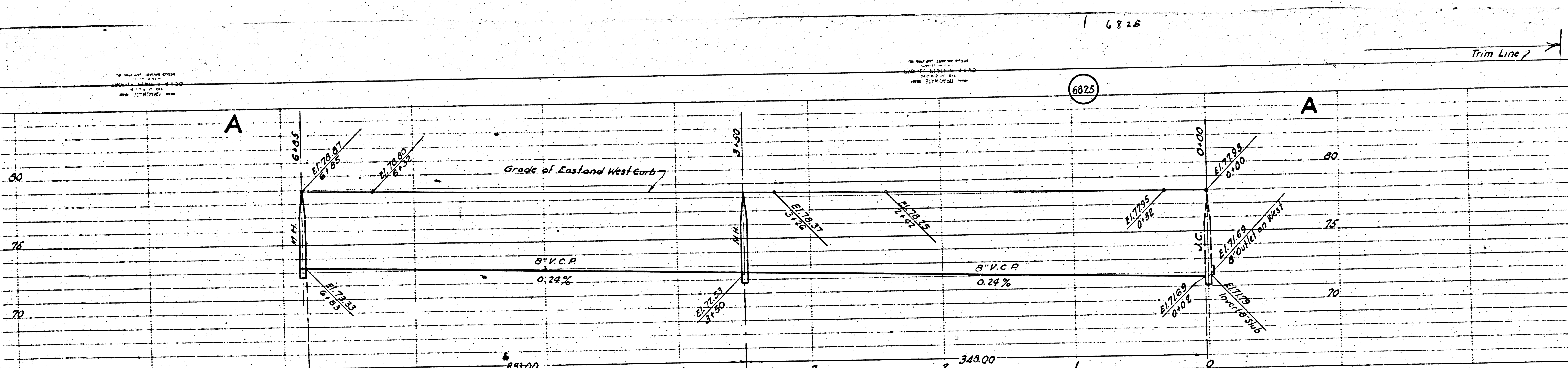
110

6823



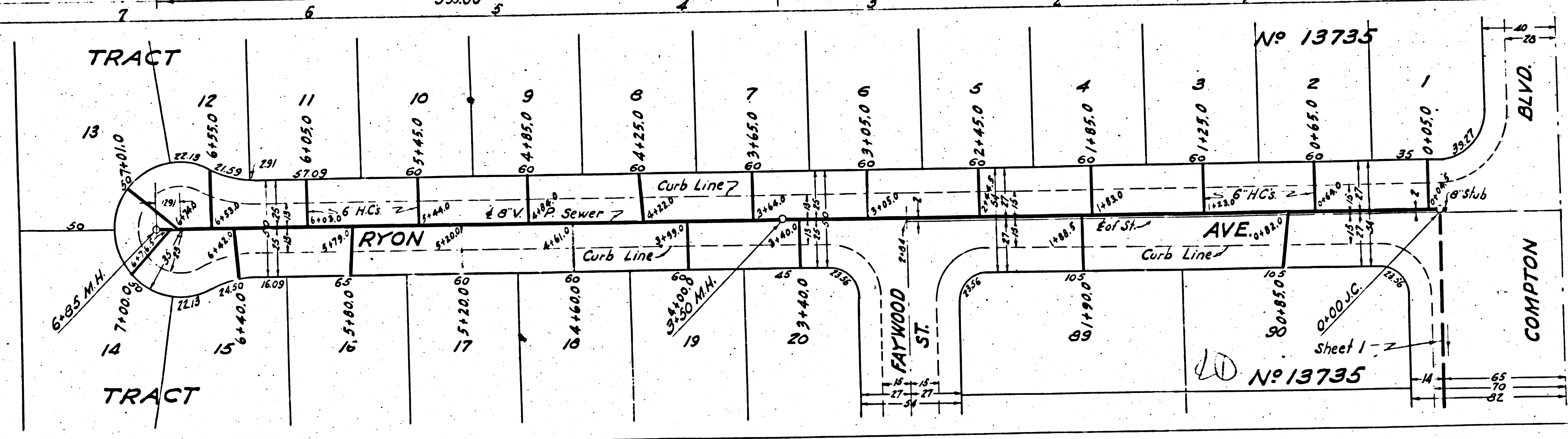
6824





PROFILE, ALIGNMENT AND GRADE OF
SANITARY SEWERS
TO BE CONSTRUCTED IN
RYON AVE.
 BETWEEN COMPTON BLVD AND THE NORTHERLY TERMINUS OF RYON AVE.
BETTY JEAN AVE.
ARDIS AVE.
 BETWEEN COMPTON BLVD AND MANDALE AVE.

PRIVATE CONTRACT NO. 383
 W.S. 33
SHEET 2 OF 2 SHEETS
 MAY 1946
 PREPARED IN THE OFFICES OF
SEABOARD ENGINEERING CO.
 BY: *Mark A. Roben*
 REG. C.E. NO. 2053

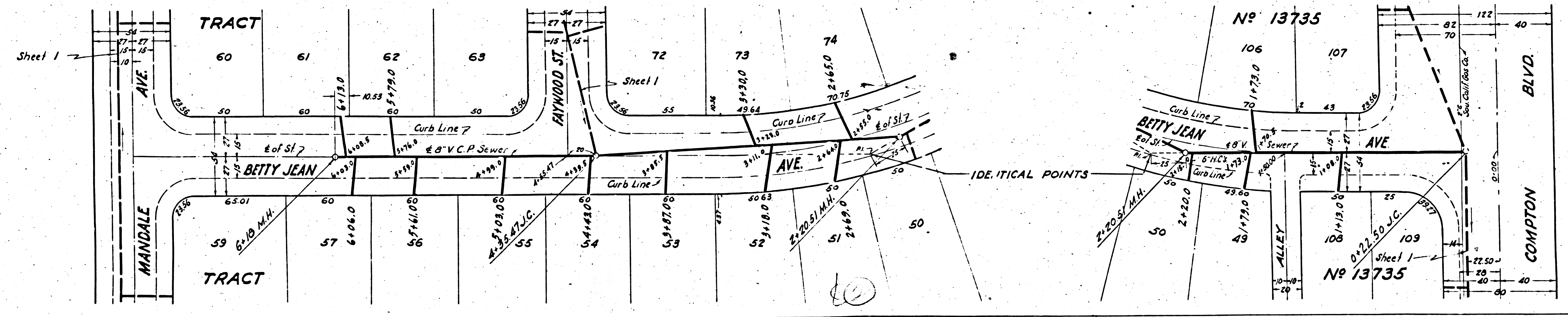
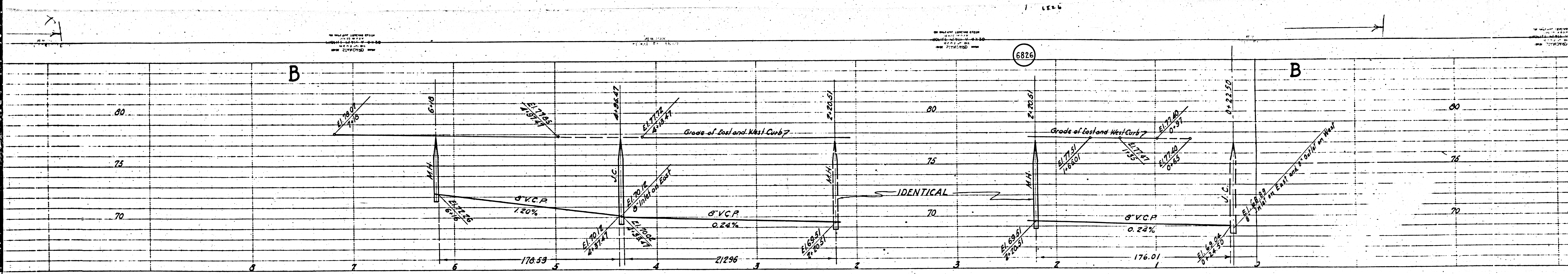


FOR CONSTRUCTION NOTES SEE SHEET 1
 COUNTY OF LOS ANGELES, CALIFORNIA
 APPROVED: *Alfred Jones*
 COUNTY ENGINEER
 APPROVED: *C. K. Compton*
 ASST. CHIEF ENGINEER OF COUNTY
 SANITATION DISTRICT NO. 2
 CHECKED BY: *W. J. ...* 8/12 1946
 OFFICE OF COUNTY ENGINEER REG. C.E. NO. 6830

PC 383

RECEIVED
 SEP 16 1946
 SANITATION DISTRICT NO. 2

Final C.R.T. 2/4/47
 Trim Line



6826

B

B

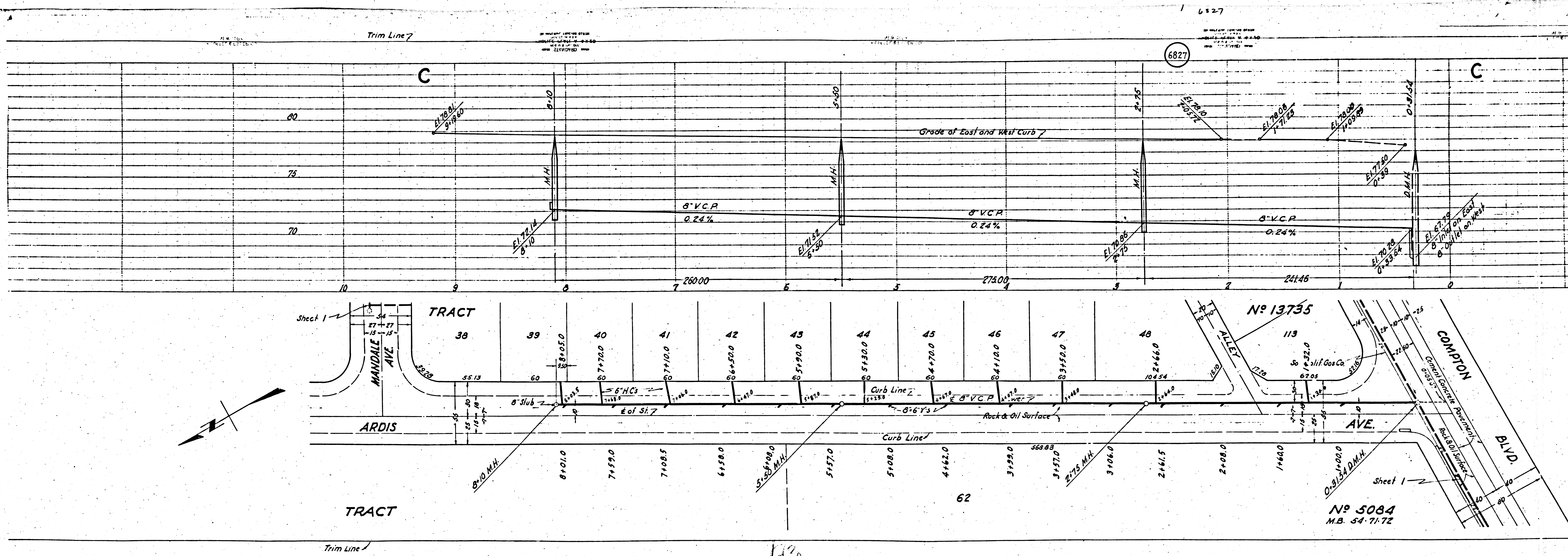
IDENTICAL POINTS

Sheet 1

Sheet 1

Sheet 1

P.C. 383



EG