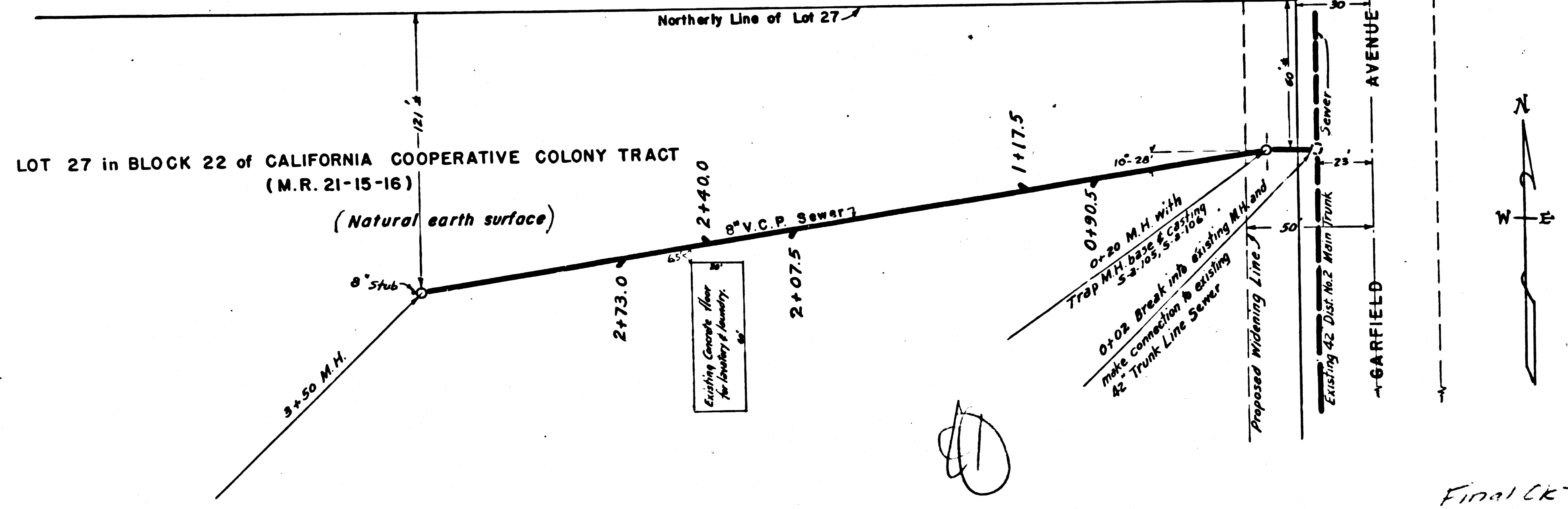


Grades to which this improvement is to be constructed are shown on plans and profile. Elevations are in feet above U.S.G.S. datum or mean sea level. This drawing and the data hereon are hereby made a part of the Specifications. Work shall be constructed according to specifications on file in the office of the County Engineer and shall be prosecuted only in the presence of the County Engineer. Before work can be started, the contractor must obtain a permit to excavate in County streets from the L.A. County Road Department, 1104 Hall of Records, and make a deposit with the County Engineer, 700 Fashion League Building, sufficient to cover the cost of construction inspection and record plans. No representative of the County Engineer will survey or lay out any portion of the work. The owner or his authorized representative shall furnish the County Engineer with grade sheets and stations of all house connections and Y branches, and shall provide stakes for them at their proper locations with stationing plainly marked. Any change of location shall be requested in writing by the owner or his representative. No revisions shall be made in these plans without approval of the County Engineer.

Use special manhole frames and covers, S-a-109.  
 Use standard strength pipe.  
 Use cement mortar for all vitrified clay pipe joints.  
 All structures shall be brick sewer structures, S-a-104.  
 Wyes to be provided and spaced for drain connections.



PROFILE ALIGNMENT AND GRADE OF  
**SANITARY SEWER**  
 TO BE CONSTRUCTED WESTERLY FROM  
**GARFIELD AVENUE**  
 BETWEEN JACKSON ST. AND HARRISON ST.  
 In Lot 27 in Block 22 of California Cooperative Colony Tract  
 (M.R. 21-15-16)

PRIVATE CONTRACT NO 389  
 W.S. 32

SCALE Vertical 1" = 4'  
 Horizontal 1" = 40'

PREPARED IN OFFICE OF GLEN ROOD  
 By Glen Rood R.E. #2093.

APPROVED, Alfred Jones  
 COUNTY ENGINEER

CHECKED BY M. S. Sullivan G-10-1946.  
 OFFICE OF COUNTY ENGINEER REG. C.E. NO. 5823

APPROVED, \_\_\_\_\_  
 CHIEF ENGINEER OF COUNTY  
 SANITATION DISTRICT NO 2



2835

Final CK-TIP 12/4/46



