

1. USE STANDARD MANHOLE FRAMES AND COVERS. S=116 EXCEPT AS NOTED.
 2. USE STANDARD STRENGTH PIPE EXCEPT AS NOTED.
 3. USE CEMENT MORTAR FOR ALL VITRIFIED CLAY PIPE JOINTS.
 4. RESURFACE ALL TRENCH WITHIN PAVED AREA TO MEET LOS ANGELES COUNTY ROAD DEPT. REQUIREMENTS.
 5. CONSTRUCT HOUSE CONNECTIONS WITH INVERT AT PROPERTY LINE 5 FEET BELOW CURB GRADE EXCEPT AS NOTED.
 6. ENCASE FOUR FEET OF SEWER AT POINTS OF INTERFERENCE WITH POLES AS PER S-6.
 7. ALL STRUCTURES SHALL BE BRICK SEWER STRUCTURES S=104.
 8. CONSTRUCT TOPS OF ALL STRUCTURES IN RIGHTS OF WAY 6\"/>
- No representative of the County Engineer will survey or inspect any portion of the work. The owner or his authorized representative shall furnish the County Engineer with grade sheets and stationing of all house connections and Y-branches and shall provide stakes for them at their proper locations with stationing plainly marked. Any change of location shall be requested in writing by the owner or his representative. No revisions shall be made in these plans without approval of the County Engineer.*

PROFILE, ALIGNMENT AND GRADE OF
SANITARY SEWERS
 TO BE CONSTRUCTED IN
135TH ST.
 BETWEEN FIRST ALLEY EAST OF AVALON BLVD.
 AND
 FIRST ALLEY WEST OF AVALON BLVD.
 BETWEEN 136TH ST. AND 132ND ST.

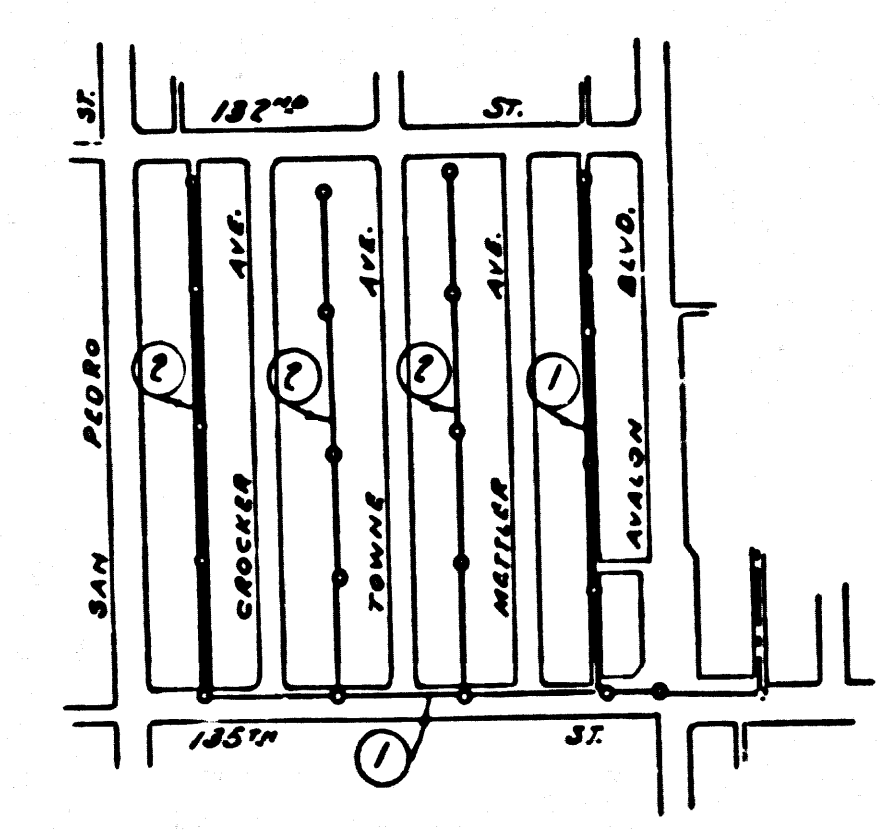
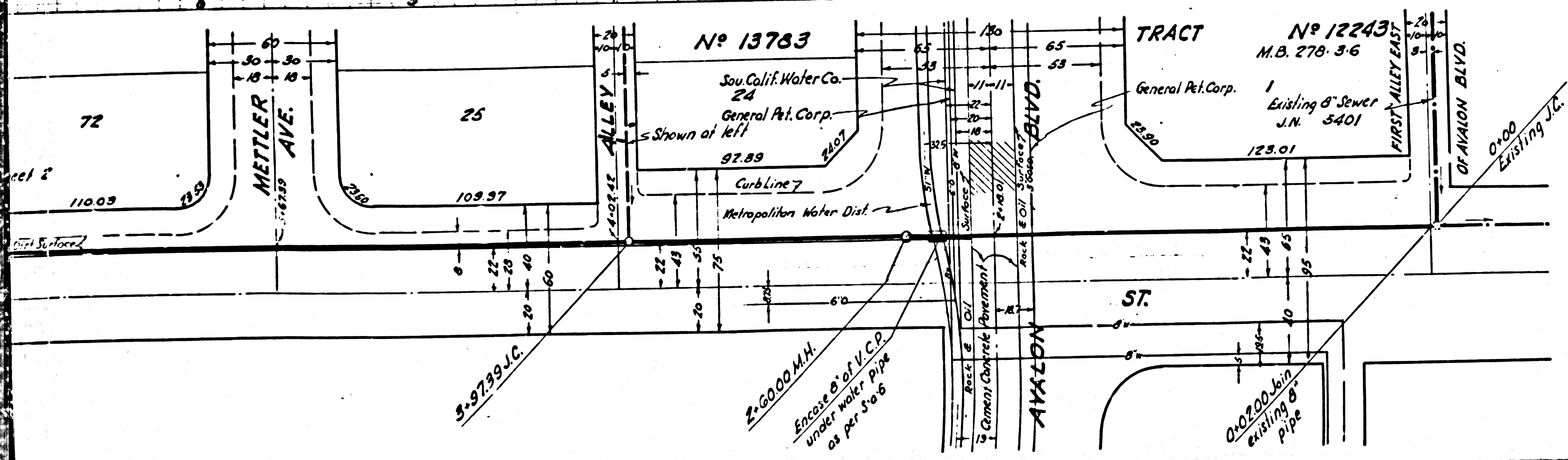
PRIVATE CONTRACT NO. 391
 WS 26

SHEET 1 OF 2 SHEETS

PREPARED IN THE OFFICES OF
JONES & GILBERT

SCALE: VERT. 1" = 4'
 HORIZ. 1" = 40'

JUNE 1946



Final C.K. T.C.P. 12/11/46

BY *Paul Jones*
 REG. C.E. NO. 2311

FOR LEGEND
 SEE PLAN NO. S-6-64

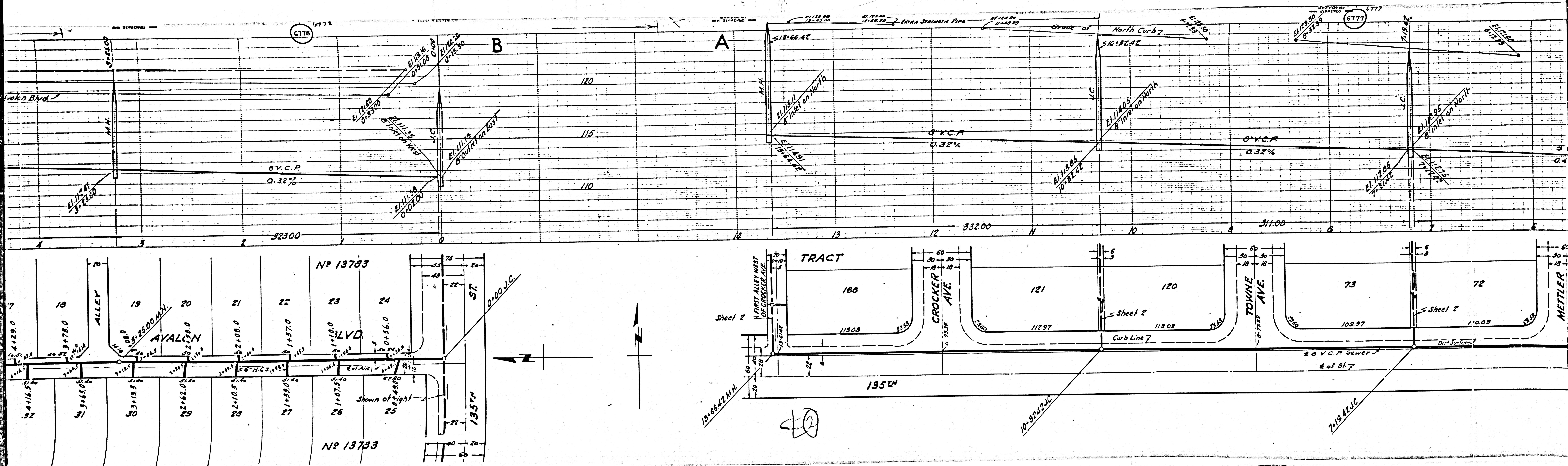
NOTE:
 GRADES TO WHICH THIS IMPROVEMENT IS TO BE CONSTRUCTED ARE SHOWN ON PLANS AND PROFILES. GRADE POINTS FOR TOP OF CURB, CENTER LINE OF STREET OR CENTER LINE OF ALLEY ARE SHOWN BY CIRCLES OR PROFILES. AT ALL POINTS BETWEEN DESIGNATED POINTS THE GRADE SHALL BE ESTABLISHED SO AS TO CONFORM TO A STRAIGHT LINE DRAWN BETWEEN SAID DESIGNATED POINTS.
 ELEVATIONS ARE IN FEET ABOVE U.S.C.S. DATUM OR MEAN SEA LEVEL.
 THIS DRAWING AND THE DATA HEREON ARE HEREBY MADE A PART OF THE SPECIFICATIONS.
 WORK SHALL BE CONSTRUCTED ACCORDING TO SPECIFICATIONS ON FILE IN THE OFFICE OF THE COUNTY ENGINEER AND SHALL BE PROSECUTED ONLY IN THE PRESENCE OF THE COUNTY ENGINEER.
 BEFORE WORK CAN BE STARTED THE CONTRACTOR MUST OBTAIN A PERMIT TO EXCAVATE IN COUNTY STREETS FROM THE L.A. COUNTY ROAD DEPT., 100 HALL OF RECORDS, AND MAKE A DEPOSIT WITH THE COUNTY ENGINEER, 200 UNION LEAGUE BUILDING, SUFFICIENT TO COVER THE COST OF CONSTRUCTION INSPECTION AND RECORD PLANS.

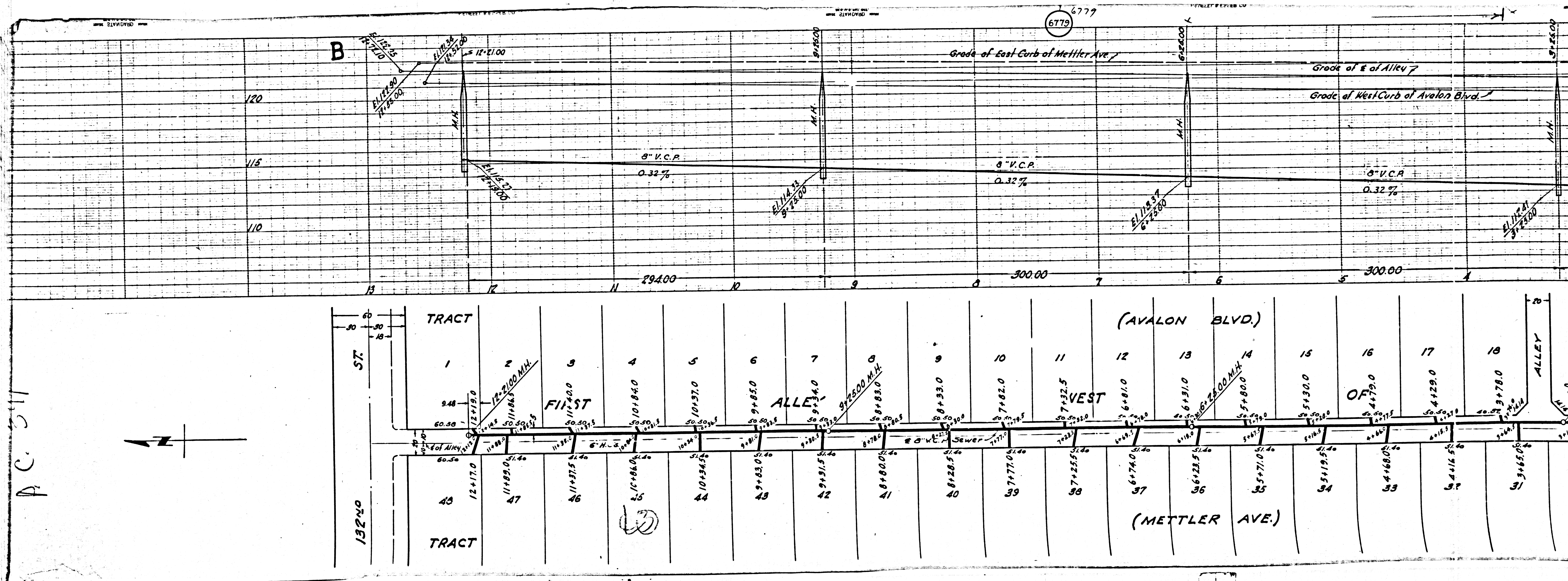
COUNTY OF LOS ANGELES, CALIFORNIA.

APPROVED *E. Edmund*
 CHIEF DEPUTY COUNTY ENGINEER

APPROVED *Paul Jones*
 CHIEF DIVISION OF COUNTY SANITATION DISTRICT NO. 1

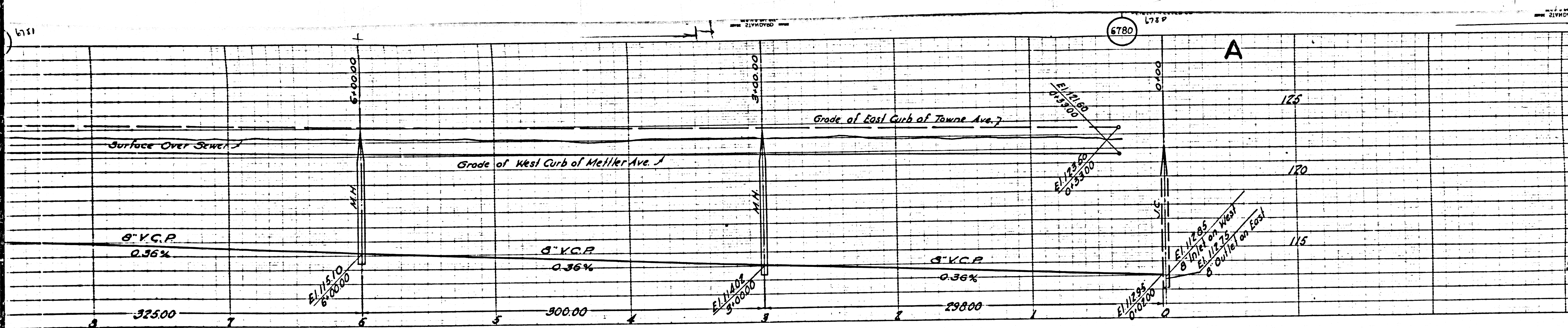
CHECKED BY *George W. J. J. J.* June 19 1946
 OFFICE OF COUNTY ENGINEER, RECORDED, 200 H.





AC 311

M.S.



2

PROFILE, ALIGNMENT AND GRADE OF
SANITARY SEWERS
 TO BE CONSTRUCTED IN

SANITARY SEWER RIGHTS OF WAY
 IN TRACT NO. 13763

FIRST ALLEY EAST OF SAN PEDRO ST
 BETWEEN 125TH ST AND 122ND ST

PRIVATE CONTRACT NO. 391
 WS 26

SHEET 2 OF 2 SHEETS JUNE 1946

PREPARED IN THE OFFICES OF
JONES & GILBERT

SCALE: VERT. 1"=4'
 HORIZ. 1"=40'

No 13763															
(METTLER AVE.)															
57	58	59	60	61	62	63	64	65	66	67	68	69	70	71	72
8+24.0	7+73.5	7+23.0	6+62.5	6+11.5	5+66.5	5+16.5	4+63.5	4+12.0	3+62.5	3+09.5	2+59.5	2+08.5	1+55.5	1+05.0	0+72.5
8+26.5	7+76.0	7+25.5	6+72.0	6+21.0	5+70.0	5+19.0	4+66.0	4+15.5	3+65.0	3+12.0	2+62.0	2+11.0	1+58.0	1+07.5	0+72.5
80	87	86	85	84	83	82	81	80	79	78	77	76	75	74	73
(TOWNE AVE.)															
No 13763															

FOR LEGEND
 SEE PLAN NO. 30-64

FOR CONSTRUCTION NOTES SEE SHEET 1

COUNTY OF LOS ANGELES, CALIFORNIA.

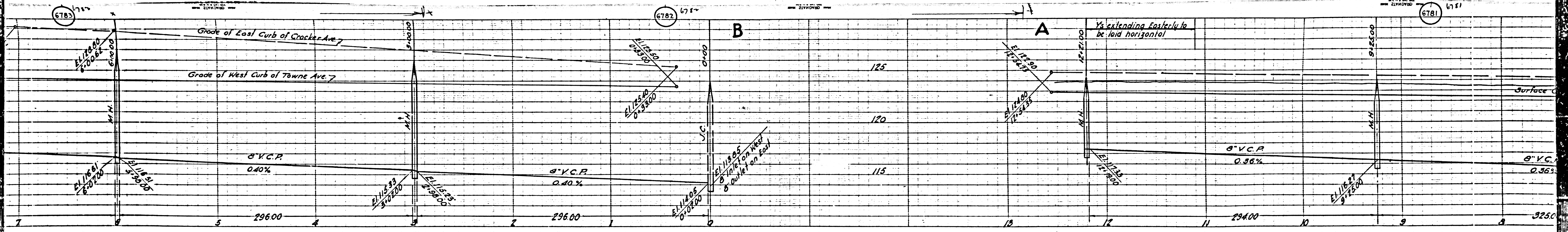
APPROVED: *Edmund*
 CHIEF DEPUTY COUNTY ENGINEER

APPROVED: *Carroll*
 CHIEF ENGINEER OF COUNTY
 SANITATION DISTRICT NO. 1

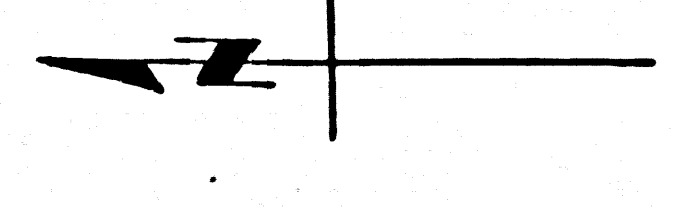
CHECKED BY: *W. J. Hill* - June 1946
 DISTRICT COUNTY ENGINEER

Final Ck. T.P. 12/11/46

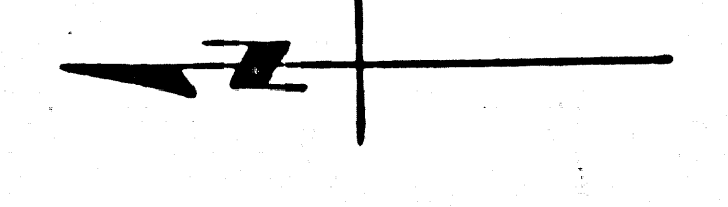
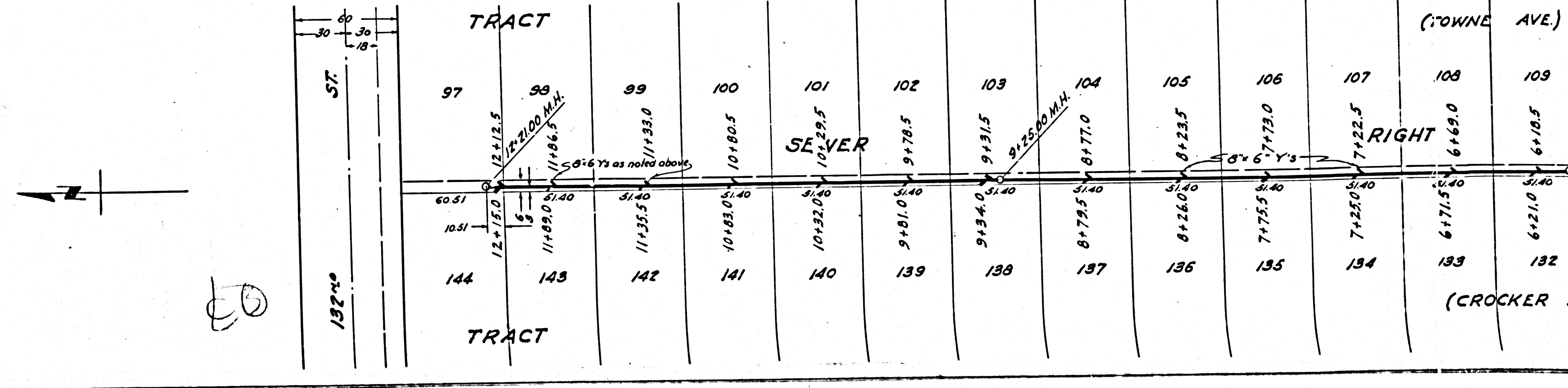
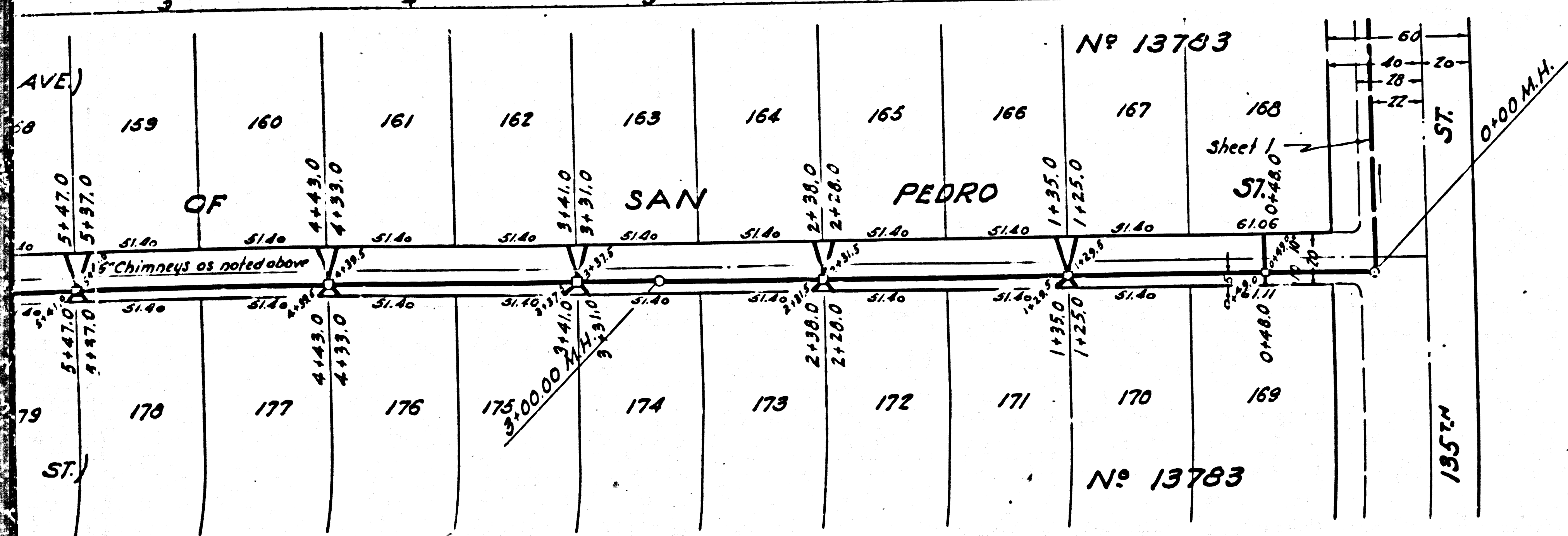
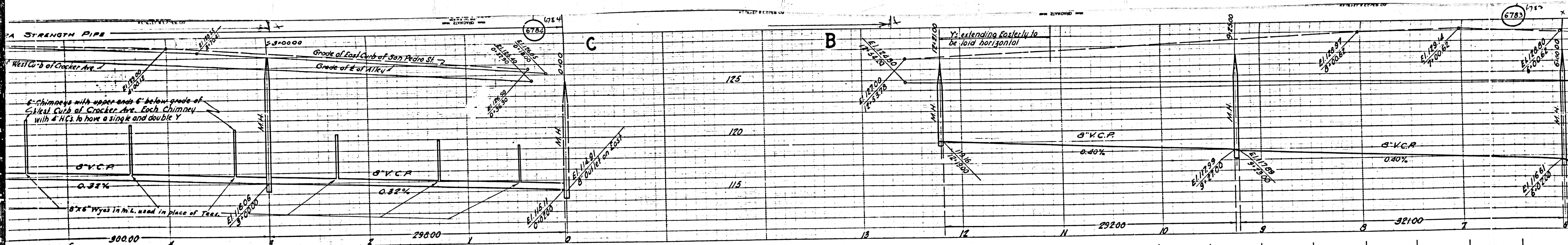
135



No 13783													No 13783		TRACT												
RIGHT													ST.		TRACT												
108	109	110	111	112	113	114	115	116	117	118	119	120	132	49	50	51	52	53	54	55	56	57	58				
6+69.0	6+10.5	6+100 M.H.	5+170	4+640	4+135	3+600	3+09.5	3+000 M.H.	2+570	2+06.5	1+560	1+05.5	0+485	894	12+130	11+310	10+80.5	10+300	9+795	9+31.5	8+745	8+240	7+735				
5+40	5+40	5+40	5+40	5+40	5+40	5+40	5+40	5+40	5+40	5+40	5+40	5+40	5+40	60.50	5+40	5+40	5+40	5+40	5+40	5+40	5+40	5+40	5+40				
6+71.5	6+21.0	5+70.5	5+19.5	4+66.5	4+16.0	3+62.5	3+12.0	2+59.5	2+09.0	1+58.5	1+08.0	0+51.0	6+15	12+15.5	11+07.0	11+33.5	10+83.0	10+32.5	9+82.0	9+34.0	8+77.0	8+26.5	7+76.0				
138	132	131	130	129	128	127	126	125	124	123	122	121	135	96	95	94	93	92	91	90	89	88	87				
(CROCKER AVE.)													TRACT														

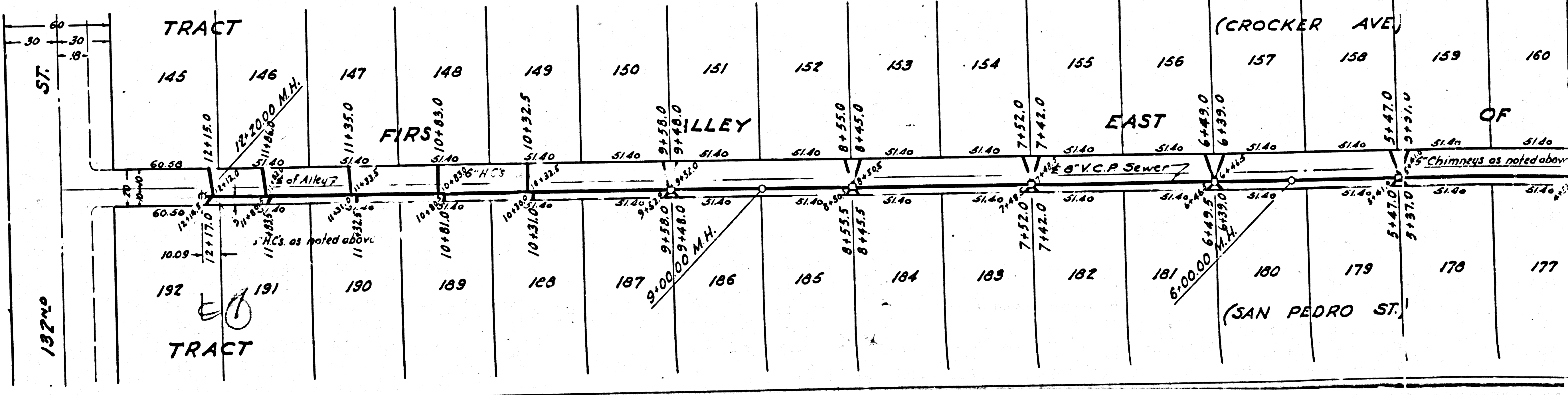
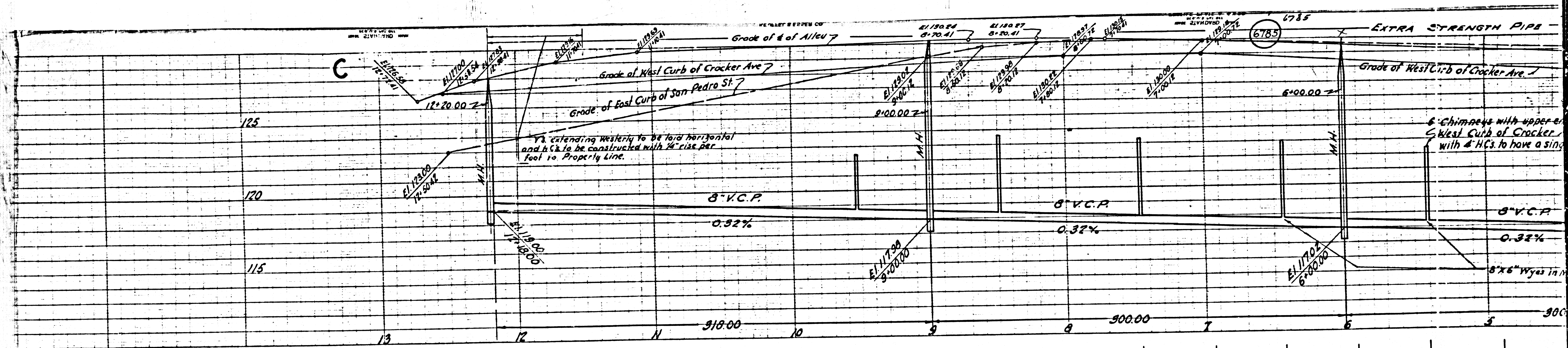


40



M3

M6



112.34

