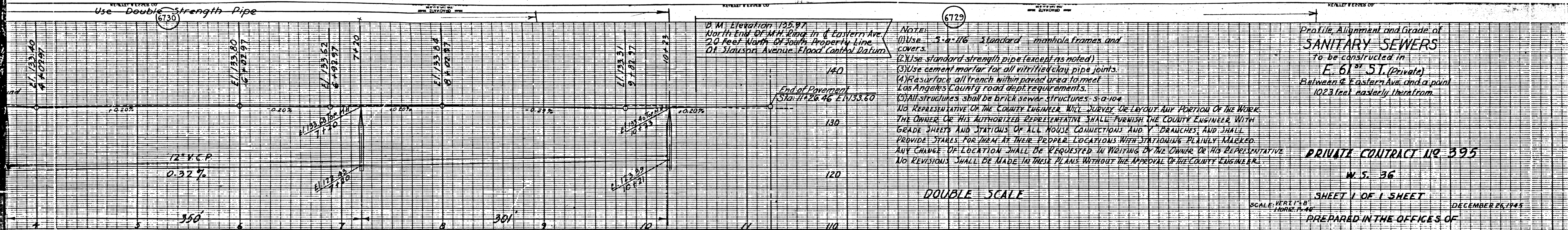


Use Double Strength Pipe

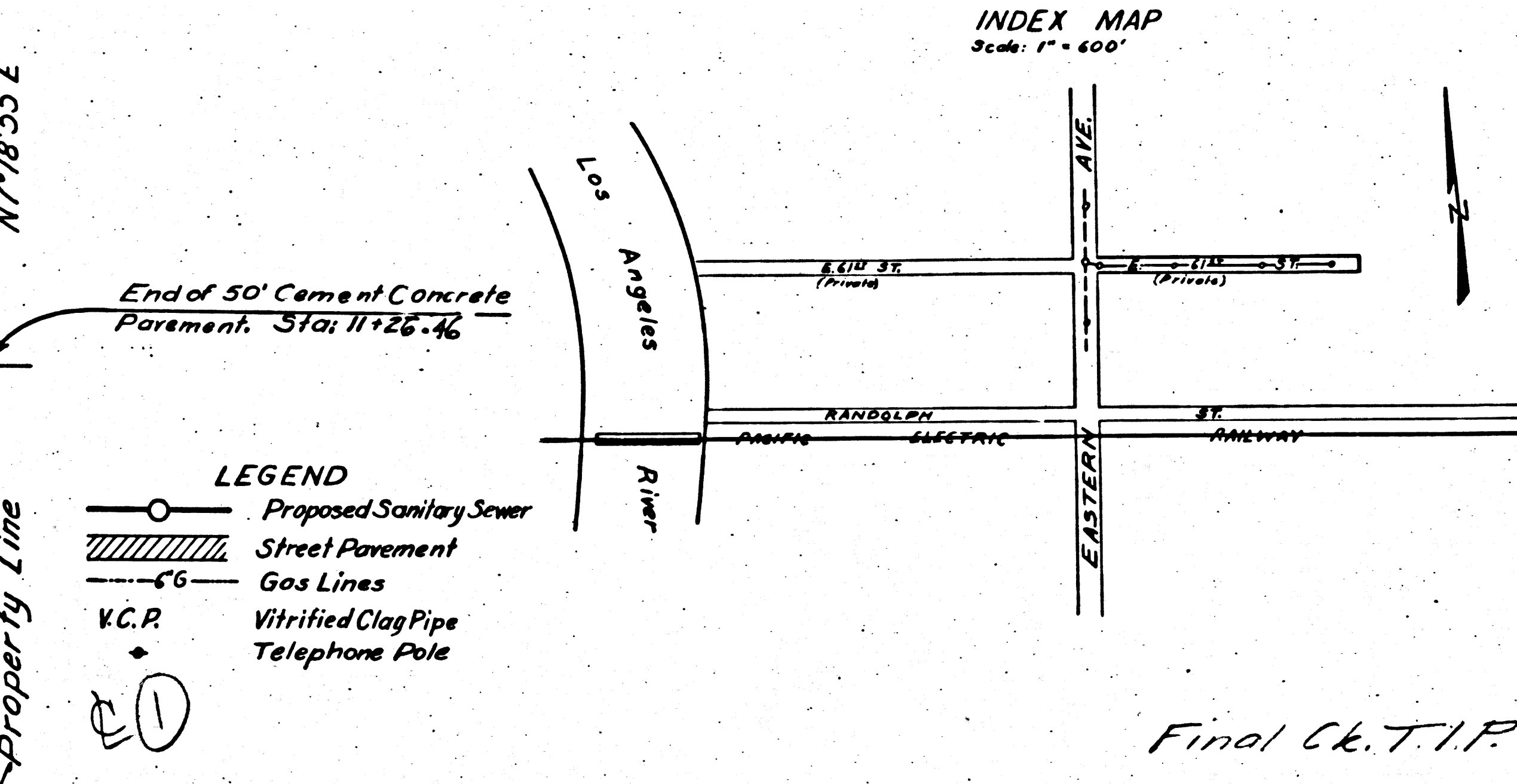
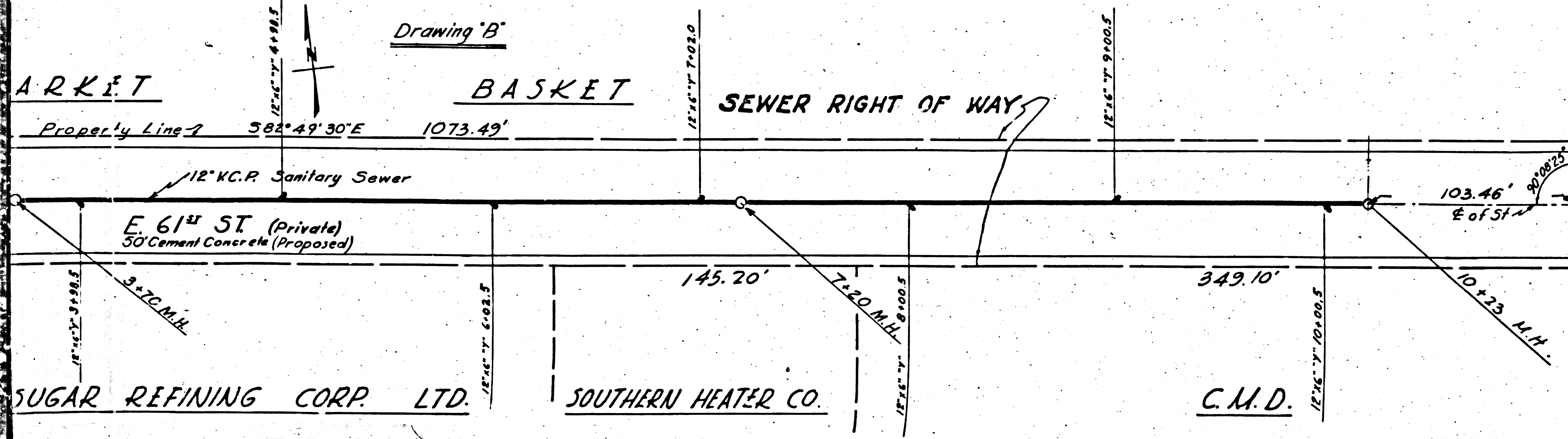


6729

NOTE:
 (1) Use 2'-0" I.D. standard manhole frames and covers.
 (2) Use standard strength pipe (except as noted).
 (3) Use cement mortar for all vitrified clay pipe joints.
 (4) Resurface all trench within paved area to meet Los Angeles County road dept. requirements.
 (5) All structures shall be brick sewer structures S-A-104.
 NO REPRESENTATIVE OF THE COUNTY ENGINEER WILL SURVEY OR LAYOUT ANY PORTION OF THE WORK. THE OWNER OR HIS AUTHORIZED REPRESENTATIVE SHALL FURNISH THE COUNTY ENGINEER WITH GRADE SHEETS AND STATIONS OF ALL HOUSE CONNECTIONS AND Y-DRANCHES AND SHALL PROVIDE STAKES FOR THEM AT THEIR PROPER LOCATIONS WITH STATIONING PLAINLY MARKED. ANY CHANGE OF LOCATION SHALL BE REQUESTED IN WRITING BY THE OWNER OR HIS REPRESENTATIVE. NO REVISIONS SHALL BE MADE IN THESE PLANS WITHOUT THE APPROVAL OF THE COUNTY ENGINEER.

Profile, Alignment and Grade of
SANITARY SEWERS
 to be constructed in
E. 61st ST. (Private)
 Between Eastern Ave. and a point
 1023 feet easterly therefrom.

PRIVATE CONTRACT NO 395
 N.S. 36
 SHEET 1 OF 1 SHEET
 SCALE: VERT. 1" = 4'
 HORIZ. 1" = 40'
 DECEMBER 26, 1945
 PREPARED IN THE OFFICES OF
 CENTRAL MANUFACTURING DISTRICT INC.



BY: Kenneth E. Gill REG. C.E. NO. 1022

NOTE:
 GRADES TO WHICH THIS IMPROVEMENT IS TO BE CONSTRUCTED ARE SHOWN ON PLANS AND PROFILE. GRADE POINTS FOR CENTER LINE OF STREET ARE SHOWN BY CIRCLES ON PROFILE. AT ALL POINTS BETWEEN DESIGNATED POINTS THE GRADE SHALL BE ESTABLISHED SO AS TO CONFORM TO A STRAIGHT LINE DRAWN BETWEEN SAID DESIGNATED POINTS. ELEVATIONS ARE IN FEET ABOVE U.S.S. DATUM.
 THIS DRAWING AND THE DATA HEREON ARE HEREBY MADE A PART OF THE SPECIFICATIONS. WORK SHALL BE CONSTRUCTED ACCORDING TO SPECIFICATIONS ON FILE IN THE OFFICE OF THE COUNTY ENGINEER AND SHALL BE PROSECUTED ONLY IN THE PRESENCE OF THE COUNTY ENGINEER. BEFORE WORK CAN BE STARTED, THE CONTRACTOR MUST OBTAIN A PERMIT TO EXCAVATE IN COUNTY STREETS FROM THE COUNTY ROAD DEPT., USE HALL OF RECORDS, AND MAKE A DEPOSIT WITH THE COUNTY ENGINEER, 700 UNION LEAGUE BUILDING, SUFFICIENT TO COVER THE COST OF CONSTRUCTION INSPECTION AND RECORD PLANS.

COUNTY OF LOS ANGELES, CALIFORNIA.
 APPROVED: Edmond CHIEF DISTRICT COUNTY ENGINEER
 APPROVED: W. J. ... CHIEF ENGINEER OF COUNTY SANITATION DISTRICT NO. 2
 CHECKED BY: W. J. ... OFFICE OF COUNTY ENGINEER, REG. C.E. NO. 1022

Final Ck. T.I.P. 10/30/46

RECEIVED
AUG 5 1946
SANITATION DISTRICT NO. 2

