

1. Use Standard Manhole Frames and Covers, S-a-116
2. Use Standard Strength Pipe
3. Use Cement Mortar for all Vitrified Clay Pipe Joints
4. Encase four feet of Sewer at points of interference with Poles as per S-a-6
5. All Structures shall be Brick Structures, S-a-104
6. Construct House Connections with Invert of Property Line 8 feet below Curb Grade, except as noted.

NOTE:  
 No representative of the County Engineer will survey or lay out any portion of the work. The owner or his authorized representative shall furnish the County Engineer with Grade Sheets and Stations for all House Connections and V. Manholes, and shall provide stakes for lines at their proper locations with stationing plainly marked. Any change of location shall be reported in writing by the owner or his representative.  
 No revisions shall be made in these Plans without approval of the County Engineer.

**PROFILE, ALIGNMENT AND GRADE OF  
 SANITARY SEWERS  
 TO BE CONSTRUCTED IN  
 THOREAU STREET  
 BETWEEN WILTON PL. & ARLINGTON AVE.  
 VAN WICK STREET  
 BETWEEN THE EASTERLY LINE OF TRACT NO. 13794 & ARLINGTON AVE.  
 CULLIVAN STREET  
 109<sup>TH</sup> PLACE  
 BETWEEN WILTON PL. & ARLINGTON AVE.  
 PRIVATE CONTRACT NO. 396  
 W.S. 26  
 SHEET 1 OF 2 SHEETS  
 Scale: Vert. 1" = 4'  
 Horiz. 1" = 40'  
 July, 1946**

PREPARED IN THE OFFICES OF  
**SEASGARD ENGINEERING CO.**  
 BY *Mark A. Blom*  
 Reg. C.E. No. 2059

FOR LEGEND  
 See Plan No. S-4-94

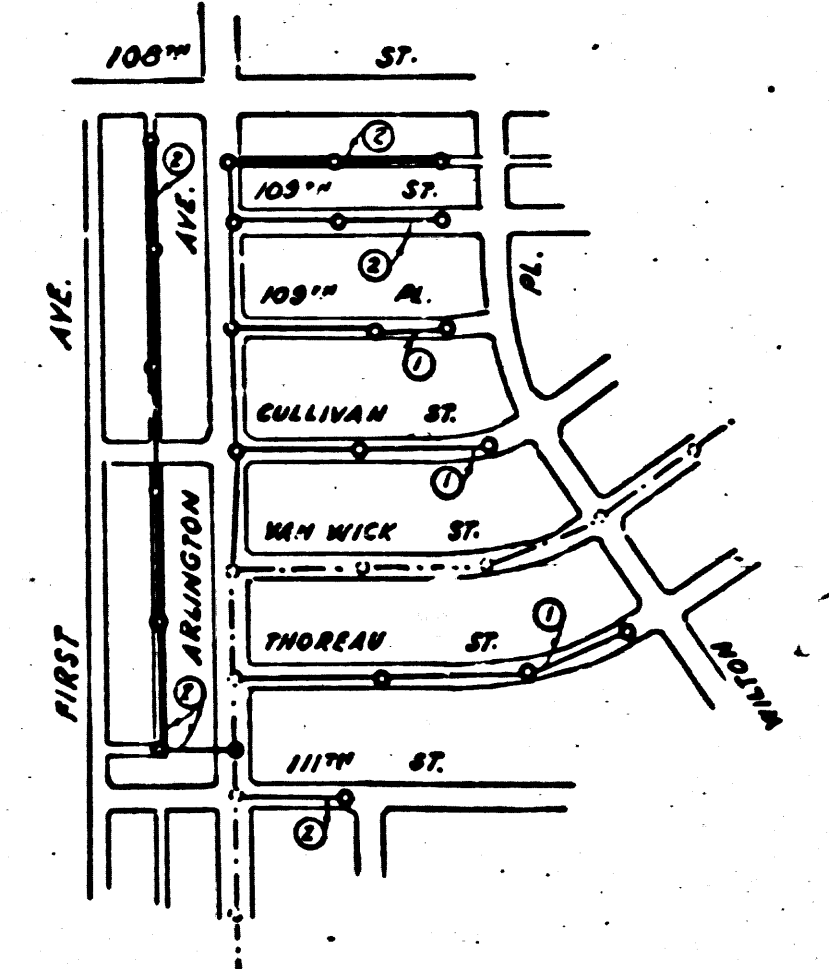
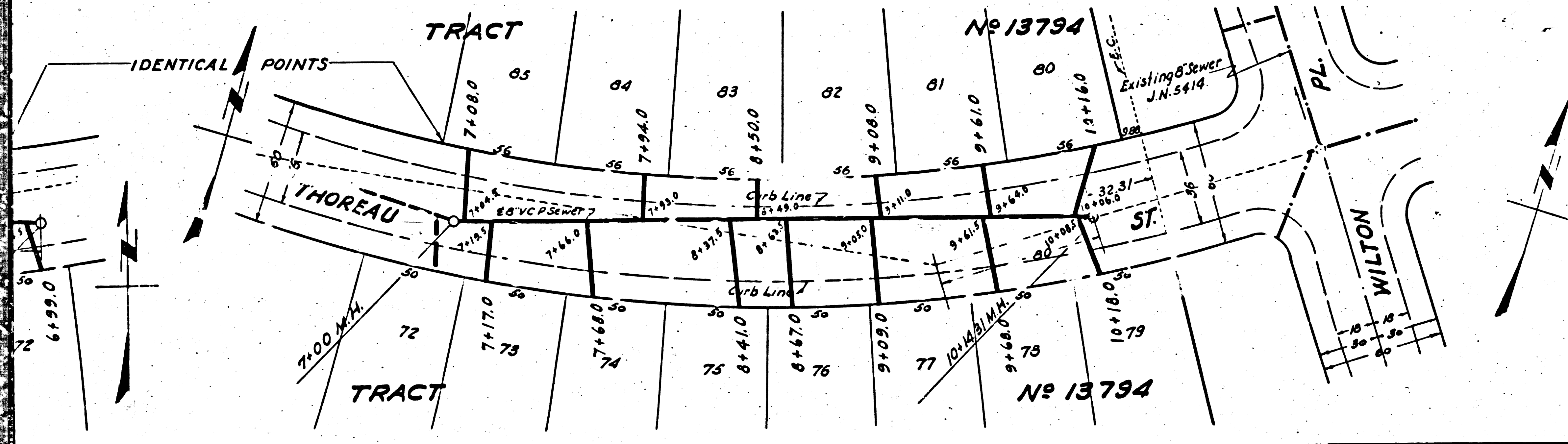
NOTE:  
 Grades to which this improvement is to be constructed are shown on Plans and Profiles. Grade points for top of curb, center line of streets or center line of alley are shown by circles on Profiles. At all points between designated points the grade shall be established so as to conform to a straight line drawn between said designated points.  
 Elevations are 2 feet above U.S.C.S. Datum or Mean Sea Level.  
 This drawing and the data hereon are hereby made a part of the specifications. Work shall be constructed according to specifications on file in the office of the County Engineer and shall be prosecuted only in the presence of the County Engineer. Before work can be started the Contractor must obtain a permit to excavate in County streets from the L.A. County Road Dept. 1104 Hall of Records, and make a deposit with the County Engineer, 700 Fashion League Building, sufficient to cover the cost of Construction Inspection and Record Plans.

COUNTY OF LOS ANGELES, CALIFORNIA

APPROVED *[Signature]*  
 Chief Deputy County Engineer

APPROVED *[Signature]*  
 Chief Engineer of County Sanitation District No. 6

CHECKED *[Signature]* 1946  
 Office of County Engineer, Reg. C.E. No. 6350

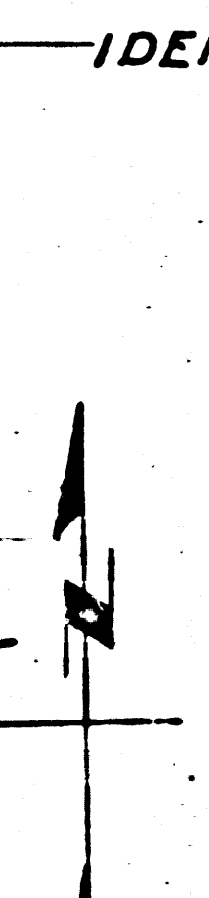
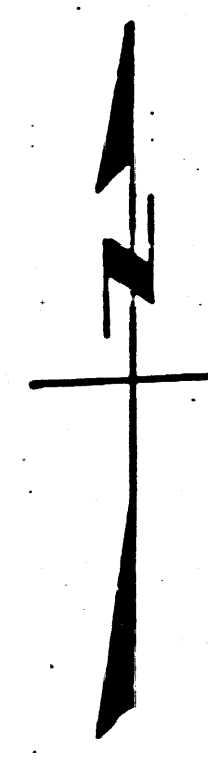
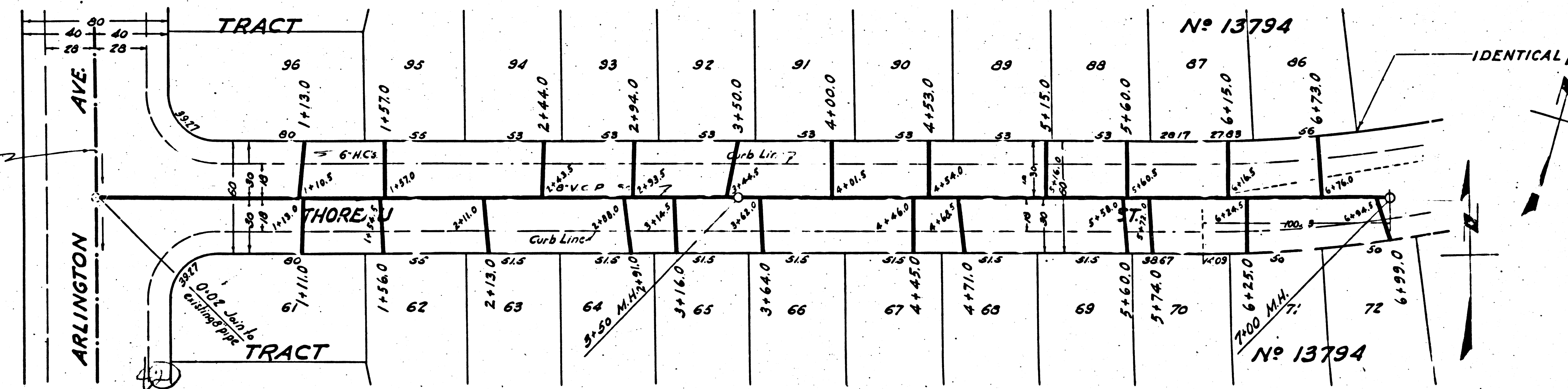
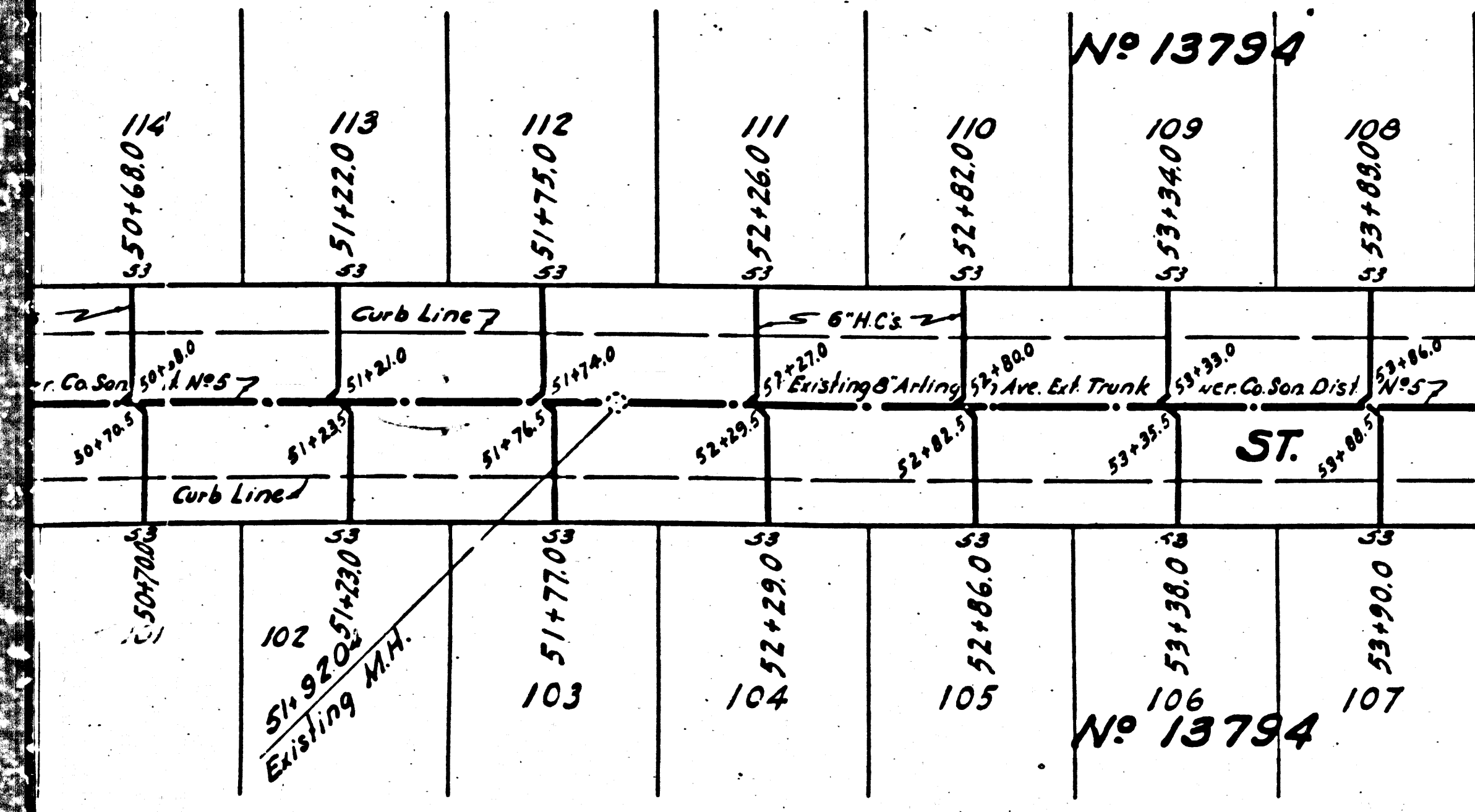
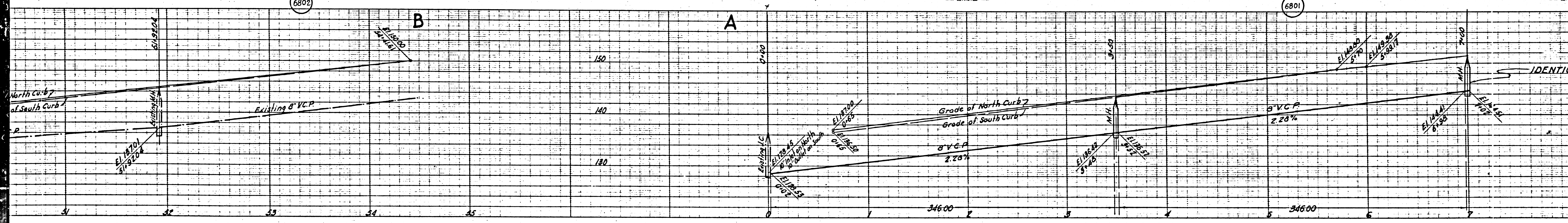


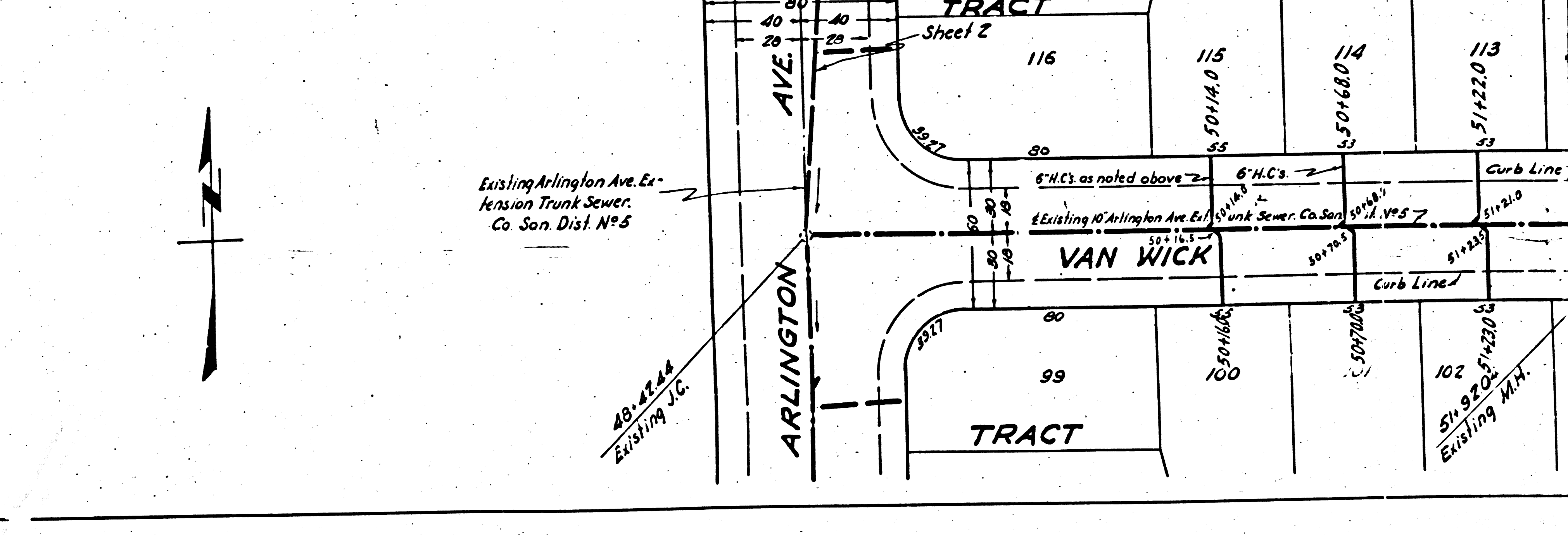
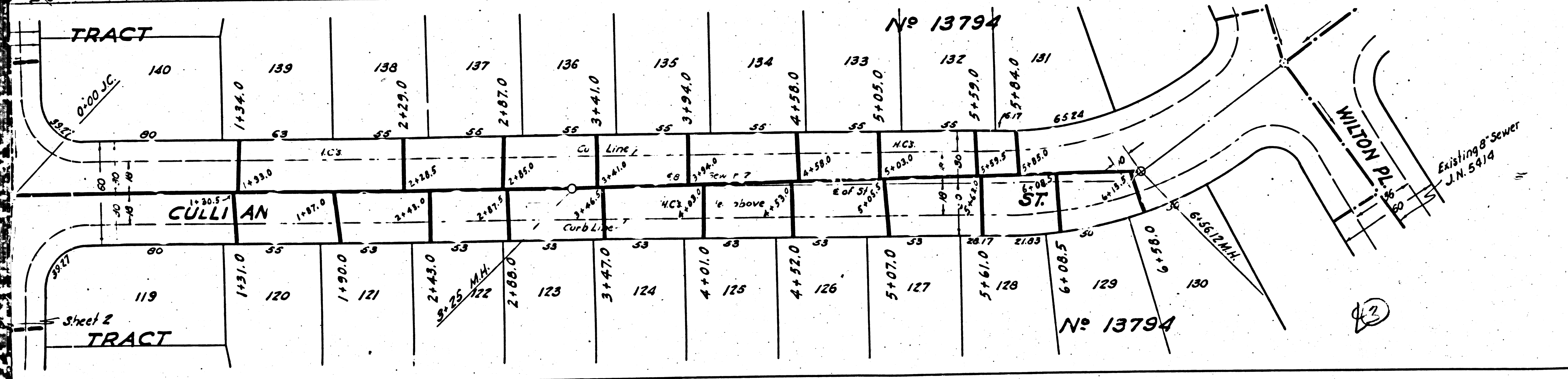
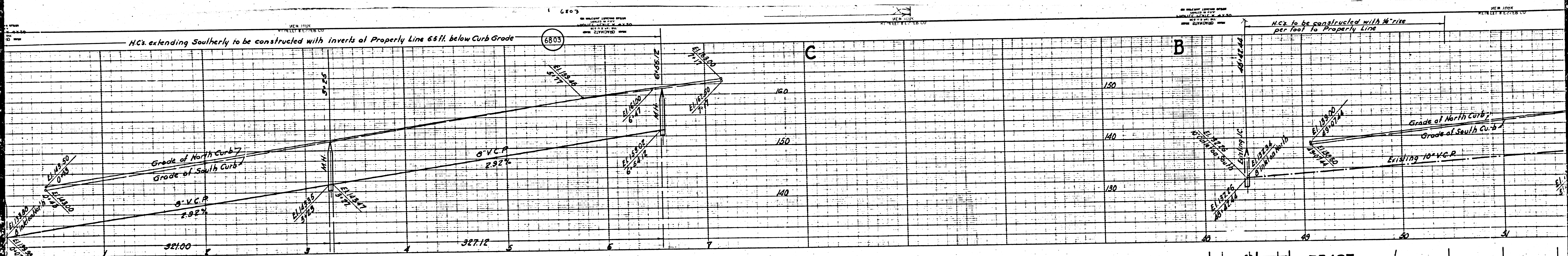
*Final CK T.P. 1/24/47*

Trim Line

6802

6801





NEW YORK  
 6803  
 H.C.'s extending Southerly to be constructed with Inverts at Property Line 6.5 ft. below Curb Grade  
 H.C.'s to be constructed with 1/4" rise per foot to Property Line

TRACT  
 CULLINAN  
 WILSON PL.  
 ARLINGTON AVE.  
 VAN WICK  
 TRACT

Trim Line 7

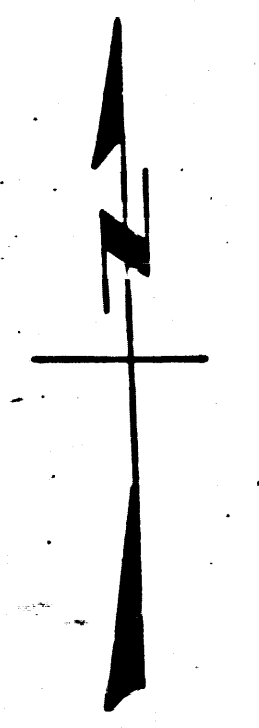
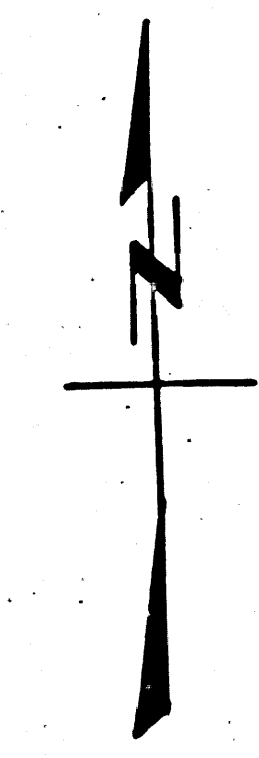
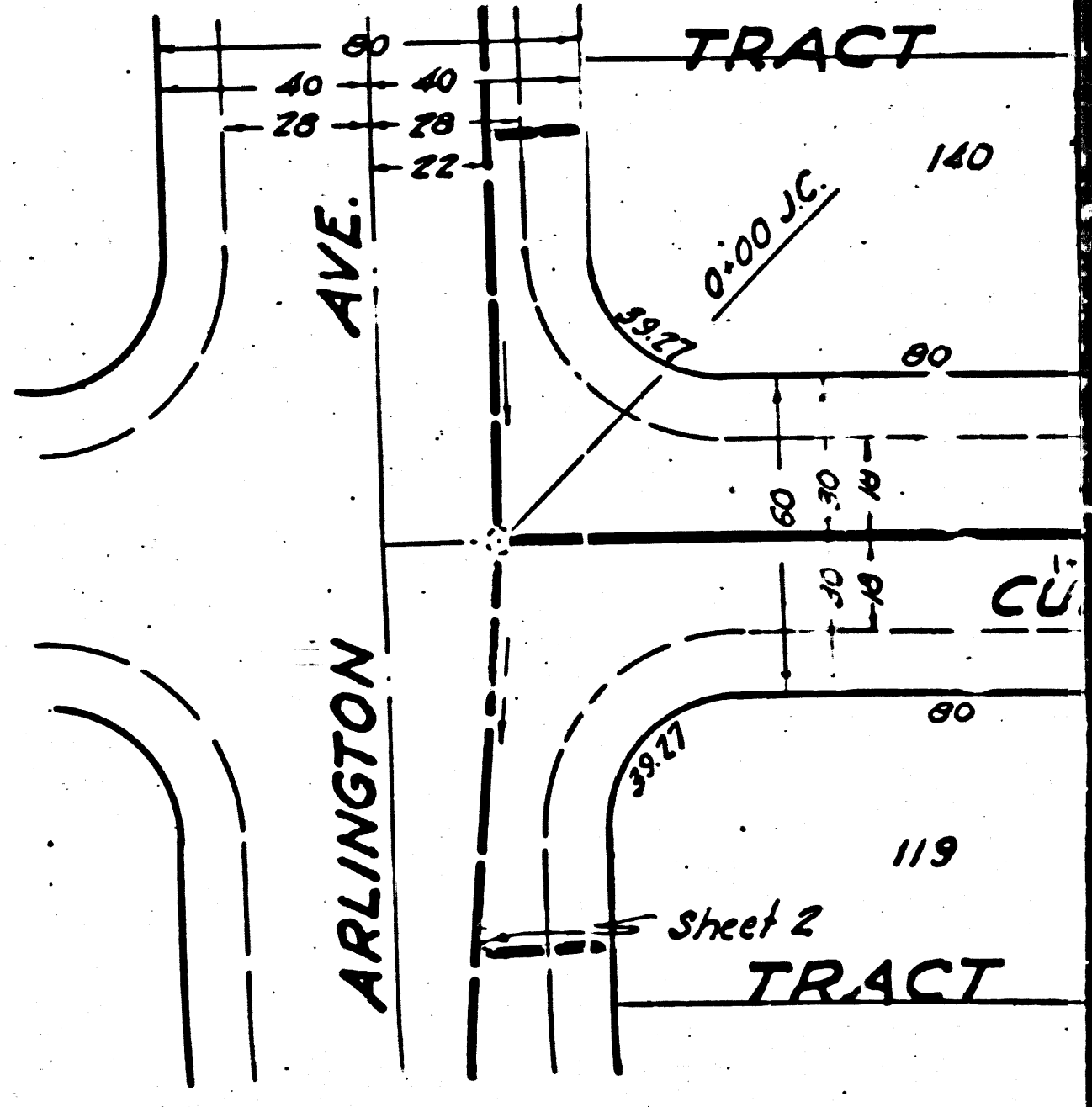
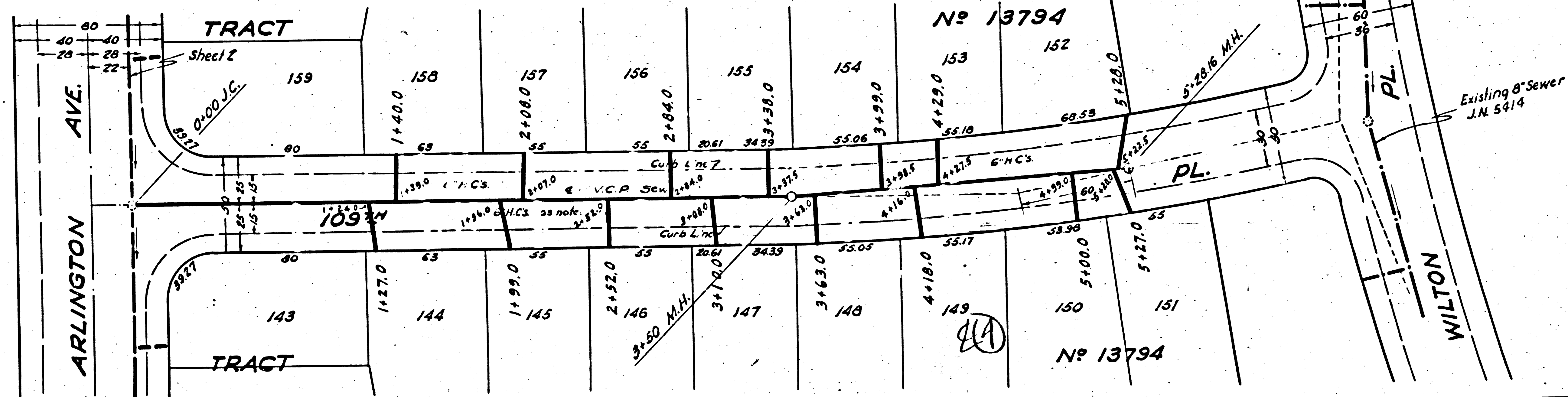
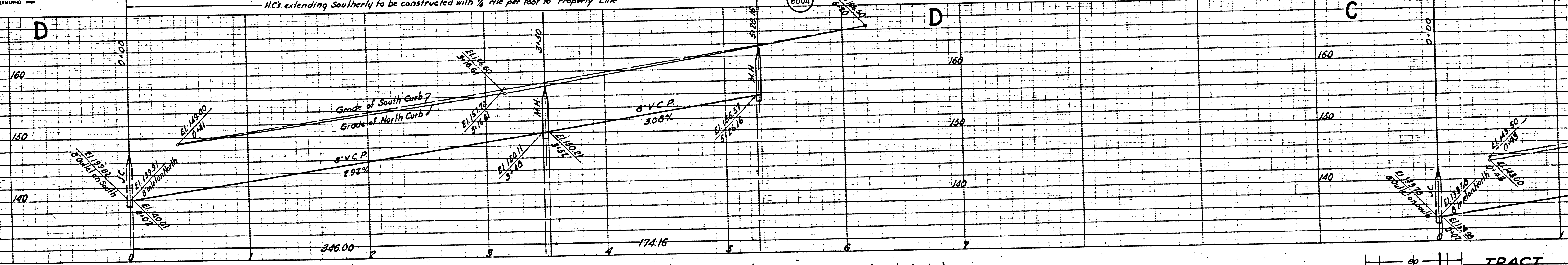
BY PLANET, LONDON STATION  
SCALE 1" = 20'-0"  
DATE 11/15/1914  
BY J. N. 5414

BY PLANET, LONDON STATION  
SCALE 1" = 20'-0"  
DATE 11/15/1914  
BY J. N. 5414

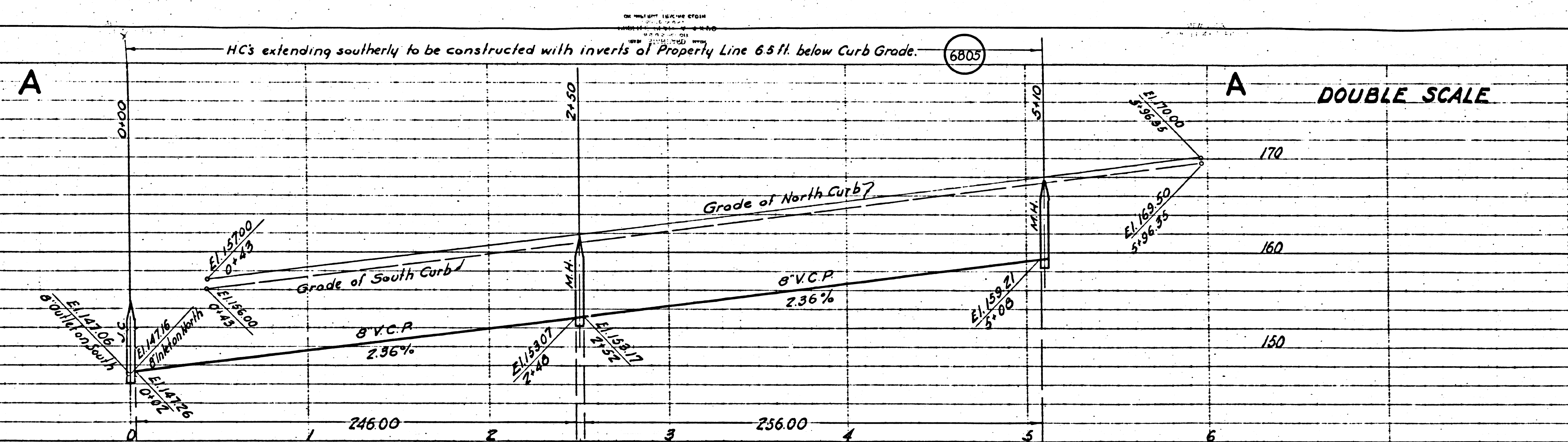
BY PLANET, LONDON STATION  
SCALE 1" = 20'-0"  
DATE 11/15/1914  
BY J. N. 5414

H.C.'s extending Southerly to be constructed with 1/4" rise per foot to Property Line

6804



Trim Line

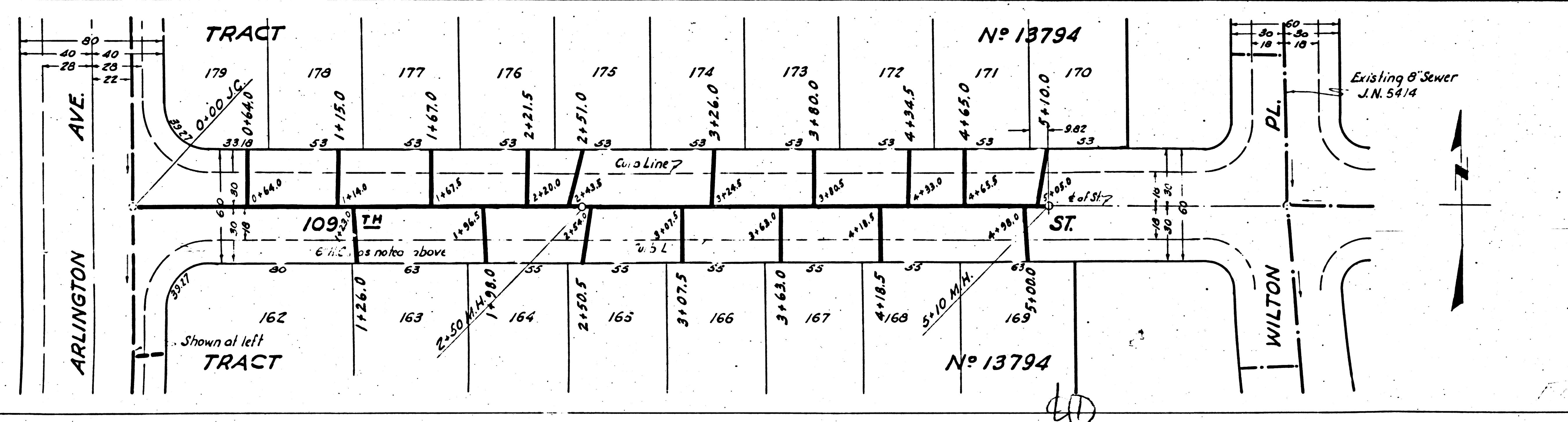


Trim Line 7

**DOUBLE SCALE**

(2)

**PROFILE, ALIGNMENT AND GRADE OF  
 SANITARY SEWERS  
 TO BE CONSTRUCTED IN  
 109<sup>TH</sup> STREET  
 FIRST ALLEY SOUTH OF 108<sup>TH</sup> STREET  
 BETWEEN WILTON PL. & ARLINGTON AVE.  
 ARLINGTON AVENUE  
 BETWEEN 111<sup>TH</sup> ST. & FIRST ALLEY NORTH OF 103<sup>TH</sup> ST.  
 FIRST ALLEY WEST OF ARLINGTON AVENUE  
 BETWEEN FIRST ALLEY SOUTH OF CULLIVAN ST. & 108<sup>TH</sup> ST.  
 111<sup>TH</sup> STREET  
 BETWEEN ARLINGTON AVE. & A POINT 300 FT. EASTERLY  
 PRIVATE CONTRACT NO. 336  
 W.S. 26  
 SHEET 2 OF 2 SHEETS  
 Scale: Vert. 1" = 40'      Horiz. 1" = 40'      July 1946  
 PREPARED IN THE OFFICES OF  
 SEABOARD ENGINEERING CO.**



Trim Line 7

Existing 6" Sewer  
 J.N. 5414

FOR LEGEND  
 See Plan No. S-8-64

FOR CONSTRUCTION NOTES SEE SHEET 1

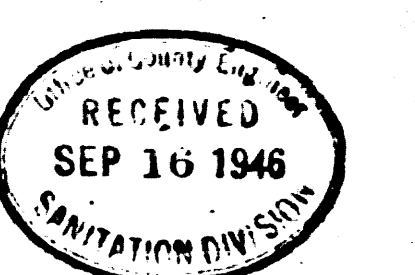
COUNTY OF LOS ANGELES, CALIFORNIA

APPROVED: *[Signature]*  
 Chief Deputy County Engineer

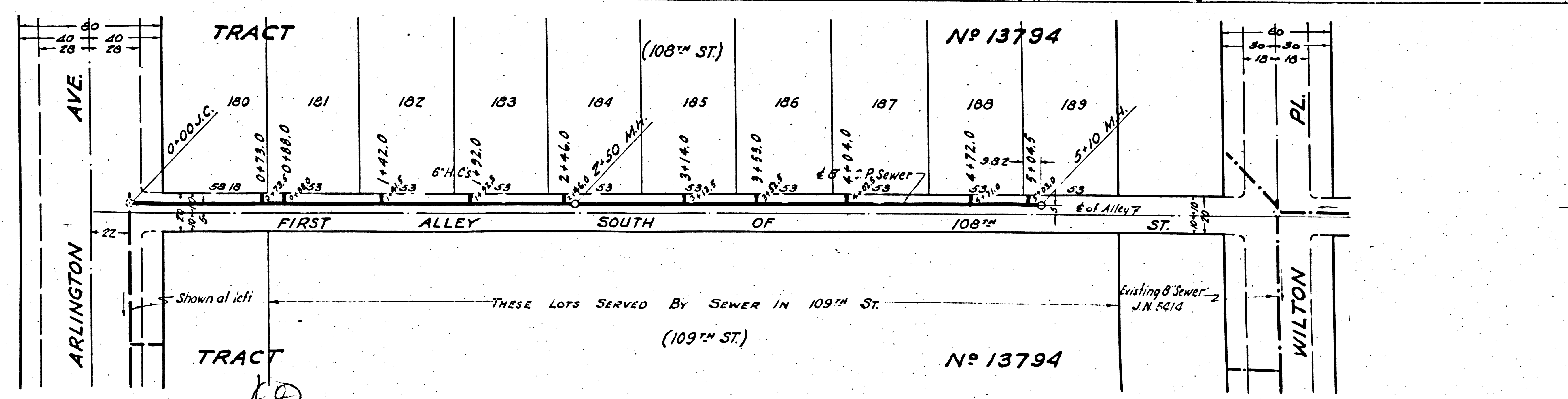
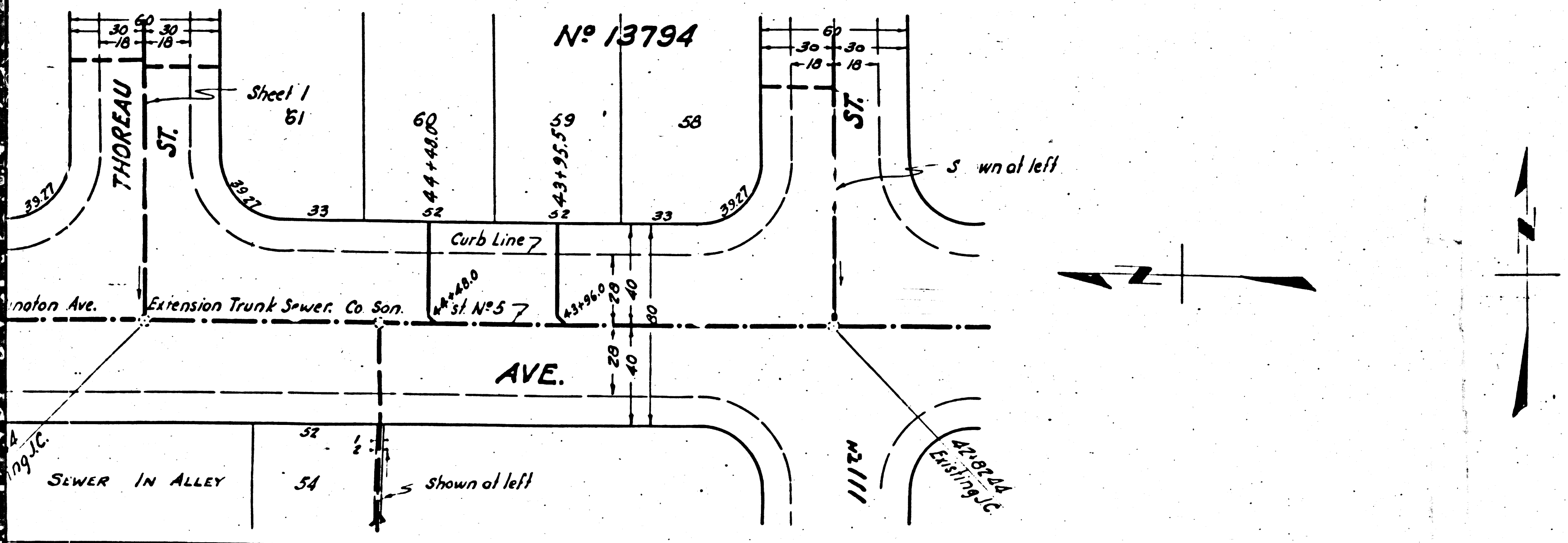
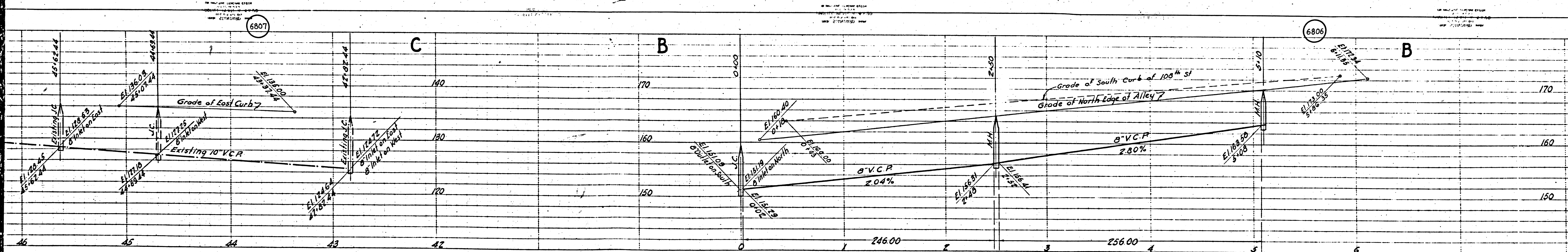
APPROVED: *[Signature]*  
 Chief Engineer of County  
 Sanitation District No. 5

CHECKED: *[Signature]* 1946  
 Office of County Engineer, Reg. C.E. No. 6330

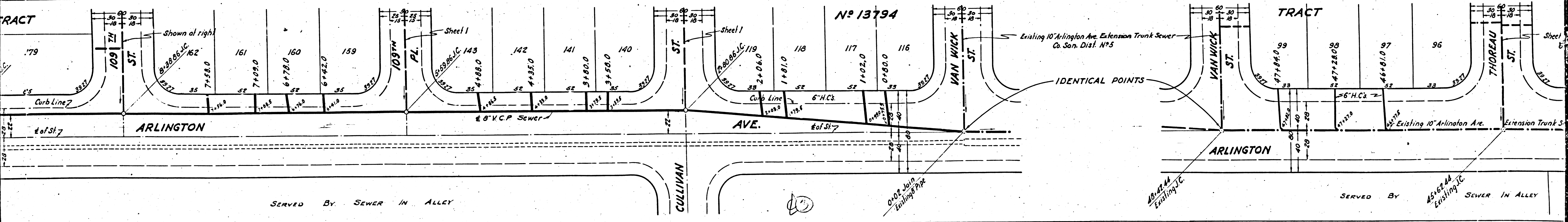
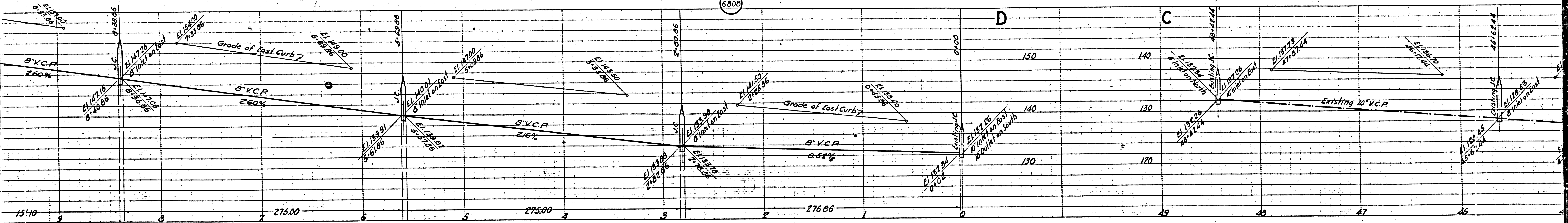
Trim Line 7



BC 330

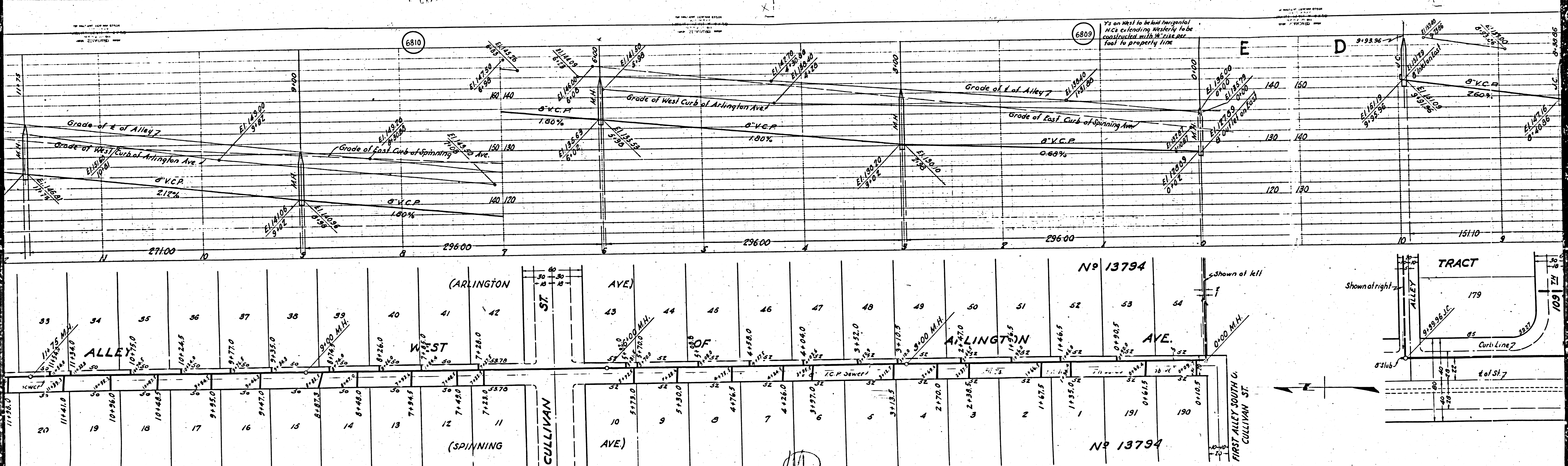


6808



SERVED BY SEWER IN ALLEY

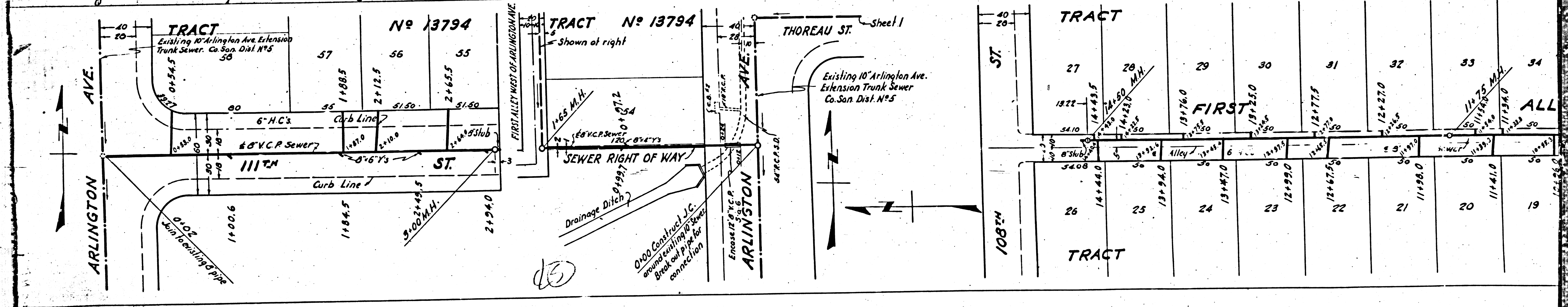
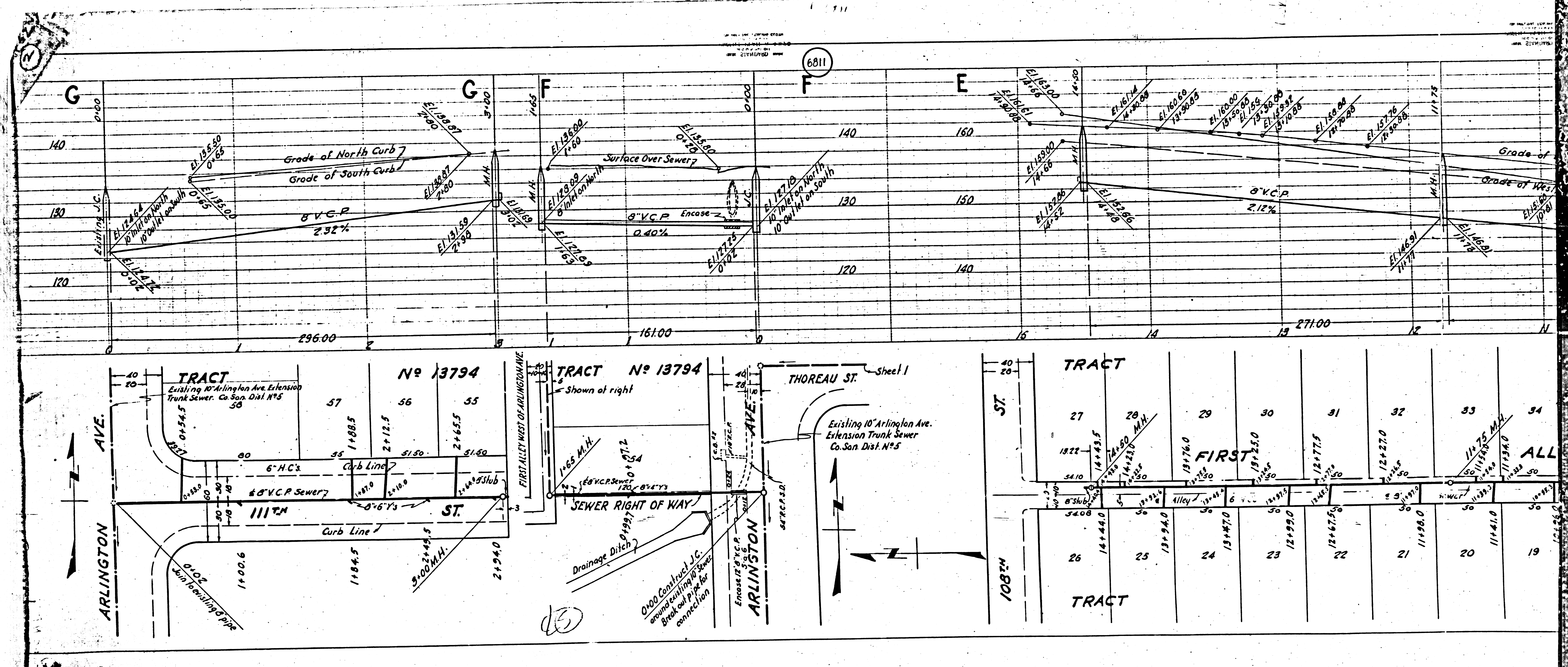
SERVED BY 45" 62" AA Existing J.C. SEWER IN ALLEY



Property listing table with columns for lot number, address, and area.

| Lot | Address | Area |
|-----|---------|------|
| 20  | 11441.0 |      |
| 19  | 10426.0 |      |
| 18  | 10440.5 |      |
| 17  | 9495.0  |      |
| 16  | 9477.0  |      |
| 15  | 8477.0  |      |
| 14  | 8448.0  |      |
| 13  | 7434.5  |      |
| 12  | 7145.0  |      |
| 11  | 7128.0  |      |
| 10  | 5478.0  |      |
| 9   | 5430.0  |      |
| 8   | 4476.5  |      |
| 7   | 4426.0  |      |
| 6   | 3477.0  |      |
| 5   | 3423.5  |      |
| 4   | 2470.0  |      |
| 3   | 2430.5  |      |
| 2   | 1477.5  |      |
| 1   | 1435.0  |      |
| 191 | 0461.5  |      |
| 190 | 0410.5  |      |





6811

Sheet 1

(3)

110