

6788

BENCH MARK: U.S.G.S. DISK NO. D-167  
 IN THE S.E. CORNER OF INTERSECTION OF  
 ALAMEDA ST. AND CARSON ST. IN D.M.  
 WATER IN CENTER OF 12' COLUMN SOUTH  
 OF CENTER DOOR, WEST SIDE AND 2' ABOVE  
 WATER TABLE. ELEVATION 31.870.

NOTES: (CONTINUED)

BEFORE WORK CAN BE STARTED, THE CONTRACTOR MUST OBTAIN A PERMIT TO  
 EXCAVATE IN COUNTY STREETS FROM THE L.A. COUNTY ROAD DEPARTMENT, 104 HALL OF  
 RECORDS AND MAKE A DEPOSIT WITH THE COUNTY ENGINEER, THE UNION LEAGUE BUILDING,  
 SUFFICIENT TO COVER THE COST OF CONSTRUCTION, INSPECTION AND RECORD PLANS.  
 IF WORK IS TO BE DONE IN A STATE HIGHWAY, A PERMIT MUST BE OBTAINED FROM  
 THE STATE OF CALIFORNIA DIVISION OF HIGHWAYS, 608 STATE BUILDING AFTER MAKING  
 THE DEPOSIT WITH THE COUNTY ENGINEER.

USE STANDARD STRENGTH PIPE, EXCEPT AS NOTED.

ENCASE 4 FEET OF SEWER AT POINTS OF INTERFERENCE WITH POLES AS PER PLAN S-2-6.

USE CEMENT MORTAR FOR ALL PIPE JOINTS.

ALL STRUCTURES SHALL BE BRICK SEWER STRUCTURES NO. 5-a-104.

USE STANDARD MANHOLE FRAME AND COVERS NO. 5-a-117

CONSTRUCT HOUSE CONNECTIONS WITH INVERT AT PROPERTY LINE 3 FEET  
 BELOW CURB GRADE, EXCEPT AS NOTED.

NO REPRESENTATIVE OF THE COUNTY ENGINEER WILL SURVEY OR LAY OUT  
 ANY PORTION OF THE WORK.

THE OWNER OR HIS AUTHORIZED REPRESENTATIVE SHALL FURNISH THE  
 COUNTY ENGINEER WITH GRADE SHEETS AND STATIONS OF ALL HOUSE CONNECTIONS  
 AND "Y" BRANCHES, AND SHALL PROVIDE STAKES FOR THEM AT THEIR PROPER  
 LOCATIONS WITH STATIONING PLAINLY MARKED. ANY CHANGE OF LOCATION SHALL BE  
 REQUESTED IN WRITING BY THE OWNER OR HIS REPRESENTATIVE.

NO REVISIONS SHALL BE MADE IN THESE PLANS WITHOUT APPROVAL OF THE  
 COUNTY ENGINEER.

PROFILE, ALIGNMENT AND GRADE OF  
**SANITARY SEWERS**  
 TO BE CONSTRUCTED IN  
**SALMON AVENUE**  
 BETWEEN 220<sup>TH</sup> PLACE AND 223<sup>RD</sup> STREET  
 AND  
 220<sup>TH</sup> PLACE  
 BETWEEN MCHELEN AVENUE AND SALMON AVENUE

PRIVATE CONTRACT NO. 398  
 W.S. 30  
 SHEET 1 OF 4 SHEETS

SCALES VERT. 1"=4'  
 HORIZ. 1"=40'

JUNE 23, 1946

PREPARED IN THE OFFICES OF  
 E.F. KOENIG ENGINEER

BY E.F. Koenig  
 Reg. C.E. No. 3622

FOR LEGEND  
 SEE PLAN NO. S.A. 6

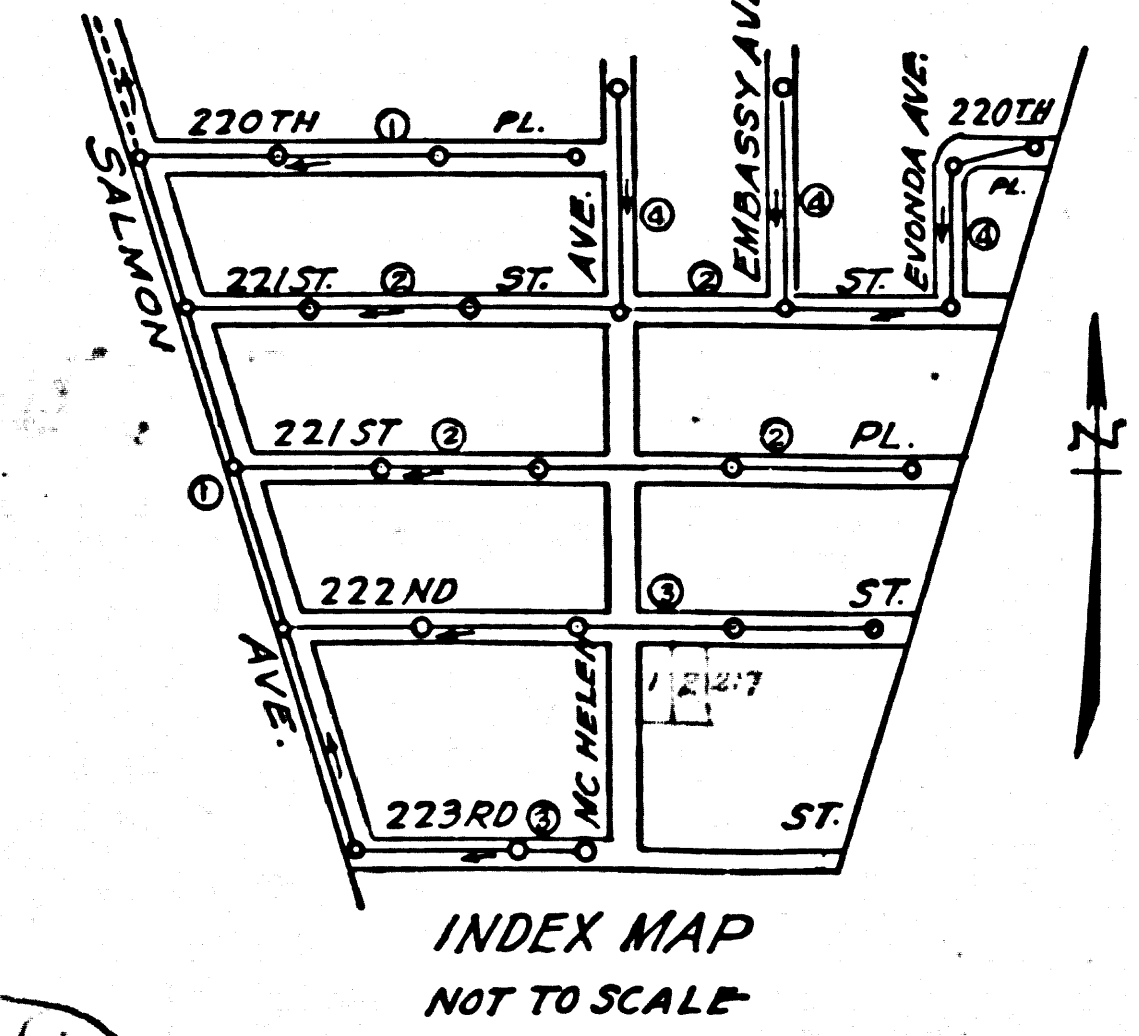
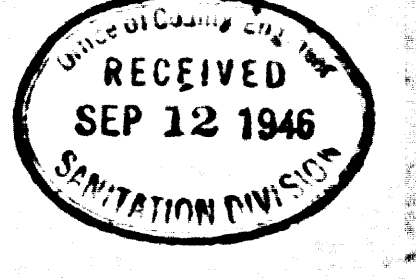
NOTE:  
 GRADES TO WHICH THIS IMPROVEMENT IS TO BE CONSTRUCTED ARE SHOWN ON  
 PLANS AND PROFILE.  
 GRADE POINTS FOR TOP OF CURB OR CENTER LINE OF STREET ARE SHOWN BY CIRCLES  
 ON PROFILE.  
 AT ALL POINTS BETWEEN DESIGNATED POINTS THE GRADE SHALL BE ESTABLISHED SO AS TO  
 CONFORM TO A STRAIGHT LINE DRAWN BETWEEN SAID DESIGNATED POINTS.  
 ELEVATIONS ARE IN FEET ABOVE U.S.G.S. DATUM OR MEAN SEA LEVEL.  
 THIS DRAWING AND THE DATA HEREON ARE HEREBY MADE A PART OF THE SPECIFICATIONS.  
 WORK SHALL BE CONSTRUCTED ACCORDING TO SPECIFICATIONS ON FILE IN THE OFFICE OF THE  
 COUNTY ENGINEER AND SHALL BE PROSECUTED ONLY IN THE PRESENCE OF THE COUNTY ENGINEER.

COUNTY OF LOS ANGELES - CALIFORNIA

APPROVED Alfred Jones COUNTY ENGINEER

APPROVED C.R. ... ACTING CHIEF ENGINEER OF COUNTY SANITATION DIST. NO. 8

CHECKED BY W.T. ... OFFICE OF COUNTY ENGINEER REG. C.E. NO. 6330



Final Ck. T.T.P. 1/22/47

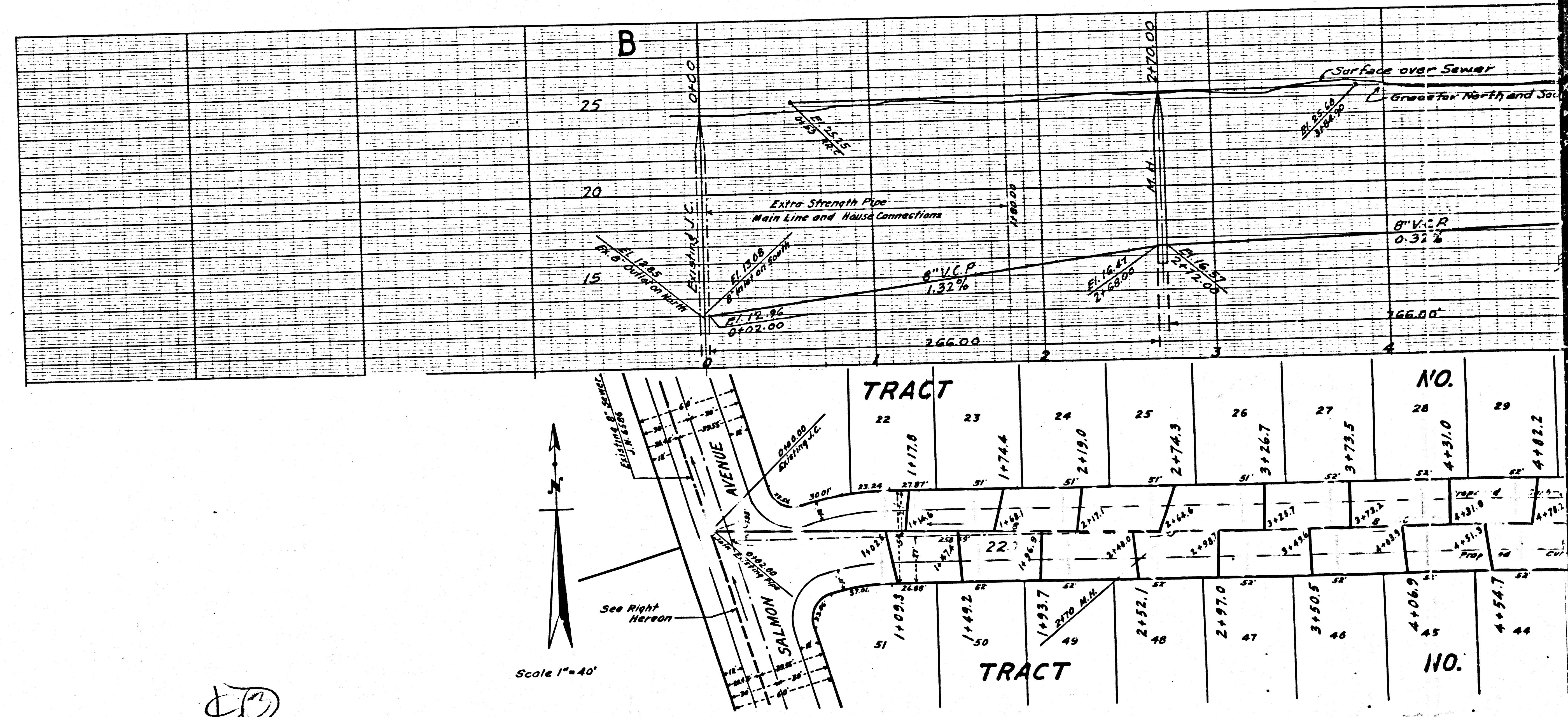




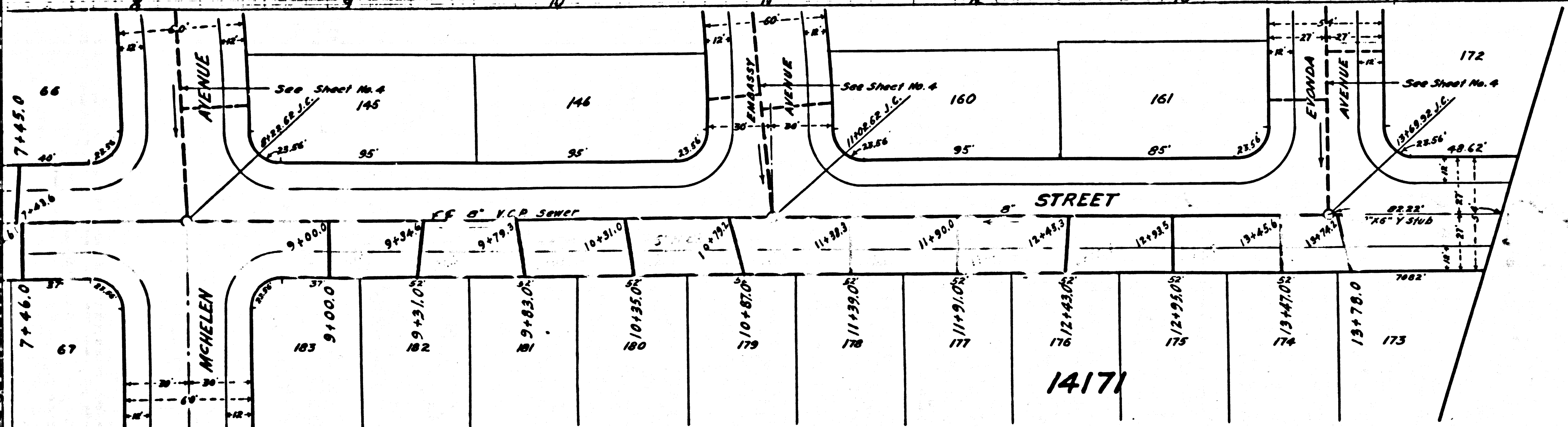
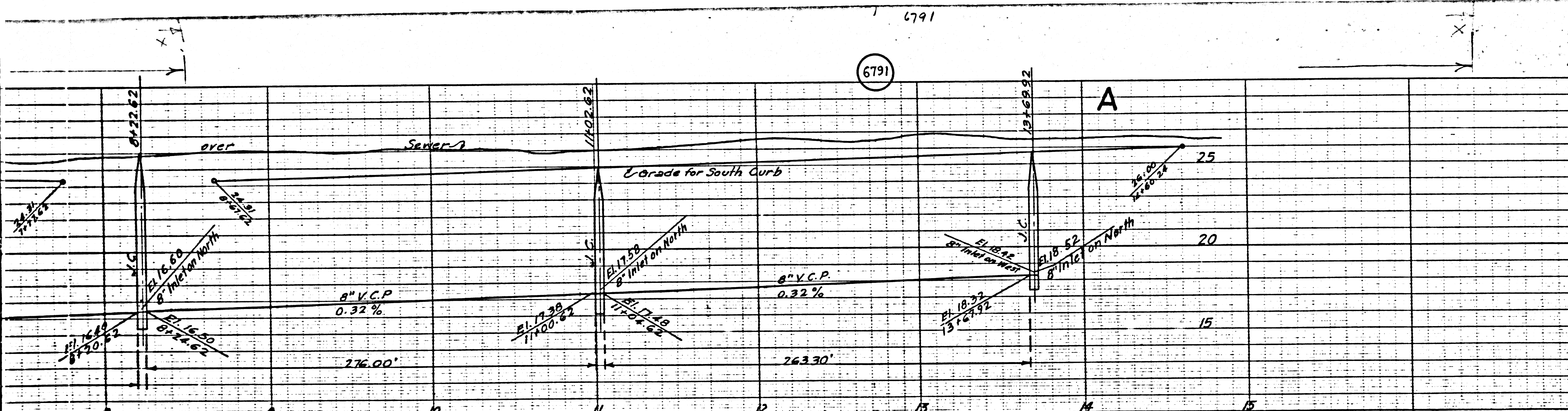


P.C. 398

EO







Note: For Construction Notes See Sheet 1



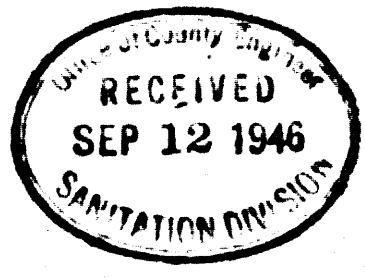
PROFILE, ALIGNMENT AND GRADE OF  
**SANITARY SEWERS**  
 TO BE CONSTRUCTED IN  
**221ST STREET**  
 BETWEEN EVONDA ST. AND SALMON AVE.  
 AND  
**221ST PLACE**  
 FROM A POINT 508 FT. EAST OF MEHELEN AVE. TO SALMON AVE.

PRIVATE CONTRACT NO. 398  
 W. S. 30  
 SHEET 2 OF 4 SHEETS  
 SCALES: VERT. 1" = 4'  
 HORIZ. 1" = 40'      JUNE 22, 1946  
 PREPARED IN THE OFFICE OF  
 E. F. KOENIG, ENGINEER

BY: E. F. Koenig  
 REG. C.E. No. 3692

FOR LEGEND  
 SEE PLAN NO. S.A. 6.

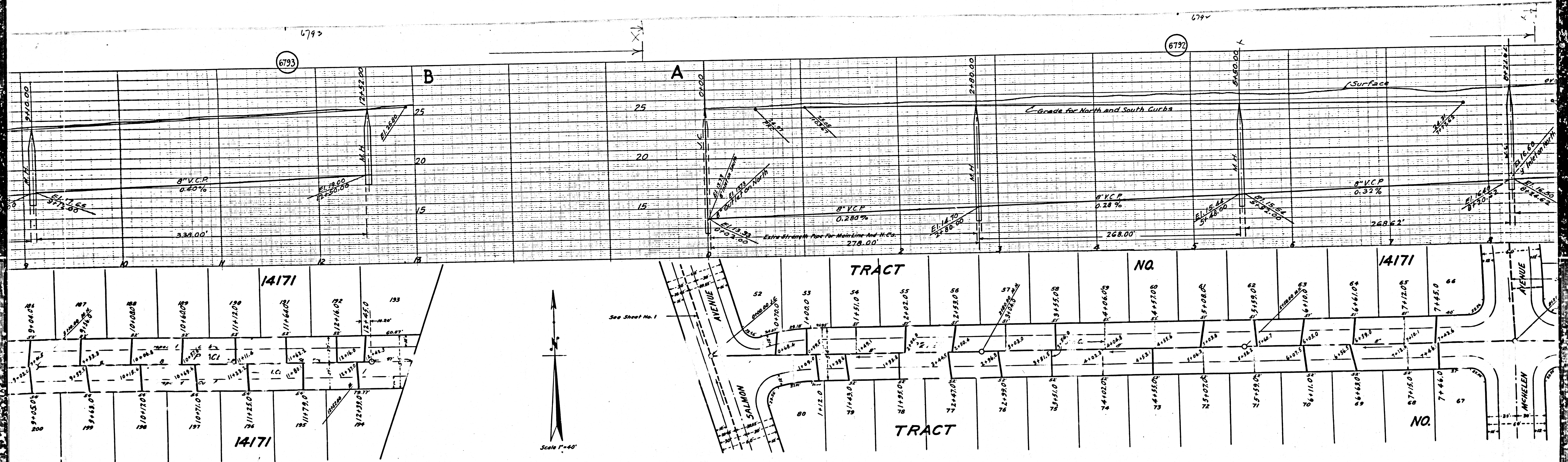
COUNTY OF LOS ANGELES - CALIFORNIA  
 APPROVED: Alfred Jones  
 COUNTY ENGINEER  
 APPROVED: C. R. Cameron  
 ACTING CHIEF ENGINEER OF COUNTY SANITATION DIST. NO. 8  
 CHECKED BY: AWK  
 OFFICE OF COUNTY ENGINEER, REG. CE. NO. 6327



Final CR 7/12/46

BC 308





6793

6792

B

A

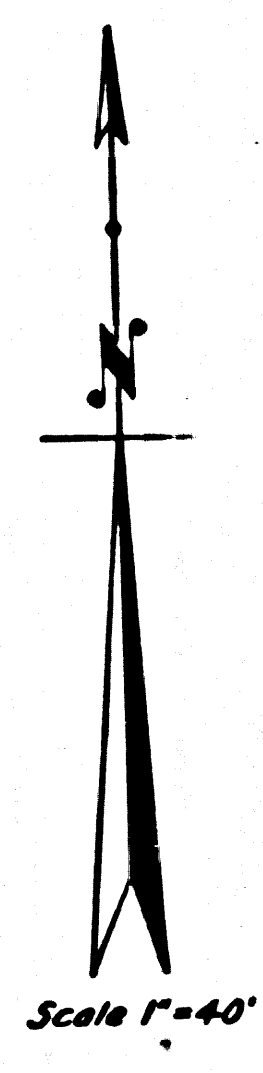
TRACT

NO.

14171

TRACT

NO.



See Sheet No. 1

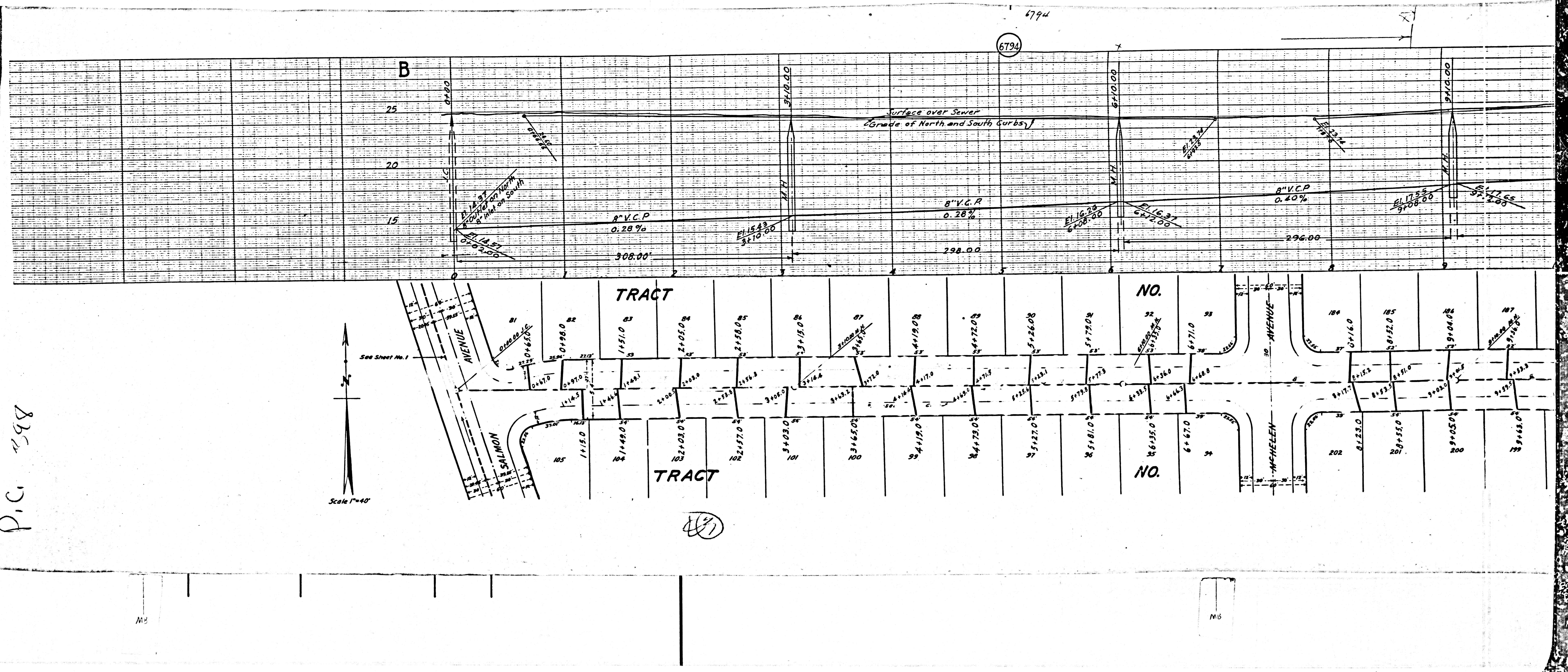
60

M5

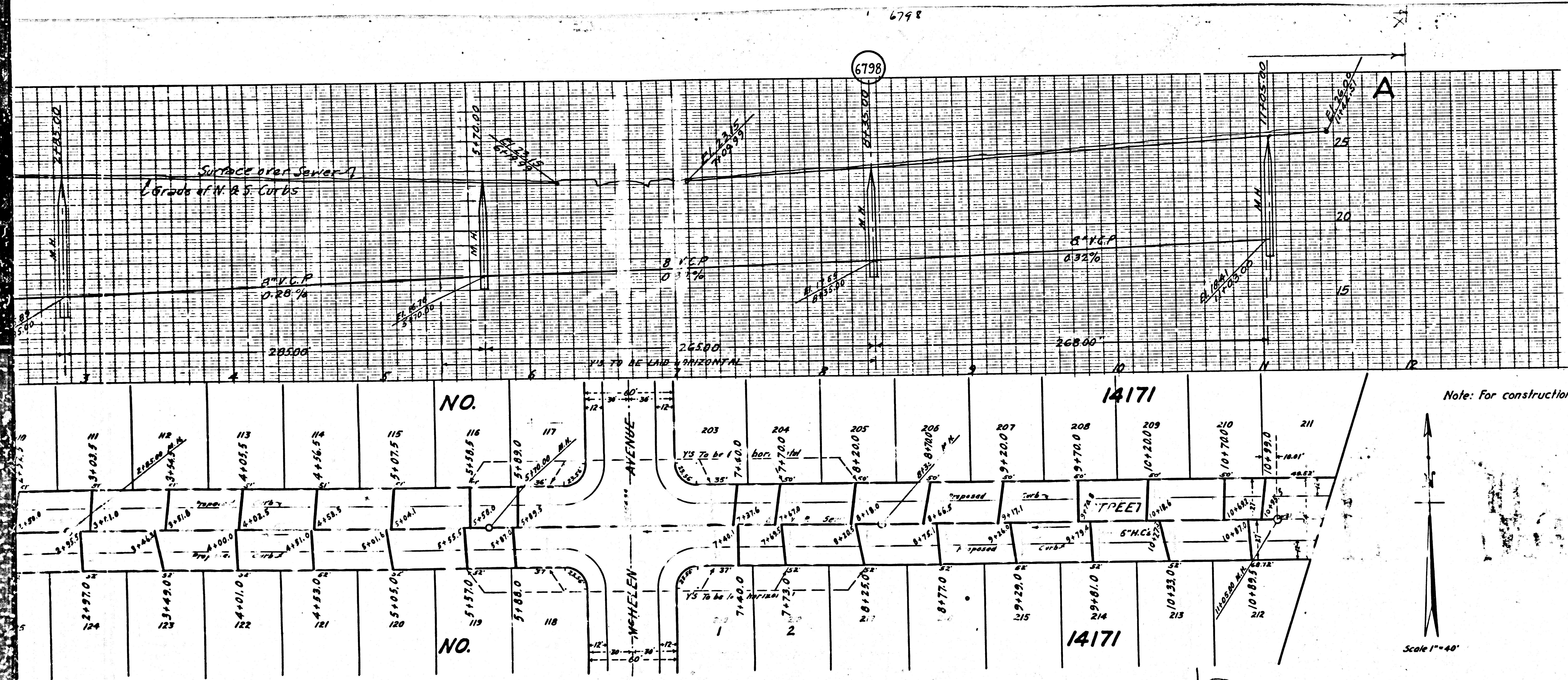
M6



P.C. 298



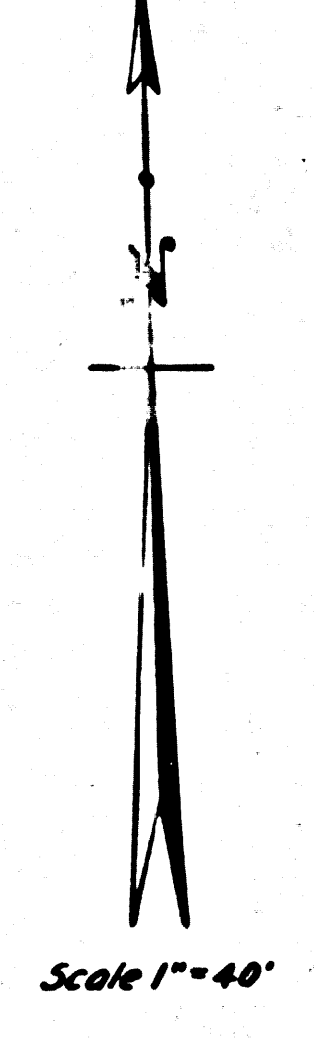




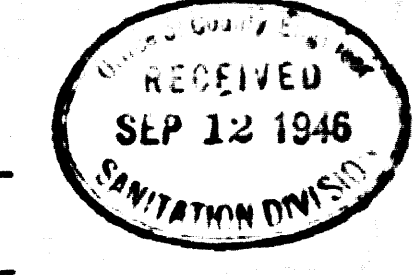
PROFILE, ALIGNMENT AND GRADE OF  
**SANITARY SEWERS**  
 TO BE CONSTRUCTED IN  
**222<sup>ND</sup> STREET**  
 FROM A POINT 440 FT. EAST OF McHELEN AVE. TO SALMON AVE.  
 AND  
**223<sup>RD</sup> STREET**  
 McHELEN AVENUE TO SALMON AVENUE  
 PRIVATE CONTRACT NO. 398 --  
 W.S. 30 --  
 SHEET 3 OF 4 SHEETS  
 SCALES: VERT. 1"=4'      JUNE 24, 1946  
 HORIZ. 1"=40'  
 PREPARED IN THE OFFICE OF  
**E. F. KOENIG, ENGINEER**

BY E. F. Koenig  
 REG. C.E. No. 3692  
 FOR LEGEND  
 SEE PLAN NO. S.A.C.

Note: For construction notes see sheet 1



**COUNTY OF LOS ANGELES, CALIFORNIA**  
 APPROVED Alfred Javor COUNTY ENGINEER  
 APPROVED C. R. Smith ACTING CHIEF ENGINEER OF COUNTY SANITATION DIST. NO. 8  
 CHECKED BY W. J. ... OFFICE OF COUNTY ENGINEER, REG. C.E. NO. 4330



Final Ck T.P. 1/20/47

DC 308





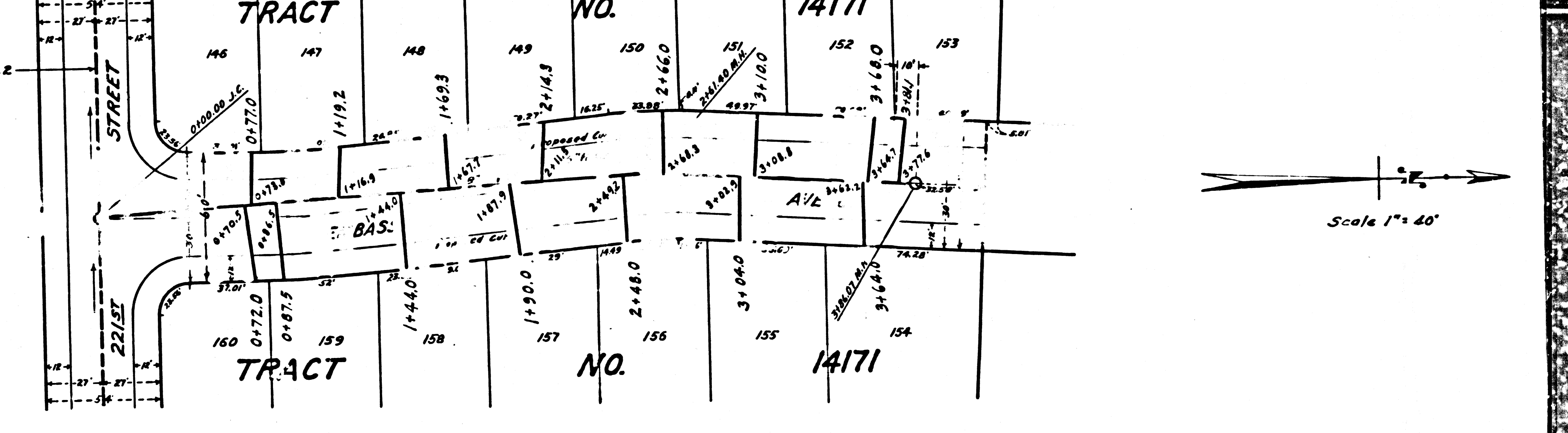
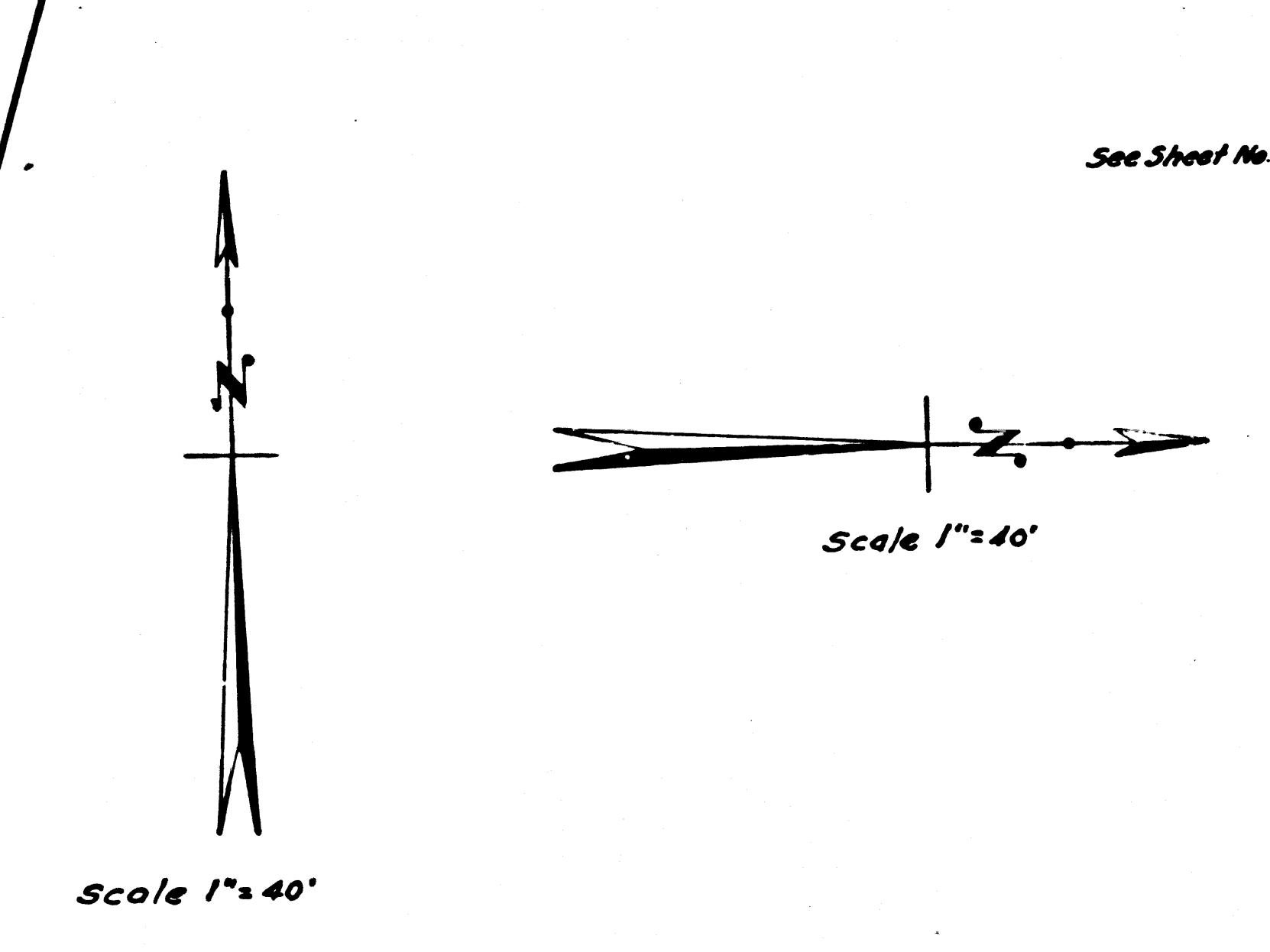
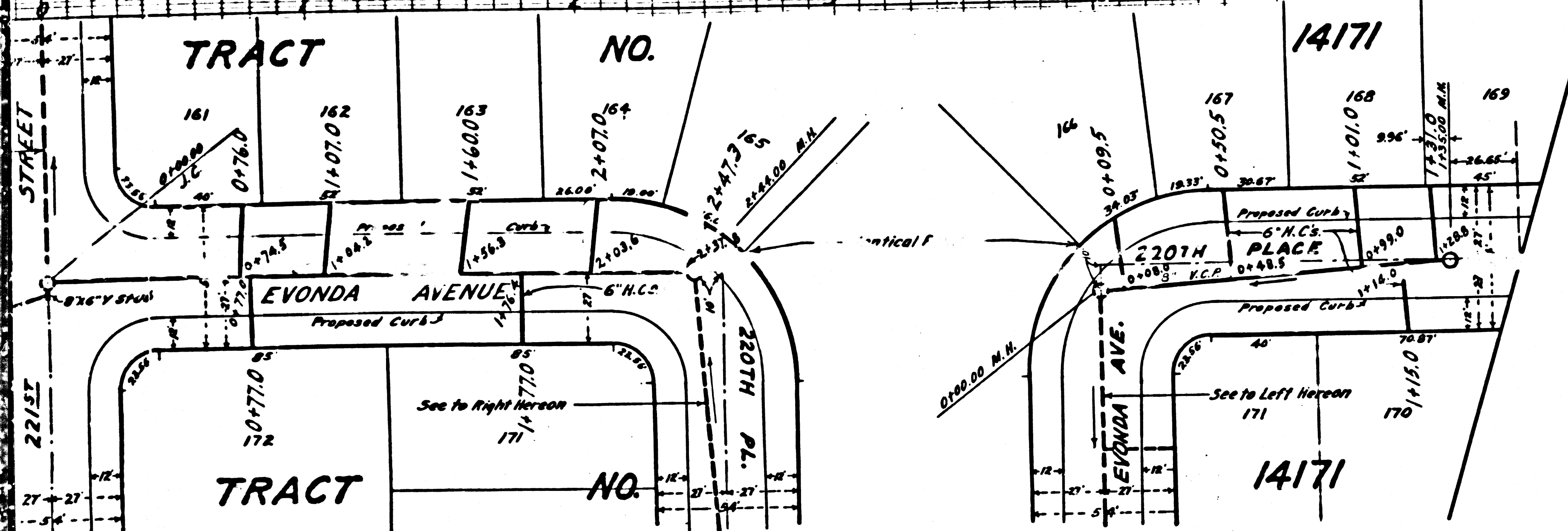
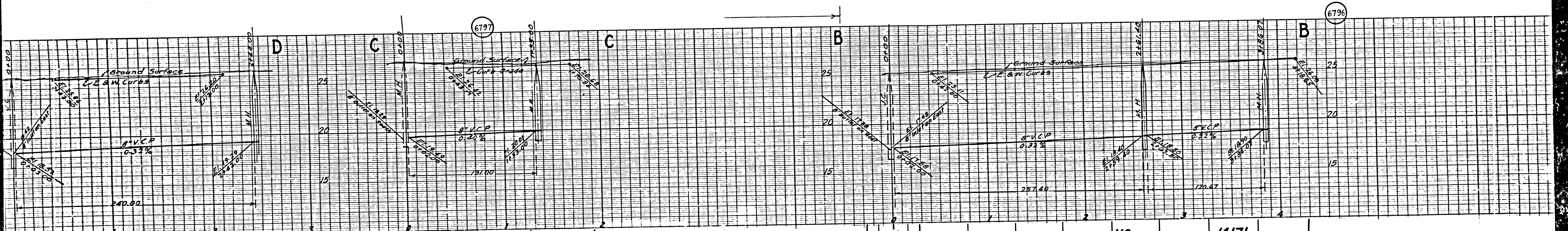












60