

1. USE STANDARD MANHOLE FRAMES AND COVERS - 30-116, EXCEPT AS NOTED.
2. USE STANDARD STRENGTH PIPE EXCEPT AS NOTED.
3. USE CEMENT MORTAR FOR ALL VITRIFIED CLAY PIPE JOINTS.
4. RESURFACE ALL TRENCH WITHIN PAVED AREA TO MEET LOS ANGELES COUNTY ROAD DEPT. REQUIREMENTS.
5. CONSTRUCT HOUSE CONNECTIONS WITH INVERT AT CURB LINE 5 FEET BELOW CURB GRADE.
6. ENCASE FOUR FEET OF SEWER AT POINTS OF INTERFERENCE WITH POLES AS PER S-0-6.
7. ALL STRUCTURES SHALL BE BRICK SEWER STRUCTURES 30-104.
8. CONSTRUCT TOPS OF ALL STRUCTURES IN RIGHTS OF WAY 6" ABOVE FINISHED GRADE.

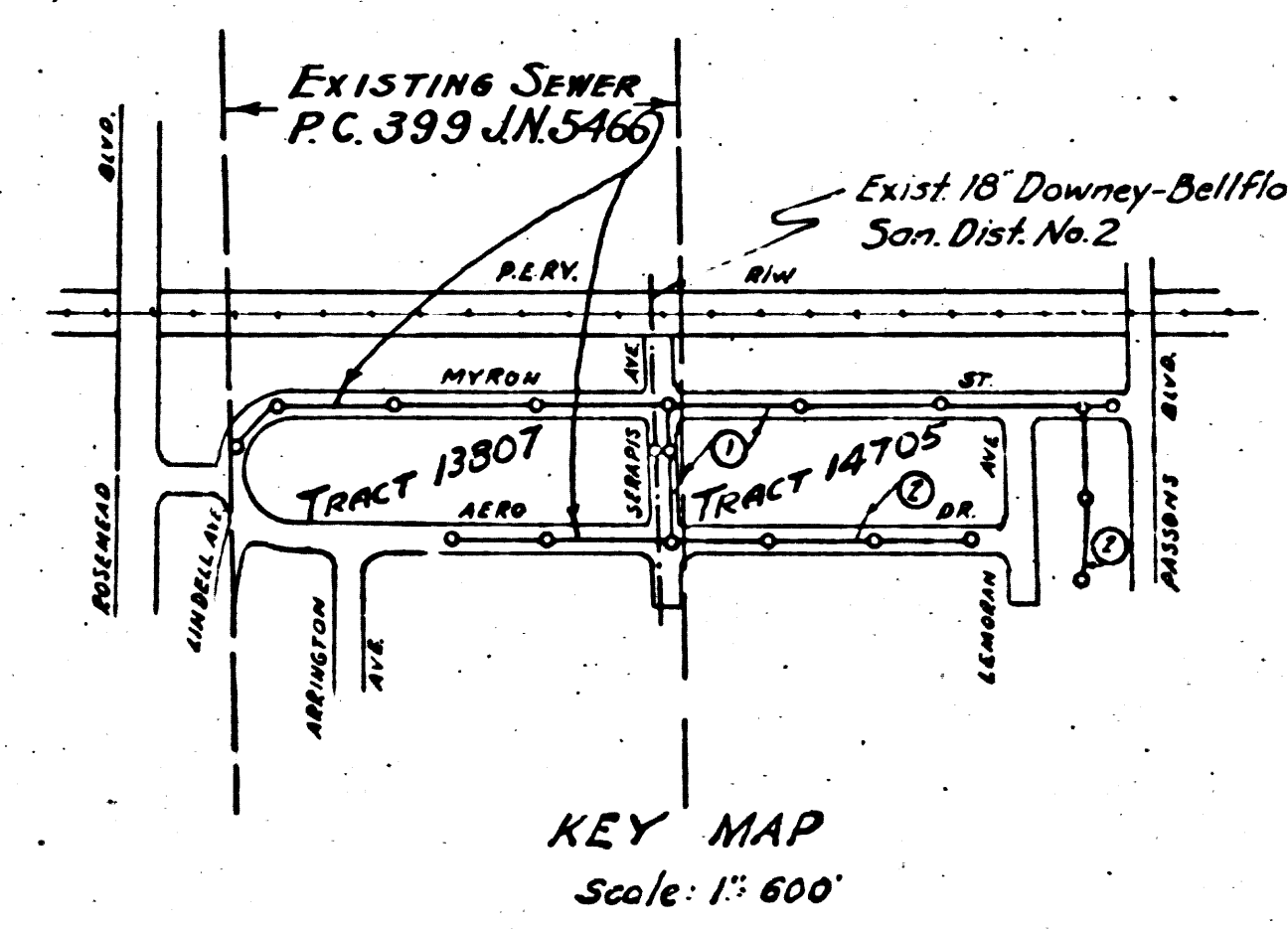
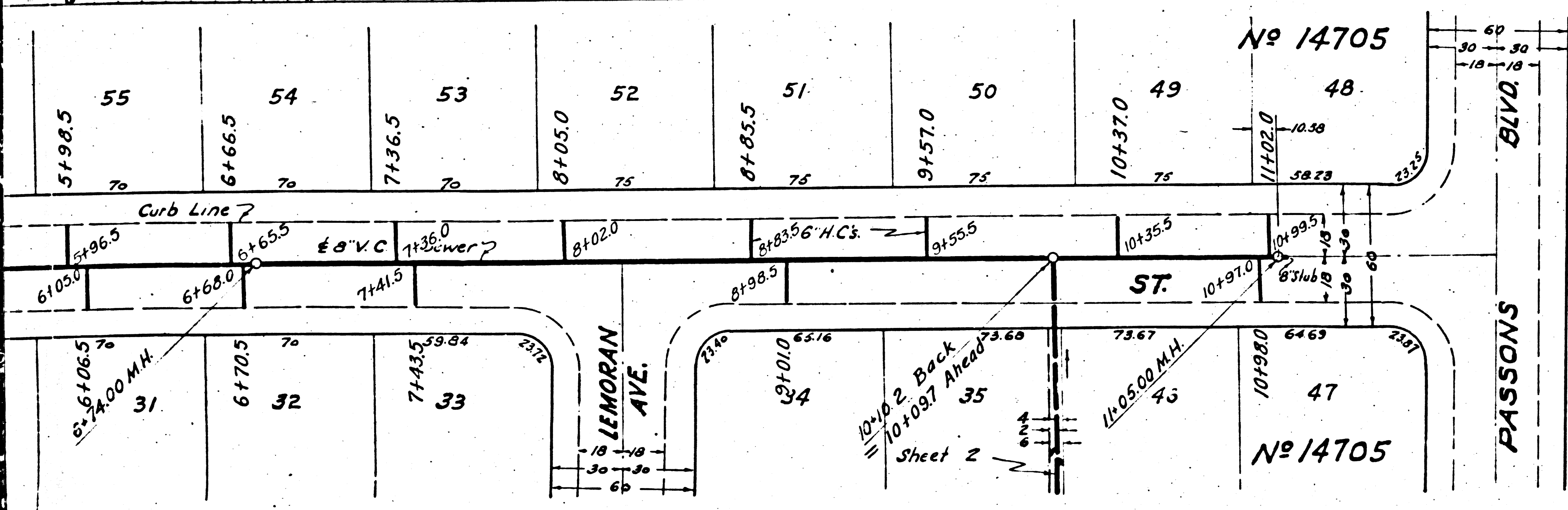
PROFILE ALIGNMENT AND GRADE OF
SANITARY SEWERS
 TO BE CONSTRUCTED IN
MYRON ST.
 BETWEEN PASSONS BLVD AND AERO DR
SERAPIS AVE.
 BETWEEN AERO DR AND MYRON ST

PRIVATE CONTRACT NO. 399-A
 W.S. 26
 JN 5601

SHEET 1 OF 2 SHEETS

PREPARED IN THE OFFICE OF
 WM. H. FAIR JR.
 MAY 1946

BY *W. H. Fair Jr.*
 REG. C.E. NO. 5939



FOR LEGEND
 SEE PLAN NO. 8-6-64

NOTE:
 GRADES TO WHICH THIS IMPROVEMENT IS TO BE CONSTRUCTED ARE SHOWN ON PLANS AND PROFILE. GRADE POINTS FOR TOP OF CURB, CENTER LINE OF STREET OR CENTER LINE OF ALLEY ARE SHOWN BY CIRCLES ON PROFILES. AT ALL POINTS BETWEEN DESIGNATED POINTS THE GRADE SHALL BE ESTABLISHED SO AS TO CONFORM TO A STRAIGHT LINE DRAWN BETWEEN SAID DESIGNATED POINTS. ELEVATIONS ARE IN FEET ABOVE U.S.S. MEAN SEA LEVEL.

THIS DRAWING AND THE DATA HEREON ARE HEREBY MADE A PART OF THE SPECIFICATIONS. WORK SHALL BE CONSTRUCTED ACCORDING TO SPECIFICATIONS ON FILE IN THE OFFICE OF THE COUNTY ENGINEER AND SHALL BE PROSECUTED ONLY IN THE PRESENCE OF THE COUNTY ENGINEER. BEFORE WORK CAN BE STARTED, THE CONTRACTOR MUST OBTAIN A PERMIT TO EXCAVATE IN COUNTY STREETS FROM THE L.A. COUNTY ROAD DEPT. 1024 HALL OF RECORDS AND MAKE A DEPOSIT WITH THE COUNTY ENGINEER TO THE HIGH LEASE BUILDING, SUFFICIENT TO COVER THE COST OF CONSTRUCTION INSPECTION AND RECORD PLANS.

NO REPRESENTATIVE OF THE COUNTY ENGINEER WILL SURVEY OR LAY OUT ANY PORTION OF THE WORK. THE OWNER OR HIS AUTHORIZED REPRESENTATIVE SHALL FURNISH THE COUNTY ENGINEER WITH GRAD AND STATIONS OF ALL HOUSE CONNECTIONS AND Y BRANCHES AND SHALL PROVIDE STAKES OR THEM AT THE PROPER LOCATIONS WITH THE STATIONING PLAINLY MARKED. ANY CHANGE OF LOCATION SHALL BE PROVE WRITING BY THE OWNER OR HIS REPRESENTATIVE.

COUNTY OF LOS ANGELES, CALIFORNIA

APPROVED *Alfred Jones* COUNTY ENGINEER

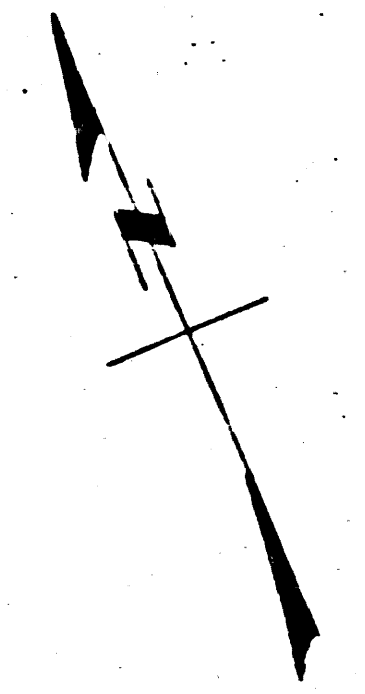
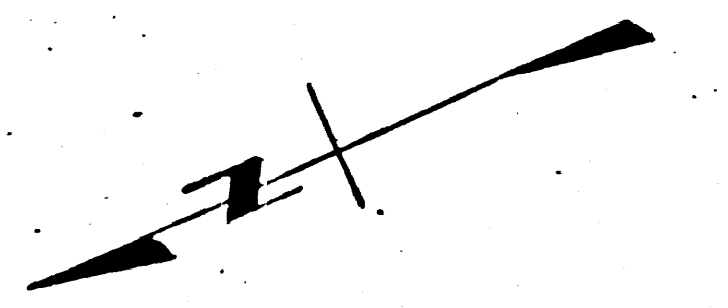
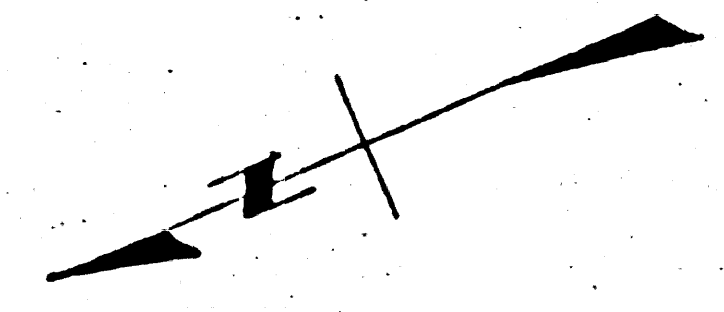
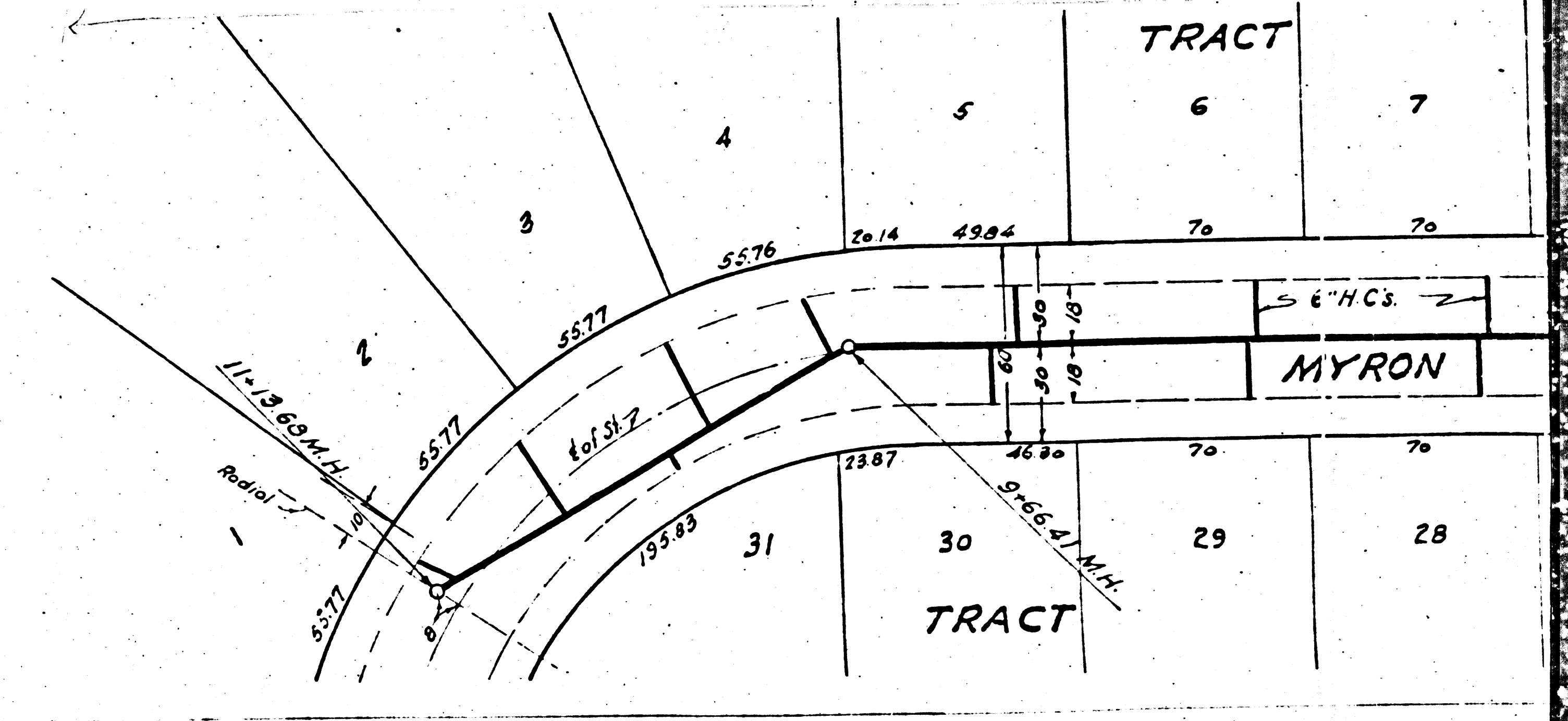
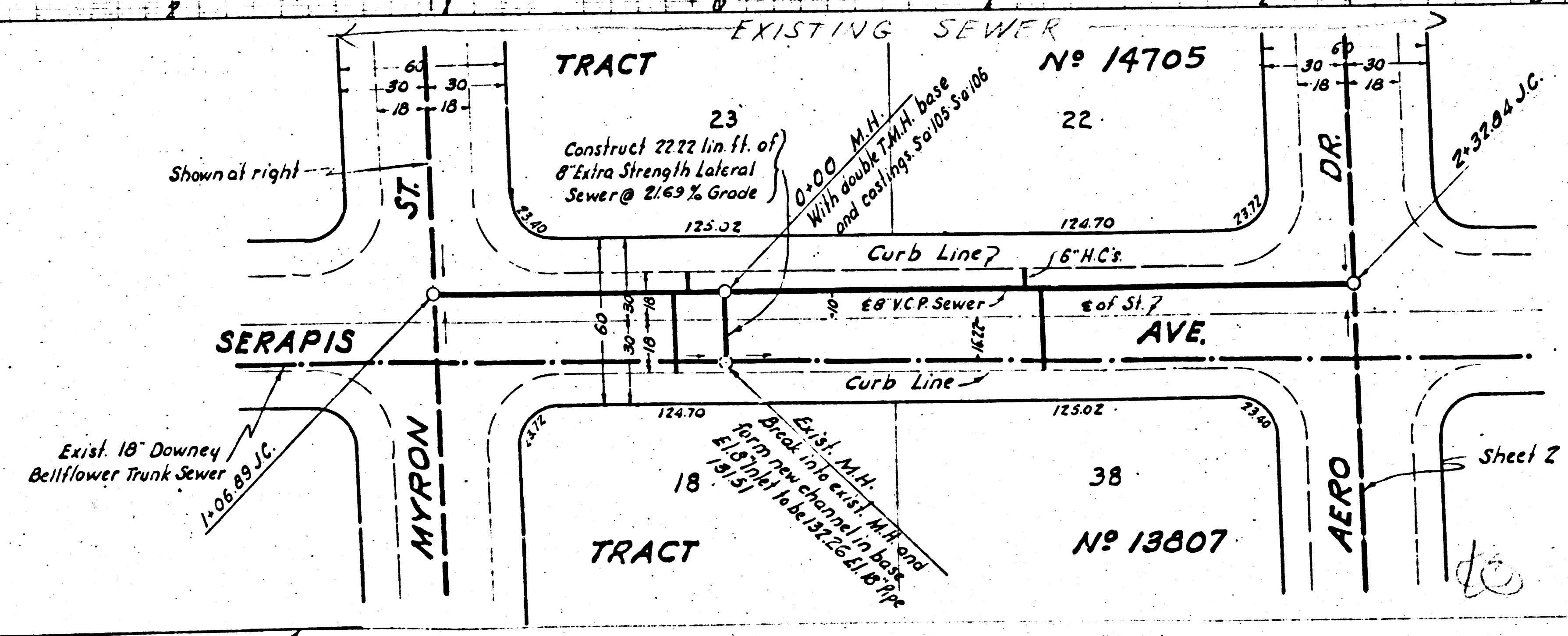
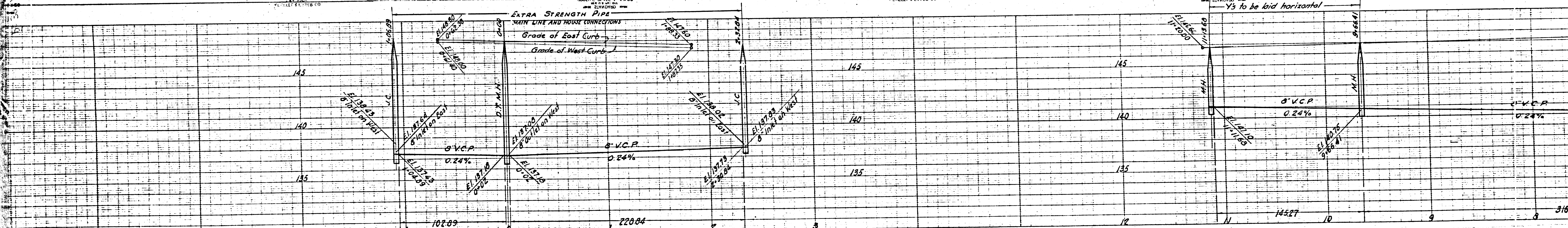
CHECKED BY *awf* OFFICE OF COUN.

Trim Line

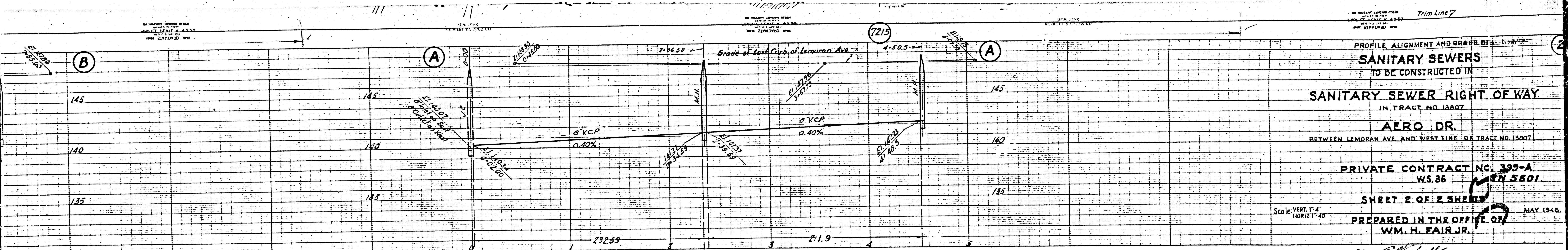
EXTRA STRENGTH PIPE
MAIN LINE AND HOUSE CONNECTIONS

Trim Line

1/3 to be laid horizontal



Sheet 2



PROFILE ALIGNMENT AND GRADE OF
SANITARY SEWERS
 TO BE CONSTRUCTED IN
SANITARY SEWER RIGHT OF WAY
 IN TRACT NO. 13807
AERO DR.
 BETWEEN LEMORAN AVE. AND WEST LINE OF TRACT NO. 13807

PRIVATE CONTRACT NO. 392-A
 WS. 36
MAY 5601

SHEET 2 OF 2 SHEETS
 PREPARED IN THE OFFICE OF
WM. H. FAIR, JR.

Scale: VERT. 1"=4'
 HORIZ. 1"=40'

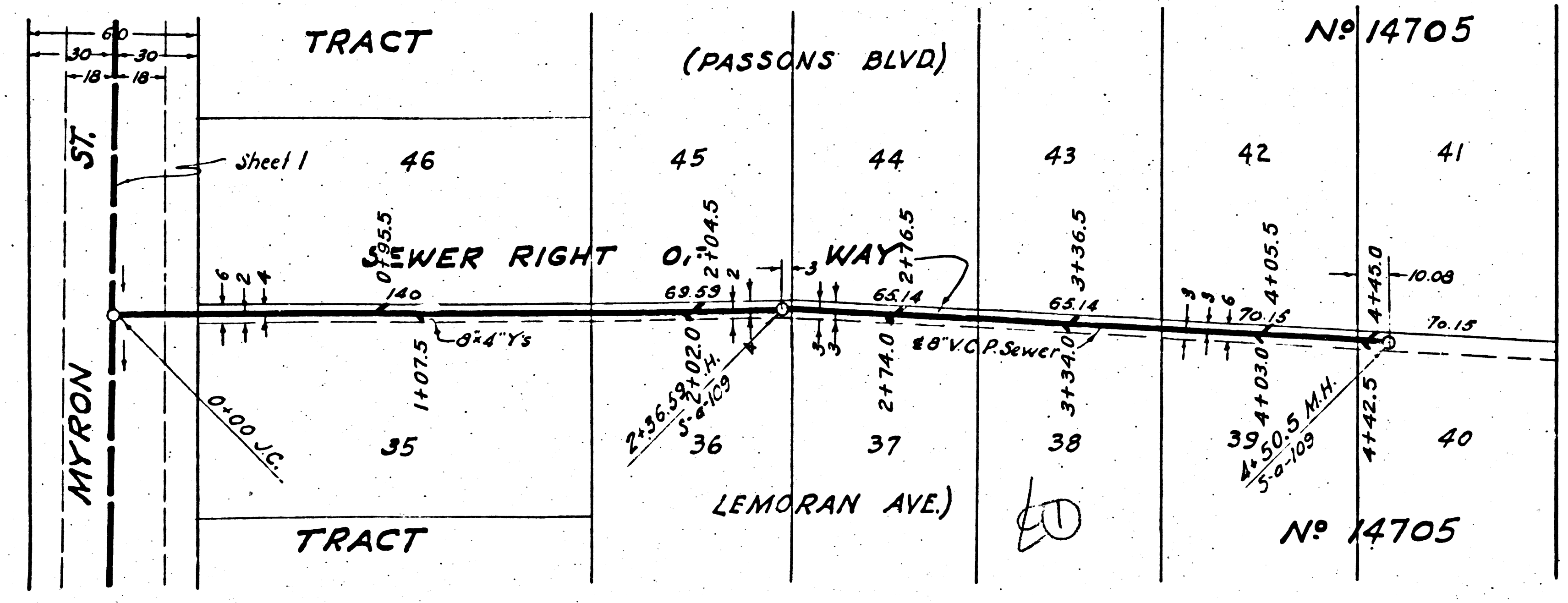
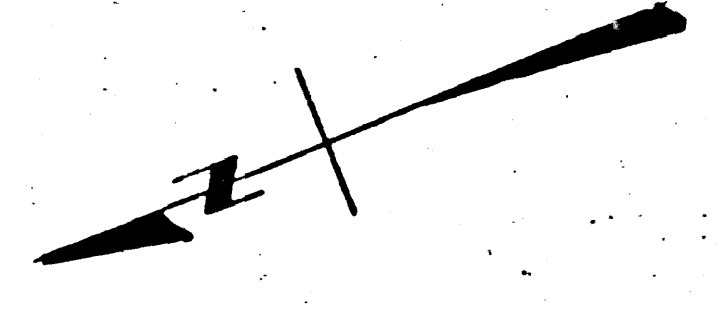
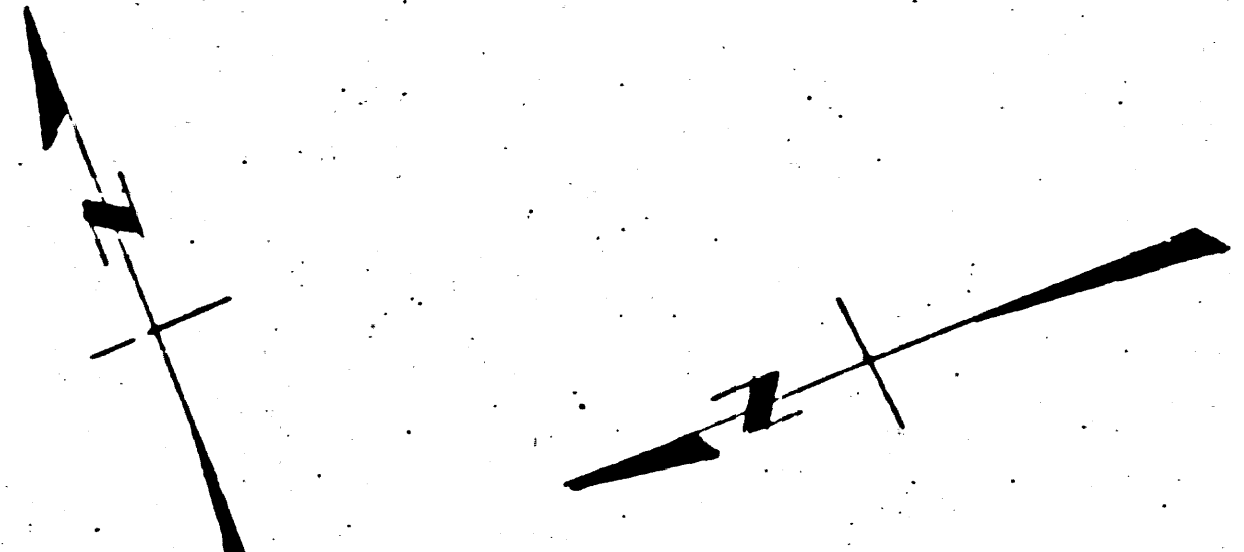
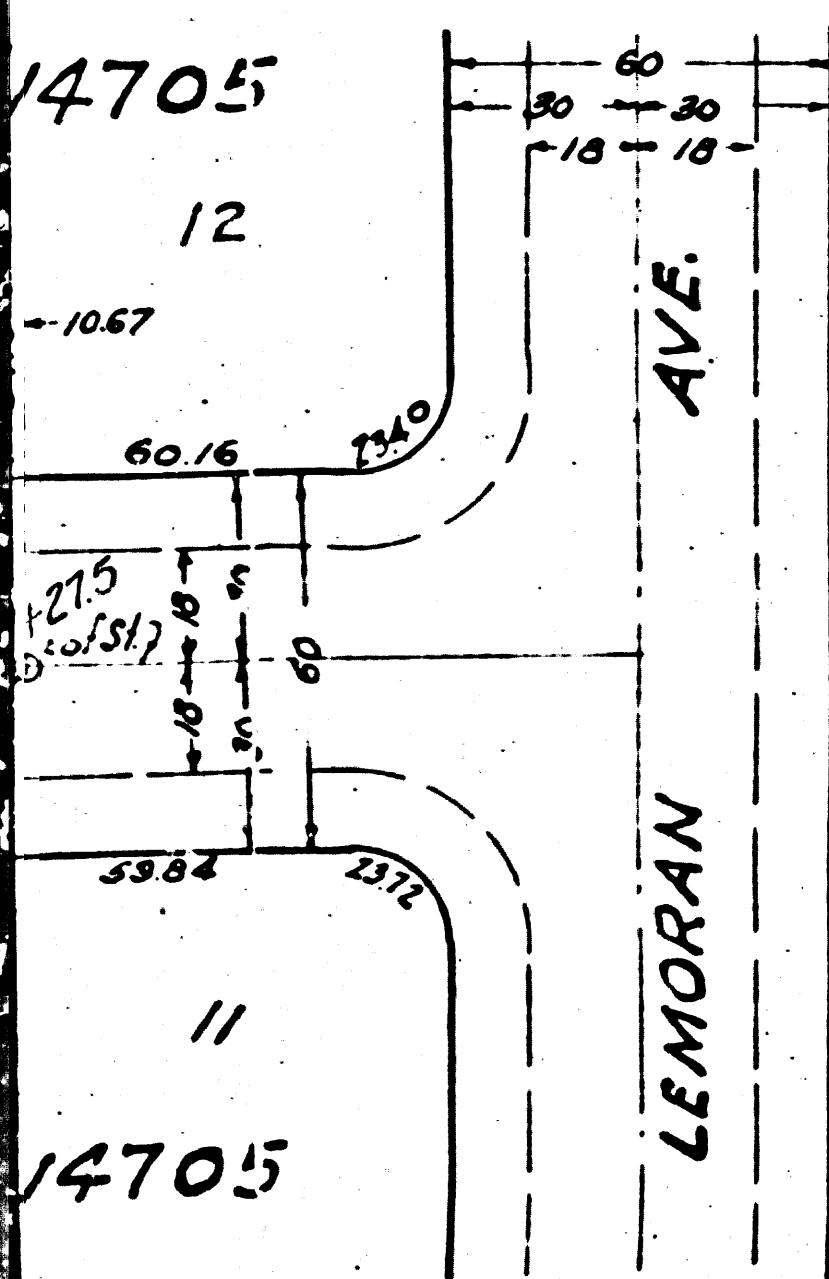
BY *E. McCall*
 Reg. C.E. No. 5939

FOR LEGEND
 SEE PLAN NO. 30-64
 FOR CONSTRUCTION NOTES SEE SHEET NO. 1

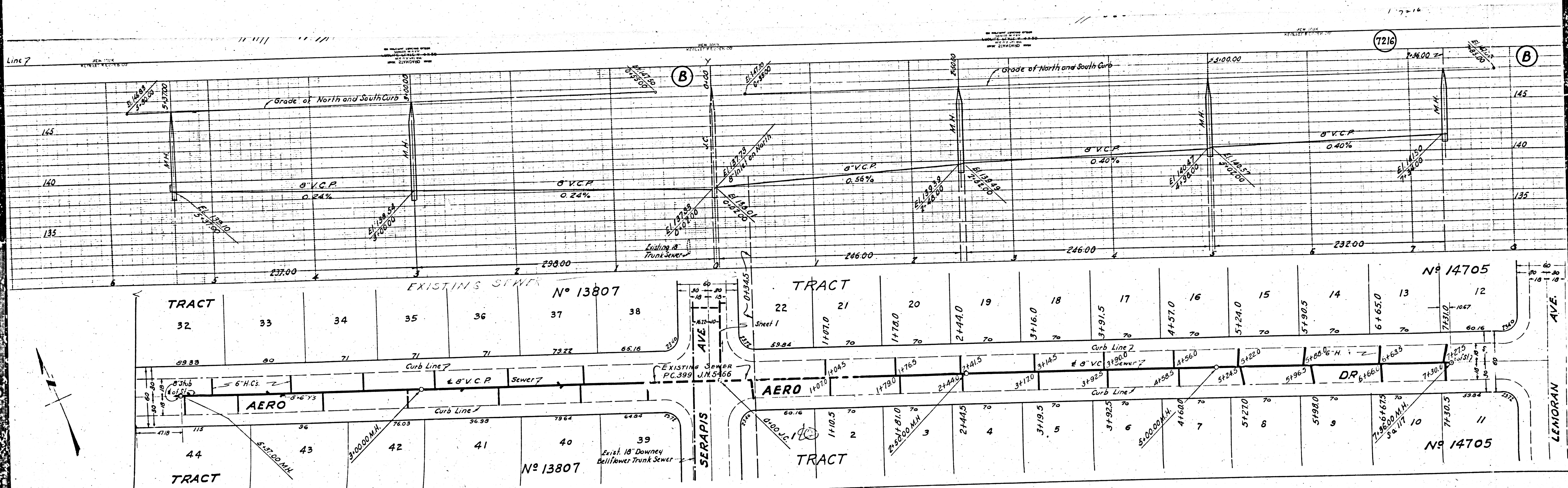
COUNTY OF LOS ANGELES, CALIFORNIA

APPROVED *Alfred J. [Signature]* APPROVED *[Signature]*
 COUNTY ENGINEER CHIEF OF DISTRICT OF COUNTY
 SANITATION DISTRICT NO. 2

CHECKED BY *Alfred J. [Signature]* 13 19 46
 OFFICE OF COUNTY ENGINEER, REG. NO. 6030

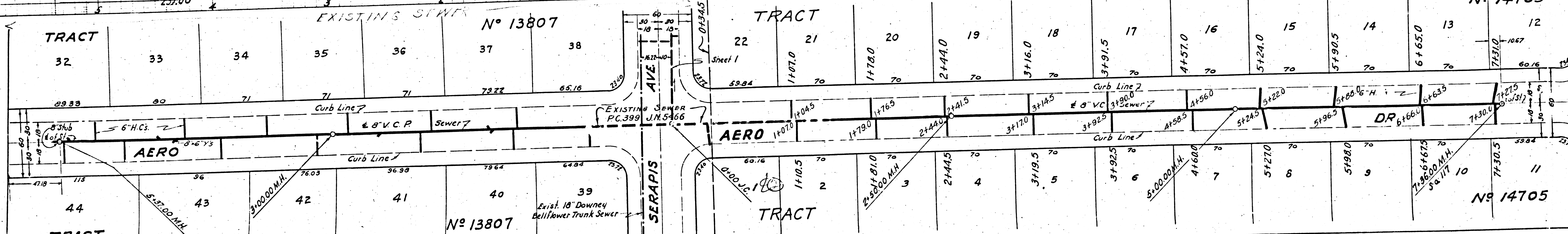


Trim Line



7216

B



LENORAN AVE.