

DOUBLE SCALE

1. Use Standard Manhole Frames and Covers as per S-a-117
2. Use Standard Strength Pipe except as noted.
3. Use Cement Mortar for all Vitrified Clay Pipe Joints.
4. Resurface all trench within Paved Area to meet L.A. County Road Dept. requirements
5. Excuse 4 feet of Sewer at points of interference with Poles as per S-a-118
6. All Structures shall be brick Sewer Structures, S-a-104
7. House Connections to be constructed with inverts at Property Line 5' below Curb Grade, except as noted.

NOTE: No representative of the County Engineer will survey or lay out any portion of the work. The Owner or his authorized representative shall furnish the County Engineer with Grade Stakes and Stationing at all House Connections and all House Connections shall be made in accordance with the proper local laws. Stationing plainly marked. Any change of location shall be requested in writing by the owner or his representative. No revision shall be made in these Plans without approval of the County Engineer.

PROFILE, ALIGNMENT AND GRADE OF
SANITARY SEWERS
 TO BE CONSTRUCTED IN
102ND STREET
 BETWEEN WILTON PL. & ARLINGTON AVE.
103RD STREET
103RD PLACE
104TH STREET
 BETWEEN WILTON PL. & HAAS AVE.
 PRIVATE CONTRACT No. 401
 W.S. 26
 SHEET 1 OF 2 SHEETS

PREPARED IN THE OFFICES OF
SEABOARD ENGINEERING CO.

BY **Mark A. Rubin**
 REG. C.E. No.

FOR LEGEND
 SEE PLAN No. S-a-0-04

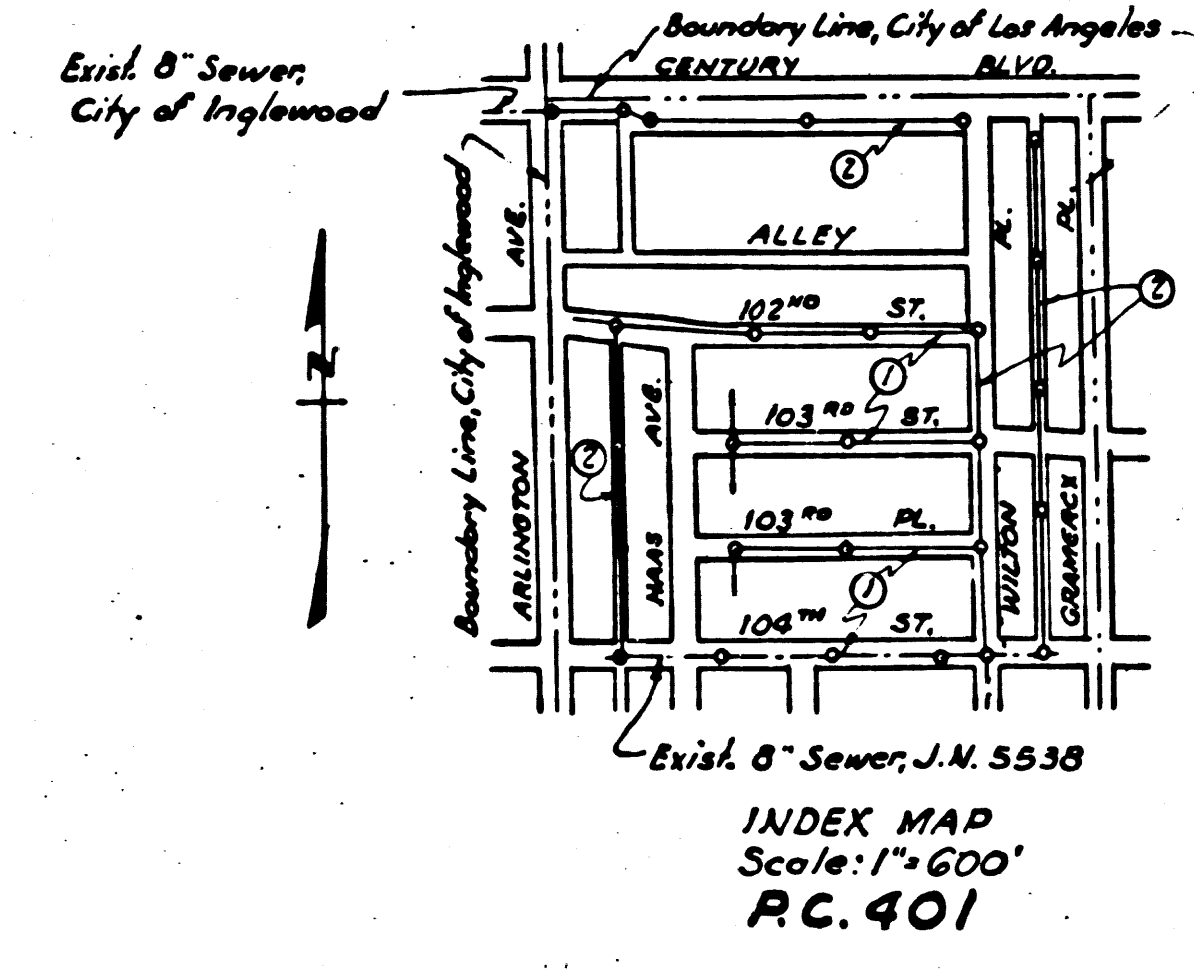
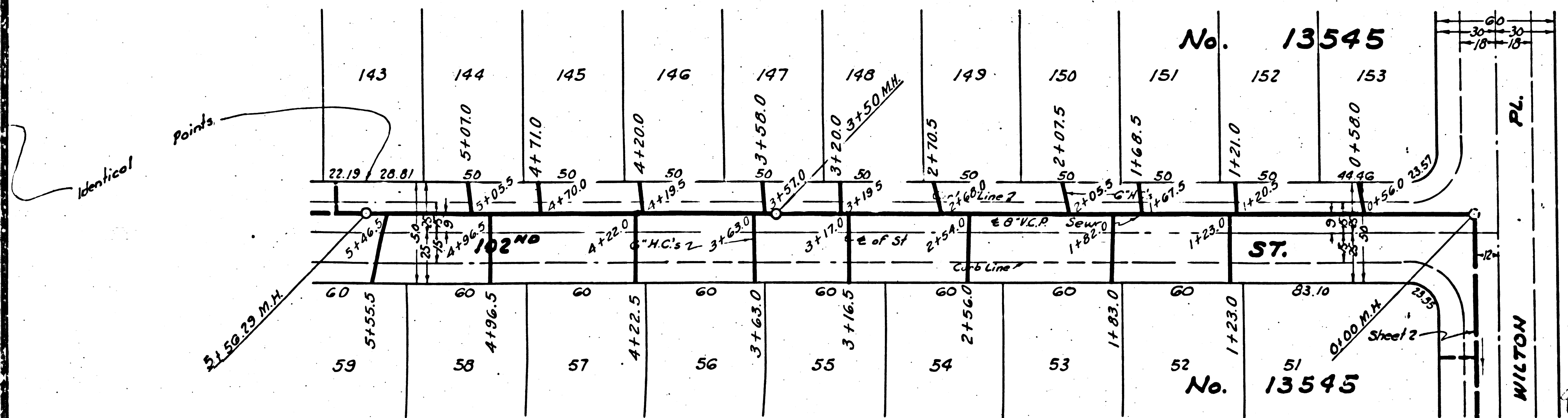
NOTE: Grades to which this improvement is to be constructed are shown on Plans and Profiles. Grade points for top of curb, center line of street or center line of alley are shown circles on Profiles. At all points between designated points the grade shall be interpolated so as to conform to a straight line drawn between said designated points. Elevations are in feet above U.S.C.S. Datum or Mean Sea Level. This drawing and the data hereon are hereby made a part of the Specifications. Work shall be constructed according to Specifications on file in the office of the County Engineer and shall be prosecuted only in the presence of the County Engineer. Before work can be started the Contractor must obtain a Permit to excavate in County Streets from the L.A. County Road Dept. 104 Hall of Records and make a deposit with the County Engineer 700 Fashion League Building sufficient to cover the cost of construction inspection and Record Plans.

COUNTY OF LOS ANGELES, CALIFORNIA

APPROVED **Alfred Jones**
 COUNTY ENGINEER

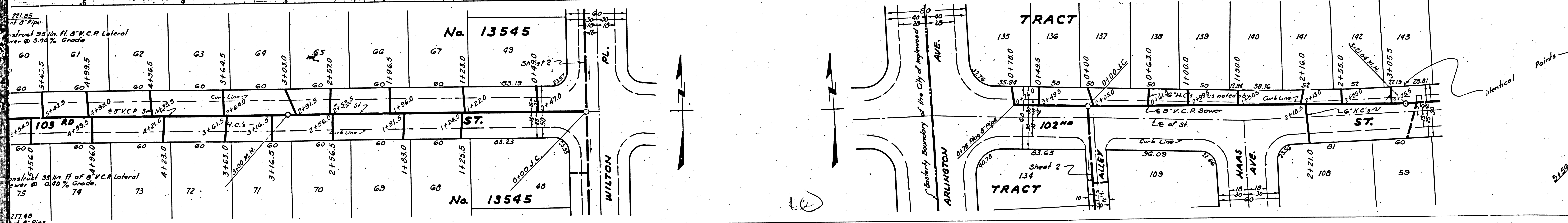
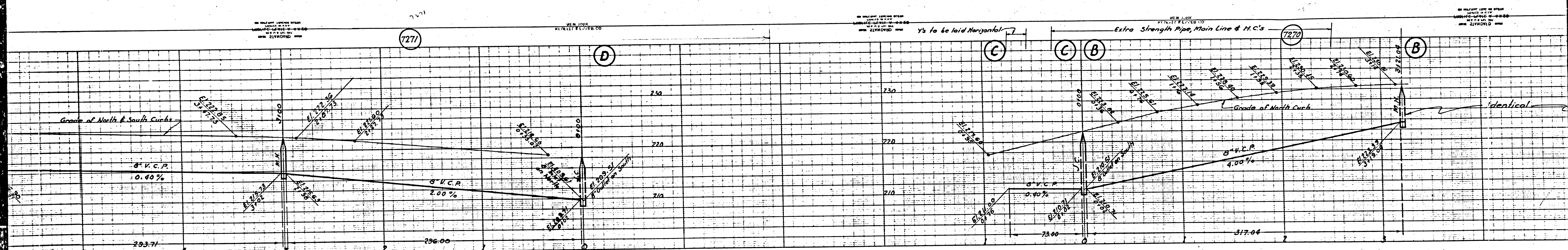
APPROVED **Carl ...**
 SUPERVISOR OF COUNTY
 SANITATION DISTRICT No. 5

CHECKED BY **John B. ...** 4/30/1947
 OFFICE OF COUNTY ENGINEER, REG. C.E. No. 6622



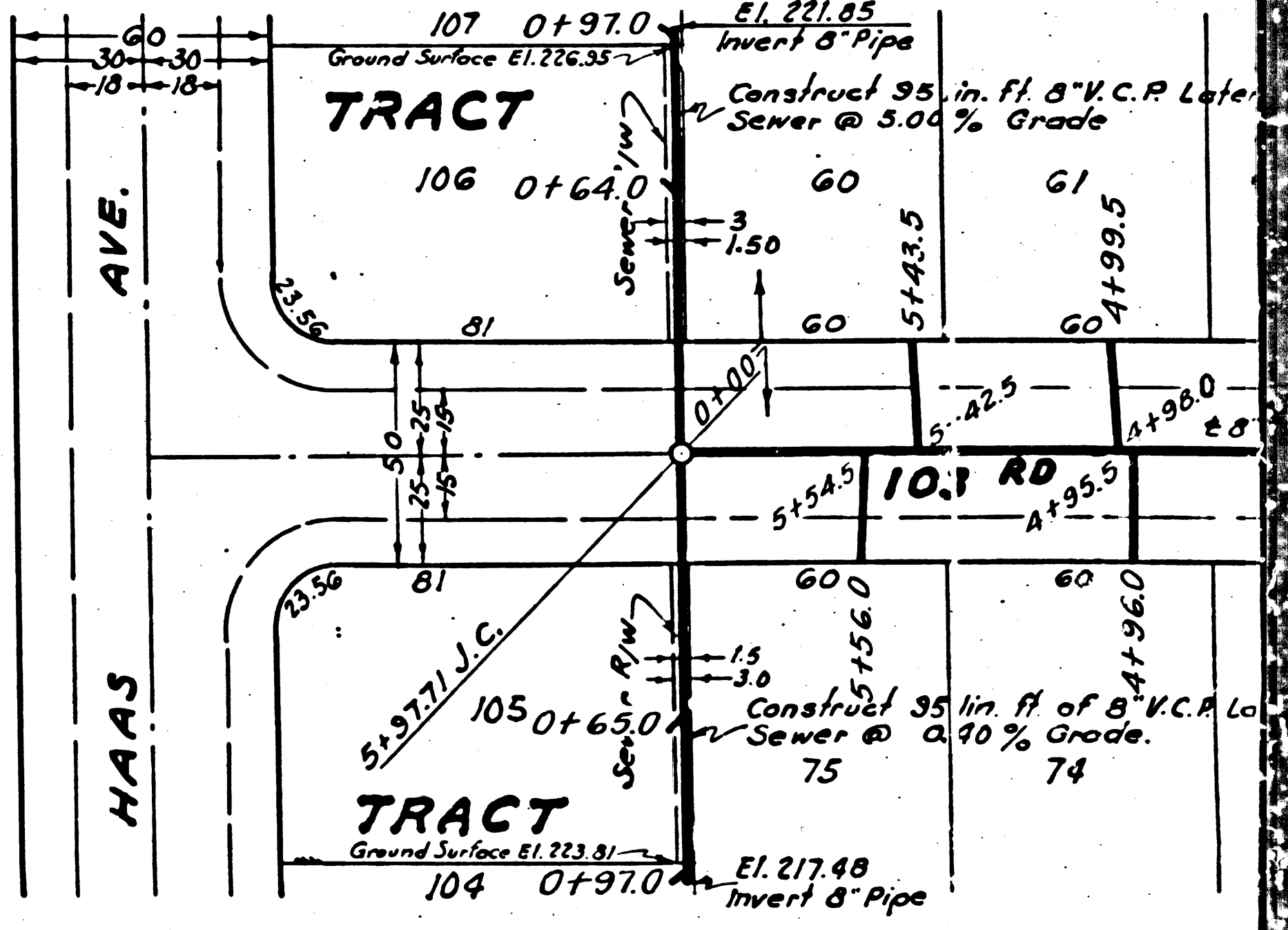
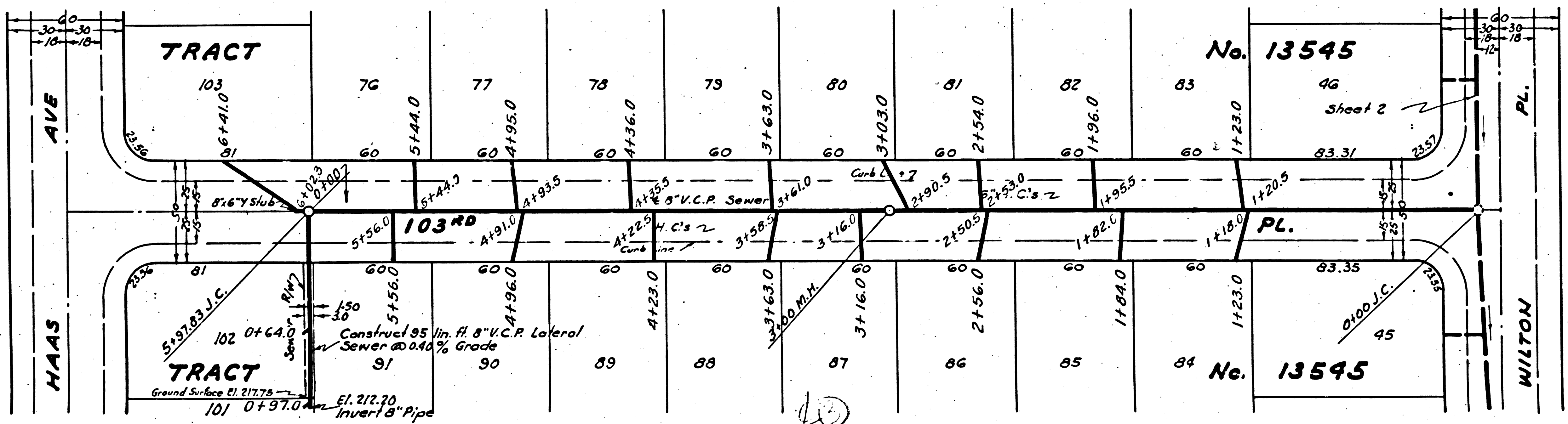
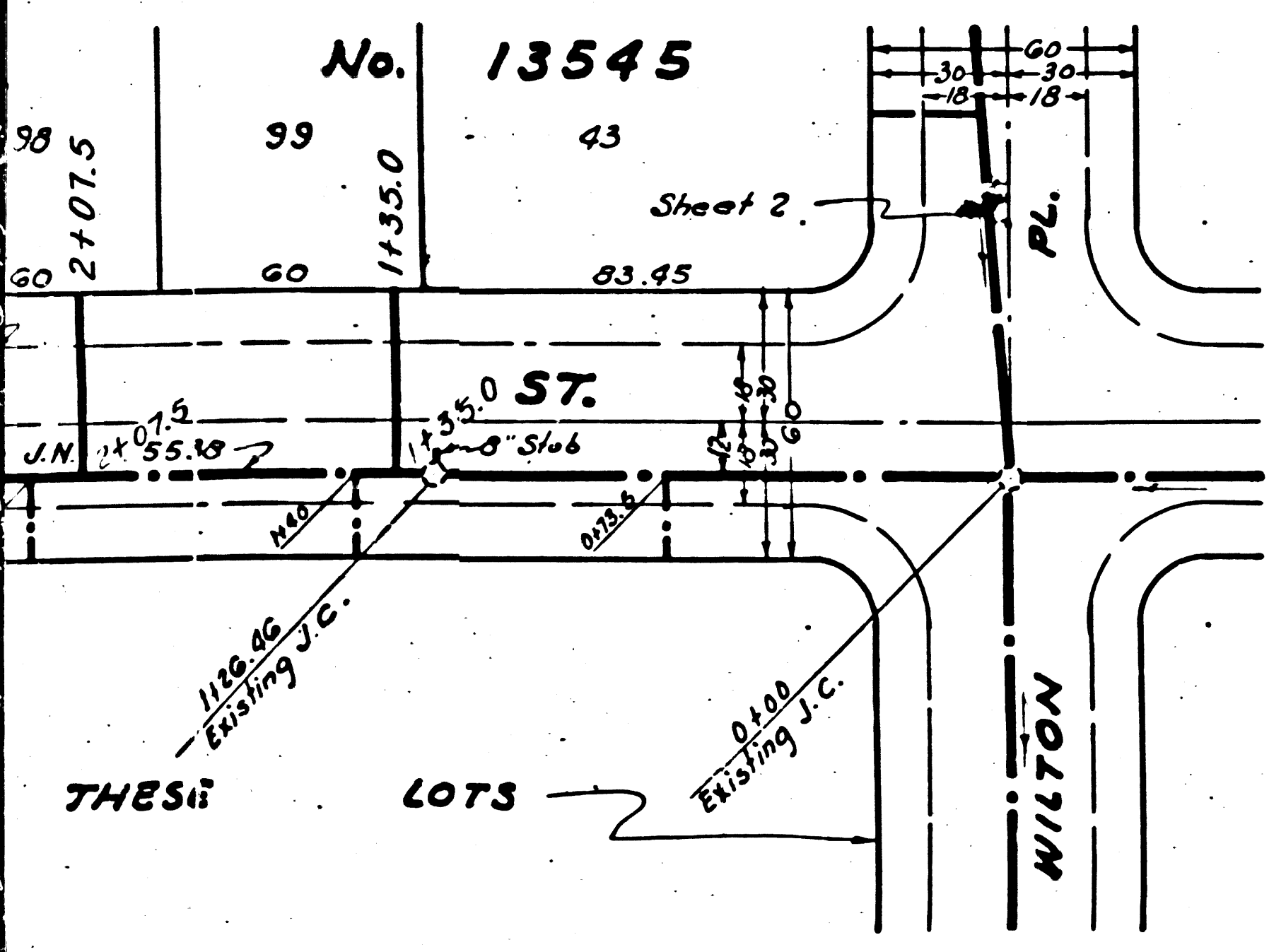
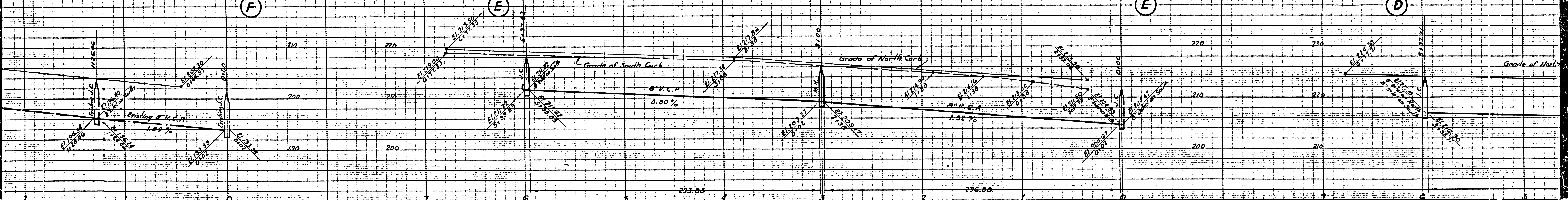
Note: This is a revised layout and Supersedes all former Plans.

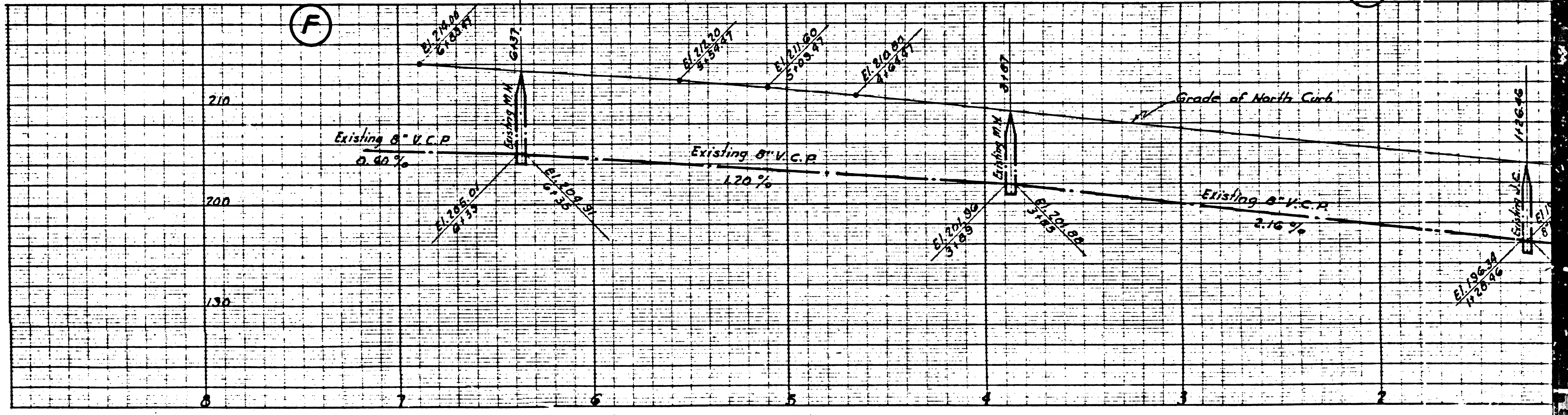
Final ...



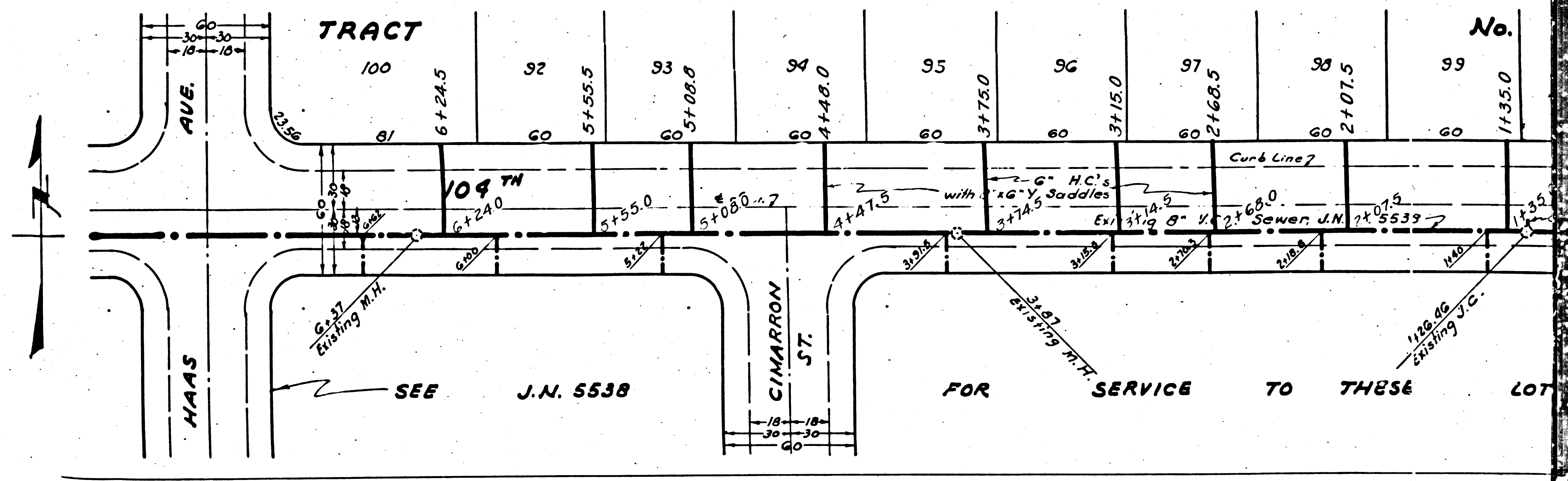
7273

7272



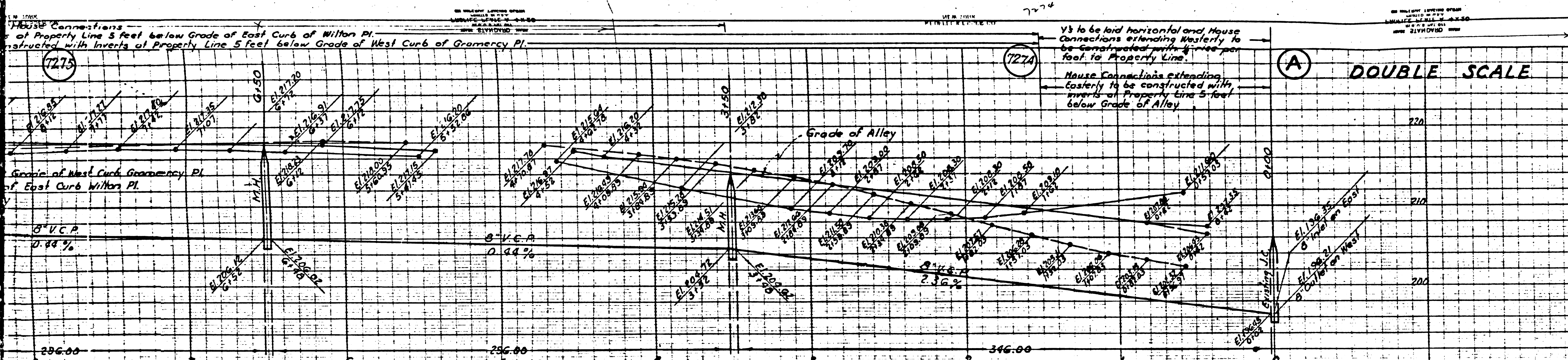


P.C. 401
 20



SEE J.N. 5538

FOR SERVICE TO THESE LOT



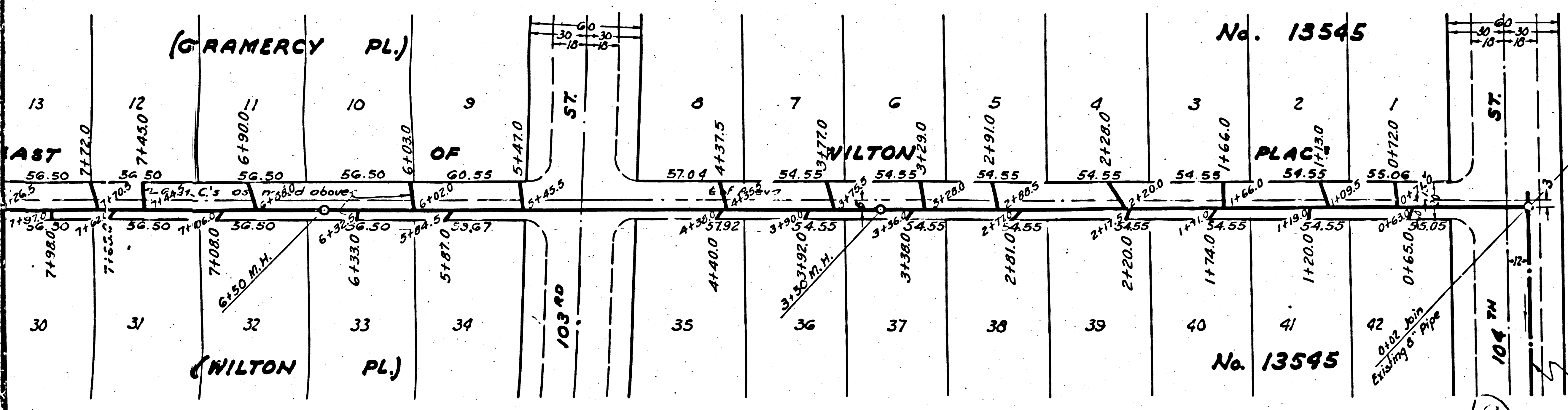
PROFILE, ALIGNMENT AND GRADE OF
SANITARY SEWERS
 TO BE CONSTRUCTED IN
FIRST ALLEY EAST OF WILTON PLACE
 BETWEEN 104TH ST. & CENTURY BLVD.
WILTON PLACE
FIRST ALLEY WEST OF HAAS AVENUE
 BETWEEN 104TH ST. & 102ND ST.
CENTURY BOULEVARD
 BETWEEN WILTON PL. & ARLINGTON AVE.
 PRIVATE CONTRACT No. 401
 W.S. 26
 SHEET 2 OF 2 SHEETS

PREPARED IN THE OFFICES OF
SEABOARD ENGINEERING CO.
 JULY 1947

BY *Mark A. Robin*
 REG. C. E. NO.

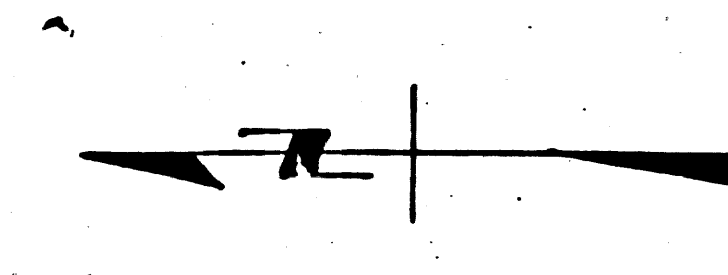
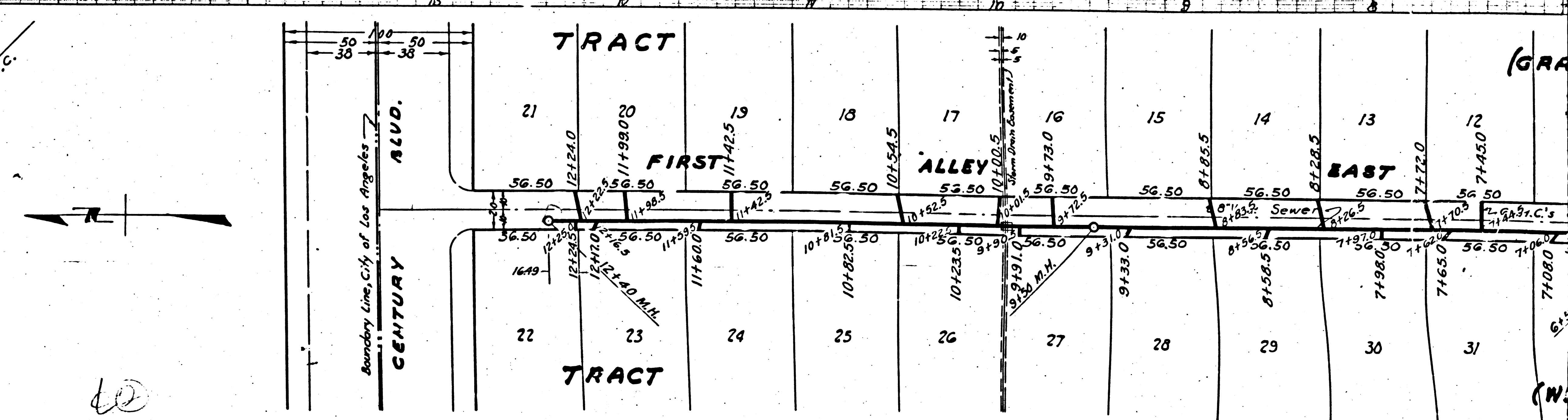
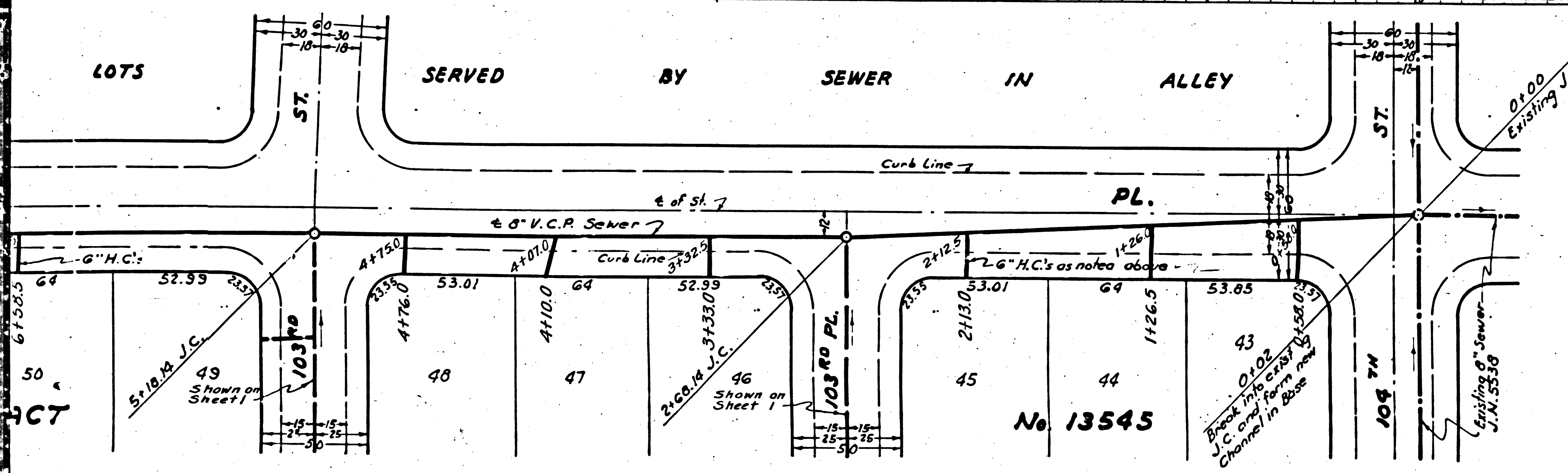
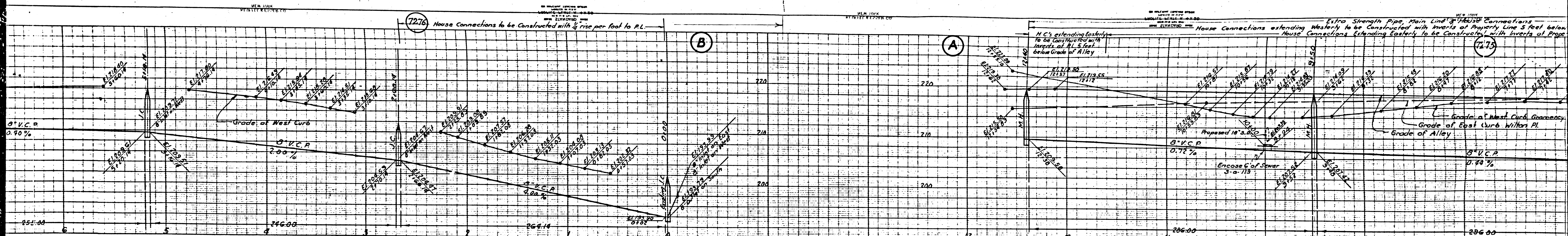
FOR LEGEND
 SEE PLAN No. S-10-04

FOR CONSTRUCTION NOTES SEE SHEET No. 1



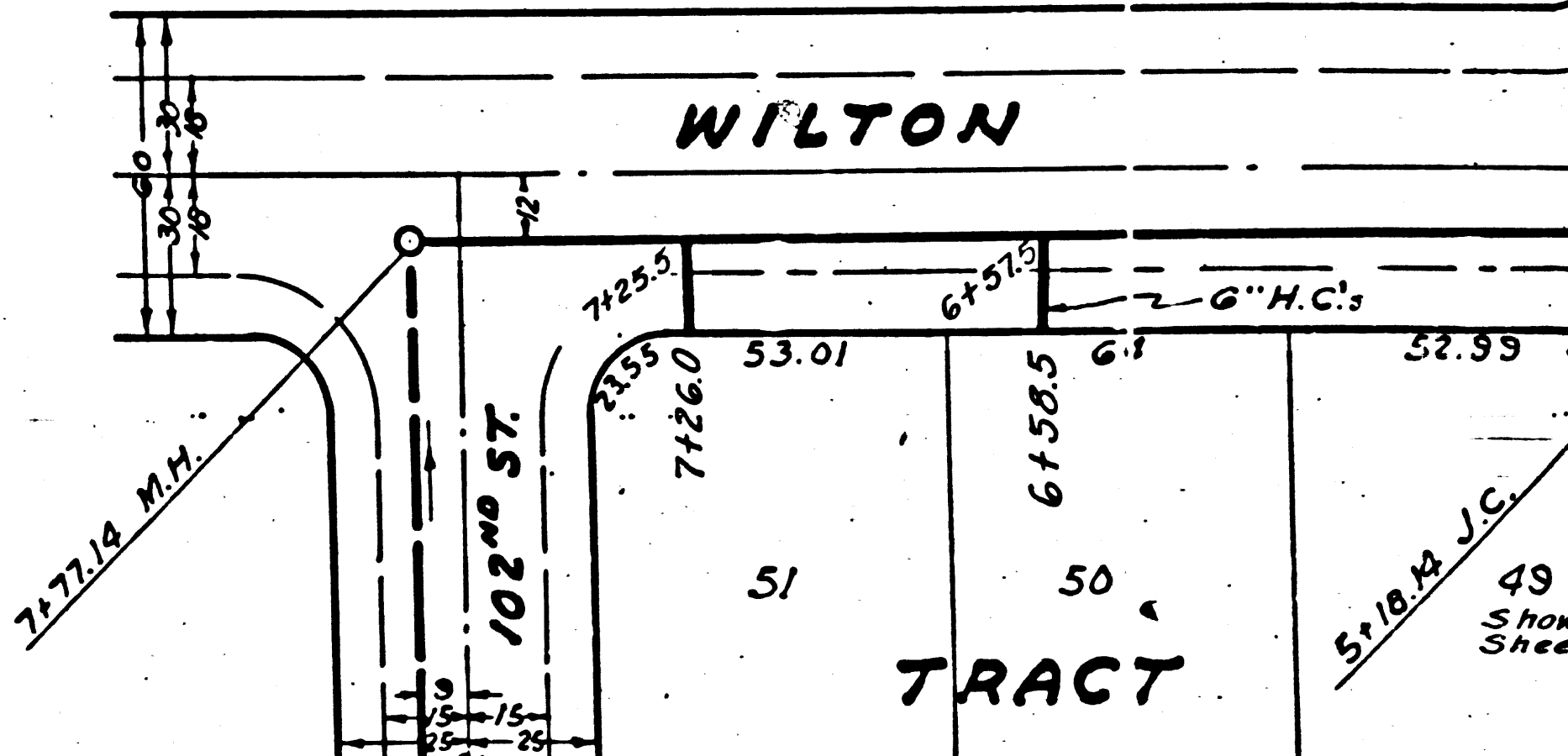
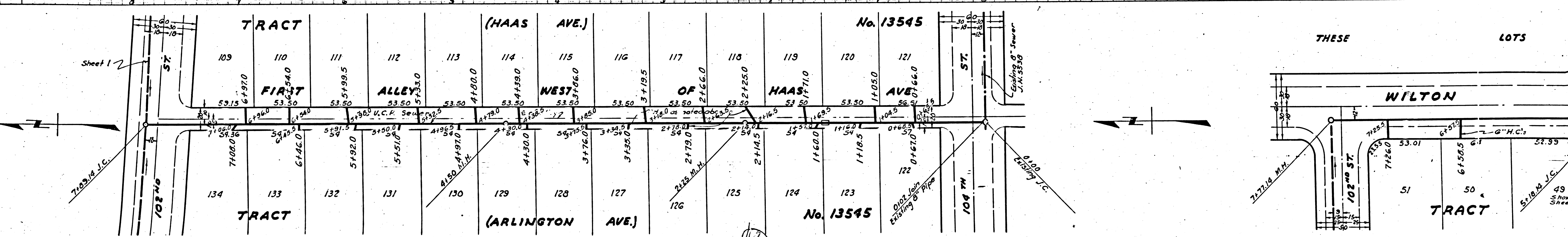
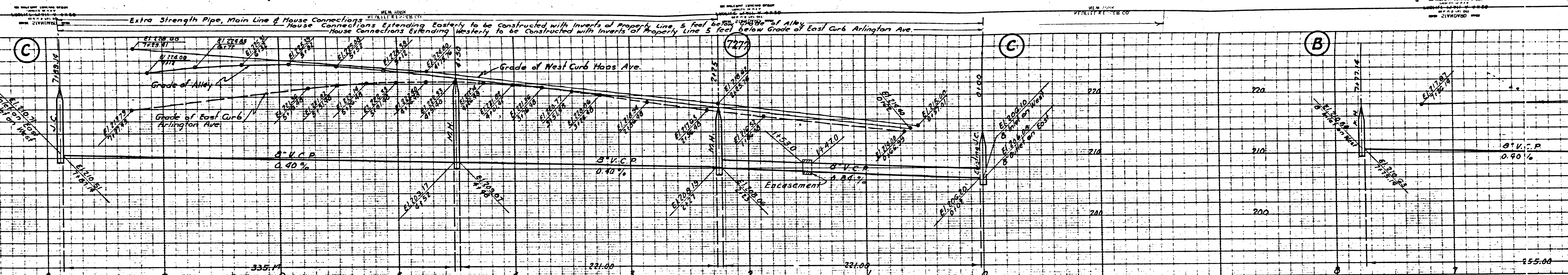
COUNTY OF LOS ANGELES, CALIFORNIA
 APPROVED *Alfred Jones*
 COUNTY ENGINEER
 APPROVED *Edwards*
 CHIEF ENGINEER OF COUNTY
 SANITATION DISTRICT No. 4
 CHECKED *John B. King* July 30, 1947
 OFFICE OF COUNTY ENGINEER, REG. C. E. No. 6622

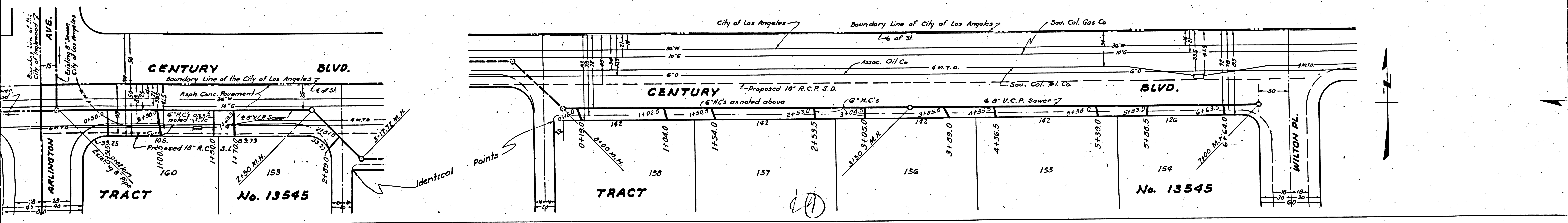
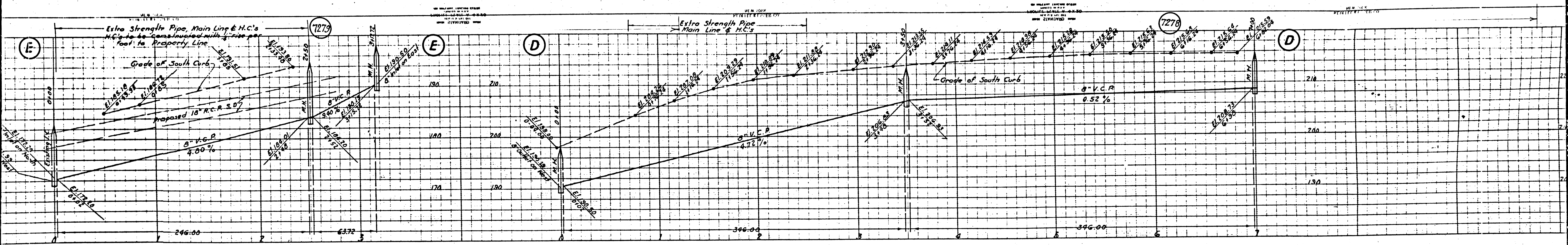
Final Ck 7.17.47

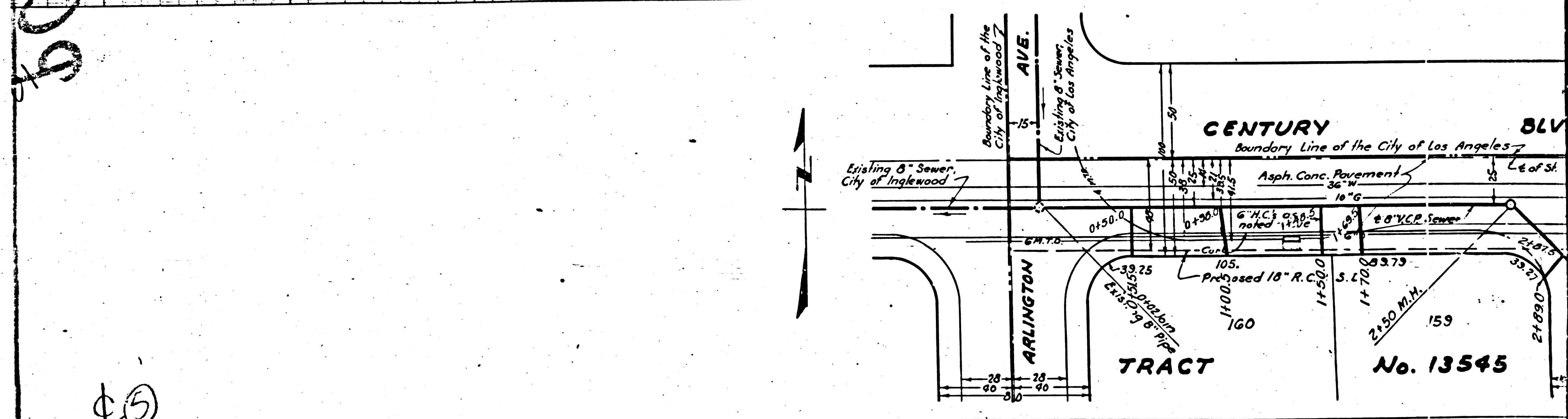
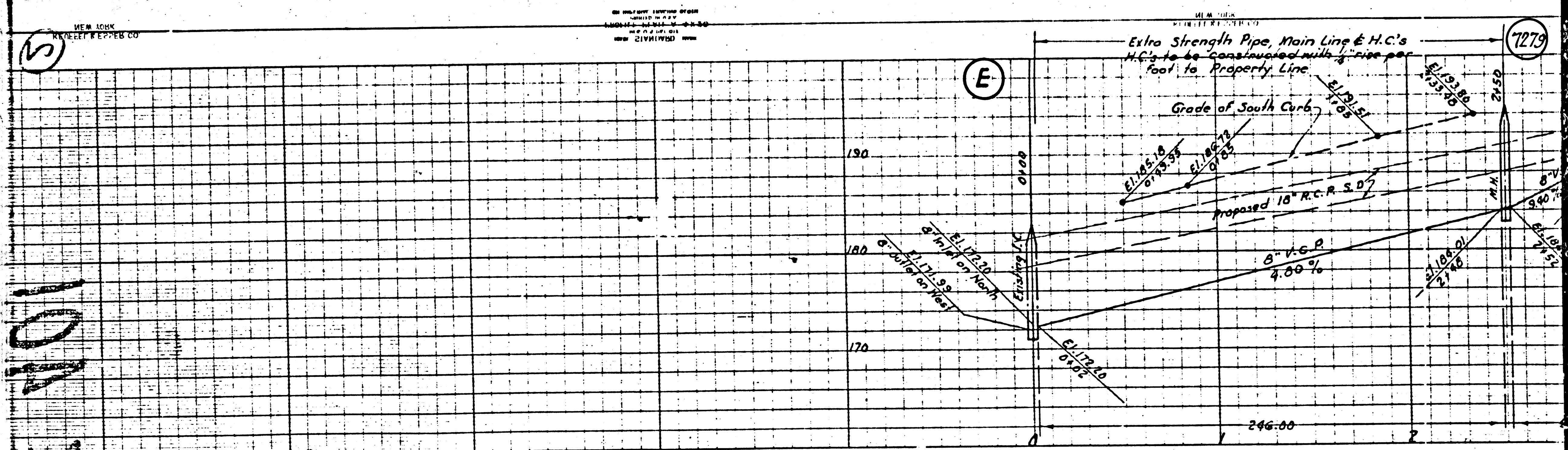


No 13545

60







bc 101

⑤