

1. Use Standard Manhole Frames and Covers, S-2-117.
2. Use Standard Strength Pipe.
3. Use Cement Mortar for all Vitrified Clay Pipe Joints.
4. Use Cement Mortar for all Vitrified Clay Pipe Joints.
5. Resurface all Trench within Paved Area to meet L.A. County Road Dept. requirements.
6. Encase four feet of Sewer at points of interference with Poles as per S-3-10.
7. All Structures shall be Brick Sewer Structures, S-3-104.
8. Construct Tops of all structures in rights-of-way, 6" above finished grade.

NOTE: No representative of the County Engineer will survey or lay out any portion of the work. The owner or his authorized representative shall furnish the County Engineer with Grade Sheets and Stationing for all House Connections and all Structures and shall locate stakes for them at their proper locations with stationing plainly marked. Any change of locations shall be requested in writing by the owner or his representative. No revisions shall be made in these Plans without approval of the County Engineer.

PROFILE, ALIGNMENT AND GRADE OF
SANITARY SEWERS
 TO BE CONSTRUCTED IN
SANITARY SEWER RIGHT-OF-WAY
 IN SECTIONS 16 & 17, T. 3 S., R. 13 W.

PRIVATE CONTRACT NO. 417
 N.S. 26
 SHEET 1 OF 1 SHEET

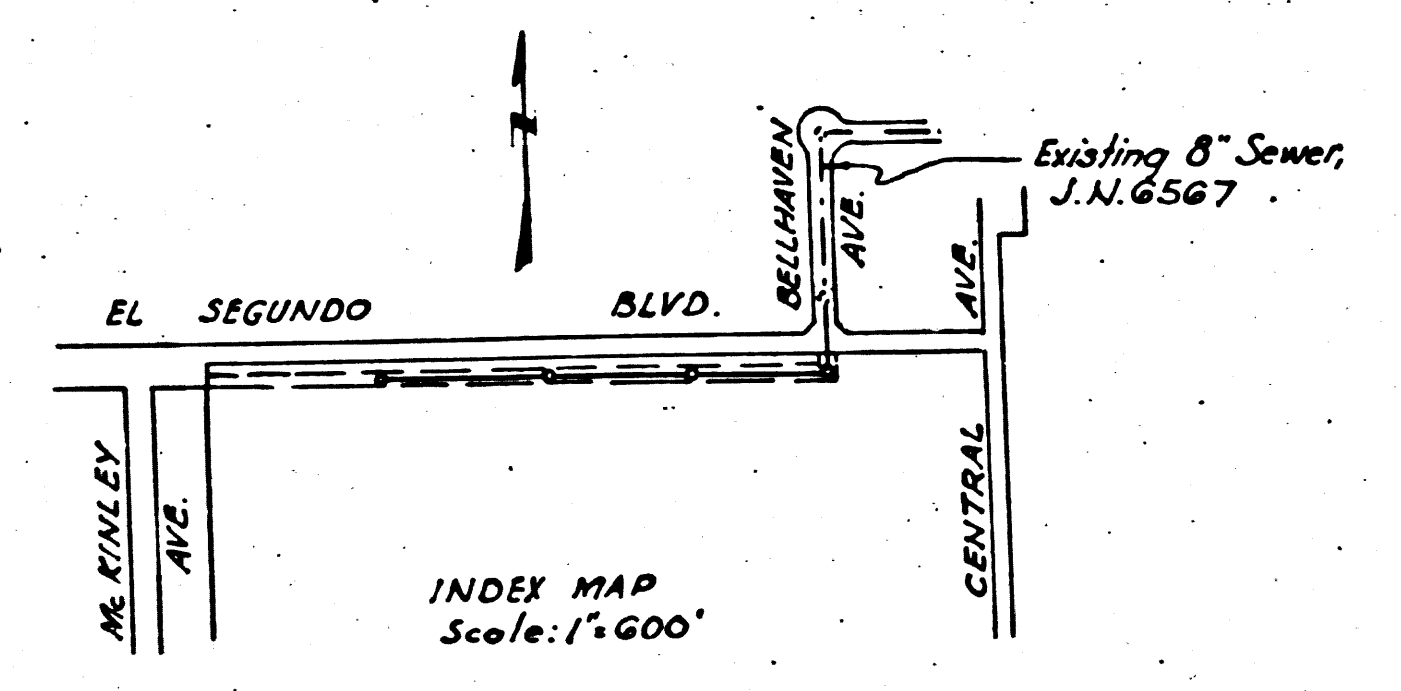
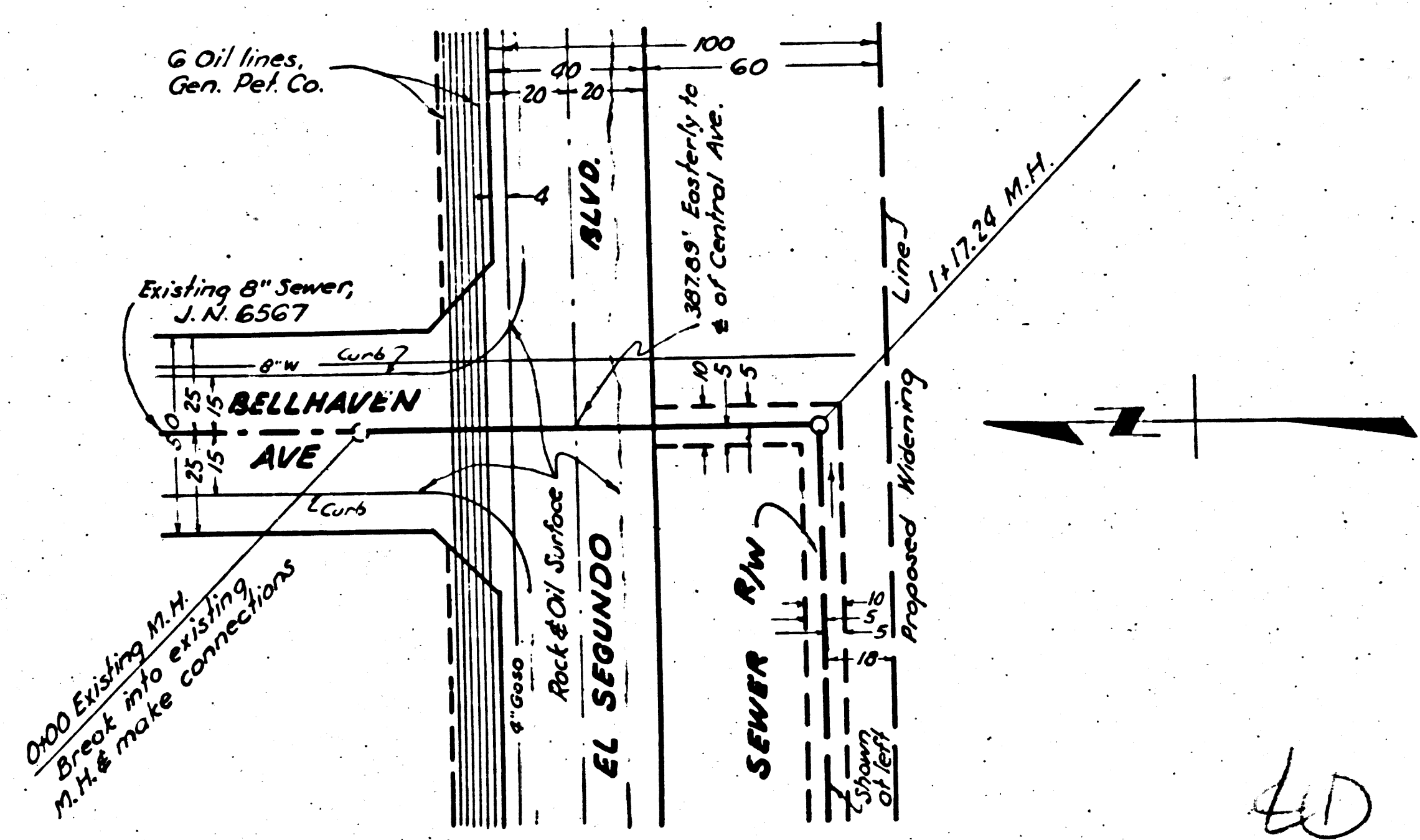
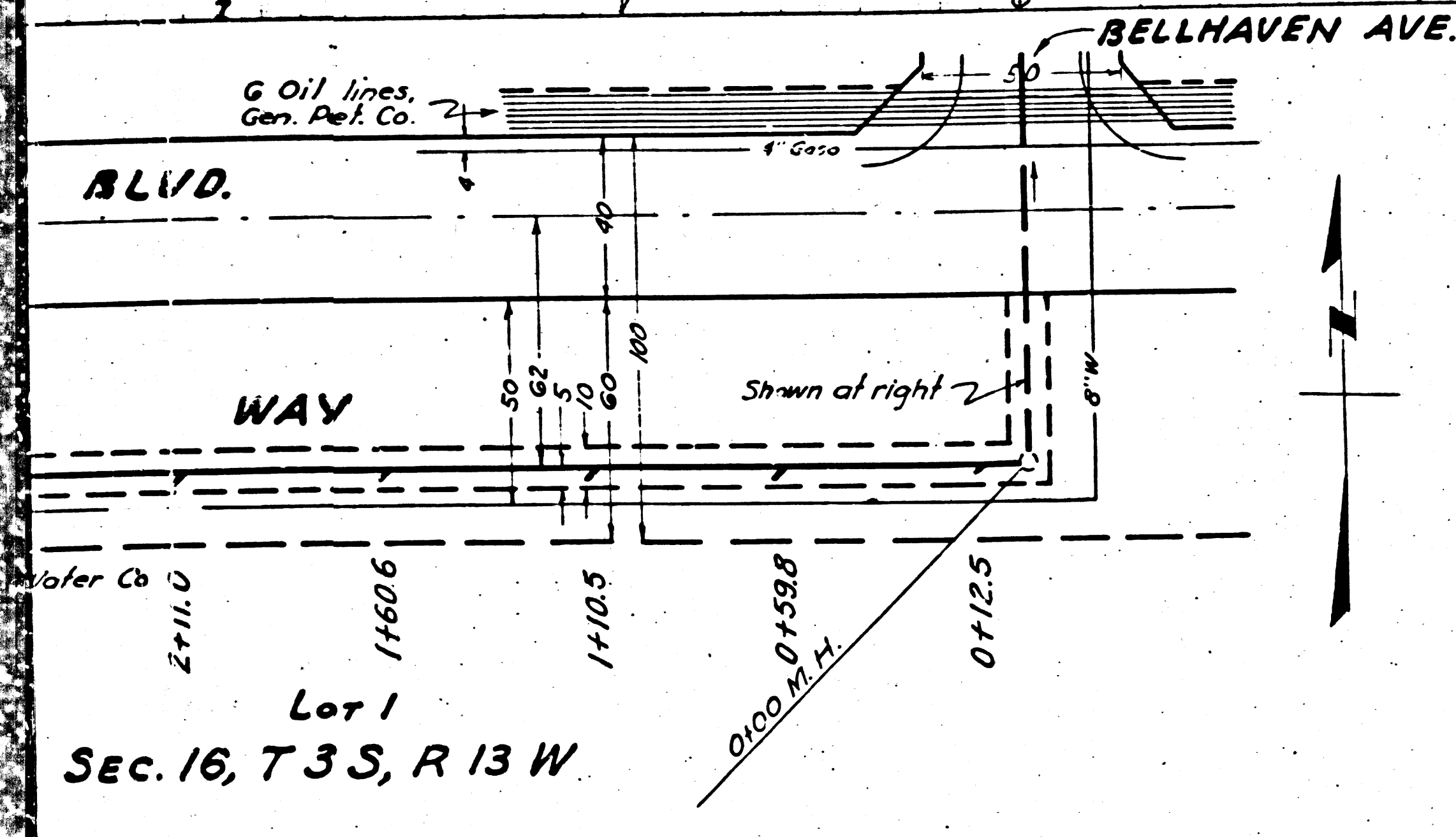
Scale: Vert. 1"=4'
 Horiz. 1"=40' AUG. 1946

PREPARED IN THE OFFICES OF
JONES & GILBERT

BY *Hans Gilbert*
 Reg. C.E. No. 1797

FOR LEGEND
 See Plan No. S-4-G4

NOTE: Grades to which this improvement is to be constructed are shown on Plans and Profiles. Grade points for top of curb, center line of streets, or center line of alley, are shown by circles on Profiles. At all points between designated points the grade shall be established so as to conform to a straight line drawn between said designated points. Elevations are in feet above U.S.G.S. Datum or Mean Sea Level. This drawing and the data hereon are hereby made a part of the specifications. Work shall be constructed according to specifications on file in the office of the County Engineer and shall be prosecuted only in the presence of the County Engineer. Before work can be started, the Contractor must obtain a permit to excavate in County streets from the L.A. County Road Dept. 1004 Hall of Records, and make a deposit with the County Engineer 700 Fashion League Building, sufficient to cover the cost of Construction Inspection and Record Plans.



COUNTY OF LOS ANGELES, CALIFORNIA

APPROVED *Alfred Jones*
 County Engineer

APPROVED *Arthur Jones*
 Chief Engineer of County Sanitation District No. 1

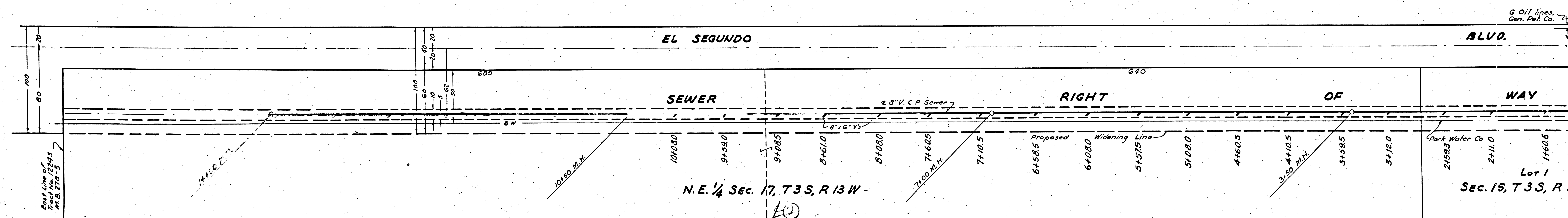
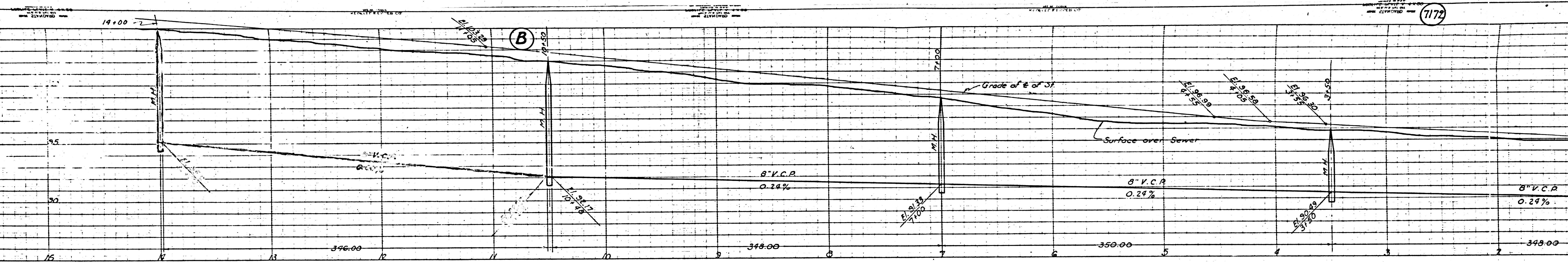
CHECKED *Arthur Jones* 12/12/46
 Office of County Engineer, Reg. C.E. No. 6330

BC 417

LD

Final CK T.P. 9/12/48

1172



N.E. 1/4 Sec. 17, T3S, R13W

Lot 1 Sec. 15, T3S, R13W

East Line of M.B. 270-5

G Oil lines Gen. Ref. Co.