

1. Use Standard Manhole Frames and Covers, S-a-117
2. Use Standard Strength Pipe except as noted.
3. Use Cement Mortar for all Vitrified Clay Pipe Joints.
4. Resurface all Trench within Paved area to meet L.A. County Road Dept. requirements.
5. Encase 9" of Sewer at points of interference with Poles as per S-a-6
6. All Structures shall be Brick Sewer Structures, S-a-104
7. Construct house Connections with invert of Property Line 5 feet below curb grade, except as noted.

DOUBLE SCALE

NOTE:
 No representative of the County Engineer will survey or lay out any portion of the work.
 The owner or his authorized representative shall furnish the County Engineer with Grade Sheets and Stationing for all House Connections and Y Branches and shall provide stakes for them at their proper locations with stationing plainly marked. Any change of location shall be requested in writing by the owner or his representative.
 No revisions shall be made in these Plans without approval of the County Engineer.

**PROFILE, ALIGNMENT, AND GRADE OF
 SANITARY SEWERS
 TO BE CONSTRUCTED IN
 CIMARRON STREET
 WILTON PLACE
 BETWEEN 112TH ST. & LOHENGRIK ST.
 112TH STREET
 LOHENGRIK STREET
 BETWEEN EASTERLY LINE OF TRACT NO. 13795 & VAN NESS AVE.
 VAN NESS AVENUE
 BETWEEN IMPERIAL HWY. & 112TH ST.**

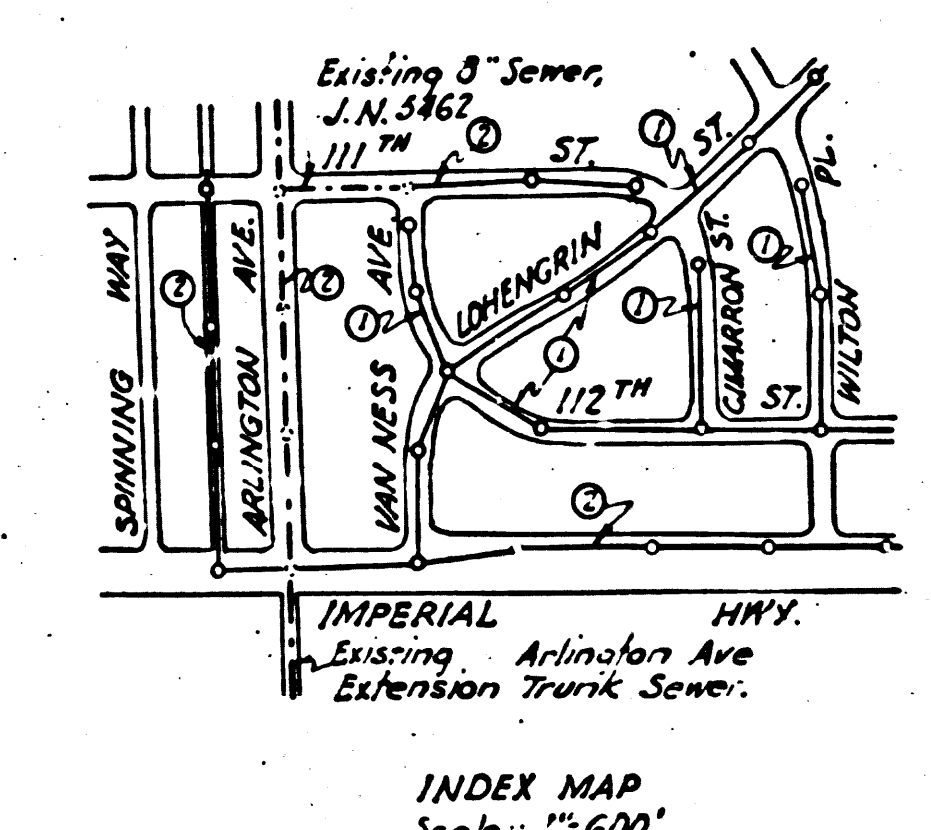
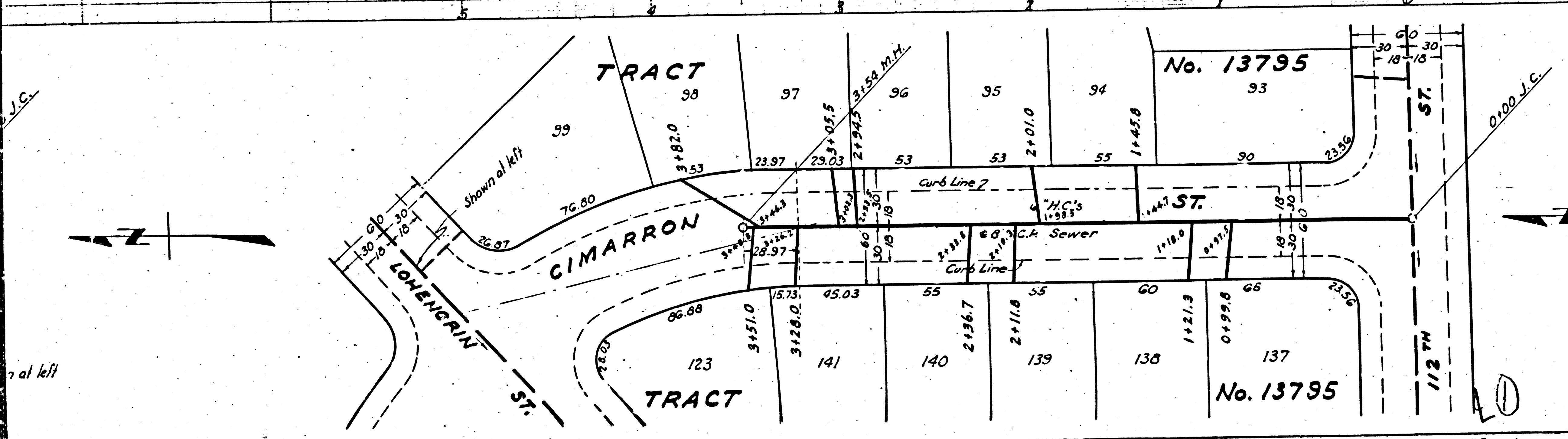
**PRIVATE CONTRACT No. 426
 W.S. 26
 SHEET 1 OF 2 SHEETS**

Scale: Vert. 1"=8'
 Horiz. 1"=40'

PREPARED IN THE OFFICES OF
SEABOARD ENGINEERING CO.
 by *Mark A. Brown*
 Reg. C.E. No. 2053

FOR LEGEND
 See Plan No. S-a-64

NOTE:
 Grades to which this improvement is to be constructed are shown on Plan and Profiles.
 Grade points for top of curb, center line of streets, or center line of alley are shown by circles on Profiles. At all points between designated points the grade shall be established so as to conform to a straight line drawn between said designated points.
 Elevations are in feet above U.S.C.S. Datum or Mean Sea Level.
 This drawing and the data hereon are hereby made a part of the specifications.
 Before work can be started, the Contractor must obtain a permit to excavate in County streets, from the L.A. County Road Dept. 1104 Hall of Records and make a deposit with the County Engineer 700 Fashion League Building sufficient to cover the cost of Construction Inspection and Record Plans.



INDEX MAP
 Scale: 1"=600'

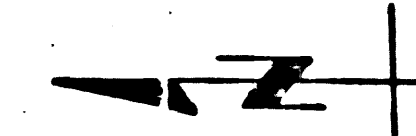
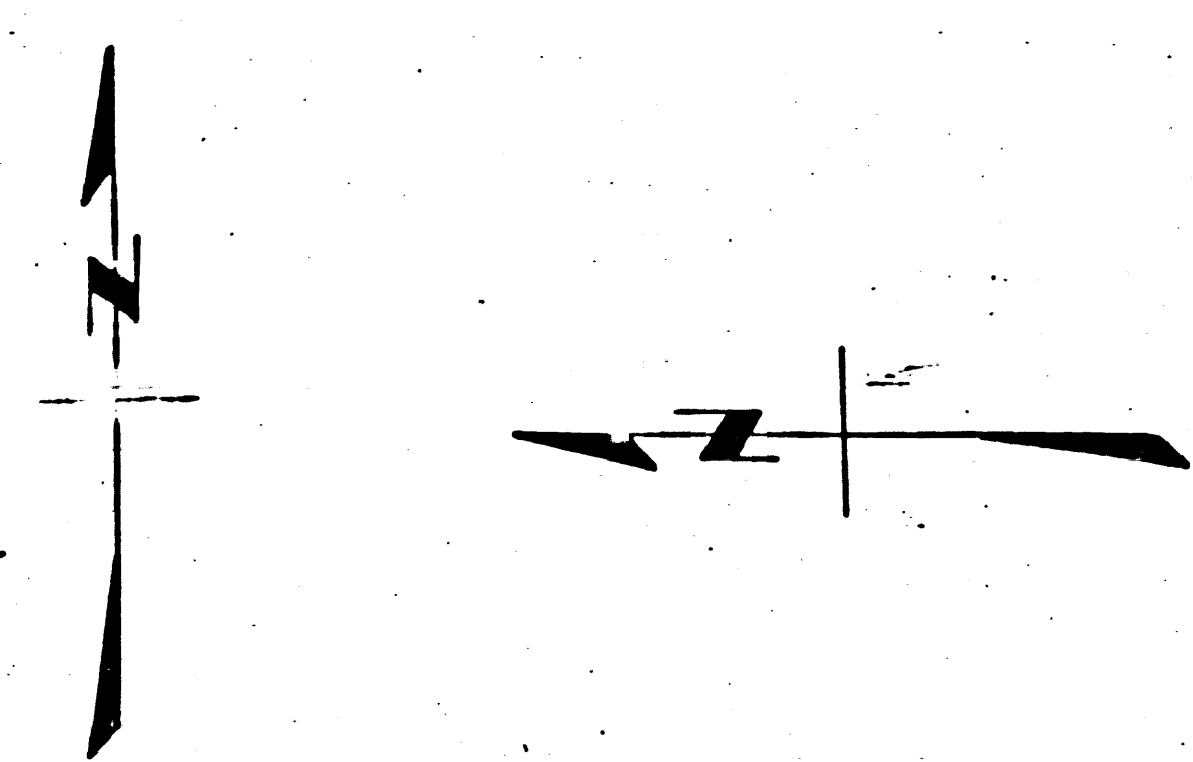
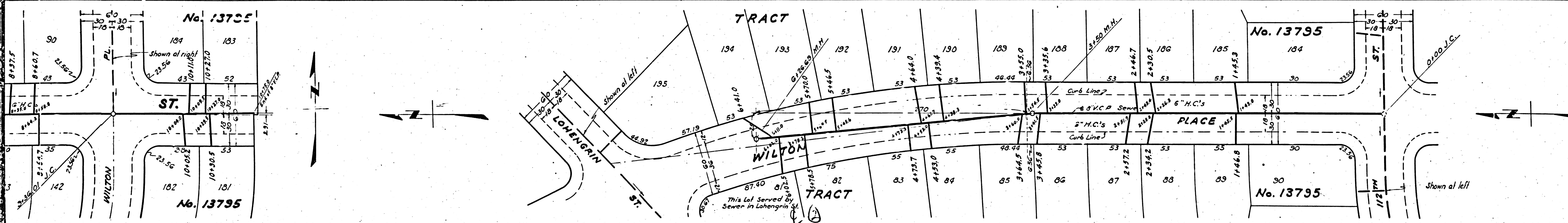
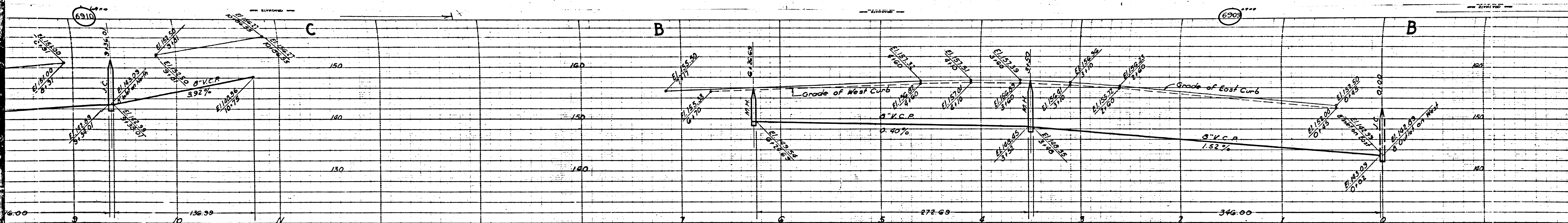
COUNTY OF LOS ANGELES, CALIFORNIA

APPROVED *Alfred Jones*
 Chief Engineer

APPROVED *[Signature]*
 Chief Engineer of County Sanitation District No. 3

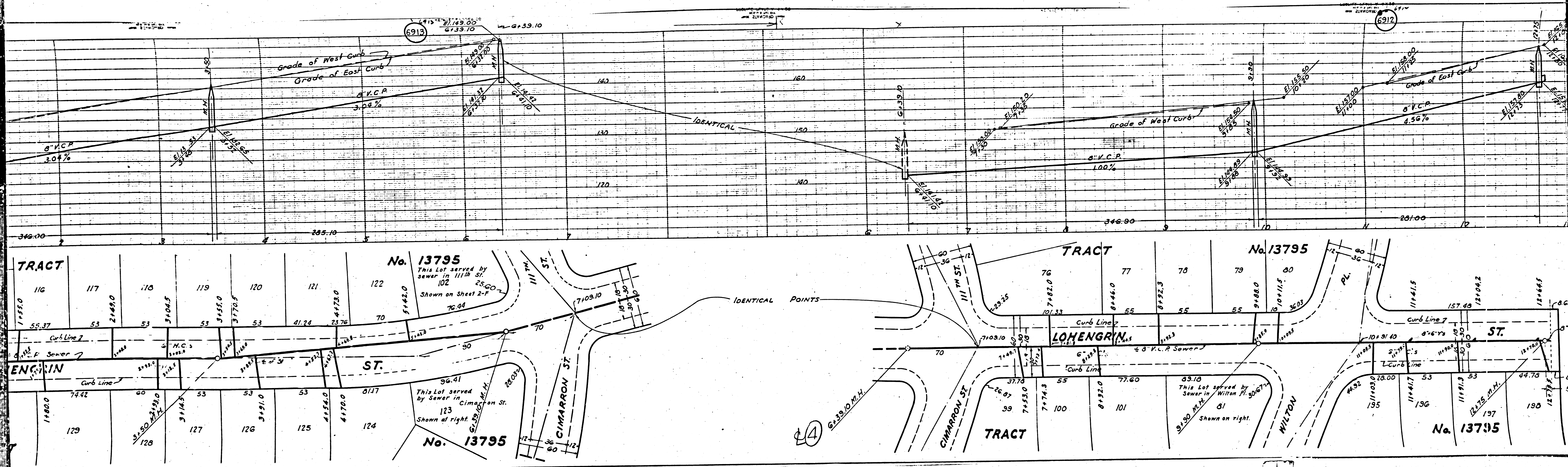
CHECKED *Autumn* 7/20/36
 Office of County Engineer, Reg. C.E. No. 6

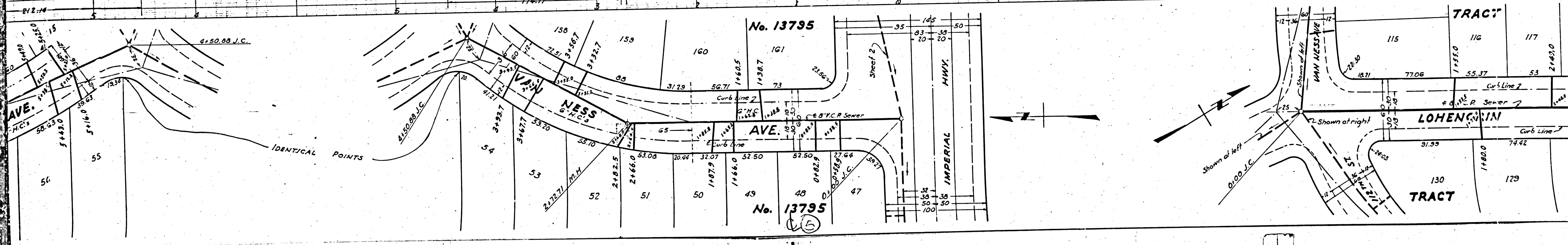
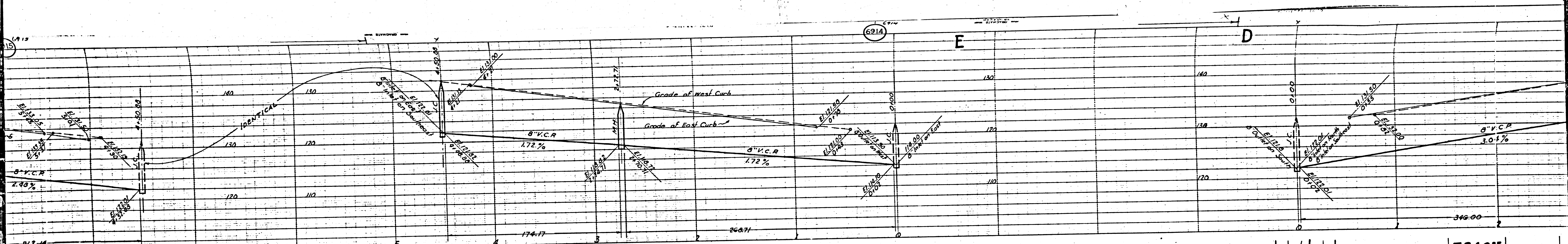
Final C.E. T.I.P. 4/14/47



M-1

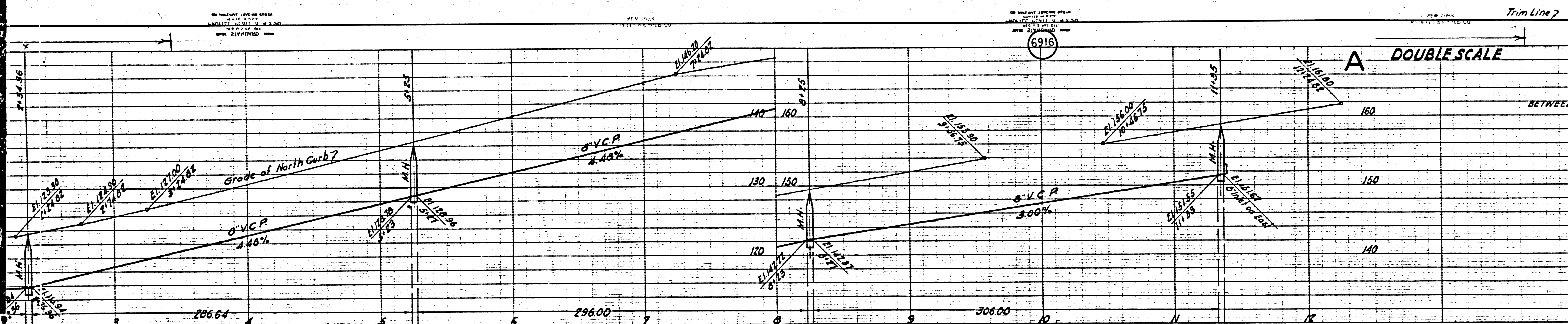
M-6





M5

M6

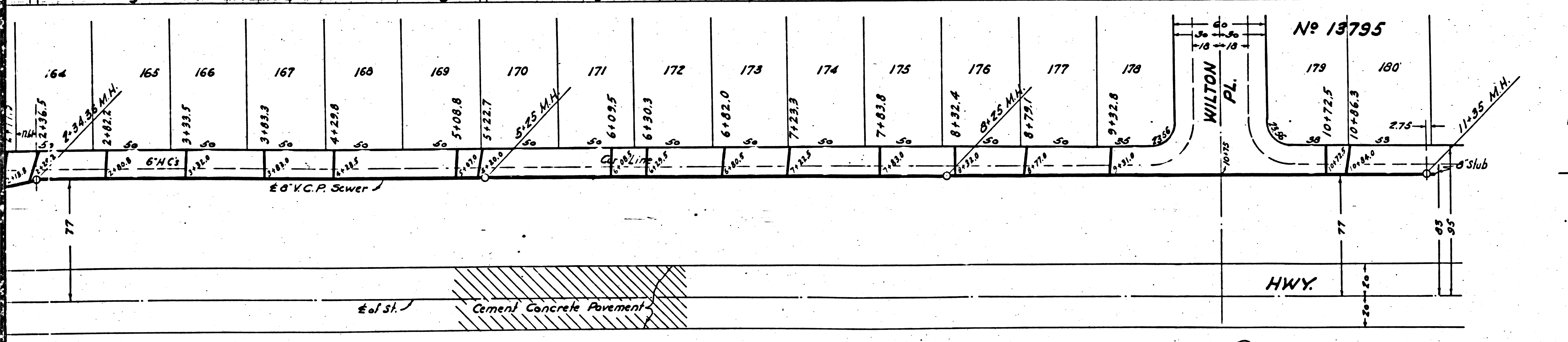


DOUBLE SCALE

PROFILE, ALIGNMENT, AND GRADE OF
SANITARY SEWERS
 TO BE CONSTRUCTED IN
IMPERIAL HIGHWAY
 BETWEEN EASTERLY LINE OF TRACT NO. 13795 & FIRST ALLEY WEST OF ARLINGTON AVE.
FIRST ALLEY WEST OF ARLINGTON AVENUE
 ARLINGTON AVENUE
 BETWEEN IMPERIAL HWY. & 111TH ST.
111TH STREET
 BETWEEN LOHENGRIN ST. & ARLINGTON AVE.

PRIVATE CONTRACT No. 426
 W.S. 26
SHEET 2 OF 2 SHEETS
 Scale: Vert. 1"=10'
 Horiz. 1"=40'
 SEPT. 1946

PREPARED IN THE OFFICES OF
SEABOARD ENGINEERING CO.
 BY *Mark A. Robie*
 Reg. C.E. No. 2053
 FOR LEGEND
 See Plan No. S-0-68



FOR CONSTRUCTION NOTES, SEE SHEET 1.

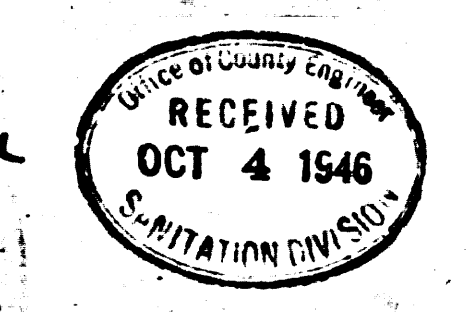
COUNTY OF LOS ANGELES, CALIFORNIA

APPROVED *Alfred Jones*
 County Engineer

APPROVED *[Signature]*
 Chief Engineer of County
 Sanitation District No. 5

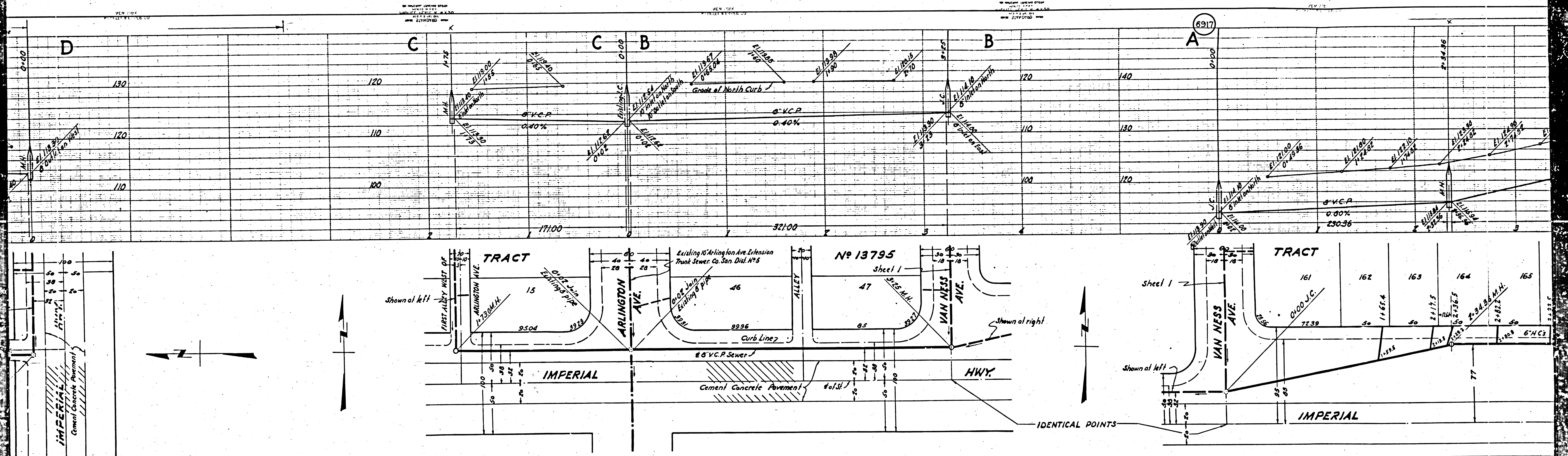
CHECKED *[Signature]* 7/20/1946
 Office of County Engineer, Reg. C.E. No. 6330

Final Ck. T.P. 4/14/47
 Trim Line

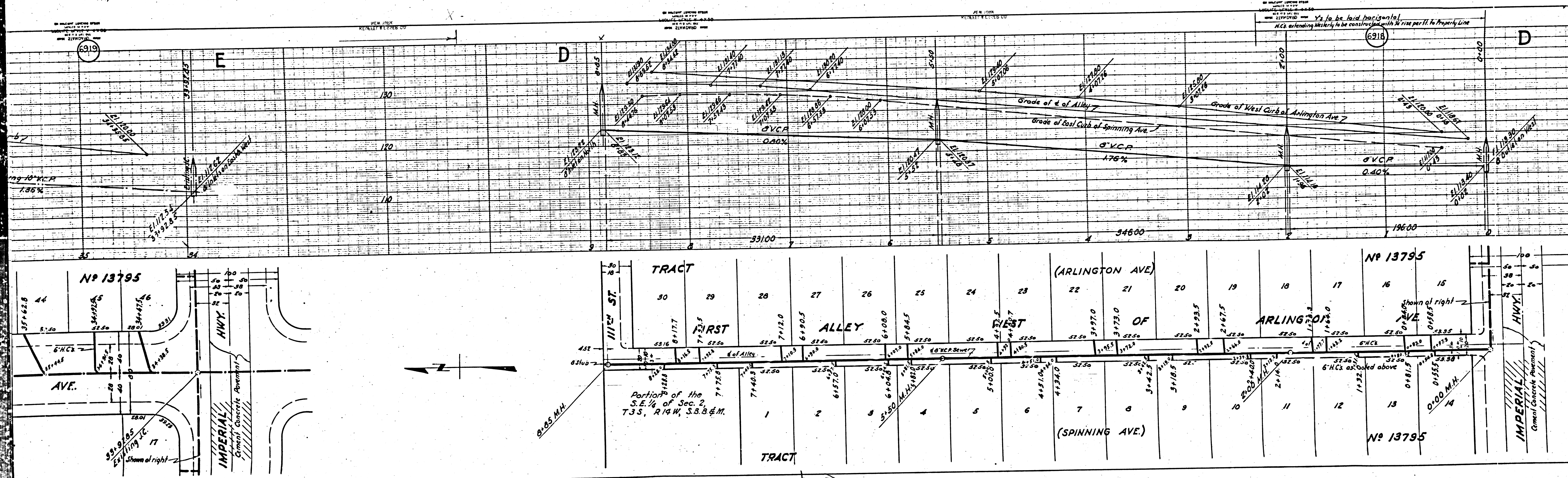


Handwritten notes: 'pic 2/26' and '2/26'.

Handwritten note: 'E.D.'



②

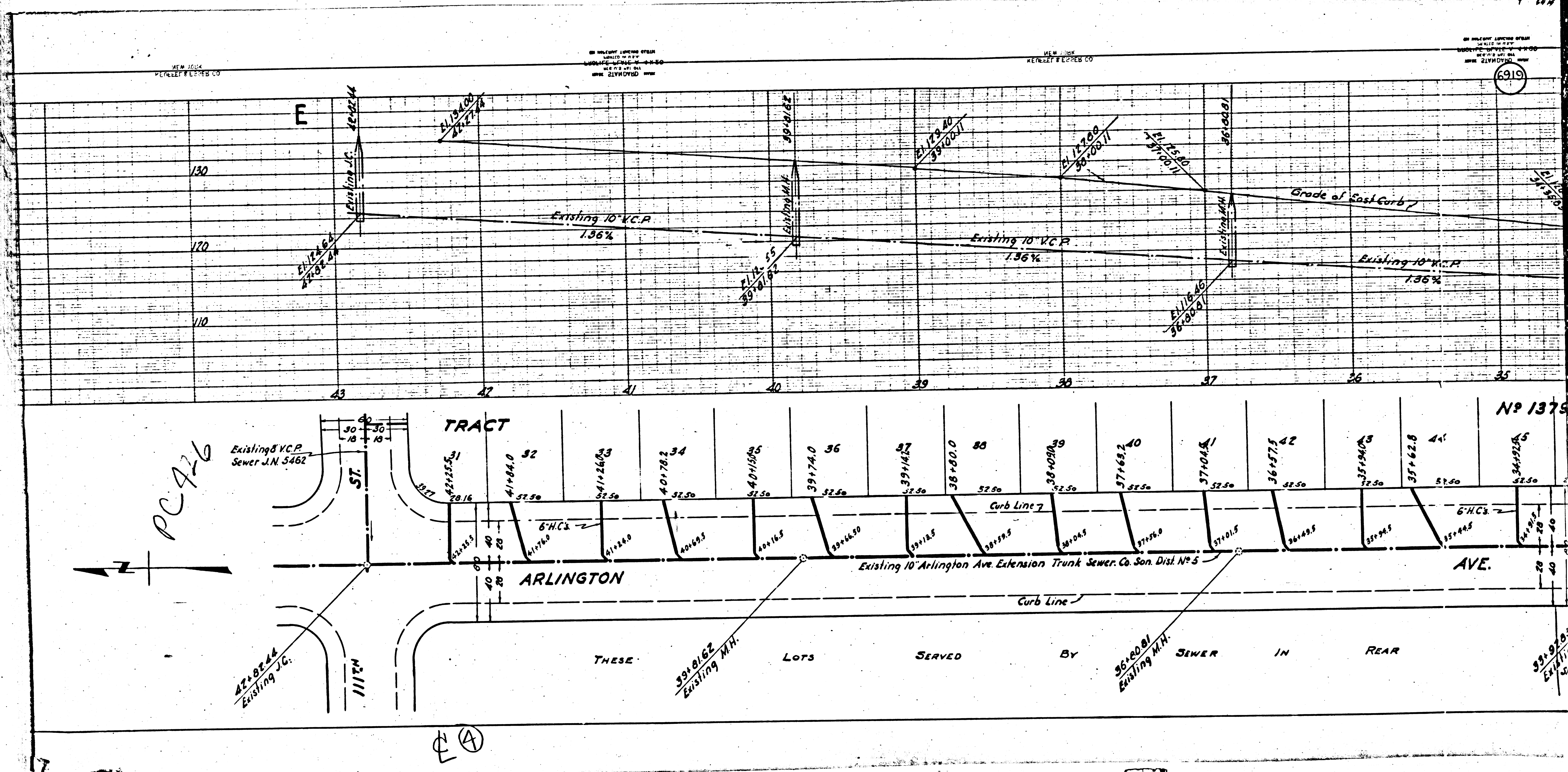


6919

6918

③

M5



NEW YORK
MULLER & PETERSON CO.

NEW YORK
MULLER & PETERSON CO.

NEW YORK
MULLER & PETERSON CO.

NEW YORK
MULLER & PETERSON CO.

6919

PC 476

TRACT

Nº 1375

Existing 8" V.C.P.
Sewer J.N. 5462

42+82.44
Existing J.G.

39+01.62
Existing M.H.

36+00.81
Existing M.H.

35+99.9
Existing

ARLINGTON

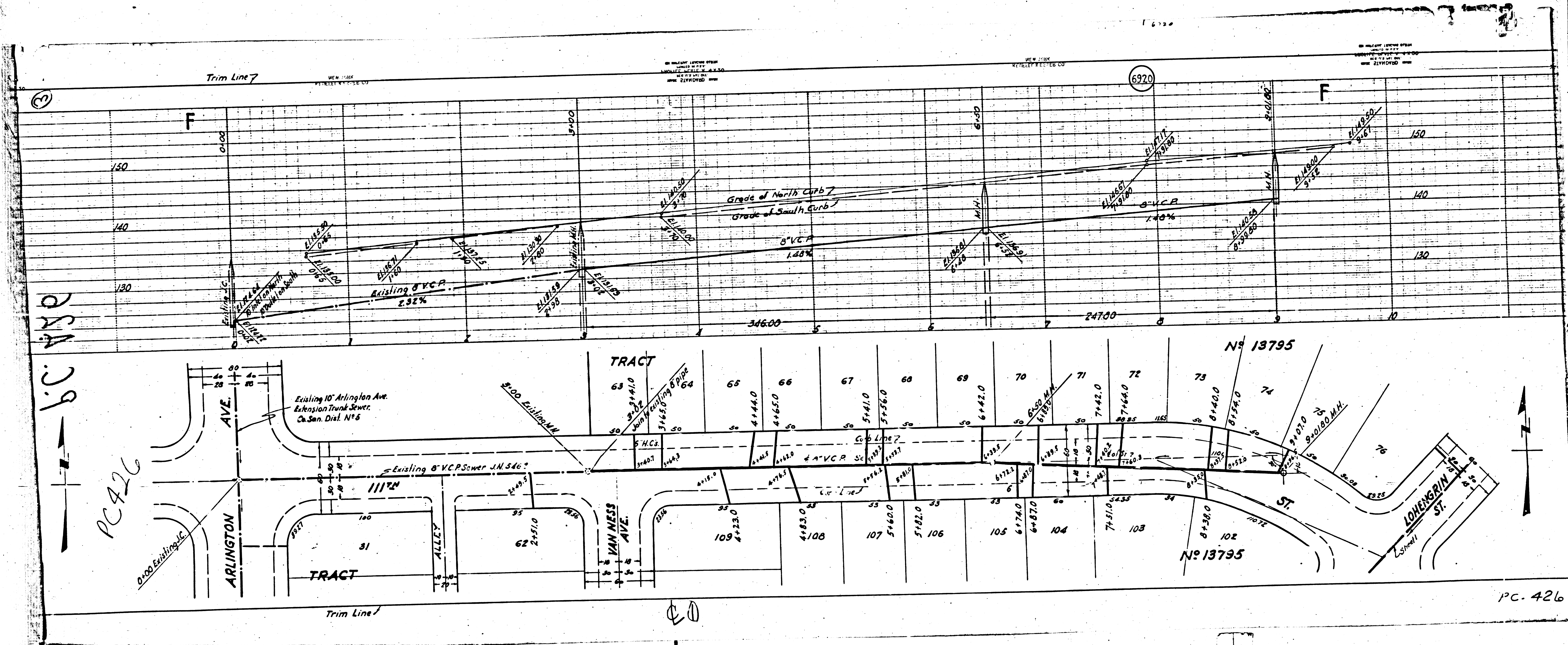
Existing 10" Arlington Ave. Extension Trunk Sewer Co. Son. Dist. Nº 5

AVE.

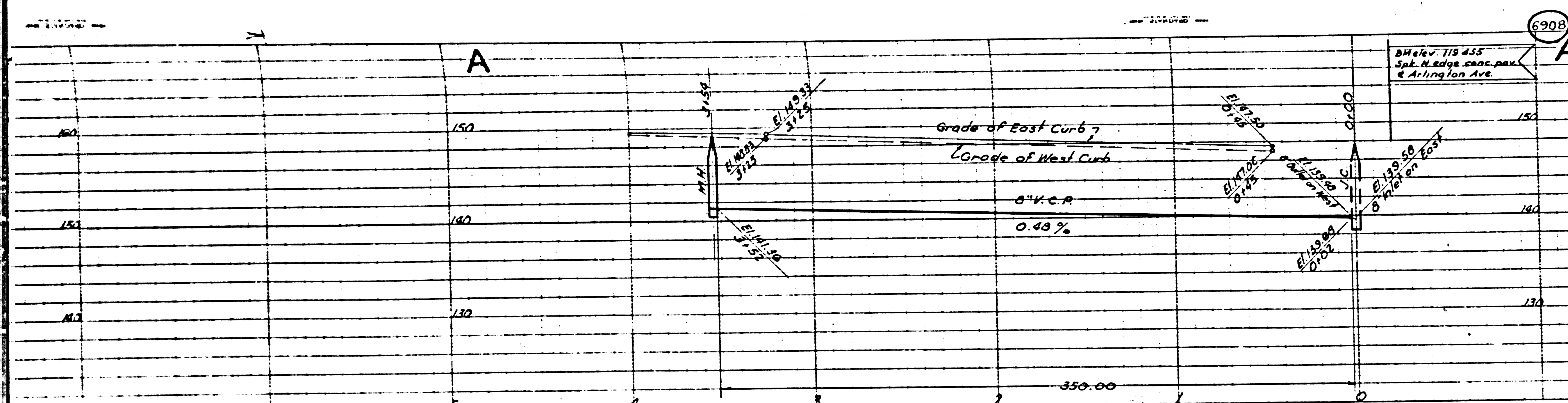
THESE LOTS SERVED BY SEWER IN REAR

Ⓢ

MS



PC 426
 b.c. 430
 →



1. Use Standard Manhole Frames and Covers, S-8-117
2. Use Standard Strength Pipe, except as noted.
3. Use Cement Mortar for all Vitrified-Clay Pipe Joints.
4. Resurface all Trench within Paved area to meet L.A. County Road Dept. requirements.
5. Encase 4' of Sewer at points of interference with Poles as per S-a-6
6. All Structures shall be Brick Sewer Structures, S-a-104
7. Construct house Connections with invert at Properly Line 5 feet below curb grade, except as noted.

DOUBLE SCALE

NOTE:
 No representative of the County Engineer will survey or lay out any portion of the work. The owner or his authorized representative shall furnish the County Engineer with Grade Sheets and Station for all House Connections and Y Branches and shall provide stakes for them at their proper locations with staking plainly marked. Any change of location shall be requested in writing by the owner or his representative.
 No revisions shall be made in these Plans without approval of the County Engineer.

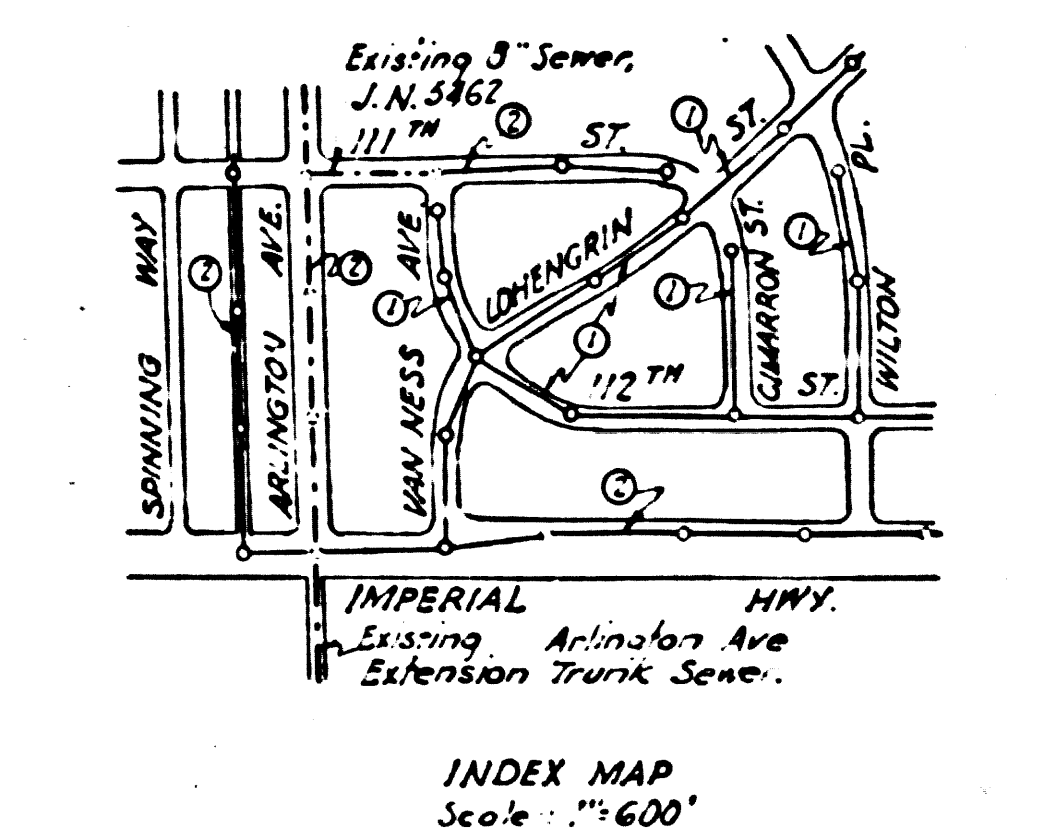
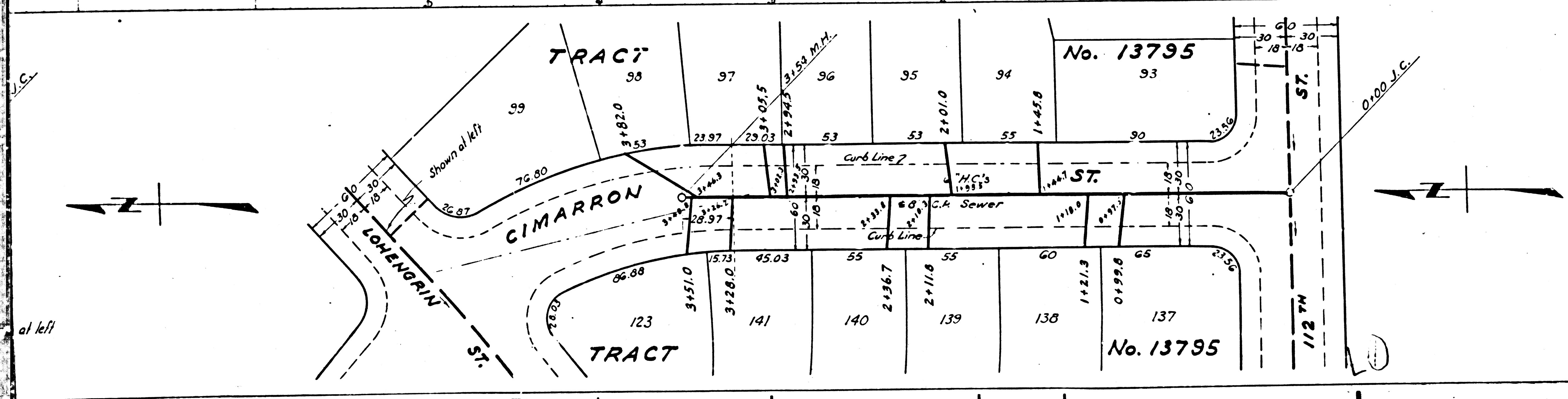
PROFILE, ALIGNMENT, AND GRADE OF
SANITARY SEWERS
 TO BE CONSTRUCTED IN
CIMARRON STREET
WILTON PLACE
 BETWEEN 112TH ST. & LOHENGRIN ST.
112TH STREET
LOHENGRIN STREET
 BETWEEN EASTERLY LINE OF TRACT NO. 13795 & VAN NESS AVE.
VAN NESS AVENUE
 BETWEEN IMPERIAL HWY. & 111TH ST.

PRIVATE CONTRACT No. 426
 W.S. 26
SHEET 1 OF 2 SHEETS
 Scale: Vert. 1"=8'
 Horiz. 1"=40'
 SEPT. 1946

PREPARED IN THE OFFICES OF
SEABOARD ENGINEERING CO.
 by *Walter H. Johnson*
 Reg. C.E. No. 2323

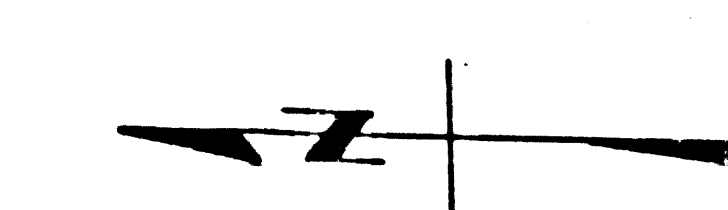
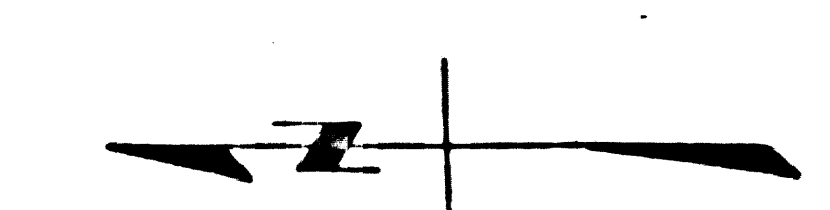
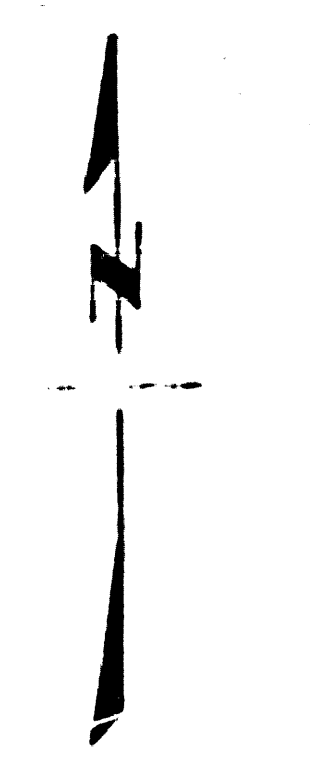
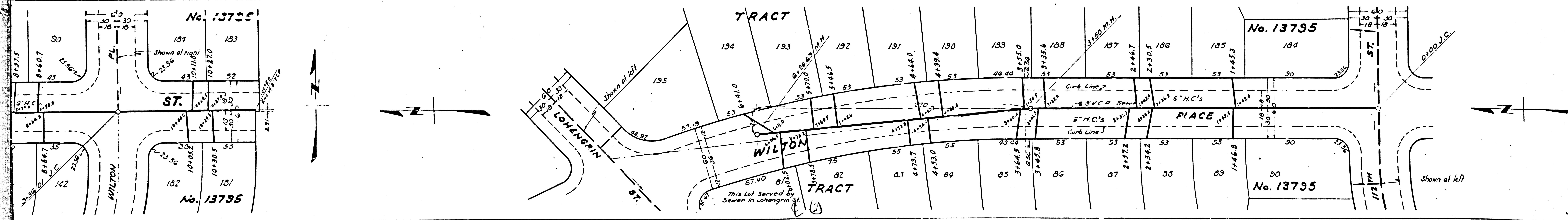
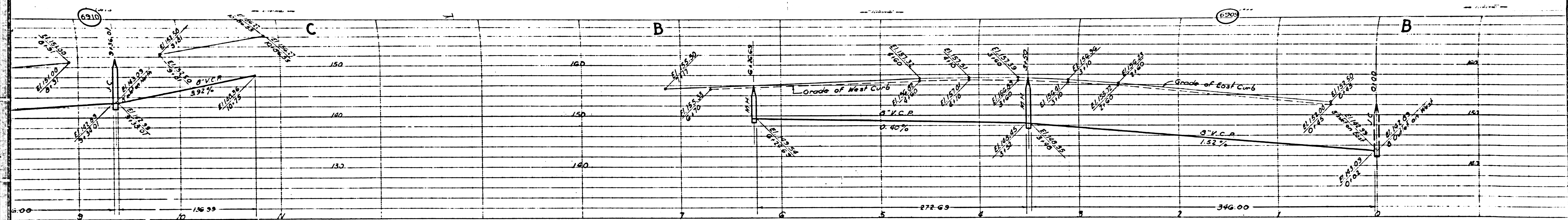
FOR LEGEND
 See Plan No. S-a-64

NOTE:
 Grades to which this improvement is to be constructed are shown on Plans and Profiles. Grade points for top of curb, center line of streets, or center line of a pipe are shown by circles on Profiles. At all points between designated points the grades shall be established so as to conform to a straight line shown between said designated points.
 Elevation are in feet above U.S.G.S. Datum or Mean Sea Level.
 This drawing and the data hereon are hereby made a part of the specifications. Work shall be constructed according to specifications on file in the office of the County Engineer and shall be witnessed only in the presence of the County Engineer. Before work can be started, the Contractor must obtain a permit to excavate in County streets from the L.A. County Road Dept. 1106 No. of Records, and make a deposit with the County Engineer, \$100.00 to cover the cost of the work and to cover the cost of Construction Inspector and Record Plans.



COUNTY OF LOS ANGELES, CALIFORNIA
 APPROVED *Alfred Jones*
 Chief Engineer of County Sanitation District No. 5
 APPROVED *Walter H. Johnson*
 Chief Engineer of County Sanitation District No. 5
 CHECKED *Walter H. Johnson* 7/20/1946
 Office of County Engineer, Reg. C.E. No. 2323

Final Contract 414-7



No. 13795

TRACT

No. 13795

ST.

WILTON

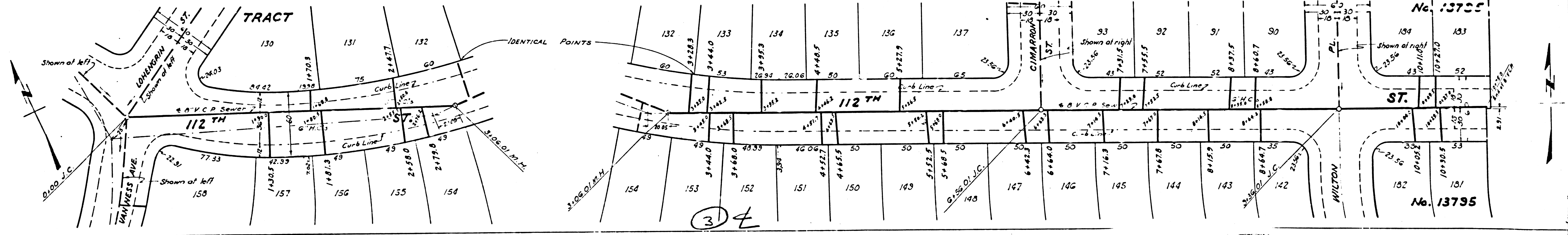
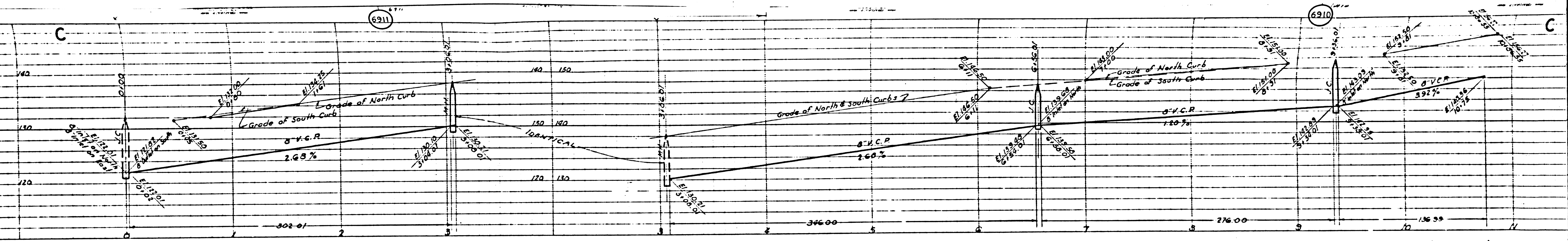
PIACE

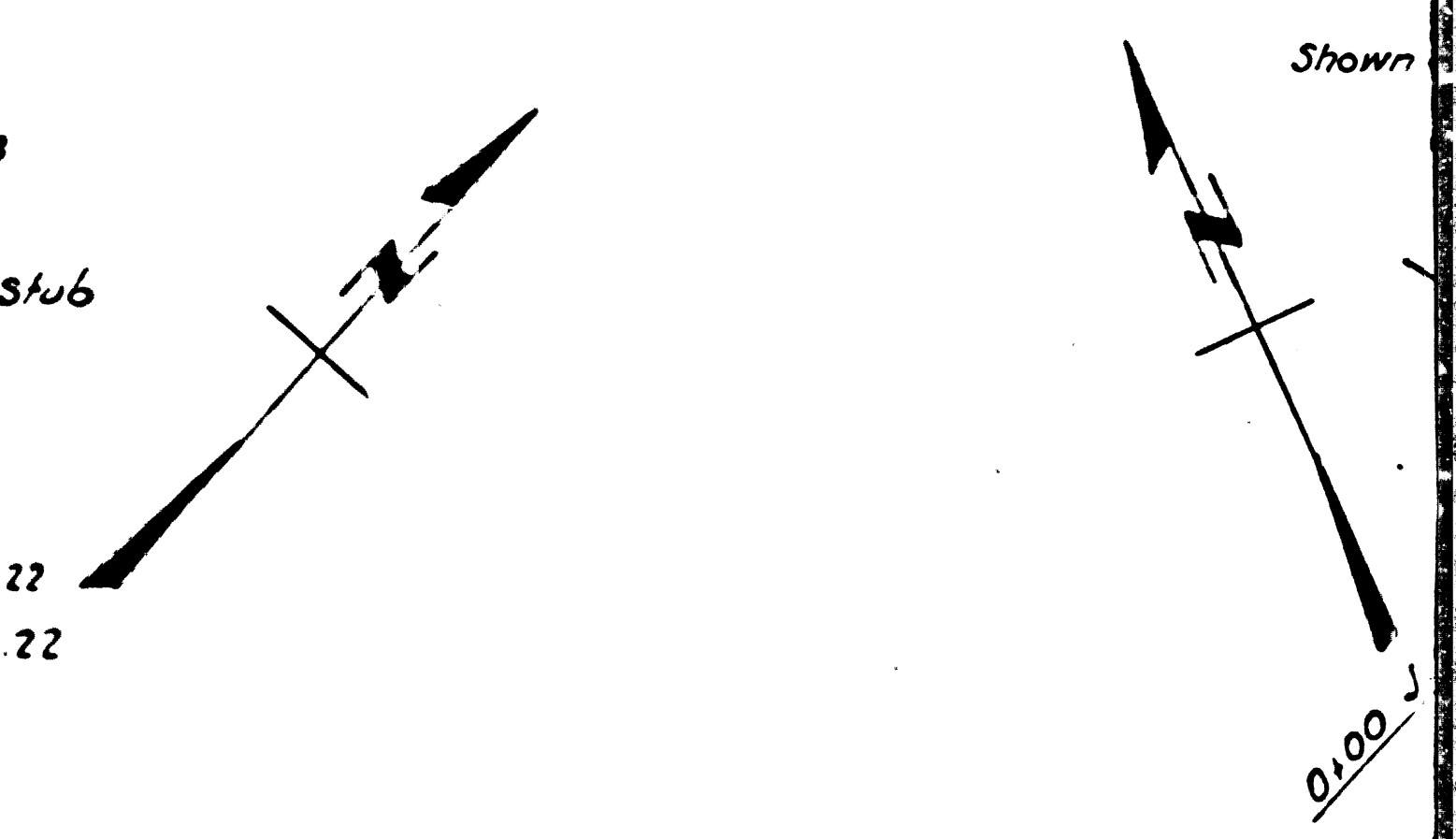
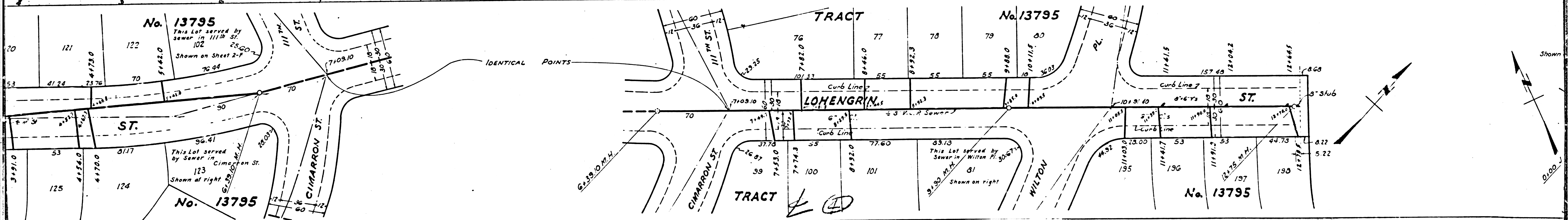
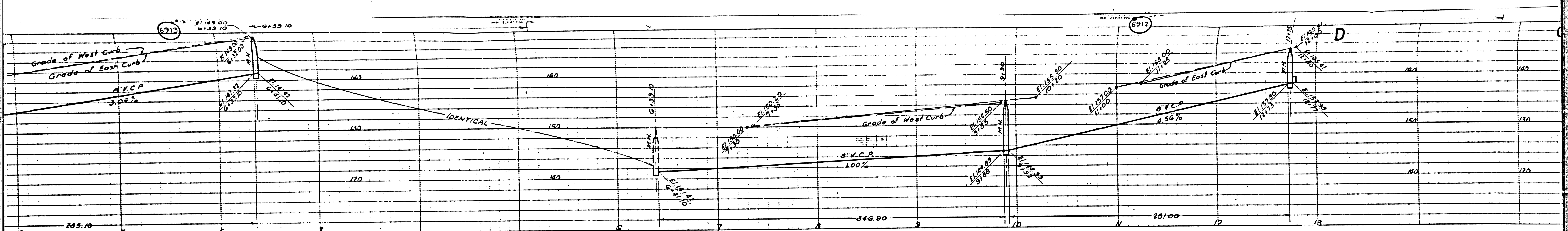
No. 13795

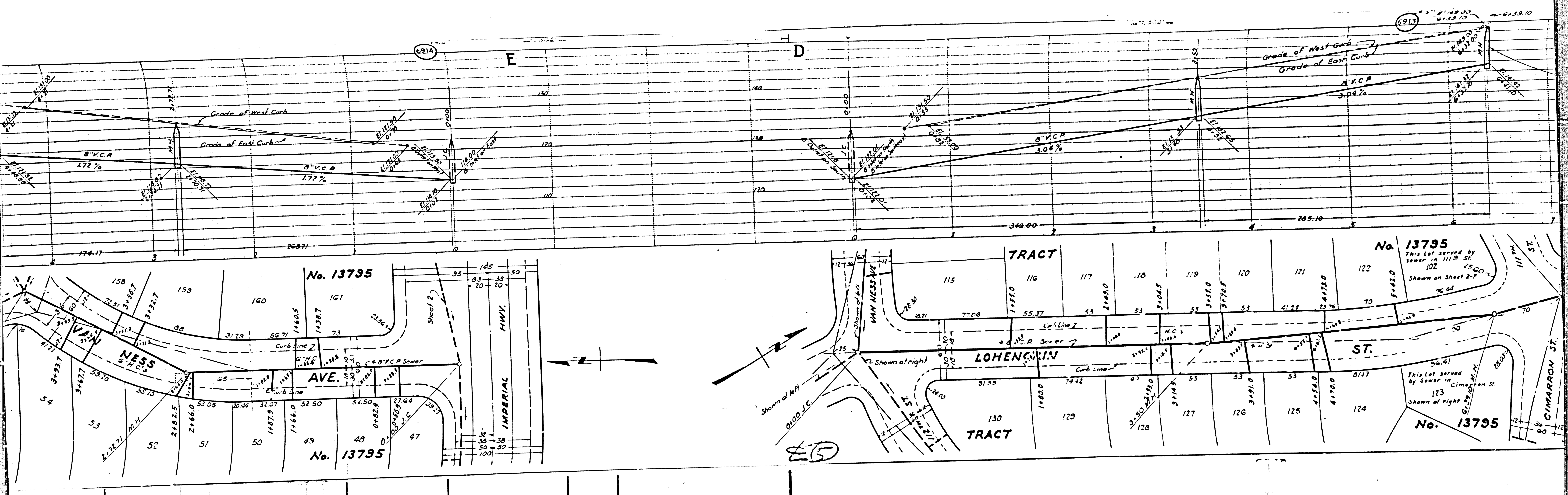
TRACT

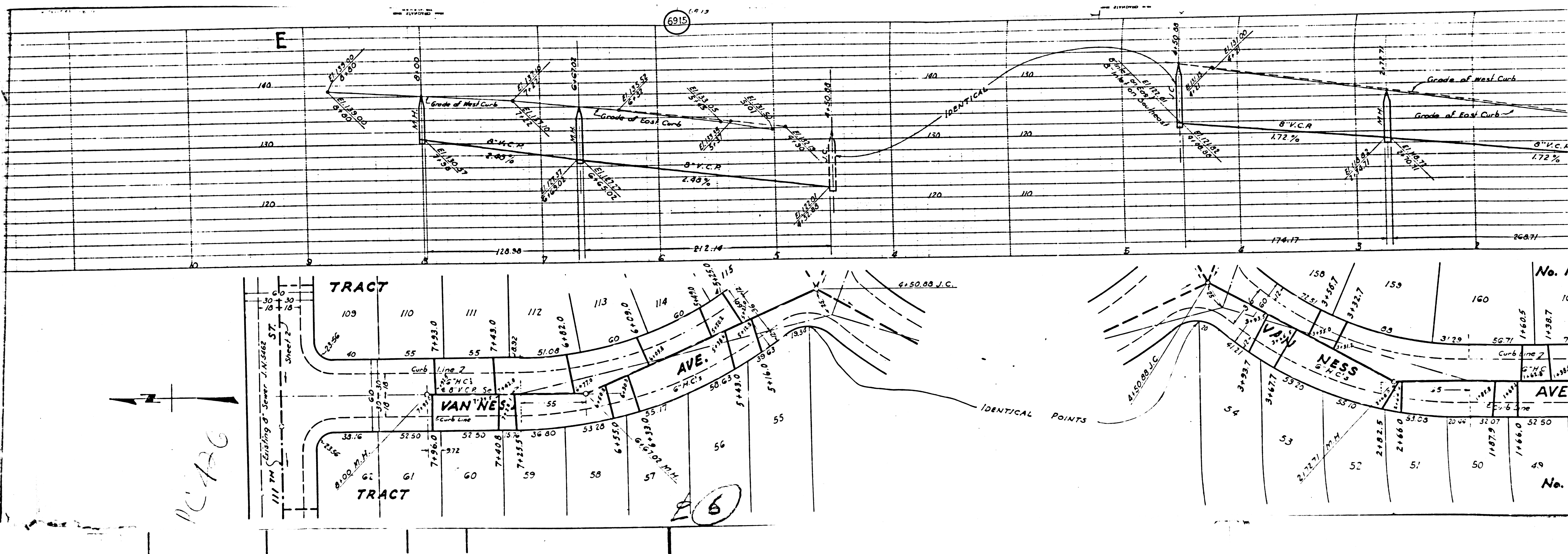
No. 13795

This lot served by Sewer in Lohengrain St.









PC 126

6

6915

No. 1

No.