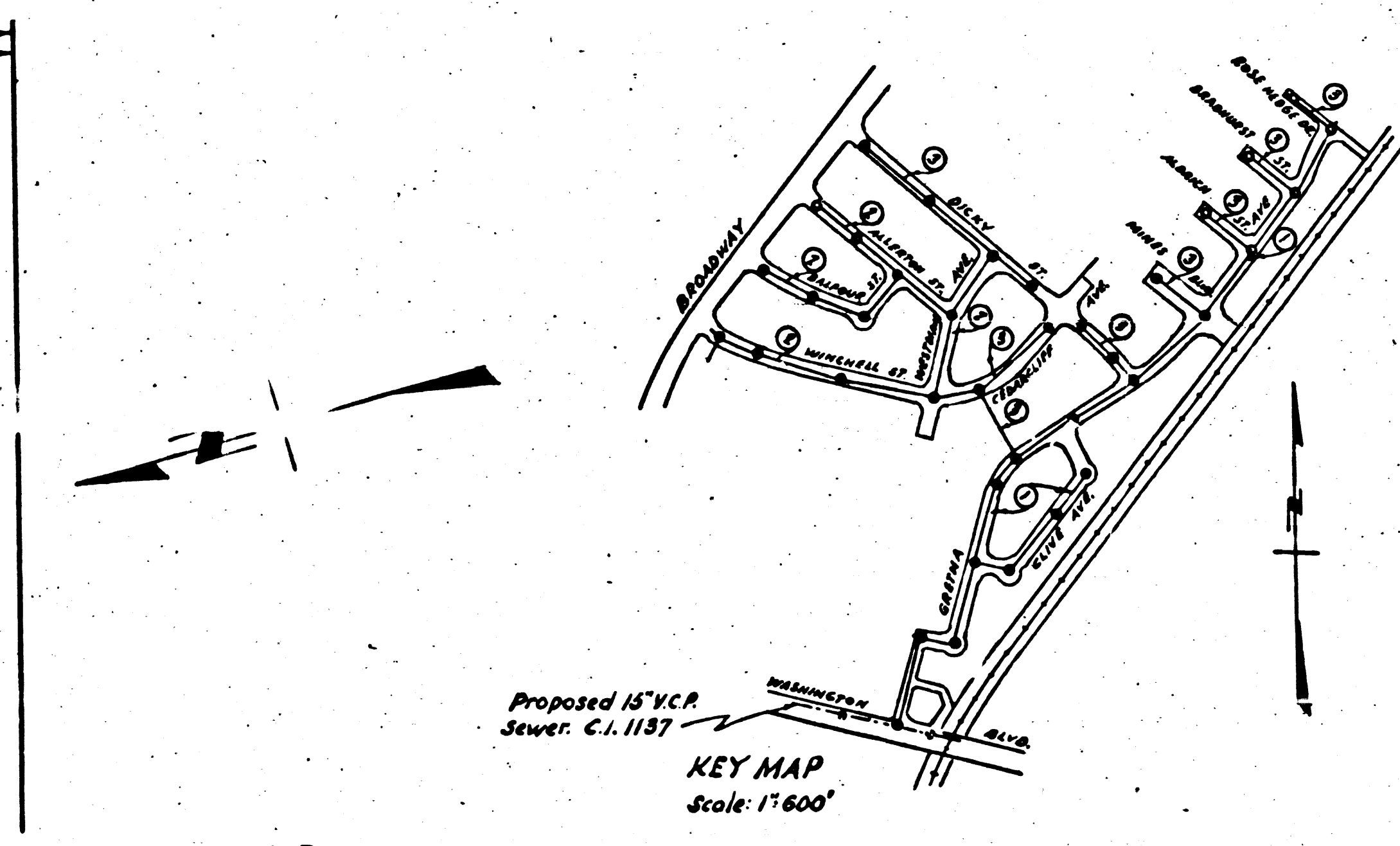
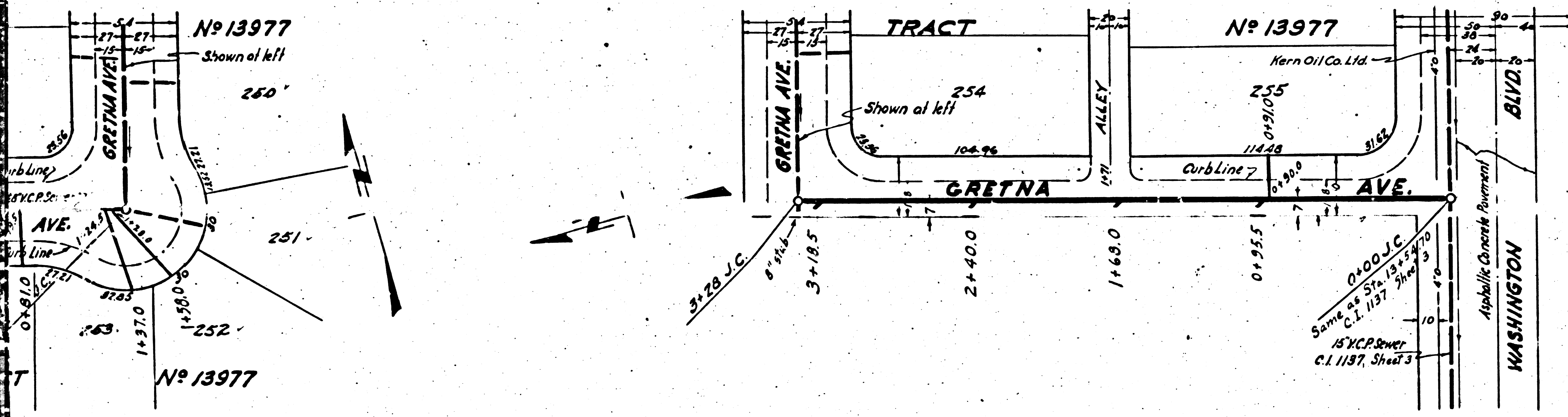


1. Use Standard Manhole Frames and Covers, 5'-0\"/>
- 2. Use Standard Strength Pipe
- 3. Use Cement Mortar for all Vitrified Clay Pipe Joints
- 4. Resurface all Trench within Road Area to meet L.A. County Road Dept. requirements
- 5. Encase four feet of Sewer at points of interference with Poles as per S-1-1-6
- 6. All Structures shall be brick Sewer Structures S-1-1-6-4
- 7. Capstone House Connections with exact of Gutch Line 5 feet below Curb Grade.

PROFILE ALIGNMENT AND GRADE OF
SANITARY SEWERS
 TO BE CONSTRUCTED IN
GREINA AVENUE
 BETWEEN WASHINGTON BLVD. & ROSE HEDGE LANE
CLIVE AVENUE

PRIVATE CONTRACT NO. 436
W.S. 37
 SHEET 1 OF 3 SHEETS
 Scale: Vert. 1"=4'
 Horiz. 1"=40'
 PREPARED IN THE OFFICES OF
SEABOARD ENGINEERING CO.
 by **Mark A. Olson**
 Reg. C.E. No. 2059

NOTE:
 No representation of the County Engineer will survey or lay out any portion of the work.
 This drawing is the responsibility of the contractor. The County Engineer will check the
 work and will not be held responsible for any errors or omissions. The contractor shall
 be responsible for all house connections and V. Records and shall provide stamps for them
 at their proper locations with stationing plainly marked. Any change of location shall be
 requested in writing by the owner of the responsibility.
 No impositions shall be made in this plan without approval of the County Engineer.



NOTE:
 Grades to which this improvement is to be constructed are shown on Plan and Profiles.
 Grade points for the top of curb, center line of streets or center line of utility are shown on
 cross-section Profiles. At all points between designated points the grade shall be established
 so as to conform to a straight line drawn between said designated points.
 Elevations are in feet above U.S.C.S. Datum or Mean Sea Level.
 This drawing and the data herein are hereby made a part of the specifications.
 Work shall be constructed according to specifications on file in the office of the
 County Engineer and shall be prosecuted and in the presence of the County Engineer.
 Before work can be started the Contractor must obtain a permit to excavate in
 County streets from the L.A. County Road Dept. 1104 Hall of Records and make
 a deposit with the County Engineer, 700 Fashion League Building, sufficient to cover
 the cost of Construction Inspection and Record Plans.

COUNTY OF LOS ANGELES, CALIFORNIA
 APPROVED **Edmund**
 Chief Deputy County Engineer
 APPROVED **C. P. Conroy**
 Asst. Chief Engineer of County
 Sanitation District No. 2
 CHECKED **Arthur**
 Office of County Engineer, Reg. C.E. No. 433

Revised B/L

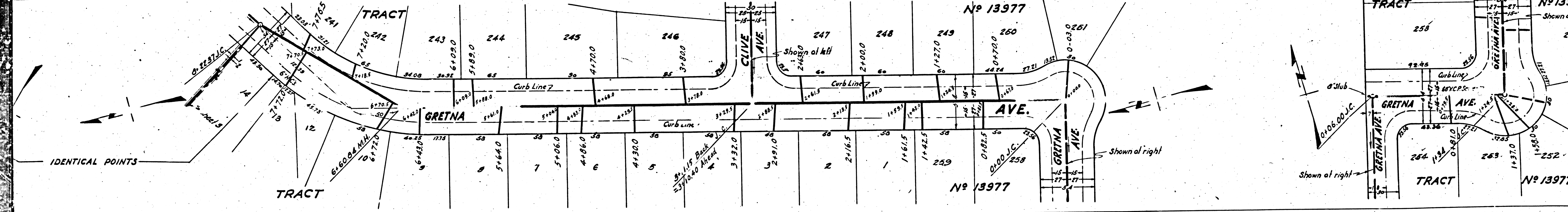
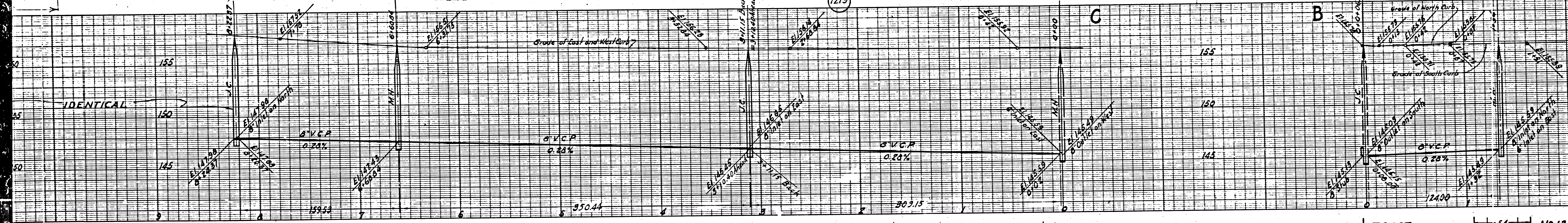
NEW YORK
KENNETH KEEFER CO.

NEW YORK
KENNETH KEEFER CO.

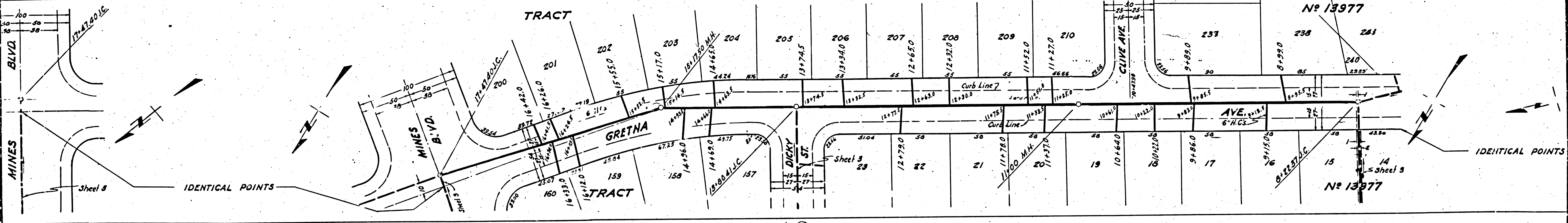
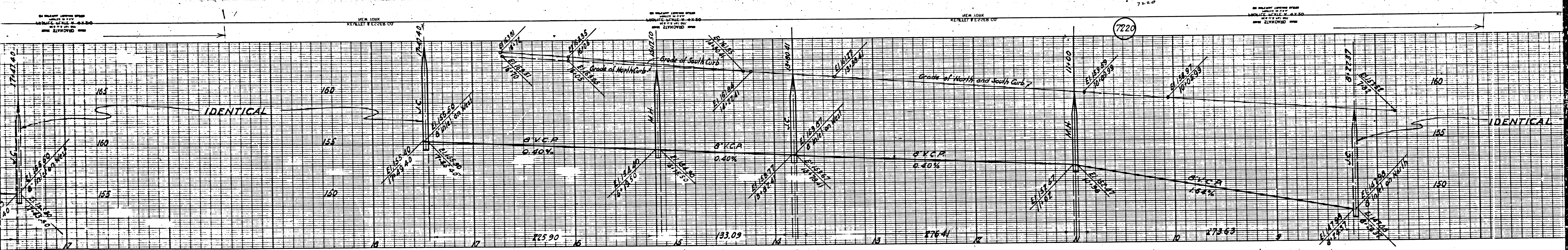
NEW YORK
KENNETH KEEFER CO.

NEW YORK
KENNETH KEEFER CO.

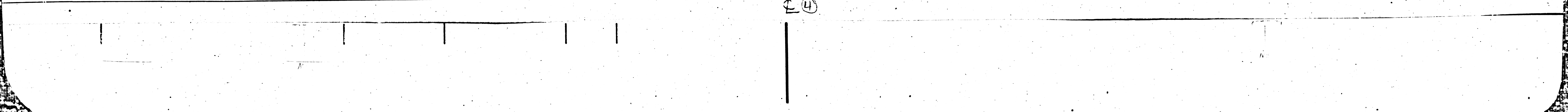
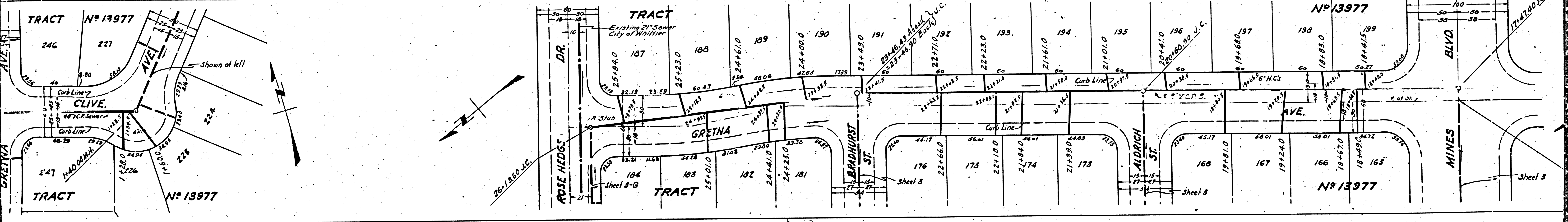
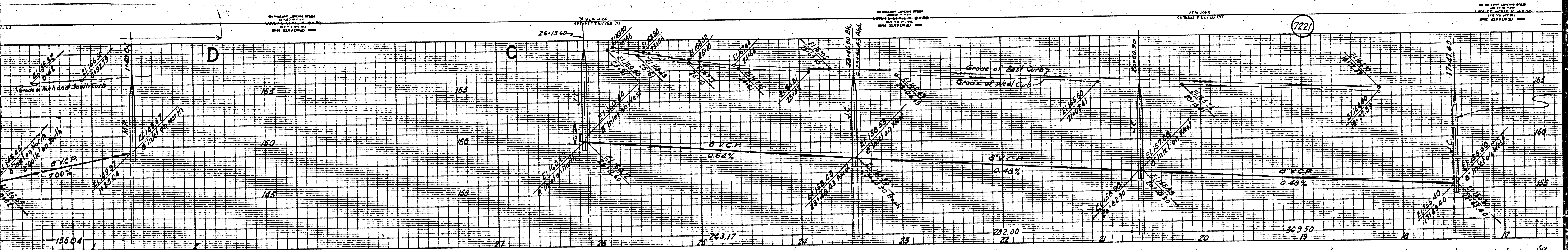
NEW YORK
KENNETH KEEFER CO.

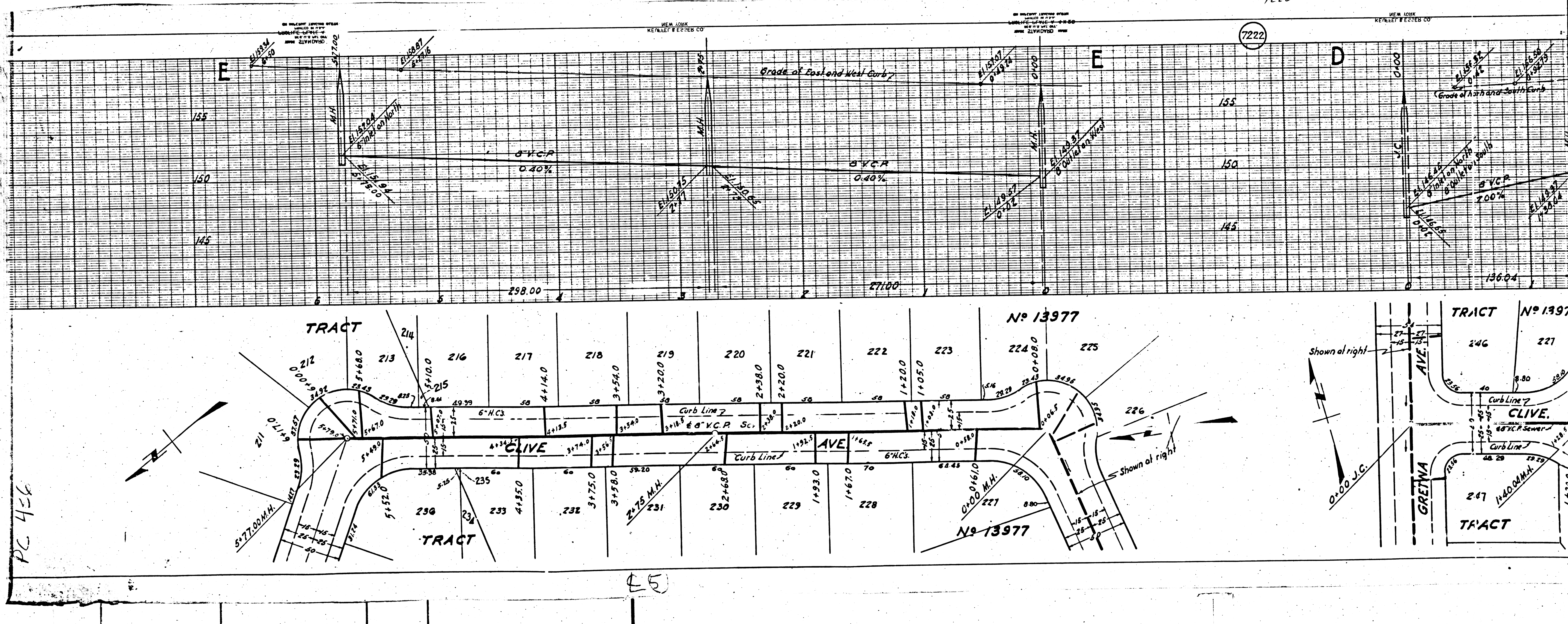


Ⓢ

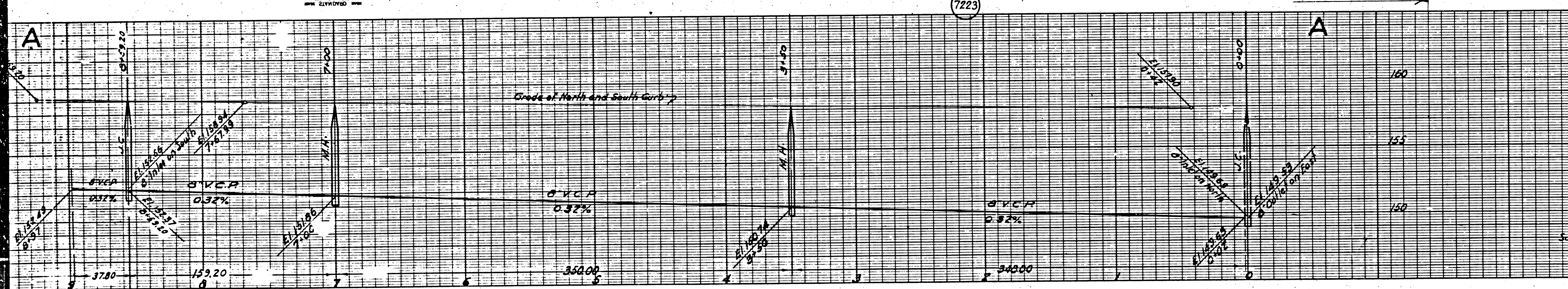


(3)





7223



PROFILE, ALIGNMENT AND GRADE OF
SANITARY SEWERS
 TO BE CONSTRUCTED IN
WINCHELL STREET
ALLERTON STREET
 BETWEEN WESTERN AVE. & BROADWAY
BALFOUR STREET
 BETWEEN ALLERTON ST. & BROADWAY
WESTMAN AVENUE
 BETWEEN WINCHELL ST. & DIXIE ST.

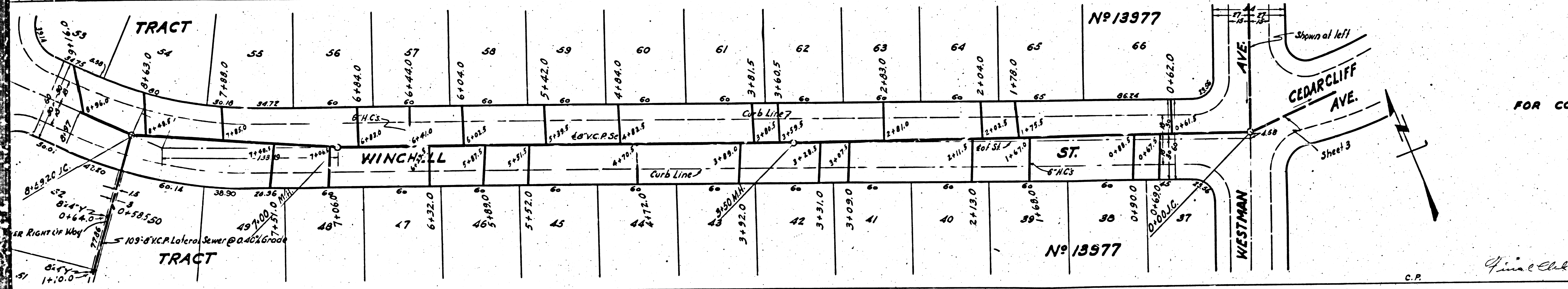
PRIVATE CONTRACT No. 486
 W.S. 37
 SHEET 7 OF 3 SHEETS

Scale: Vert. 1" = 4'
 Horiz. 1" = 40'

PREPARED IN THE OFFICES OF
SEABOARD ENGINEERING CO.

BY *Mark A. Robin*
 Reg. C.E. No. 1053

FOR LEGEND
 See Plan No. S-0-06



436

FOR CONSTRUCTION NOTES SEE SHEET 1.

COUNTY OF LOS ANGELES, CALIFORNIA

APPROVED *Edmund*
 Chief Deputy County Engineer

APPROVED *C.K. Constan*
 Asst. Chief Engineer of County
 Sanitation District No. 8

CHECKED *Autumn* 10/14/1946
 Office of County Engineer, Reg. C.E. No. 4233

Final E.D. 10-9-47 C.E.T.

Revised B/L

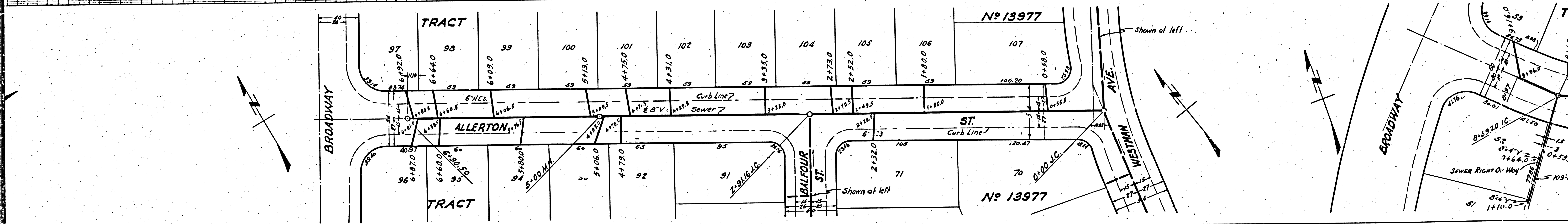
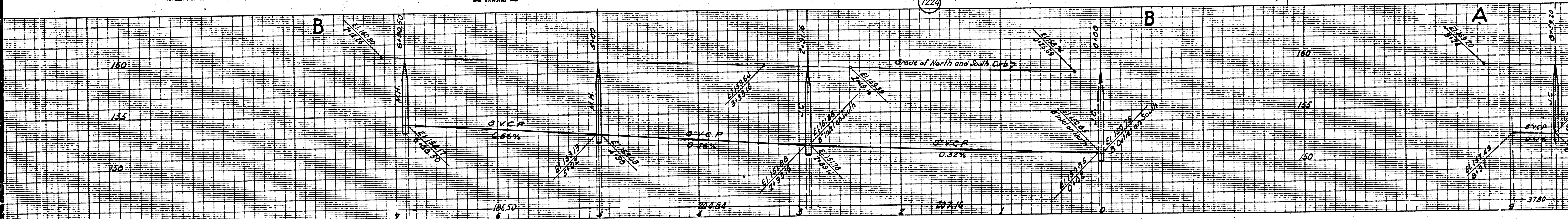
NEW YORK
KENNEL & CO. INC.

NEW YORK
KENNEL & CO. INC.

NEW YORK
KENNEL & CO. INC.

NEW YORK
KENNEL & CO. INC.

NEW YORK
KENNEL & CO. INC.



(5)

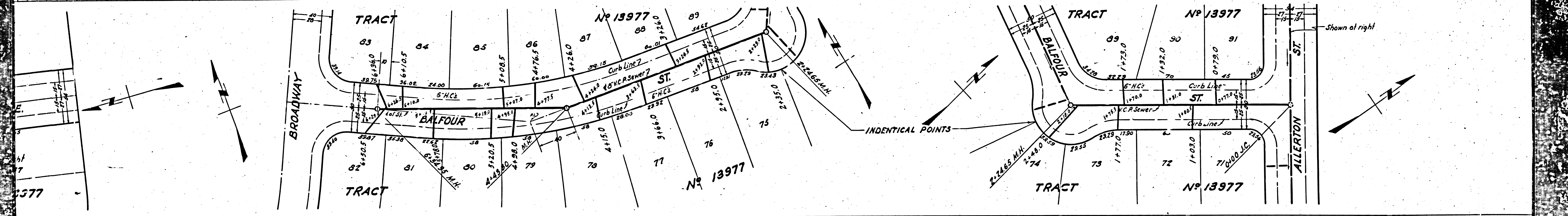
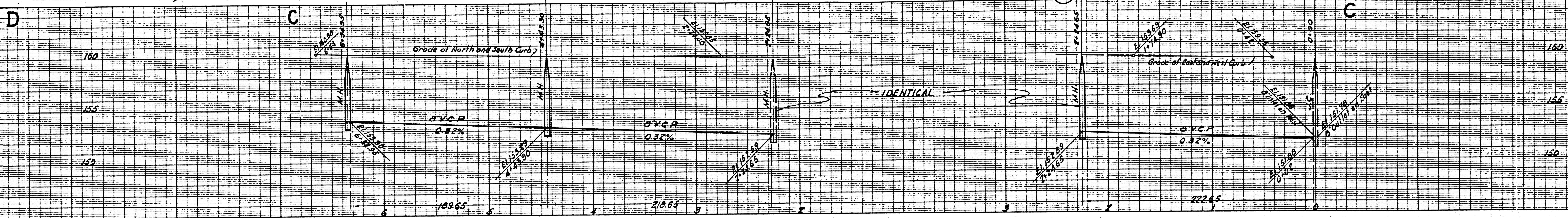
NEW YORK
REVELL & PEREZ CO.

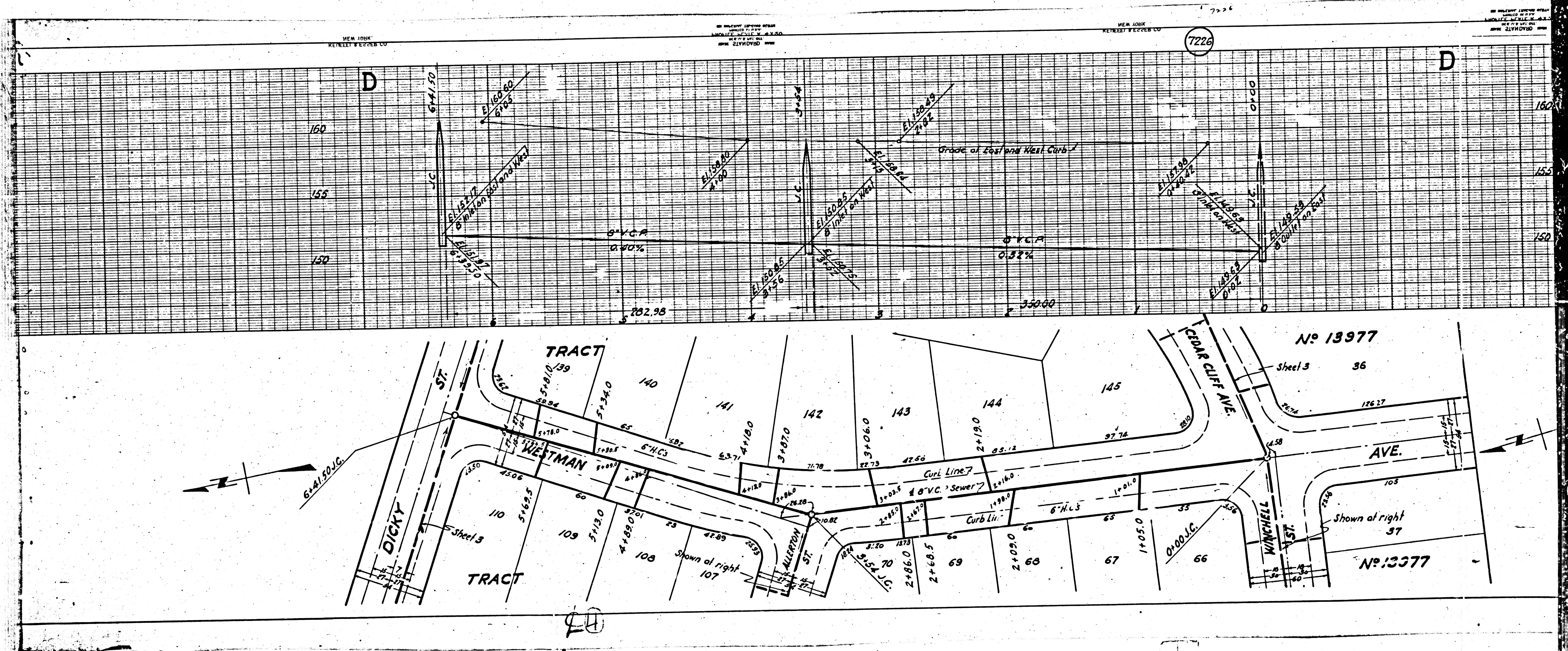
NEW YORK
REVELL & PEREZ CO.

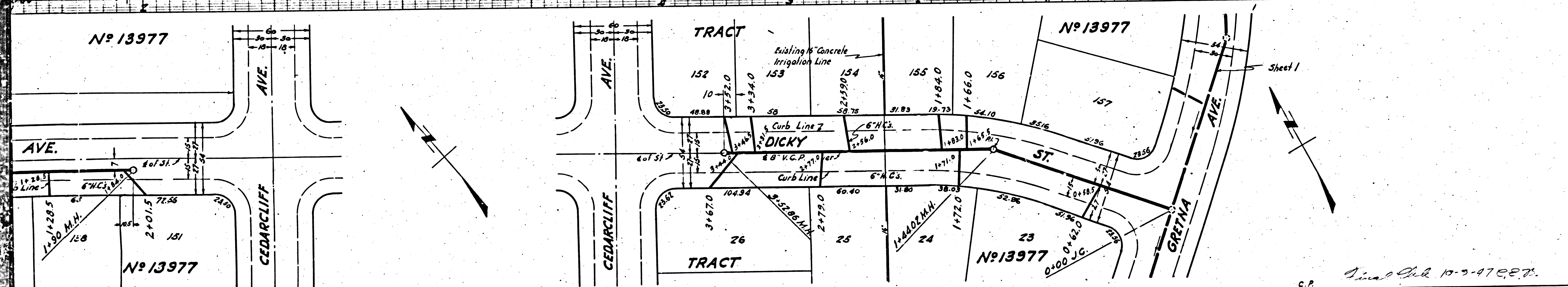
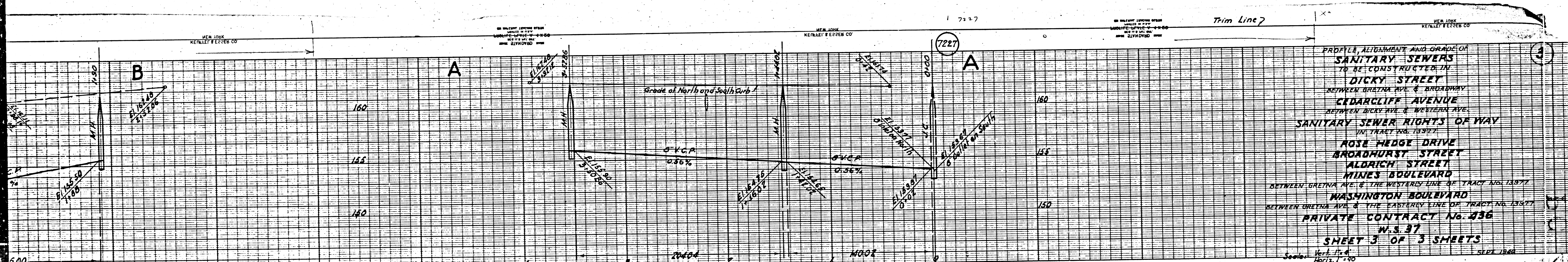
NEW YORK
REVELL & PEREZ CO.

NEW YORK
REVELL & PEREZ CO.

NEW YORK
REVELL & PEREZ CO.







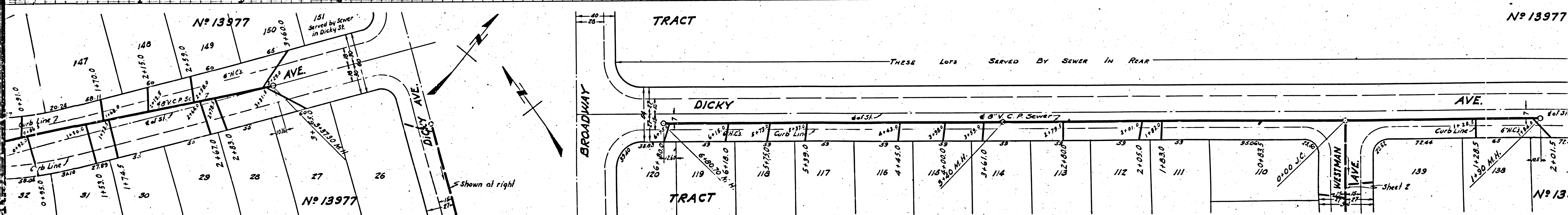
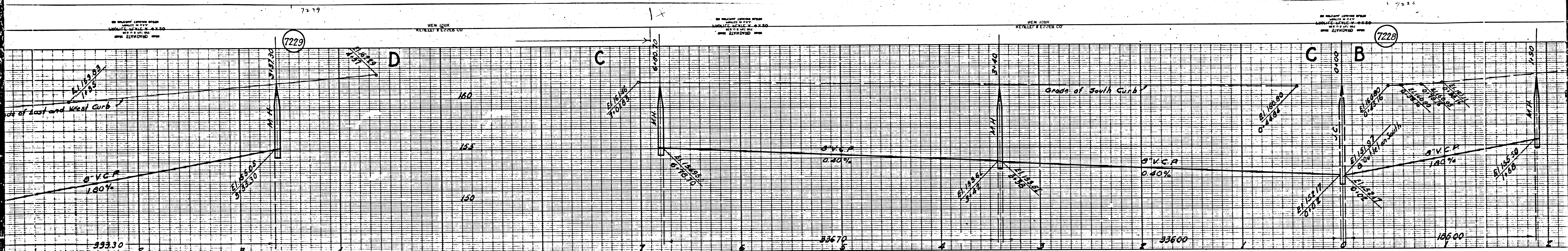
PROFILE ALIGNMENT AND GRADE OF
SANITARY SEWERS
 TO BE CONSTRUCTED IN
DICKY STREET
 BETWEEN GRETNA AVE. & BROADWAY
CEDARCLIFF AVENUE
 BETWEEN DICKY AVE. & WESTERN AVE.
SANITARY SEWER RIGHTS OF WAY
 IN TRACT NO. 13977
ROSE HEDGE DRIVE
BROADHURST STREET
ALDRICH STREET
MINES BOULEVARD
 BETWEEN GRETNA AVE. & THE WESTERN LINE OF TRACT NO. 13977
WASHINGTON BOULEVARD
 BETWEEN GRETNA AVE. & THE EASTERN LINE OF TRACT NO. 13977
PRIVATE CONTRACT No. 436
W.S. 37
SHEET 3 OF 3 SHEETS
 Scale: Vert. 1" = 4' Horiz. 1" = 40' SEP 1946

PREPARED IN THE OFFICES OF
SEABOARD ENGINEERING CO.
 By *Mark A. Robin*
 Reg. C.E. No. 2053
 FOR LEGEND
 See Plan No. S-a-66
FOR CONSTRUCTION NOTES SEE SHEET 1.

COUNTY OF LOS ANGELES, CALIFORNIA
 APPROVED *[Signature]*
 Chief Deputy County Engineer
 APPROVED *[Signature]*
 Asst. Chief Engineer of County
 Sanitation District No. 2
 CHECKED *[Signature]* 10/16/1946
 Office of County Engineer, Reg. C.E. No. 6334

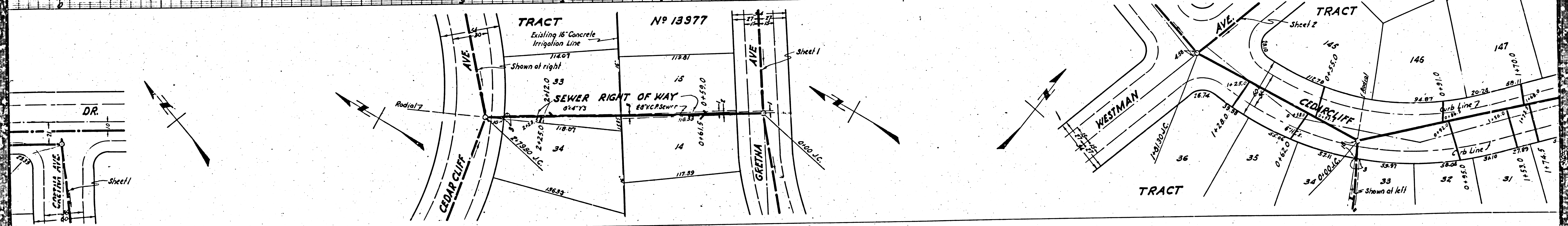
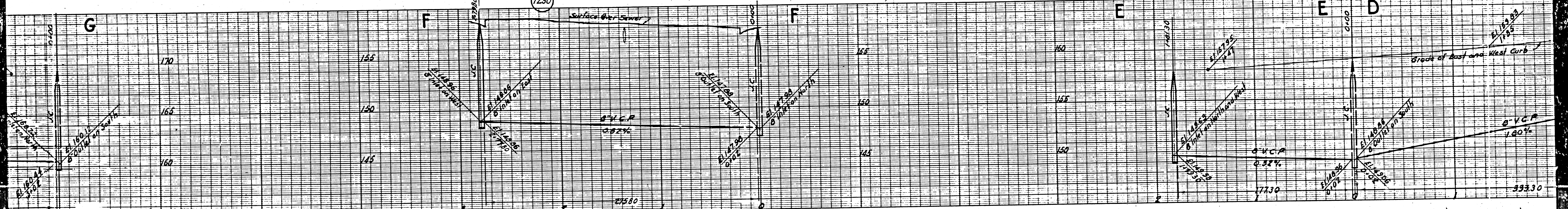
C.P. *Final Check 10-7-47 C.E.T.*
 Trim Line
 Revised *3/1*

EO

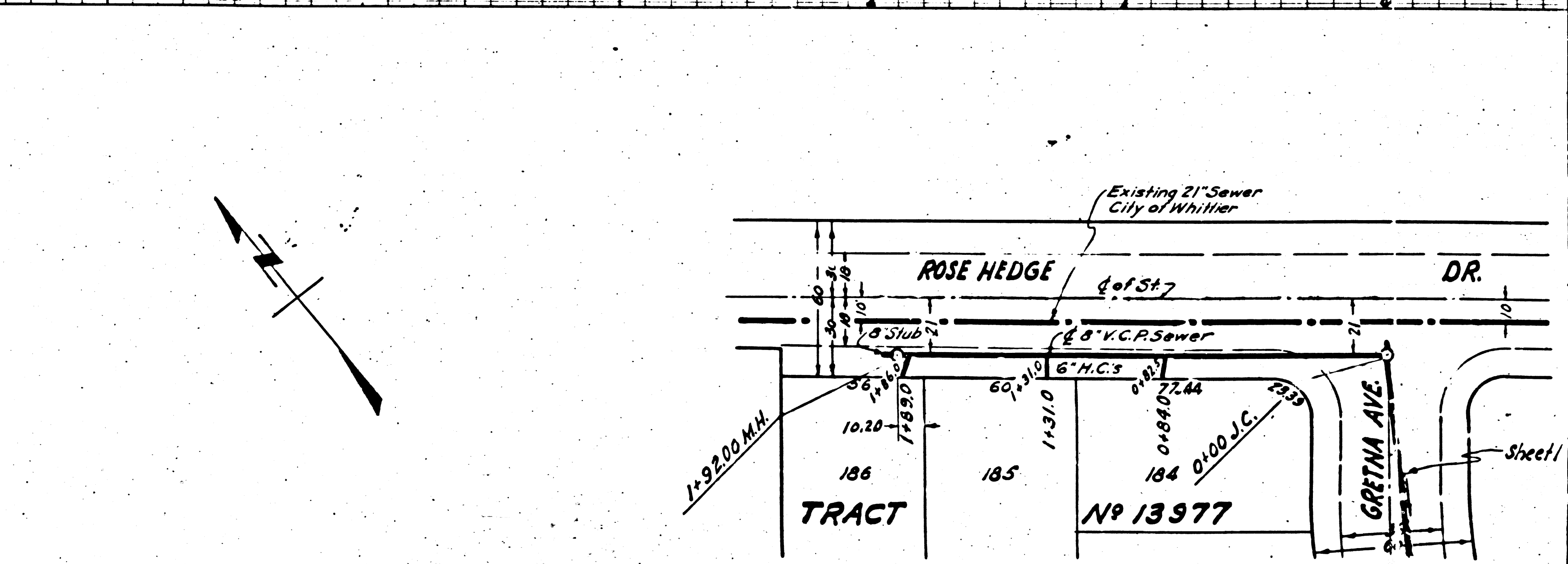
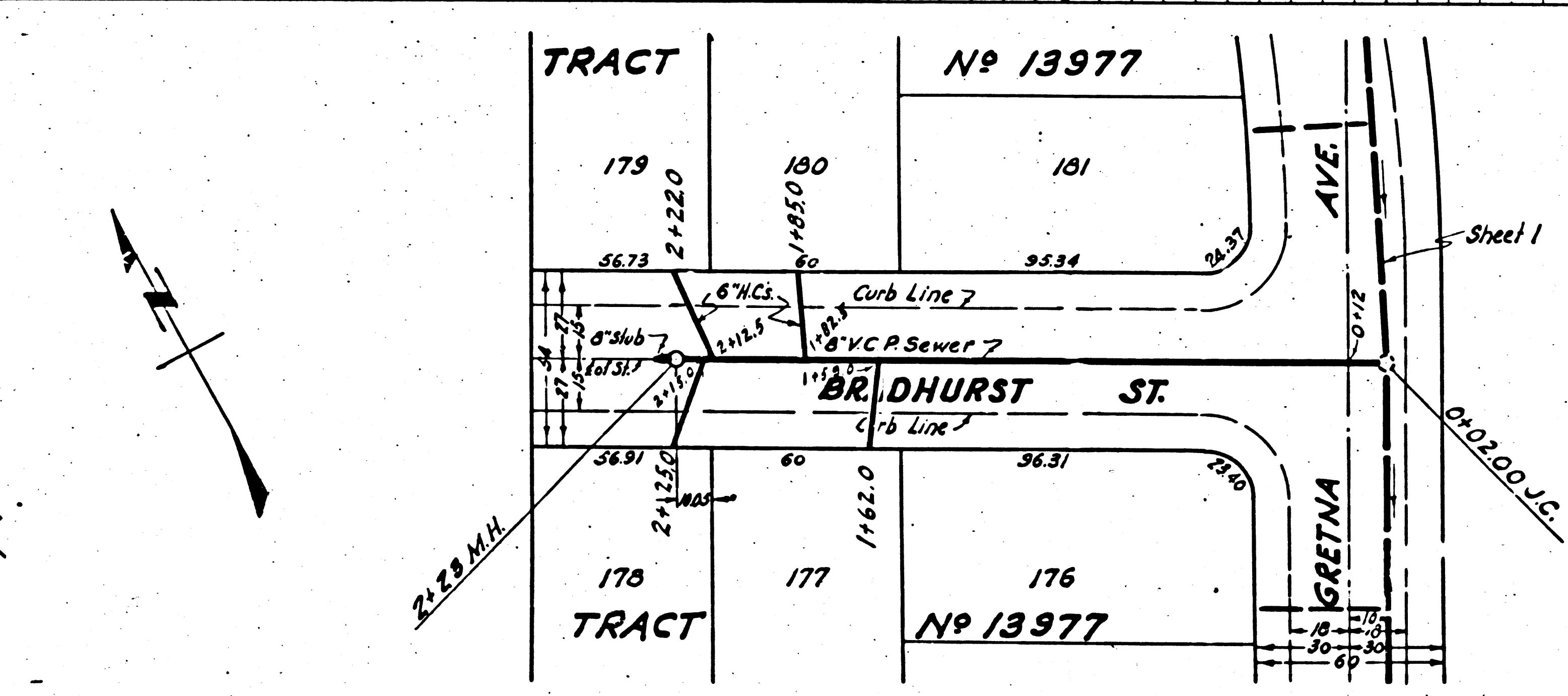
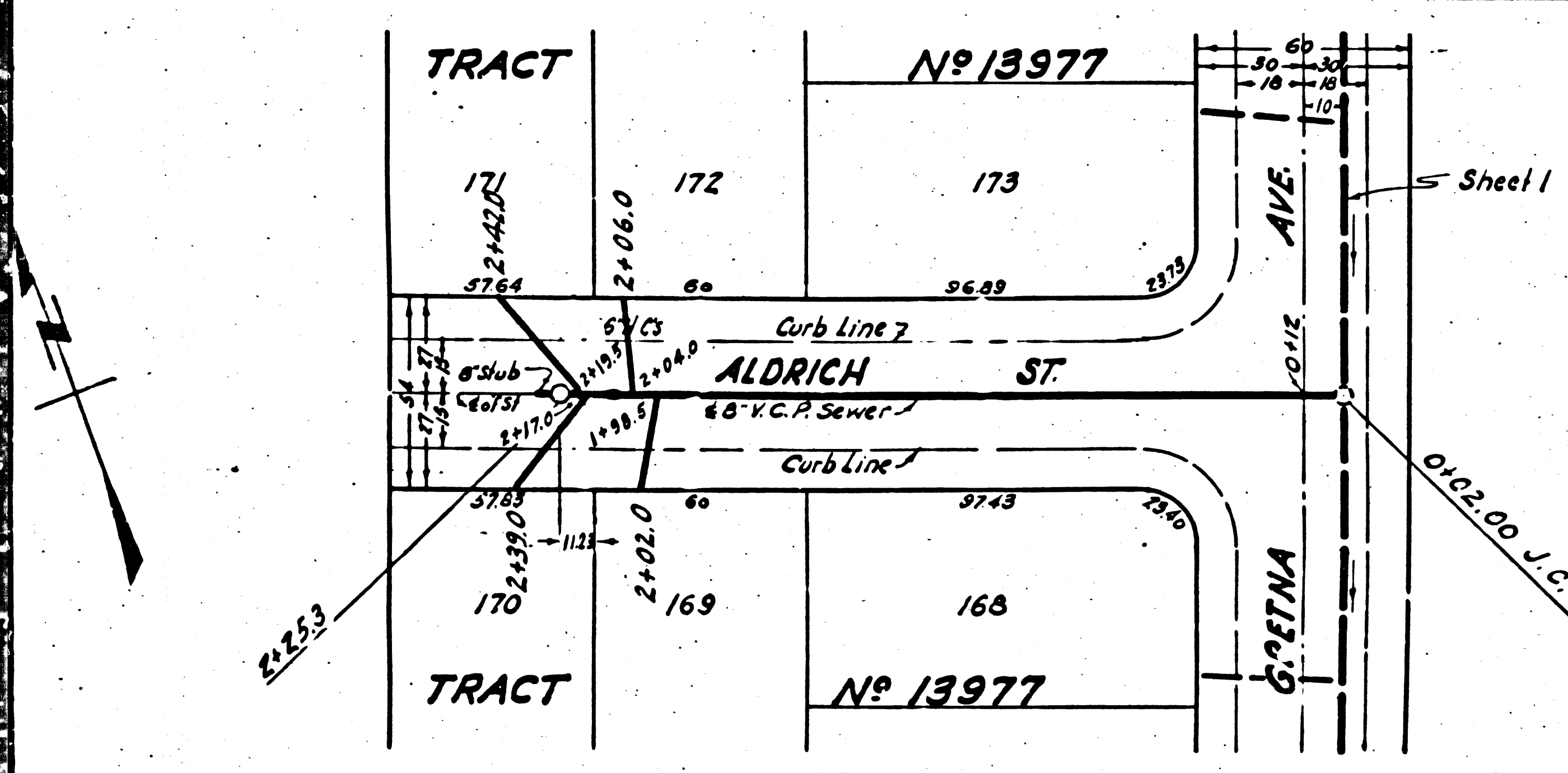
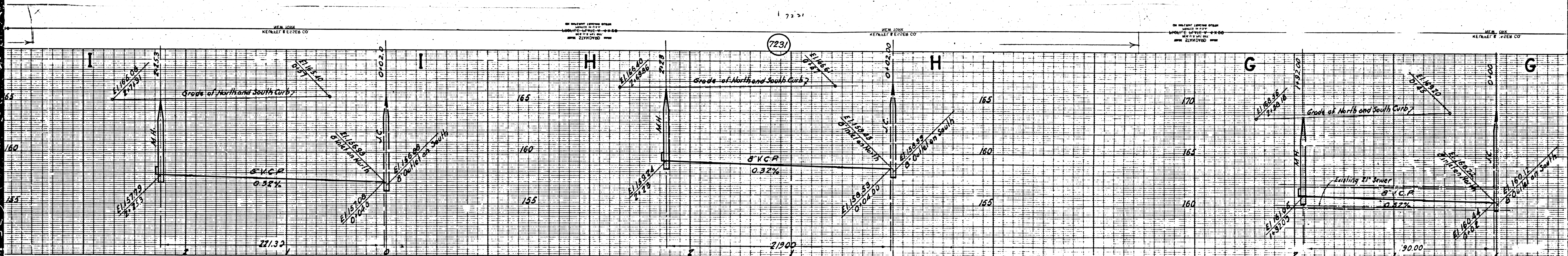


(2)

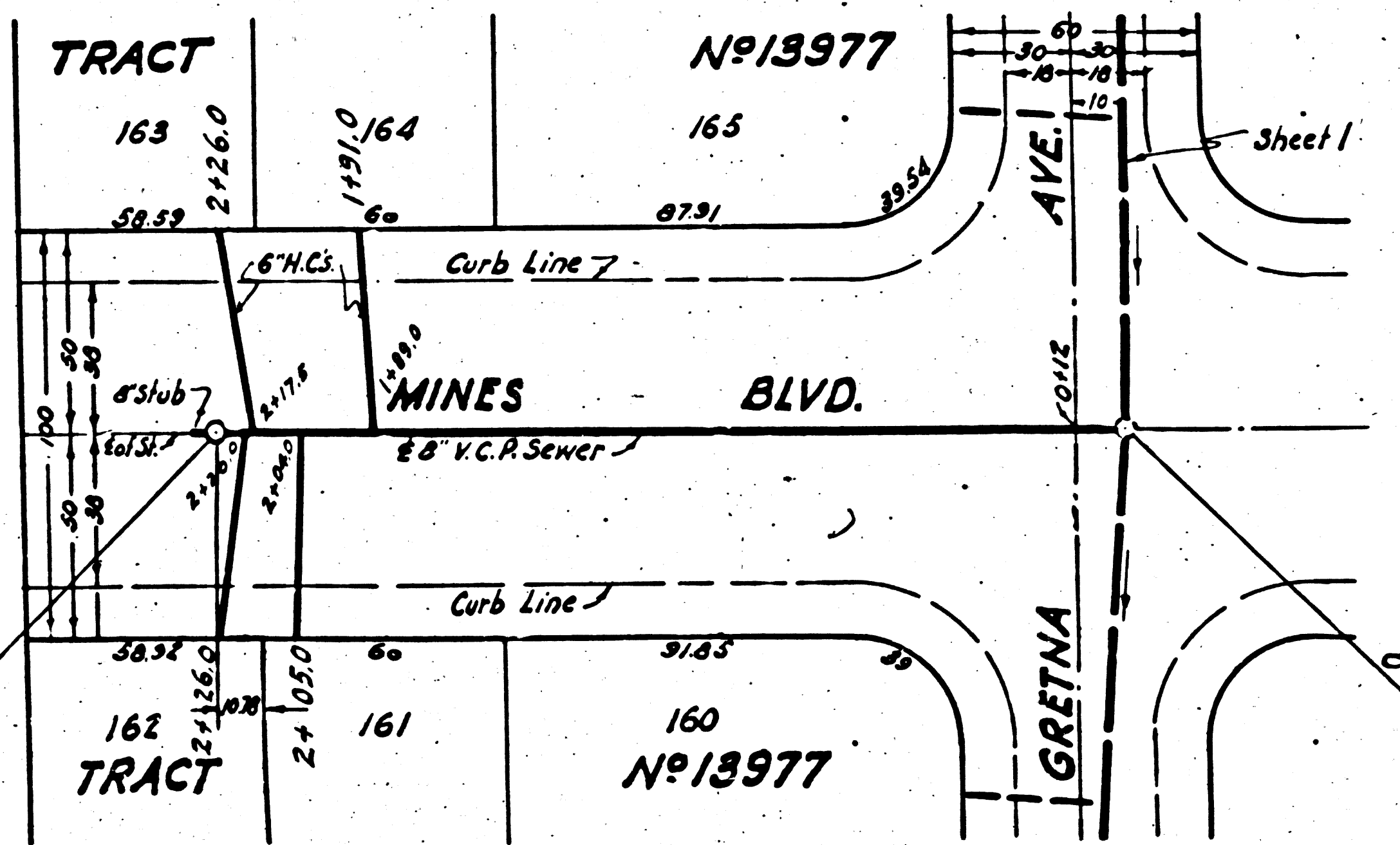
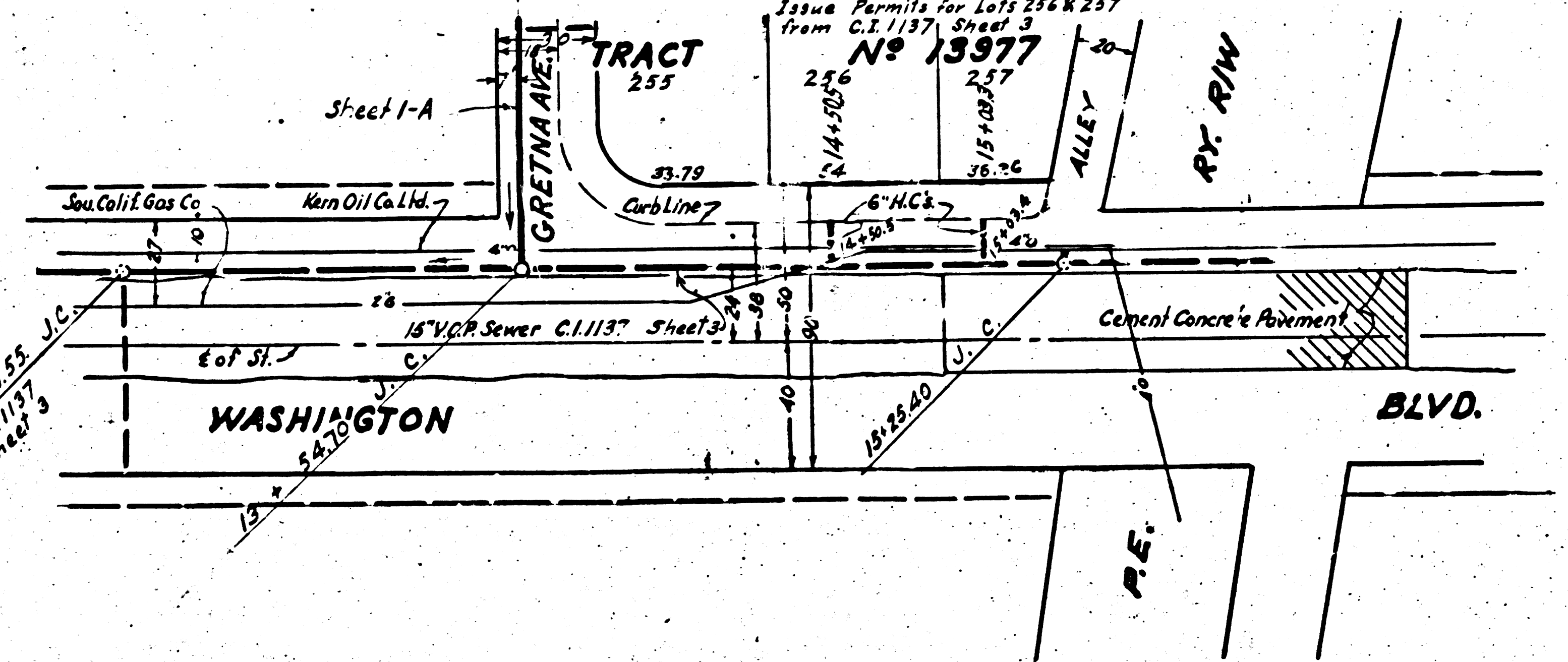
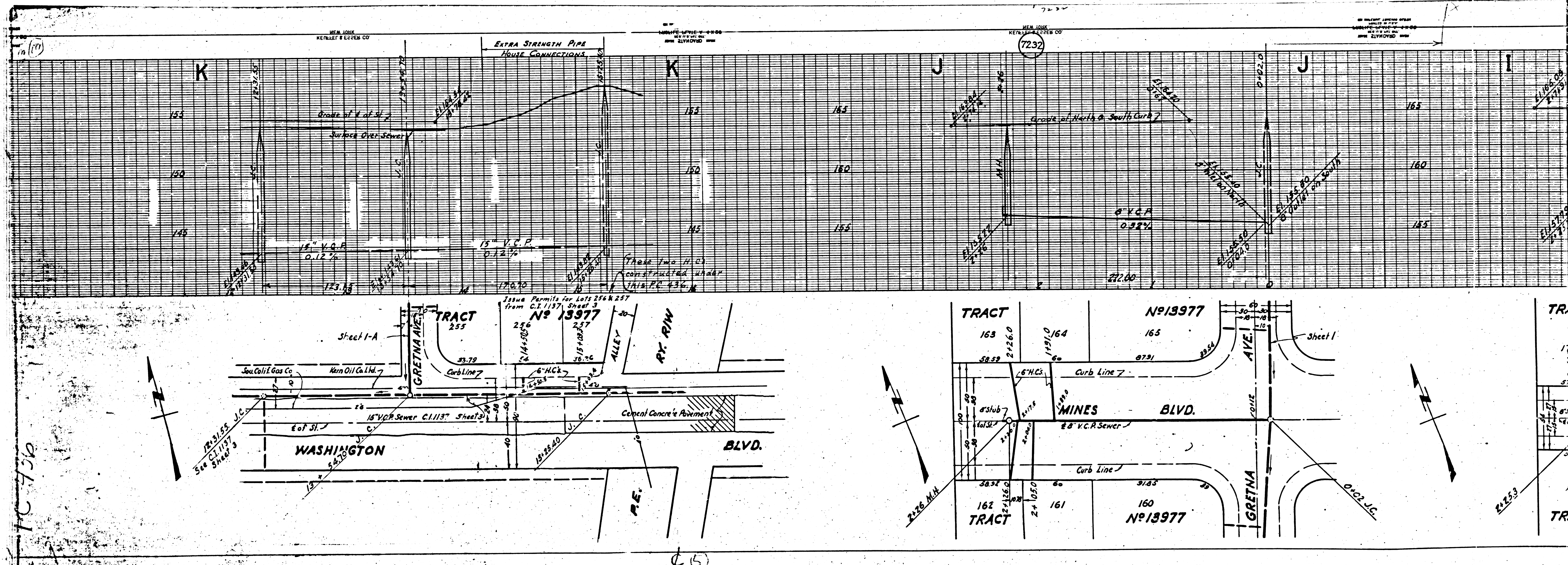
NEW YORK STATE ENGINEERING EXAMINERS
 REGISTERED PROFESSIONAL ENGINEERS
 NEW YORK STATE ENGINEERING EXAMINERS
 REGISTERED PROFESSIONAL ENGINEERS



③



24



TC 750

25