

6963

- (1) Use Standard Manhole Frames and Covers, S-a-107
- (2) Use Standard Strength Pipe
- (3) Use Cement Mortar for all Vitrified Clay Pipe Joints
- (4) Construct House Connections with Invert at Curb Line, 5 Feet below Curb Grade
- (5) All Structures shall be Brick Sewer Structures, S-a-104

PROFILE, ALIGNMENT AND GRADE OF  
**SANITARY SEWERS**  
 TO BE CONSTRUCTED IN  
**GRETTA AVE.**  
 BETWEEN ROSE HEDGE DR. AND BULLBY DR.

PRIVATE CONTRACT NO. 437  
 W.S. 37  
 ONE SHEET

SCALE: VERT. 1"=4'  
 HOR. 1"=40'  
 SEPTEMBER 1946  
 PREPARED IN THE OFFICES OF JOHN M. KEMMERER,  
 COUNTY ENGINEER  
 REG. C.E. NO. 2172

Note: No representative of the County Engineer will survey or lay out any portion of the work. The owner or his authorized representative shall furnish the County Engineer with boundary and starting points for all connections and Y Branches and shall provide stakes for them at their proper locations with adjoining plainly marked. Any change of location shall be requested in writing by the Owner or his representative. No revision shall be made in these plans without approval of the County Engineer.

FOR LEGEND  
 SEE PLAN NO. S-a-G4

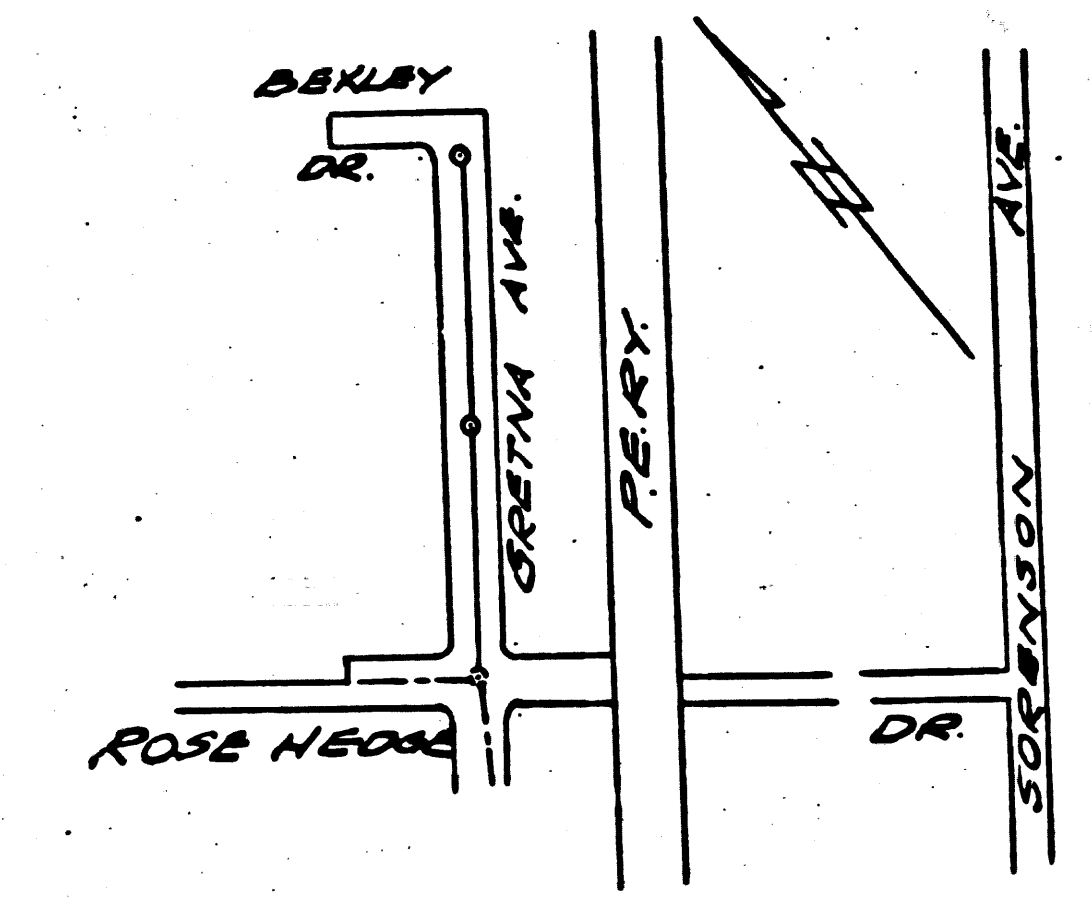
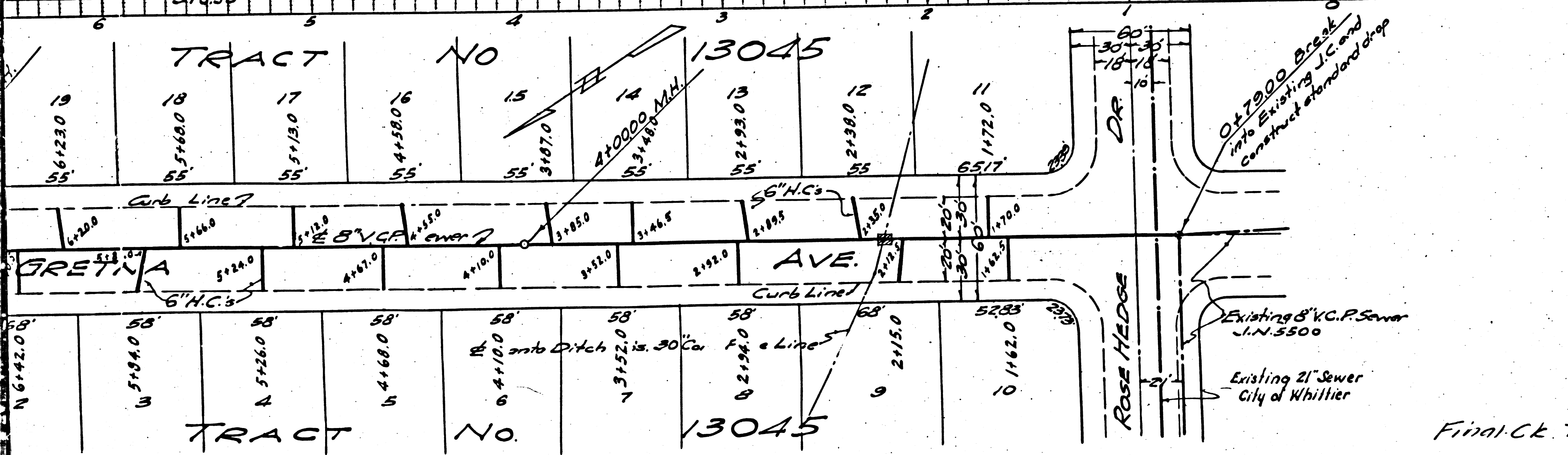
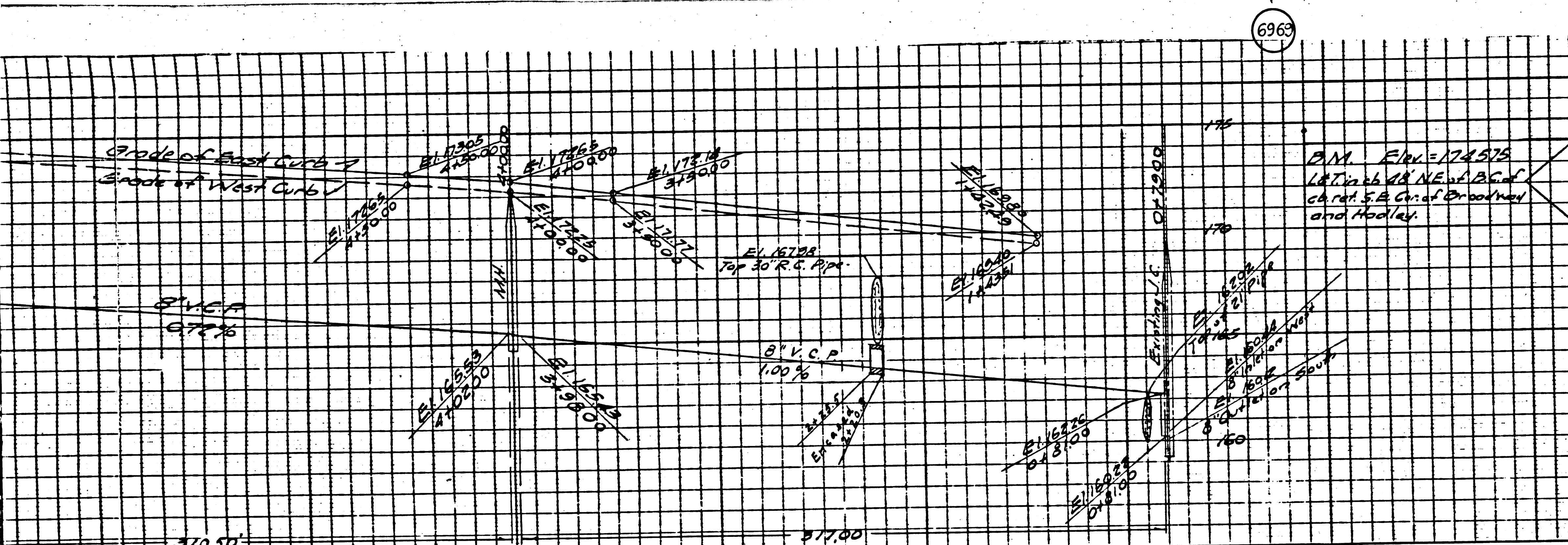
NOTE:  
 GRADES TO WHICH THIS IMPROVEMENT IS TO BE CONSTRUCTED ARE SHOWN ON PLANS AND PROFILE. GRADE POINTS FOR TOP OF CURB, CENTER LINE OF STREET OR CENTER LINE OF ALLEY ARE SHOWN BY CIRCLES ON PROFILES. AT ALL POINTS BETWEEN DESIGNATED POINTS THE GRADE SHALL BE ESTABLISHED SO AS TO CONFORM TO A STRAIGHT LINE DRAWN BETWEEN SAID DESIGNATED POINTS.  
 ELEVATIONS ARE IN FEET ABOVE U.S.G.S. DATUM OR MEAN SEA LEVEL.  
 THIS DRAWING AND THE DATA HEREON ARE HEREBY MADE A PART OF THE SPECIFICATIONS. WORK SHALL BE CONSTRUCTED ACCORDING TO SPECIFICATIONS ON FILE IN THE OFFICE OF THE COUNTY ENGINEER AND SHALL BE PROSECUTED ONLY IN THE PRESENCE OF THE COUNTY ENGINEER.  
 BEFORE WORK CAN BE STARTED, THE CONTRACTOR MUST OBTAIN A PERMIT TO EXCAVATE IN COUNTY STREETS FROM THE L.A. COUNTY ROAD DEPT., 1106 HALL OF RECORDS, AND MAKE A DEPOSIT WITH THE COUNTY ENGINEER, 700 FASHION LEAGUE BLDG., SUFFICIENT TO COVER THE COST OF CONSTRUCTION INSPECTION AND RECORD PLANS.

COUNTY OF LOS ANGELES, CALIFORNIA.

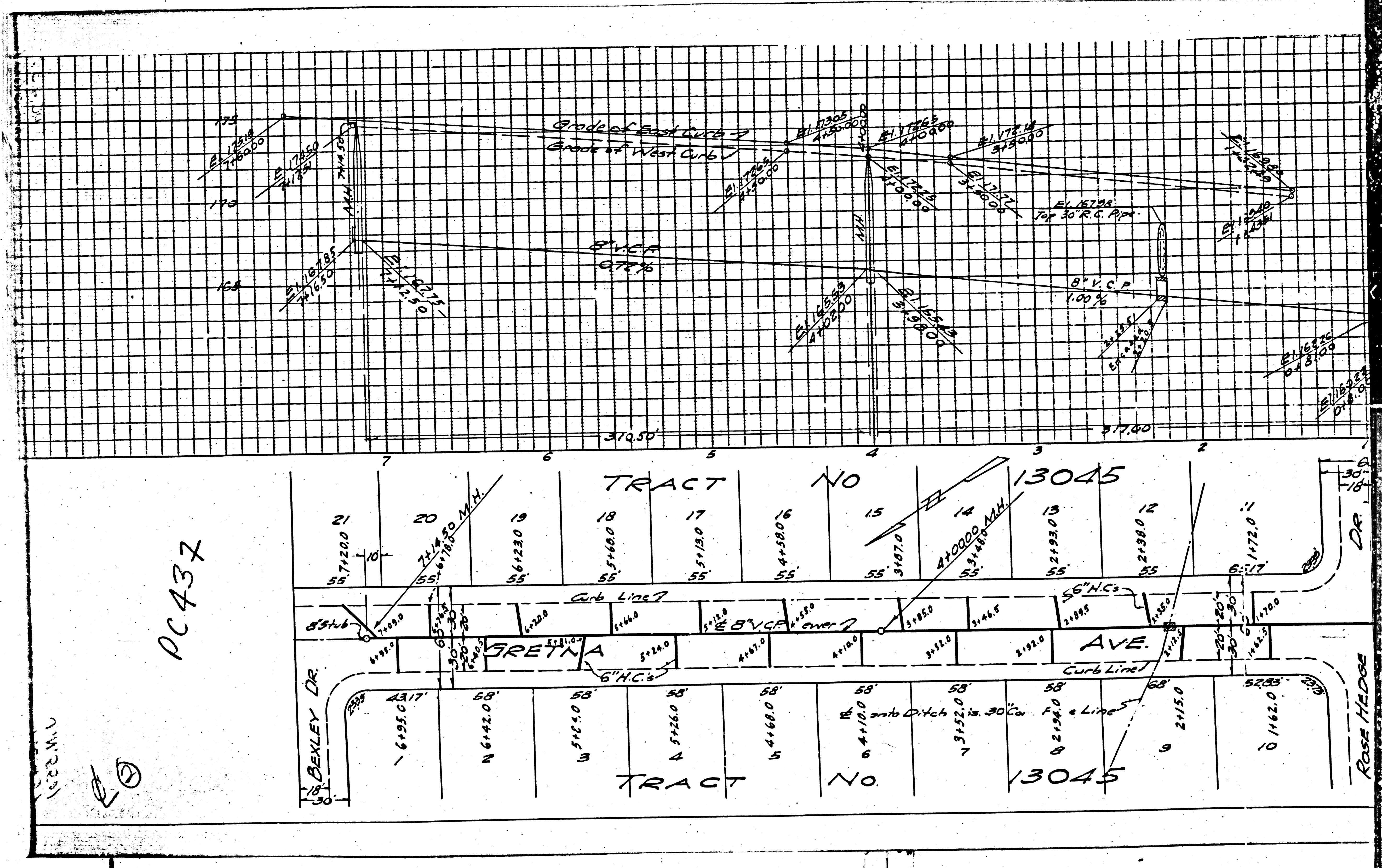
APPROVED *John M. Kemmerer*  
 COUNTY ENGINEER

APPROVED *Carl L. Brown*  
 CHIEF ENGINEER OF COUNTY SANITATION DISTRICT NO. 2

CHECKED BY *Arthur J. Jones* 10/17/1946  
 OFFICE OF COUNTY ENGINEER,  
 REG. C.E. NO. 6330



Final Ck. T.R.P. 5/1/47



PC437

1/22/21

M6