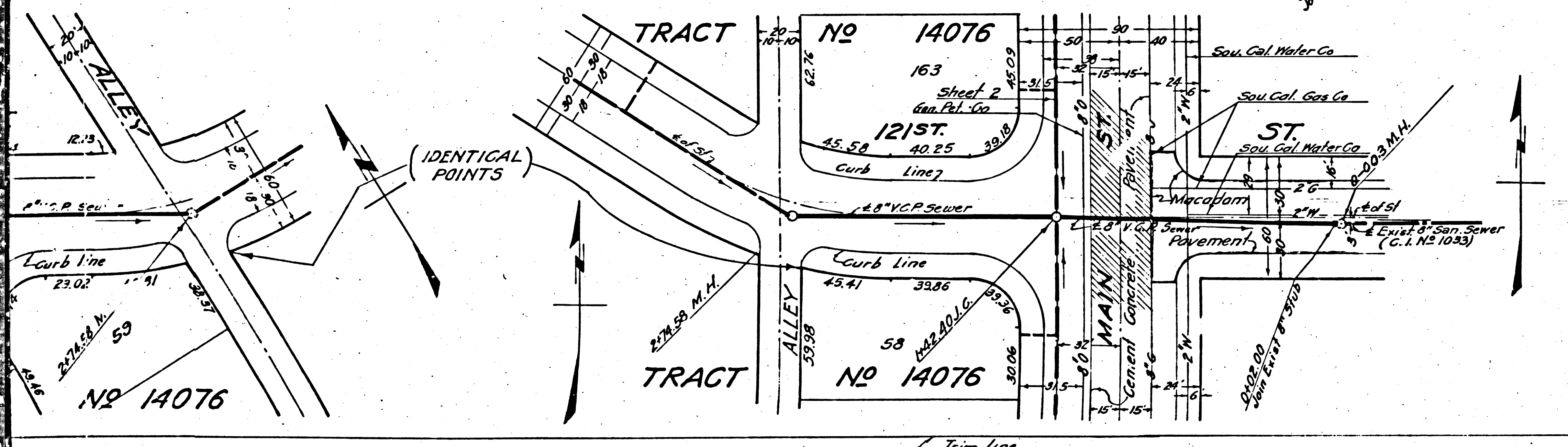


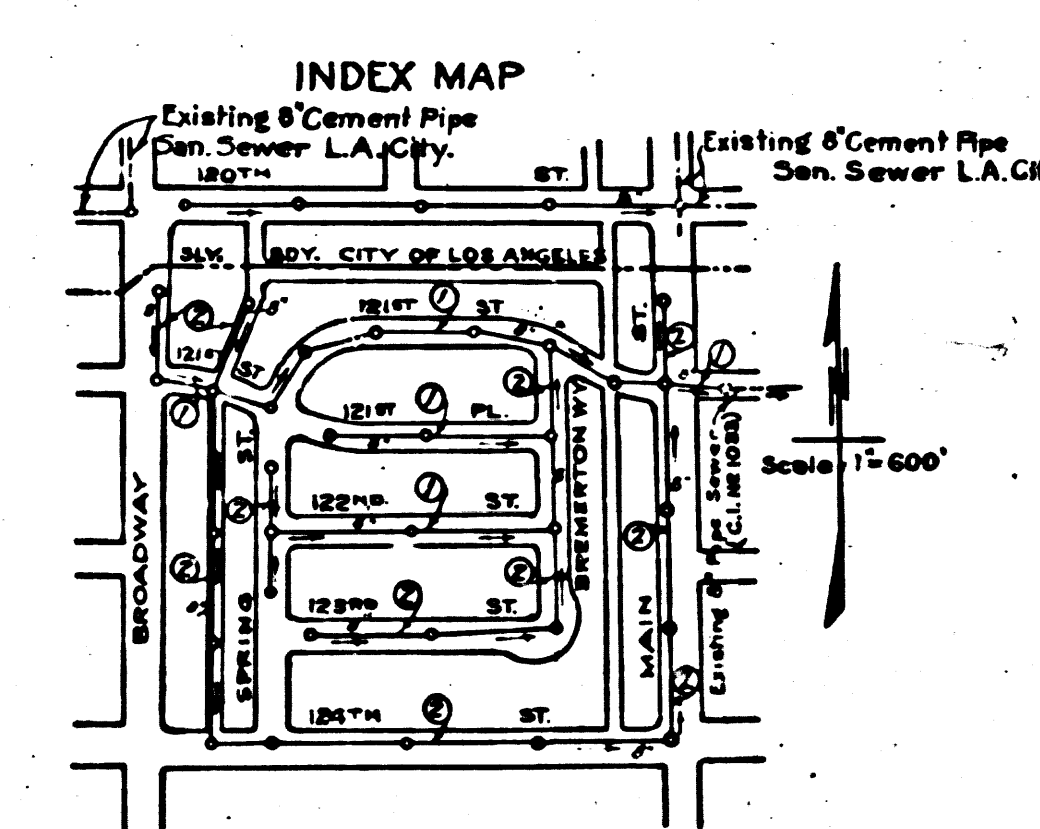
DOUBLE SCALE

USE STANDARD MANHOLE FRAMES AND COVERS S-8-117
 USE STANDARD STRENGTH PIPE (EXCEPT AS NOTED)
 USE CEMENT MORTAR FOR ALL VITRIFIED CLAY PIPE JOINTS.
 RESURFACE ALL TRENCH WITHIN PAVED AREA TO MEET LOS ANGELES COUNTY ROAD DEPT. OR CALIFORNIA STATE HIGHWAY REQUIREMENTS.
 CONSTRUCT HOUSE CONNECTIONS WITH INVERT AT PROPERTY LINE (5) FEET BELOW CURB GRADE.
 ALL STRUCTURES SHALL BE BRICK SEWER STRUCTURES, S-8-104.

PROFILE, ALIGNMENT AND GRADE OF
SANITARY SEWERS
 TO BE CONSTRUCTED IN
121ST STREET
 BETWEEN A POINT 100 FEET EAST OF MAIN STREET AND BROADWAY
121ST PLACE
 BETWEEN BREMERTON WAY AND SPRING STREET.
122ND STREET
 BETWEEN BREMERTON WAY AND SPRING STREET.
PRIVATE CONTRACT NO 439
 W.S. 26
SHEET 1 OF 2 SHEETS
 SCALE: VERT. 1"=8' AUGUST 1946
 HORIZ. 1"=40'
 PREPARED IN THE OFFICES OF
KAISER ENGINEERS INC.
John W. Carter
 REG. C.E. NO 3148



NOTE: NO REPRESENTATIVE OF THE COUNTY ENGINEER WILL SURVEY OR LAYOUT ANY PORTION OF THE WORK.
 THE OWNER OR HIS AUTHORIZED REPRESENTATIVE SHALL FURNISH THE COUNTY ENGINEER WITH GRADE SHEETS AND STATIONS OF ALL HOUSE CONNECTIONS AND Y BRANCHES AND SHALL PROVIDE STAKES FOR THEM AT THEIR PROPER LOCATIONS WITH STATIONING PLAINLY MARKED. ANY CHANGE OF LOCATION SHALL BE REQUESTED IN WRITING BY THE OWNER OR HIS REPRESENTATIVE.
 NO REVISIONS SHALL BE MADE IN THESE PLANS WITHOUT APPROVAL OF THE COUNTY ENGINEER.



FOR LEGEND
 SEE PLAN NO S-8-64

NOTE: GRADES TO WHICH THIS IMPROVEMENT IS TO BE CONSTRUCTED ARE SHOWN ON PLANS AND PROFILE. GRADE POINTS FOR TOP OF CURB, CENTER LINE OF STREET OR CENTER LINE OF ALLEY ARE SHOWN BY CIRCLES ON PROFILES. AT ALL POINTS BETWEEN DESIGNATED POINTS THE GRADE SHALL BE ESTABLISHED SO AS TO CONFORM TO A STRAIGHT LINE DRAWN BETWEEN SAID DESIGNATED POINTS. ELEVATIONS ARE IN FEET ABOVE U.S.S. DATUM OR MEAN SEA LEVEL.
 THIS DRAWING AND THE DATA HEREON ARE HEREBY MADE A PART OF THE SPECIFICATIONS. WORK SHALL BE CONSTRUCTED ACCORDING TO SPECIFICATIONS ON FILE IN THE OFFICE OF THE COUNTY ENGINEER, AND SHALL BE PROSECUTED ONLY IN THE PRESENCE OF THE COUNTY ENGINEER.
 BEFORE WORK CAN BE STARTED, THE CONTRACTOR MUST OBTAIN A PERMIT TO EXCAVATE IN COUNTY STREETS FROM THE L.A. CO. ROAD DEPT., 1104 HALL OF RECORDS, AND MAKE A DEPOSIT WITH THE COUNTY ENGINEER, 700 FASHION LEAGUE BUILDING, SUFFICIENT TO COVER THE COST OF CONSTRUCTION INSPECTION AND RECORD PLANS.
 IF WORK IS TO BE DONE IN A STATE HIGHWAY, A PERMIT MUST BE OBTAINED FROM THE STATE OF CALIFORNIA, DIVISION OF HIGHWAYS, 805 STATE BUILDING AFTER MAKING THE DEPOSIT WITH THE COUNTY ENGINEER.

COUNTY OF LOS ANGELES, CALIFORNIA

APPROVED *Edmund*
 CHIEF COUNTY ENGINEER

APPROVED *Carroll*
 CHIEF ENGINEER OF COUNTY SANITATION DISTRICT NO 1

CHECKED BY *John W. Carter* Mar 10 1947
 OFFICE OF COUNTY ENGINEER REG. C.E. NO 3148

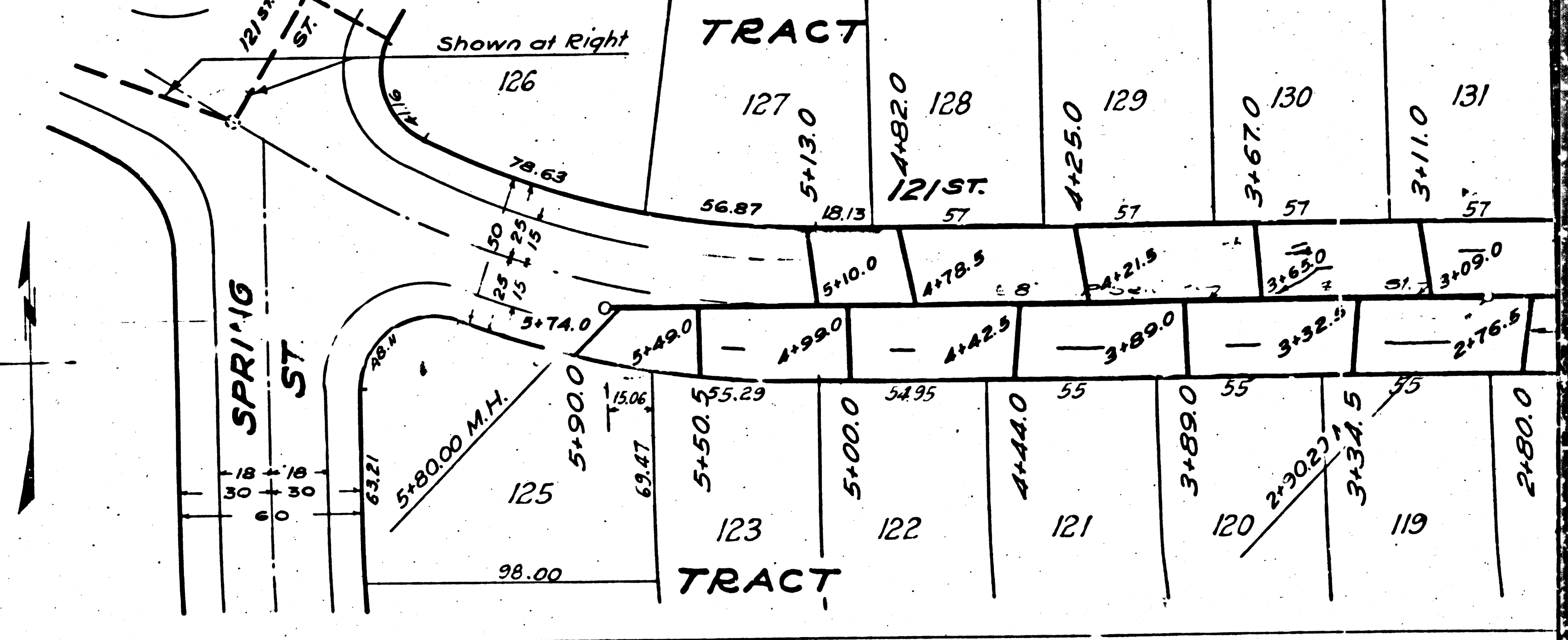
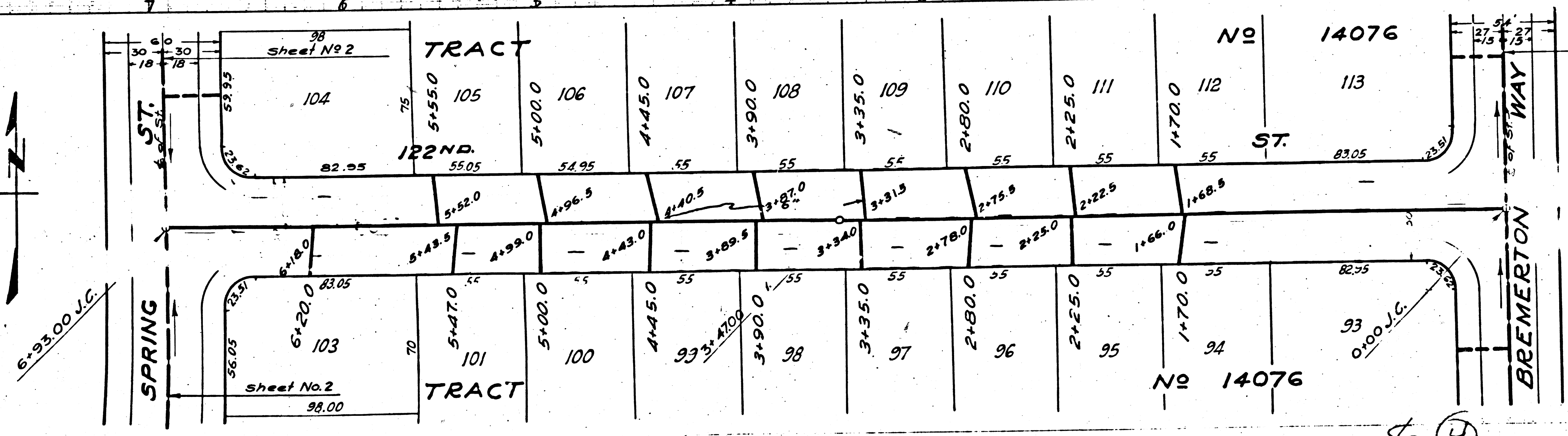
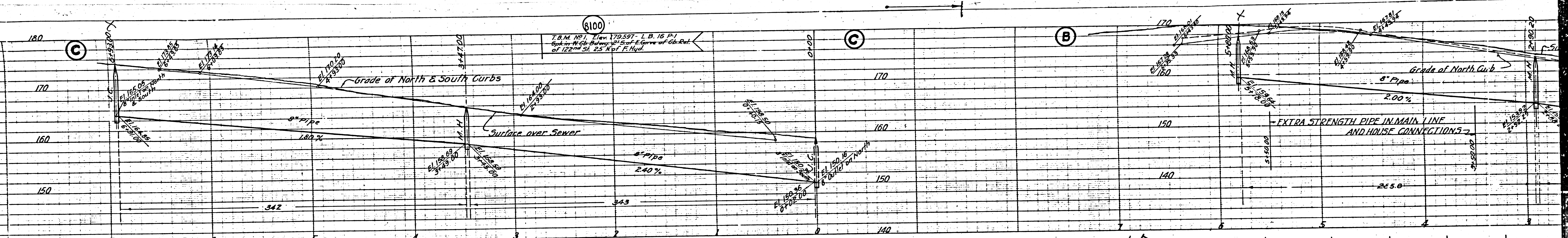
REVISION CHECKED BY *J. M. Moore* OCT 14 1947
 OFFICE OF COUNTY ENGINEER REG. C.E. NO 6322

Final CK T.T.P. 10/5/48

PC 439

EO

T.B.M. No. 1, Elev. 179.581 - L.B. 16 P. 1
 Spk. W. 50' Below 21' S of E. Corner of Ch. Plat.
 of 122nd St. 25' N of E. Hd.



④
 14076