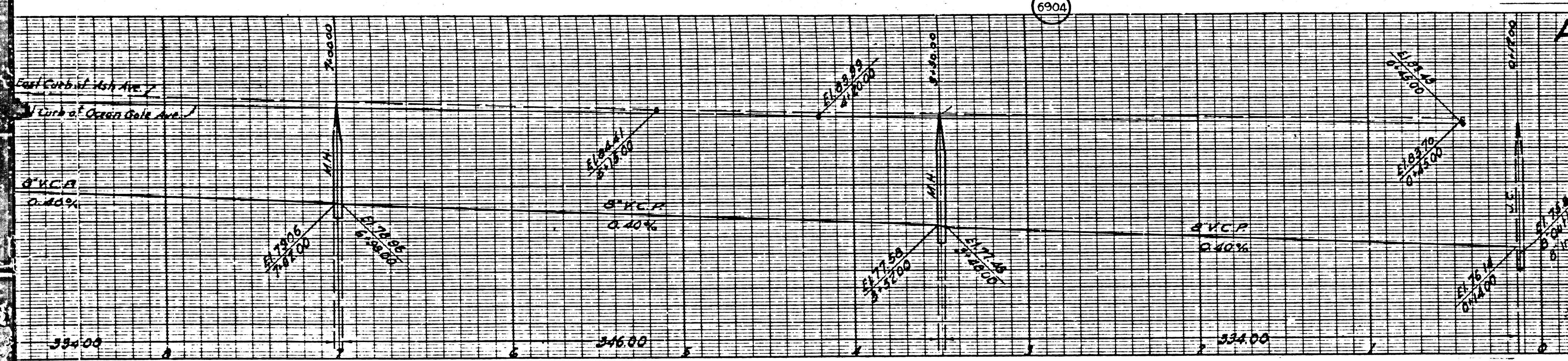


6904



PROFILE, ALIGNMENT AND GRADE OF
SANITARY SEWERS
 TO BE CONSTRUCTED IN

SANITARY SEWER RIGHTS OF WAY
 IN TRACT NO 12455 M.B.

PRIVATE CONTRACT NO. 440
 W.S. 24
 SHEET 2 OF 2 SHEETS

PREPARED IN THE OFFICES OF
ADAMS & ELLS
 BY *[Signature]*
 REG. C.E. NO. 617

FOR LEGEND
 SEE PLAN NO. 9-64

FOR CONSTRUCTION NOTES SEE SHEET 1
 COUNTY OF LOS ANGELES, CALIFORNIA

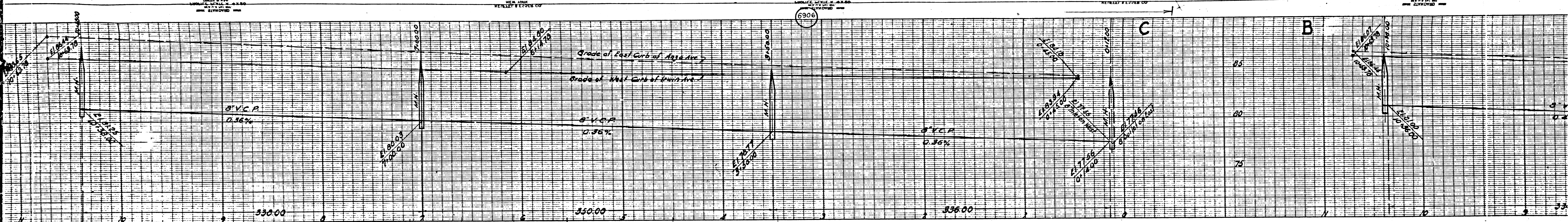
APPROVED *[Signature]*
 COUNTY ENGINEER
 APPROVED *[Signature]*
 CIVIL ENGINEER
 LICENSE NO. 1047

CHECK

OCEAN GATE AVE.															
116	115	114	113	112	111	110	109	108	107	106	105	104	103	102	101
8+44.1	7+99.0	7+37.2	6+85.0	6+34.3	5+90.5	5+25.7	4+76.5	4+23.3	3+69.8	3+19.3	2+65.4	2+11.8	1+60.6	1+06.8	0+56.8
32.30	32.30	32.30	32.30	32.30	32.30	32.30	32.30	32.30	32.30	32.30	32.30	32.30	32.30	32.30	32.30
8+41.6	7+93.5	7+39.7	6+82.5	6+31.8	5+78.0	5+24.2	4+74.0	4+25.8	3+72.2	3+21.8	2+68.0	2+15.8	1+63.1	1+09.3	0+58.1
35	36	37	38	39	40	41	42	43	44	45	46	47	48	49	50
8" V.C.P. Sewer (ASH AVE)															

Final Ck. T.T.P. 4/10/27

Trim Line



ST.	TRACT	ST.	TRACT
40	TRACT	30	(IRWIN AVE)
39	TRACT	29	TRACT
38	TRACT	28	TRACT
37	TRACT	27	TRACT
36	TRACT	26	TRACT
35	TRACT	25	TRACT
34	TRACT	24	TRACT
33	TRACT	23	TRACT
32	TRACT	22	TRACT
31	TRACT	21	TRACT
30	TRACT	20	TRACT
29	TRACT	19	TRACT
28	TRACT	18	TRACT
27	TRACT	17	TRACT
26	TRACT	16	TRACT
25	TRACT	15	TRACT
24	TRACT	14	TRACT
23	TRACT	13	TRACT
22	TRACT	12	TRACT
21	TRACT	11	TRACT
20	TRACT	10	TRACT
19	TRACT	9	TRACT
18	TRACT	8	TRACT
17	TRACT	7	TRACT
16	TRACT	6	TRACT
15	TRACT	5	TRACT
14	TRACT	4	TRACT
13	TRACT	3	TRACT
12	TRACT	2	TRACT
11	TRACT	1	TRACT
10	TRACT	0	TRACT
9	TRACT		TRACT
8	TRACT		TRACT
7	TRACT		TRACT
6	TRACT		TRACT
5	TRACT		TRACT
4	TRACT		TRACT
3	TRACT		TRACT
2	TRACT		TRACT
1	TRACT		TRACT

SEWER RIGHT OF WAY

(ANZA AVE)

No 12455

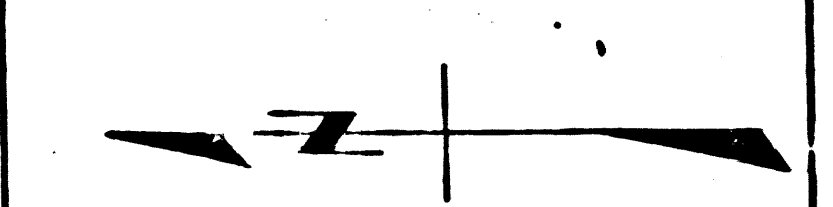
No 12455

104TH ST

101ST ST

TRACT

TRACT



10

6899 A

Block Mark 12455 West Side of Work
to House 15043 North Side of Century
Ave. 50' West of & of Felton Ave.
Elev. 89.20

1. USE STANDARD MANHOLE FRAMES AND COVERS 30x42, EXCEPT AS NOTED.
 2. USE STANDARD STRENGTH PIPE, EXCEPT AS NOTED.
 3. USE CEMENT MORTAR FOR ALL VITRIFIED CLAY PIPE JOINTS.
 4. RESURFACE ALL TRENCH WITHIN PAVED AREA TO MEET LOS ANGELES COUNTY ROAD DEPT. REQUIREMENTS.
 5. CONSTRUCT HOUSE CONNECTIONS WITH INVERTS AT PROPERTY LINE 4 FEET BELOW CURB GRADE.
 6. INCASE FOUR FEET OF SEWER AT POINTS OF INTERFERENCE WITH POLES AS PER S. 106.
 7. ALL STRUCTURES SHALL BE BRICK SEWER STRUCTURES 30x42.
 8. CONSTRUCT TOPS OF ALL STRUCTURES IN RIGHTS OF WAY 6" ABOVE FINISHED GRADE.
- NOTE: NO REPRESENTATIVE OF THE COUNTY ENGINEER WILL SURVEY OR LAY OUT ANY PORTION OF THE WORK.
THE OWNER OR HIS AUTHORIZED REPRESENTATIVE SHALL FURNISH THE COUNTY ENGINEER WITH GRADE SHEETS AND STATIONS OF ALL HOUSE CONNECTIONS AND Y BRANCHES AND SHALL PROVIDE STAKES FOR THEM AT THEIR PROPER LOCATIONS WITH STATIONING PLAINLY MARKED. ANY CHANGE OF LOCATION SHALL BE REQUESTED IN WRITING BY THE OWNER OR HIS REPRESENTATIVE.
NO REVISIONS SHALL BE MADE IN THESE PLANS WITHOUT APPROVAL OF THE COUNTY ENGINEER.

PROFILE, ALIGNMENT AND GRADE OF
SANITARY SEWERS
TO BE CONSTRUCTED IN
104TH ST.
BETWEEN FELTON AVE. AND ANZA AVE.
SANITARY SEWER RIGHTS OF WAY
IN TRACT NO. 12455
101ST ST.
BETWEEN OCEAN GATE AVE. AND FELTON AVE.

PRIVATE CONTRACT NO. 440
W.S. 24
SHEET 1 OF 2 SHEETS

PREPARED IN THE OFFICES OF
ADAMS & ELLS

BY: *J. Adams*
REG. C.E. NO. 617
FOR LEGEND
SEE PLAN NO. 4-C4

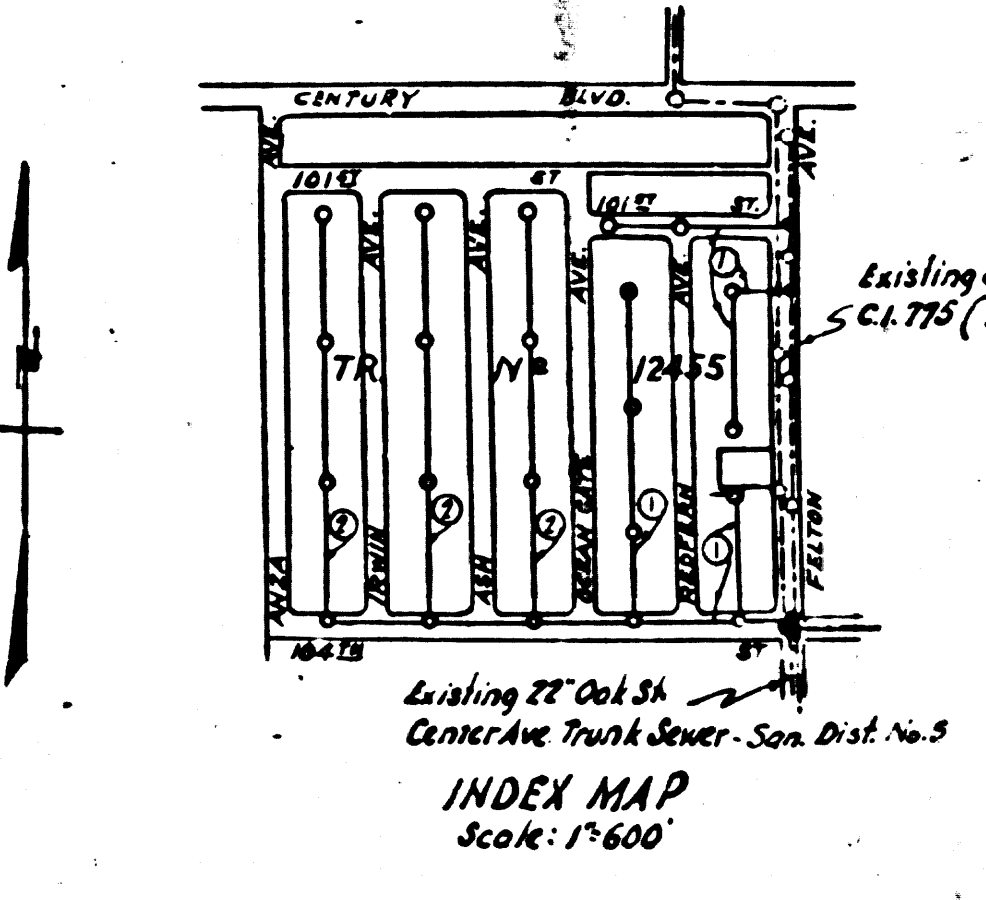
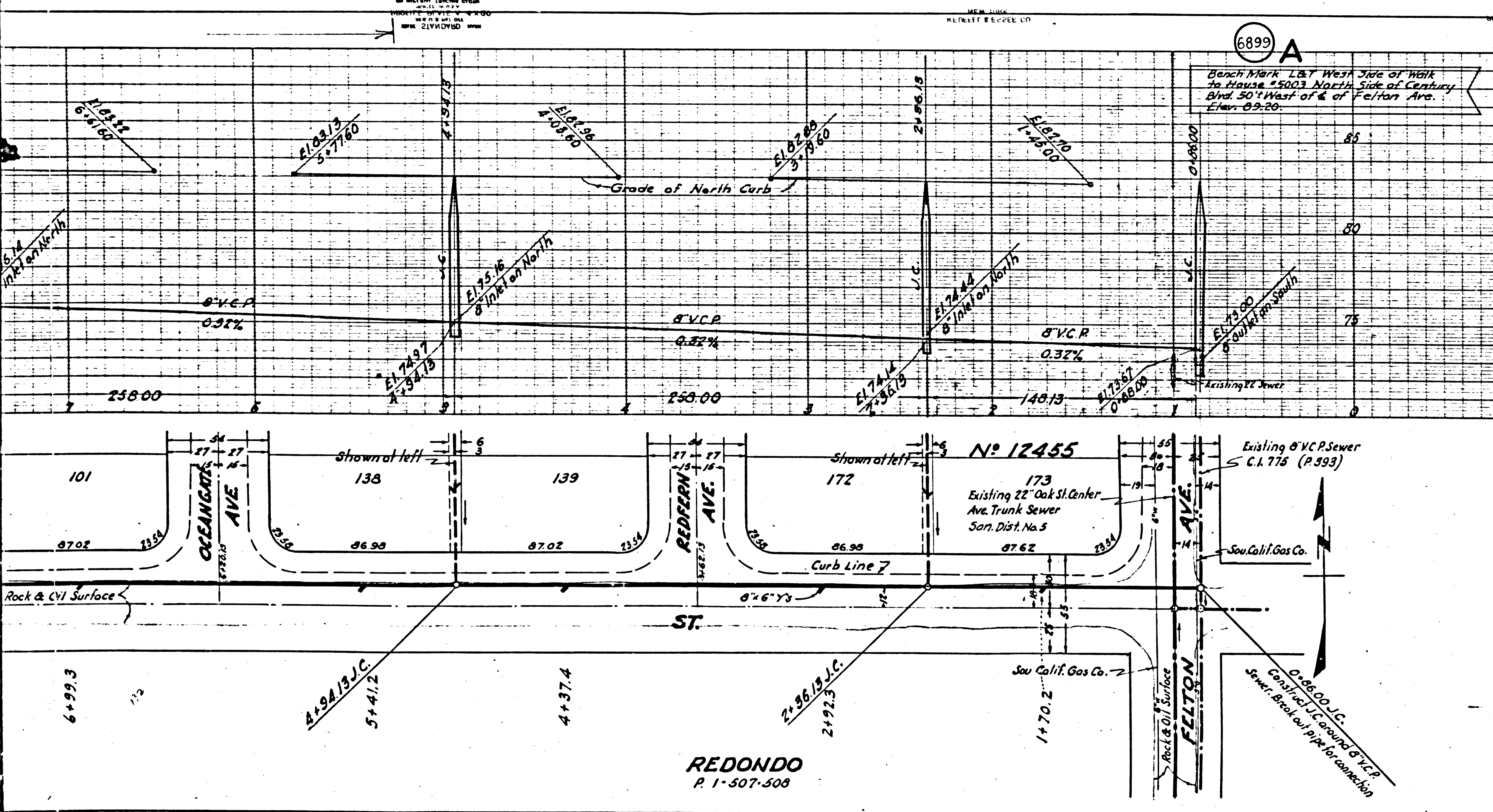
NOTE:
GRADES TO WHICH THIS IMPROVEMENT IS TO BE CONSTRUCTED ARE SHOWN ON PLANS AND PROFILES. AT ALL POINTS BETWEEN DESIGNATED POINTS THE GRADE SHALL BE ESTABLISHED SO AS TO FORM TO A STRAIGHT LINE DRAWN BETWEEN SAID DESIGNATED POINTS.
ELEVATIONS ARE IN FEET ABOVE U.S.S. DATUM OR MEAN SEA LEVEL.
THIS DRAWING AND THE DATA HEREON ARE HEREBY MADE A PART OF THE SPECIFICATIONS. WORK SHALL BE CONSTRUCTED ACCORDING TO SPECIFICATIONS ON FILE IN THE OFFICE OF THE ENGINEER AND SHALL BE PROSECUTED ONLY IN THE PRESENCE OF THE COUNTY ENGINEER.
BEFORE WORK CAN BE STARTED THE CONTRACTOR MUST OBTAIN A PERMIT TO EXCAVATE IN COUNTY STREETS FROM THE LA COUNTY ROAD DEPT. 104 HALL OF RECORDS, AND MAKE A DEPOSIT WITH THE COUNTY ENGINEER, 700 PASHAN LEASER BUILDING, SUFFICIENT TO COVER THE COST OF CONSTRUCTION INSPECTOR AND RECORD PLANS.

COUNTY OF LOS ANGELES, CALIFORNIA.

APPROVED: *Alfred Jones*
COUNTY ENGINEER

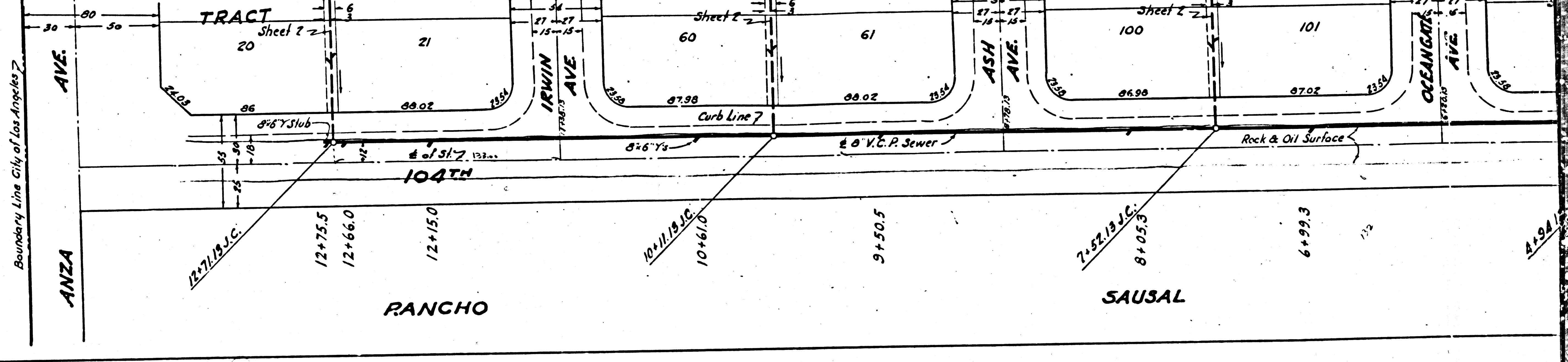
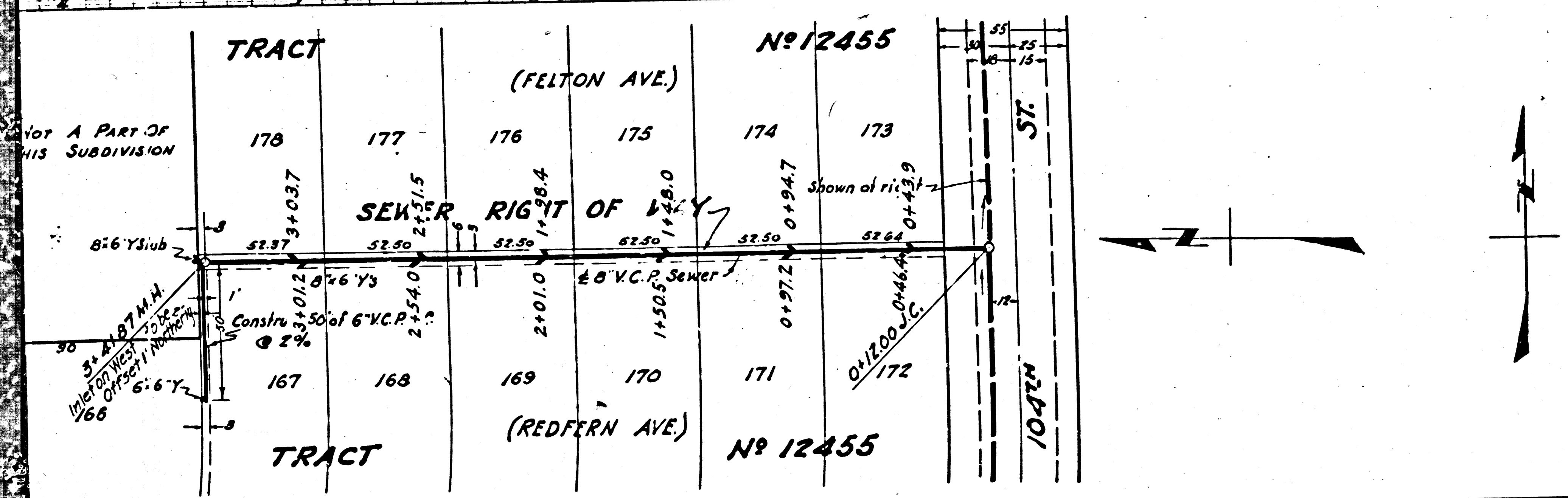
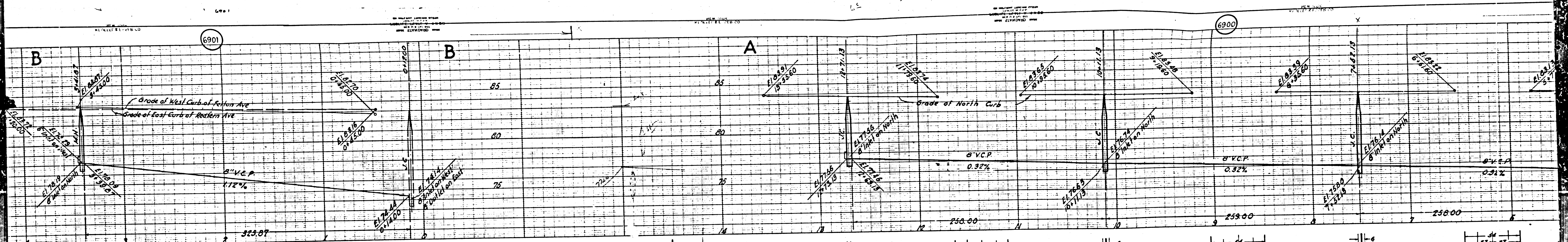
APPROVED: *[Signature]*
CHIEF ENGINEER OF COUNTY SANITATION DISTRICT NO. 12

CHECKED BY: *[Signature]* 12/12/1946
OFFICE OF COUNTY ENGINEER, Rm. C.E. NO. 6336



REDONDO
R 1-507-508

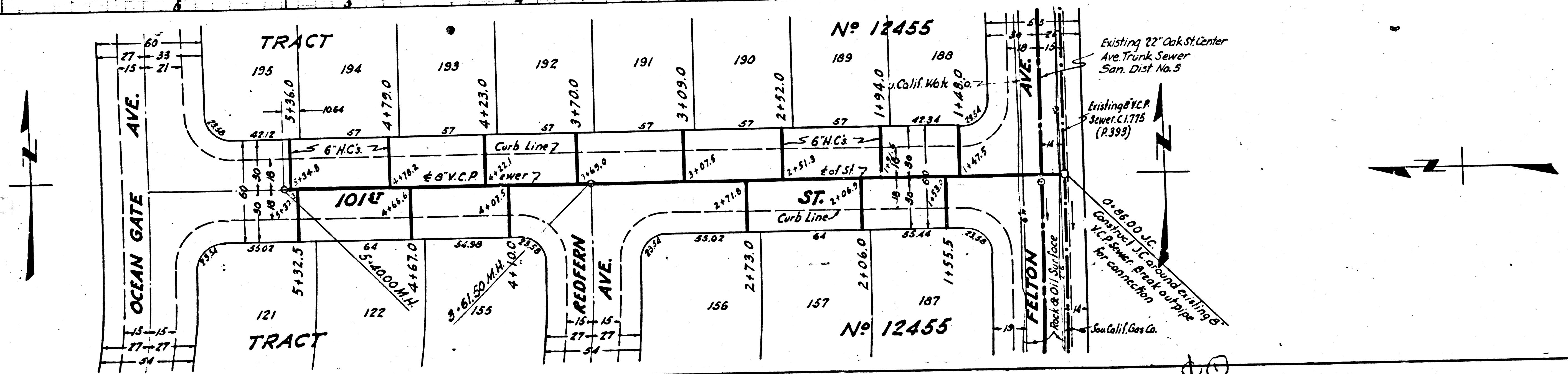
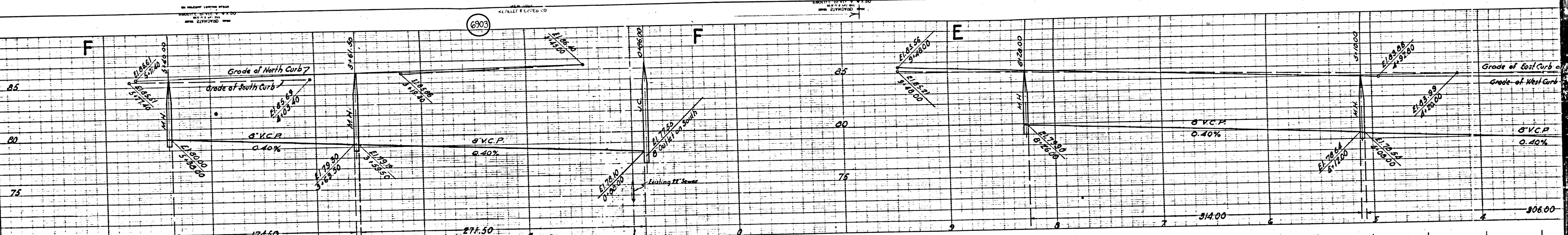
Final Ck. T. 7. 7. 7. 4. 9. 2. 7



TRACT		No 12455	
(FELTON AVE)		(REDFERN AVE)	
178	177	176	175
174	173	172	171
SEWER RIGHT OF WAY			
167	168	169	170
TRACT		No 12455	

6903

6903



TRACT										(REDFERN AVE.)									
154	153	152	151	150	149	148	147	146	145	154	153	152	151	150	149	148	147	146	145
62.60	62.60	62.60	62.60	62.60	62.60	62.60	62.60	62.60	62.60	62.60	62.60	62.60	62.60	62.60	62.60	62.60	62.60	62.60	62.60
8+23.1	7+88.0	7+34.2	6+83.4	6+30.0	5+82.0	5+28.5	4+71.4	4+22.8	3+72.0	8+23.1	7+88.0	7+34.2	6+83.4	6+30.0	5+82.0	5+28.5	4+71.4	4+22.8	3+72.0
TRACT										TRACT									
										SEWER RIGHT OF WAY									
										8\"/>									
										(OCEAN GATE AVE.)									