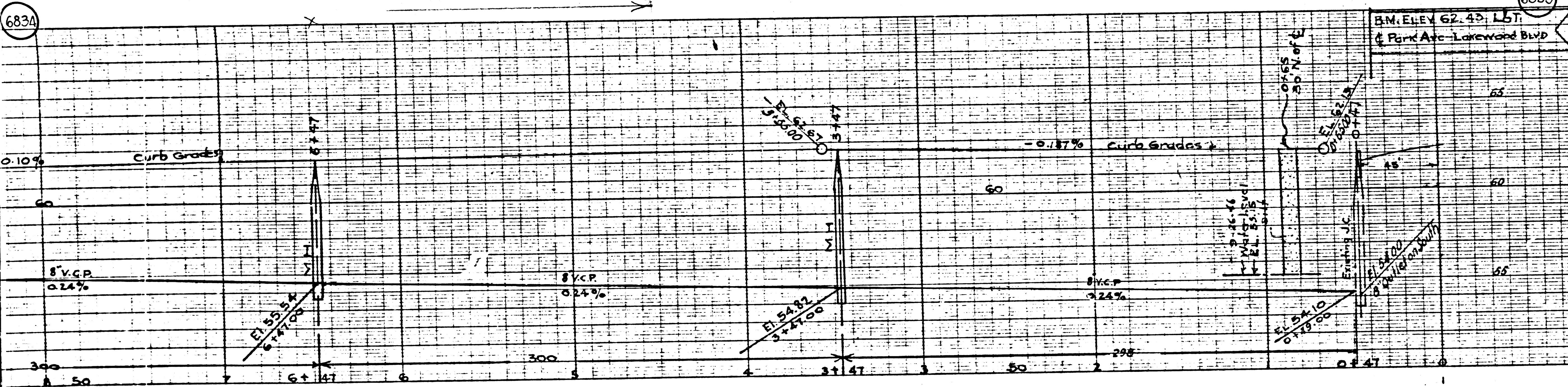


6830

6830



Use standard manhole frames and covers 3' x 17"
 Use standard strength pipe
 Use cement mortar for all vitrified clay pipe joints
 Resurface all trench within paved area to meet Los Angeles County Road Department specifications
 Entake four feet of sewer at points of interference with poles so per S.D.C. construct hose connections with invert of property line 4' below curb grade
 All structures shall be brick sewer structures 15" x 104"

Note: No representative of the County Engineer will survey or by out any portion of the work.
 The owner or his authorized representative shall furnish the County Engineer with grade sheets and stations of all house connections and Y branches and shall provide stakes for them at their proper locations with stationing plainly marked. Any change of location shall be in writing by the owner or his representative.
 No revisions shall be made in the plans without approval of County Engineer.

PROF. ALIGNMENT AND GRADE OF
SANITARY SEWER
 TO BE CONSTRUCTED IN
 PARK AVE.
 BETWEEN LAKEWOOD BLVD. AND PARK AVE. EXT. (UPPER END) (SEE PLAN)

PREPARED IN THE OFFICES OF
 C. E. VOGEL
 COUNTY ENGINEER
 REG. S. E. NO. 3287

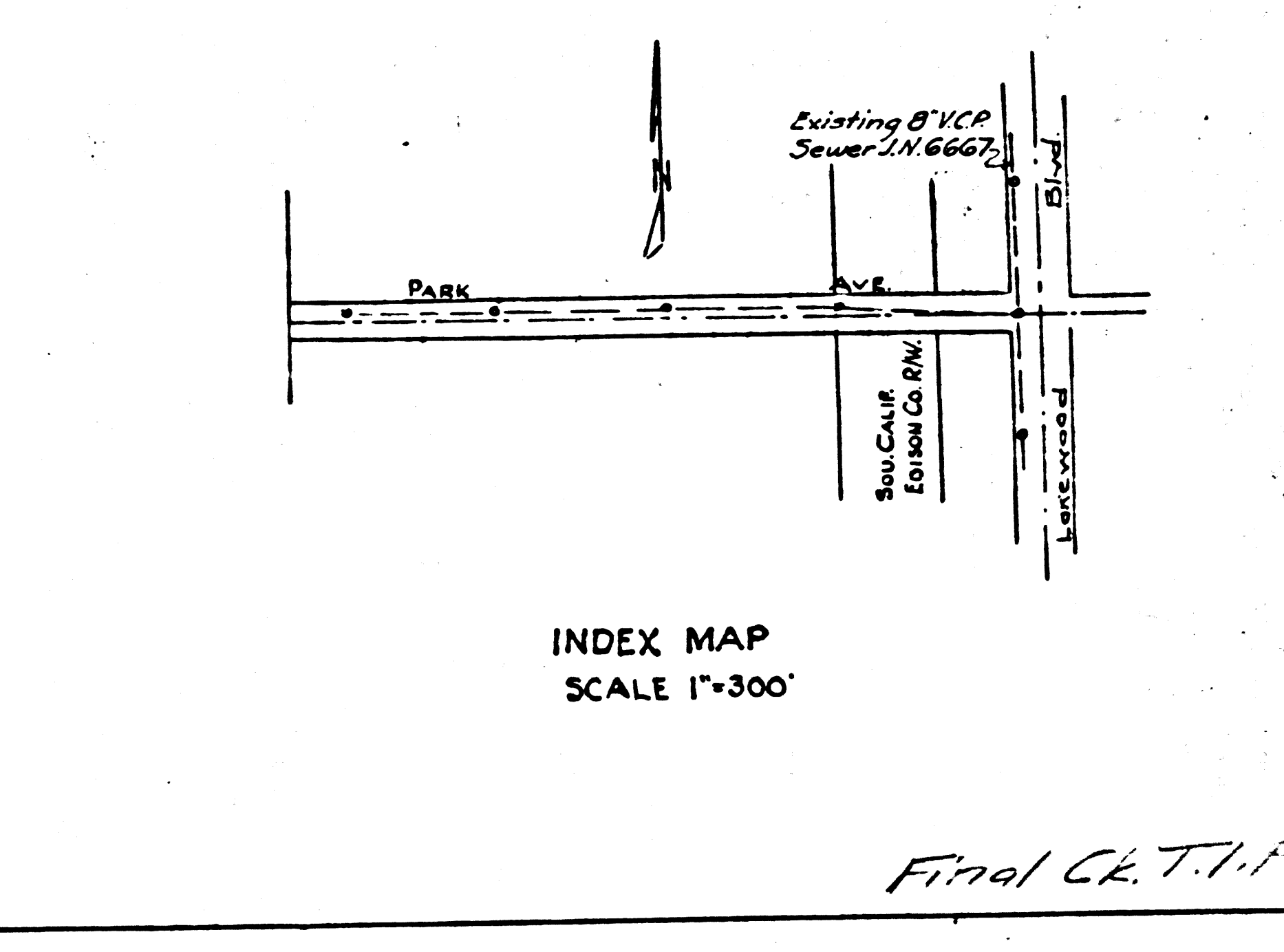
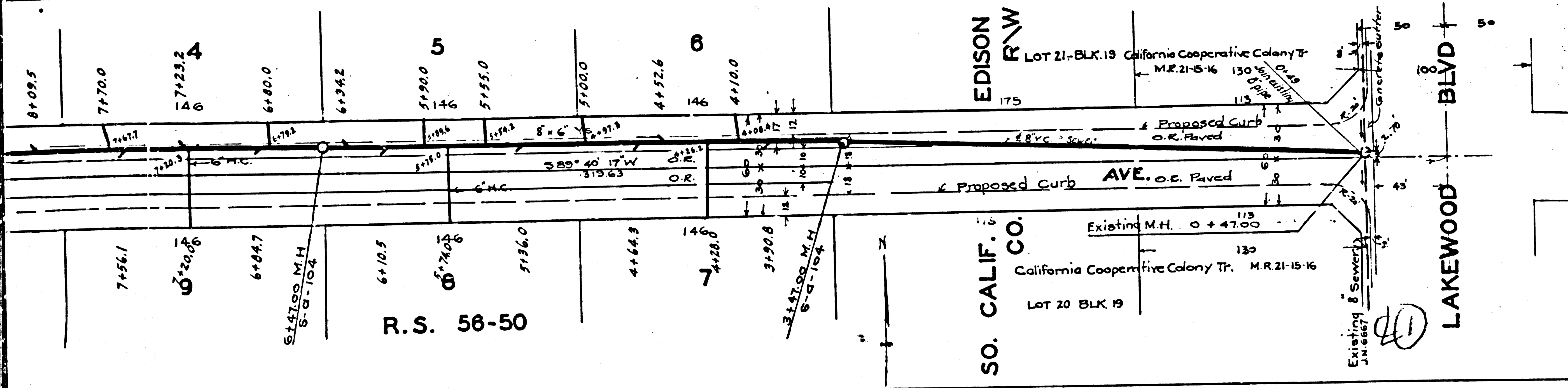
BY
 C. E. VOGEL
 REG. S. E. NO. 3287

PRIVATE CONTRACT NO. 441
 FOR LEGEND
 SEE PLAN SHEET NO. 441

Note: Grades for this improvement shall be constructed on a minimum of 12" below grade points for top of curb, bottom of sewer, and established surface to conform to the straight line drawn between said points.
 This drawing and the data hereon are hereby made a part of the specifications. Work shall be constructed according to specifications on file in the office of the County Engineer and shall be prosecuted only in the presence of the County Engineer.
 Before work can be started, the contractor must make deposit with the County Engineer a 700 Union League Building, sufficient to cover the cost of construction inspection and record plan. If work is to be done in a State Highway, a permit must be obtained from the State Highway Division of Highways, 208 State Building after making the deposit with the County Engineer.

SCALE VERT. 1" = 4'
 HORIZ. 1" = 40'

OCT. 1946



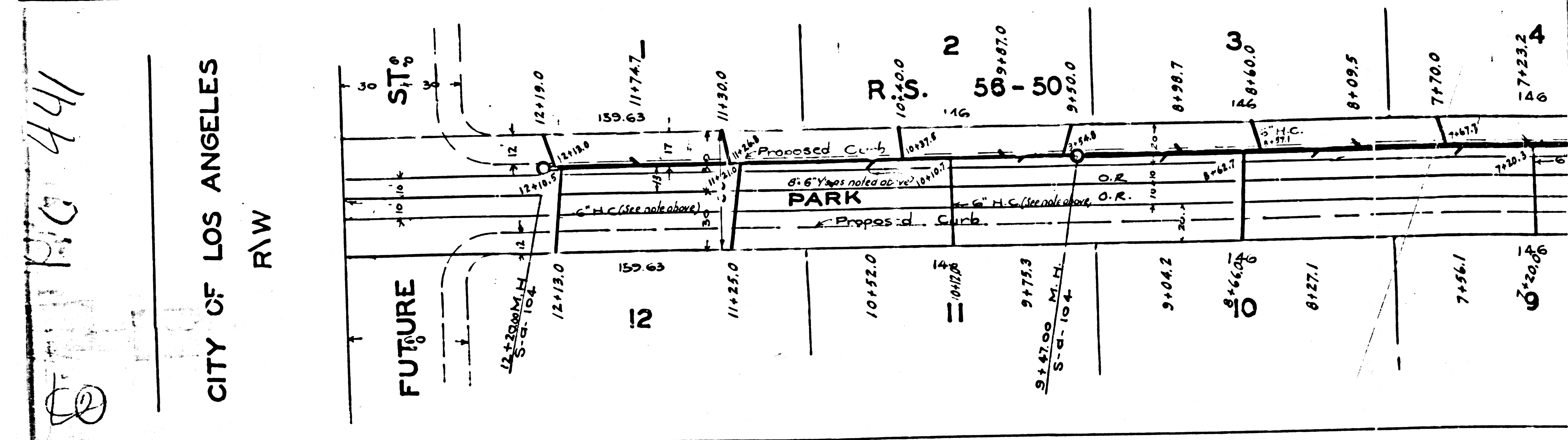
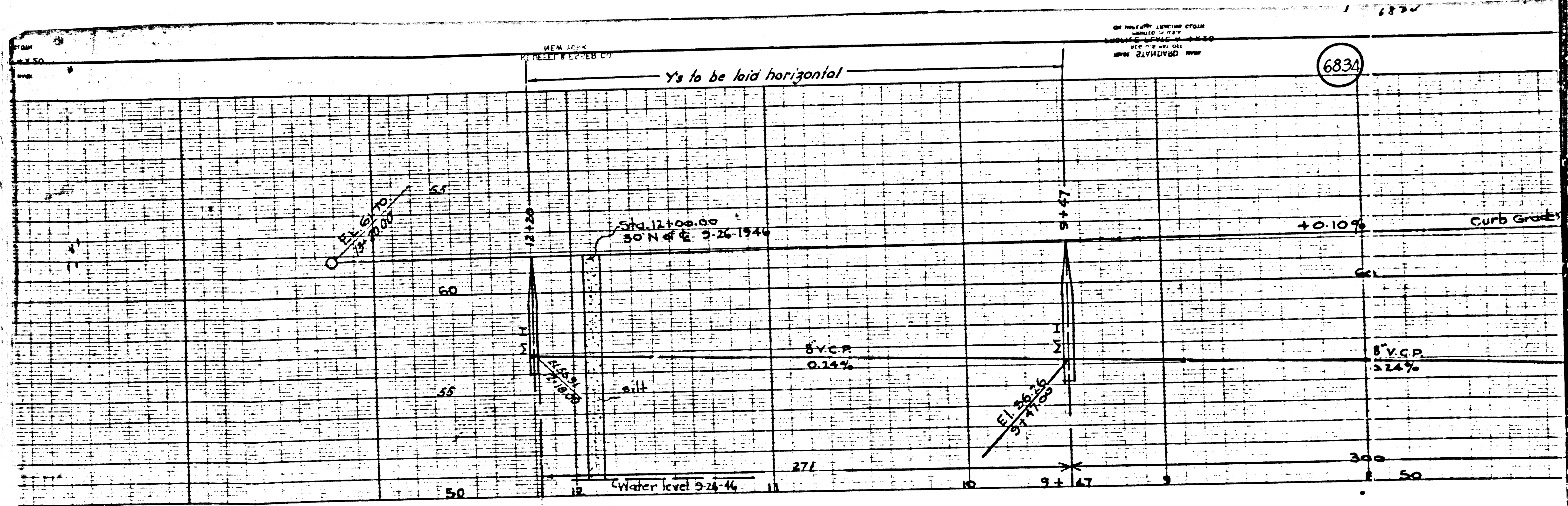
COUNTY OF LOS ANGELES CALIFORNIA

APPROVED *W. J. D. Jones*
 COUNTY ENGINEER

APPROVED *C. E. Vogel*
 CHIEF ENGINEER OF COUNTY
 SANITATION DISTRICT NO. 5

CHECKED BY *W. J. D. Jones* 10/17/1946
 OFFICE OF COUNTY ENGINEER, ROOM 150

Final C.E.T.I.P. 2/10/47



144
 144
 144
 144
 144

CITY OF LOS ANGELES
 R/W

FUTURE
 SIT^g

PARK

| | | | | | | | | |
|---------|---------|---------|--------|--------|--------|--------|--------|--------|
| 12+19.0 | 11+25.0 | 10+52.0 | 9+75.3 | 9+04.2 | 8+66.0 | 8+27.1 | 7+56.1 | 7+23.2 |
| 12+19.0 | 11+25.0 | 10+52.0 | 9+75.3 | 9+04.2 | 8+66.0 | 8+27.1 | 7+56.1 | 7+23.2 |
| 12+19.0 | 11+25.0 | 10+52.0 | 9+75.3 | 9+04.2 | 8+66.0 | 8+27.1 | 7+56.1 | 7+23.2 |