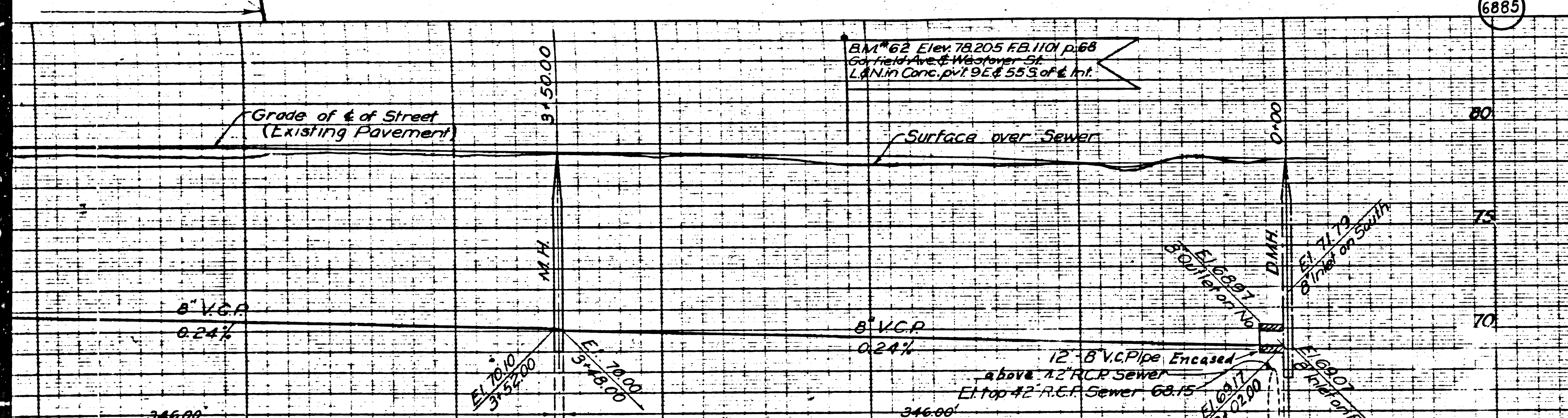


6885
 NEW YORK
 NEW YORK
 NEW YORK



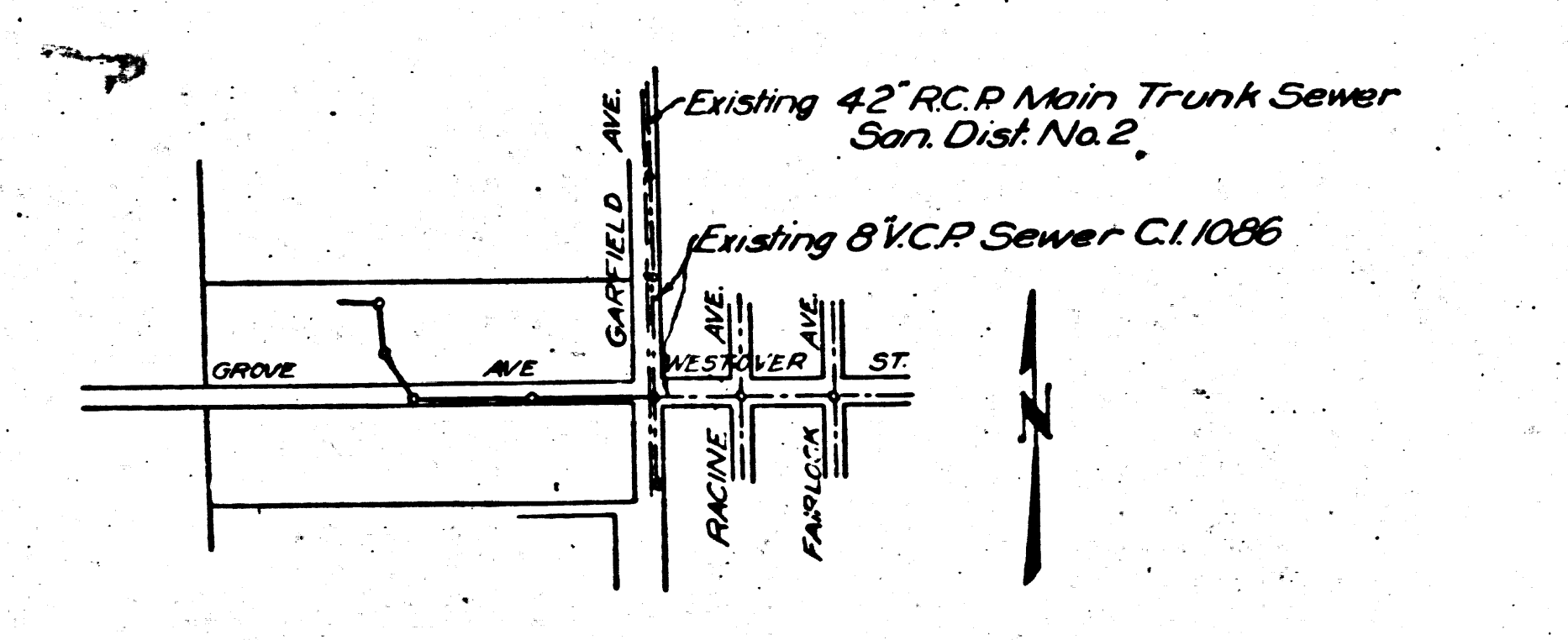
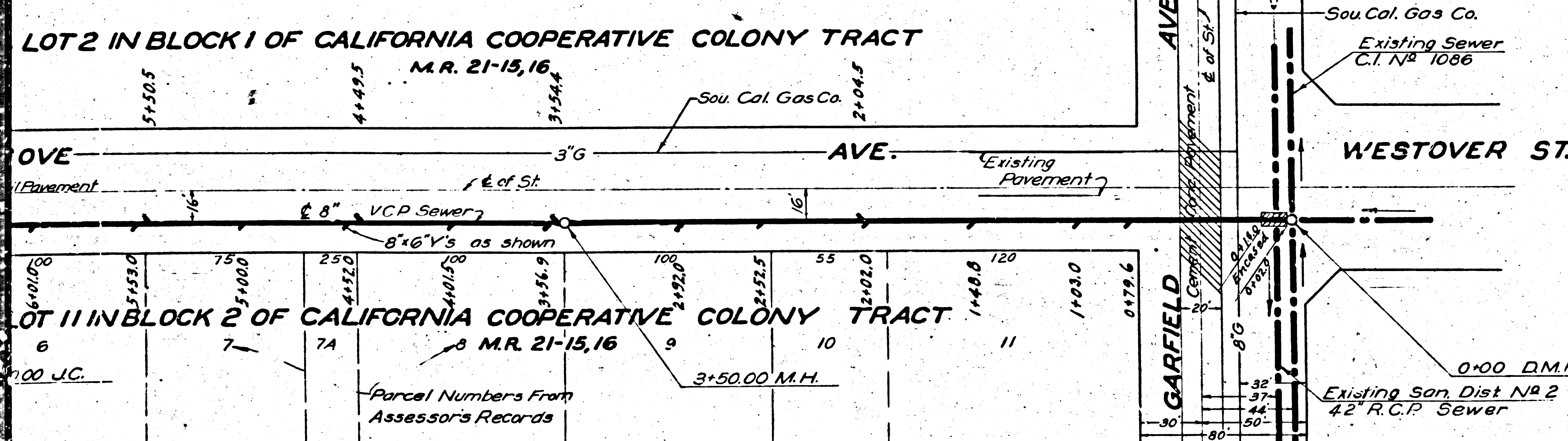
- (1) USE STANDARD MANHOLE FRAMES AND COVERS, S-2-117 (E.C. 51-261)
- (2) USE STANDARD MANHOLE FRAMES AND COVERS, S-2-117 (E.C. 51-261)
- (3) USE STANDARD STRENGTH PIPE (EXCEPT AS NOTED)
- (4) USE CEMENT MORTAR FOR ALL VITRIFIED CLAY PIPE JOINTS
- (5) RESURFACE ALL TRENCH WITHIN PAVED AREAS TO MEET LOS ANGELES COUNTY ROAD DEPT. OR CALIFORNIA STATE HIGHWAY REQUIREMENTS
- (6) ALL STRUCTURES SHALL BE ROCK SEWER STRUCTURES 9-2-104

NOTE:
 NO REPRESENTATIVE OF THE COUNTY ENGINEER WILL SURVEY OR LAY OUT ANY PORTION OF THE WORK.
 THE OWNER OR HIS AUTHORIZED REPRESENTATIVE SHALL FURNISH THE COUNTY ENGINEER WITH GRADE SHEETS AND SHOWN OF ALL HOLES, EXISTING AND PROPOSED, MARKED FOR THE WORK. THESE MARKERS SHALL BE PLACED AT THE PROPER LOCATIONS WITH STATIONING PLAINLY MARKED. ANY CHANGE OF LOCATION SHALL BE REQUESTED IN WRITING BY THE OWNER OR HIS REPRESENTATIVE.
 NO PERSON SHALL REMOVE OR ALTER ANY MARKERS OR PLANS WITHOUT APPROVAL OF THE COUNTY ENGINEER.

**PROFILE, ALIGNMENT AND GRADE OF
 SANITARY SEWERS
 TO BE CONSTRUCTED IN
 GROVE AVE.
 BETWEEN GARFIELD AVE AND A POINT 70
 FEET WEST OF GARFIELD AVE
 GROVE AVE SCHOOL PROJECT**

PRIVATE CONTRACT NO. 442
 W.S. 32
SHEET 1 OF 1 SHEETS
 OCTOBER 2, 1947

PREPARED IN THE OFFICES OF
HAROLD A. BARNETT
 BY: *Harold A. Barnett*
 REG. C.E. NO. 1219



FOR LEGEND
 SEE PLAN NO. S-9-66

NOTE:
 GRADES TO WHICH THIS IMPROVEMENT IS TO BE CONSTRUCTED ARE SHOWN ON PLANS AND PROFILE.
 GRADE POINTS FOR TOP OF CURB, CENTER LINE OF STREET OR CENTER LINE OF ALLEY ARE SHOWN BY CIRCLES ON PROFILES AT ALL POINTS BETWEEN DESIGNATED POINTS. THE GRADE SHALL BE ESTABLISHED SO AS TO CONFORM TO A STRAIGHT LINE DRAWN BETWEEN SAID DESIGNATED POINTS.
 ELEVATIONS ARE IN FEET ABOVE U.S.S. DATUM OR MEAN SEA LEVEL.
 THIS DRAWING AND THE DATA HEREON ARE HEREBY MADE A PART OF THE SPECIFICATIONS.
 WORK SHALL BE CONSTRUCTED ACCORDING TO SPECIFICATIONS ON FILE IN THE OFFICE OF THE COUNTY ENGINEER AND SHALL BE PROSECUTED ONLY IN THE PRESENCE OF THE COUNTY ENGINEER.
 BEFORE WORK CAN BE STARTED THE CONTRACTOR MUST OBTAIN A PERMIT TO EXCAVATE IN COUNTY STREETS FROM THE L.A. COUNTY ROAD DEPT. HEADQUARTERS OF RECORDS, AND MAKE A DEPOSIT WITH THE COUNTY ENGINEER, TO FURNISH LEADS AND BUILDS, SUBJECT TO COVER THE COST OF CONSTRUCTION OF INSPECTION AND RECORD PLANS.
 IF WORK IS TO BE DONE IN A STATE BUILDING, A PERMIT MUST BE OBTAINED FROM THE STATE OF CALIFORNIA, DIVISION OF HIGHWAYS, FOR STATE BUILDINGS, AFTER MAKING THE DEPOSIT WITH THE COUNTY ENGINEER.
 COUNTY OF LOS ANGELES, CALIFORNIA

APPROVED: *[Signature]*
 APPROVED: *[Signature]*
 CHECKED BY: *[Signature]*
 OFFICE OF COUNTY ENGINEER, REG. C.

Final C.T.P. 4/2/47

442
 S-9-66

