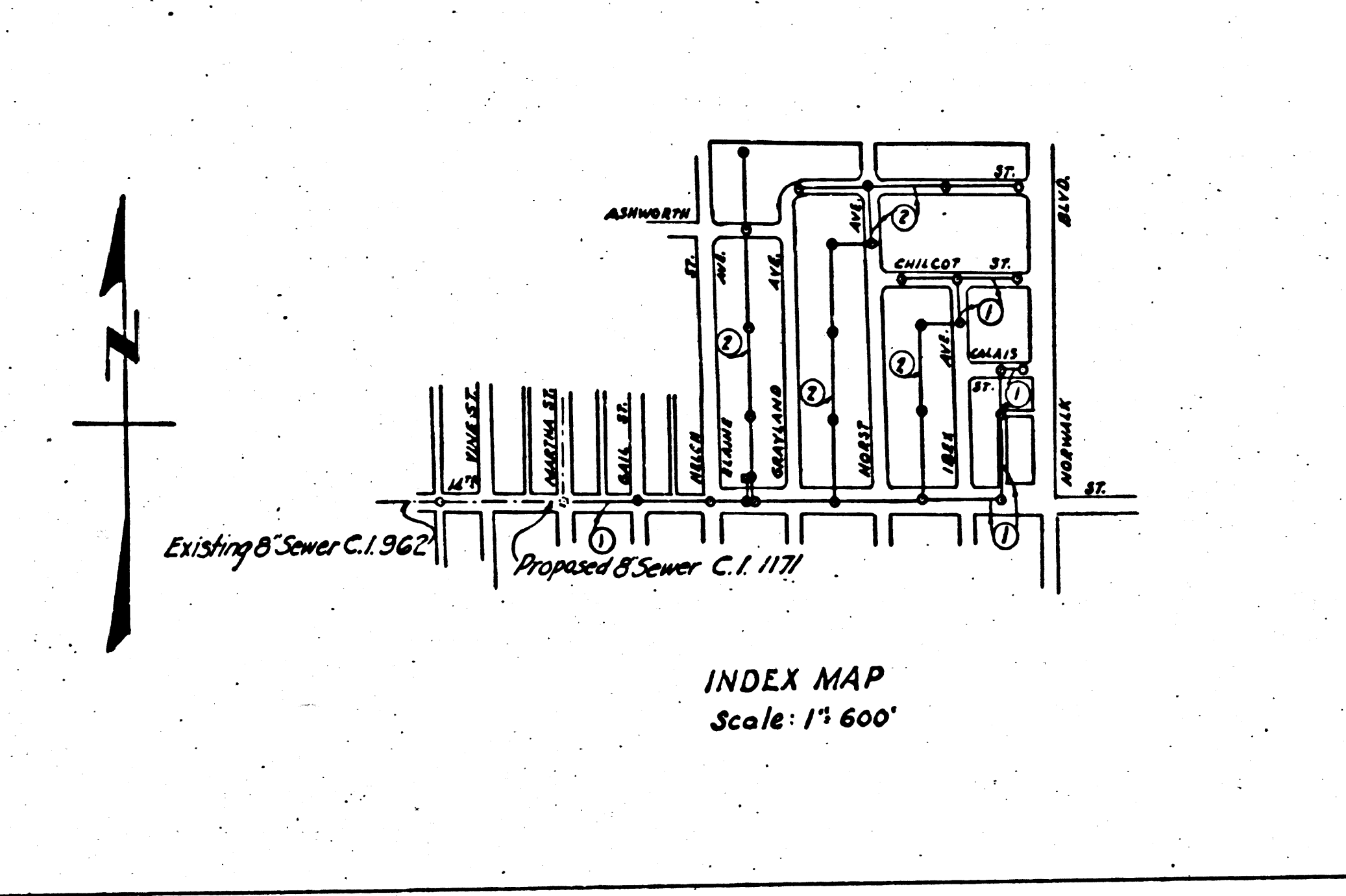
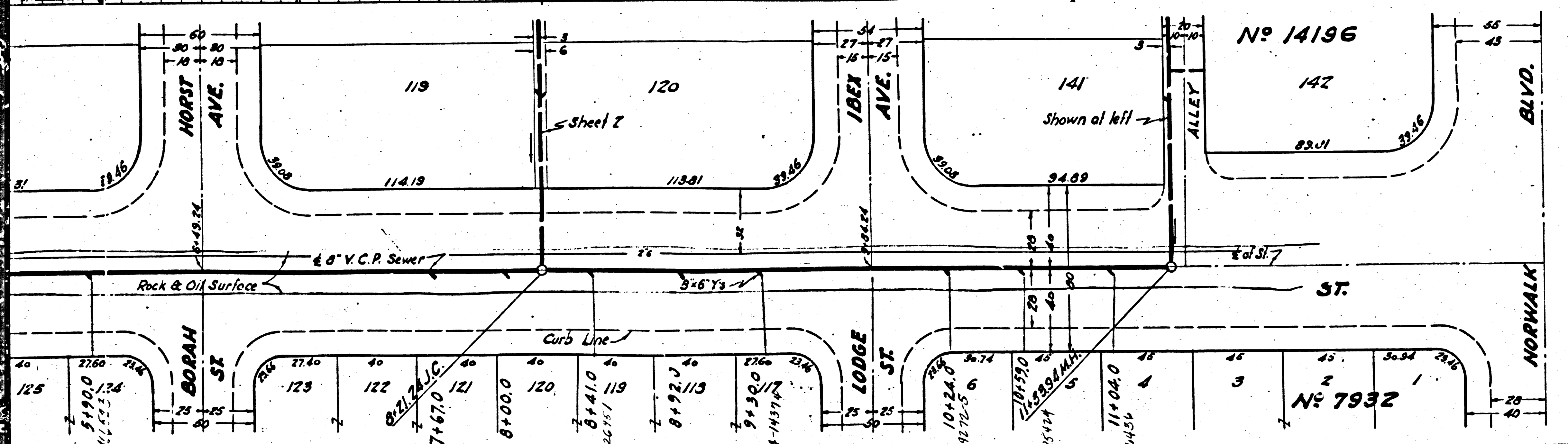


1. USE STANDARD MANHOLE FRAMES AND COVERS S-17.
 2. USE STANDARD STRENGTH PIPE.
 3. USE CEMENT MORTAR FOR ALL VITRIFIED CLAY PIPE JOINTS.
 4. RESURFACE ALL TRENCH WITHIN PAVED AREA TO MEET LOS ANGELES COUNTY ROAD DEPT. REQUIREMENTS.
 5. CONSTRUCT HOUSE CONNECTIONS WITH INVERT AT PROPERTY LINE 4 FEET BELOW CURB GRADE.
 6. ENCASE FOUR FEET OF SEWER AT POINTS OF INTERFERENCE WITH POLES AS PER S-6.
 7. ALL STRUCTURES SHALL BE BRICK SEWER STRUCTURES S-10A EXCEPT AS NOTED.
 8. CONSTRUCT TOPS OF ALL STRUCTURES IN RIGHTS OF WAY 6" ABOVE FINISHED GRADE.
- NOTE: No representative of the County Engineer will survey or lay out any portion of work. The owner or his authorized representative shall furnish the County Engineer with grade sheets and stations of all house connections and Y branches and shall provide stakes for them at their proper locations with stationing plainly marked. Any change of location shall be requested in writing by the owner or his representative. No revisions shall be made to these plans without approval of the County Engineer.

PROFILE ALIGNMENT AND GRADE OF
SANITARY SEWERS
 TO BE CONSTRUCTED IN
14TH ST.
 BETWEEN MARTHA ST. AND NORWALK BLVD.
FIRST ALLEY EAST OF IBEX AVE.
 BETWEEN 14TH ST. AND FIRST ALLEY NORTH OF 14TH ST.
SANITARY SEWER RIGHT OF WAY
 IN TRACT NO. 14196
CALAIS ST.
 BETWEEN NORWALK BLVD. AND IBEX AVE.
IBEX AVE.
 BETWEEN CHILCOT ST. AND A POINT 138 FT. SOUTHERLY
CHILCOT ST.
 BETWEEN HORST AVE. AND NORWALK BLVD.
PRIVATE CONTRACT NO. 447
 WS 33 Nov. 1946.
SHEET 1 OF 2 SHEETS
 PREPARED IN THE OFFICE OF
WM. H. FAIR JR.



FOR LEGEND
 SEE PLAN S-6-64

NOTE:
 GRADES TO WHICH THIS IMPROVEMENT IS TO BE CONSTRUCTED ARE SHOWN ON PLANS AND PROFILES. GRADE POINTS FOR TOP OF CURB, CENTER LINE OF STREET OR CENTER LINE OF ALLEY ARE SHOWN BY CIRCLES ON PROFILES. AT ALL POINTS BETWEEN DESIGNATED POINTS THE GRADE SHALL BE ESTABLISHED SO AS TO CONFORM TO A STRAIGHT LINE DRAWN BETWEEN SAID DESIGNATED POINTS. ELEVATIONS ARE IN FEET ABOVE U.S.G.S. DATUM OR MEAN SEA LEVEL. THIS DRAWING AND THE DATA HEREON ARE HEREBY MADE A PART OF THE SPECIFICATIONS. WORK SHALL BE CONSTRUCTED ACCORDING TO SPECIFICATIONS ON FILE IN THE OFFICE OF THE COUNTY ENGINEER AND SHALL BE PROSECUTED ONLY IN THE PRESENCE OF THE COUNTY ENGINEER. BEFORE WORK CAN BE STARTED, THE CONTRACTOR MUST OBTAIN A PERMIT TO EXCAVATE IN COUNTY STREETS FROM THE L.A. COUNTY ROAD DEPT., 106-110 HALL OF RECORDS, AND MAKE A DEPOSIT WITH THE COUNTY ENGINEER, 700-700 FASHION LEAGUE BUILDING, SUFFICIENT TO COVER THE COST OF CONSTRUCTION INSPECTION AND RECORD PLANS.

COUNTY OF LOS ANGELES, CALIFORNIA
 APPROVED: *Wm. H. Fair Jr.*
 COUNTY ENGINEER
 APPROVED: *Ed. J. ...*
 CHIEF ENGINEER OF COUNTY
 SANITATION DISTRICT NO. 2
 CHECKED BY: *W. H. Fair Jr.* 12/17/1946
 OFFICE OF COUNTY ENGINEER, R.T.C.E. NO. 6330

BC 444

B/C Compared 10-15-47 C.E.T.
 E O

NEW YORK
KIMBLE & KIMBLE CO.
ENGINEERS

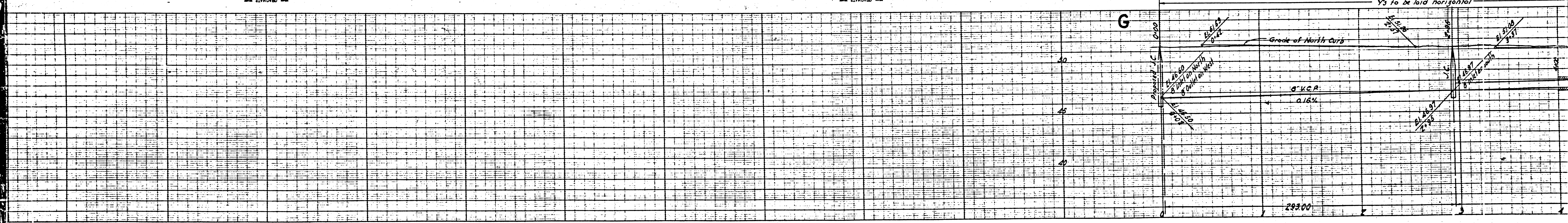
NEW YORK
KIMBLE & KIMBLE CO.
ENGINEERS

NEW YORK
KIMBLE & KIMBLE CO.
ENGINEERS

NEW YORK
KIMBLE & KIMBLE CO.
ENGINEERS

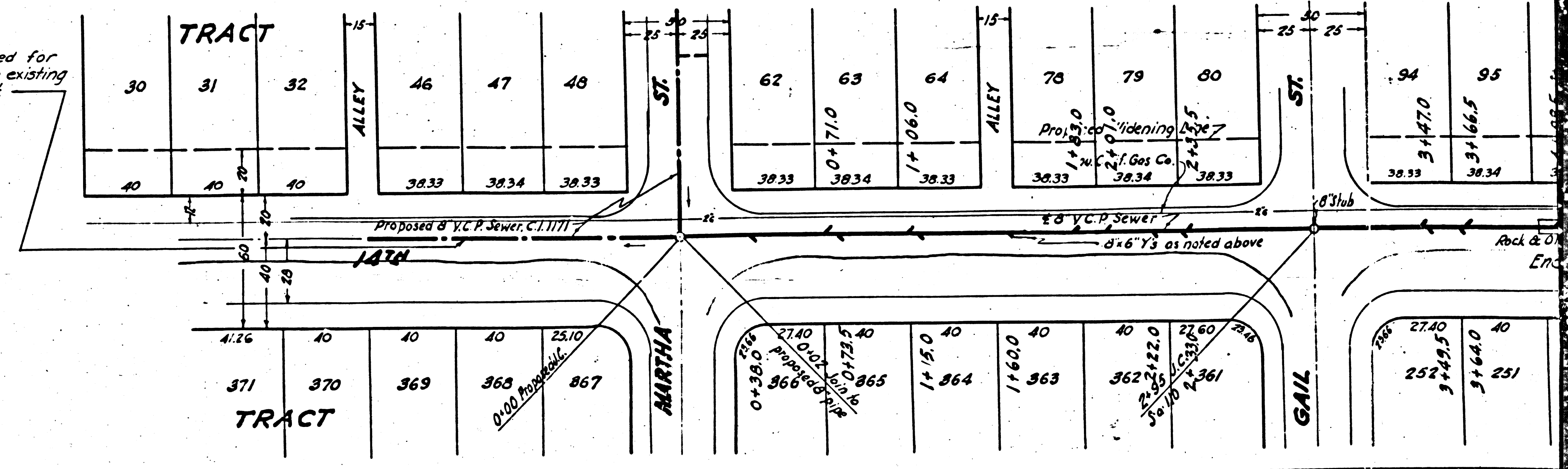
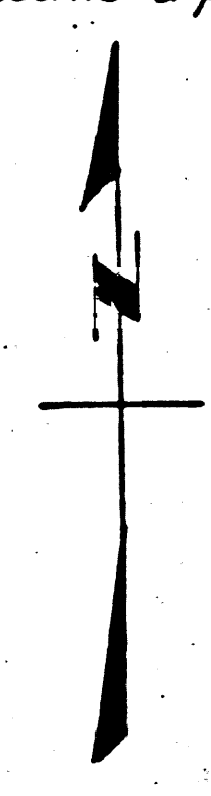
NEW YORK
KIMBLE & KIMBLE CO.
ENGINEERS

Trim Line 7



In the event that the sewers proposed for construction under C.I. No. 1171 are not constructed at the time service is required for Tract No. 14196, the sewer in 14th St. between Martha St. and the existing sewer in Alley West of Yine St. shall become a part of this contract.

PC 447



Trim Line 8 (5)

M3

M5

7298

7297

Trim Line 7

PROFILE ALIGNMENT AND GRADE OF
SANITARY SEWERS
 TO BE CONSTRUCTED IN
SANITARY SEWER RIGHTS OF WAY
 IN TRACT NO. 14196
ASHWORTH ST.
 BETWEEN NORWALK BLVD. AND GRAYLAND AVE.
HORST AVE.
 BETWEEN ASHWORTH ST. AND A POINT 800 FT. SOUTHERLY
 PRIVATE CONTRACT NO. 447
 W/S 88 Nov. 1946
 SHEET 2 OF 2 SHEETS
 PREPARED IN THE OFFICE OF
 WM. H. FAIR JR.
 BY: *W. H. Fair Jr.*
 REC. 66-65-3881

SCALE VERT. 1" = 4'
 HORIZ. 1" = 40'

FOR LEGEND
 SEE PLAN 9-0-64

FOR CONSTRUCTION NOTES SEE SHEET 1
 COUNTY OF LOS ANGELES, CALIFORNIA

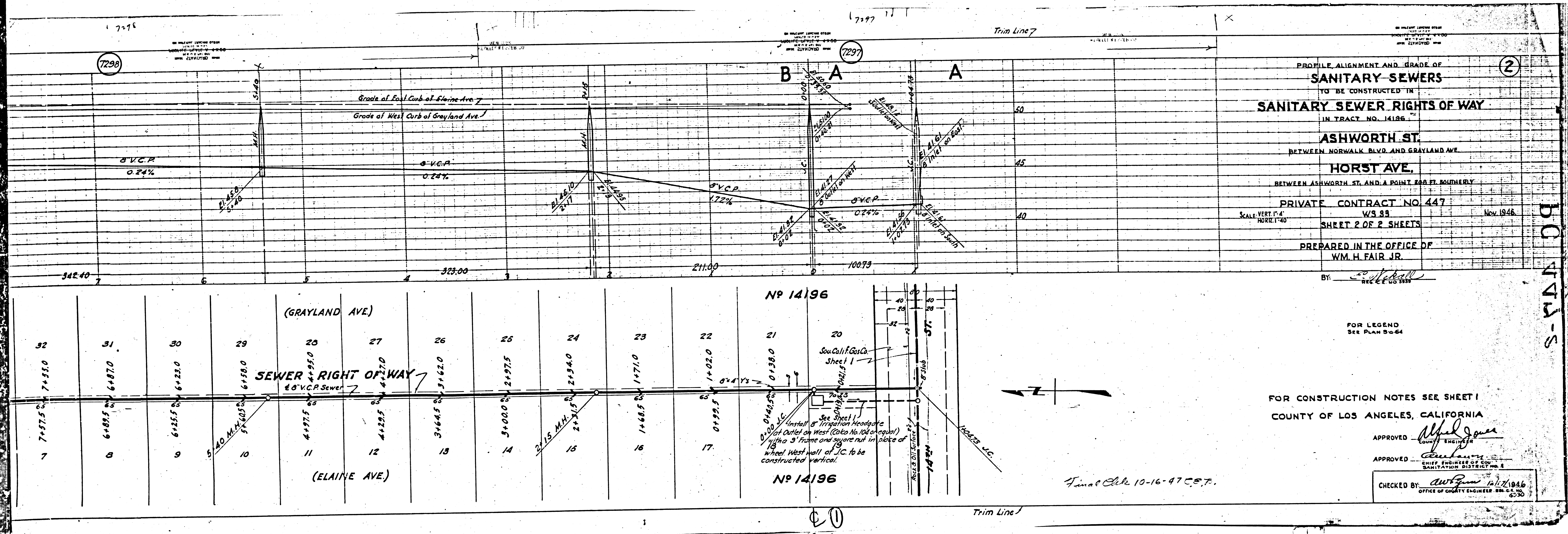
APPROVED *Alfred Jones*
 COUNTY ENGINEER

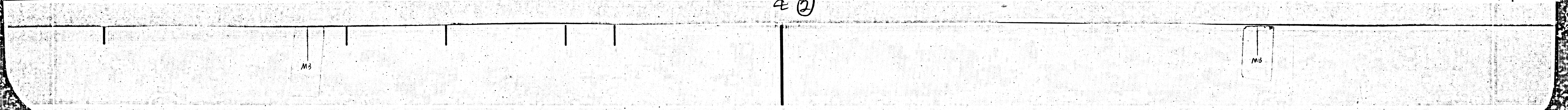
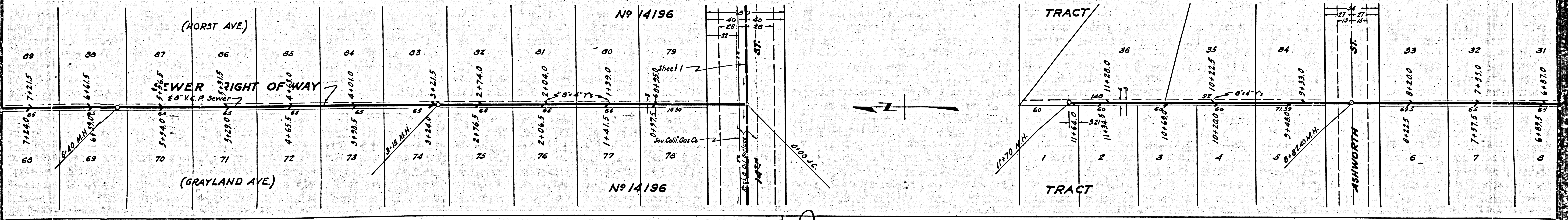
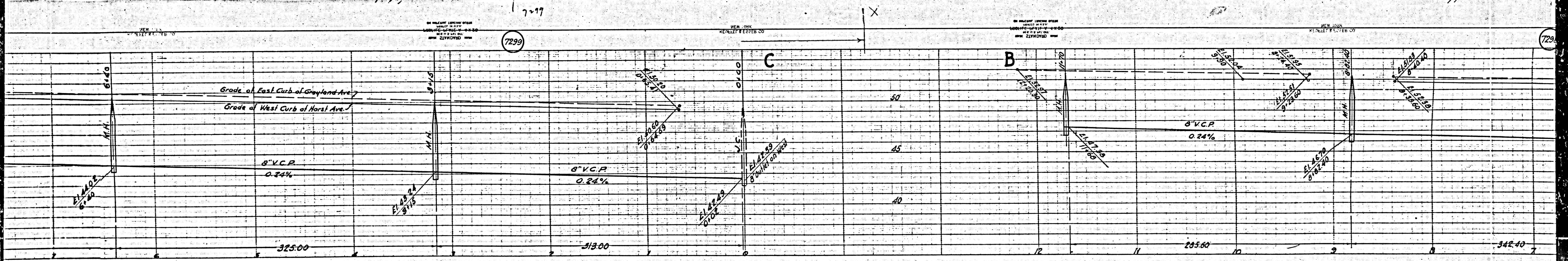
APPROVED *W. H. Fair Jr.*
 CHIEF ENGINEER OF SANITATION DISTRICT NO. 8

CHECKED BY: *W. H. Fair Jr.* 11/17/1946
 OFFICE OF COUNTY ENGINEER, BUREAU OF SANITATION

Final Check 10-16-47 C.E.P.

BC 447-5

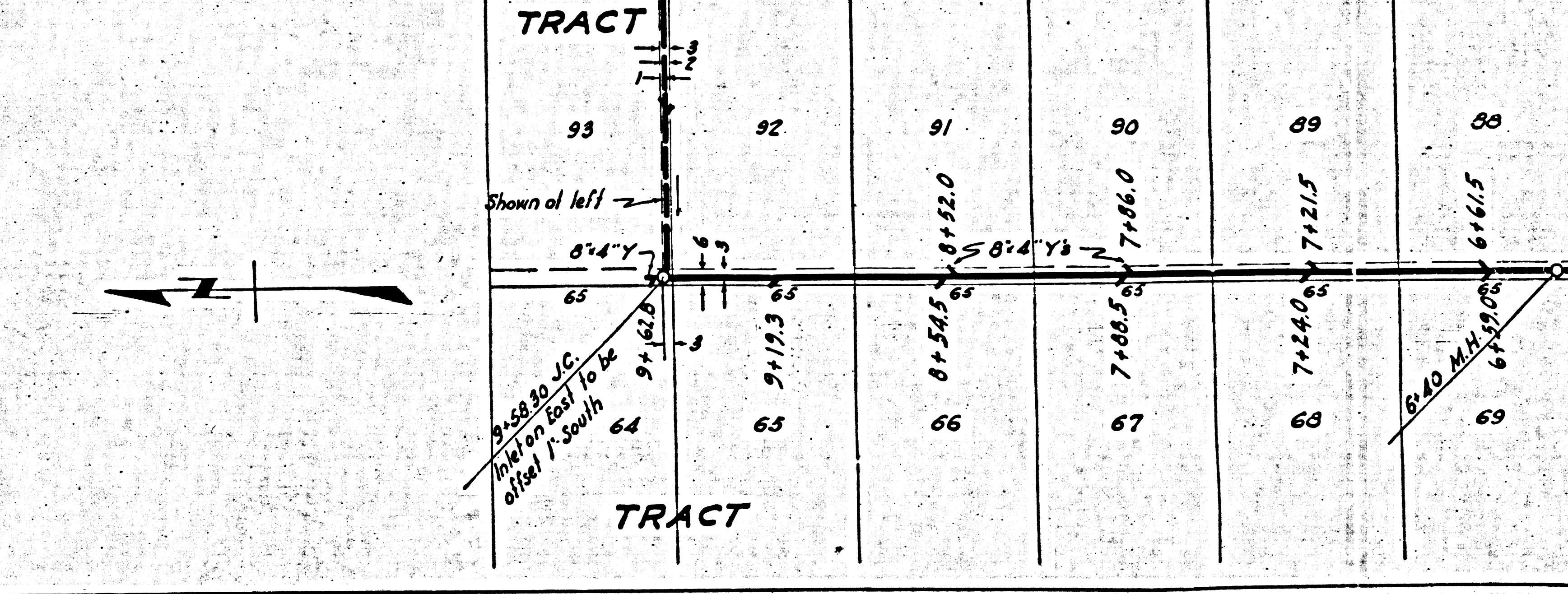
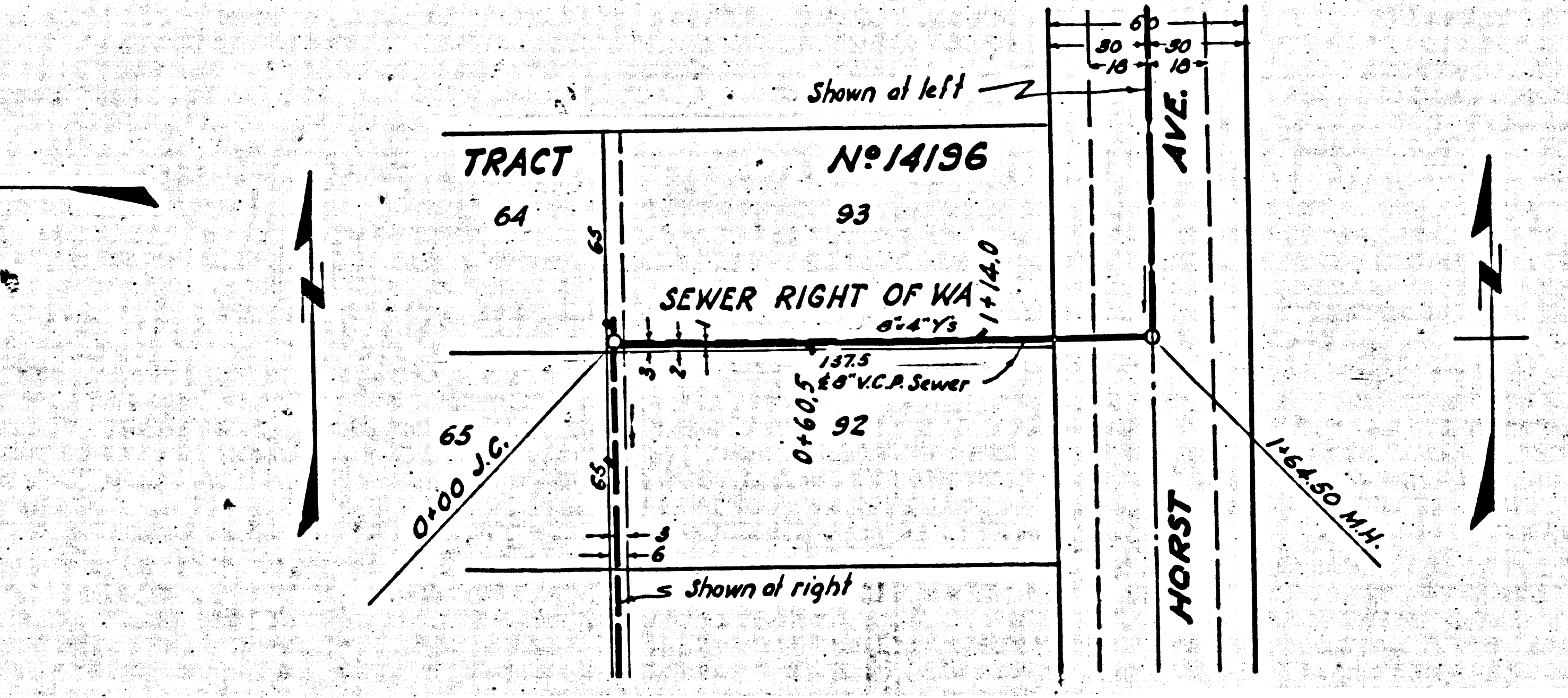
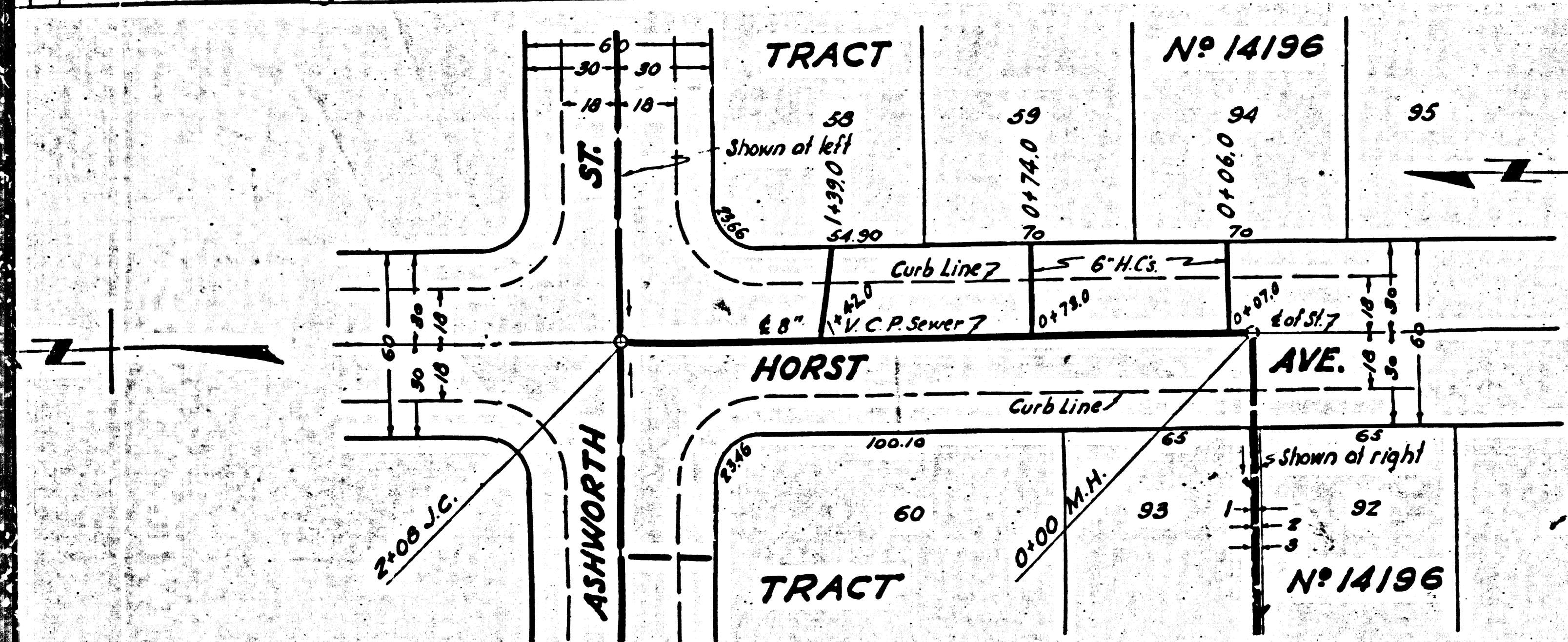
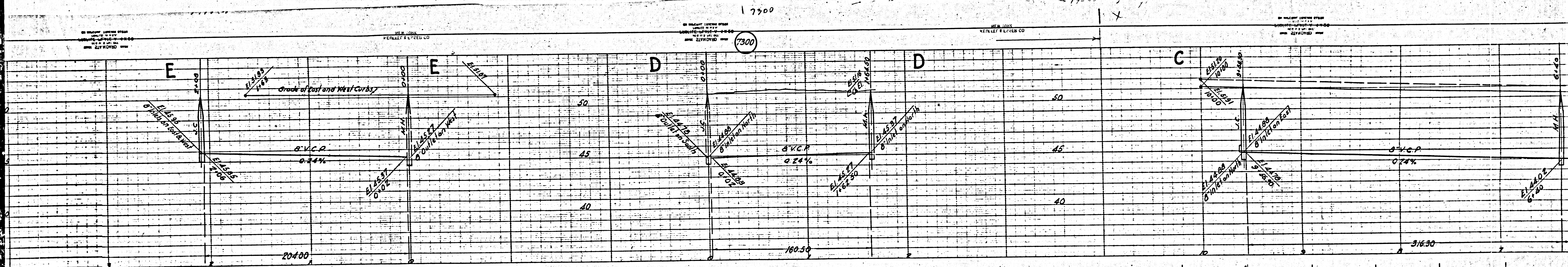




2

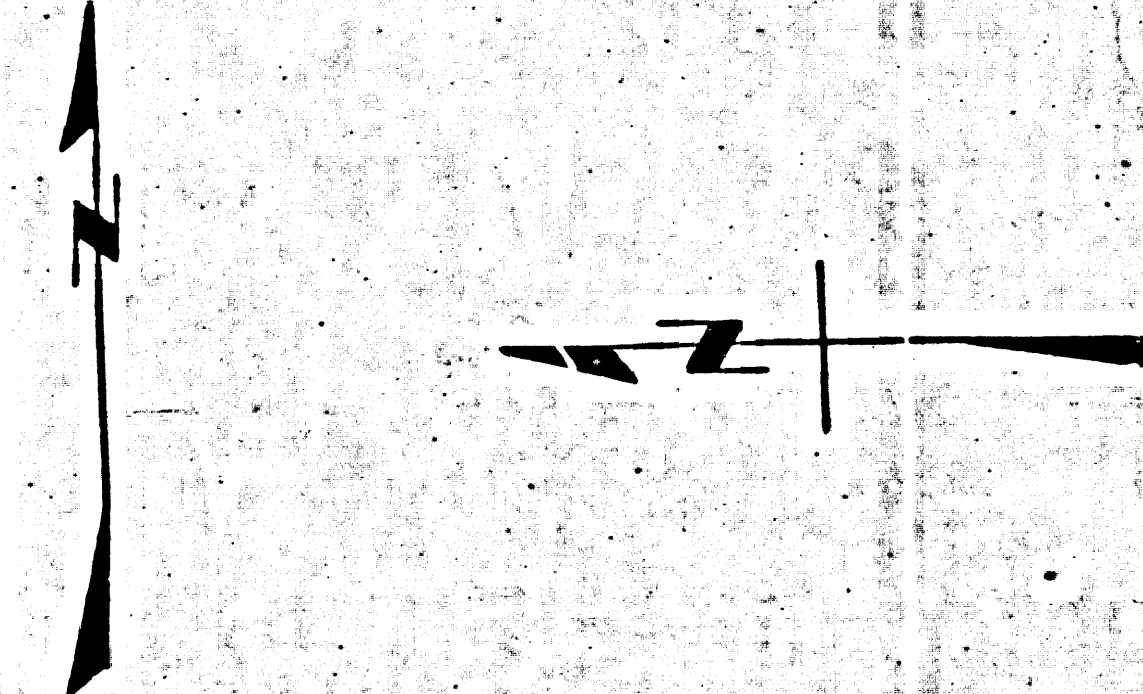
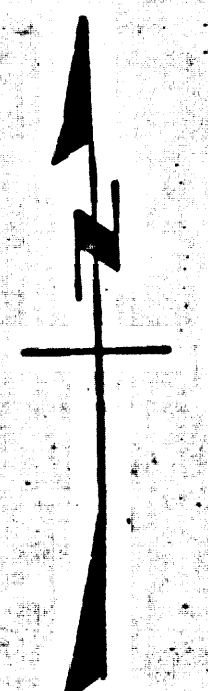
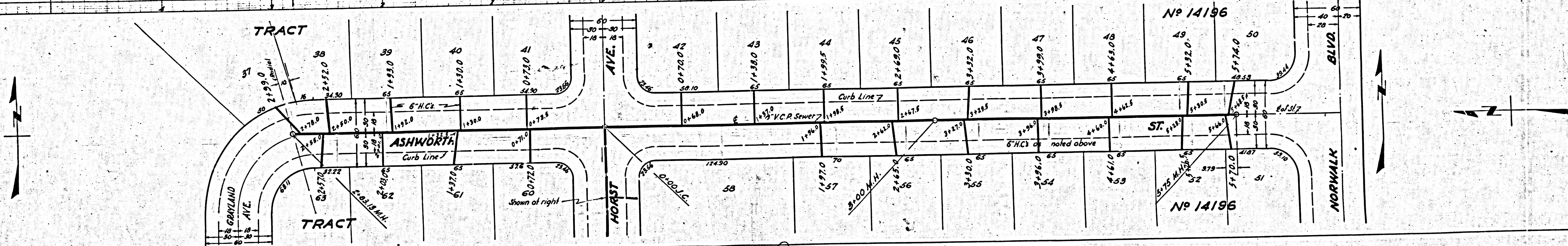
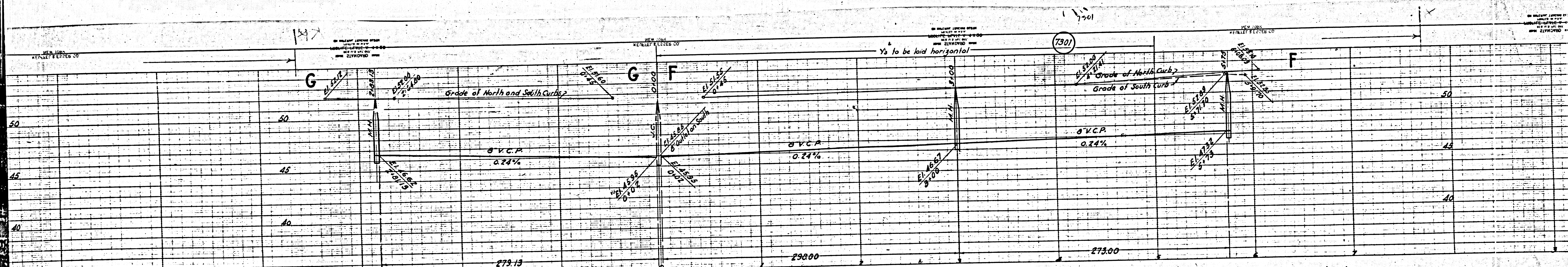
M3

M5



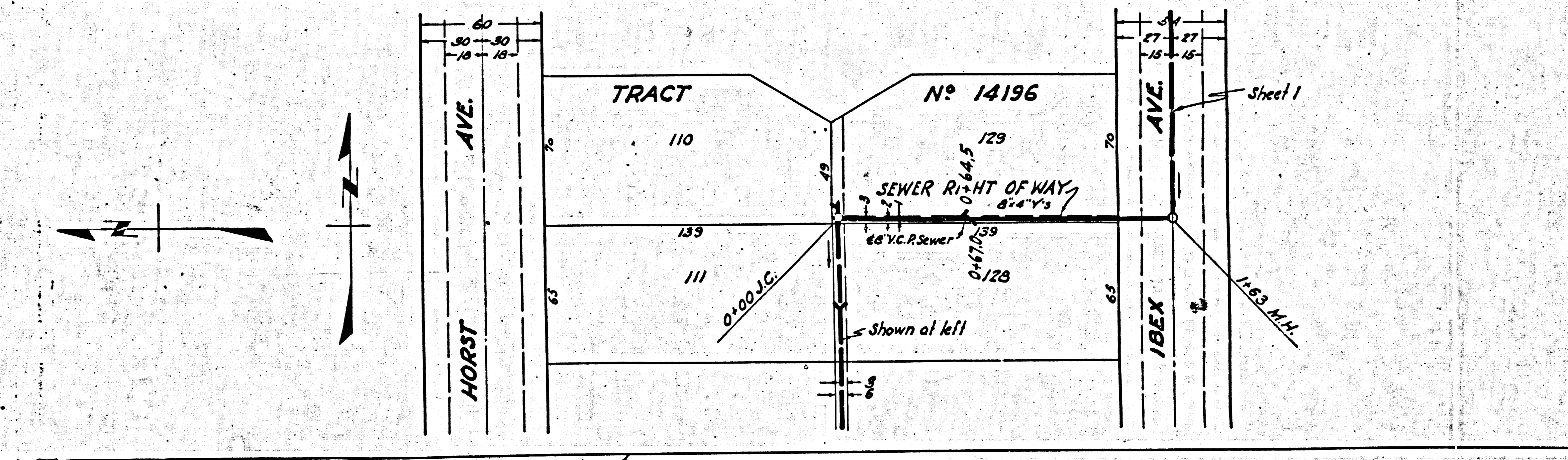
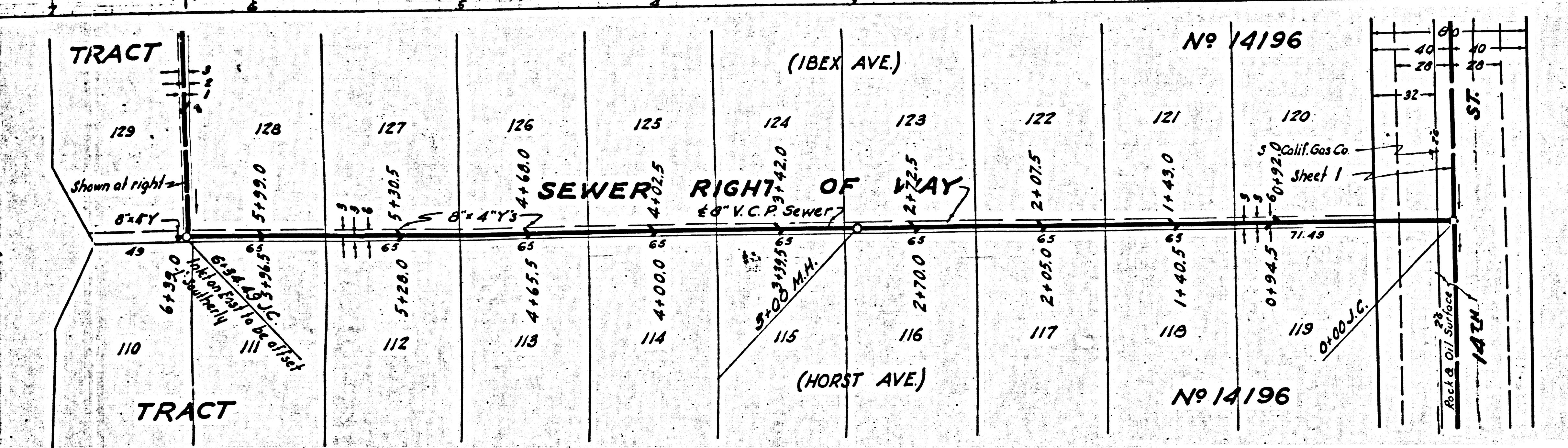
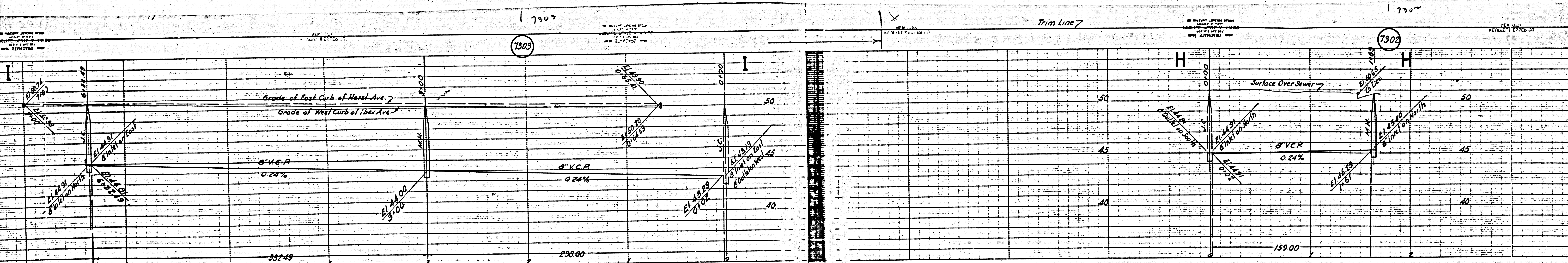
M3

M6



M5

M5



20

M8