

NEW YORK  
ENGINEERS

4907  
NEW YORK  
ENGINEERS

NEW YORK  
ENGINEERS

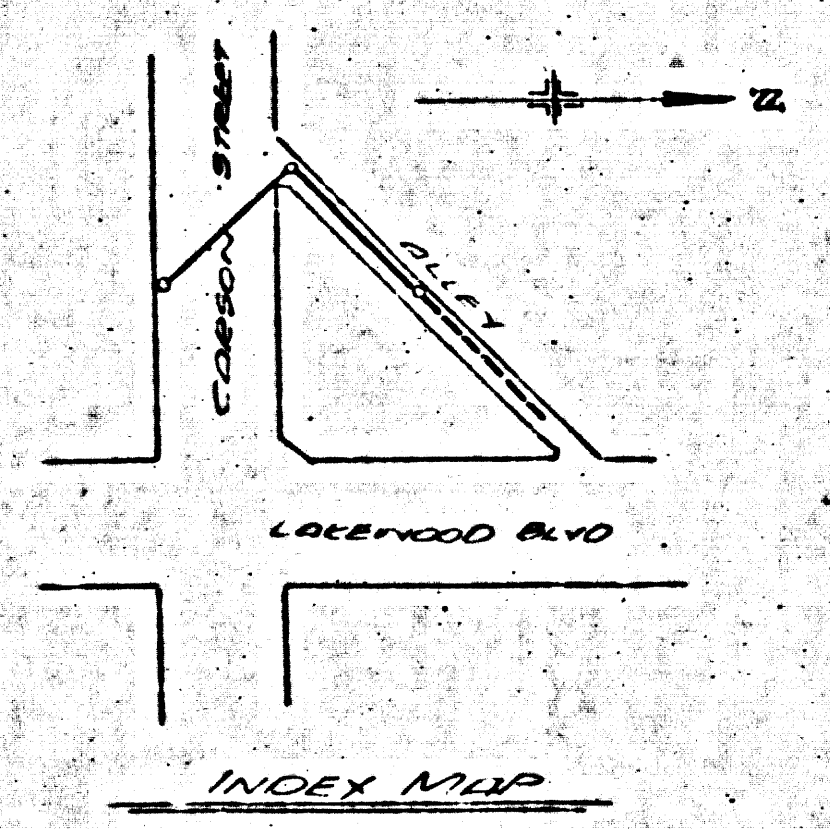
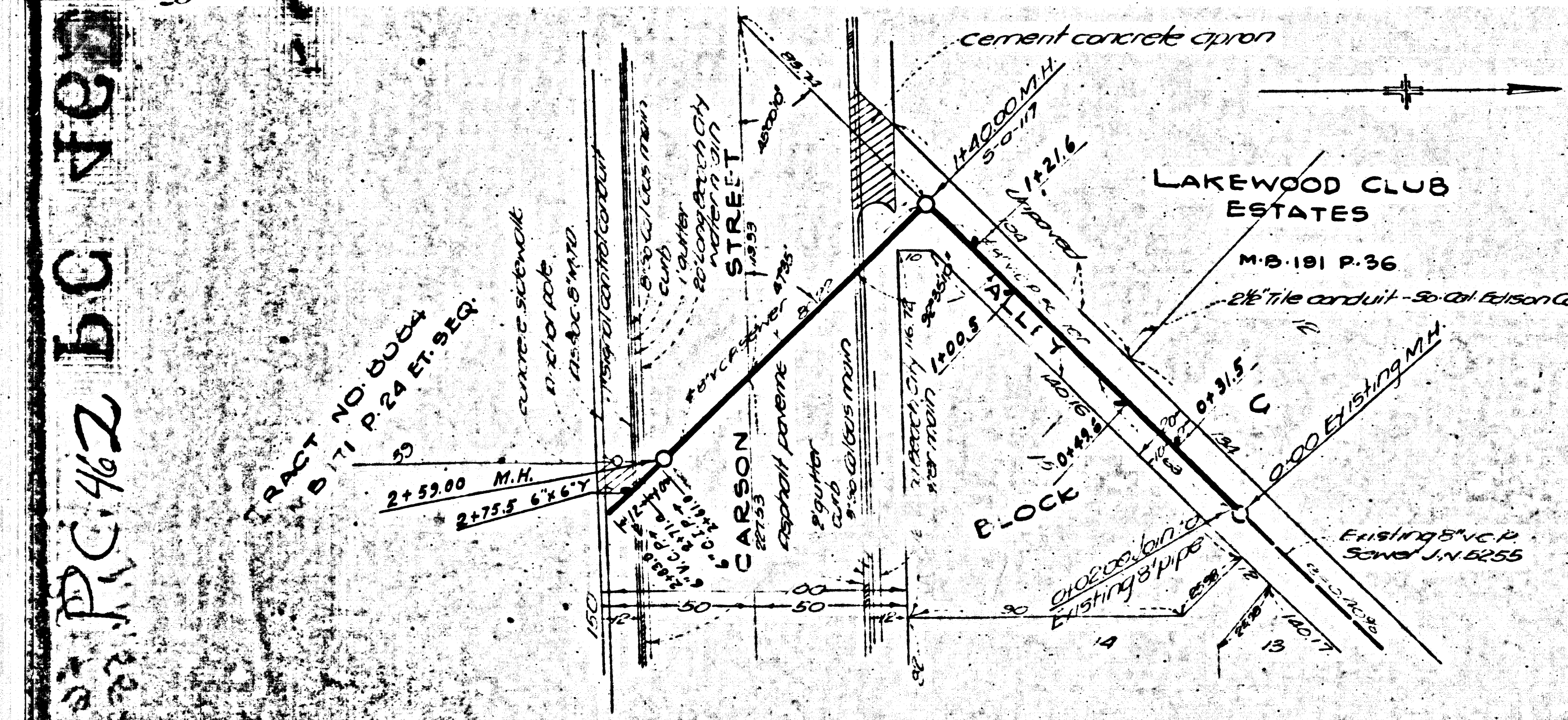
PROFILE ALIGNMENT AND GRADE SHEET  
**SANITARY SEWER**  
TO BE CONSTRUCTED IN  
**CARSON STREET**  
BETWEEN END OF SEWER IN ALLEY, E.O.  
LAKEWOOD CLUB ESTATES TRACT, M.B. 131-36  
AND THE SOUTH SIDE OF CARSON STREET.

PRIVATE CONTRACT NO. 452  
W.S. 30  
SHEET 1 OF 1 SHEET

- 1) Use standard manhole frames and covers, 2'-0" dia.
- 2) Use standard strength pipe (except as noted).
- 3) Use cement mortar local vitrified clay pipe joints.
- 4) Cover face of trench within paved area to meet Los Angeles County Road Dept. standards for safety and appearance.
- 5) All structures shall be built concrete structures, 3.0' dia.

NOTE: No representative of the County Engineer will accept or sign any portion of the work. The contractor shall provide all necessary permits and shall provide notes for them at their own expense. All work shall be done in accordance with the specifications and standards of the County Engineer. No revisions shall be made in these plans without approval of the County Engineer.

PLAN AND PROFILE PREPARED  
BY **C.J. Pulliam** DATE NO. 1518



**FOR LEGEND**  
See plan No. 30-64  
Note: Grades to which this improvement is to be constructed are shown on plans and profile. Grade points for top of curb, center line of street, or center line of alley are shown by circles on profiles. At all points between designated points the grade shall be established so as to conform to a straight line drawn between said designated points. Elevations are in feet above U.S.A. datum, mean sea level. This drawing and the data hereon are hereby made a part of the specifications. Work shall be constructed according to specifications or file in the office of the County Engineer and shall be prosecuted only in the presence of the County Engineer. Before work can be started, the contractor must obtain a permit to excavate from the County Engineer for the LA County Road Dept., 1104 Hill of Beverly, and make a deposit with the County Engineer, 701 Fashion League Building, sufficient to cover the cost of construction, inspection and record plans. If work is to be done in a state highway, a permit must be obtained from the State of California, Division of Highways, 808 State Building, after making the deposit with the County Engineer.

Station 856 - Elev. 23.90  
Lakewood country club (south corner)  
Square built in east end of concrete headwall of  
Alley and paved man underground about 300' east  
of Lakewood Club house.

Approved  
Lakewood Public Utility District

APPROVED  
APPROVED  
APPROVED

**Alfred J. Jones**  
City Engineer, County of Los Angeles

CHECKED BY **W. J. ...**  
DATE

Final CE T.R.P. 4/14/47

Tim to here