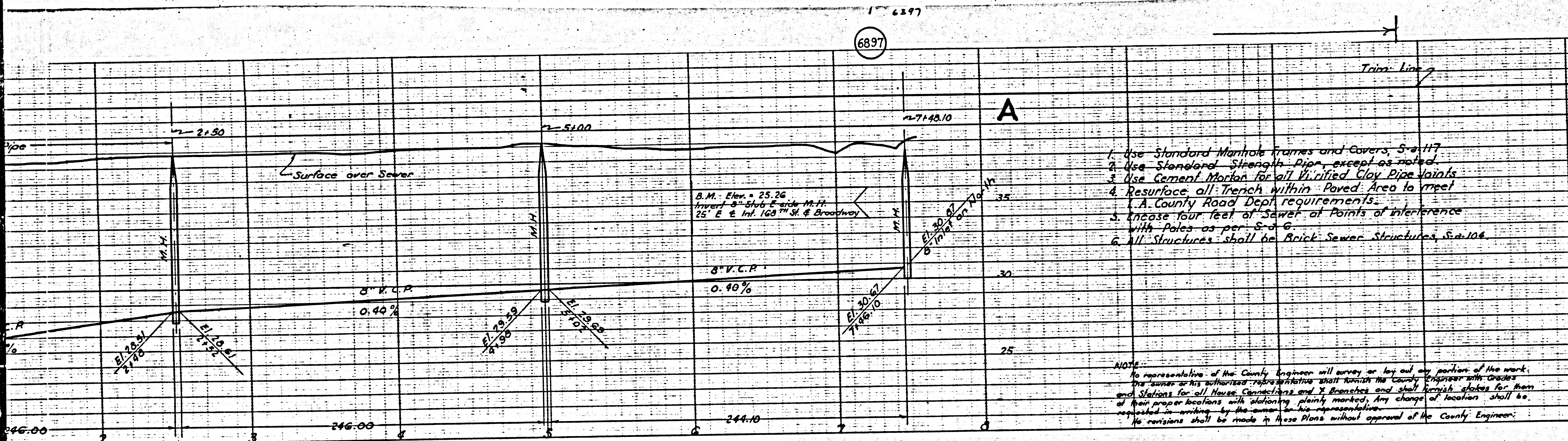


6897



1. Use Standard Manhole Frames and Covers, S-a-117
2. Use Standard Strength Pipe, except as noted
3. Use Cement Mortar for all Vitrified Clay Pipe Joints
4. Resurface all Trench within Paved Area to meet A County Road Dept requirements
5. Increase four feet of Sewer at Points of Interference with Poles as per S-a-6
6. All Structures shall be Brick Sewer Structures, S-a-106

PROFILE, ALIGNMENT AND GRADE OF
SANITARY SEWERS
 TO BE CONSTRUCTED IN
168TH STREET
 BETWEEN MAIN ST & BROADWAY
MAIN STREET
 BETWEEN 165TH ST & A POINT 650 FT NORTHERLY THEREOF

PRIVATE CONTRACT NO. 464
 W.S. 26
SHEET 1 OF 1 SHEET
 Scale: Horiz. 1"=40'
 NOV. 1946

PREPARED IN THE OFFICES OF
JONES & GILBERT

BY *Paul Jensen*
 Reg. C.E. No. 2311

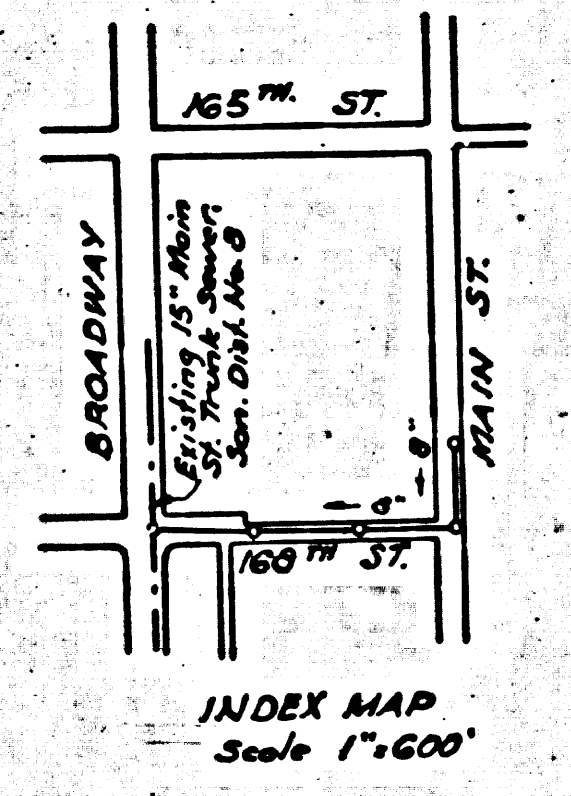
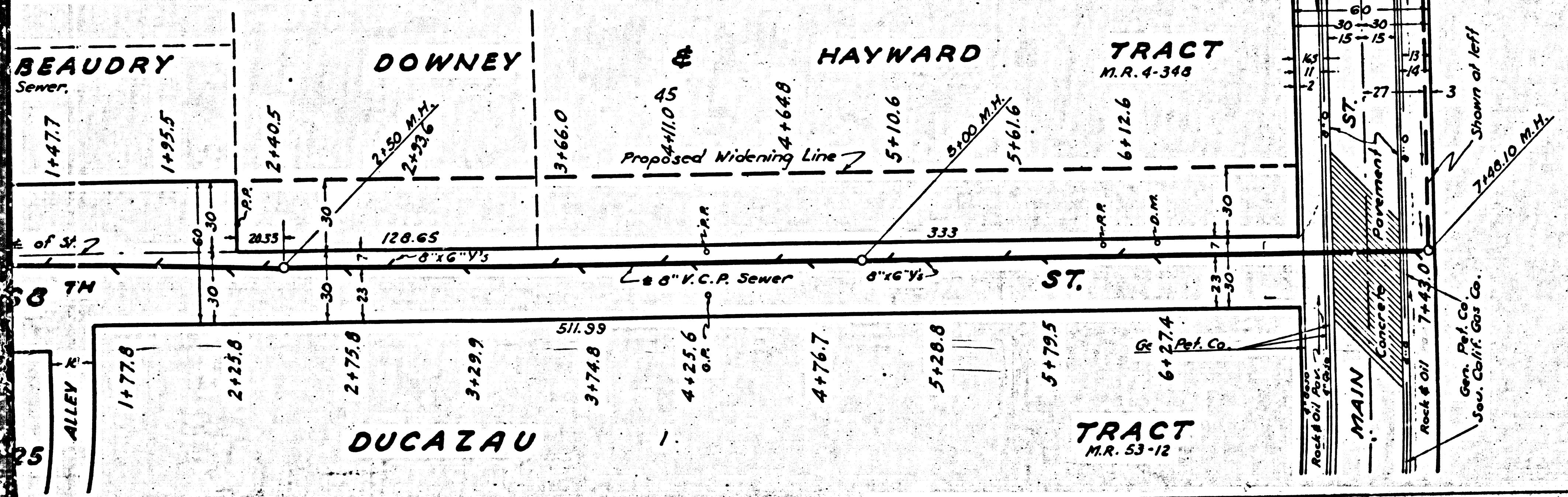
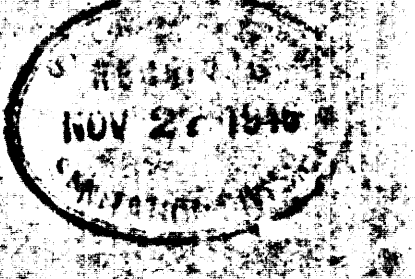
FOR LEGEND
 See Plan S-a-64

NOTE:
 No representation of the County Engineer will survey or lay out any portion of the work
 for sewer or any other work. The contractor shall furnish the County Engineer with Grades
 and Stations for all House Connections and Y Branches and shall furnish stakes for them
 at their proper locations with stationing plainly marked. Any change of location shall be
 requested in writing by the contractor. No revisions shall be made to these Plans without approval of the County Engineer.

NOTES:
 Grades to which this improvement is to be constructed are shown on Plans and Profiles.
 Grade points for top of curb, center line of streets, or center line of alley are shown by
 circles on Profiles. At all points between designated points the grade shall be established
 as a straight line drawn between said designated points.
 Elevations are in feet above U.S.G.S. Datum or Mean Sea Level.
 This drawing and the data hereon are hereby made a part of the specifications.
 Before work can be started, the Contractor must obtain a permit to excavate in
 County streets from the L.A. County Road Dept. 1104 Hall of Records, and make
 a deposit with the County Engineer, 700 Fashion League Building sufficient to cover
 the cost of Construction Inspection and Record Plans.

COUNTY OF LOS ANGELES, CALIFORNIA

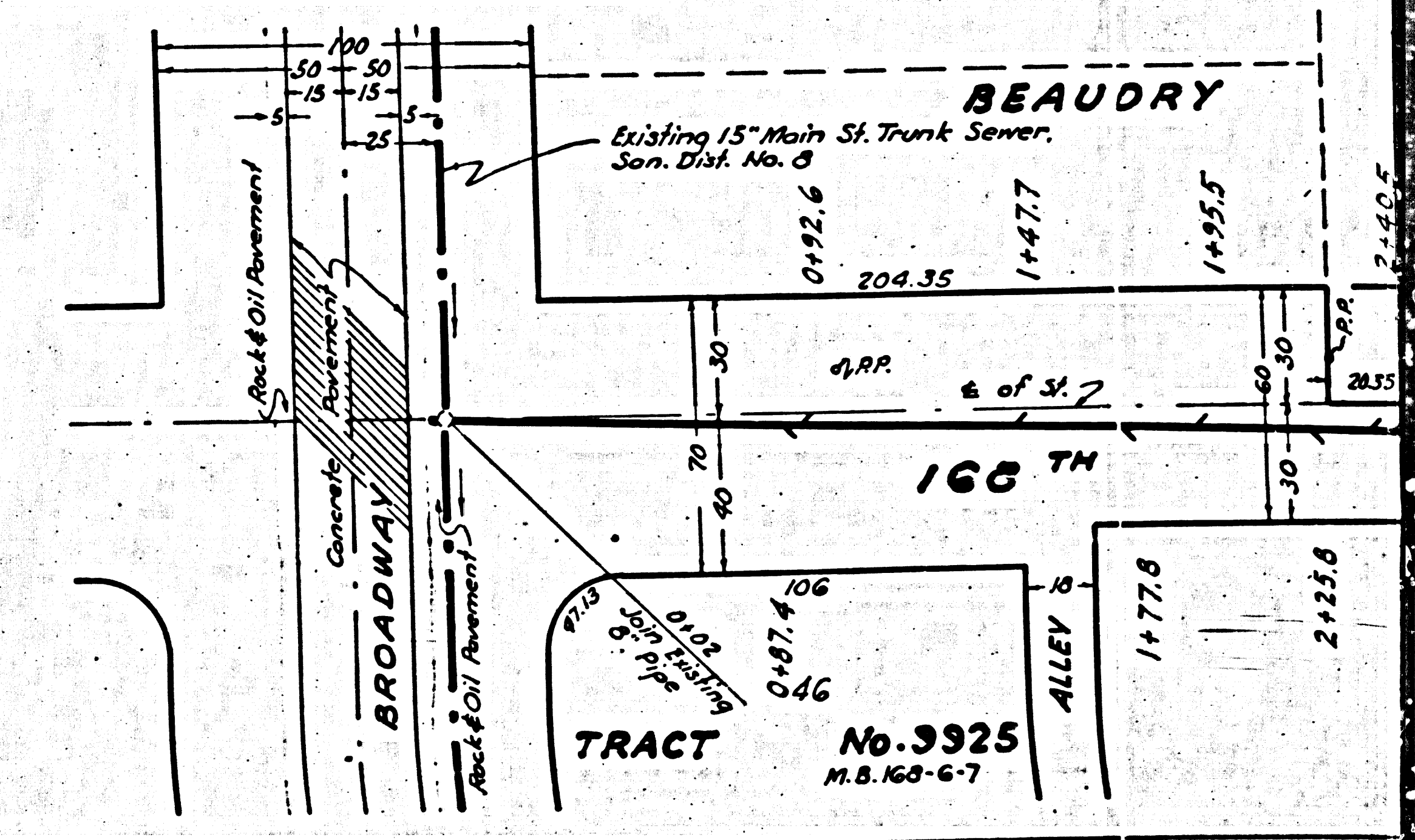
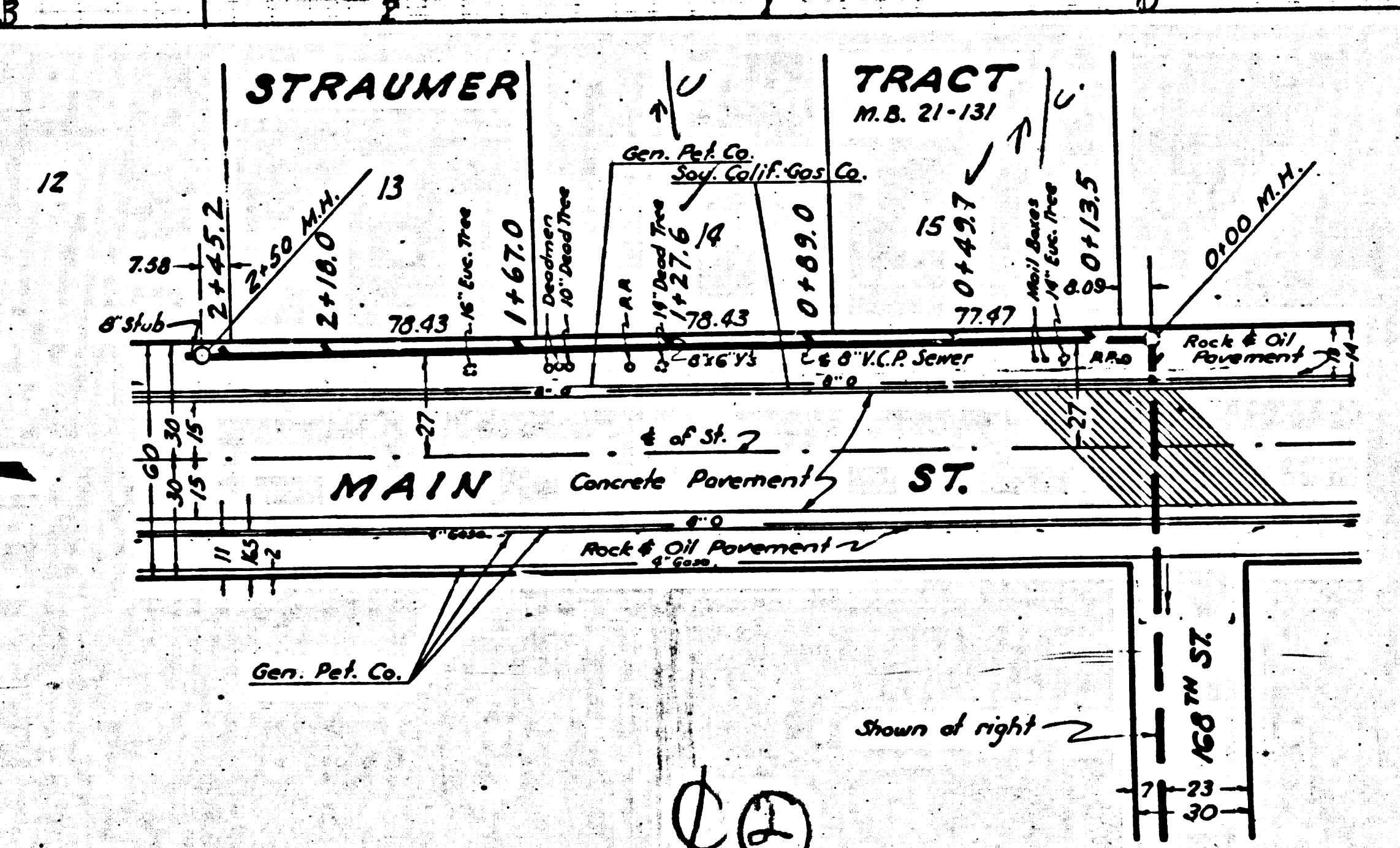
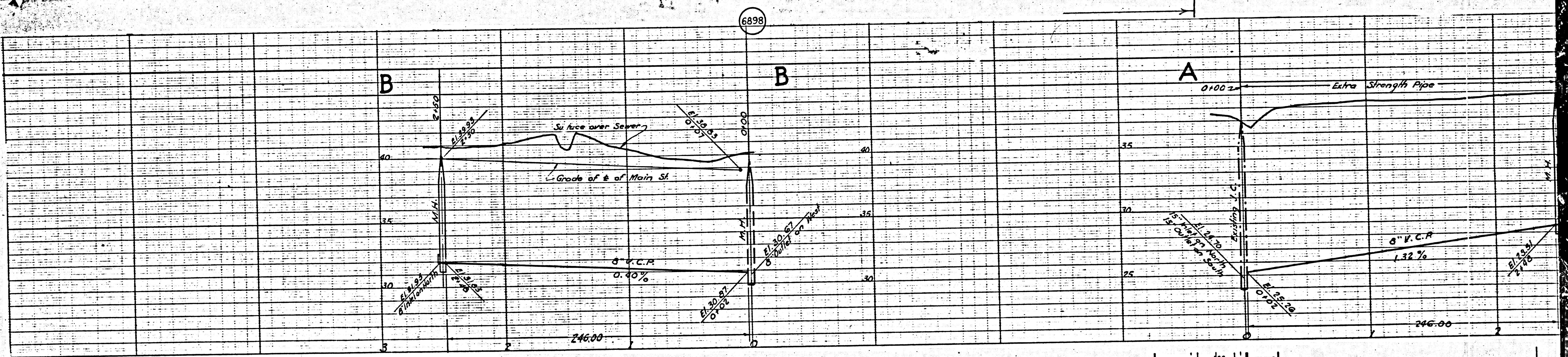
APPROVED *Alfred Jones*
 County Engineer
 APPROVED *C. R. Compton*
 ASST. Chief Engineer of County
 Sanitation District No. 8
 CHECKED *Autumn* 11/21/46
 Office of County Engineer, Reg. C.E. No. 6330



Final C.T.I.P. 4/8/47

MS

MS



24 13

6898

B

B

A

STRAUMER

TRACT
M.B. 21-131

BEAUDRY

166 TH

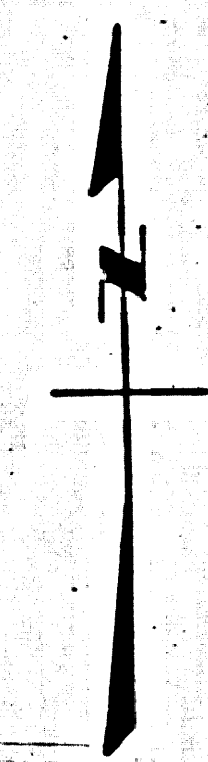
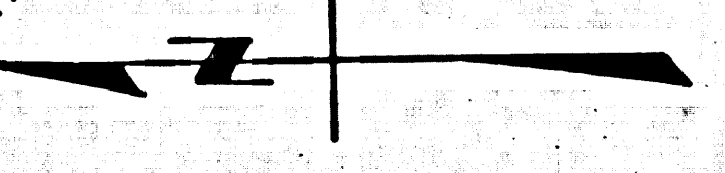
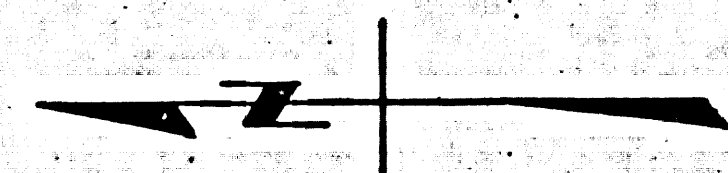
TRACT
No. 3925
M.B. 163-6-7

MAIN ST.

166 TH ST.

BROADWAY

ALLEY



Ⓞ

M8

M8