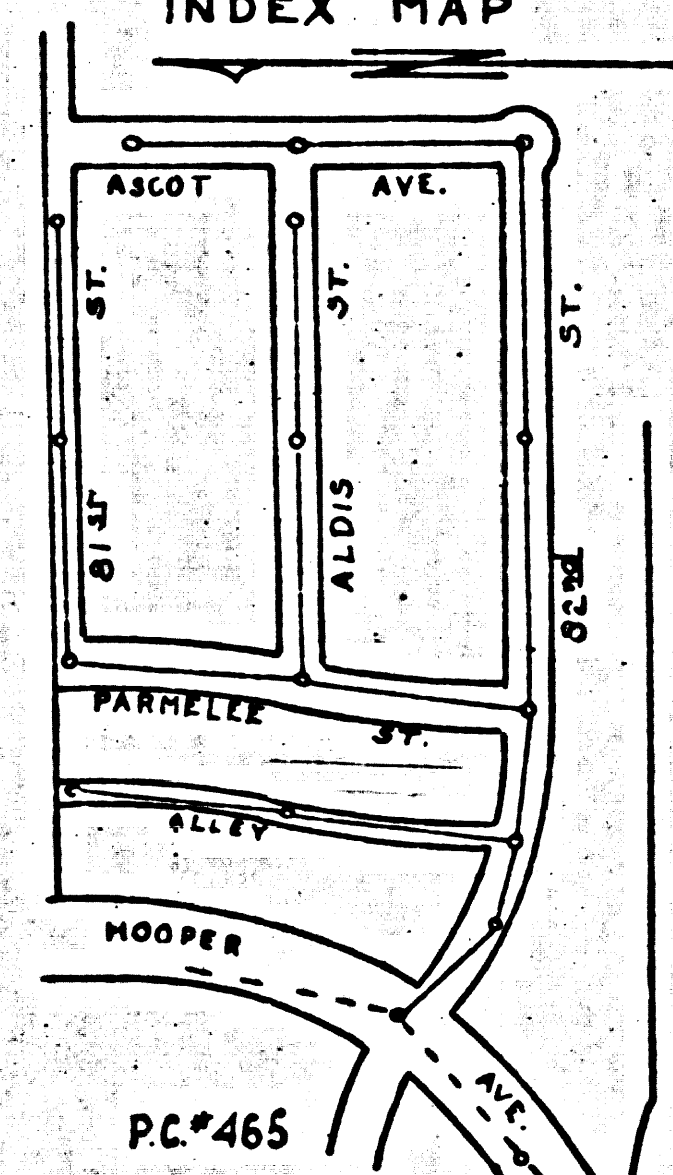
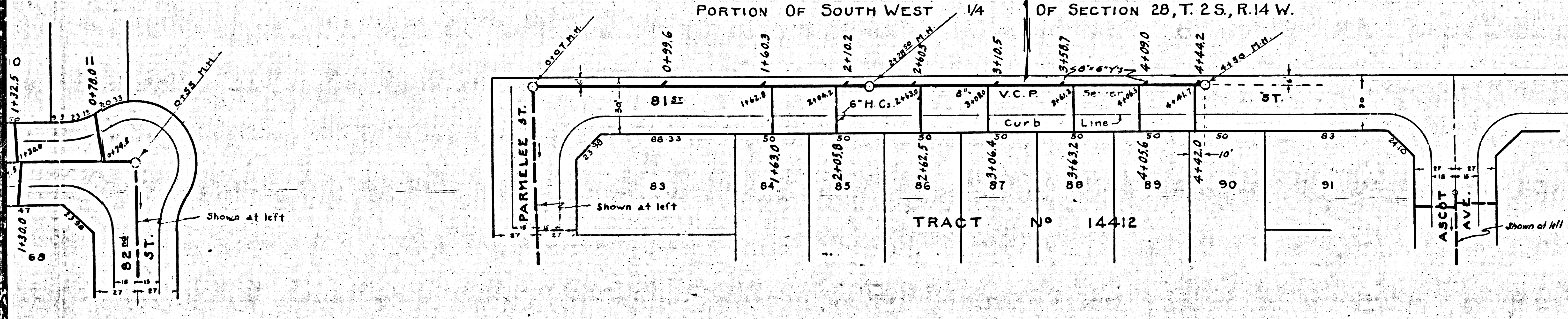


Use Standard Manhole Frames and Covers, 3'-6", 157
 Use Standard Strength Pipe (Except as noted)
 Use Cement Mortar for all Vitrified Clay Pipe Joints
 Resurface all Trench within paved Area to meet
 County Road Dept. Requirement.
 Construct House Connections with invert at Prop-
 erty Line 5 Feet below Curb Grade
 All Structures shall be Brick Sewer Structures 3'-0" dia

PROFILE, ALIGNMENT & GRADE OF
 SANITARY SEWERS
 TO BE CONSTRUCTED IN
 82' ST.
 BETWEEN HOOPER & ASCOT AVES
 ASCOT AVE.
 BETWEEN 812 & 824 STS.
 PARMELEE ST.
 BETWEEN 817 & 824 STS.
 ALDIS ST.
 BETWEEN ASCOT AVE & PARMELEE ST.
 812 ST.
 BETWEEN ASCOT AVE & PARMELEE ST.
 ALLEY
 FIRST ALLEY ELY OF HOOPER & NLY. OF 824 ST.
 IN TRACT NO 14412
 PRIVATE CONTRACT NO 465
 SCALE: HORIZONTAL 1" = 40'
 VERTICAL 1" = 5'
 PREPARED IN OFFICE OF
 ASSOCIATED ENGINEERS & SURVEYORS
 BY WALTER H. HARRIS
 R.E.C.E. # 123

Note: No representative of the County Engineer will survey or
 equipt any portion of the work.
 The Surveyor has Authorized Representations shall
 furnish the County Engineer with Grade Sheets and Stations
 shall House Connections and Y Branches and shall provide
 stakes for them at their proper locations with stationing
 plainly marked. Any change of location shall be requested
 in writing by the Owner or his Representative.
 No revisions shall be made in these plans without
 Approval of the County Engineer.



Grades to which this improvement is to be constructed are shown on
 Plans & Profile. Grade Points for Top of Curb, Center Line of Street or
 Center Line of Alley are shown by circles on Profile. At all points between
 designated points the grade shall be established so as to conform to a
 straight line between said designated points.
 Elevations are in feet above U.S.C.S. Datum.
 This drawing and the data hereon are hereby made a part of the specification.
 Work shall be constructed according to specifications on file in the
 Office of the County Engineer and shall be prosecuted only in the presence
 of the County Engineer.
 Before work can be started, the Contractor must obtain a permit
 to excavate in County Streets from the L.A. County Road Dept.,
 104 Hall of Records, and make a deposit with the County Engineer,
 700 League Building, sufficient to cover the cost of con-
 struction inspection and Record Plans.
 COUNTY OF LOS ANGELES, CALIFORNIA
 Approved - *Walter H. Harris*
 County Engineer
 Approved - *John B. Knorr*
 Chief Engineer of County
 Sanitation District No 1

RECEIVED
 FEB 28 1947
 SANITATION DIVISION

Checked By *John B. Knorr* Feb 19, 1947
 Office of County Engineer Dept. 1-46522

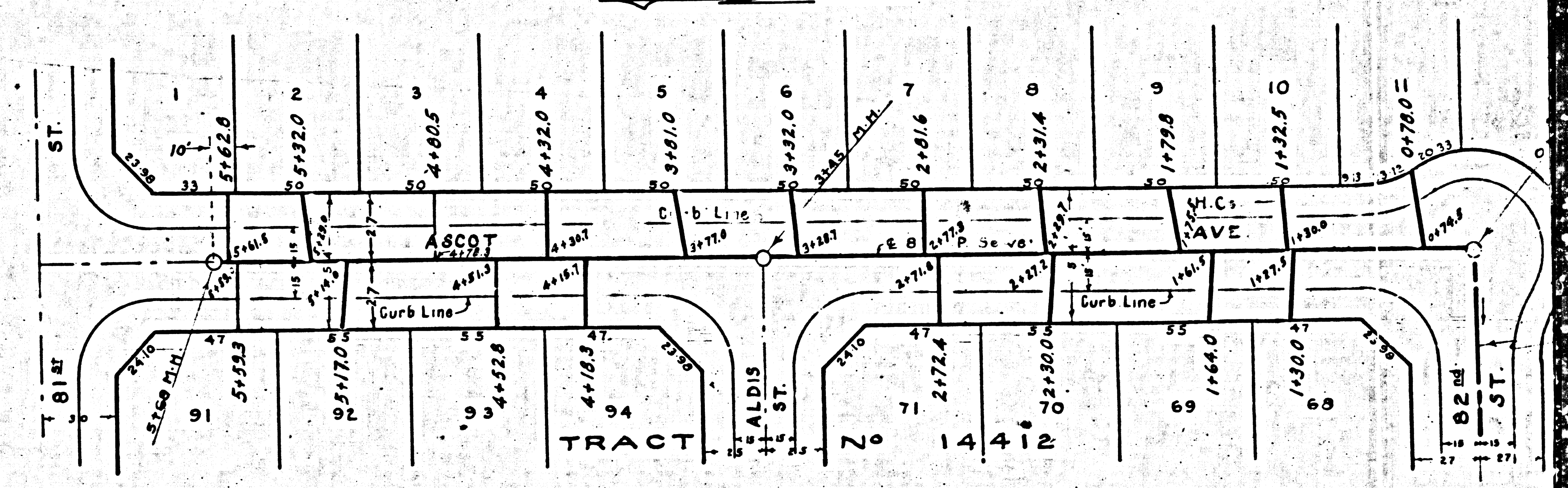
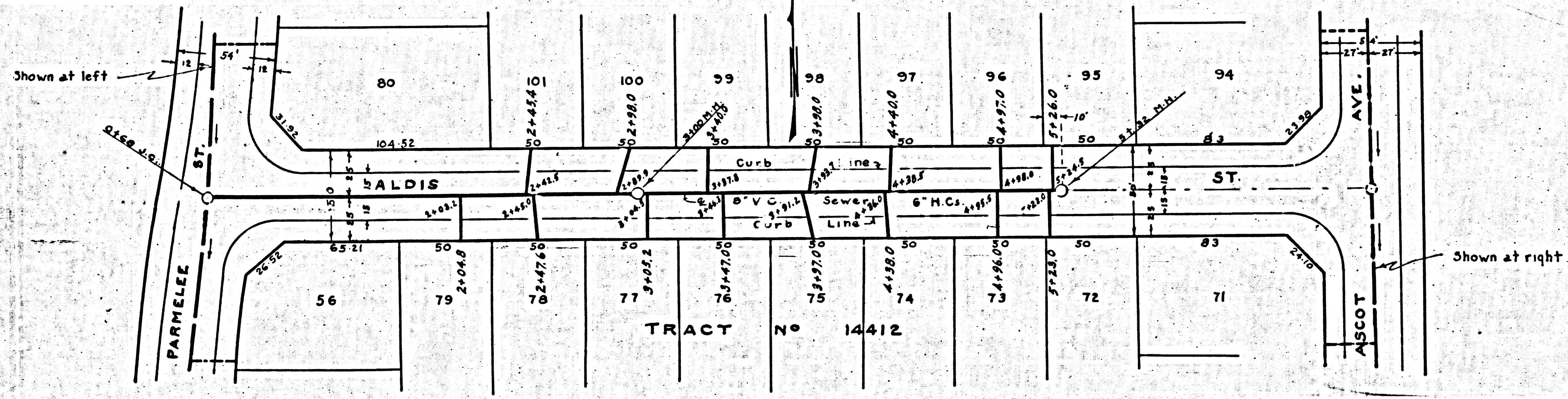
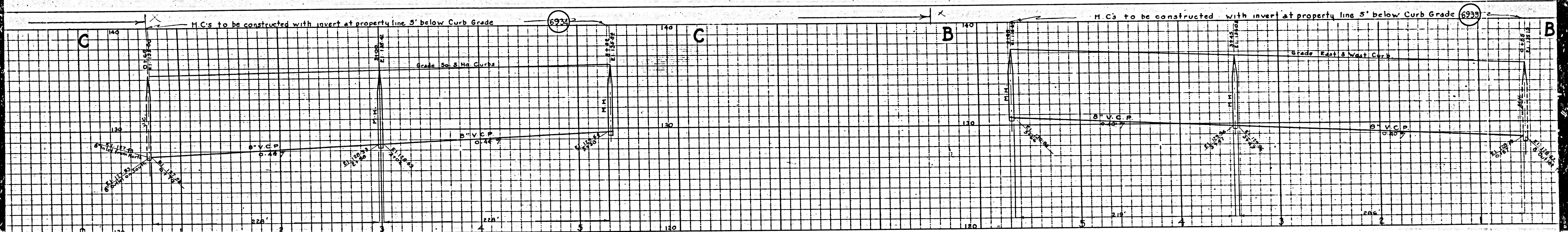
Final Ck. T.L.P. 4/10/47

PC 465

PC 465

6924

6925

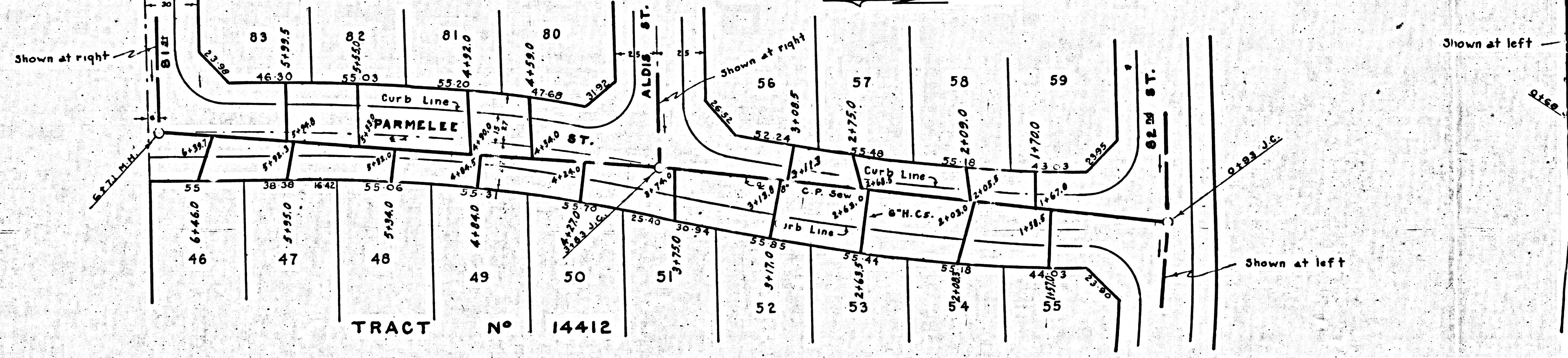
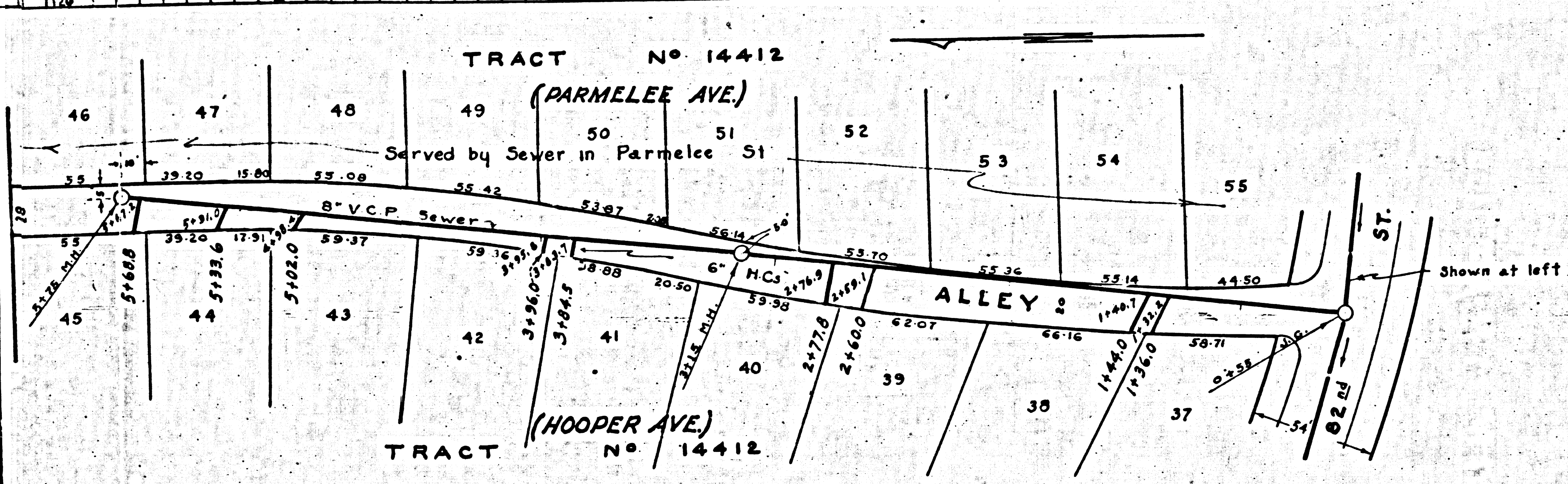
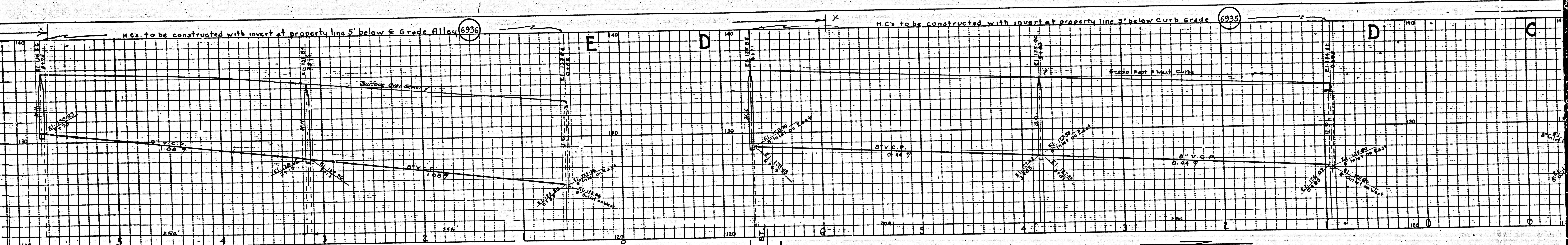


M3

M5

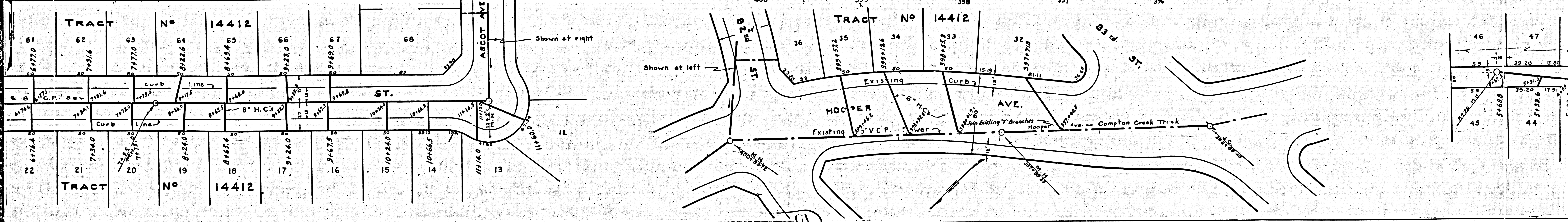
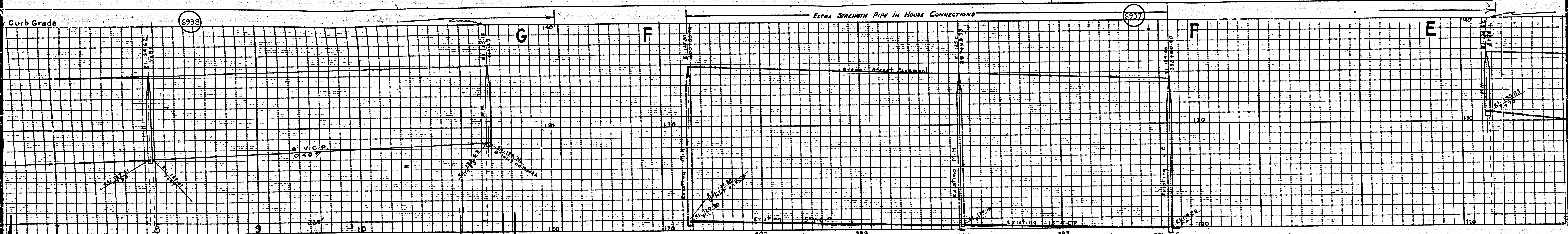
6736

6735



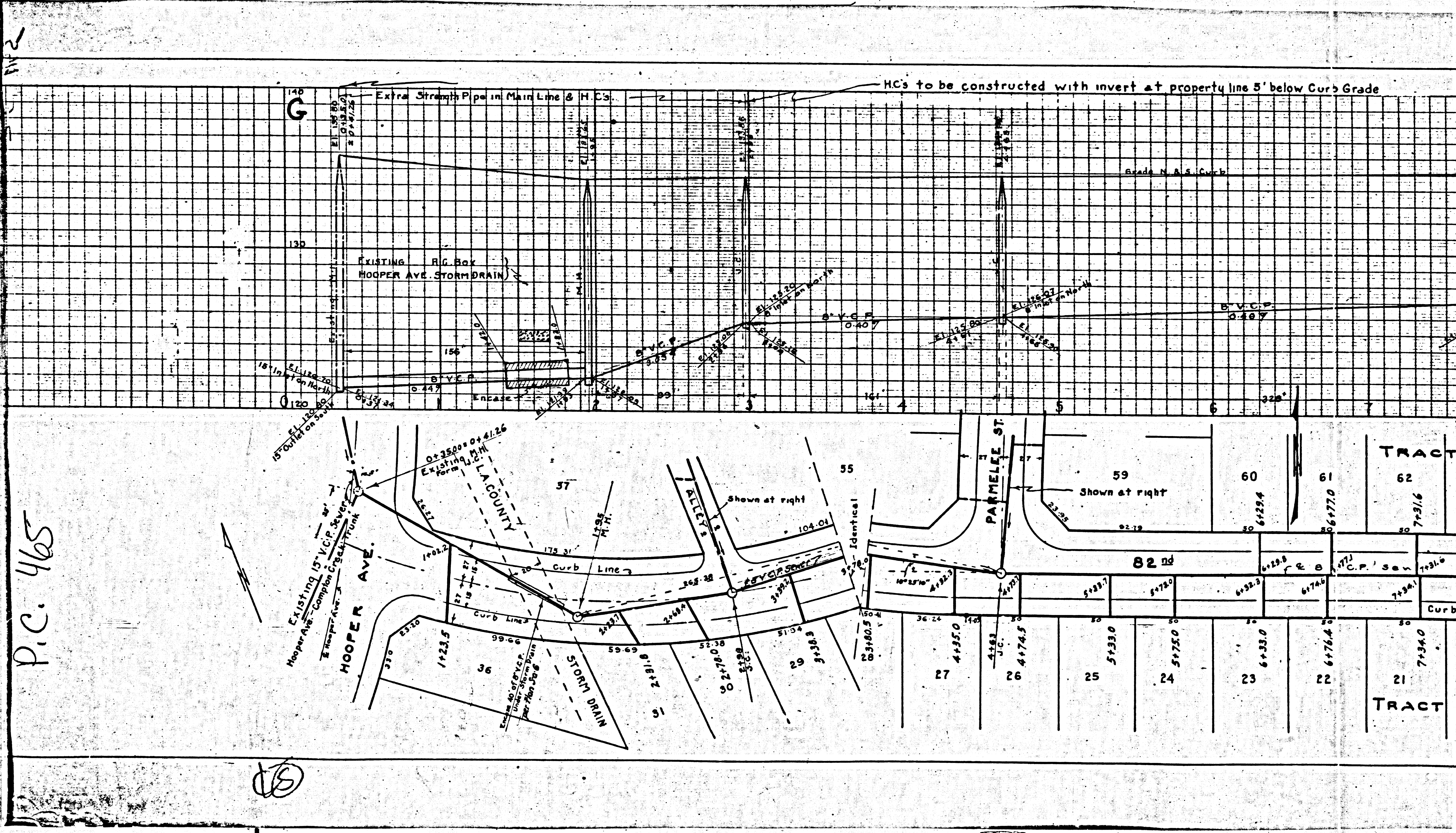
MB

MB



M3

M6



P.C. 465

18

MS

MS