

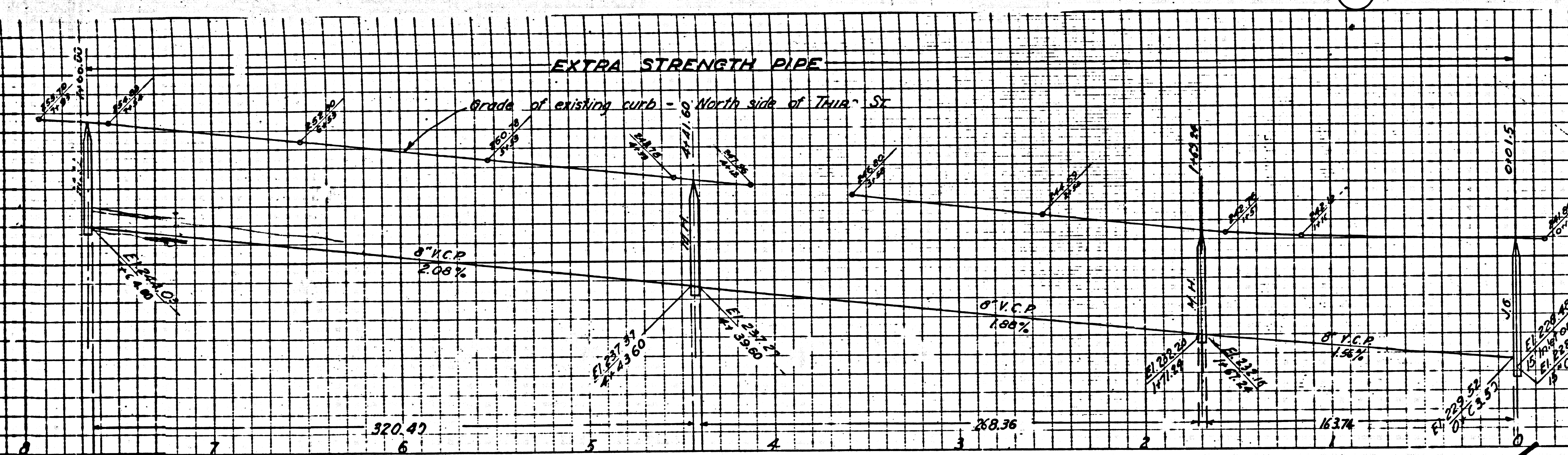
7529
7529

DOUBLE SCALE

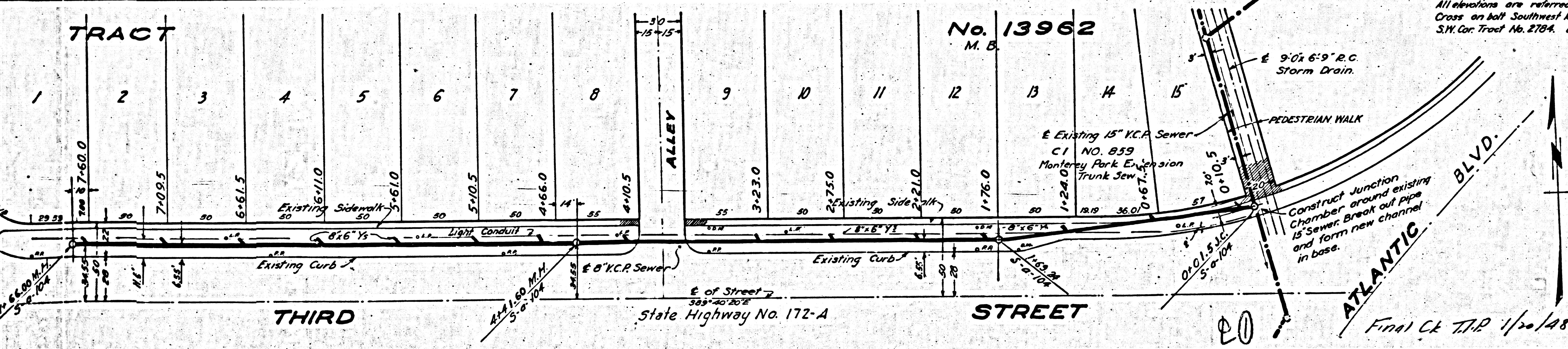
PROFILE ALIGNMENT AND GRADE OF
SANITARY SEWERS
 TO BE CONSTRUCTED IN
THIRD STREET
 BETWEEN WOODS AVENUE AND
 PEDESTRIAN WALK 800' E. OF WOODS AVENUE
 IN
 TRACT No. 13962

- 1 USE 3'-0" I.I.T. MANHOLE FRAMES AND COVERS.
- 2 USE EXTRA STRENGTH PIPE.
- 3 USE CEMENT MORTAR FOR ALL VITRIFIED CLAY PIPE JOINTS.
- 4 RESURFACE ALL TRENCH WITHIN PAVED AREA TO MEET CALIFORNIA STATE HIGHWAY REQUIREMENTS.
- 5 ENCASE FOUR FEET OF SEWER AT POINTS OF INTERFERENCE WITH POLES AS PER S-O-E
- 6 ALL STRUCTURES SHALL BE BRICK SEWER STRUCTURES AS PER S-O-104.

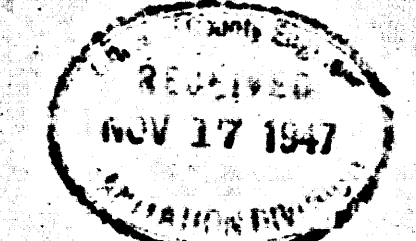
NOTE:
 No Representative of the County Engineer will survey or lay out any portion of the work. The Owner at his own risk, responsibility shall furnish the County Engineer with grade stakes and starting of all house connections and V-ditches and shall provide adequate for them at their proper locations with dimensions plainly marked. Any change of location shall be requested in writing by the Owner or his representative. No revisions shall be made in these plans without approval of the County Engineer.



All elevations are referred to L.A. County Bench Mark No. 23-201. Cross on both Southwest by Southern California Edison Tower of S.W. Cor. Tract No. 2784. Elevation 221.56.



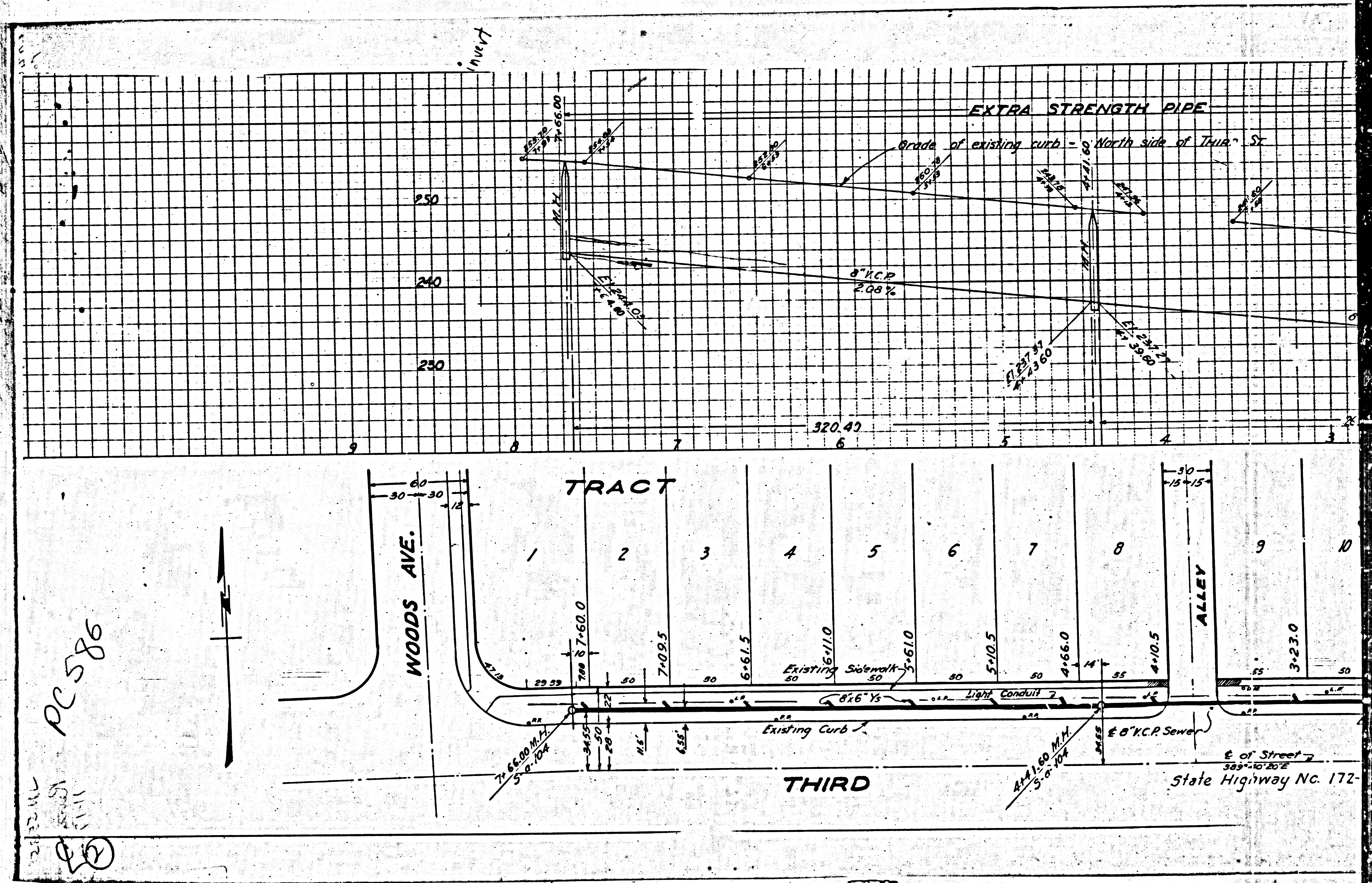
PRIVATE CONTRACT No. 473
 W.S. 36
 SHEET 1 OF 1 SHEETS
 SCALES: VERT. 1" = 8'
 HORIZ. 1" = 40'
 NOVEMBER 1946.
 PREPARED IN THE OFFICES OF
GEORGE N. ADAMS
 BY *George N. Adams*
 REG. C.E. No. 132.



FOR LEGEND SEE PLAN No. S-O-84
 NOTE: GRADES TO WHICH THIS IMPROVEMENT IS TO BE CONSTRUCTED ARE SHOWN ON PLAN AND PROFILE. GRADE POINTS FOR TOP OF CURB ARE SHOWN BY CIRCLES ON PROFILE. ELEVATIONS ARE IN FEET ABOVE U.S.S. DATUM OR MEAN SEA LEVEL. THIS DRAWING AND DATA HEREON ARE HEREBY MADE A PART OF THE SPECIFICATIONS. WORK SHALL BE CONSTRUCTED ACCORDING TO THE SPECIFICATIONS ON FILE IN THE OFFICE OF THE COUNTY ENGINEER AND SHALL BE PROSECUTED ONLY IN THE PRESENCE OF THE COUNTY ENGINEER. BEFORE WORK CAN BE STARTED THE CONTRACTOR MUST OBTAIN A PERMIT FROM THE STATE OF CALIFORNIA, DIVISION OF HIGHWAYS, 808 STATE BUILDING AFTER MAKING A DEPOSIT WITH THE COUNTY ENGINEER, 700 FASHION LEAGUE BUILDING, SUFFICIENT TO COVER THE COST OF CONSTRUCTION INSPECTION AND RECORD PLANS.
 COUNTY OF LOS ANGELES, CALIFORNIA.
 APPROVED: *Walter J. Adams* COUNTY ENGINEER
 APPROVED: *George N. Adams* CHIEF ENGINEER COUNTY SANITATION DISTRICT No. 2

CHECKED BY *Paul R. Taylor* Dec. 16, 1946
 OFFICE OF COUNTY ENGINEER, REG. C.E. No. 6882
 Revision Checked by *C. J. Taylor* Dec. 16, 1946
 REG. C.E. No. 1592

BC 413



PC 586

2133-111
2133-111
2133-111
②

M3

M3