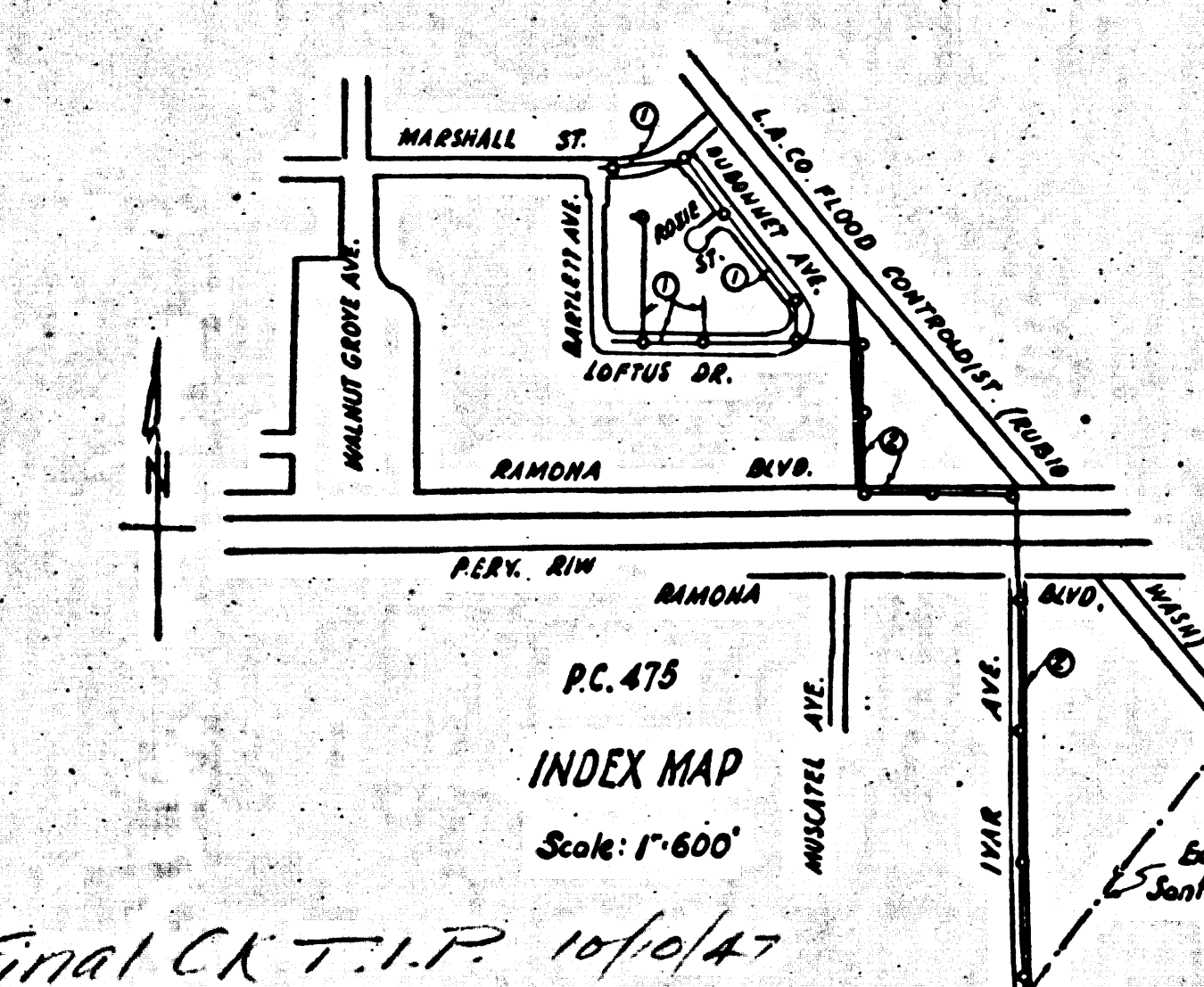
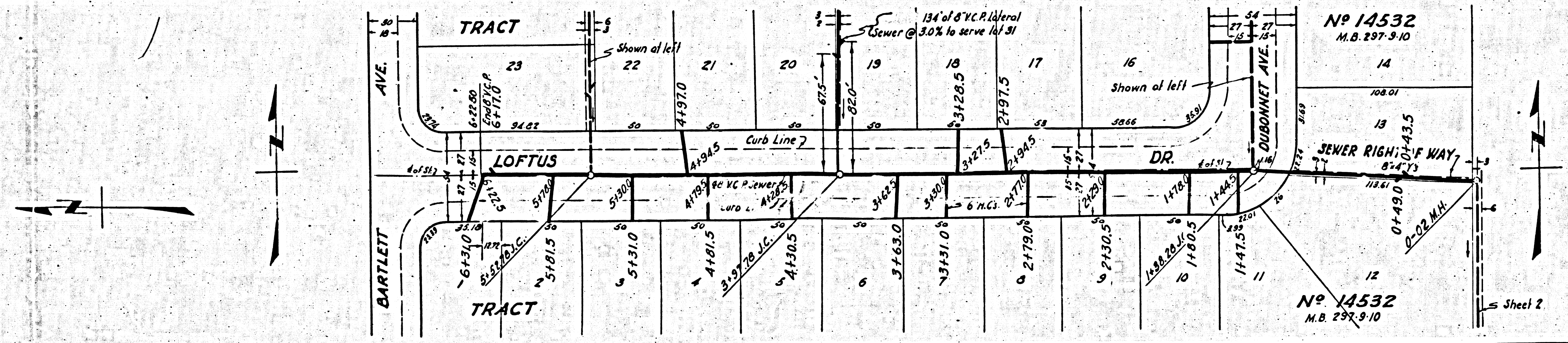


1. USE STANDARD MANHOLE FRAMES AND COVERS 5'-0" DIA. EXCEPT AS NOTED.
 2. USE STANDARD STRENGTH PIPE.
 3. USE CEMENT MORTAR FOR ALL VITRIFIED CLAY PIPE JOINTS.
 4. REINFORCE ALL TRENCHES WITH RAIL PAVED AREA TO MEET LOS ANGELES COUNTY ROAD DEPT. OR CALIFORNIA STATE HIGHWAY REQUIREMENTS.
 5. CONSTRUCT HOUSE CONNECTIONS WITH INVERT AT PROPER GRADE.
 6. ENCASE FOUR FEET OF SEWER AT POINTS OF INTERFERENCE WITH POLES, ETC.
 7. ALL STRUCTURES SHALL BE BRICK SEWER STRUCTURES 8'-0" DIA.
 8. CONSTRUCT TOPS OF ALL STRUCTURES IN RIGHTS OF WAY 6" ABOVE FINISHED GRADE.
- NOTE:
 NO REPRESENTATIVE OF THE COUNTY ENGINEER WILL SURVEY OR LAY OUT ANY PORTION OF THE WORK.
 THE OWNER OR HIS AUTHORIZED REPRESENTATIVE SHALL FURNISH THE COUNTY ENGINEER WITH GRADE SHEETS AND STATIONS OF ALL HOUSE CONNECTIONS AND BRANCHES AND SHALL PROVIDE STAKES FOR THEM AT THEIR PROPER LOCATIONS WITH STATIONING PLAINLY MARKED. ANY CHANGE OF LOCATION SHALL BE REQUESTED IN WRITING BY THE OWNER OR HIS REPRESENTATIVE.
 NO REVISIONS SHALL BE MADE IN THESE PLANS WITHOUT APPROVAL OF THE COUNTY ENGINEER.

PROFILE ALIGNMENT AND GRADE OF
SANITARY SEWERS
 TO BE CONSTRUCTED IN
LOFTUS DR.
 BETWEEN DUBONNET AVE. AND BARTLETT AVE.
DUBONNET AVE.
 BETWEEN LOFTUS DR. AND MARSHALL ST.
MARSHALL ST.
 BETWEEN DUBONNET AVE. AND BARTLETT AVE.
SANITARY SEWER RIGHTS OF WAY
 IN TRACT NO. 14532 M.B. 297-9-10
PRIVATE CONTRACT NO. 475
W.S. 44
SHEET 1 OF 2 SHEETS
 SCALE: VERT. 1" = 10'
 HORIZ. 1" = 40'
 APRIL 1947



FOR LEGEND
 SEE PLAN NO. 3-6-64

NOTE:
 GRADES TO WHICH THIS IMPROVEMENT IS TO BE CONSTRUCTED ARE SHOWN ON PLANS AND PROFILE. GRADE POINTS FOR TOP OF CURB, CENTER LINE OF STREET OR CENTER LINE OF ALLEY ARE SHOWN BY CIRCLES ON PROFILES AT ALL POINTS BETWEEN DESIGNATED POINTS. THE GRADE SHALL BE ESTABLISHED SO AS TO CONFORM TO A STRAIGHT LINE BETWEEN SAID DESIGNATED POINTS.
 ELEVATIONS ARE IN FEET ABOVE U.S.S. DATUM OF MEAN SEA LEVEL.
 THIS DRAWING AND THE DATA HEREON ARE MADE A PART OF THE SPECIFICATIONS.
 WORK SHALL BE CONSTRUCTED ACCORDING TO SPECIFICATIONS ON FILE IN THE OFFICE OF THE COUNTY ENGINEER AND SHALL BE PROSECUTED ONLY IN THE PRESENCE OF THE COUNTY ENGINEER. BEFORE WORK CAN BE STARTED THE CONTRACTOR MUST OBTAIN A PERMIT TO EXCAVATE IN COUNTY STREETS FROM THE LOS ANGELES ROAD DEPT. FOR HALL OF RECORDS, AND MAKE A DEPOSIT WITH THE COUNTY ENGINEER 100 POUNDS LEGAL TENDERS, SUFFICIENT TO COVER THE COST OF CONSTRUCTION INSPECTION AND RECORD PLANS.
 IF WORK IS TO BE DONE IN A STATE HIGHWAY, A PERMIT MUST BE OBTAINED FROM THE STATE OF CALIFORNIA, DIVISION OF HIGHWAYS, 808 STATE BUILDING, AFTER MAKING THE DEPOSIT WITH THE COUNTY ENGINEER.

COUNTY OF LOS ANGELES, CALIFORNIA

APPROVED *[Signature]*
 CHIEF COUNTY ENGINEER

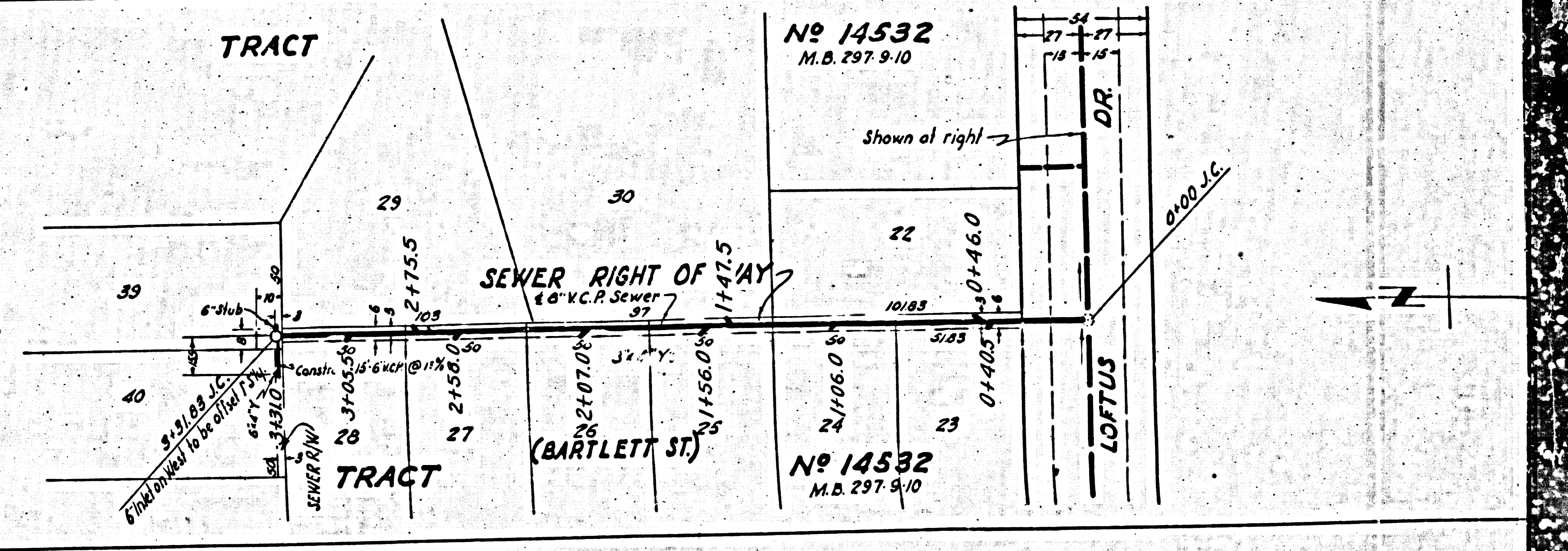
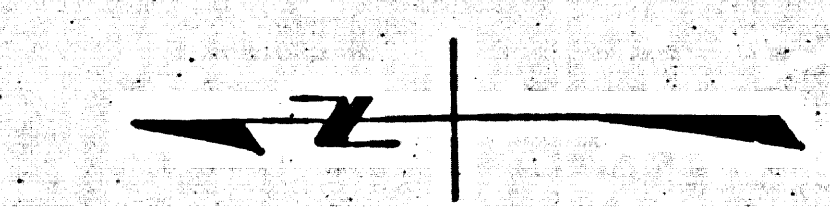
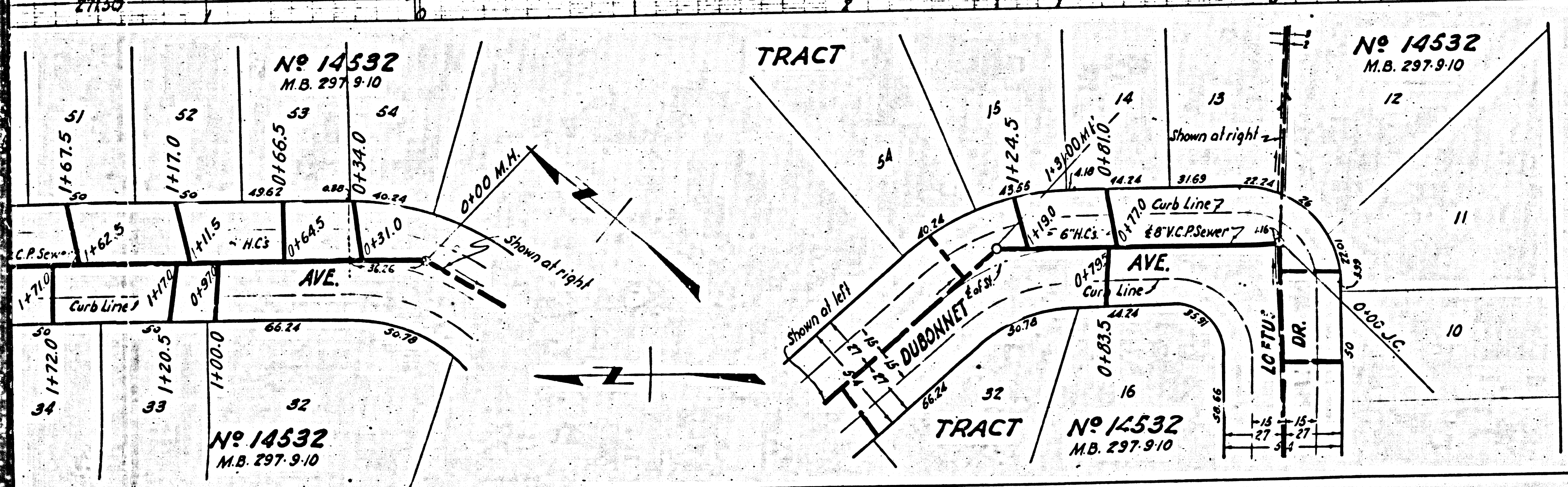
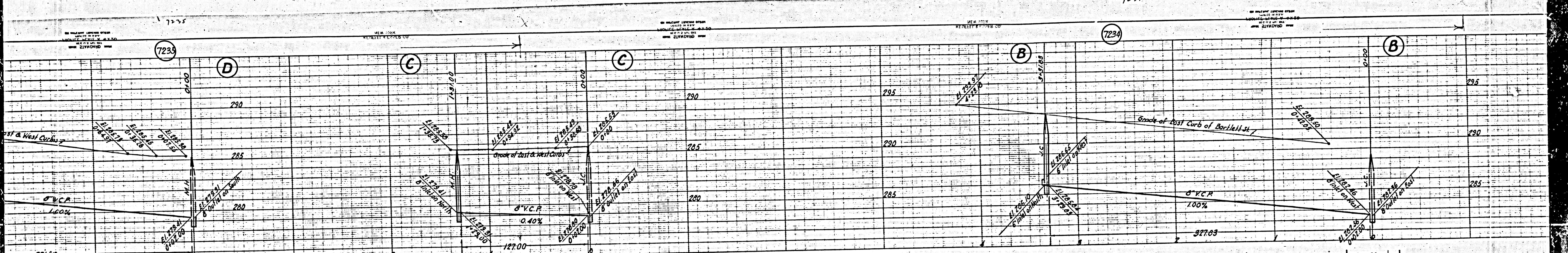
APPROVED *[Signature]*
 CHIEF ENGINEER OF COUNTY SANITATION DISTRICT NO. 6

CHECKED BY *[Signature]* Nov 1, 1947
 DEPT. OF COUNTY ENGINEER, 808 STATE BLDG.

INDEX MAP
 Scale: 1" = 600'
 Final C.K.T.P. 10/10/47

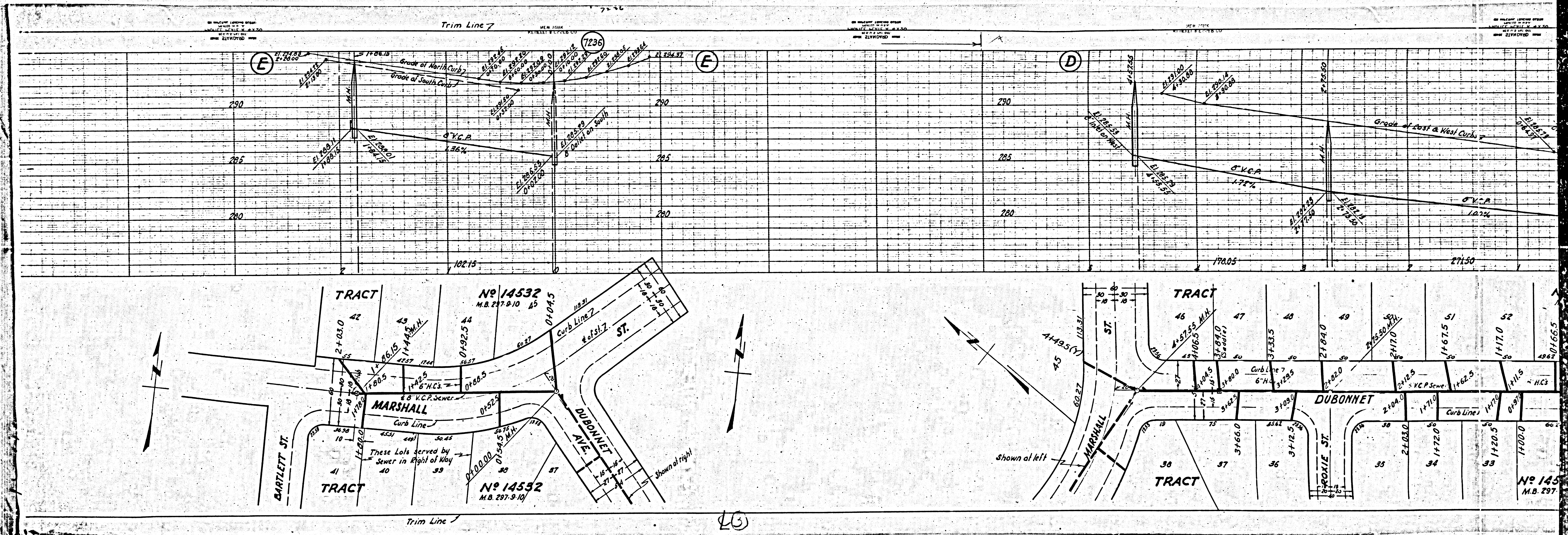
FC 475

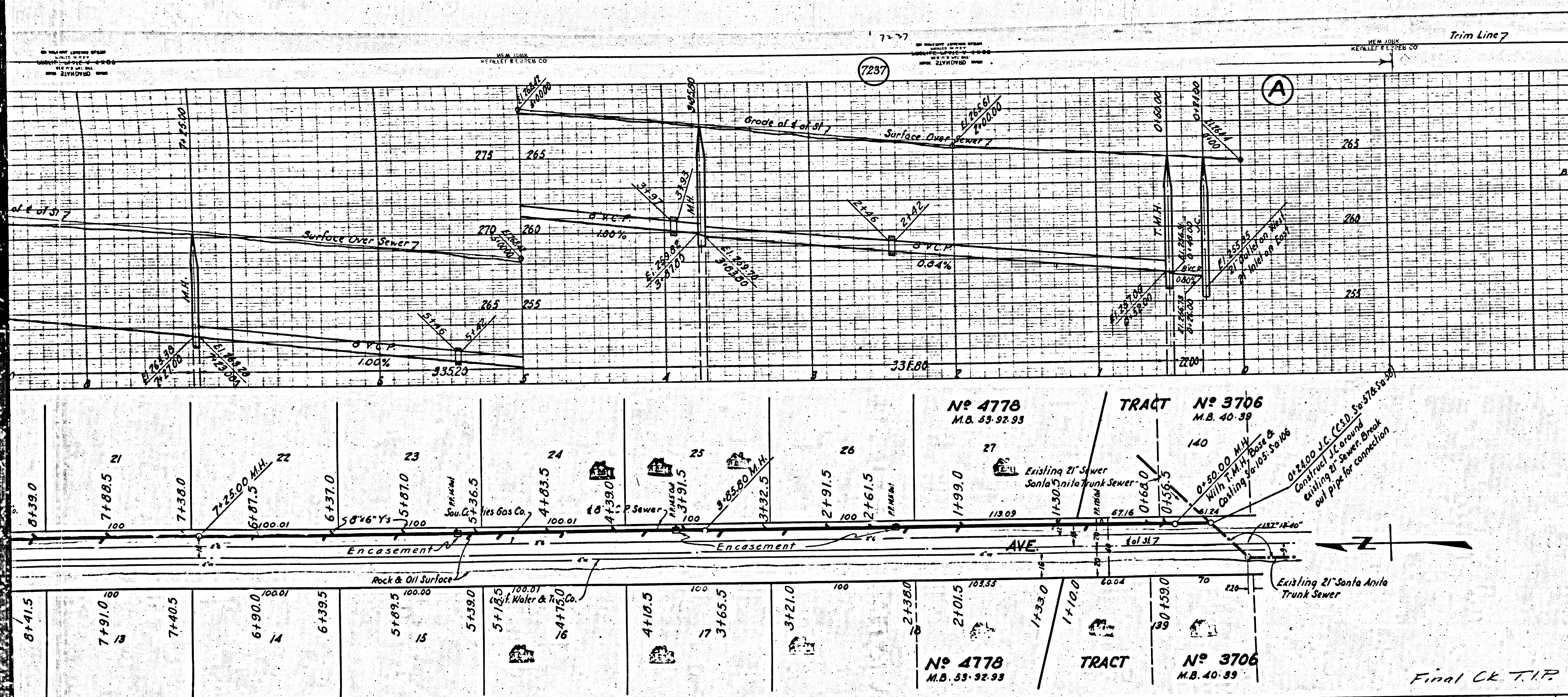
20



20

M6





PROFILE ALIGNMENT AND GRADE OF
SANITARY SEWERS
 TO BE CONSTRUCTED IN
IVAR AVE.
 BETWEEN SOUTHERLY LINE 1ST 1/2 AC. TR. NO. 3706 AND RAMONA BLVD. (N.)
RAMONA BLVD. (N.)
 BETWEEN WESTERLY LINE ROSEMEAD 1028-BLK. 7-M.B. 21-114-115
 AND A POINT 1/2 FEET EASTERLY BE CENTER LINE OF IVAR AVE. PROD.
SANITARY SEWER RIGHTS OF WAY
 IN ROSEMEAD 1028-BLK. 7-M.B. 21-114-115
PRIVATE CONTRACT NO. 475
W.S. 44
SHEET 2 OF 2 SHEETS
 SCALE: VERT. 1" = 4'

APRIL 1947
 PREPARED BY
S. H. Hall
 REG. C.E. NO. 5935

FOR LEGEND
 SEE PLAN NO. 5-64

FOR CONSTRUCTION NOTES SEE SHEET NO. 1
 COUNTY OF LOS ANGELES, CALIFORNIA.

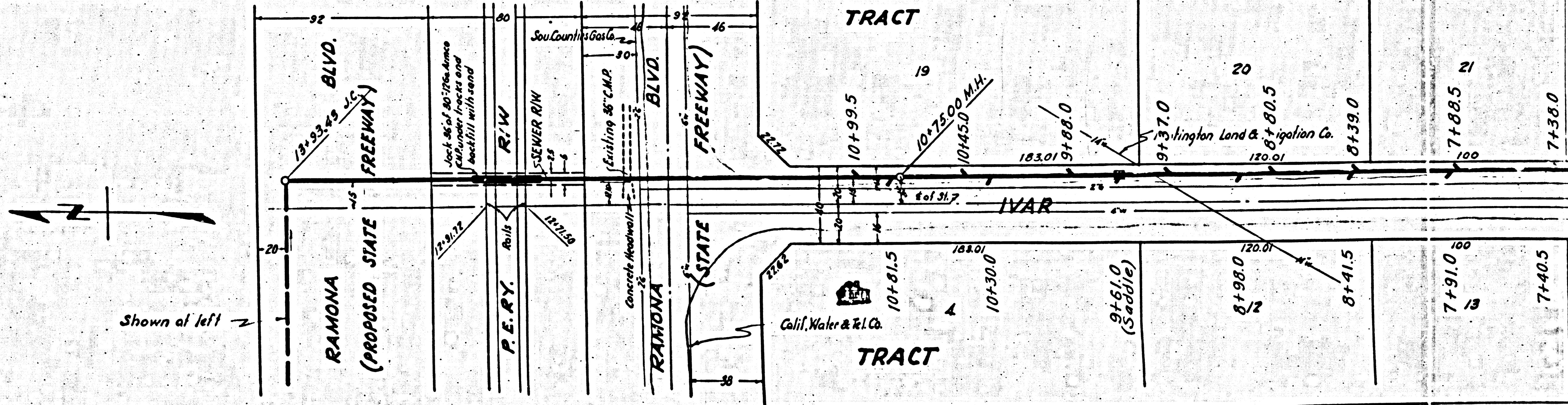
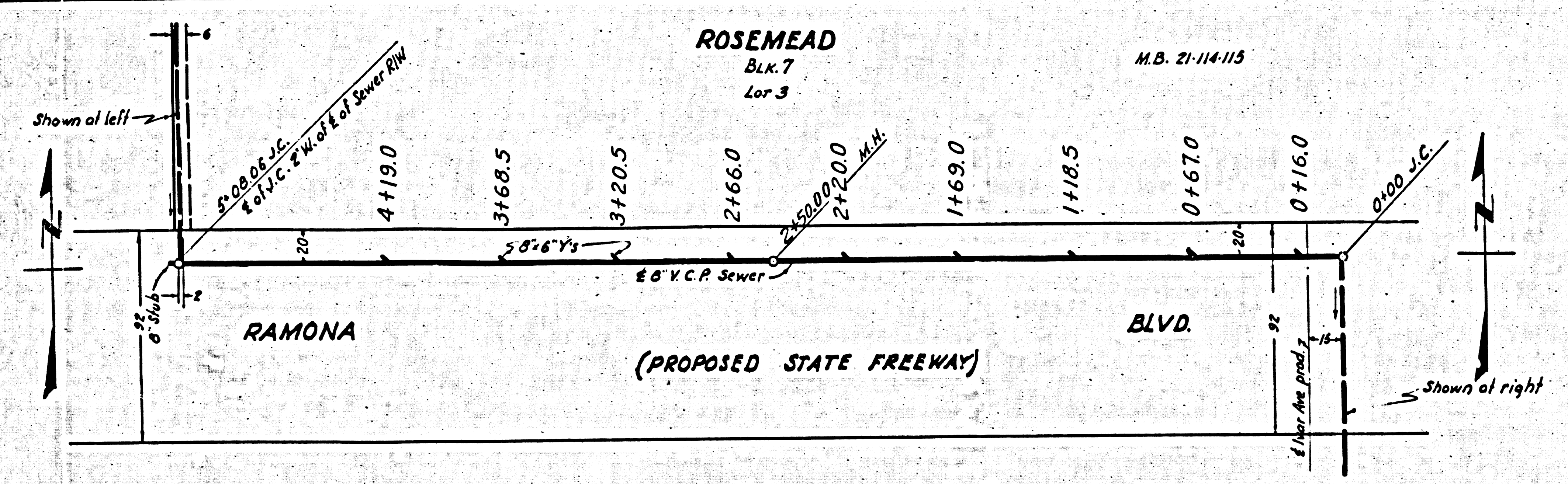
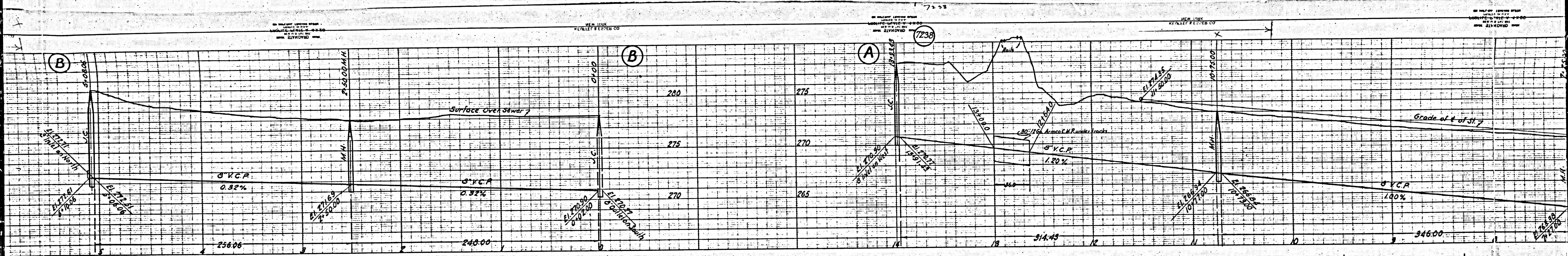
APPROVED
E. J. ...
 CHIEF DEPUTY COUNTY ENGINEER

APPROVED
 CHIEF ENGINEER OF COUNTY
 SANITATION DISTRICT NO. 42

CHECKED BY
W. B. ...
 DISTRICT ENGINEER, DIST. NO. 42

Final CR T.I.P. 10/10/47

D.C. 1152



②

