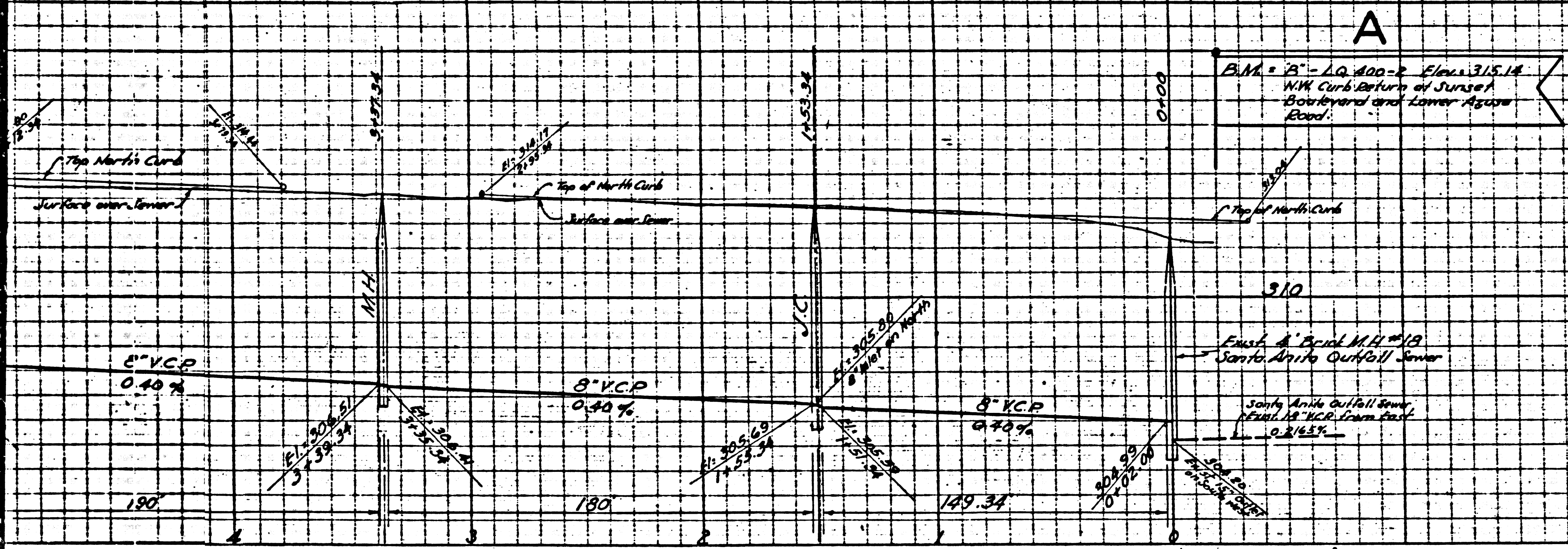


1069



- (1) USE STANDARD MANHOLE FRAME AND COVER, 36" DIA.
- (2) USE STANDARD STRENGTH PIPE (EXCEPT AS NOTED)
- (3) USE CEMENT MORTAR FOR ALL VITRIFIED CLAY PIPE JOINTS
- (4) REINFORCE ALL TRENCH WITHIN PAVED AREA TO MEET LOS ANGELES COUNTY ROAD DEPT REQUIREMENTS
- (5) CONSTRUCT HOUSE CONNECTIONS WITH INVERT AT THE PROPERTY LINE AT BRUSH PROPERTY GRADE OF ALLEY FRONTAGE
- (6) ENCASE FOUR FEET OF SEWER AT POINTS OF INTERFERENCE WITH POLES AS PER 10-6
- (7) ALL STRUCTURAL SHALL BE BRICK SEWER STRUCTURES, 12" DIA
- (8) CONSTRUCT JOINTS OF ALL STRUCTURES IN BRICK, OR MAX 6" ABOVE FINISHED GRADE

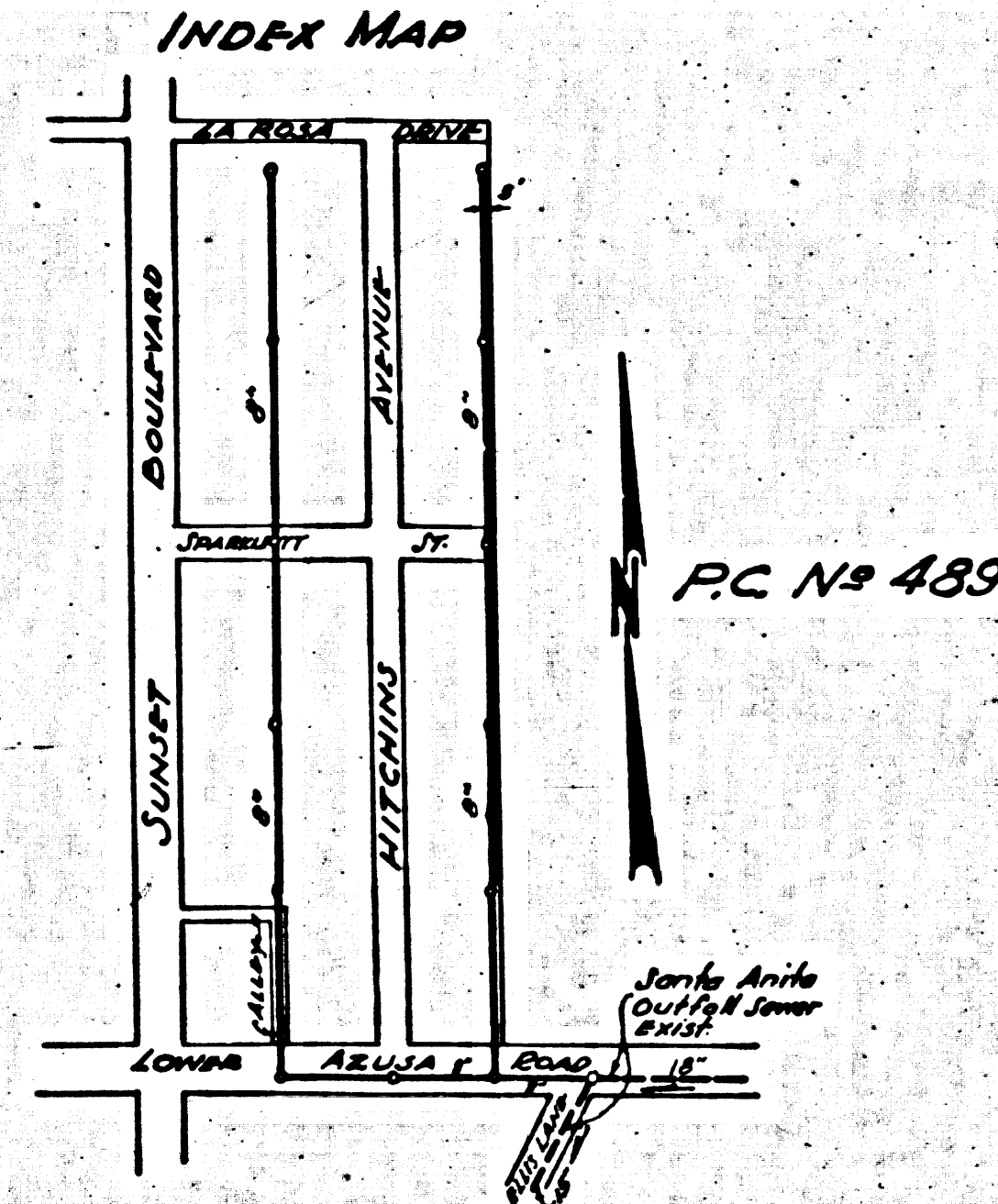
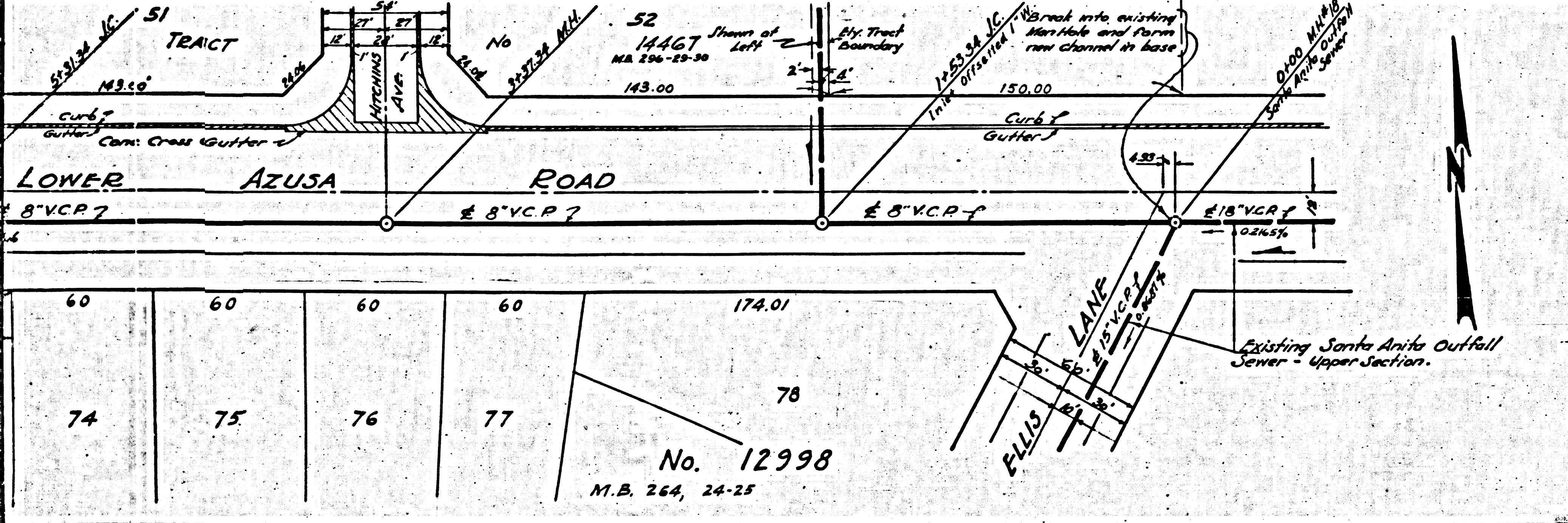
Note: No representative of the County Engineer will survey or layout any portion of the work. The owner or his authorized representative shall furnish the County Engineer with grade sheets and stations of all house connections and all trenches and shall provide water for them at their proper locations, with the following plans marked, any change of location shall be reported in writing by the owner or his representative. No revision shall be made in these plans without approval of the County Engineer.

PROFILE, ALIGNMENT AND GRADE OF
SANITARY SEWERS
 TO BE CONSTRUCTED IN
LOWER AZUSA ROAD
 FROM ALLEY EAST OF SUNSET BOULEVARD TO MANHOLE AT ELLIS LANE
ALLEY EAST OF SUNSET BLVD - SANITARY SEWER 8" DIA
 BETWEEN LOWER AZUSA ROAD AND LA ROSA DRIVE

SANITARY SEWER RIGHT OF WAY
 ALONG EASTEELY TRACT BOUNDARY
 IN TRACT NO. 14467
 PRIVATE CONTRACT NO. 489
 W.S. 44
 SHEET 1 OF 1 SHEET
 JANUARY 1947

SCALE: VERT. 1" = 4'
 HOR. 1" = 40'
 PREPARED IN THE OFFICES OF

KARL P. TUTTLE CIVIL ENGINEER
 KARL P. TUTTLE
 801 N. TULHO - R.F. 2000



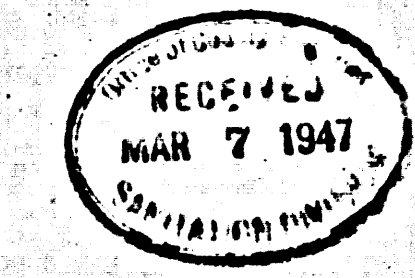
NOTE: GRADES TO WHICH THIS IMPROVEMENT IS TO BE CONSTRUCTED ARE SHOWN ON PLANS AND PROFILES. GRADE POINTS FOR TOP OF CURB & CENTER LINE OF ALLEY ARE SHOWN BY CIRCLES ON PROFILES. AT ALL POINTS BETWEEN DESIGNATED POINTS THE GRADE SHALL BE ESTABLISHED SO AS TO CONFORM TO A STRAIGHT LINE DRAWN BETWEEN SAID DESIGNATED POINTS. ELEVATIONS ARE IN FEET ABOVE U.S.C.S. MEAN SEA LEVEL. THIS DRAWING AND THE DATA HEREON ARE HEREBY MADE A PART OF THE SPECIFICATIONS. WORK SHALL BE CONSTRUCTED ACCORDING TO SPECIFICATIONS ON FILE IN THE OFFICE OF THE COUNTY ENGINEER AND SHALL BE PROSECUTED ONLY IN THE PRESENCE OF THE COUNTY ENGINEER. GRADE WORK CAN BE STARTED. THIS CONTRACTOR MUST OBTAIN A PERMIT TO EXCAVATE IN COUNTY STREETS FROM THE L.A. COUNTY ROAD DEPT, 104 N. HALL OF RECORDS, AND MAKE A DEPOSIT WITH THE COUNTY ENGINEER, 700 FAUNTON LEAGUE BLDG, SUFFICIENT TO COVER THE COST OF CONSTRUCTION, INSPECTION AND RECORD PLANS.

COUNTY OF LOS ANGELES, CALIFORNIA

APPROVED: *Alfred Jones*
 County Engineer

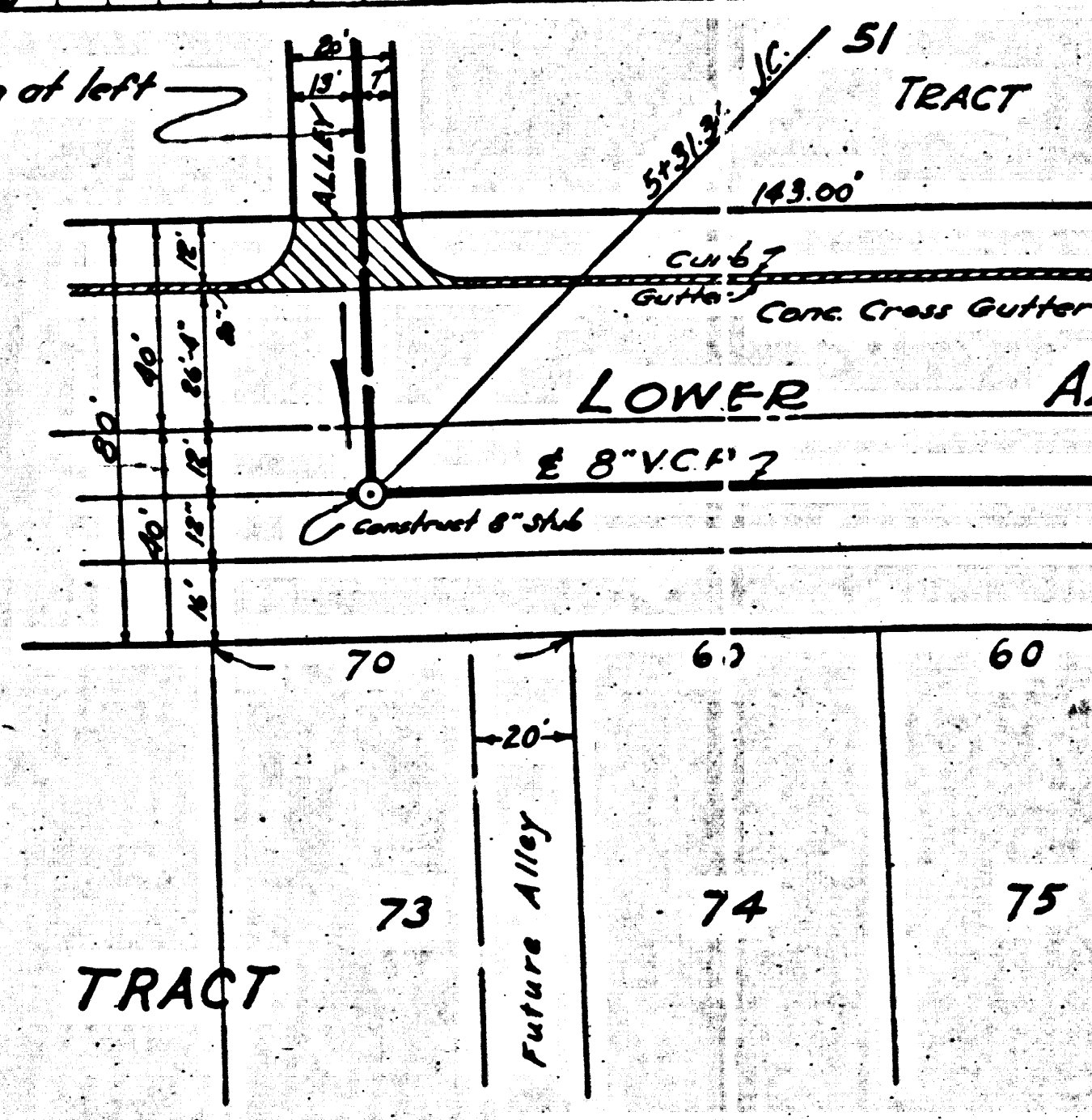
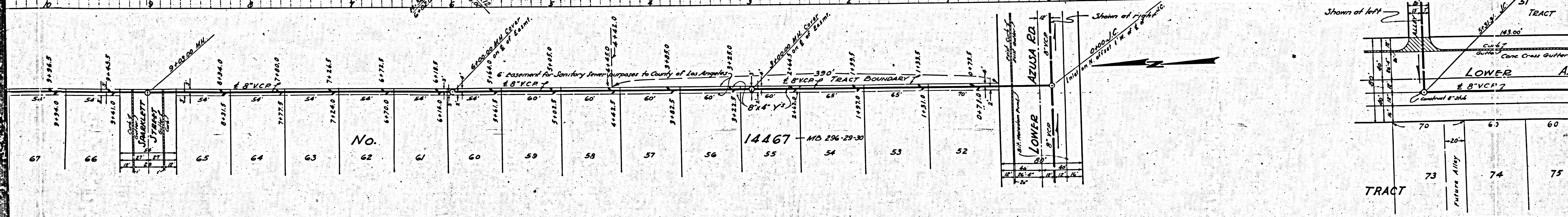
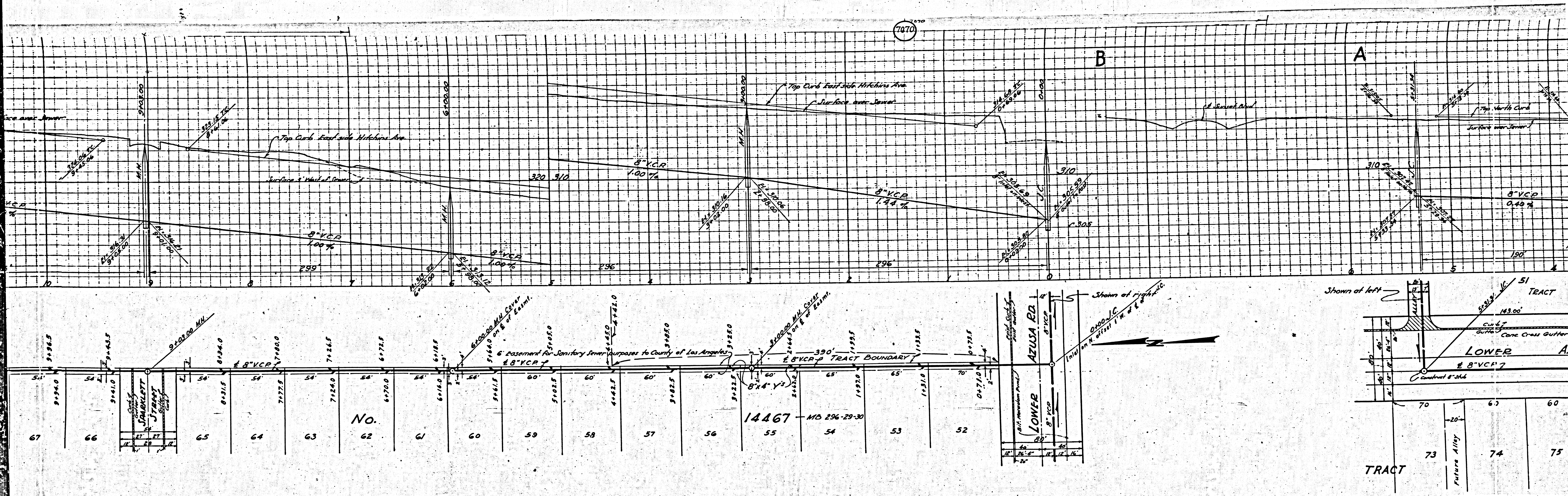
APPROVED: *Carl P. Tuttle*
 CIVIL ENGINEER

CHECKED BY: *Carl P. Tuttle* Feb 24, 1947
 CIVIL ENGINEER



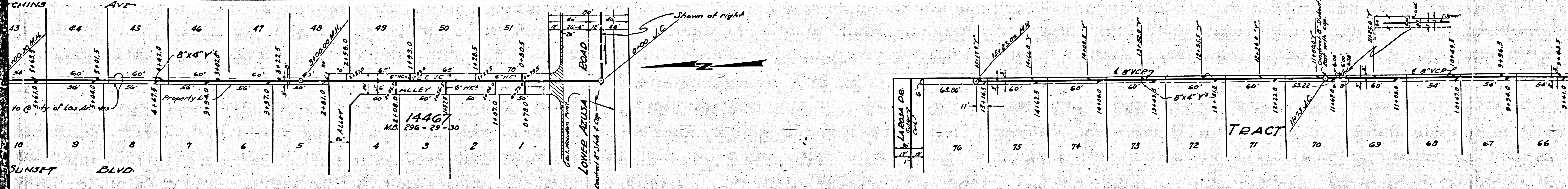
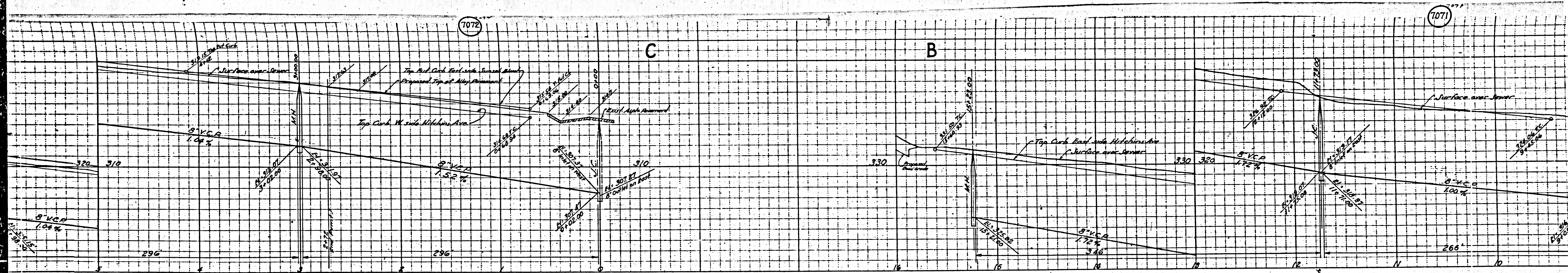
Final C.T.P. 7/10/47

①



M3

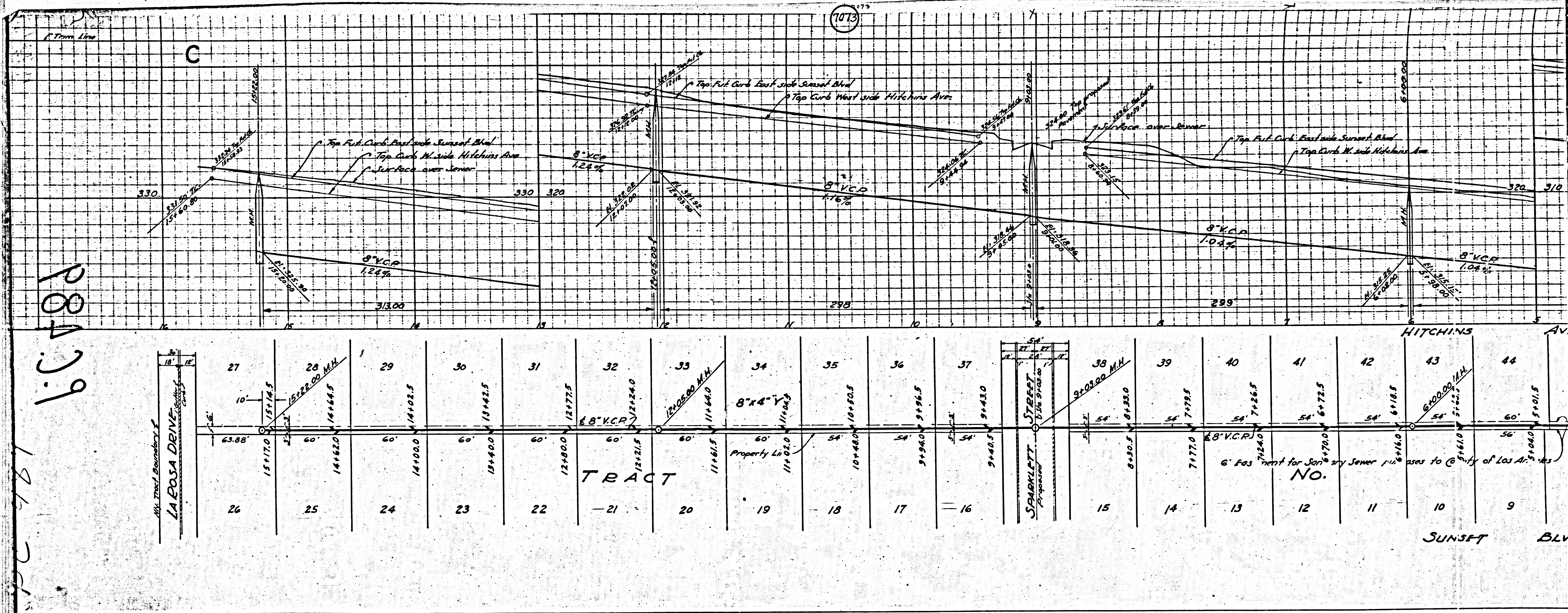
M8



③

M5

M8



18479

18479

④

M5

M6