

- 1974
- (1) Use Standard Manhole Frames and Covers, S.A. 117.
 - (2) Use Standard Straight Pipe.
 - (3) Use Cement Mortar for all Vitrified Clay Pipe Joints.
 - (4) Resurface all Trench within paved Area to meet Los Angeles County Road Dept. Requirements.
 - (5) Excise four feet of sewer at points of interference with poles as per S.A. 117.
 - (6) Construct tops of manholes in rights of way six inches above finished grade.
 - (7) Sewer structures shall be brick structures per S.A. 117.

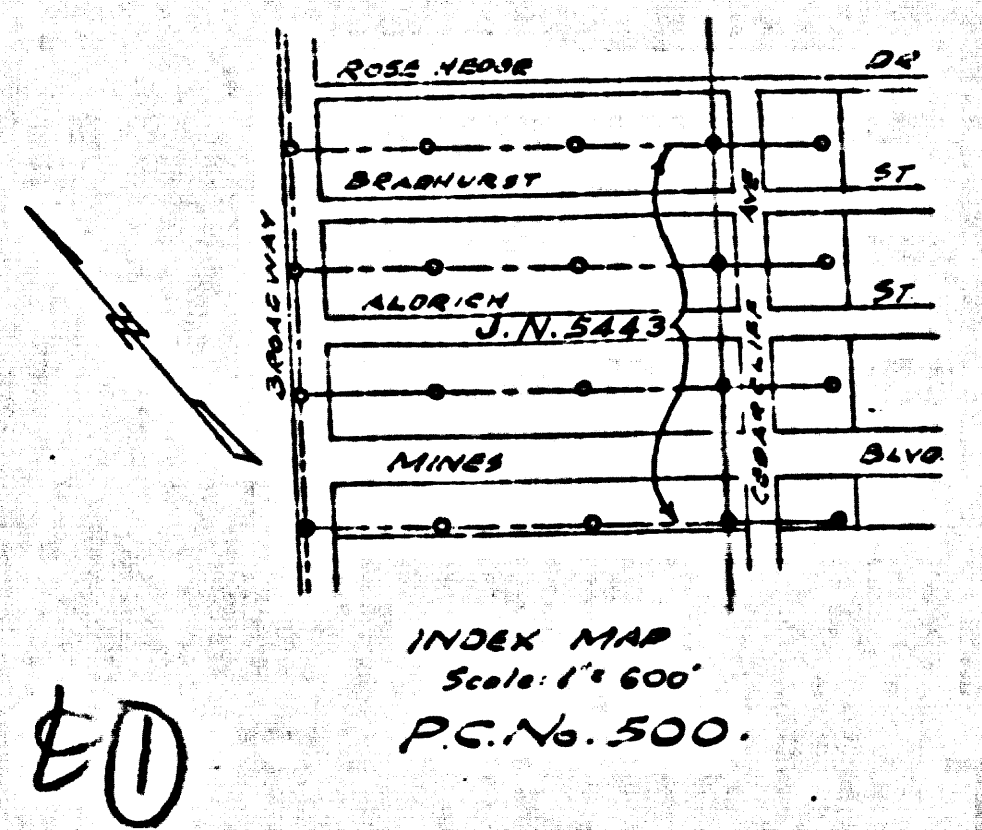
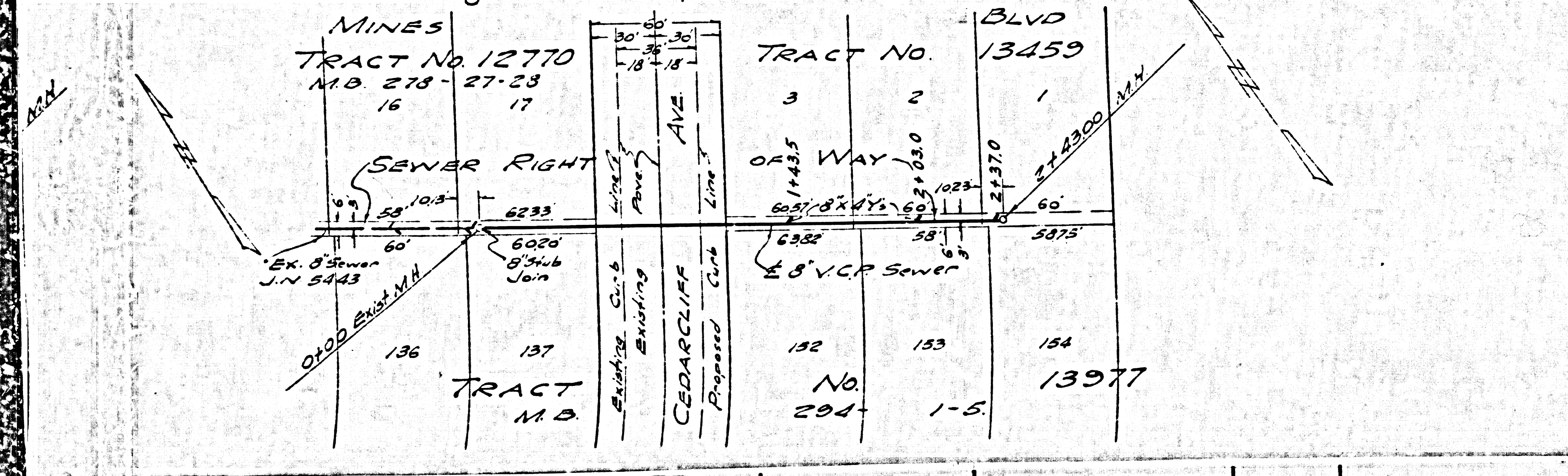
D.M. Elev. 174.576
 L.A. Co. 281 N of Seal
 Cedar Cliff Canal
 Medical Broadway

Note: No representation of the County Engineer will survey or lay out any portion of the work. The owner or his authorized representative shall furnish the County Engineer with grade stakes and elevations at all manholes, connections and structures, and shall provide stakes for him at their proper locations with staking plainly marked. Any change of location shall be requested in writing by the Owner or his representative. No variation shall be made in these plans without approval of the County Engineer.

PROFILE, ALIGNMENT AND GRADE OF
SANITARY SEWERS
 TO BE CONSTRUCTED IN
SANITARY SEWER RIGHT OF WAY
 IN TRACT NO. 13459

PRIVATE CONTRACT NO. 500
 W.S. 37
 ONE SHEET
 SCALES: VERT. 1" = 4'
 HOR. 1" = 40'
 FEBRUARY 1947

PREPARED IN THE OFFICES OF JOHN M. KEMMERER,
 Reg. C.E. No. 177



FOR LEGEND
 SEE PLAN No. S-a-64

NOTE:
 GRADES TO WHICH THIS IMPROVEMENT IS TO BE CONSTRUCTED ARE SHOWN ON PLANS AND PROFILE. GRADE POINTS FOR TOP OF CURB, CENTER LINE OF STREET OR CENTER LINE OF ALLEY ARE SHOWN BY CIRCLES ON PROFILES. AT ALL POINTS BETWEEN DESIGNATED POINTS THE GRADE SHALL BE ESTABLISHED SO AS TO CONFORM TO A STRAIGHT LINE DRAWN BETWEEN SAID DESIGNATED POINTS. ELEVATIONS ARE IN FEET ABOVE U.S.G.S. DATUM OR MEAN SEA LEVEL.

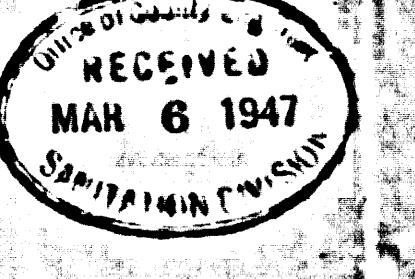
THIS DRAWING AND THE DATA HEREON ARE HEREBY MADE A PART OF THE SPECIFICATIONS. WORK SHALL BE CONSTRUCTED ACCORDING TO SPECIFICATIONS ON FILE IN THE OFFICE OF THE COUNTY ENGINEER AND SHALL BE PROSECUTED ONLY IN THE PRESENCE OF THE COUNTY ENGINEER. BEFORE WORK CAN BE STARTED, THE CONTRACTOR MUST OBTAIN A PERMIT TO EXCAVATE IN COUNTY STREETS FROM THE L.A. COUNTY ROAD DEPT., 1104 HALL OF RECORDS, AND MAKE A DEPOSIT WITH THE COUNTY ENGINEER, 700 FASHION LEAGUE BLDG., SUFFICIENT TO COVER THE COST OF CONSTRUCTION INSPECTION AND RECORD PLANS.

COUNTY OF LOS ANGELES, CALIFORNIA.

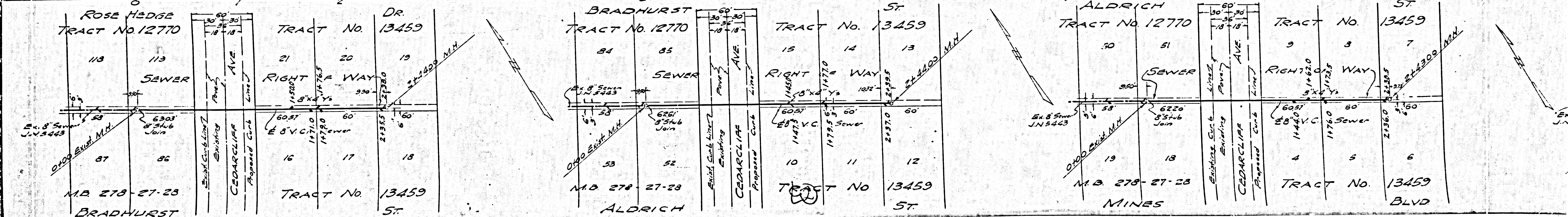
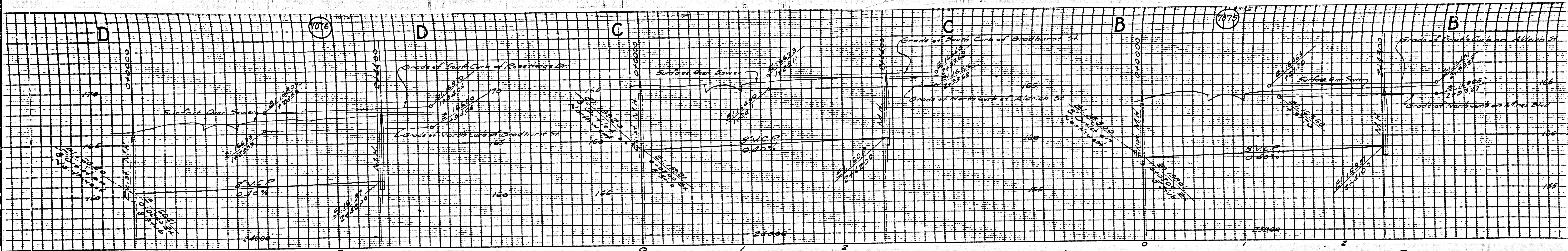
APPROVED *John M. Kemmerer*
 COUNTY ENGINEER

APPROVED *Carlson*
 CHIEF ENGINEER OF COUNTY
 SANITATION DISTRICT NO. 2

CHECKED BY *John O. Kern* Feb 28, 1947
 OFFICE OF COUNTY ENGINEER,
 REG. C.E. NO. 6622



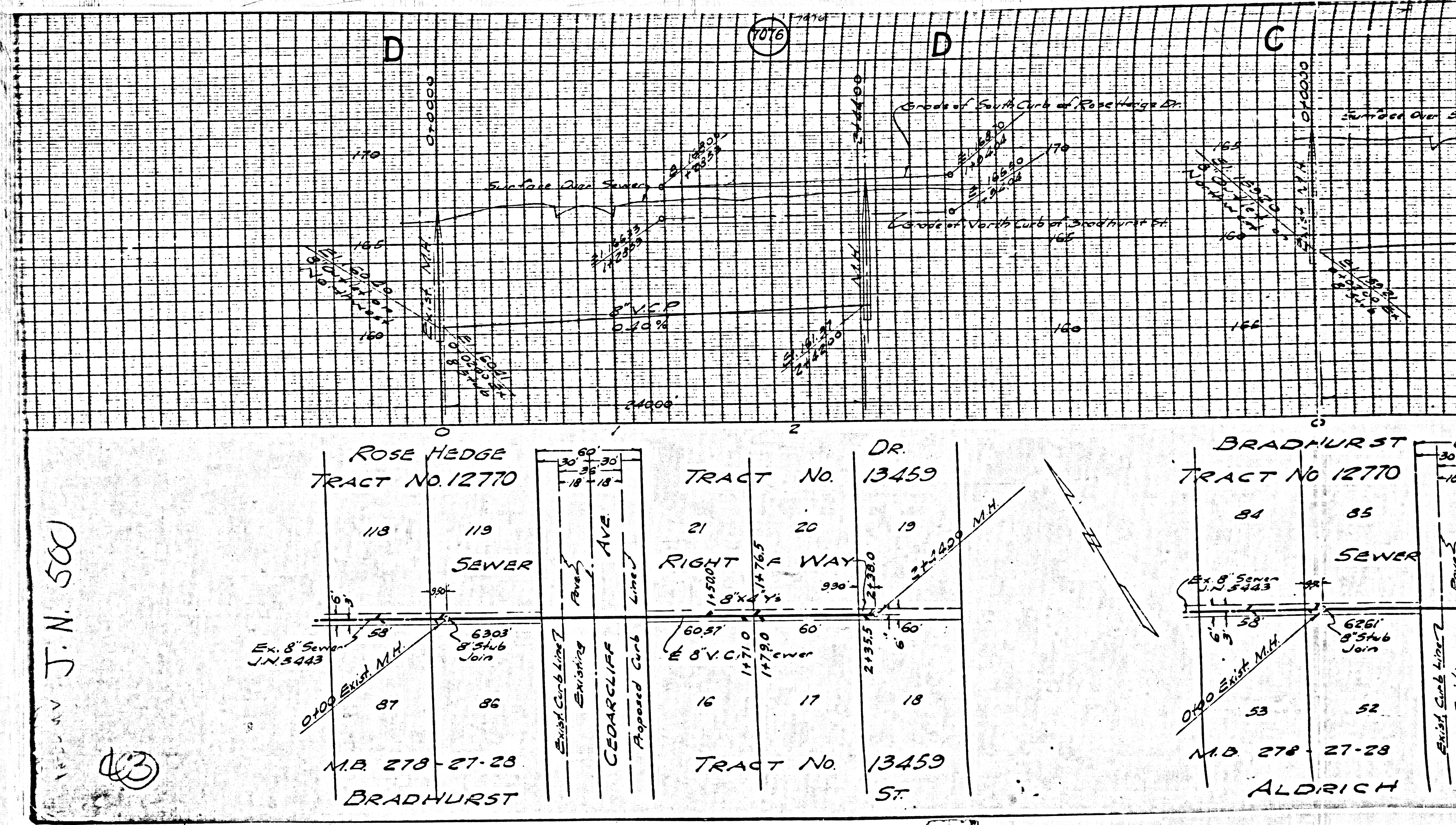
Final Ck T.R.P. 7/10/47



ROSE HEDGE
 TRACT NO. 12770
 118 113
 SEWER
 6303
 8" 54" 6
 Join
 87 86
 M.B. 278-27-28
 BRADHURST ST.

BRADHURST
 TRACT NO. 12770
 84 85
 SEWER
 6251
 8" 54" 6
 Join
 53 52
 M.B. 278-27-28
 ALDRICH ST.

ALDRICH
 TRACT NO. 12770
 50 51
 SEWER
 6220
 8" 54" 6
 Join
 19 18
 M.B. 278-27-28
 MINES BLVD.

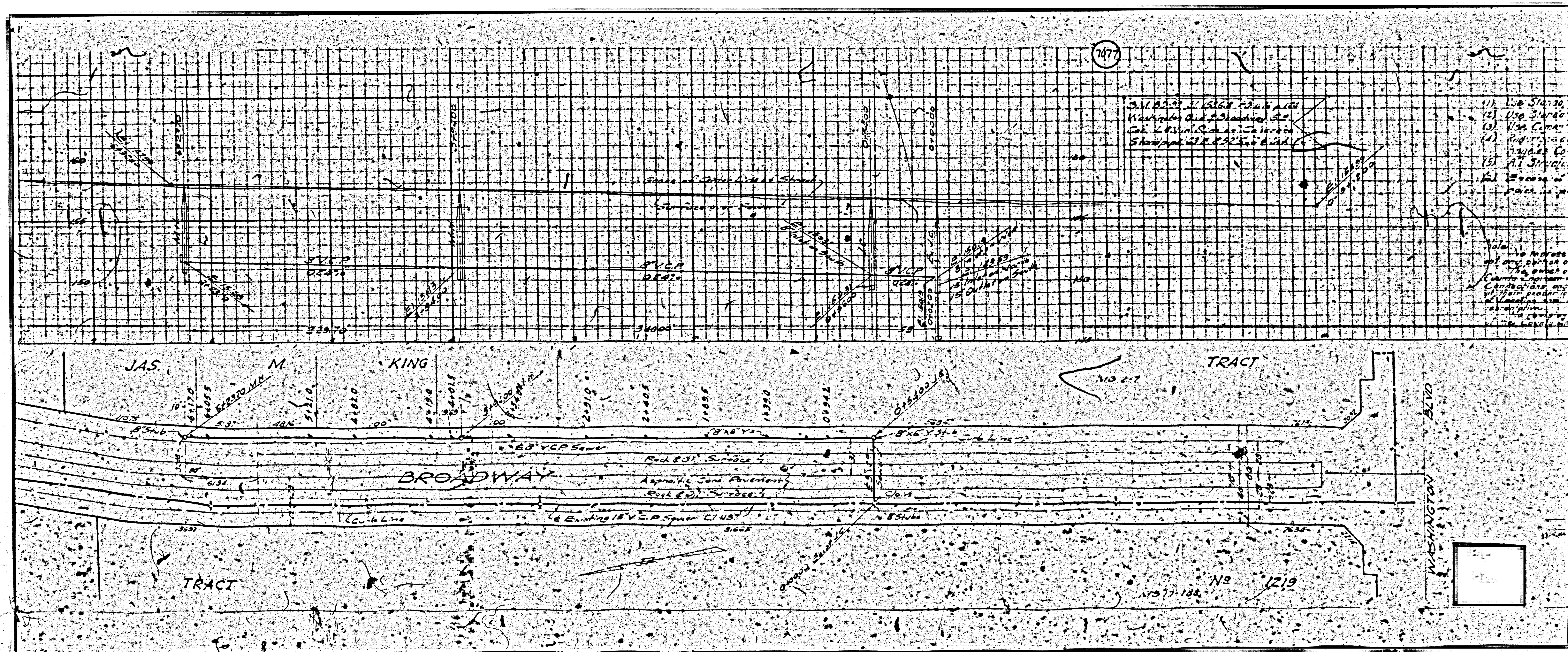


J.N. 500

(13)

ROSE HEDGE TRACT NO. 12770		TRACT No. 13459			BRADHURST TRACT No. 12770	
118	119	21	20	19	84	85
SEWER		RIGHT OF WAY			SEWER	
6303 8" Stub Join		6057 14710 14720 14765 E 8" V.C.P. Sewer 930'			6261 8" Stub Join	
87	86	16	17	18	53	52
M.B. 278-27-28 BRADHURST		TRACT No. 13459 ST.			M.B. 278-27-28 ALDRICH	

1477



1. Use Standard
2. Use Standard
3. Use Standard
4. Use Standard
5. Use Standard
6. Use Standard
7. Use Standard
8. Use Standard
9. Use Standard
10. Use Standard

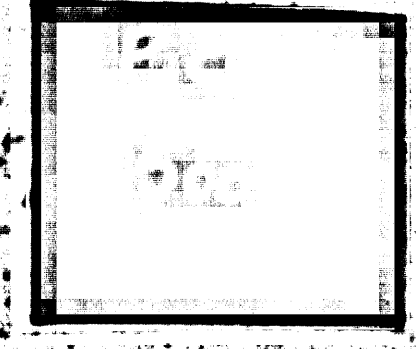
1. Use Standard
2. Use Standard
3. Use Standard
4. Use Standard
5. Use Standard
6. Use Standard
7. Use Standard
8. Use Standard
9. Use Standard
10. Use Standard

1. Use Standard
2. Use Standard
3. Use Standard
4. Use Standard
5. Use Standard
6. Use Standard
7. Use Standard
8. Use Standard
9. Use Standard
10. Use Standard

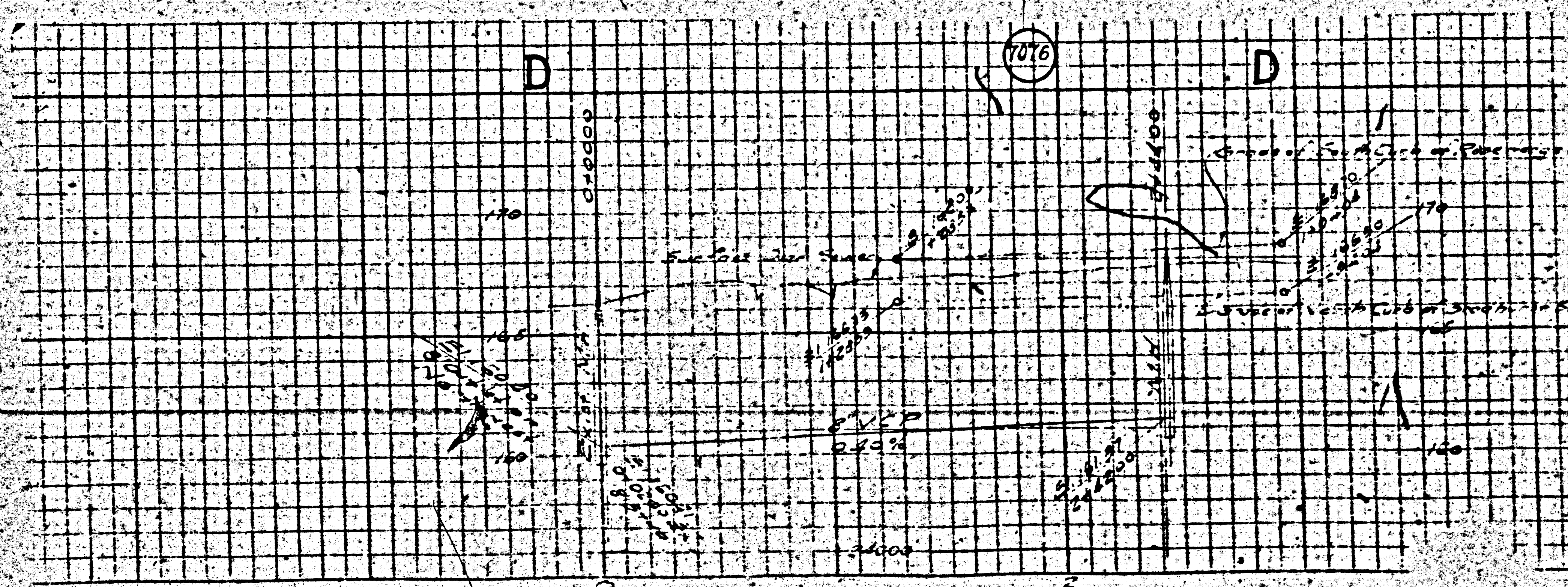
TRACT

TRACT

WASHINGTON BLVD



2



ROSE HEDGE
TRACT NO. 12770

SEWER

CECILIUS AVE

RIGHT OF WAY

TRACT NO. 13459

TRACT NO. 13459

BRADNURST

DR

118

119

120

121

122

123

124

125

126

127

128

129

130

131

132

133

134

135

136

137

138

139

140

141

142

143

144

145

146

147

148

149

150

151

152

153

154

155

156

157

158

159

160

161

162

163

164

165

166

167

168

169

170

171

172

173

174

175

176

177

178

179

180

181

182

183

184

185

186

187

188

189

190

191

192

193

194

195

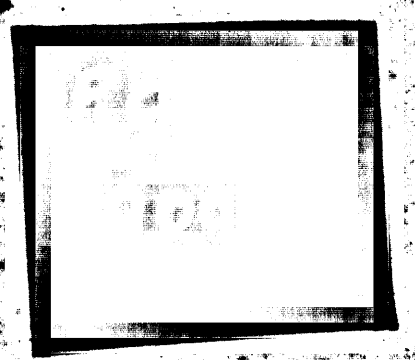
196

197

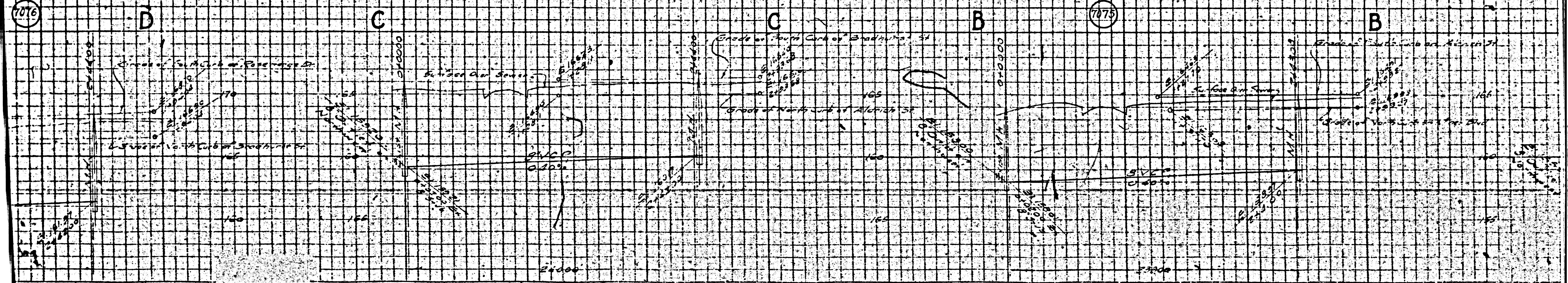
198

199

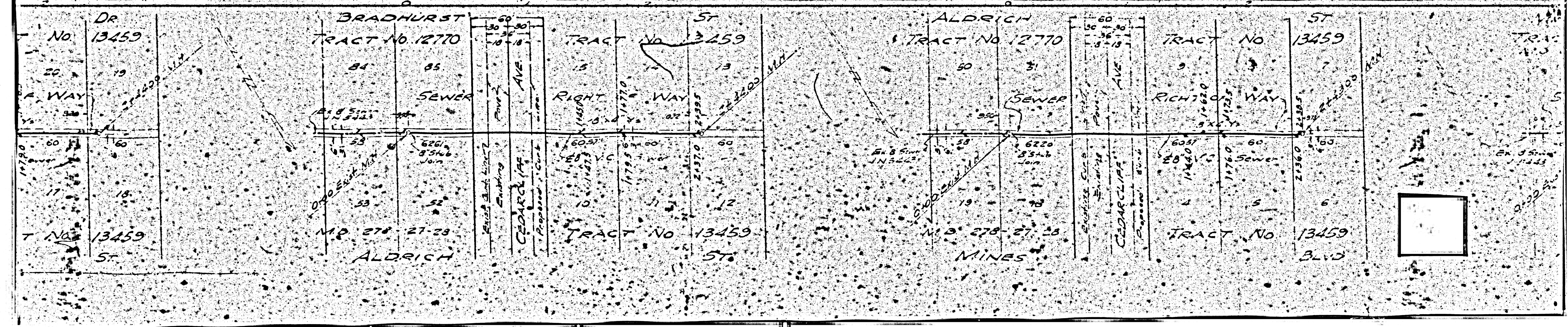
200

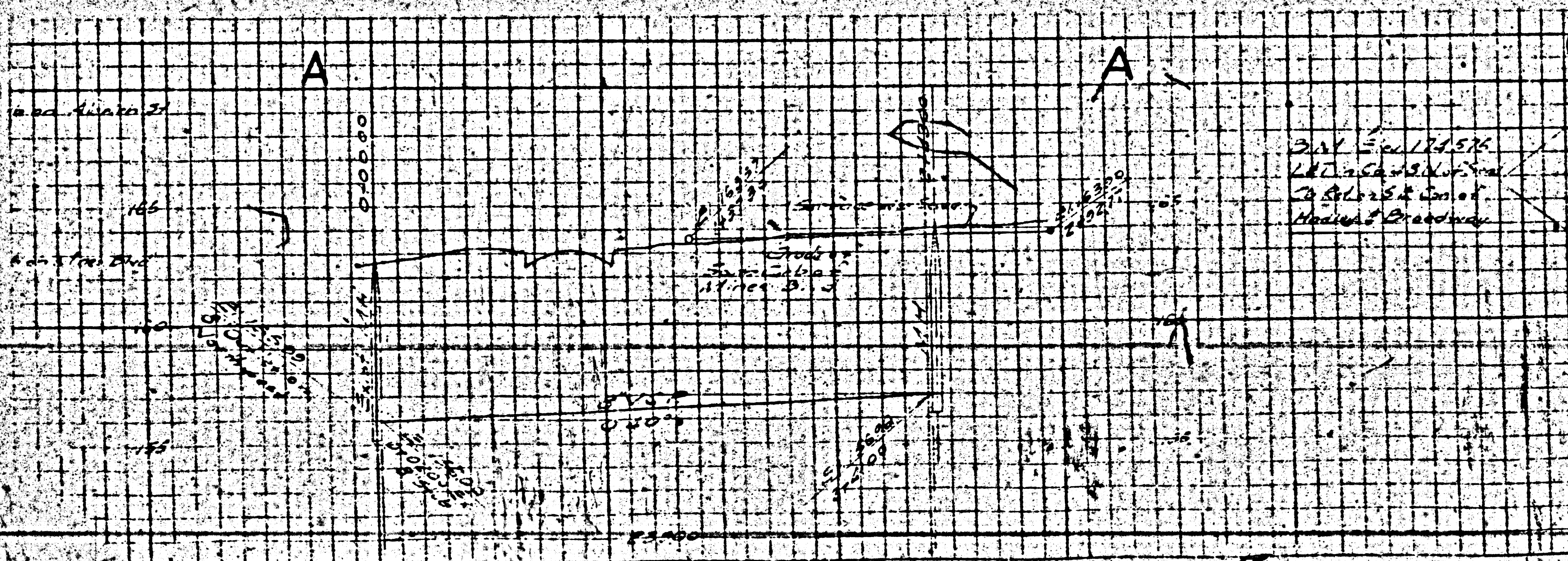


1076



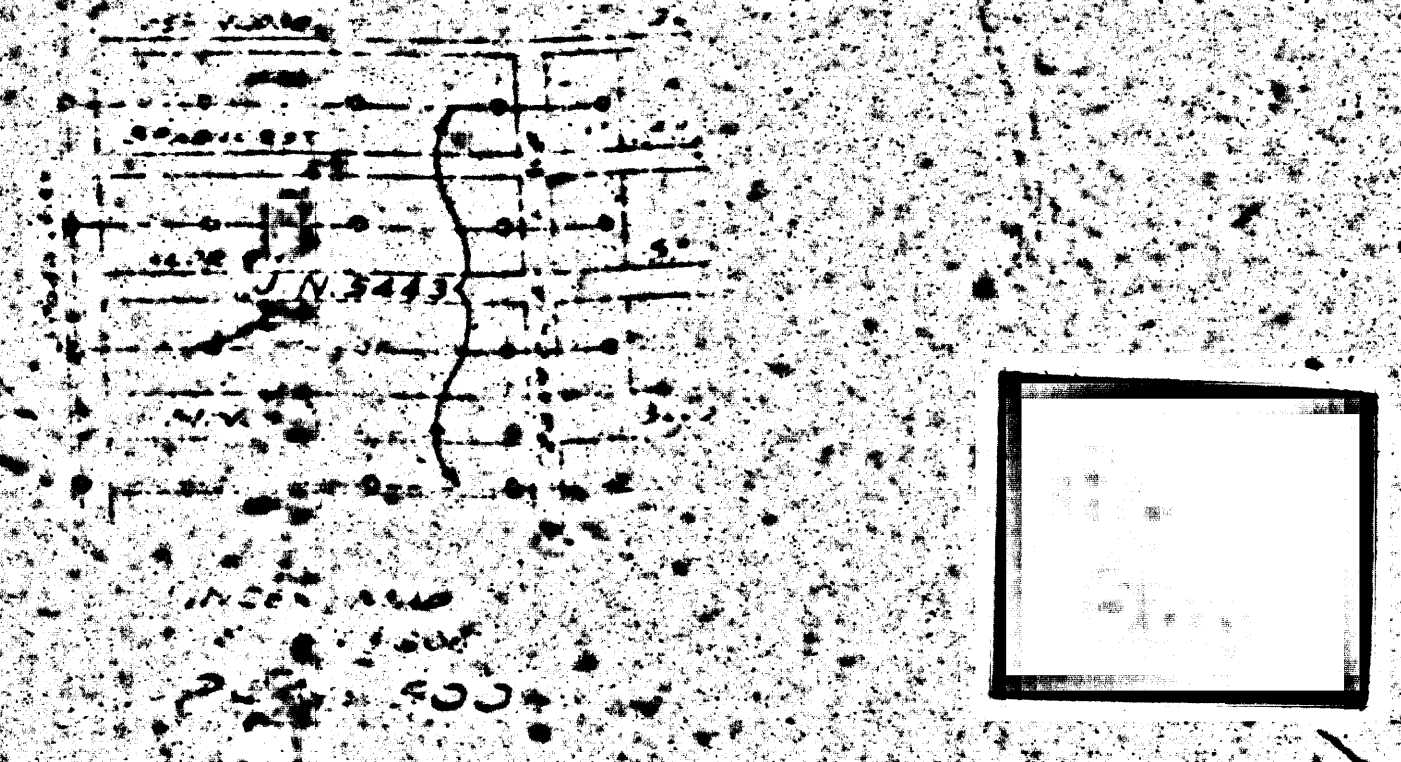
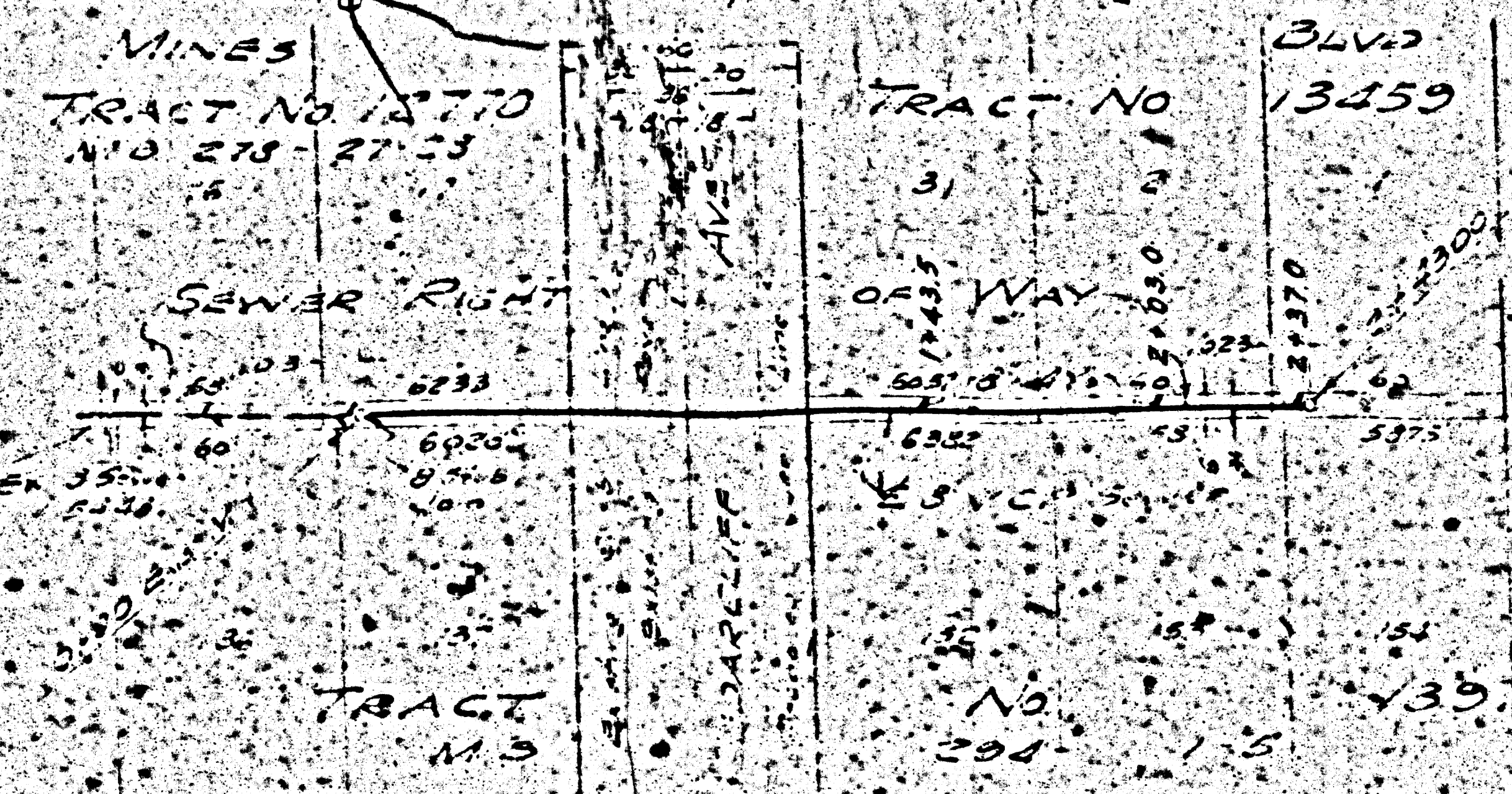
1075





- 1974
- (1) Use Standard Manholes, Frames and Covers, S. & C.
 - (2) Use Standard Sewer Pipe.
 - (3) Use Concrete for all Manholes, Pipe Joints.
 - (4) Resurface all Tract within road area to meet City of Dallas County Road Dept. Requirements.
 - (5) Encase four feet of sewer at points of intersection with roads to 5 ft. 6 in.
 - (6) Construct tops of manholes in grade of way six inches above finished grade.
 - (7) Sewer structures shall be as per structures per S. & C.

Note: No responsibility of the County Engineer is assumed for any portion of the work. The County Engineer shall not be held responsible for any errors or omissions in the drawings and specifications and the County Engineer shall not be held responsible for any errors or omissions in the work or for any damage to property or persons resulting from the work.



NOTE:
 1. ALL
 2. ALL
 3. ALL
 4. ALL
 5. ALL
 6. ALL
 7. ALL
 8. ALL
 9. ALL
 10. ALL