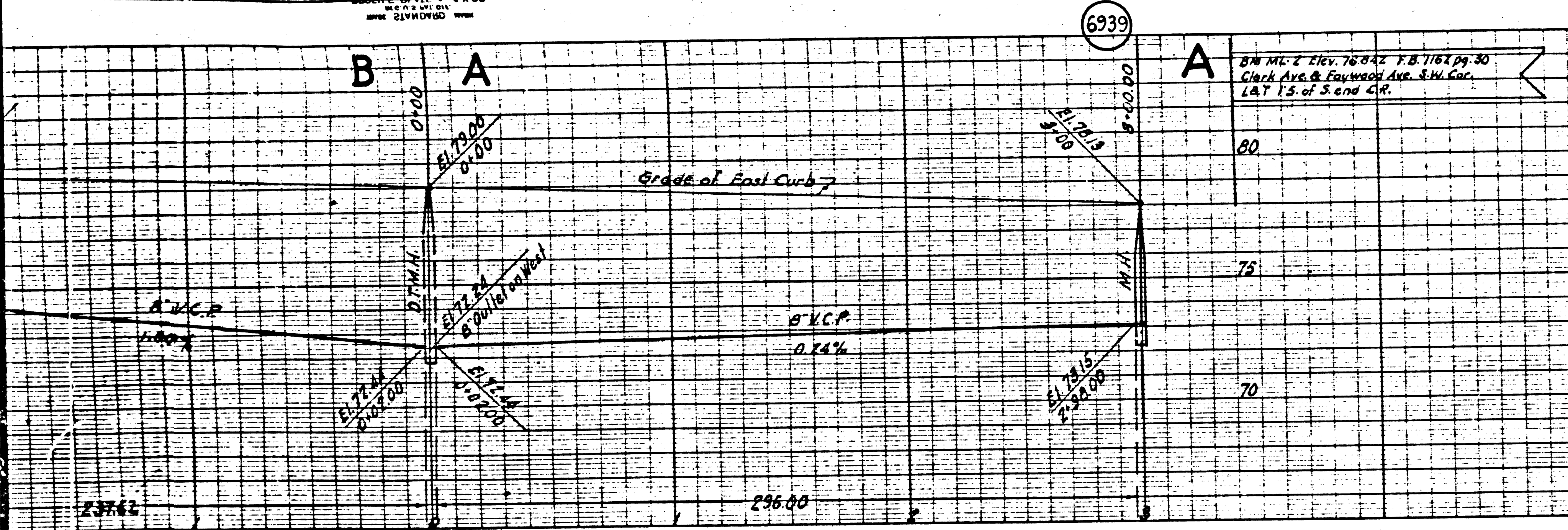


Trim Line 7



- 1. USE STANDARD MANHOLE FRAMES AND COVERS S. 117
- 2. USE STANDARD STRENGTH PIPE
- 3. USE CEMENT MORTAR FOR ALL VITRIFIED CLAY PIPE JOINTS
- 4. RESURFACE ALL TRENCH WITHIN PAVED AREA TO MEET LOS ANGELES COUNTY ROAD DEPT. REQUIREMENTS
- 5. ENCASE FOUR FEET OF SEWER AT POINTS OF INTERFERENCE WITH POLES AS PER S. 106
- 6. ALL STRUCTURES SHALL BE BRICK SEWER STRUCTURES S. 104

NOTE:
 NO REPRESENTATIVE OF THE COUNTY ENGINEER WILL SURVEY OR LAY OUT ANY PORTION OF THE WORK.
 THE OWNER OR HIS AUTHORIZED REPRESENTATIVE SHALL FURNISH THE COUNTY ENGINEER WITH GRADE SHEETS AND STATIONS OF ALL HOUSE CONNECTIONS AND Y BRANCHES AND SHALL PROVIDE STAKES FOR THEM AT DARK ENDS, LOCKINGS AND WYE STATIONS. PLAINLY MARKED ANY CHANGE OF LOCATION SHALL BE REQUESTED IN WRITING BY THE OWNER OR HIS REPRESENTATIVE.
 NO REVISIONS SHALL BE MADE IN THESE PLANS WITHOUT APPROVAL OF THE COUNTY ENGINEER.

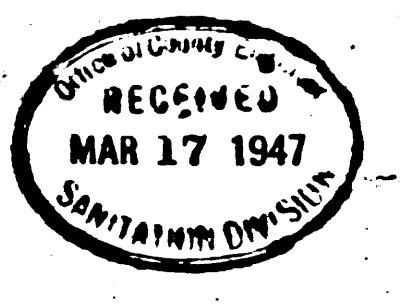
PROFILE ALIGNMENT AND GRADE OF
SANITARY SEWERS
 TO BE CONSTRUCTED IN
CLARK AVE.
 BETWEEN CENTER LINE OF FAYWOOD AVE. AND A
 POINT 300 FEET NORTHERLY AND 300 FEET SOUTHERLY

PRIVATE CONTRACT NO. 503
 W.S. 33
 ONE SHEET
 PREPARED IN THE OFFICE OF
C. E. YOST

BY: *G. E. York*
 REG. C.E. NO. 3267

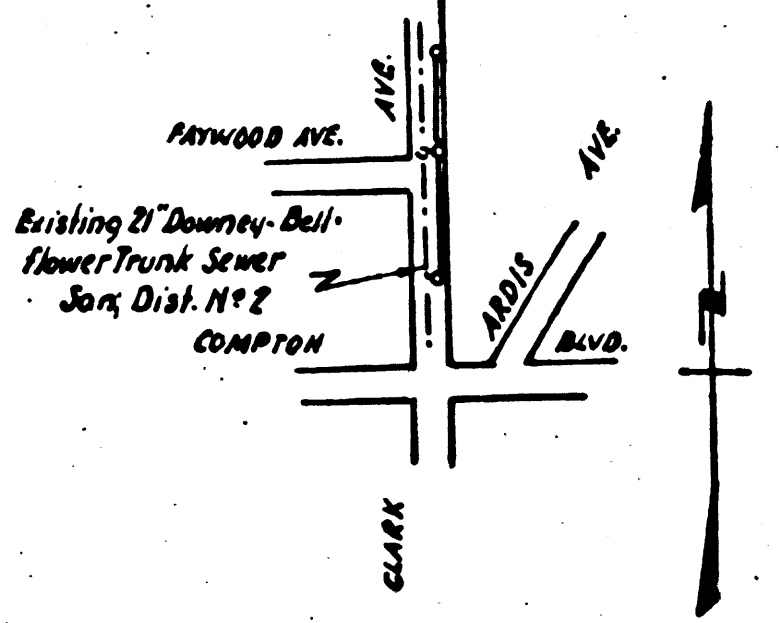
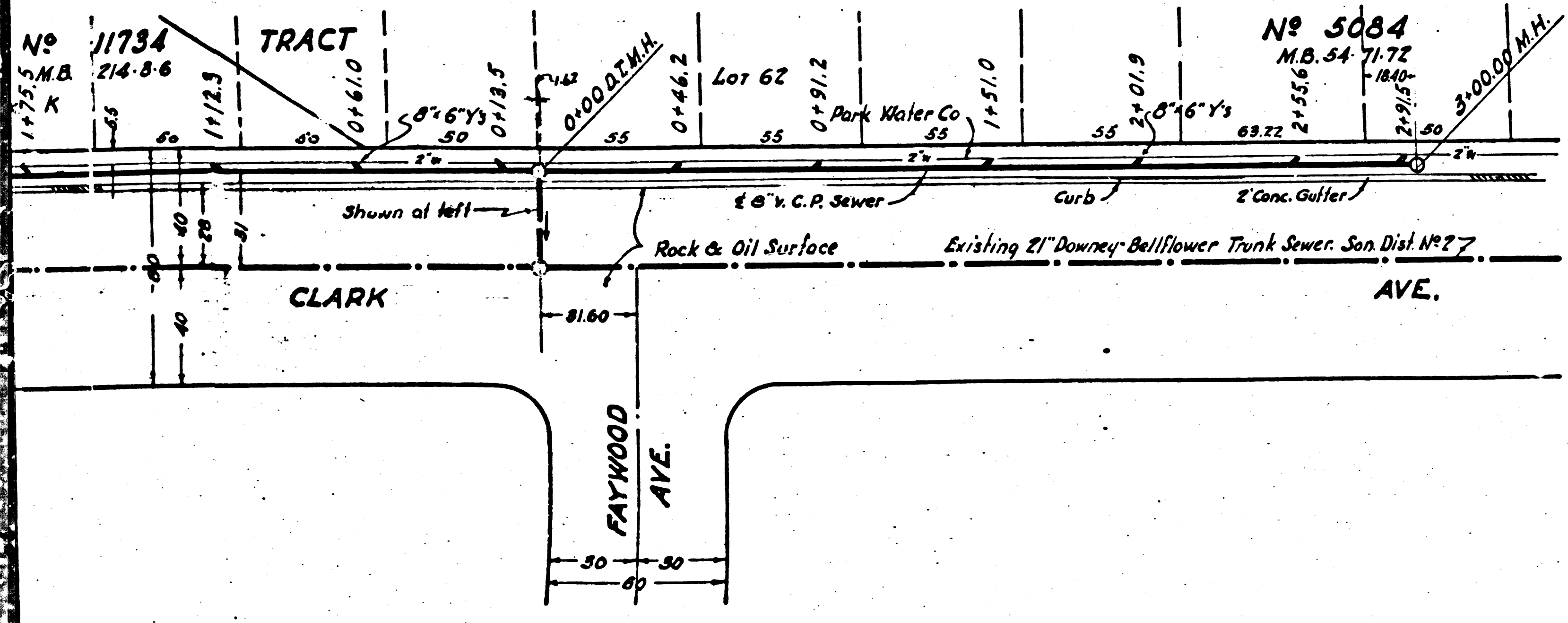
FOR LEGEND
 SEE PLAN NO. S-264

NOTE:
 GRADES TO WHICH THIS IMPROVEMENT IS TO BE CONSTRUCTED ARE SHOWN ON PLAN AND PROFILE.
 GRADE POINTS FOR TOP OF CURB, CENTER LINE OF STREET OR CENTER OF ALLEY ARE SHOWN BY
 CIRCLES ON PROFILES. AT ALL POINTS BETWEEN DESIGNATED POINTS THE GRADE SHALL BE
 ESTABLISHED SO AS TO CONFORM TO A STRAIGHT LINE DRAWN BETWEEN SAID DESIGNATED POINTS.
 ELEVATIONS ARE IN FEET ABOVE U.S.C.S. DATUM OR MEAN SEA LEVEL.
 THIS DRAWING AND THE DATA HEREON ARE HEREBY MADE A PART OF THE SPECIFICATIONS.
 WORK SHALL BE CONSTRUCTED ACCORDING TO SPECIFICATIONS ON FILE IN THE OFFICE OF THE
 COUNTY ENGINEER AND SHALL BE PROSECUTED ONLY IN THE PRESENCE OF THE COUNTY ENGINEER.
 BEFORE WORK CAN BE STARTED THE CONTRACTOR MUST OBTAIN A PERMIT TO EXCAVATE IN
 COUNTY STREETS FROM THE L.A. COUNTY ROAD DEPT., ROOM 100, HALL OF RECORDS AND MAKE A
 DEPOSIT WITH THE COUNTY ENGINEER 700 FASHION LEAGUE BUILDING, SUFFICIENT TO COVER THE
 COST OF CONSTRUCTION INSPECTION AND RECORD PLANS.



COUNTY OF LOS ANGELES, CALIFORNIA
 APPROVED: *[Signature]*
 CHIEF COUNTY ENGINEER
 APPROVED: *C. R. Compton*
 ASST. CHIEF ENGINEER OF COUNTY
 SANITARIUM DISTRICT NO. 2

CHECKED BY: *[Signature]* Feb 25, 1947
 OFFICE OF COUNTY ENGINEER, REG. C.E. NO. 6422



Final C.E.T.I.P. 4/22/47
 Trim Line 7

