

B.M. L & N 4 Sepulveda Blvd.
10' E of W edge of conc. pavement
in Avalon Blvd. Elev. 38.184'

- (1) USE STANDARD MANHOLE FRAME AND COVER S-2-117
- (2) USE STANDARD STRENGTH PIPE
- (3) USE CEMENT MORTAR FOR ALL VITRIFIED CLAY PIPE JOINTS
- (4) RESURFACE ALL TRENCH WITHIN PAVED AREA TO MEET LOS ANGELES COUNTY ROAD DEPT. REQUIREMENTS
- (5) ALL STRUCTURES SHALL BE BRICK SEWER STRUCTURES S-A-104

NOTE: NO REPRESENTATIVE OF THE COUNTY ENGINEER WILL SURVEY OR LAY OUT ANY PORTION OF THE WORK.
NO REVISIONS SHALL BE MADE IN THESE PLANS WITHOUT APPROVAL BY THE COUNTY ENGINEER.

SCALE: VERT. 1" = 4'
HORIZ. 1" = 40'

PROFILE, ALIGNMENT AND GRADE OF
SANITARY SEWER
TO BE CONSTRUCTED IN
236TH STREET
FROM THE FIRST ALLEY EAST OF DOLORES ST.
TO 197TH NORTH EAST

IN TRACT NO. 13843

PRIVATE CONTRACT NO. 505
W. S. 28
SHEET 1 OF 1 SHEET
MARCH 11, 1947

PREPARED IN THE OFFICES OF BUSINESS DEPARTMENT
BOARD OF EDUCATION, L.A. CITY SCHOOL DISTRICT

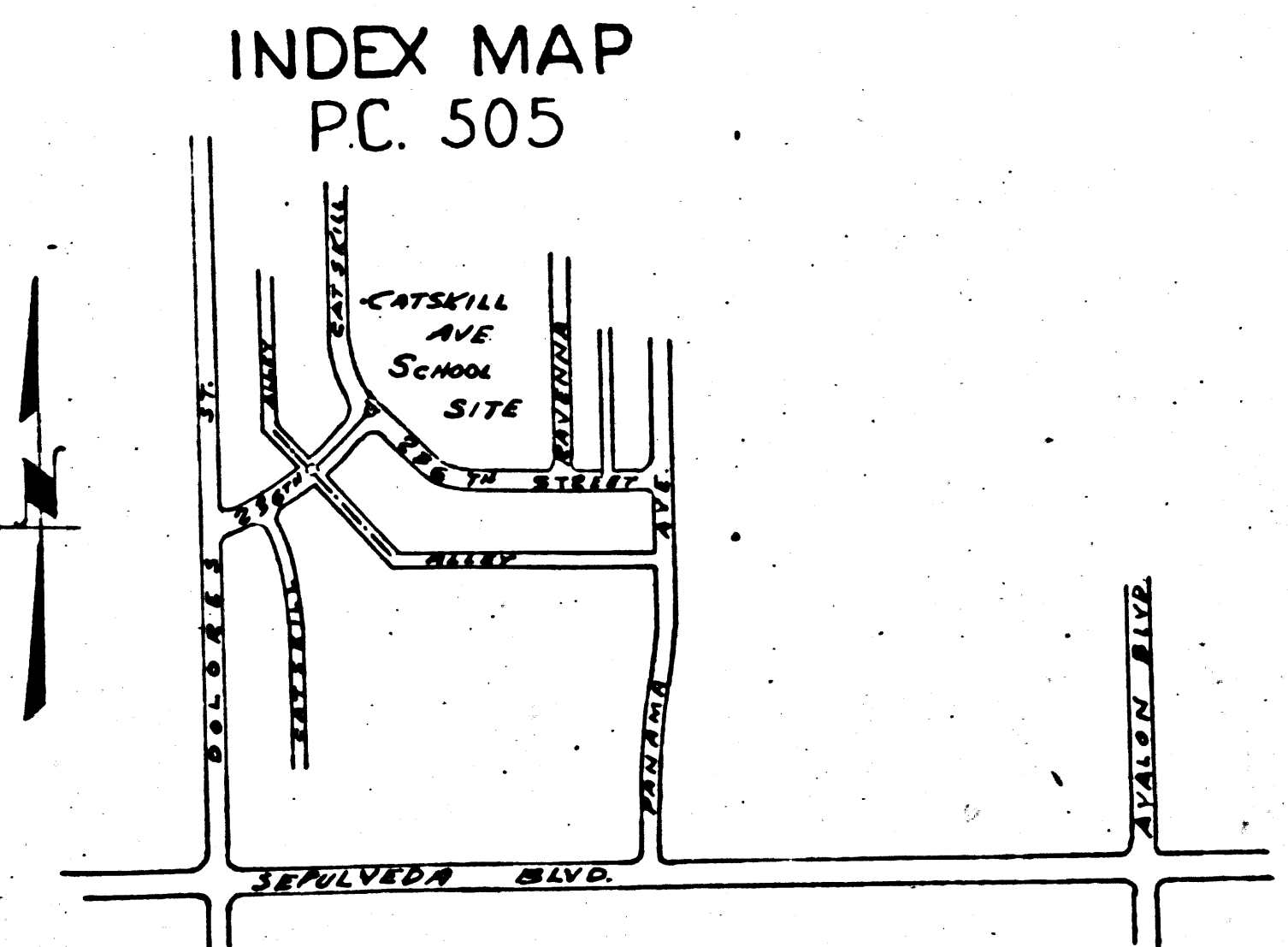
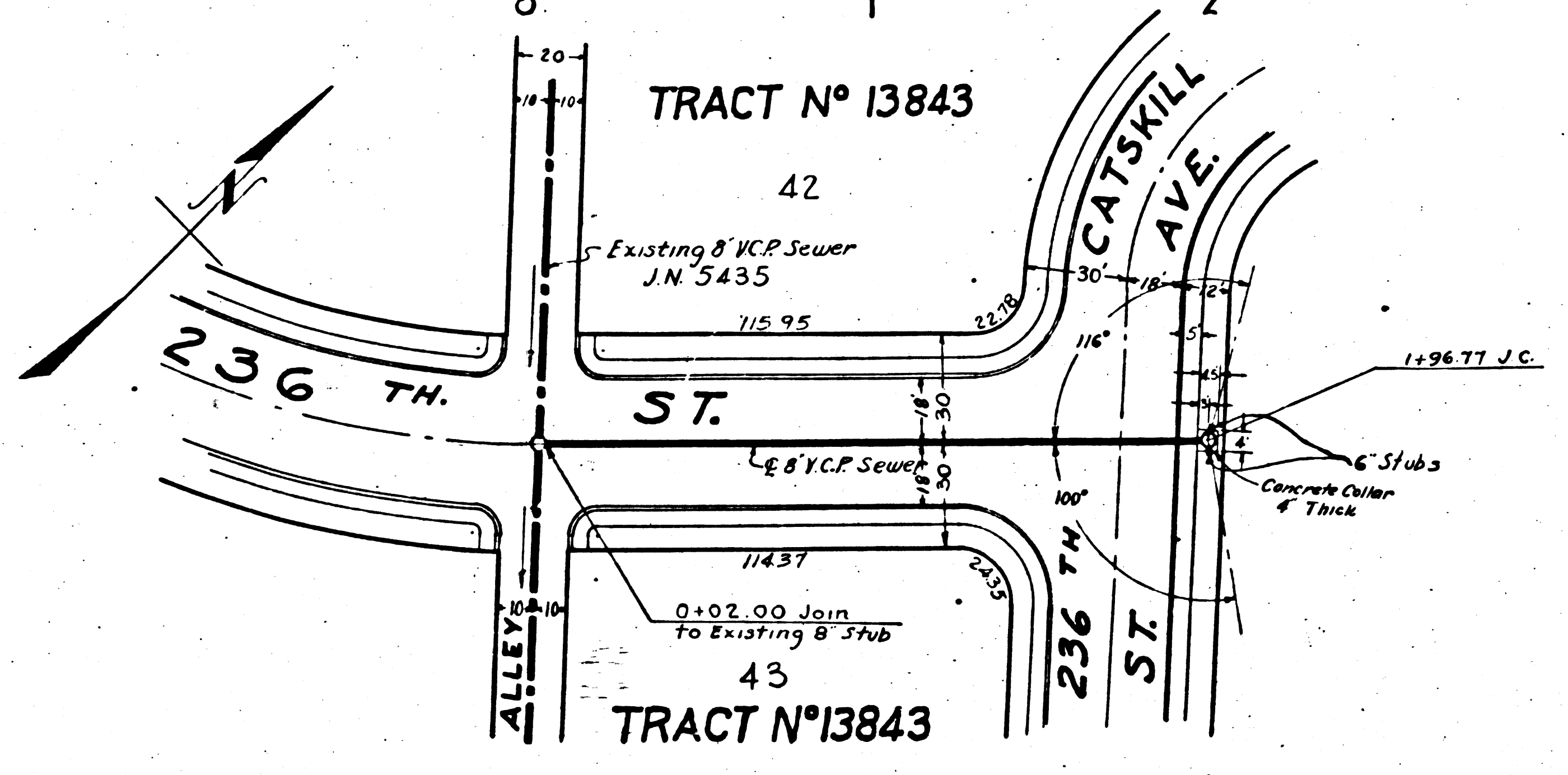
BY: Charles M. Wood
REG. C.E. NO. 5322

NOTE: GRADES TO WHICH THIS IMPROVEMENT IS TO BE CONSTRUCTED ARE SHOWN ON PLANS AND PROFILE. ELEVATIONS ARE IN FEET ABOVE U. S. G. S. DATUM. THIS DRAWING AND THE DATA HEREON ARE HEREBY MADE A PART OF THE SPECIFICATIONS. WORK SHALL BE CONSTRUCTED ACCORDING TO SPECIFICATIONS ON FILE IN THE OFFICE OF THE COUNTY ENGINEER AND SHALL BE PROSECUTED ONLY IN THE PRESENCE OF THE COUNTY ENGINEER. BEFORE WORK CAN BE STARTED, THE CONTRACTOR MUST OBTAIN A PERMIT TO EXCAVATE IN COUNTY STREETS FROM THE L.A. COUNTY ROAD DEPT. HALL OF RECORDS, AND MAKE A DEPOSIT WITH THE COUNTY ENGINEER, 1020 HUBBARD LEAVELL BUILDING, SUFFICIENT TO COVER THE COST OF CONSTRUCTION INSPECTION AND RECORD PLANS.

COUNTY OF LOS ANGELES, CALIFORNIA

APPROVED Alfred Jones
COUNTY ENGINEER
APPROVED Charles M. Wood
CHIEF ENGINEER OF COUNTY
SANITATION DISTRICT NO. 5

CHECKED BY John B. Brown July 23 1947
CLERK OF COUNTY ENGINEER, 512 C.E. BLDG.



Final CK TOP 12/20/47

BO 200

A large grid of graph paper with a vertical margin line on the left side. The grid consists of approximately 18 columns and 15 rows of small squares. The margin line is positioned about one-fifth of the way from the left edge of the grid.

10

MS

MS