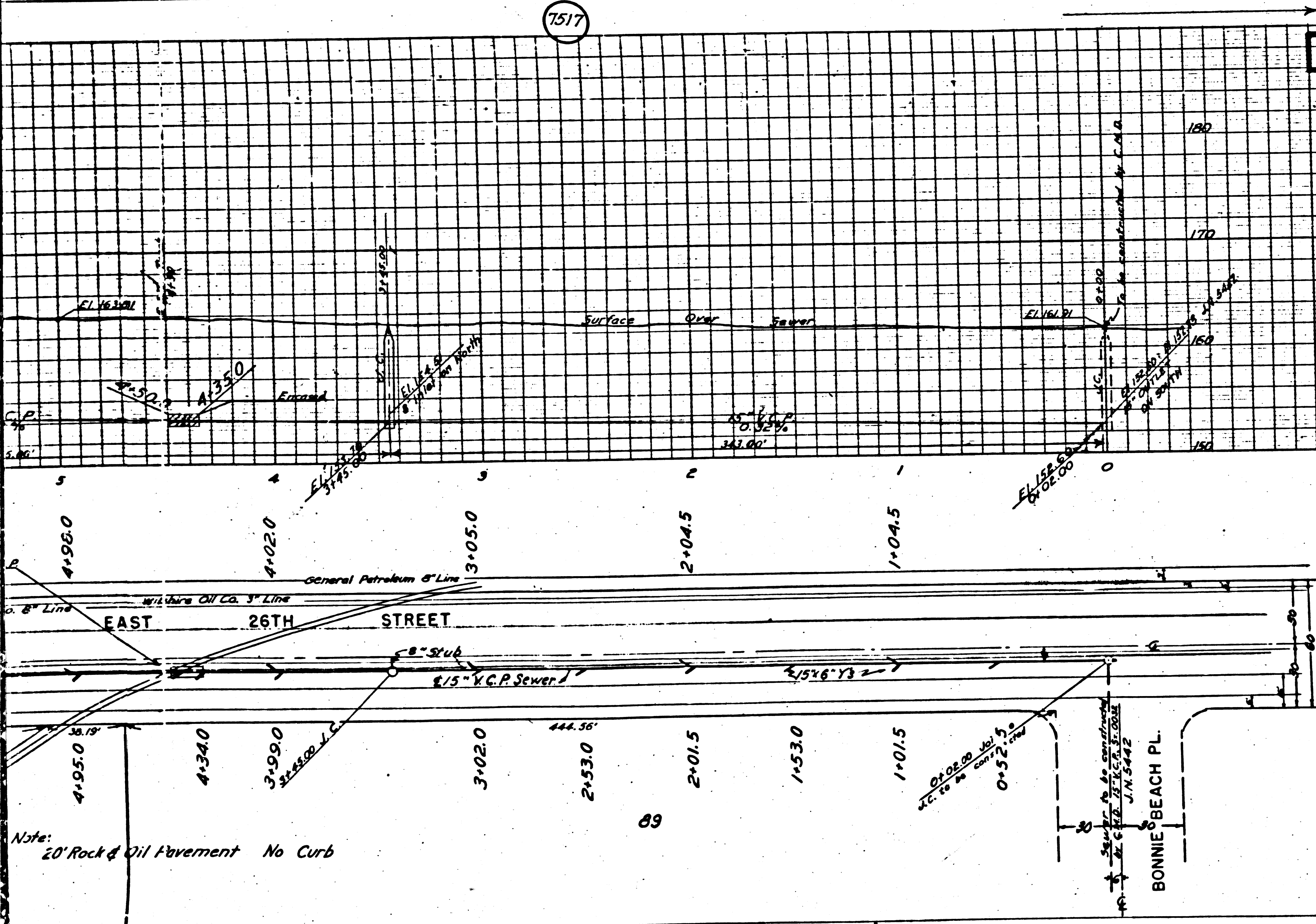


7517

# DOUBLE SCALE

PROFILE, ALIGNMENT AND GRADE OF  
SANITARY SEWERS  
TO BE CONSTRUCTED IN  
EAST 26TH ST  
BETWEEN VERNON CITY BOUNDARY  
AND  
BONNIE BEACH PLACE



- (1) Use Standard Manhole Frame & Cover, 5'-0\"/>
- (2) Use Standard Strength Pipe (Except as Noted)
- (3) Use Cement Mortar for all Vitrified Clay Pipe Joints
- (4) Resurface all Branch within paved area to meet Los Angeles County Road Dept. requirements
- (5) Excavate four feet of cover at points of interference with pipes as per 5-2-5
- (6) All structures shall be Brick Sewer Structures 3'-0\"/>
- (7) Excavation to comply with all applicable Compaction regulations to be made
- (8) Construct these connections on 14 per cent rise to nearest line, unless otherwise noted

NOTE: Grades in which this improvement is to be constructed are shown on plans and profile. Grade points from the centerline of right-of-way are shown by circles on profile. All points between designated points the grade shall be established in conformance to a straight line drawn between said designated points.

Elevations are in feet above U.S.C.S. Datum or mean sea level. This drawing and the data hereon are hereby made a part of the specifications.

Work shall be constructed according to specifications on file in the office of the County Engineer, and shall be prosecuted only in the presence of the County Engineer.

Before work can be started, the contractor must obtain a permit to occupy the County streets from the L.A. County Road Dept., 404 Hall of Records, and make deposit with the County Engineer, 200 Sabine Lane, sufficient to cover the cost of construction inspection and record plans.

No representative of the County Engineer will survey or lay out any portion of the work.

No revisions shall be made in these plans without the approval of the County Engineer.

The contractor is authorized to make such adjustments as may be necessary with grade sheets & stations of all these connections if Y or excess of shall provide stakes for them of their proper location with elevations plainly marked. Any change of location shall be requested in writing by the Owner or his Representative.

REVISIONS CHECKED 5-21-47 *Ed Moore*

REVISOR: DONALD R. WARREN CO. BY *Jim Cox*

PRIVATE CONTRACT NO. 515  
SHEET 1 OF 1 SHEET

PREPARED IN THE OFFICE OF  
DONALD R. WARREN CO.  
ENGINEERS

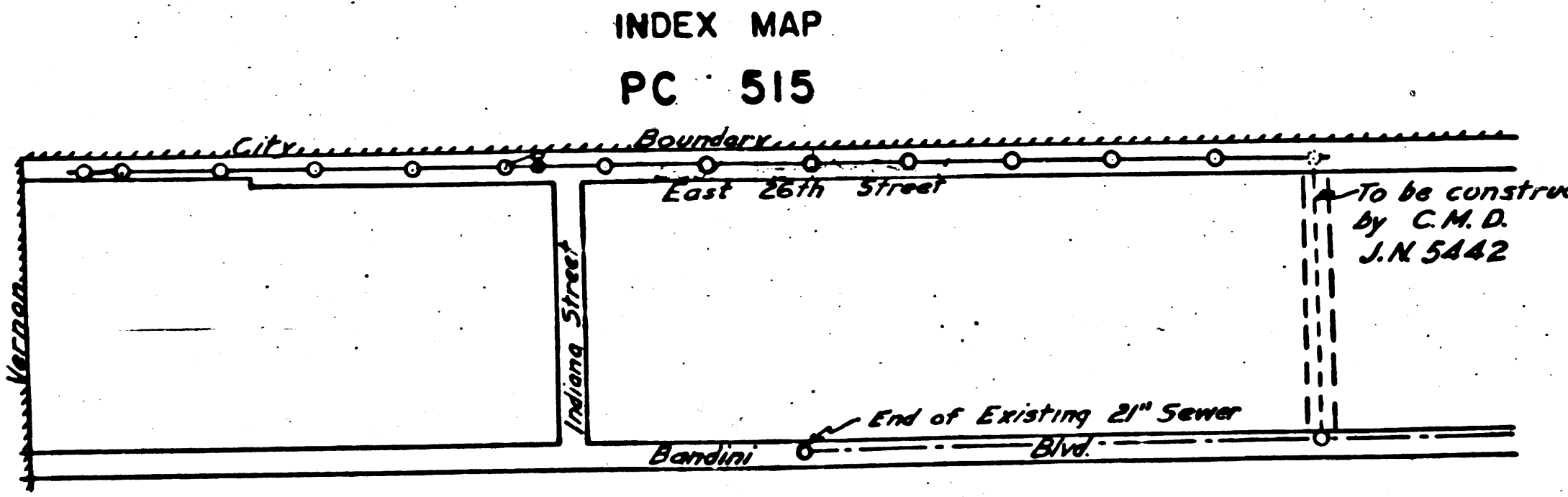
BY *Donald R. Warren* REG. E.E. NO. 1064  
FOR LEGEND  
SEE PLAN NO. 5-0-44

COUNTY OF LOS ANGELES, CALIFORNIA  
APPROVED *Ed Moore* CHIEF DEPUTY COUNTY ENGINEER

APPROVED *Carl Law* CHIEF ENGINEER OF COUNTY SANITATION DISTRICT NO. 2

CHECKED BY *John O. Taylor* 10-19-47  
OFFICE OF COUNTY ENGINEER, REG. C.E. NO. 1047

B.M. - Elev. 169.19. Spike in power pole #191666 E, opposite M.H. at end of 21" Sewer in Bandini Blvd.



REVISOR: DONALD R. WARREN CO. BY *Carl E. Nelson*

REVISIONS CHECKED 10-28-47 *Ed Moore*

APPROVED FOR THE COLLECTION OF LIQUID INDUSTRIAL WASTE CONNECTION PERMITS MUST BE OBTAINED FROM THE COUNTY ENGINEER, ALHAMBRA COUNTY BUSINESS.

BY *Wm. Clark* ASSISTANT COUNTY ENGINEER

REVISOR: DONALD R. WARREN CO. BY *Carl E. Nelson*

REVISIONS CHECKED 11-25-47 *Ed Moore*

REVISIONS CHECKED 11-26-47

Find CL T.P. 1/2/48

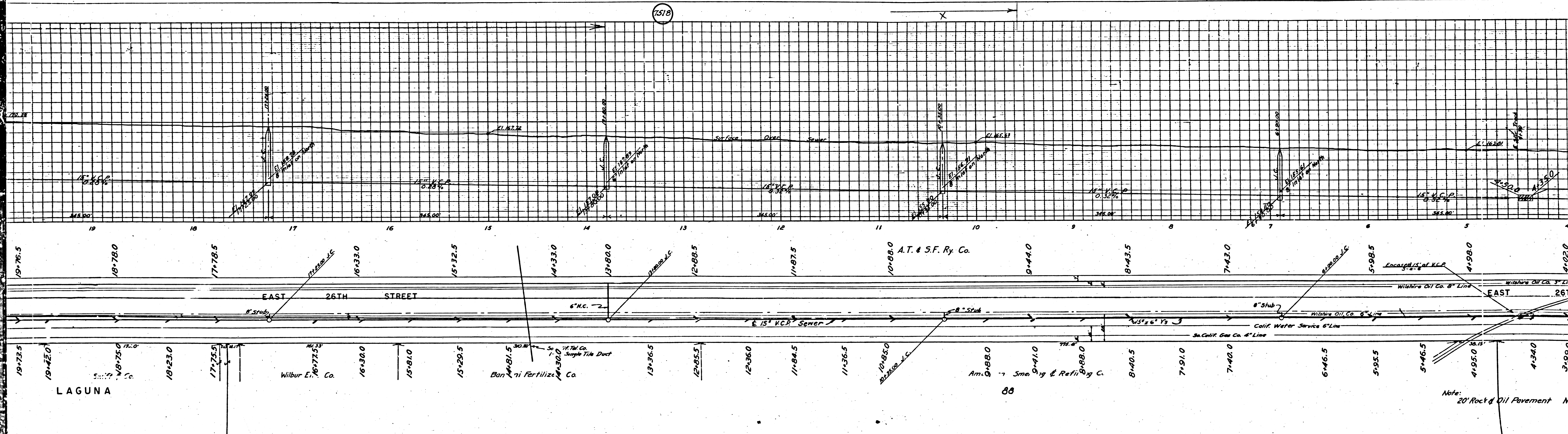
Note: 20' Rock & Oil Pavement No Curb

DRAWN - J.M.F. APR. 47  
CHECKED - J.M.F. APR. 47

LA 47-



7518



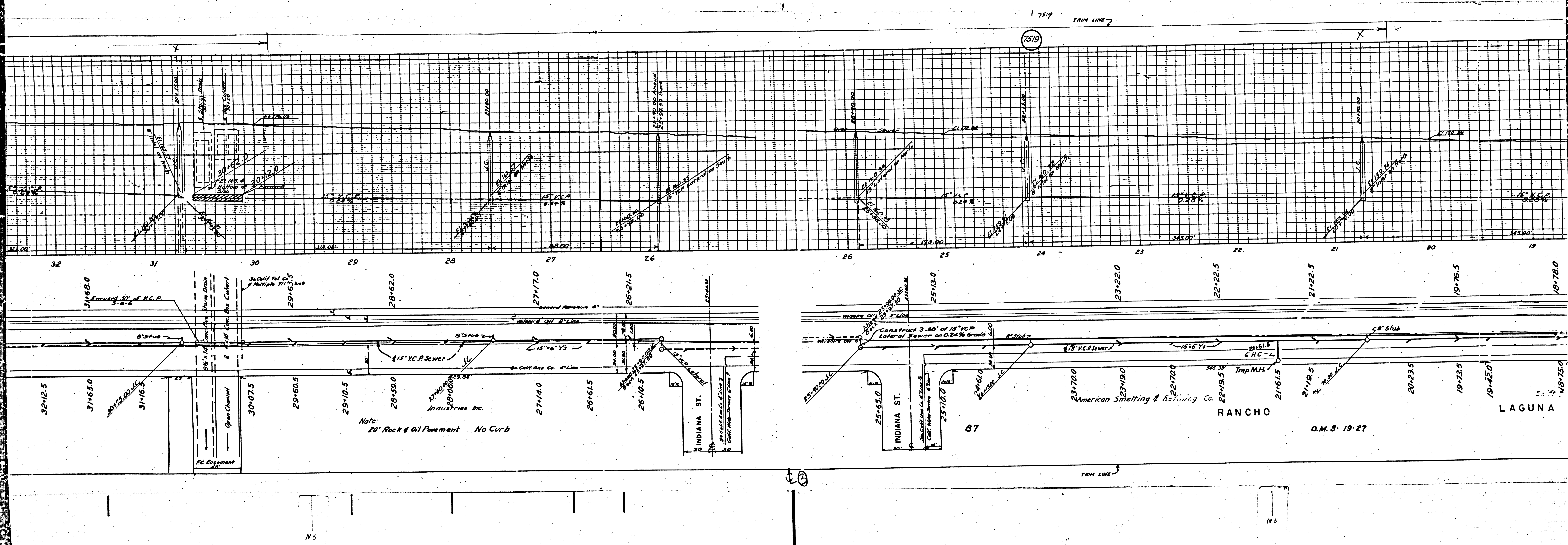
88

Note:  
20' Rock & Oil Pavement

MH

M6





7519 TRIM LINE

7519

O.M. 3-19-27

Note:  
20' Rock & Oil Pavement No Curb

Industries Inc.

RANCHO

LAGUNA

87

TRIM LINE

M3

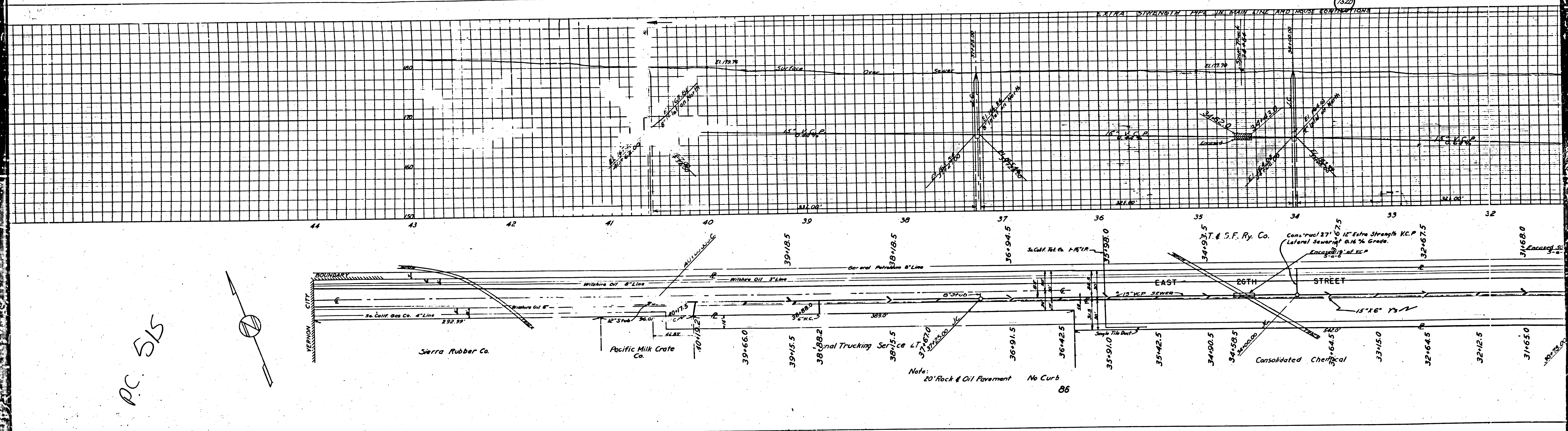
M5



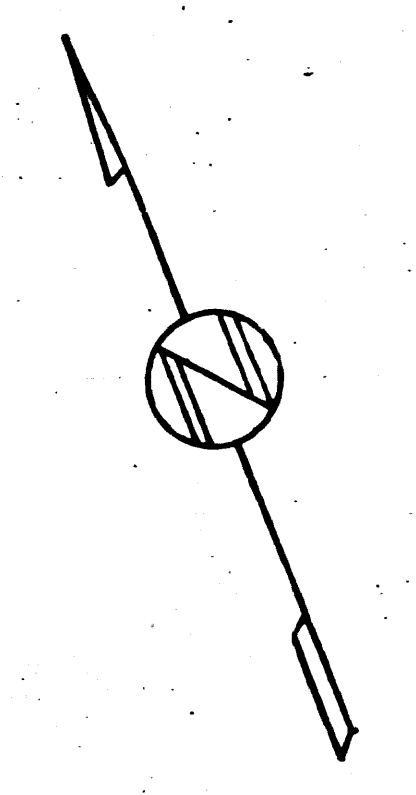
1720

TRIM LINE

7520



PC 515



Note:  
20' Rock & Oil Pavement No Curb  
86

TRIM LINE

Ⓟ

M6